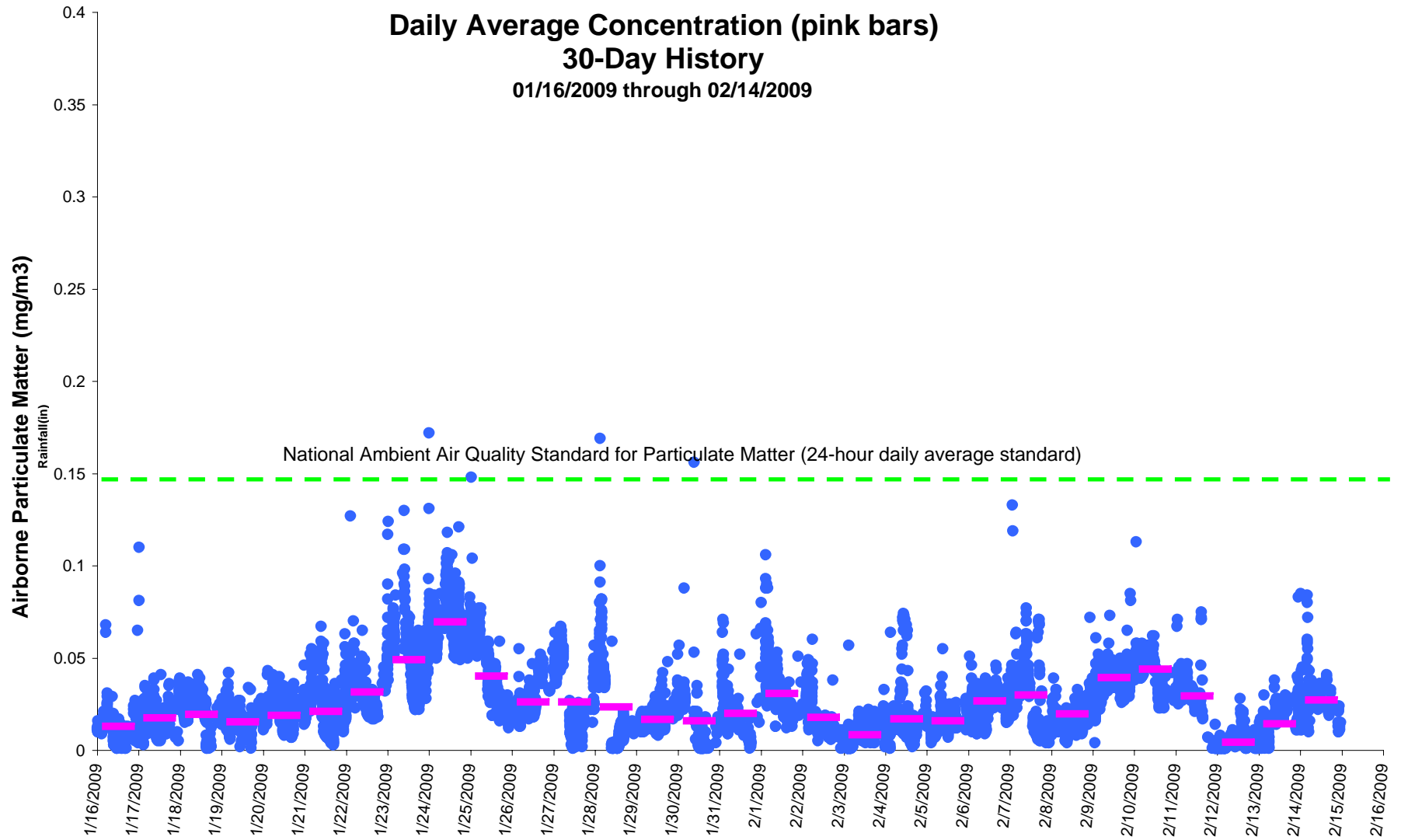


Air Sampling Results (blue dots)

Daily Average Concentration (pink bars)

30-Day History

01/16/2009 through 02/14/2009



* The particulate monitor is affected by humidity. High relative humidity causes the instrument to read higher than the true particulate level in air.

* Elevated readings on 1/23/2009 and 1/28/2009 are due to active nearby fireplace with strong wood burning odor.

* Elevated reading on 1/30/2009 at 9:19 AM is due to a nearby brush fire.

* Elevated reading on 2/9/2009 at 9:31 PM is due to a nearby large brush fire (0.674 mg/m3, not pictured).