

108th Congress of the United States

Missouri - Congressional District 7

Representative Roy Blunt

Legend

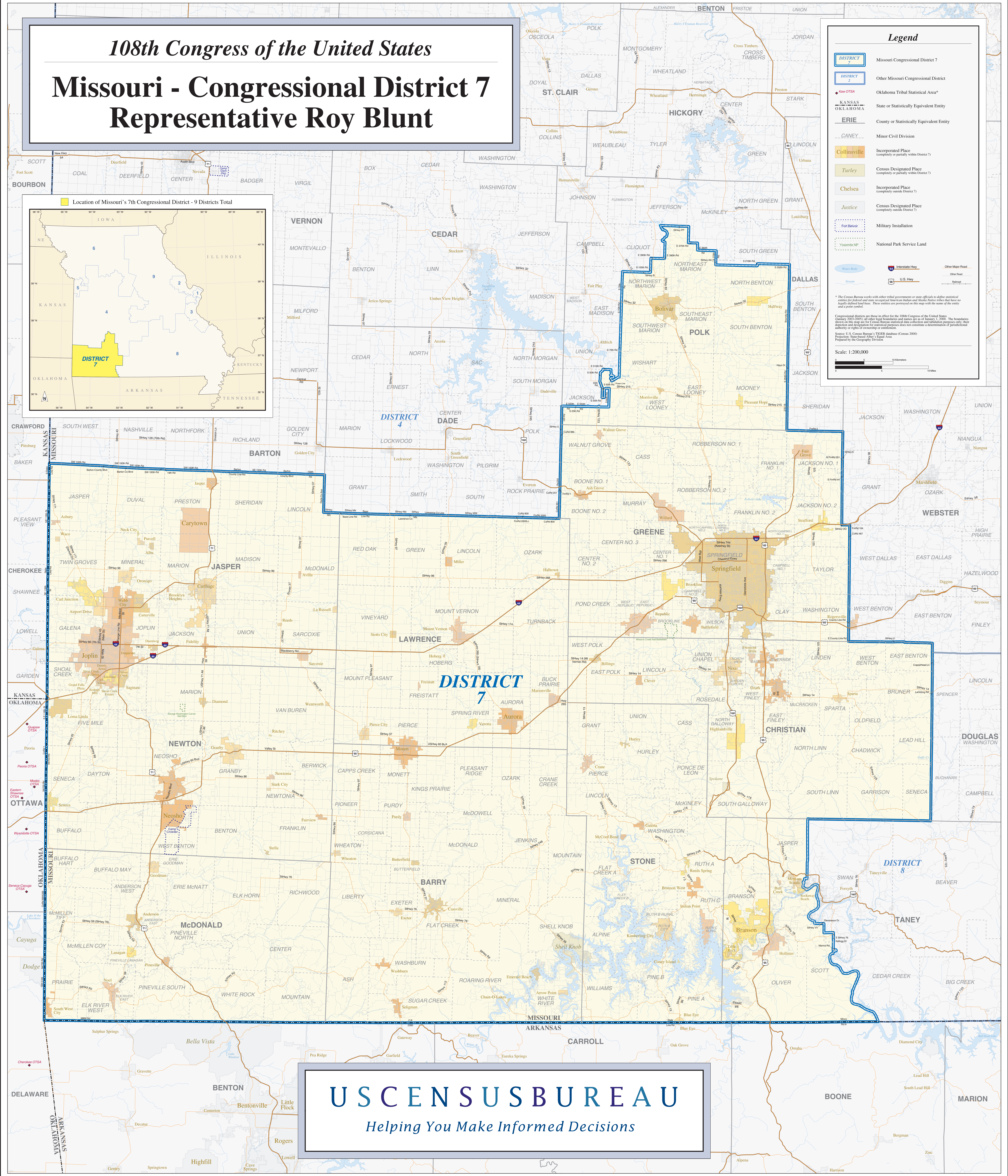
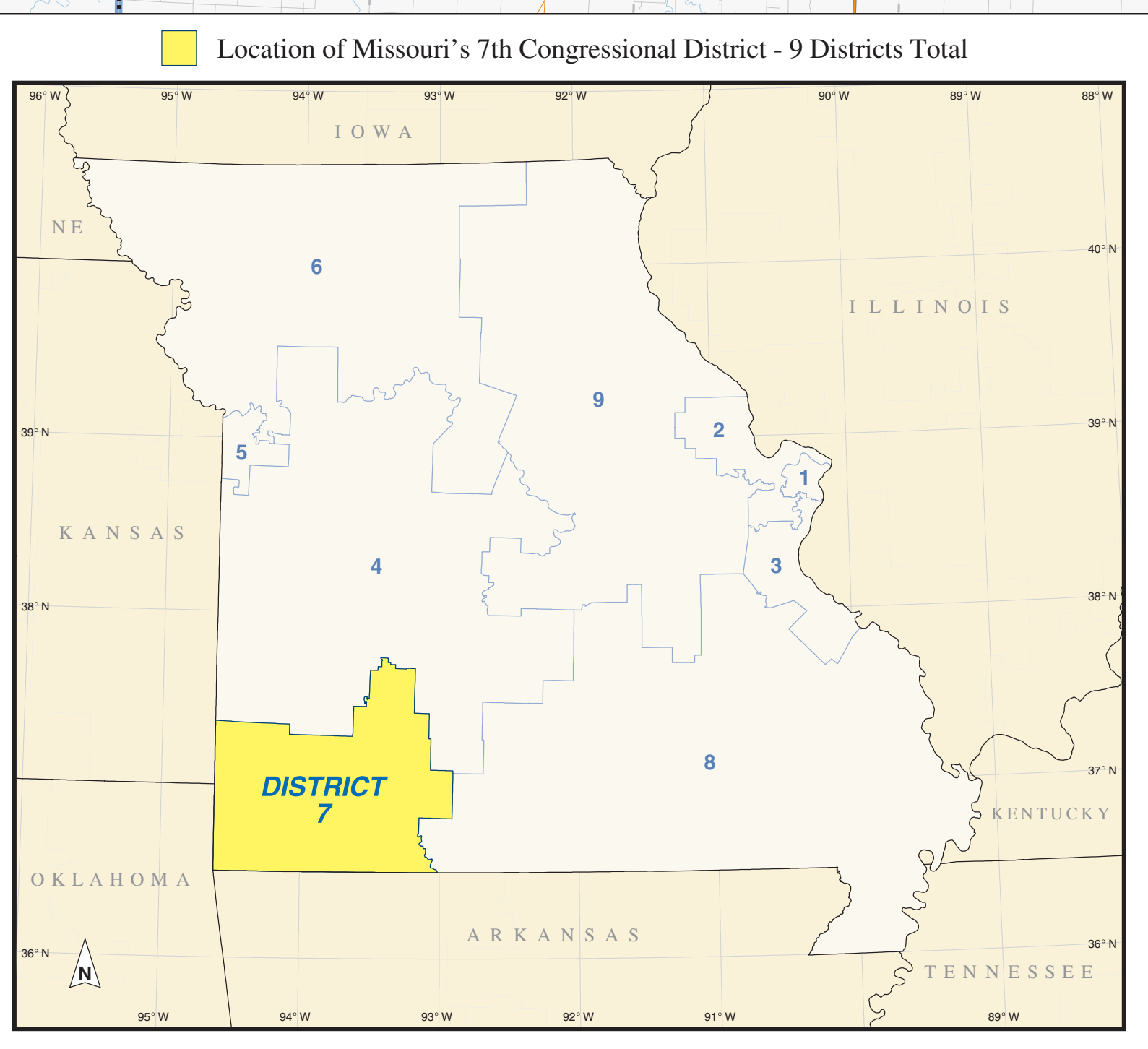
- DISTRICT Missouri Congressional District 7
- DISTRICT 2 Other Missouri Congressional District
- KANSAS Oklahoma Tribal Statistical Area*
- KANSAS State or Statistically Equivalent Entity
- ERIE County or Statistically Equivalent Entity
- CANEY Minor Civil Division
- Collinsville Incorporated Place (completely or partially within District 7)
- Turley Census Designated Place (completely or partially within District 7)
- Chelsea Incorporated Place (completely outside District 7)
- Justice Census Designated Place (completely outside District 7)
- Fort Belvoir Military Installation
- Vissamite NP National Park Service Land

* The Census Bureau works with other tribal governments or state officials to define statistical entities for federal and state recreational American Indian and Alaska Native entities that have no legally defined land base. These entities are portrayed on this map with the name of the entity and a dotted outline.

Congressional districts are shown in effect for the 108th Congress of the United States (January 2003-2005); all other legal boundaries and names are as of January 1, 2000. The boundaries shown on this map are for Census Bureau statistical data collection and tabulation purposes only; their depiction and designation for statistical purposes does not constitute a determination of jurisdictional authority or rights or ownership or entitlement.

Source: U.S. Census Bureau's TIGER database (Census 2000) Projection: StatePlane North Central Equal Area Prepared by the Geography Division

Scale: 1:200,000



US CENSUS BUREAU
Helping You Make Informed Decisions