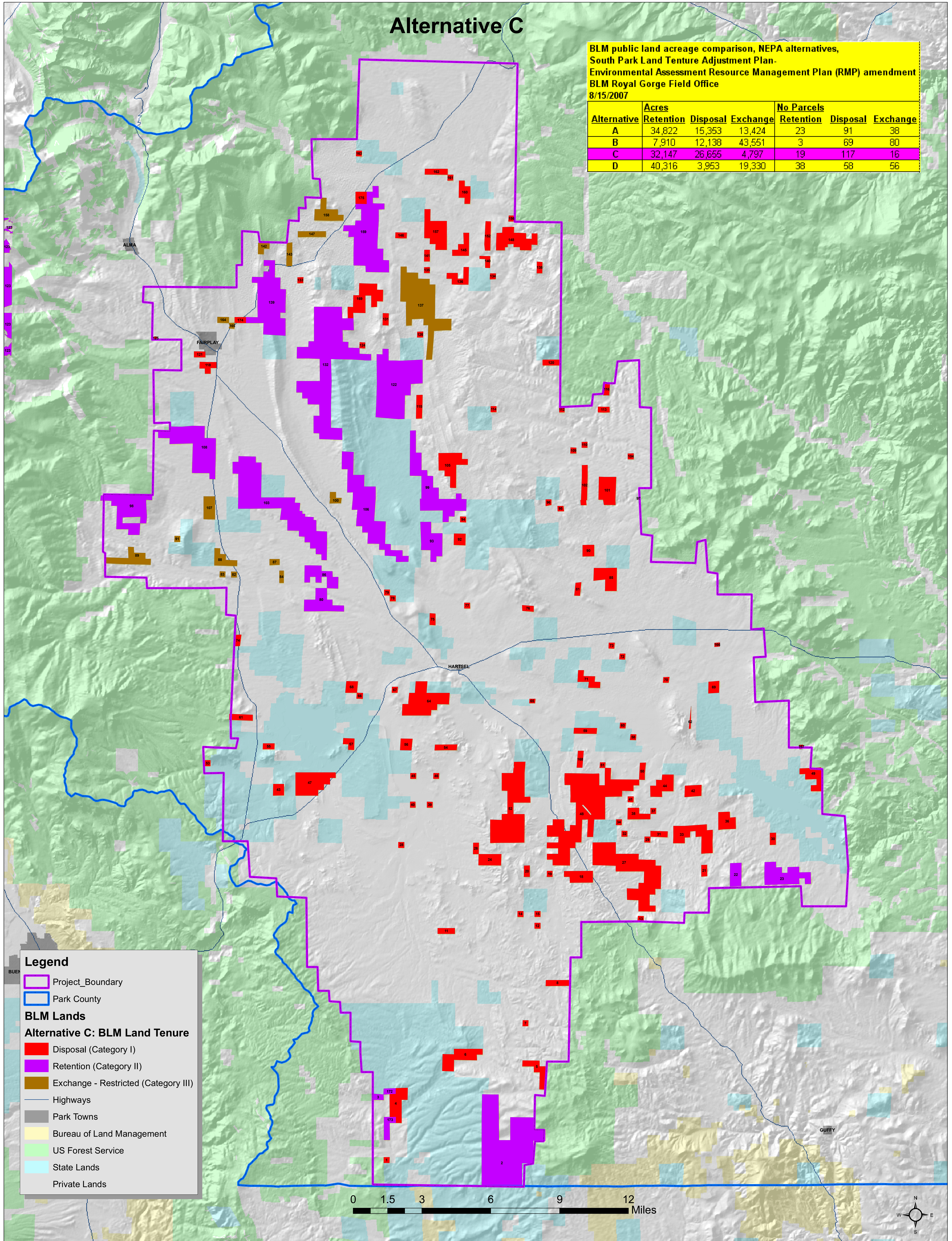
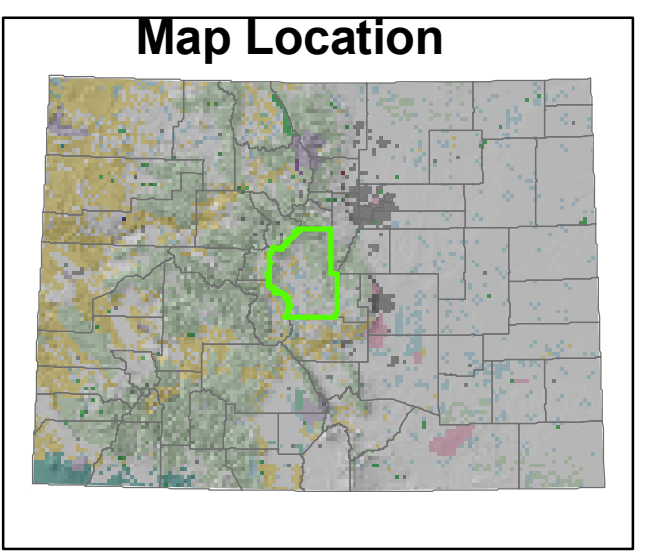




South Park Land Tenure Adjustment - Park County, Colorado Environmental Assessment Resource Management Plan Amendment; Alternative C (8/15/2007) Bureau of Land Management - Royal Gorge Field Office



This project is funded through a combination of federal, state, and local funds. The project is subject to the National Environmental Policy Act (NEPA) and the National Historic Preservation Act (NHPA). The project is also subject to the Colorado Antiquities Act and the Colorado State Antiquities Act. The project is also subject to the Colorado State Antiquities Act and the Colorado State Antiquities Act. The project is also subject to the Colorado State Antiquities Act and the Colorado State Antiquities Act.