

NASA/CR—2003–212263



# **Error Generation in CATS-Based Agents**

*Todd J. Callantine*

*San Jose State University, San Jose, California*

---

May 2003

## The NASA STI Program Office ... in Profile

Since its founding, NASA has been dedicated to the advancement of aeronautics and space science. The NASA Scientific and Technical Information (STI) Program Office plays a key part in helping NASA maintain this important role.

The NASA STI Program Office is operated by Langley Research Center, the lead center for NASA's scientific and technical information. The NASA STI Program Office provides access to the NASA STI Database, the largest collection of aeronautical and space science STI in the world. The Program Office is also NASA's institutional mechanism for disseminating the results of its research and development activities. These results are published by NASA in the NASA STI Report Series, which includes the following report types:

- **TECHNICAL PUBLICATION.** Reports of completed research or a major significant phase of research that present the results of NASA programs and include extensive data or theoretical analysis. Includes compilations of significant scientific and technical data and information deemed to be of continuing reference value. NASA counterpart of peer-reviewed formal professional papers, but having less stringent limitations on manuscript length and extent of graphic presentations.
- **TECHNICAL MEMORANDUM.** Scientific and technical findings that are preliminary or of specialized interest, e.g., quick release reports, working papers, and bibliographies that contain minimal annotation. Does not contain extensive analysis.
- **CONTRACTOR REPORT.** Scientific and technical findings by NASA-sponsored contractors and grantees.

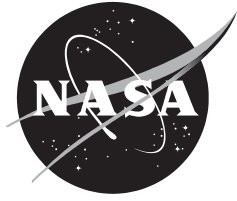
- **CONFERENCE PUBLICATION.** Collected papers from scientific and technical conferences, symposia, seminars, or other meetings sponsored or co-sponsored by NASA.
- **SPECIAL PUBLICATION.** Scientific, technical, or historical information from NASA programs, projects, and missions, often concerned with subjects having substantial public interest.
- **TECHNICAL TRANSLATION.** English-language translations of foreign scientific and technical material pertinent to NASA's mission.

Specialized services that complement the STI Program Office's diverse offerings include creating custom thesauri, building customized databases, organizing and publishing research results ... even providing videos.

For more information about the NASA STI Program Office, see the following:

- Access the NASA STI Program Home Page at <http://www.sti.nasa.gov>
- E-mail your question via the Internet to [help@sti.nasa.gov](mailto:help@sti.nasa.gov)
- Fax your question to the NASA STI Help Desk at (301) 621-0134
- Telephone the NASA STI Help Desk at (301) 621-0390
- Write to:  
NASA STI Help Desk  
NASA Center for Aerospace  
Information  
7121 Standard Drive  
Hanover, MD 21076-1320

NASA/CR—2003–212263



# **Error Generation in CATS-Based Agents**

*Todd J. Callantine*

*San Jose State University, San Jose, California*

National Aeronautics and  
Space Administration

Ames Research Center  
Moffett Field, California 94035

---

May 2003

Available from:

NASA Center for AeroSpace Information  
7121 Standard Drive  
Hanover, MD 21076-1320  
301-621-0390

National Technical Information Service  
5285 Port Royal Road  
Springfield, VA 22161  
703-605-6000

## Summary

This research presents a methodology for generating errors from a model of nominally preferred correct operator activities, given a particular operational context, and maintaining an explicit link to the erroneous contextual information to support analyses. It uses the Crew Activity Tracking System (CATS) model as the basis for error generation. This report describes how the process works, and how it may be useful for supporting agent-based system safety analyses. The report presents results obtained by applying the error-generation process and discusses implementation issues. The research is supported by the System-Wide Accident Prevention Element of the NASA Aviation Safety Program.

## Introduction

Computer-based agents that err in realistic ways are an attractive enabling technology for system safety analyses. Simulations in which agents probabilistically err, in ways that a human operator might, may help researchers assess the robustness of human-machine systems. Design efforts may then focus on preventing and recovering from errors that, when simulated in the overall system environment, lead to poorly understood or dangerous situations. Such an approach may reduce the time spent designing for relatively benign human error-related problems to the exclusion of unforeseen problems that deserve close attention. This report describes how agents based on the Crew Activity Tracking System (CATS) can make errors in support of such an approach. In order to focus the research, and connect it to related error-detection research, this research seeks to demonstrate how agents based on CATS can make errors that CATS itself can detect.

CATS is a methodology for 'activity tracking' implemented in a computer-based system (Callantine, Mitchell, and Palmer, 1999). The CATS activity tracking methodology entails predicting the set of expected nominal operator activities for the current operational context, then comparing actual operator actions to these expectations to ensure operators performed correct activities. In some situations, various methods or techniques for controlling some aspect of a system may be acceptable. Therefore the methodology also includes a mechanism for determining that, although operator actions do not match expectations exactly, the actions are nonetheless correct. In this sense, CATS is designed to 'track' flight crew activities in real time and determine that they are error-free.

CATS identifies two types of errors, should they occur: errors of omission, and errors of commission. It further identifies errors of commission that result when the 'right action' is performed with the 'wrong value' (e.g., setting the correct automation target, but setting it to an incorrect value). CATS does not base these determinations on a 'formulaic' representation of how such errors would appear in a trace of operator activities, nor attempt to further classify errors (e.g., 'reversals'). Instead, CATS simply determines whether actions operators perform (or do not perform) are contained in the set of actions that need to be performed, given the current operational context.

While the literature contains assertions about the necessity of examining detailed error 'phenotypes' (e.g., Hollnagel, 1991, 1993), the CATS error-detection scheme works given only a context, and an operator action (or inaction). The CATS representation of context includes only relevant system states and constraints, and

salient relationships between them. State and constraint information is represented at multiple levels of abstraction, and does include historic and predicted information as necessary to establish the current context. Given that the system is functioning correctly, so that the effects of past operator actions are reflected in the system state, past operator actions are irrelevant. If desired, error phenotypes may be assessed via post hoc analysis of the actual observed sequence of operator actions.

### CATS Architecture and Processing

Figure 1 generically depicts information flow in CATS, between a controlled system and CATS, and between CATS and applications based on it. CATS uses representations of the current state of the controlled system and constraints imposed by the environment (including performance limits on the controlled system) to derive the current operational context. CATS then uses this representation to generate predictions from its model of operator activities.

As CATS detects operator actions during runtime, it compares them to predicted activities. Actions that match predictions are correct in the current context. CATS assesses actions that it cannot immediately interpret as matching a prediction by periodically referencing the activity model until it receives enough new contextual information to disambiguate possible interpretations. If after a specified period of time CATS fails to detect an action that matches a predicted activity, or at least an action that supports an alternative valid method of addressing the required function, CATS ‘flags’ a potential error of omission.

Two processing threads are at work in CATS: a ‘prediction thread’ responsible for generating the context information necessary to predict nominal activities, and an ‘interpretation thread’ that interprets operator actions. The result of the activity tracking process supplies the knowledge required for several useful applications. Displays of the resulting interpretations—together with displays for visualizing the input data, current

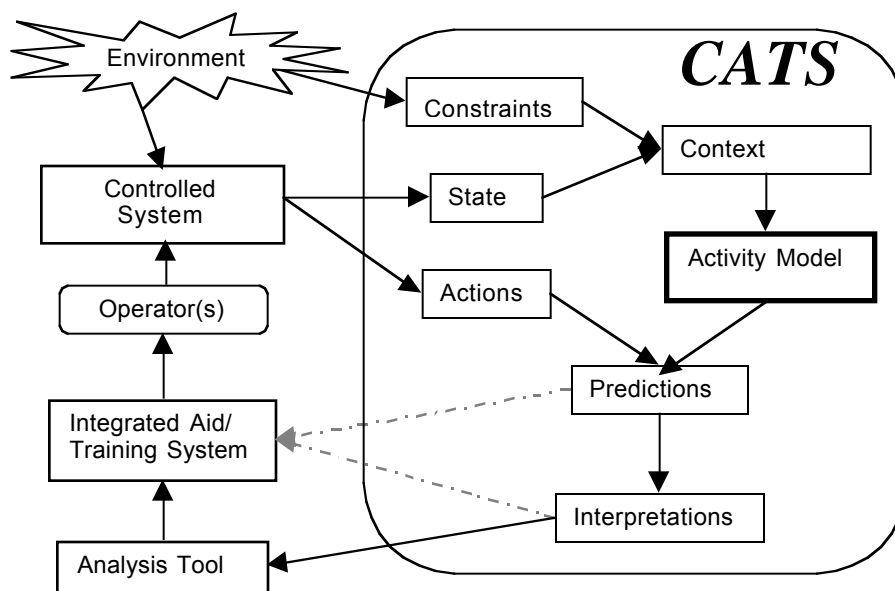


Figure 1. Information flow within and between CATS and a generic human-machine system, and applications to error analysis, aiding, and training.

operational context, and activity model—comprise a CATS-based analysis tool (Callantine and Crane, 2000; Callantine, 2000a, 2001b). Predictions and interpretations supply the information necessary for an operator aiding system that is integrated into the interface of the controlled system or, in the case of a tutoring system, a high-fidelity simulation of the controlled system. The CATS predictions may also be executed directly on the simulated controlled system, effectively creating an intelligent agent useful for analyses of system operation.

### **Error Simulation in CATS-based Agents**

Previous research has investigated various ways of implementing CATS-based agents (Callantine, 2001a, 2002c), as well as ways to simulate operator errors (Callantine, 2002b). For example, CATS-based air traffic controller agents maintain a representation of aircraft flow-spacing and separation problems. Manipulating the context representation in these agents through a mechanism that probabilistically ‘forgets’ various information, or ‘confuses’ aircraft, causes errors of varying severity (Callantine, 2002b). However, for the air traffic controller agents, the CATS model served only to structure the ‘flow’ of high-level air traffic control activities. Much of the air traffic controller agent knowledge was represented outside the CATS model in a ‘skill library’ and strategy-selection ‘control rules.’ Because of this ‘external’ knowledge, the correspondence of the errors generated to those detectable by an activity tracking version of CATS was not clear.

The present research takes as its starting point a CATS activity tracking implementation for the aircraft flight deck, in which the procedural knowledge required for the piloting task is fully represented in the CATS model. The

specific version of CATS was used to detect pilot errors from NASA Langley Boeing 757 ARIES aircraft flight data (Callantine, 2002a). This research uses the same version of CATS to ensure that the errors that are generated map clearly to those it is designed to detect.

## **CATS Error Generation Mechanism and Validation Methodology**

To generate errors as it might when used as the basis as an intelligent pilot agent, CATS was first modified to identify those points when its predictions change as a result of a salient change in the operational context. Additional Java™ code was then added to manipulate the resultant context representation to create a representation that was incorrect. Given the incorrect context, CATS generates predictions that are in error. Unlike the error mechanisms developed in Callantine (2002b), this procedure produces errors that are guaranteed by the structure of the CATS model to be relevant in the current operational context, and that are detectable by a CATS activity tracking implementation with the same model. This section of the report details this process together with the CATS knowledge representations that support it.

### **CATS Model and Context Representation**

Figure 2 depicts a fragment of the CATS model developed for the Boeing 757 piloting task, as reported in Callantine (2002b). The model decomposes the highest level activity, ‘fly glass cockpit aircraft,’ into sub-activities as necessary down to the level of pilot actions. Figure 2 illustrates eight leaf nodes that represent detectable pilot actions. The complete model includes all actions derivable from the available flight data.

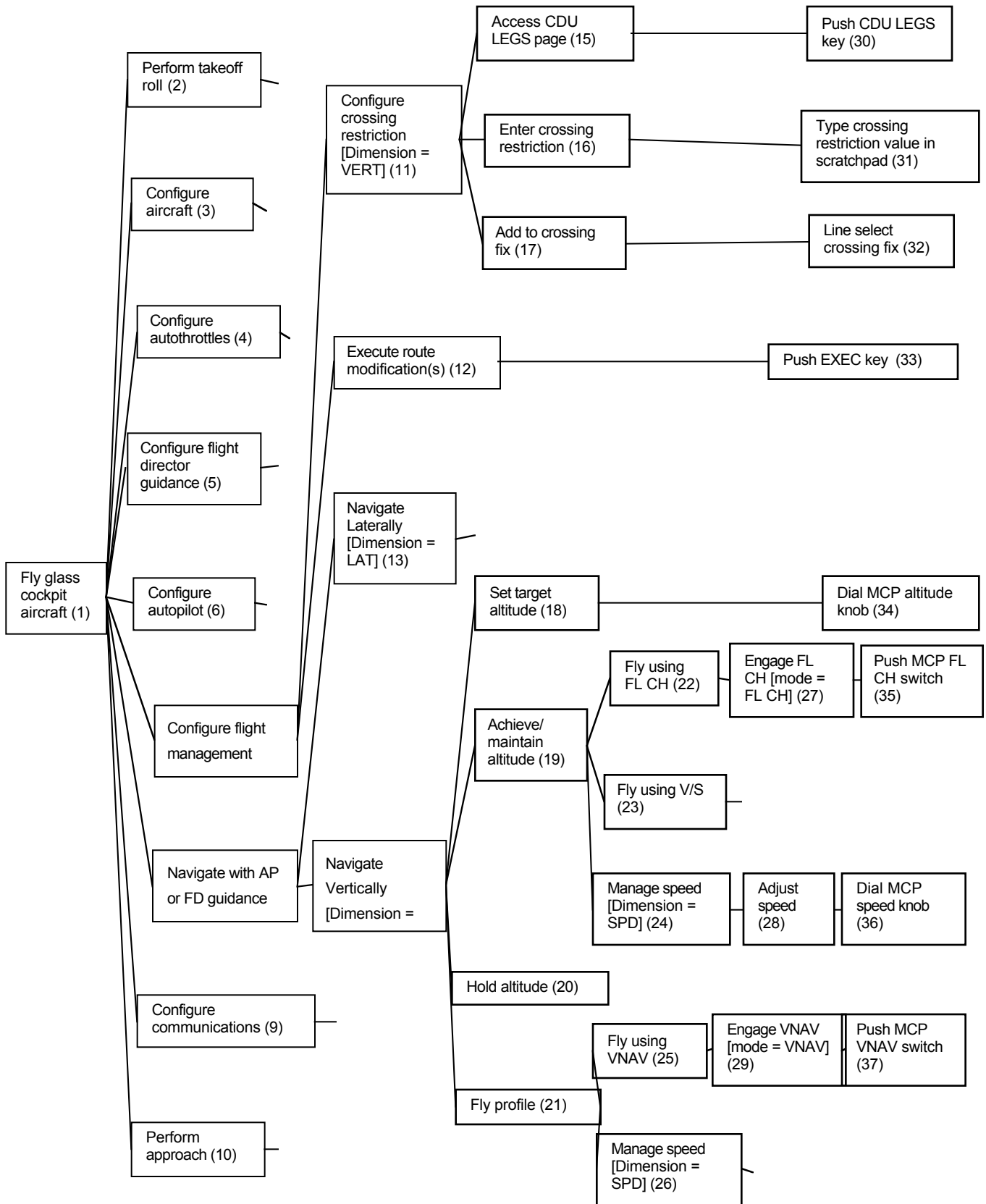


Figure 2. Fragment of CATS model for B757 operations highlighting low-level subtasks and actions.



Every activity in the model is represented with conditions that express the context in which the activity is nominally preferred, given policies and procedures governing flight operations. The parenthesized numbers in Figure 2 refer to Table 1, which lists the ‘and-or trees’ that comprise these rules. The rules incorporate so-called ‘context specifiers’ that summarize key contextual information. Each context specifier denotes that some salient contextual description holds at the current time. The presence or absence of a particular context specifier in the current set determines whether the condition for predicting a particular activity evaluates true or false.

The structure of the CATS model enables identification of valid alternative methods for performing required functions, because all activities that an operator may correctly perform in support of a given function appear below that function in the CATS model. For a given operational context, only one alternative method is designated as preferred. Put another way, every activity in a CATS model is, in some context, part of a preferred way to accomplish a required function, and there are no contexts in which the preferred method is ambiguous.

### **CATS Prediction Process**

To predict the currently preferred set of activities, CATS searches its model top-down, so that higher level activities ‘subsume’ their children (i.e., the conditions on an activity must be met before CATS can predict any of its children). CATS makes predictions and interpretations at every level of abstraction represented in the model.

Procedural steps are represented in the model using conditions that reflect contextual changes, not by rules conditioned by events, or even actions

themselves, such as “do action *B* when action *A* has been done.” Instead, conditions for performing *B* are those reflected in the system state when *A* has been properly performed. A consequence of supplying conditions for when the operator should perform any given activity is that CATS predicts activities independently. If two procedures are in progress, CATS predicts the steps in each that the operator should perform next as an *unordered* set containing the two actions (along with the higher-level activities each action supports).

CATS-based agents observe a convention that ensures direct correspondence between agent behavior and CATS error-detection capabilities and also provides a basis for validating the error-generation process: the agent must explicitly predict an action through the CATS prediction process in order to ‘officially execute’ the action.

### **Error Generation**

This research seeks an error-generation process that utilizes a principled approach in generating errors, so that the errors produced are both plausible and truly errors, as opposed to random actions or actions that may be actually correct, if not preferred. The process also seeks to maintain a link between the errors that are generated, and the erroneous context representation that produces them.

A ‘probabilistic approach’ of randomly altering some context specifier or set of context specifiers (or simply selecting actions at random) unfortunately may produce actions whose relationship to the correct response is tenuous. For example, in a situation that calls *only* for an autopilot mode selection, randomly including a ‘comm-freq-outside-limits’

Table 1. ‘And-or’ trees of conditions under which the CATS model in Figure 2 represents activities as ‘nominally preferred.’

- (1) start-of-run
- (2) (not above-runway-elevation)
- (3) (and (not above-clean-speed) (not flight-surfaces-within-limits) (not gear-within-limits) )
- (4) (not autothrottle-armed)
- (5) (not flight-director-on)
- (6) [ (and (not autopilot-cmd-mode-engaged) above-1000-feet-AGL ) ]
- (7) (or (not programmed-route-within-limits) route-uplink-received )
- (8) (and above-1000-feet-AGL (or autopilot-cmd-mode-engaged flight-director-on) )
- (9) (not comm-frequency-within-limits)
- (10) (or approaching-gldeslope-intercept-point approach-localizer-intercept-point)
- (11) (not crossing-restriction-within-limits)
- (12) route-modifications-within-limits
- (13) (or autopilot-cmd-mode-engaged flight-director-on)
- (14) (or autopilot-cmd-mode-engaged flight-director-on)
- (15) (not cdu-page-LEGS)
- (16) (and cdu-page-LEGS (not crossing-restriction-built) )
- (17) (and cdu-page-LEGS crossing-restriction-built)
- (18) (not mcp-altitude-within-limits)
- (19) (or (and (not current-altitude-within-limits) (not profile-within-limits-for-now) ) expedite-needed )
- (20) (and current-altitude-within-limits (not profile-within-limits-for-now) )
- (21) profile-within-limits-for-now
- (22) (or (not altitude-close-to-target) expedite-needed)
- (23) altitude-close-to-target
- (24) (or fl-ch-engaged vs-engaged)
- (25) profile-within-limits-for-now
- (26) vnav-engaged
- (27) (not fl-ch-engaged)
- (28) (not target-speed-within-limits)
- (29) (and (not vnav-engaged) (not capturing-required-altitude) )
- (30) (not cdu-page-LEGS)
- (31) (not crossing-restriction-built)
- (32) crossing-restriction-built
- (33) route-modifications-within-limits
- (34) (not mcp-altitude-within-limits)
- (35) mcp-altitude-within-limits
- (36) (not target-speed-within-limits)
- (37) mcp-altitude-within-limits

context specifier (indicating the primary VHF radio channel is not set to the assigned frequency), for example, leads the agent to tune the radio — not altogether impossible, and definitely an error, but an unlikely one. An incorrect

mode selection is a more likely error, and one likely to yield greater insights into system safety impacts. In fact, random manipulations more often produce inaction, or prevent errors of commission, because there is only one combination of

context specifiers that enable the search to proceed until it reaches an erroneous action, but numerous ways to stop the CATS prediction search above an action ‘leaf node.’s

Given these considerations, an error generation process, referred to as the ‘combinatorial approach’, was developed. The process works as follows: First, the process identifies any actions the operator should perform through a normal prediction process using the set of context specifiers that accurately represent the current operational context. It then uses a preset ‘level’ in the model to identify a set that contains all the activities in the *currently predicted* ‘branches’ of the model’s tree structure within a certain distance from an action. A slight variation, referred to as using the ‘expanded’ set, selects activities not only from the currently predicted branches in the tree, but from *all* branches below a predicted activity at a certain level. The results show that applying the combinatorial error generation process with the expanded set of activities is sometimes useful. (In some cases, for ‘narrow’ branches in the CATS model, both variations produce the same results.)

Having identified a set of relevant activities, the process next identifies *every* context specifier that appears in the CATS model conditions for performing each activity in the relevant set. By comparing this set to the set of true context specifiers, the process next identifies those that are ‘not present, but could be if the context is erroneously formulated’ and those that are ‘present, but might not be if the context is erroneously formulated.’ The process then follows a strict procedure that adds or removes, as necessary, *all combinations* of context specifiers from the true set. Thus, for each chosen combination of context specifiers, the process adds the ones that do not appear and removes the ones that

do appear in the true set. The process then predicts activities based on each of these revised sets.

Once it has produced a set of potentially erroneous predictions, the process invokes several filters. From each set of predicted activities, the process identifies actions, removes actions that happen to match correct actions, and removes duplicate sets of predicted actions. The process is summarized in Figure 3.

Let  $n$  denote the number of context specifiers that might erroneously appear, and  $m$  the number that might be erroneously left out of the current set. For a given true context, with  $n + m$  possible context specifiers present in the selected branch(es) of the CATS model, the number of possible other erroneous context specifier combinations  $N_e$  is:

$$N_e = \sum_{r=1}^{r=n+m} \frac{(n+m)!}{r!(n+m-r)!}$$

Thus, if six context specifiers appear in the selected branch(es) of the CATS model, and three are present in the true context set, there are 63 potentially erroneous context specifier combinations in which between one and six context specifiers have added and/or removed as required from the true set.

The process was validated using the version of CATS developed for Callantine (2002c). CATS was first modified to identify those points when its predictions change as a result of a salient change in the operational context. The error generation process was then performed, and the results were output to files. Appendix A compiles the results (with highly similar results deleted for brevity).

Each error-generation example in Appendix A shows the results of the error-generation process, first when applied to

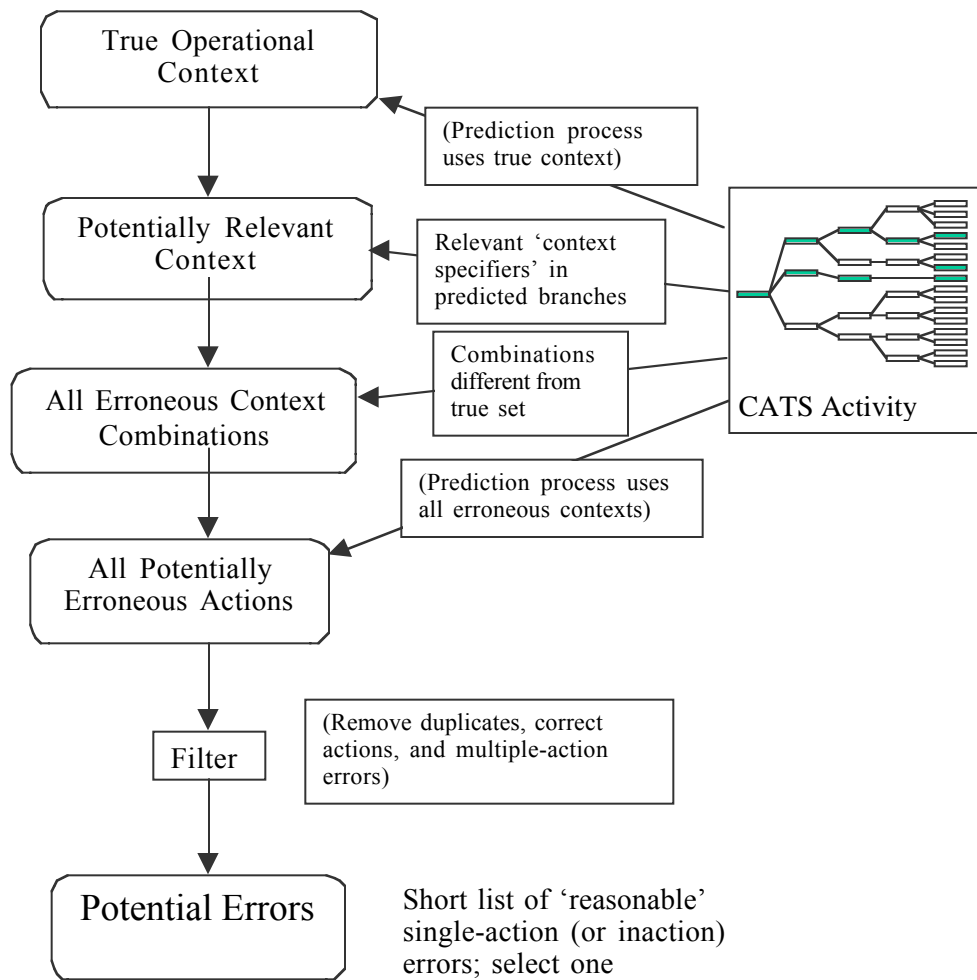


Figure 3. CATS agent error-generation process, which uses the CATS model and prediction process to produce errors ‘related’ to correct actions in a given context, and maintain links to the error context.

only the predicted branch(es) of the CATS model (from a selected predicted activity down to the predicted actions) then when applied to all branches that fall under a selected predicted activity. The results show that in every case, one possibility is for an error of omission; an agent using this approach would fail to perform a required action. In addition, the errors of commission that the process produces relate closely to the correct action that needs to be performed. The set of likely errors of commission expands to include a greater variety of errors when the error-generation process is applied to all branches, but the errors are still ‘in the

neighborhood’ of the true predicted action(s).

### Comparison of Error-Generation Results to Error-Detection Results

Callantine (2002a) presents the results of research in which CATS detected a flight crew error using flight data from the NASA Langley Boeing 757 ARIES aircraft. Specifically, the crew received a clearance to climb to a new altitude, and rather than first setting the new target altitude and then engaging an autopilot mode to climb, the crew slipped and

attempted to engage a autopilot mode without setting the new target altitude.

The situation when the crew first needs to set the new target altitude corresponds to the output at time 52875.07 in the results in Appendix A. The CATS prediction of the preferred action is for the crew to perform the 'dial MCP altitude knob' action to set the new target altitude. Using only the predicted branch of the CATS model, the error-generation process yields three 'single-element' errors: '[no action],' 'push FL CH switch,' and 'push LNAV switch.' In Callantine (2002a), the crew is noted to have actually performed the 'push VNAV switch' action. The reduced set of errors generated from only the predicted branch of the CATS model does not list this option; however, the potential errors generated from the expanded set activities does. Thus, this example supports the notion that using the expanded set of activities as input to the error generation process yields the required set of 'reasonable' errors that might occur in a particular operational context.

## **Conclusions and Further Research**

This research demonstrates that a CATS-based agent can produce the errors CATS detects using the combinatorial error generation process. For a full implementation, the error generation process would 'fire' probabilistically and, in addition, would probabilistically select a single error from the possible set. A rigorous validation strategy would entail connecting both a CATS-based agent and a CATS activity tracking implementation to the same controlled system. Then, when the CATS-based agent applies the error generation process to produce an error, CATS would detect the error online.

Further research is needed to construct such a test bed. In addition, research is required on how to make a given erroneous context persist long enough to produce 'lasting errors' that CATS would detect. In essence, the error-generation process would need to 'freeze' the erroneous context so that the agent would not correctly perform the action that was erroneously omitted on the next processing cycle. Also, if the context is allowed to shift to the true context, an error of commission would be followed immediately by a corrective action. This would limit the utility of a safety analysis utilizing such agents, because the agent would correct its errors before their effects could be manifested in the system.

The combinatorial error-generation process described here produces errors that are reasonable for a given context; the errors generated are not 'too far' from the correct actions in the true context. The process yields either 'inaction' or incorrect actions that appear in the same branch(es) of the CATS model as the correct actions. However, simply selecting these actions as possible errors does not provide information about the context that led to the error. The error generation process, on the other hand, automatically specifies the link between errors and context representation that may lead an operator to make them.

Sets of possible errors together with contextual information provide the necessary information for 'cognitive walkthrough'-style system safety analyses (Smith and Polson, 1999; Polson, Lewis, Rieman, and Wharton, 1992) for systems for which CATS models and prototype simulations can be constructed. With potential errors in hand, the analyst can focus examining aspects of the system's user interface that enable the operator to figure out what to do, whether what was done produced the desired effect, or

whether the action was in fact an error that needs to be corrected. The approach also may be thought of as automating aspects of related scenario-based analysis techniques, such as the Technique for Human Error Assessment (THEA) (Pocock, Harrison, Wright, and Johnson, 2001; Fields, Harrison, and Wright, 1997), because the errors derive from actual system context. The context-oriented focus also enables the error generation approach to support analyses of situation assessment problems that lead to errors (Endsley, 1999).

## References

- Callantine, T. (2000a). Online analysis of high-fidelity simulation data. *Proceedings of the 2000 Conference on Cognitive Systems Engineering in Process Control*, Taejon, Korea, November, 175-181.
- Callantine, T. (2001a). Agents for analysis and design of complex systems. *Proceedings of the 2001 IEEE International Conference on Systems, Man, and Cybernetics*, Tucson, AZ, October, 567-573.
- Callantine, T. (2001b). Analysis of flight operational quality assurance data using model-based activity tracking. SAE Technical Paper 2001-01-2640. Warrendale, PA: SAE International.
- Callantine, T. (2002a). Activity tracking for pilot error detection from flight data. *Proceedings of the 21st European Annual Conference on Human Decision Making and Control*, Glasgow, 16-26.
- Callantine, T. (2002b). *CATS-based agents that err*. NASA Contractor Report 2002-211858. Moffett Field, CA: NASA Ames Research Center.
- Callantine, T. (2002c). *CATS-based air traffic controller agents*. NASA Contractor Report 2002-211856. Moffett Field, CA: NASA Ames Research Center.
- Callantine, T. (2003). Air traffic controller agents. *Proceedings of the Second International Conference on Autonomous Agents and Multi-Agent Systems (AAMAS'03)*, Melbourne, Australia, July, to appear.
- Callantine, T., and Crane, B. (2000). Visualizing pilot-automation interaction. Abbot, K., Speyer, J., and Boy, G. (Eds). *HCI-Aero 2000 International Conference on Human-Computer Interaction in Aeronautics*, Toulouse: EURISCO, 87-92.
- Callantine, T., Mitchell, C., and Palmer, E. (1999). *GT-CATS: Tracking operator activities in complex systems*. NASA Technical Memorandum 208788. Moffett Field, CA: NASA Ames Research Center.
- Callantine, T., Prevôt, T., Battiste, V., and Johnson, W. (2003). Agent-based support for distributed air/ground traffic management simulation research. *Proceedings of the 2003 AIAA Modeling and Simulation Technologies Conference*, Austin, TX, August.
- Endsley, M. (1999). Situation awareness and human error: Designing to support human performance. *Proceedings of the High Consequence Systems Surety Conference*, Albuquerque, NM.
- Fields, R., Harrison, M., and Wright, P. (1997). *THEA: Human error analysis for requirements definition*. Technical Report 2941997, York, UK: University of York Computer Science Department.
- Hollnagel, E. (1991). The phenotype of erroneous actions: Implications for HCI design. In G. R. S. Weir and J. L. Alty (Eds.), *Human-Computer Interaction and*

*Complex Systems*. London: Academic Press, 73-121.

Hollnagel, E. (1993). *Human reliability analysis: Context and control*. London: Academic Press.

Pocock, S., Harrison, M., Wright, P., and Johnson, P. (2001). THEA: A technique for human error assessment early in design. In M. Hirose (Ed.), *Human-Computer Interaction: INTERACT'01*, Amsterdam: IOS Press, 247-254.

Polson, P., Lewis, C., Rieman, J., and Wharton, C. (1992). Cognitive walkthroughs: A method for theory-based evaluation of interfaces. *International Journal of Man-Machine Studies*, 36, 733-741.

Polson, P., and Smith, N. (1999). The Cockpit Cognitive Walkthrough. In R. Jensen, B. Cox, J. Callister, and R. Lavis (Eds.), *Proceedings of the 10th International Symposium on Aviation Psychology*, Columbus, OH: The Ohio State University Department of Aviation, 427-432.





## **Appendix A**

### **Output from Error Generation Test**

```

===== Error data at time 52584.395 =====
Predicting erroneous activities...
----- Vis a Vis Predicted Subtasks/Actions -----
Present, but need not be:
1: current-hdg-is-rwy-hdg
2: fd-on
Not present, but could be:
1: takeoff-thrust-set
2: thr-mode-engd
3: hdg-hold-engd
   [31 erroneous context specifier combinations]
Of 11 potentially erroneous predictions, 7 involve actions, and 4 do not

==> 5 possible errors (correct actions removed):
push N1 switch
push N1 switch set flight director switch
push HDG HOLD switch
[no action]
set flight director switch
=====> 4 single-element errors:
push N1 switch
push HDG HOLD switch
[no action]
set flight director switch

----- With All Subtasks/Actions In Play -----
Present, but need not be:
1: current-hdg-is-rwy-hdg
2: fd-on
Not present, but could be:
1: takeoff-thrust-set
2: thr-mode-engd
3: hdg-hold-engd
   [31 erroneous context specifier combinations]
Of 11 potentially erroneous predictions, 7 involve actions, and 4 do not

==> 5 possible errors (correct actions removed):
push N1 switch
push N1 switch set flight director switch
push HDG HOLD switch
[no action]
set flight director switch
=====> 4 single-element errors:
push N1 switch
push HDG HOLD switch
[no action]
set flight director switch

----- TRUE CONTEXT -----
start-of-run
at-armed
fd-on
programmed-route-within-limits
above-clean-speed
flight-surfaces-within-limits
gear-within-limits
current-hdg-is-rwy-hdg
target-alt-matches-after-takeoff-clb-alt
comm-freq-within-limits
mcp-alt-within-limits
not-capturing-rqd-alt
current-alt-within-limits
profile-okay-for-now
downpath-wpt-within-limits

```

intcpt-leg-to-wpt-within-limits

----- TRUE PREDICTIONS -----

fly glass cockpit aircraft  
perform takeoff roll  
initiate takeoff roll  
set takeoff thrust  
engage thrust mode  
push N1 switch  
hold runway heading  
hold rwy hdg using HDG HOLD  
engage HDG HOLD  
push HDG HOLD switch

----- TRUE PREDICTIONS (ACTIONS ONLY) -----

push N1 switch push HDG HOLD switch

```

===== Error data at time 52660.87 =====
Predicting erroneous activities...
----- Vis a Vis Predicted Subtasks/Actions -----
Present, but need not be:
1: profile-okay-for-now
2: not-capturing-rqd-alt
3: mcp-alt-within-limits
Not present, but could be:
1: track-okay-for-now
2: current-hdg-within-limits
3: vnav-engd
    [63 erroneous context specifier combinations]
    Of 20 potentially erroneous predictions, 16 involve actions, and 4 do not

==> 9 possible errors (correct actions removed):
[no action]
dial MCP altitude knob
push LNAV switch push VNAV switch
dial speed knob set speed brakes
push LNAV switch
push LNAV switch dial MCP altitude knob
dial MCP altitude knob dial speed knob set speed brakes
push LNAV switch dial speed knob set speed brakes
push LNAV switch dial MCP altitude knob dial speed knob set speed brakes
=====> 3 single-element errors:
[no action]
dial MCP altitude knob
push LNAV switch

----- With All Subtasks/Actions In Play -----
Present, but need not be:
1: target-heading-within-limits
2: hdg-sel-engd
3: profile-okay-for-now
4: not-capturing-rqd-alt
5: mcp-alt-within-limits
Not present, but could be:
1: track-okay-for-now
2: current-hdg-within-limits
3: hdg-hold-engd
4: vnav-engd
5: fms-target-speed-within-limits
6: speed-window-blank
7: target-speed-within-limits
8: drag-within-limits
    [2537 erroneous context specifier combinations]
    Of 134 potentially erroneous predictions, 126 involve actions, and 8 do not

==> 78 possible errors (correct actions removed):
dial heading knob push VNAV switch
push heading knob push VNAV switch
[no action]
dial heading knob push heading knob push VNAV switch
dial heading knob
dial heading knob dial MCP altitude knob
push LNAV switch push VNAV switch
dial heading knob dial speed knob set speed brakes
push heading knob
push heading knob dial MCP altitude knob
push HDG HOLD switch push VNAV switch
push heading knob dial speed knob set speed brakes
dial heading knob push heading knob
dial heading knob push heading knob dial MCP altitude knob
dial heading knob push heading knob dial speed knob set speed brakes

```

push LNAV switch  
 push LNAV switch dial MCP altitude knob  
 dial MCP altitude knob  
 dial heading knob dial MCP altitude knob dial speed knob set speed brakes  
 push LNAV switch dial speed knob set speed brakes  
 dial speed knob set speed brakes  
 dial heading knob set speed brakes  
 dial heading knob push speed knob dial speed knob set speed brakes  
 dial heading knob dial speed knob  
 push HDG HOLD switch  
 push HDG HOLD switch dial MCP altitude knob  
 dial heading knob push heading knob dial MCP altitude knob dial speed knob set speed  
 brakes  
 push HDG HOLD switch dial speed knob set speed brakes  
 dial heading knob push heading knob set speed brakes  
 dial heading knob push heading knob push speed knob dial speed knob set speed brakes  
 dial heading knob push heading knob dial speed knob  
 push LNAV switch dial MCP altitude knob dial speed knob set speed brakes  
 dial MCP altitude knob dial speed knob set speed brakes  
 dial heading knob dial MCP altitude knob set speed brakes  
 dial heading knob dial MCP altitude knob push speed knob dial speed knob set speed  
 brakes  
 dial heading knob dial MCP altitude knob dial speed knob  
 push LNAV switch set speed brakes  
 push LNAV switch push speed knob dial speed knob set speed brakes  
 push LNAV switch dial speed knob  
 set speed brakes  
 push speed knob dial speed knob set speed brakes  
 dial speed knob  
 dial heading knob push speed knob set speed brakes  
 dial heading knob push speed knob dial speed knob  
 push HDG HOLD switch dial MCP altitude knob dial speed knob set speed brakes  
 dial heading knob push heading knob dial MCP altitude knob set speed brakes  
 dial heading knob push heading knob dial MCP altitude knob push speed knob dial speed  
 knob set speed brakes  
 dial heading knob push heading knob dial MCP altitude knob dial speed knob  
 push HDG HOLD switch set speed brakes  
 push HDG HOLD switch push speed knob dial speed knob set speed brakes  
 push HDG HOLD switch dial speed knob  
 dial heading knob push heading knob push speed knob set speed brakes  
 dial heading knob push heading knob push speed knob dial speed knob  
 push LNAV switch dial MCP altitude knob set speed brakes  
 push LNAV switch dial MCP altitude knob push speed knob dial speed knob set speed  
 brakes  
 push LNAV switch dial MCP altitude knob dial speed knob  
 dial MCP altitude knob set speed brakes  
 dial MCP altitude knob push speed knob dial speed knob set speed brakes  
 dial MCP altitude knob dial speed knob  
 push HDG HOLD switch dial MCP altitude knob set speed brakes  
 push HDG HOLD switch dial MCP altitude knob push speed knob dial speed knob set speed  
 brakes  
 push HDG HOLD switch dial MCP altitude knob dial speed knob  
 dial heading knob push heading knob dial MCP altitude knob push speed knob set speed  
 brakes  
 dial heading knob push heading knob dial MCP altitude knob push speed knob dial speed  
 knob  
 push LNAV switch push speed knob set speed brakes  
 push LNAV switch push speed knob dial speed knob  
 push HDG HOLD switch push speed knob set speed brakes  
 push HDG HOLD switch push speed knob dial speed knob  
 dial heading knob push heading knob push speed knob  
 push LNAV switch dial MCP altitude knob push speed knob set speed brakes  
 push LNAV switch dial MCP altitude knob push speed knob dial speed knob  
 push HDG HOLD switch dial MCP altitude knob push speed knob set speed brakes

push HDG HOLD switch dial MCP altitude knob push speed knob dial speed knob  
dial heading knob push heading knob dial MCP altitude knob push speed knob  
push LNAV switch push speed knob  
push speed knob set speed brakes  
push speed knob dial speed knob  
push HDG HOLD switch push speed knob

=====> 8 single-element errors:

[no action]  
dial heading knob  
push heading knob  
push LNAV switch  
dial MCP altitude knob  
push HDG HOLD switch  
set speed brakes  
dial speed knob

----- TRUE CONTEXT -----

start-of-run  
above-runway-elev  
above-1000-feet-AGL  
at-armed  
fd-on  
takeoff-thrust-set  
programmed-route-within-limits  
above-clean-speed  
flight-surfaces-within-limits  
gear-within-limits  
target-alt-matches-after-takeoff-clb-alt  
comm-freq-within-limits  
mcp-alt-within-limits  
not-capturing-rqd-alt  
profile-okay-for-now  
hdg-sel-engd  
target-heading-within-limits  
downpath-wpt-within-limits  
intcpt-leg-to-wpt-within-limits

----- TRUE PREDICTIONS -----

fly glass cockpit aircraft  
navigate with AP or FD guidance  
navigate laterally  
fly heading  
fly using HDG SEL  
navigate vertically  
fly profile  
fly using VNAV  
engage VNAV  
push VNAV switch

----- TRUE PREDICTIONS (ACTIONS ONLY) -----

push VNAV switch

===== Error data at time 52715.12 =====

Predicting erroneous activities...

----- Vis a Vis Predicted Subtasks/Actions -----

Present, but need not be:

- 1: profile-okay-for-now
- 2: vnav-engd

Not present, but could be:

- 1: track-okay-for-now
- 2: current-hdg-within-limits
- 3: target-heading-within-limits
- 4: mcp-alt-within-limits

[63 erroneous context specifier combinations]

Of 23 potentially erroneous predictions, 17 involve actions, and 6 do not

==> 5 possible errors (correct actions removed):

push LNAV switch dial MCP altitude knob  
dial MCP altitude knob  
dial heading knob  
push LNAV switch  
[no action]

=====> 4 single-element errors:

dial MCP altitude knob  
dial heading knob  
push LNAV switch  
[no action]

----- With All Subtasks/Actions In Play -----

Present, but need not be:

- 1: hdg-sel-engd
- 2: profile-okay-for-now
- 3: vnav-engd
- 4: fms-target-speed-within-limits
- 5: speed-window-blank
- 6: drag-within-limits

Not present, but could be:

- 1: track-okay-for-now
- 2: current-hdg-within-limits
- 3: target-heading-within-limits
- 4: hdg-hold-engd
- 5: mcp-alt-within-limits
- 6: not-capturing-rqd-alt
- 7: target-speed-within-limits

[2537 erroneous context specifier combinations]

Of 103 potentially erroneous predictions, 100 involve actions, and 3 do not

==> 73 possible errors (correct actions removed):

dial heading knob push heading knob dial MCP altitude knob  
dial heading knob dial MCP altitude knob push speed knob dial speed knob  
dial heading knob push heading knob dial MCP altitude knob push speed knob dial speed knob  
dial heading knob push heading knob dial MCP altitude knob set speed brakes  
push LNAV switch dial MCP altitude knob  
push HDG HOLD switch dial MCP altitude knob  
push heading knob dial MCP altitude knob  
dial heading knob push heading knob  
dial MCP altitude knob  
dial heading knob  
dial heading knob push heading knob dial MCP altitude knob dial speed knob  
dial heading knob push heading knob dial MCP altitude knob push speed knob dial speed knob set speed brakes  
push LNAV switch dial MCP altitude knob push speed knob dial speed knob  
push HDG HOLD switch dial MCP altitude knob push speed knob dial speed knob  
push heading knob dial MCP altitude knob push speed knob dial speed knob  
dial heading knob push heading knob push speed knob dial speed knob

dial heading knob push heading knob dial MCP altitude knob push speed knob  
push LNAV switch dial MCP altitude knob set speed brakes  
push HDG HOLD switch dial MCP altitude knob set speed brakes  
push heading knob dial MCP altitude knob set speed brakes  
dial heading knob push heading knob set speed brakes  
push LNAV switch  
push HDG HOLD switch  
push heading knob  
dial heading knob push heading knob push VNAV switch  
dial heading knob push heading knob dial MCP altitude knob dial speed knob set speed  
brakes  
push LNAV switch dial MCP altitude knob dial speed knob  
push HDG HOLD switch dial MCP altitude knob dial speed knob  
push heading knob dial MCP altitude knob dial speed knob  
dial heading knob push heading knob dial speed knob  
push LNAV switch dial MCP altitude knob push speed knob dial speed knob set speed  
brakes  
push HDG HOLD switch dial MCP altitude knob push speed knob dial speed knob set speed  
brakes  
push heading knob dial MCP altitude knob push speed knob dial speed knob set speed  
brakes  
dial heading knob push heading knob push speed knob dial speed knob set speed brakes  
dial heading knob push heading knob dial MCP altitude knob push speed knob set speed  
brakes  
push LNAV switch push speed knob dial speed knob  
push LNAV switch dial MCP altitude knob push speed knob  
dial MCP altitude knob push speed knob dial speed knob  
push HDG HOLD switch push speed knob dial speed knob  
push HDG HOLD switch dial MCP altitude knob push speed knob  
push heading knob push speed knob dial speed knob  
push heading knob dial MCP altitude knob push speed knob  
dial heading knob push heading knob push speed knob  
push LNAV switch set speed brakes  
dial MCP altitude knob set speed brakes  
push HDG HOLD switch set speed brakes  
push heading knob set speed brakes  
[no action]  
push LNAV switch push VNAV switch  
push HDG HOLD switch push VNAV switch  
push heading knob push VNAV switch  
push LNAV switch dial MCP altitude knob dial speed knob set speed brakes  
push HDG HOLD switch dial MCP altitude knob dial speed knob set speed brakes  
push heading knob dial MCP altitude knob dial speed knob set speed brakes  
dial heading knob push heading knob dial speed knob set speed brakes  
push LNAV switch dial speed knob  
dial MCP altitude knob dial speed knob  
push HDG HOLD switch dial speed knob  
push heading knob dial speed knob  
push LNAV switch push speed knob dial speed knob set speed brakes  
push LNAV switch dial MCP altitude knob push speed knob set speed brakes  
dial MCP altitude knob push speed knob dial speed knob set speed brakes  
push HDG HOLD switch push speed knob dial speed knob set speed brakes  
push HDG HOLD switch dial MCP altitude knob push speed knob set speed brakes  
push heading knob push speed knob dial speed knob set speed brakes  
push heading knob dial MCP altitude knob push speed knob set speed brakes  
dial heading knob push heading knob push speed knob set speed brakes  
push LNAV switch push speed knob  
push speed knob dial speed knob  
dial MCP altitude knob push speed knob  
push HDG HOLD switch push speed knob  
push heading knob push speed knob  
push VNAV switch  
=====> 7 single-element errors:  
dial MCP altitude knob



dial heading knob  
push LNAV switch  
push HDG HOLD switch  
push heading knob  
[no action]  
push VNAV switch

----- TRUE CONTEXT -----

start-of-run  
above-runway-elev  
above-1000-feet-AGL  
at-armed  
fd-on  
programmed-route-within-limits  
above-clean-speed  
flight-surfaces-within-limits  
gear-within-limits  
comm-freq-within-limits  
profile-okay-for-now  
hdg-sel-engd  
vnav-engd  
drag-within-limits  
vs-within-limits  
speed-window-blank  
fms-target-speed-within-limits  
downpath-wpt-within-limits  
intcpt-leg-to-wpt-within-limits

----- TRUE PREDICTIONS -----

fly glass cockpit aircraft  
navigate with AP or FD guidance  
navigate laterally  
fly heading  
fly using HDG SEL  
adjust heading  
dial heading knob  
navigate vertically  
set target altitude  
dial MCP altitude knob  
fly profile  
fly using VNAV  
manage speed

----- TRUE PREDICTIONS (ACTIONS ONLY) -----

dial heading knob dial MCP altitude knob

```

===== Error data at time 52795.094 =====
Predicting erroneous activities...
----- Vis a Vis Predicted Subtasks/Actions -----
Present, but need not be:
1: profile-okay-for-now
2: vnav-engd
Not present, but could be:
1: track-okay-for-now
2: current-hdg-within-limits
3: target-heading-within-limits
   [31 erroneous context specifier combinations]
Of 11 potentially erroneous predictions, 7 involve actions, and 4 do not

==> 5 possible errors (correct actions removed):
dial heading knob push VNAV switch
push LNAV switch
[no action]
push LNAV switch push VNAV switch
push VNAV switch
=====> 3 single-element errors:
push LNAV switch
[no action]
push VNAV switch

----- With All Subtasks/Actions In Play -----
Present, but need not be:
1: hdg-sel-engd
2: profile-okay-for-now
3: vnav-engd
4: not-capturing-rqd-alt
5: mcp-alt-within-limits
6: fms-target-speed-within-limits
7: speed-window-blank
8: drag-within-limits
Not present, but could be:
1: track-okay-for-now
2: current-hdg-within-limits
3: target-heading-within-limits
4: hdg-hold-engd
5: target-speed-within-limits
   [2537 erroneous context specifier combinations]
Of 91 potentially erroneous predictions, 86 involve actions, and 5 do not

==> 64 possible errors (correct actions removed):
dial heading knob push heading knob
dial heading knob push VNAV switch
dial heading knob push heading knob push VNAV switch
dial heading knob push heading knob dial MCP altitude knob
dial heading knob push heading knob push speed knob dial speed knob
dial heading knob push heading knob set speed brakes
push LNAV switch
push HDG HOLD switch
push heading knob
dial heading knob dial MCP altitude knob
[no action]
push LNAV switch push VNAV switch
push HDG HOLD switch push VNAV switch
push heading knob push VNAV switch
dial heading knob push heading knob dial MCP altitude knob push speed knob dial speed
knob
dial heading knob push heading knob dial MCP altitude knob set speed brakes
push LNAV switch dial MCP altitude knob
push HDG HOLD switch dial MCP altitude knob
push heading knob dial MCP altitude knob

```

```

dial heading knob push heading knob dial speed knob
dial heading knob push heading knob push speed knob dial speed knob set speed brakes
push LNAV switch push speed knob dial speed knob
push HDG HOLD switch push speed knob dial speed knob
push heading knob push speed knob dial speed knob
dial heading knob push heading knob push speed knob
push LNAV switch set speed brakes
push HDG HOLD switch set speed brakes
push heading knob set speed brakes
push VNAV switch
dial heading knob push heading knob dial MCP altitude knob dial speed knob
dial heading knob push heading knob dial MCP altitude knob push speed knob dial speed
knob set speed brakes
push LNAV switch dial MCP altitude knob push speed knob dial speed knob
push HDG HOLD switch dial MCP altitude knob push speed knob dial speed knob
push heading knob dial MCP altitude knob push speed knob dial speed knob
dial heading knob push heading knob dial MCP altitude knob push speed knob
push LNAV switch dial MCP altitude knob set speed brakes
push HDG HOLD switch dial MCP altitude knob set speed brakes
push heading knob dial MCP altitude knob set speed brakes
dial MCP altitude knob
dial heading knob push heading knob dial speed knob set speed brakes
push LNAV switch dial speed knob
push HDG HOLD switch dial speed knob
push heading knob dial speed knob
push LNAV switch push speed knob dial speed knob set speed brakes
push HDG HOLD switch push speed knob dial speed knob set speed brakes
push heading knob push speed knob dial speed knob set speed brakes
dial heading knob push heading knob push speed knob set speed brakes
push LNAV switch push speed knob
push speed knob dial speed knob
push HDG HOLD switch push speed knob
push heading knob push speed knob
set speed brakes
dial heading knob push heading knob dial MCP altitude knob dial speed knob set speed
brakes
push LNAV switch dial MCP altitude knob dial speed knob
push HDG HOLD switch dial MCP altitude knob dial speed knob
push heading knob dial MCP altitude knob dial speed knob
push LNAV switch dial MCP altitude knob push speed knob dial speed knob set speed
brakes
push HDG HOLD switch dial MCP altitude knob push speed knob dial speed knob set speed
brakes
push heading knob dial MCP altitude knob push speed knob dial speed knob set speed
brakes
dial heading knob push heading knob dial MCP altitude knob push speed knob set speed
brakes
push LNAV switch dial MCP altitude knob push speed knob
dial MCP altitude knob push speed knob dial speed knob
push HDG HOLD switch dial MCP altitude knob push speed knob
push heading knob dial MCP altitude knob push speed knob
=====> 7 single-element errors:
push LNAV switch
push HDG HOLD switch
push heading knob
[no action]
push VNAV switch
dial MCP altitude knob
set speed brakes
----- TRUE CONTEXT -----
start-of-run
above-runway-elev
above-1000-feet-AGL
at-armed

```

fd-on  
programmed-route-within-limits  
above-clean-speed  
flight-surfaces-within-limits  
gear-within-limits  
comm-freq-within-limits  
mcp-alt-within-limits  
not-capturing-rqd-alt  
profile-okay-for-now  
hdg-sel-engd  
vnav-engd  
drag-within-limits  
speed-window-blank  
fms-target-speed-within-limits  
downpath-wpt-within-limits  
intcpt-leg-to-wpt-within-limits

----- TRUE PREDICTIONS -----

fly glass cockpit aircraft  
navigate with AP or FD guidance  
navigate laterally  
fly heading  
fly using HDG SEL  
adjust heading  
dial heading knob  
navigate vertically  
fly profile  
fly using VNAV  
manage speed

----- TRUE PREDICTIONS (ACTIONS ONLY) -----

dial heading knob

```
===== Error data at time 52875.07 =====
Predicting erroneous activities...
----- Vis a Vis Predicted Subtasks/Actions -----
Present, but need not be:
1: profile-okay-for-now
Not present, but could be:
1: track-okay-for-now
2: current-hdg-within-limits
3: mcp-alt-within-limits
4: vnav-engd
   [31 erroneous context specifier combinations]
Of 17 potentially erroneous predictions, 15 involve actions, and 2 do not
```

```
==> 9 possible errors (correct actions removed):
push LNAV switch dial MCP altitude knob
[no action]
dial MCP altitude knob dial speed knob set speed brakes
push FL CH switch
push LNAV switch
push LNAV switch dial MCP altitude knob dial speed knob set speed brakes
dial speed knob set speed brakes
push LNAV switch push FL CH switch
push LNAV switch dial speed knob set speed brakes
=====> 3 single-element errors:
[no action]
push FL CH switch
push LNAV switch
```

```
----- With All Subtasks/Actions In Play -----
Present, but need not be:
1: target-heading-within-limits
2: hdg-sel-engd
3: profile-okay-for-now
Not present, but could be:
1: track-okay-for-now
2: current-hdg-within-limits
3: hdg-hold-engd
4: mcp-alt-within-limits
5: vnav-engd
6: not-capturing-rqd-alt
7: fms-target-speed-within-limits
8: speed-window-blank
9: target-speed-within-limits
10: drag-within-limits
   [2537 erroneous context specifier combinations]
```

Of 137 potentially erroneous predictions, 133 involve actions, and 4 do not

```
==> 86 possible errors (correct actions removed):
dial heading knob dial MCP altitude knob
push heading knob dial MCP altitude knob
push LNAV switch dial MCP altitude knob
dial heading knob push heading knob dial MCP altitude knob
dial heading knob
dial heading knob dial MCP altitude knob dial speed knob set speed brakes
push HDG HOLD switch dial MCP altitude knob
push heading knob
push heading knob dial MCP altitude knob dial speed knob set speed brakes
dial heading knob push heading knob
dial heading knob push heading knob dial MCP altitude knob dial speed knob set speed
brakes
dial heading knob push FL CH switch
push LNAV switch
push LNAV switch dial MCP altitude knob dial speed knob set speed brakes
```

[no action]  
 dial MCP altitude knob dial speed knob set speed brakes  
 dial heading knob dial speed knob set speed brakes  
 dial heading knob push VNAV switch  
 dial heading knob dial MCP altitude knob set speed brakes  
 dial heading knob dial MCP altitude knob push speed knob dial speed knob set speed  
 brakes  
 dial heading knob dial MCP altitude knob dial speed knob  
 push heading knob push FL CH switch  
 push HDG HOLD switch  
 push HDG HOLD switch dial MCP altitude knob dial speed knob set speed brakes  
 dial heading knob push heading knob push FL CH switch  
 dial heading knob push heading knob dial speed knob set speed brakes  
 dial heading knob push heading knob push VNAV switch  
 dial heading knob push heading knob dial MCP altitude knob set speed brakes  
 dial heading knob push heading knob dial MCP altitude knob push speed knob dial speed  
 knob set speed brakes  
 dial heading knob push heading knob dial MCP altitude knob dial speed knob  
 push LNAV switch push FL CH switch  
 push FL CH switch  
 push LNAV switch dial speed knob set speed brakes  
 push LNAV switch push VNAV switch  
 push LNAV switch dial MCP altitude knob set speed brakes  
 push LNAV switch dial MCP altitude knob push speed knob dial speed knob set speed  
 brakes  
 push LNAV switch dial MCP altitude knob dial speed knob  
 dial speed knob set speed brakes  
 push VNAV switch  
 dial MCP altitude knob set speed brakes  
 dial MCP altitude knob push speed knob dial speed knob set speed brakes  
 dial MCP altitude knob dial speed knob  
 dial heading knob set speed brakes  
 dial heading knob push speed knob dial speed knob set speed brakes  
 dial heading knob dial speed knob  
 dial heading knob dial MCP altitude knob push speed knob set speed brakes  
 dial heading knob dial MCP altitude knob push speed knob dial speed knob  
 push HDG HOLD switch push FL CH switch  
 push HDG HOLD switch dial speed knob set speed brakes  
 push HDG HOLD switch push VNAV switch  
 push HDG HOLD switch dial MCP altitude knob set speed brakes  
 push HDG HOLD switch dial MCP altitude knob push speed knob dial speed knob set speed  
 brakes  
 push HDG HOLD switch dial MCP altitude knob dial speed knob  
 dial heading knob push heading knob set speed brakes  
 dial heading knob push heading knob push speed knob dial speed knob set speed brakes  
 dial heading knob push heading knob dial speed knob  
 dial heading knob push heading knob dial MCP altitude knob push speed knob set speed  
 brakes  
 dial heading knob push heading knob dial MCP altitude knob push speed knob dial speed  
 knob  
 push LNAV switch set speed brakes  
 push LNAV switch push speed knob dial speed knob set speed brakes  
 push LNAV switch dial speed knob  
 push LNAV switch dial MCP altitude knob push speed knob set speed brakes  
 push LNAV switch dial MCP altitude knob push speed knob dial speed knob  
 set speed brakes  
 push speed knob dial speed knob set speed brakes  
 dial speed knob  
 push HDG HOLD switch set speed brakes  
 push HDG HOLD switch push speed knob dial speed knob set speed brakes  
 push HDG HOLD switch dial speed knob  
 push HDG HOLD switch dial MCP altitude knob push speed knob set speed brakes  
 push HDG HOLD switch dial MCP altitude knob push speed knob dial speed knob  
 dial heading knob push heading knob push speed knob set speed brakes

dial heading knob push heading knob push speed knob dial speed knob  
dial heading knob push heading knob dial MCP altitude knob push speed knob  
push LNAV switch push speed knob set speed brakes  
push LNAV switch push speed knob dial speed knob  
push LNAV switch dial MCP altitude knob push speed knob  
dial MCP altitude knob push speed knob set speed brakes  
dial MCP altitude knob push speed knob dial speed knob  
push HDG HOLD switch push speed knob set speed brakes  
push HDG HOLD switch push speed knob dial speed knob  
push HDG HOLD switch dial MCP altitude knob push speed knob  
dial heading knob push heading knob push speed knob  
push LNAV switch push speed knob  
push speed knob set speed brakes  
push speed knob dial speed knob

=====> 9 single-element errors:

dial heading knob  
push heading knob  
push LNAV switch  
[no action]  
push HDG HOLD switch  
push FL CH switch  
push VNAV switch  
set speed brakes  
dial speed knob

----- TRUE CONTEXT -----

start-of-run  
above-runway-elev  
above-1000-feet-AGL  
at-armed  
fd-on  
programmed-route-within-limits  
above-clean-speed  
flight-surfaces-within-limits  
gear-within-limits  
comm-freq-within-limits  
profile-okay-for-now  
alt-hold-in-progress  
alt-hold-engd  
hdg-sel-engd  
target-heading-within-limits  
alt-far-from-target  
current-heading-within-limits  
downpath-wpt-within-limits  
intcpt-leg-to-wpt-within-limits

----- TRUE PREDICTIONS -----

fly glass cockpit aircraft  
navigate with AP or FD guidance  
navigate laterally  
fly heading  
fly using HDG SEL  
navigate vertically  
set target altitude  
dial MCP altitude knob  
fly profile  
fly using VNAV  
engage VNAV

----- TRUE PREDICTIONS (ACTIONS ONLY) -----

dial MCP altitude knob

```

===== Error data at time 52883.12 =====
Predicting erroneous activities...
----- Vis a Vis Predicted Subtasks/Actions -----
Present, but need not be:
1: profile-okay-for-now
2: vnav-engd
Not present, but could be:
1: track-okay-for-now
2: current-hdg-within-limits
3: mcp-alt-within-limits
4: fms-target-speed-within-limits
5: target-speed-within-limits
    [127 erroneous context specifier combinations]
    Of 29 potentially erroneous predictions, 23 involve actions, and 6 do not

```

```

==> 9 possible errors (correct actions removed):
dial MCP altitude knob
push LNAV switch dial MCP altitude knob dial speed knob
dial speed knob
push LNAV switch dial MCP altitude knob
push FL CH switch
[no action]
push LNAV switch dial speed knob
push LNAV switch push FL CH switch
push LNAV switch
=====> 5 single-element errors:
dial MCP altitude knob
dial speed knob
push FL CH switch
[no action]
push LNAV switch

```

```

----- With All Subtasks/Actions In Play -----
Present, but need not be:
1: target-heading-within-limits
2: hdg-sel-engd
3: profile-okay-for-now
4: vnav-engd
5: drag-within-limits
Not present, but could be:
1: track-okay-for-now
2: current-hdg-within-limits
3: hdg-hold-engd
4: mcp-alt-within-limits
5: not-capturing-rqd-alt
6: fms-target-speed-within-limits
7: speed-window-blank
8: target-speed-within-limits
    [2537 erroneous context specifier combinations]
    Of 157 potentially erroneous predictions, 151 involve actions, and 6 do not

```

```

==> 94 possible errors (correct actions removed):
dial heading knob dial MCP altitude knob dial speed knob
push heading knob dial MCP altitude knob dial speed knob
dial MCP altitude knob
dial heading knob push heading knob dial MCP altitude knob dial speed knob
dial heading knob dial MCP altitude knob
dial heading knob dial MCP altitude knob dial speed knob set speed brakes
push LNAV switch dial MCP altitude knob dial speed knob
dial heading knob dial speed knob
dial heading knob dial MCP altitude knob push speed knob dial speed knob
push heading knob dial MCP altitude knob
push heading knob dial MCP altitude knob dial speed knob set speed brakes
push HDG HOLD switch dial MCP altitude knob dial speed knob

```



push heading knob dial speed knob  
 push heading knob dial MCP altitude knob push speed knob dial speed knob  
 dial heading knob push heading knob dial MCP altitude knob  
 dial heading knob push heading knob dial MCP altitude knob dial speed knob set speed  
 brakes  
 dial heading knob push heading knob dial speed knob  
 dial heading knob push heading knob dial MCP altitude knob push speed knob dial speed  
 knob  
 push LNAV switch dial MCP altitude knob  
 dial heading knob push FL CH switch  
 dial heading knob  
 push LNAV switch dial MCP altitude knob dial speed knob set speed brakes  
 dial MCP altitude knob dial speed knob set speed brakes  
 dial heading knob dial speed knob set speed brakes  
 dial heading knob dial MCP altitude knob set speed brakes  
 dial heading knob dial MCP altitude knob push speed knob dial speed knob set speed  
 brakes  
 push LNAV switch dial speed knob  
 push LNAV switch dial MCP altitude knob push speed knob dial speed knob  
 dial speed knob  
 dial MCP altitude knob push speed knob dial speed knob  
 dial heading knob push speed knob dial speed knob  
 dial heading knob dial MCP altitude knob push speed knob  
 push HDG HOLD switch dial MCP altitude knob  
 push heading knob push FL CH switch  
 push heading knob  
 push HDG HOLD switch dial MCP altitude knob dial speed knob set speed brakes  
 dial heading knob push heading knob push FL CH switch  
 dial heading knob push heading knob  
 dial heading knob push heading knob dial speed knob set speed brakes  
 dial heading knob push heading knob dial MCP altitude knob set speed brakes  
 dial heading knob push heading knob dial MCP altitude knob push speed knob dial speed  
 knob set speed brakes  
 push HDG HOLD switch dial speed knob  
 push HDG HOLD switch dial MCP altitude knob push speed knob dial speed knob  
 dial heading knob push heading knob push speed knob dial speed knob  
 dial heading knob push heading knob dial MCP altitude knob push speed knob  
 push LNAV switch push FL CH switch  
 push FL CH switch  
 push LNAV switch  
 [no action]  
 dial heading knob push VNAV switch  
 push LNAV switch dial speed knob set speed brakes  
 push LNAV switch dial MCP altitude knob set speed brakes  
 push LNAV switch dial MCP altitude knob push speed knob dial speed knob set speed  
 brakes  
 dial speed knob set speed brakes  
 dial MCP altitude knob set speed brakes  
 dial MCP altitude knob push speed knob dial speed knob set speed brakes  
 dial heading knob set speed brakes  
 dial heading knob push speed knob dial speed knob set speed brakes  
 dial heading knob dial MCP altitude knob push speed knob set speed brakes  
 push LNAV switch push speed knob dial speed knob  
 push LNAV switch dial MCP altitude knob push speed knob  
 push speed knob dial speed knob  
 dial MCP altitude knob push speed knob  
 dial heading knob push speed knob  
 push HDG HOLD switch push FL CH switch  
 push HDG HOLD switch  
 dial heading knob push heading knob push VNAV switch  
 push HDG HOLD switch dial speed knob set speed brakes  
 push HDG HOLD switch dial MCP altitude knob set speed brakes  
 push HDG HOLD switch dial MCP altitude knob push speed knob dial speed knob set speed  
 brakes

```

dial heading knob push heading knob set speed brakes
dial heading knob push heading knob push speed knob dial speed knob set speed brakes
dial heading knob push heading knob dial MCP altitude knob push speed knob set speed
brakes
push HDG HOLD switch push speed knob dial speed knob
push HDG HOLD switch dial MCP altitude knob push speed knob
dial heading knob push heading knob push speed knob
push LNAV switch push VNAV switch
push VNAV switch
push LNAV switch set speed brakes
push LNAV switch push speed knob dial speed knob set speed brakes
push LNAV switch dial MCP altitude knob push speed knob set speed brakes
set speed brakes
push speed knob dial speed knob set speed brakes
push HDG HOLD switch push VNAV switch
push HDG HOLD switch set speed brakes
push HDG HOLD switch push speed knob dial speed knob set speed brakes
push HDG HOLD switch dial MCP altitude knob push speed knob set speed brakes
dial heading knob push heading knob push speed knob set speed brakes
push LNAV switch push speed knob
push HDG HOLD switch push speed knob
push LNAV switch push speed knob set speed brakes
dial MCP altitude knob push speed knob set speed brakes
push HDG HOLD switch push speed knob set speed brakes
push speed knob
=====> 11 single-element errors:
dial MCP altitude knob
dial heading knob
dial speed knob
push heading knob
push FL CH switch
push LNAV switch
[no action]
push HDG HOLD switch
push VNAV switch
set speed brakes
push speed knob
----- TRUE CONTEXT -----
start-of-run
above-runway-elev
above-1000-feet-AGL
at-armed
fd-on
programmed-route-within-limits
above-clean-speed
flight-surfaces-within-limits
gear-within-limits
comm-freq-within-limits
profile-okay-for-now
alt-hold-in-progress
alt-hold-engd
hdg-sel-engd
vnav-engd
drag-within-limits
target-heading-within-limits
alt-far-from-target
current-heading-within-limits
downpath-wpt-within-limits
intcpt-leg-to-wpt-within-limits
----- TRUE PREDICTIONS -----
fly glass cockpit aircraft
navigate with AP or FD guidance
navigate laterally

```

fly heading  
fly using HDG SEL  
navigate vertically  
set target altitude  
dial MCP altitude knob  
fly profile  
fly using VNAV  
manage speed  
engage Speed Intervention  
dial speed knob

----- TRUE PREDICTIONS (ACTIONS ONLY) -----  
dial MCP altitude knob dial speed knob

```

===== Error data at time 54310.76 =====
Predicting erroneous activities...
----- Vis a Vis Predicted Subtasks/Actions -----
Present, but need not be:
1: track-okay-for-now
2: alt-far-from-target
3: flch-engd
Not present, but could be:
1: mcp-alt-within-limits
2: expedite-needed
3: current-alt-within-limits
4: profile-okay-for-now
5: vs-engd
6: target-speed-within-limits
   [511 erroneous context specifier combinations]
   Of 80 potentially erroneous predictions, 75 involvve actions, and 5 do not

==> 23 possible errors (correct actions removed):
dial heading knob push heading knob dial MCP altitude knob dial speed knob
dial MCP altitude knob
dial speed knob
dial MCP altitude knob push ALT HOLD switch
dial heading knob push heading knob dial MCP altitude knob
dial heading knob push heading knob dial speed knob
dial heading knob push heading knob dial MCP altitude knob push ALT HOLD switch
push FL CH switch
push ALT HOLD switch
[no action]
dial MCP altitude knob dial speed knob push ALT HOLD switch
dial heading knob push heading knob push FL CH switch
dial heading knob push heading knob push ALT HOLD switch
dial heading knob push heading knob
dial heading knob push heading knob dial MCP altitude knob dial speed knob push ALT
HOLD switch
push FL CH switch dial speed knob
dial speed knob push ALT HOLD switch
dial heading knob push heading knob push FL CH switch dial speed knob
dial heading knob push heading knob dial speed knob push ALT HOLD switch
push FL CH switch push ALT HOLD switch
dial heading knob push heading knob push FL CH switch push ALT HOLD switch
push FL CH switch dial speed knob push ALT HOLD switch
dial heading knob push heading knob push FL CH switch dial speed knob push ALT HOLD
switch
=====> 5 single-element errors:
dial MCP altitude knob
dial speed knob
push FL CH switch
push ALT HOLD switch
[no action]
----- With All Subtasks/Actions In Play -----
Present, but need not be:
1: track-okay-for-now
2: lnav-engd
3: alt-far-from-target
4: flch-engd
Not present, but could be:
1: mcp-alt-within-limits
2: expedite-needed
3: current-alt-within-limits
4: profile-okay-for-now
5: alt-close-to-target
6: vs-engd
7: vs-within-limits
8: target-speed-within-limits

```

[4095 erroneous context specifier combinations]

Of 432 potentially erroneous predictions, 424 involve actions, and 8 do not

==> 131 possible errors (correct actions removed):

dial heading knob push heading knob dial MCP altitude knob dial speed knob  
push LNAV switch dial MCP altitude knob dial speed knob  
dial MCP altitude knob  
dial speed knob  
dial MCP altitude knob push ALT HOLD switch  
dial MCP altitude knob push V/S switch dial V/S wheel dial speed knob  
dial heading knob push heading knob dial MCP altitude knob  
dial heading knob push heading knob dial speed knob  
dial heading knob push heading knob dial MCP altitude knob push ALT HOLD switch  
dial heading knob push heading knob dial MCP altitude knob push V/S switch dial V/S  
wheel dial speed knob  
push LNAV switch dial MCP altitude knob  
push LNAV switch dial speed knob  
push LNAV switch dial MCP altitude knob push ALT HOLD switch  
push LNAV switch dial MCP altitude knob push V/S switch dial V/S wheel dial speed knob  
push FL CH switch  
dial MCP altitude knob push V/S switch dial V/S wheel  
push ALT HOLD switch  
[no action]  
push V/S switch dial V/S wheel dial speed knob  
dial MCP altitude knob dial speed knob push ALT HOLD switch  
dial MCP altitude knob dial V/S wheel dial speed knob  
dial MCP altitude knob push V/S switch dial speed knob  
dial heading knob push heading knob push FL CH switch  
dial heading knob push heading knob dial MCP altitude knob push V/S switch dial V/S  
wheel  
dial heading knob push heading knob push ALT HOLD switch  
dial heading knob push heading knob  
dial heading knob push heading knob push V/S switch dial V/S wheel dial speed knob  
dial heading knob push heading knob dial MCP altitude knob dial speed knob push ALT  
HOLD switch  
dial heading knob push heading knob dial MCP altitude knob dial V/S wheel dial speed  
knob  
dial heading knob push heading knob dial MCP altitude knob push V/S switch dial speed  
knob  
push LNAV switch push FL CH switch  
push LNAV switch dial MCP altitude knob push V/S switch dial V/S wheel  
push LNAV switch push ALT HOLD switch  
push LNAV switch  
push LNAV switch push V/S switch dial V/S wheel dial speed knob  
push LNAV switch dial MCP altitude knob dial speed knob push ALT HOLD switch  
push LNAV switch dial MCP altitude knob dial V/S wheel dial speed knob  
push LNAV switch dial MCP altitude knob push V/S switch dial speed knob  
push FL CH switch push V/S switch dial V/S wheel  
push FL CH switch dial speed knob  
dial MCP altitude knob push V/S switch  
dial speed knob push ALT HOLD switch  
dial V/S wheel dial speed knob  
push V/S switch dial speed knob  
push V/S switch dial V/S wheel  
dial MCP altitude knob push V/S switch dial V/S wheel dial speed knob push ALT HOLD  
switch  
dial MCP altitude knob dial V/S wheel  
dial heading knob push heading knob push FL CH switch push V/S switch dial V/S wheel  
dial heading knob push heading knob push FL CH switch dial speed knob  
dial heading knob push heading knob dial MCP altitude knob push V/S switch  
dial heading knob push heading knob dial speed knob push ALT HOLD switch  
dial heading knob push heading knob dial V/S wheel dial speed knob  
dial heading knob push heading knob push V/S switch dial speed knob  
dial heading knob push heading knob push V/S switch dial V/S wheel

dial heading knob push heading knob dial MCP altitude knob push V/S switch dial V/S wheel dial speed knob push ALT HOLD switch  
dial heading knob push heading knob dial MCP altitude knob dial V/S wheel  
push LNAV switch push FL CH switch push V/S switch dial V/S wheel  
push LNAV switch push FL CH switch dial speed knob  
push LNAV switch dial MCP altitude knob push V/S switch  
push LNAV switch dial speed knob push ALT HOLD switch  
push LNAV switch dial V/S wheel dial speed knob  
push LNAV switch push V/S switch dial speed knob  
push LNAV switch push V/S switch dial V/S wheel  
push LNAV switch dial MCP altitude knob push V/S switch dial V/S wheel dial speed knob  
push ALT HOLD switch  
push LNAV switch dial MCP altitude knob dial V/S wheel  
push FL CH switch push ALT HOLD switch  
push FL CH switch dial V/S wheel dial speed knob  
push FL CH switch push V/S switch  
dial MCP altitude knob push V/S switch dial V/S wheel push ALT HOLD switch  
push V/S switch dial V/S wheel dial speed knob push ALT HOLD switch  
dial V/S wheel  
push V/S switch  
dial MCP altitude knob dial V/S wheel dial speed knob push ALT HOLD switch  
dial MCP altitude knob push V/S switch dial speed knob push ALT HOLD switch  
dial heading knob push heading knob push FL CH switch push ALT HOLD switch  
dial heading knob push heading knob push FL CH switch dial V/S wheel dial speed knob  
dial heading knob push heading knob push FL CH switch push V/S switch  
dial heading knob push heading knob dial MCP altitude knob push V/S switch dial V/S wheel push ALT HOLD switch  
dial heading knob push heading knob push V/S switch dial V/S wheel dial speed knob  
push ALT HOLD switch  
dial heading knob push heading knob dial V/S wheel  
dial heading knob push heading knob push V/S switch  
dial heading knob push heading knob dial MCP altitude knob dial V/S wheel dial speed knob push ALT HOLD switch  
dial heading knob push heading knob dial MCP altitude knob push V/S switch dial speed knob push ALT HOLD switch  
push LNAV switch push FL CH switch push ALT HOLD switch  
push LNAV switch push FL CH switch dial V/S wheel dial speed knob  
push LNAV switch push FL CH switch push V/S switch  
push LNAV switch dial MCP altitude knob push V/S switch dial V/S wheel push ALT HOLD switch  
push LNAV switch push V/S switch dial V/S wheel dial speed knob push ALT HOLD switch  
push LNAV switch dial V/S wheel  
push LNAV switch push V/S switch  
push LNAV switch dial MCP altitude knob dial V/S wheel dial speed knob push ALT HOLD switch  
push LNAV switch dial MCP altitude knob push V/S switch dial speed knob push ALT HOLD switch  
push FL CH switch push V/S switch dial V/S wheel push ALT HOLD switch  
push FL CH switch dial speed knob push ALT HOLD switch  
push FL CH switch dial V/S wheel  
dial MCP altitude knob push V/S switch push ALT HOLD switch  
dial V/S wheel dial speed knob push ALT HOLD switch  
push V/S switch dial speed knob push ALT HOLD switch  
push V/S switch dial V/S wheel push ALT HOLD switch  
dial MCP altitude knob dial V/S wheel push ALT HOLD switch  
dial heading knob push heading knob push FL CH switch push V/S switch dial V/S wheel  
push ALT HOLD switch  
dial heading knob push heading knob push FL CH switch dial speed knob push ALT HOLD switch  
dial heading knob push heading knob push FL CH switch dial V/S wheel  
dial heading knob push heading knob dial MCP altitude knob push V/S switch push ALT HOLD switch  
dial heading knob push heading knob dial V/S wheel dial speed knob push ALT HOLD switch

dial heading knob push heading knob push V/S switch dial speed knob push ALT HOLD switch  
dial heading knob push heading knob push V/S switch dial V/S wheel push ALT HOLD switch  
dial heading knob push heading knob dial MCP altitude knob dial V/S wheel push ALT HOLD switch  
push LNAV switch push FL CH switch push V/S switch dial V/S wheel push ALT HOLD switch  
push LNAV switch push FL CH switch dial speed knob push ALT HOLD switch  
push LNAV switch push FL CH switch dial V/S wheel  
push LNAV switch dial MCP altitude knob push V/S switch push ALT HOLD switch  
push LNAV switch dial V/S wheel dial speed knob push ALT HOLD switch  
push LNAV switch push V/S switch dial speed knob push ALT HOLD switch  
push LNAV switch push V/S switch dial V/S wheel push ALT HOLD switch  
push LNAV switch dial MCP altitude knob dial V/S wheel push ALT HOLD switch  
push FL CH switch dial V/S wheel dial speed knob push ALT HOLD switch  
push FL CH switch push V/S switch push ALT HOLD switch  
dial V/S wheel push ALT HOLD switch  
push V/S switch push ALT HOLD switch  
dial heading knob push heading knob push FL CH switch dial V/S wheel dial speed knob push ALT HOLD switch  
dial heading knob push heading knob push FL CH switch push V/S switch push ALT HOLD switch  
dial heading knob push heading knob dial V/S wheel push ALT HOLD switch  
dial heading knob push heading knob push V/S switch push ALT HOLD switch  
push LNAV switch push FL CH switch dial V/S wheel dial speed knob push ALT HOLD switch  
push LNAV switch push FL CH switch push V/S switch push ALT HOLD switch  
push LNAV switch dial V/S wheel push ALT HOLD switch  
push LNAV switch push V/S switch push ALT HOLD switch  
push FL CH switch dial V/S wheel push ALT HOLD switch  
dial heading knob push heading knob push FL CH switch dial V/S wheel push ALT HOLD switch  
push LNAV switch push FL CH switch dial V/S wheel push ALT HOLD switch  
===== > 8 single-element errors:

----- TRUE CONTEXT -----

start-of-run  
above-runway-elev  
above-1000-feet-AGL  
at-armed  
fd-on  
programmed-route-within-limits  
above-clean-speed  
flight-surfaces-within-limits  
gear-within-limits  
comm-freq-within-limits  
track-okay-for-now  
flch-engd  
lnav-engd  
alt-far-from-target  
downpath-wpt-within-limits  
intcpt-leg-to-wpt-within-limits

----- TRUE PREDICTIONS -----

fly glass cockpit aircraft  
navigate with AP or FD guidance  
navigate laterally  
fly track

fly using LNAV  
navigate vertically  
set target altitude  
dial MCP altitude knob  
achieve/maintain altitude  
fly using FL CH  
manage speed  
adjust speed  
dial speed knob

----- TRUE PREDICTIONS (ACTIONS ONLY) -----  
dial MCP altitude knob dial speed knob



```
===== Error data at time 54440.086 =====
Predicting erroneous activities...
----- Vis a Vis Predicted Subtasks/Actions -----
Present, but need not be:
1: track-okay-for-now
2: alt-far-from-target
3: mcp-alt-within-limits
Not present, but could be:
1: expedite-needed
2: current-alt-within-limits
3: profile-okay-for-now
4: flch-engd
    [127 erroneous context specifier combinations]
    Of 40 potentially erroneous predictions, 39 involve actions, and 1 do not
```

```
==> 29 possible errors (correct actions removed):
dial heading knob push heading knob push FL CH switch
[no action]
dial MCP altitude knob
push ALT HOLD switch
push speed knob dial speed knob
dial speed knob
dial heading knob push heading knob
dial heading knob push heading knob dial MCP altitude knob
dial heading knob push heading knob push ALT HOLD switch
dial heading knob push heading knob push speed knob dial speed knob
dial heading knob push heading knob dial speed knob
dial MCP altitude knob push ALT HOLD switch
dial MCP altitude knob push speed knob dial speed knob
dial MCP altitude knob dial speed knob
push FL CH switch push ALT HOLD switch
push FL CH switch push speed knob dial speed knob
dial heading knob push heading knob dial MCP altitude knob push ALT HOLD switch
dial heading knob push heading knob dial MCP altitude knob push speed knob dial speed
knob
dial heading knob push heading knob dial MCP altitude knob dial speed knob
dial heading knob push heading knob push FL CH switch push ALT HOLD switch
dial heading knob push heading knob push FL CH switch push speed knob dial speed knob
dial speed knob push ALT HOLD switch
dial speed knob push speed knob dial speed knob
dial heading knob push heading knob dial speed knob push ALT HOLD switch
dial heading knob push heading knob dial speed knob push speed knob dial speed knob
dial MCP altitude knob dial speed knob push ALT HOLD switch
dial MCP altitude knob dial speed knob push speed knob dial speed knob
dial heading knob push heading knob dial MCP altitude knob dial speed knob push ALT
HOLD switch
dial heading knob push heading knob dial MCP altitude knob dial speed knob push speed
knob dial speed knob
=====> 4 single-element errors:
[no action]
dial MCP altitude knob
push ALT HOLD switch
dial speed knob
```

```
----- With All Subtasks/Actions In Play -----
Present, but need not be:
1: track-okay-for-now
2: lnav-engd
3: alt-far-from-target
4: mcp-alt-within-limits
Not present, but could be:
1: expedite-needed
2: current-alt-within-limits
3: profile-okay-for-now
```

4: flch-engd  
 5: alt-close-to-target  
 6: vs-engd  
 7: vs-within-limits  
 8: target-speed-within-limits  
 [4095 erroneous context specifier combinations]  
 Of 456 potentially erroneous predictions, 451 involve actions, and 5 do not

==> 218 possible errors (correct actions removed):  
 dial heading knob push heading knob push FL CH switch  
 push LNAV switch push FL CH switch  
 [no action]  
 dial MCP altitude knob  
 push ALT HOLD switch  
 push speed knob dial speed knob  
 dial speed knob  
 push FL CH switch push V/S switch dial V/S wheel  
 push FL CH switch dial speed knob  
 dial heading knob push heading knob  
 dial heading knob push heading knob dial MCP altitude knob  
 dial heading knob push heading knob push ALT HOLD switch  
 dial heading knob push heading knob push speed knob dial speed knob  
 dial heading knob push heading knob dial speed knob  
 dial heading knob push heading knob push FL CH switch push V/S switch dial V/S wheel  
 dial heading knob push heading knob push FL CH switch dial speed knob  
 push LNAV switch  
 push LNAV switch dial MCP altitude knob  
 push LNAV switch push ALT HOLD switch  
 push LNAV switch push speed knob dial speed knob  
 push LNAV switch dial speed knob  
 push LNAV switch push FL CH switch push V/S switch dial V/S wheel  
 push LNAV switch push FL CH switch dial speed knob  
 push V/S switch dial V/S wheel  
 dial MCP altitude knob push ALT HOLD switch  
 dial MCP altitude knob push speed knob dial speed knob  
 dial MCP altitude knob dial speed knob  
 dial MCP altitude knob push V/S switch dial V/S wheel  
 push FL CH switch push ALT HOLD switch  
 push FL CH switch push speed knob dial speed knob  
 push speed knob  
 push V/S switch dial V/S wheel dial speed knob  
 push FL CH switch dial V/S wheel dial speed knob  
 push FL CH switch push V/S switch  
 dial heading knob push heading knob push V/S switch dial V/S wheel  
 dial heading knob push heading knob dial MCP altitude knob push ALT HOLD switch  
 dial heading knob push heading knob dial MCP altitude knob push speed knob dial speed knob  
 dial heading knob push heading knob dial MCP altitude knob dial speed knob  
 dial heading knob push heading knob dial MCP altitude knob push V/S switch dial V/S wheel  
 dial heading knob push heading knob push FL CH switch push ALT HOLD switch  
 dial heading knob push heading knob push FL CH switch push speed knob dial speed knob  
 dial heading knob push heading knob push speed knob  
 dial heading knob push heading knob push V/S switch dial V/S wheel dial speed knob  
 dial heading knob push heading knob push FL CH switch dial V/S wheel dial speed knob  
 dial heading knob push heading knob push FL CH switch push V/S switch  
 push LNAV switch push V/S switch dial V/S wheel  
 push LNAV switch dial MCP altitude knob push ALT HOLD switch  
 push LNAV switch dial MCP altitude knob push speed knob dial speed knob  
 push LNAV switch dial MCP altitude knob dial speed knob  
 push LNAV switch dial MCP altitude knob push V/S switch dial V/S wheel  
 push LNAV switch push FL CH switch push ALT HOLD switch  
 push LNAV switch push FL CH switch push speed knob dial speed knob  
 push LNAV switch push speed knob







dial heading knob push heading knob dial MCP altitude knob push V/S switch dial speed knob push ALT HOLD switch  
 dial heading knob push heading knob dial MCP altitude knob dial V/S wheel push ALT HOLD switch  
 dial heading knob push heading knob dial MCP altitude knob push V/S switch dial speed knob push speed knob dial speed knob  
 dial heading knob push heading knob dial MCP altitude knob dial V/S wheel push speed knob  
 dial heading knob push heading knob dial MCP altitude knob push V/S switch push speed knob  
 dial heading knob push heading knob dial V/S wheel push ALT HOLD switch  
 dial heading knob push heading knob push V/S switch push ALT HOLD switch  
 dial heading knob push heading knob dial V/S wheel push speed knob  
 dial heading knob push heading knob push V/S switch push speed knob  
 push LNAV switch dial MCP altitude knob push V/S switch dial speed knob push ALT HOLD switch  
 push LNAV switch dial MCP altitude knob dial V/S wheel push ALT HOLD switch  
 push LNAV switch dial MCP altitude knob push V/S switch dial speed knob push speed knob dial speed knob  
 push LNAV switch dial MCP altitude knob dial V/S wheel push speed knob  
 push LNAV switch dial MCP altitude knob push V/S switch push speed knob  
 push LNAV switch dial V/S wheel push ALT HOLD switch  
 push LNAV switch push V/S switch push ALT HOLD switch  
 push LNAV switch dial V/S wheel push speed knob  
 push LNAV switch push V/S switch push speed knob  
 =====> 8 single-element errors:

[no action]  
 dial MCP altitude knob  
 push ALT HOLD switch  
 dial speed knob  
 push LNAV switch  
 push speed knob  
 push V/S switch  
 dial V/S wheel

----- TRUE CONTEXT -----

start-of-run  
 above-runway-elev  
 above-1000-feet-AGL  
 at-armed  
 fd-on  
 programmed-route-within-limits  
 above-clean-speed  
 flight-surfaces-within-limits  
 gear-within-limits  
 comm-freq-within-limits  
 track-okay-for-now  
 mcp-alt-within-limits  
 not-capturing-rqd-alt  
 lnav-engd  
 vnav-engd  
 drag-within-limits  
 speed-window-blank  
 alt-far-from-target  
 downpath-wpt-within-limits  
 intcpt-leg-to-wpt-within-limits

----- TRUE PREDICTIONS -----

fly glass cockpit aircraft  
 navigate with AP or FD guidance  
 navigate laterally  
 fly track  
 fly using LNAV  
 navigate vertically  
 achieve/maintain altitude

fly using FL CH  
engage FL CH  
push FL CH switch

----- TRUE PREDICTIONS (ACTIONS ONLY) -----  
push FL CH switch

```

===== Error data at time 54577.984 =====
Predicting erroneous activities...
----- Vis a Vis Predicted Subtasks/Actions -----
Present, but need not be:
1: track-okay-for-now
2: profile-okay-for-now
Not present, but could be:
1: lnav-engd
2: vnav-engd
    [15 erroneous context specifier combinations]
    Of 8 potentially erroneous predictions, 7 involve actions, and 1 do not

==> 8 possible errors (correct actions removed):
dial heading knob push heading knob
push LNAV switch dial speed knob
[no action]
push LNAV switch dial speed knob set speed brakes
dial heading knob push heading knob dial speed knob
dial heading knob push heading knob dial speed knob set speed brakes
dial speed knob
dial speed knob set speed brakes
=====> 2 single-element errors:
[no action]
dial speed knob

----- With All Subtasks/Actions In Play -----
Present, but need not be:
1: track-okay-for-now
2: profile-okay-for-now
3: mcp-alt-within-limits
Not present, but could be:
1: lnav-engd
2: vnav-engd
3: not-capturing-rqd-alt
4: fms-target-speed-within-limits
5: speed-window-blank
6: target-speed-within-limits
7: drag-within-limits
    [1023 erroneous context specifier combinations]
    Of 81 potentially erroneous predictions, 77 involve actions, and 4 do not

==> 56 possible errors (correct actions removed):
dial heading knob push heading knob
push LNAV switch dial speed knob
push LNAV switch dial MCP altitude knob
[no action]
push LNAV switch dial speed knob set speed brakes
push LNAV switch push VNAV switch
dial heading knob push heading knob dial speed knob
dial heading knob push heading knob dial MCP altitude knob
dial heading knob push heading knob dial speed knob set speed brakes
dial heading knob push heading knob push VNAV switch
push LNAV switch dial MCP altitude knob dial speed knob
dial speed knob
dial MCP altitude knob
push LNAV switch dial MCP altitude knob dial speed knob set speed brakes
dial speed knob set speed brakes
push VNAV switch
push LNAV switch set speed brakes
push LNAV switch push speed knob dial speed knob set speed brakes
push LNAV switch dial speed knob
dial heading knob push heading knob dial MCP altitude knob dial speed knob
dial heading knob push heading knob dial MCP altitude knob dial speed knob set speed
brakes

```



dial heading knob push heading knob set speed brakes  
dial heading knob push heading knob push speed knob dial speed knob set speed brakes  
dial heading knob push heading knob dial speed knob  
dial MCP altitude knob dial speed knob  
dial MCP altitude knob dial speed knob set speed brakes  
push LNAV switch dial MCP altitude knob set speed brakes  
push LNAV switch dial MCP altitude knob push speed knob dial speed knob set speed  
brakes  
push LNAV switch dial MCP altitude knob dial speed knob  
set speed brakes  
push speed knob dial speed knob set speed brakes  
dial speed knob  
push LNAV switch push speed knob set speed brakes  
push LNAV switch push speed knob dial speed knob  
dial heading knob push heading knob dial MCP altitude knob set speed brakes  
dial heading knob push heading knob dial MCP altitude knob push speed knob dial speed  
knob set speed brakes  
dial heading knob push heading knob dial MCP altitude knob dial speed knob  
dial heading knob push heading knob push speed knob set speed brakes  
dial heading knob push heading knob push speed knob dial speed knob  
dial MCP altitude knob set speed brakes  
dial MCP altitude knob push speed knob dial speed knob set speed brakes  
dial MCP altitude knob dial speed knob  
push LNAV switch dial MCP altitude knob push speed knob set speed brakes  
push LNAV switch dial MCP altitude knob push speed knob dial speed knob  
push speed knob set speed brakes  
push speed knob dial speed knob  
push LNAV switch push speed knob  
dial heading knob push heading knob dial MCP altitude knob push speed knob set speed  
brakes  
dial heading knob push heading knob dial MCP altitude knob push speed knob dial speed  
knob  
dial heading knob push heading knob push speed knob  
dial MCP altitude knob push speed knob set speed brakes  
dial MCP altitude knob push speed knob dial speed knob  
push LNAV switch dial MCP altitude knob push speed knob  
push speed knob  
dial heading knob push heading knob dial MCP altitude knob push speed knob  
dial MCP altitude knob push speed knob  
=====> 7 single-element errors:  
[no action]  
dial speed knob  
dial MCP altitude knob  
push VNAV switch  
set speed brakes  
dial speed knob  
push speed knob

----- TRUE CONTEXT -----

start-of-run  
above-runway-elev  
above-1000-feet-AGL  
at-armed  
fd-on  
programmed-route-within-limits  
above-clean-speed  
flight-surfaces-within-limits  
gear-within-limits  
comm-freq-within-limits  
track-okay-for-now  
mcp-alt-within-limits  
current-alt-within-limits  
profile-okay-for-now  
alt-hold-in-progress  
alt-hold-engd

downpath-wpt-within-limits  
intcpt-leg-to-wpt-within-limits

----- TRUE PREDICTIONS -----

fly glass cockpit aircraft  
navigate with AP or FD guidance  
navigate laterally  
fly track  
fly using LNAV  
engage LNAV  
push LNAV switch  
navigate vertically  
fly profile  
fly using VNAV  
engage VNAV

----- TRUE PREDICTIONS (ACTIONS ONLY) -----

push LNAV switch

```

===== Error data at time 54586.91 =====
Predicting erroneous activities...
----- Vis a Vis Predicted Subtasks/Actions -----
Present, but need not be:
1: track-okay-for-now
2: profile-okay-for-now
Not present, but could be:
1: lnav-engd
2: mcp-alt-within-limits
3: vnav-engd
   [31 erroneous context specifier combinations]
Of 17 potentially erroneous predictions, 17 involve actions, and 0 do not

```

```

==> 17 possible errors (correct actions removed):
dial heading knob push heading knob dial MCP altitude knob
push LNAV switch dial MCP altitude knob push ALT HOLD switch
dial MCP altitude knob
push LNAV switch push VNAV switch
push LNAV switch dial MCP altitude knob dial speed knob set speed brakes
dial heading knob push heading knob dial MCP altitude knob push ALT HOLD switch
dial heading knob push heading knob push VNAV switch
dial heading knob push heading knob dial MCP altitude knob dial speed knob set speed
brakes
dial MCP altitude knob push ALT HOLD switch
push LNAV switch push ALT HOLD switch
push VNAV switch
dial MCP altitude knob dial speed knob set speed brakes
push LNAV switch dial speed knob set speed brakes
dial heading knob push heading knob push ALT HOLD switch
dial heading knob push heading knob dial speed knob set speed brakes
push ALT HOLD switch
dial speed knob set speed brakes
=====> 3 single-element errors:
dial MCP altitude knob
push VNAV switch
push ALT HOLD switch

```

```

----- With All Subtasks/Actions In Play -----
Present, but need not be:
1: track-okay-for-now
2: profile-okay-for-now
3: not-capturing-rqd-alt
Not present, but could be:
1: lnav-engd
2: mcp-alt-within-limits
3: vnav-engd
4: fms-target-speed-within-limits
5: speed-window-blank
6: target-speed-within-limits
7: drag-within-limits
   [1023 erroneous context specifier combinations]
Of 75 potentially erroneous predictions, 72 involve actions, and 3 do not

```

```

==> 56 possible errors (correct actions removed):
dial heading knob push heading knob dial MCP altitude knob
push LNAV switch dial MCP altitude knob push ALT HOLD switch
dial MCP altitude knob
push LNAV switch push VNAV switch
push LNAV switch dial MCP altitude knob dial speed knob set speed brakes
dial heading knob push heading knob dial MCP altitude knob push ALT HOLD switch
dial heading knob push heading knob push VNAV switch
dial heading knob push heading knob dial MCP altitude knob dial speed knob set speed
brakes
dial MCP altitude knob push ALT HOLD switch

```

```

push LNAV switch push ALT HOLD switch
push LNAV switch
push VNAV switch
dial MCP altitude knob dial speed knob set speed brakes
push LNAV switch dial speed knob set speed brakes
push LNAV switch dial MCP altitude knob set speed brakes
push LNAV switch dial MCP altitude knob push speed knob dial speed knob set speed
brakes
push LNAV switch dial MCP altitude knob dial speed knob
dial heading knob push heading knob push ALT HOLD switch
dial heading knob push heading knob
dial heading knob push heading knob dial speed knob set speed brakes
dial heading knob push heading knob dial MCP altitude knob set speed brakes
dial heading knob push heading knob dial MCP altitude knob push speed knob dial speed
knob set speed brakes
dial heading knob push heading knob dial MCP altitude knob dial speed knob
push ALT HOLD switch
[no action]
dial speed knob set speed brakes
dial MCP altitude knob set speed brakes
dial MCP altitude knob push speed knob dial speed knob set speed brakes
dial MCP altitude knob dial speed knob
push LNAV switch set speed brakes
push LNAV switch push speed knob dial speed knob set speed brakes
push LNAV switch dial speed knob
push LNAV switch dial MCP altitude knob push speed knob set speed brakes
push LNAV switch dial MCP altitude knob push speed knob dial speed knob
dial heading knob push heading knob set speed brakes
dial heading knob push heading knob push speed knob dial speed knob set speed brakes
dial heading knob push heading knob dial speed knob
dial heading knob push heading knob dial MCP altitude knob push speed knob set speed
brakes
dial heading knob push heading knob dial MCP altitude knob push speed knob dial speed
knob
set speed brakes
push speed knob dial speed knob set speed brakes
dial speed knob
dial MCP altitude knob push speed knob set speed brakes
dial MCP altitude knob push speed knob dial speed knob
push LNAV switch push speed knob set speed brakes
push LNAV switch push speed knob dial speed knob
push LNAV switch dial MCP altitude knob push speed knob
dial heading knob push heading knob push speed knob set speed brakes
dial heading knob push heading knob push speed knob dial speed knob
dial heading knob push heading knob dial MCP altitude knob push speed knob
push speed knob set speed brakes
push speed knob dial speed knob
dial MCP altitude knob push speed knob
push LNAV switch push speed knob
dial heading knob push heading knob push speed knob
push speed knob
=====> 8 single-element errors:
dial MCP altitude knob
push LNAV switch
push VNAV switch
push ALT HOLD switch
[no action]
set speed brakes
dial speed knob
push speed knob
----- TRUE CONTEXT -----
start-of-run
above-runway-elev
above-1000-feet-AGL

```

at-armed  
fd-on  
programmed-route-within-limits  
above-clean-speed  
flight-surfaces-within-limits  
gear-within-limits  
comm-freq-within-limits  
track-okay-for-now  
not-capturing-rqd-alt  
current-alt-within-limits  
profile-okay-for-now  
downpath-wpt-within-limits  
intcpt-leg-to-wpt-within-limits

----- TRUE PREDICTIONS -----

fly glass cockpit aircraft  
navigate with AP or FD guidance  
navigate laterally  
fly track  
fly using LNAV  
engage LNAV  
push LNAV switch  
navigate vertically  
set target altitude  
dial MCP altitude knob  
fly profile  
fly using VNAV  
engage VNAV

----- TRUE PREDICTIONS (ACTIONS ONLY) -----

push LNAV switch  
dial MCP altitude knob

Report Documentation Page		Form Approved OMB No. 0704-0188	
Public reporting burden for this collection of information is estimated to average 1 hour per response, including the time for reviewing instructions, searching existing data sources, gathering and maintaining the data needed, and completing and reviewing the collection of information. Send comments regarding this burden estimate or any other aspect of this collection of information, including suggestions for reducing this burden, to Washington Headquarters Services, Directorate for Information Operations and Reports, 1215 Jefferson Davis Highway, Suite 1204, Arlington, VA 22202-4302, and to the Office of Management and Budget, Paperwork Reduction Project (0704-0188), Washington, DC 20503.			
1. AGENCY USE ONLY (Leave blank)	2. REPORT DATE May 2003	3. REPORT TYPE AND DATES COVERED Contractor Report	
4. TITLE AND SUBTITLE Error Generation in CATS-Based Agents		5. FUNDING NUMBERS 728-20-10	
6. AUTHOR(S) Todd Callantine			
7. PERFORMING ORGANIZATION NAME(S) AND ADDRESS(ES) San Jose State University San Jose, California		8. PERFORMING ORGANIZATION REPORT NUMBER IH-039	
9. SPONSORING/MONITORING AGENCY NAME(S) AND ADDRESS(ES) National Aeronautics and Space Administration		10. SPONSORING/MONITORING AGENCY REPORT NUMBER NASA/CR—2003–212263	
11. SUPPLEMENTARY NOTES Point of Contact: Everett Palmer, M/S 262-4, Ames Research Center, Moffett Field, CA 94035 (650) 604-6073			
12A. DISTRIBUTION/AVAILABILITY STATEMENT Subject Category: 03-01, 63-02                      Distribution: Public Availability: NASA CASI (301) 621-0390		12B. DISTRIBUTION CODE	
13. ABSTRACT (Maximum 200 words)  This research presents a methodology for generating errors from a model of nominally preferred correct operator activities, given a particular operational context, and maintaining an explicit link to the erroneous contextual information to support analyses. It uses the Crew Activity Tracking System (CATS) model as the basis for error generation. This report describes how the process works, and how it may be useful for supporting agent-based system safety analyses. The report presents results obtained by applying the error-generation process and discusses implementation issues. The research is supported by the System-Wide Accident Prevention Element of the NASA Aviation Safety Program.			
14. SUBJECT TERMS Agents, Air traffic control, Models		15. NUMBER OF PAGES 54	
		16. PRICE CODE	
17. SECURITY CLASSIFICATION OF REPORT Unclassified	18. SECURITY CLASSIFICATION OF THIS PAGE Unclassified	19. SECURITY CLASSIFICATION OF ABSTRACT Unclassified	20. LIMITATION OF ABSTRACT Unlimited