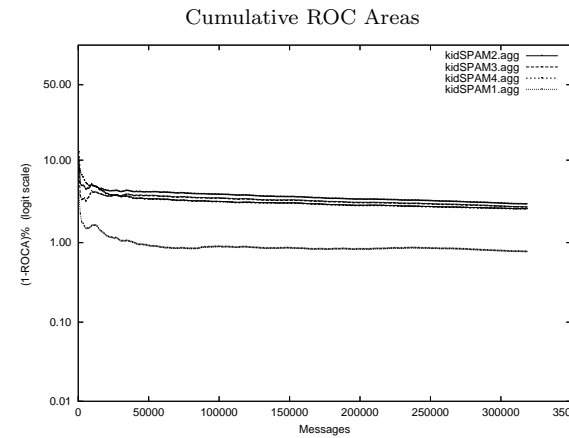
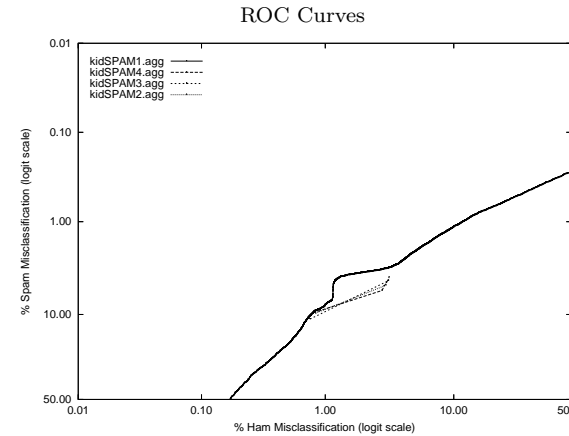


kid - Beijing U. of Posts and Telecom. on Aggregate of full, mrx, sb, tm Corpus

Gold Std. Filter Classification	kidSPAM1.agg		kidSPAM2.agg		kidSPAM3.agg		kidSPAM4.agg	
	ham spam	ham spam	ham spam	ham spam	ham spam	ham spam	ham spam	ham spam
Ham Misc%	0.93 (0.89-0.97)		0.84 (0.80-0.88)		0.75 (0.72-0.79)		2.94 (2.87-3.02)	
Spam Misc%	8.60 (8.44-8.77)		9.71 (9.53-9.88)		11.11 (10.93-11.29)		5.05 (4.92-5.18)	
Logit av Misc%	2.88 (2.82-2.96)		2.92 (2.85-2.99)		2.99 (2.91-3.07)		3.86 (3.79-3.93)	
(1-ROCA)%	0.768 (0.737 - 0.799)		3.003 (2.921 - 3.088)		2.741 (2.672 - 2.812)		2.606 (2.537 - 2.676)	
Ham Misc%	Spam Misc%							
0.01	96.34 (91.97 - 98.38)		99.01 (98.41 - 99.38)		98.84 (98.21 - 99.25)		99.01 (98.44 - 99.37)	
0.02	89.97 (87.99 - 91.65)		97.68 (96.83 - 98.31)		97.78 (97.00 - 98.37)		97.68 (96.94 - 98.24)	
0.05	79.32 (76.11 - 82.20)		94.65 (93.51 - 95.60)		94.51 (93.24 - 95.56)		95.01 (93.91 - 95.92)	
0.10	66.13 (62.20 - 69.86)		88.29 (86.64 - 89.77)		88.23 (86.48 - 89.78)		89.15 (87.54 - 90.57)	
0.20	43.59 (40.16 - 47.09)		77.60 (75.22 - 79.81)		75.86 (73.62 - 77.97)		78.31 (76.07 - 80.40)	
0.50	19.46 (18.16 - 20.84)		47.03 (43.60 - 50.49)		43.18 (39.52 - 46.92)		48.74 (45.63 - 51.86)	
1.00	7.96 (7.46 - 8.49)		9.36 (9.17 - 9.55)		10.44 (10.22 - 10.67)		9.03 (8.85 - 9.21)	
2.00	3.62 (3.51 - 3.73)		7.19 (7.00 - 7.39)		7.69 (7.47 - 7.91)		7.20 (7.02 - 7.39)	
5.00	2.18 (2.09 - 2.26)		4.84 (4.72 - 4.97)		4.34 (4.22 - 4.47)		3.99 (3.87 - 4.11)	
10.00	1.14 (1.08 - 1.21)		4.58 (4.46 - 4.71)		4.09 (3.97 - 4.21)		3.78 (3.67 - 3.90)	
20.00	0.66 (0.61 - 0.70)		4.08 (3.95 - 4.20)		3.64 (3.53 - 3.75)		3.36 (3.25 - 3.46)	
50.00	0.28 (0.25 - 0.31)		2.51 (2.42 - 2.61)		2.28 (2.19 - 2.37)		2.08 (2.01 - 2.17)	
Spam Misc%	Ham Misc%							
0.01	96.79 (95.28 - 97.83)		99.84 (99.70 - 99.91)		99.68 (99.40 - 99.83)		99.83 (99.69 - 99.91)	
0.02	95.18 (93.26 - 96.57)		99.60 (99.37 - 99.74)		99.37 (99.04 - 99.59)		99.55 (99.34 - 99.69)	
0.05	90.70 (87.92 - 92.89)		99.14 (98.86 - 99.35)		98.77 (98.40 - 99.05)		98.94 (98.63 - 99.17)	
0.10	79.98 (75.58 - 83.76)		98.17 (97.80 - 98.48)		97.83 (97.40 - 98.19)		97.81 (97.41 - 98.15)	
0.20	62.98 (59.23 - 66.57)		96.14 (95.55 - 96.65)		95.62 (95.06 - 96.13)		95.57 (94.99 - 96.08)	
0.50	28.16 (25.57 - 30.90)		89.95 (89.04 - 90.78)		88.91 (87.97 - 89.78)		87.89 (86.92 - 88.80)	
1.00	11.66 (11.02 - 12.32)		80.28 (78.97 - 81.53)		77.81 (76.58 - 78.98)		76.26 (74.89 - 77.58)	
2.00	5.48 (5.24 - 5.72)		59.99 (58.28 - 61.69)		56.05 (54.25 - 57.84)		51.91 (50.09 - 53.72)	
5.00	1.16 (1.11 - 1.21)		3.02 (2.39 - 3.82)		2.98 (2.90 - 3.07)		2.96 (2.88 - 3.04)	
10.00	0.77 (0.73 - 0.82)		0.83 (0.80 - 0.87)		1.17 (1.08 - 1.25)		0.86 (0.82 - 0.90)	
20.00	0.49 (0.46 - 0.52)		0.73 (0.70 - 0.77)		0.68 (0.64 - 0.71)		0.76 (0.73 - 0.80)	
50.00	0.17 (0.15 - 0.19)		0.47 (0.44 - 0.50)		0.44 (0.41 - 0.47)		0.49 (0.46 - 0.52)	



Learning Curves

