

MESQUITE, TEXAS

AL-6444 (FAA)

WAAS Ch 58301 W17A	APP CRS 175°	Rwy Idg 5999 TDZE 447 Apt Elev 447
--	------------------------	---

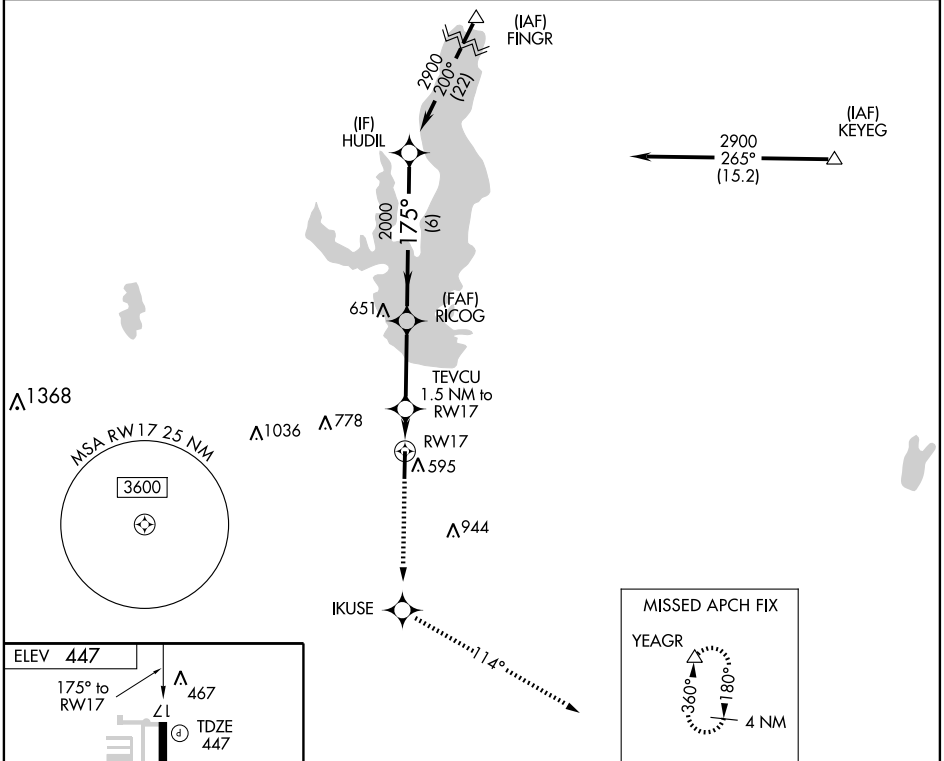
RNAV (GPS) RWY 17

MESQUITE METRO (HQZ)

▼ DME/DME RNP-0.3 NA. Visibility reduction by helicopters NA.
▲ When local altimeter setting not received, use Dallas Love Field altimeter setting and increase all DA/MDA 60 feet. Increase LPV visibility 1/4 mile, all Cats.

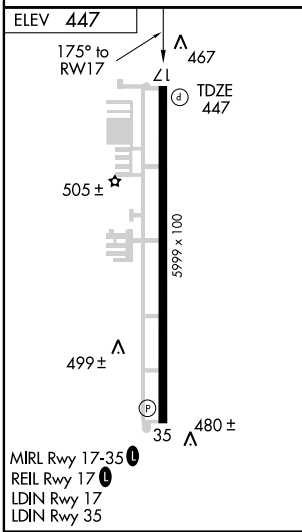
MISSED APPROACH: Climb to 3000 direct IKUSE and via 114° track to YEAGR and hold.

AWOS-3 118.175	REGIONAL APP CON 125.2 343.65	UNICOM 123.05 (CTAF) ①
--------------------------	---	----------------------------------



SC-2, 25 SEP 2008 to 23 OCT 2008

SC-2, 25 SEP 2008 to 23 OCT 2008



3000	IKUSE	TRK 114°	YEAGR	HUDIL
*LNAV only				
RW17		TEVCU 1.5 NM to RW17	RICOG	2900
*980		175°		Procedure Turn NA
1.5 NM		3.1 NM		GS 3.00° TCH 56
CATEGORY	A	B	C	D
LPV DA	697-3/4		250 (300-3/4)	NA
LNAV MDA	860-1	413 (500-1)	860-1 1/4	413 (500-1 1/4)
CIRCLING	960-1	513 (600-1)	960-1 1/2	513 (600-1 1/2)

MESQUITE, TEXAS
Amdt 1 08269

32°45'N-96°32'W

RNAV (GPS) RWY 17

MESQUITE METRO (HQZ)