

MESQUITE, TEXAS

AL-6444 (FAA)

RNAV (GPS) RWY 35

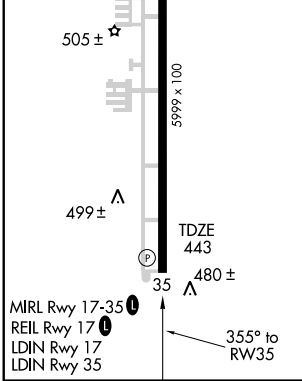
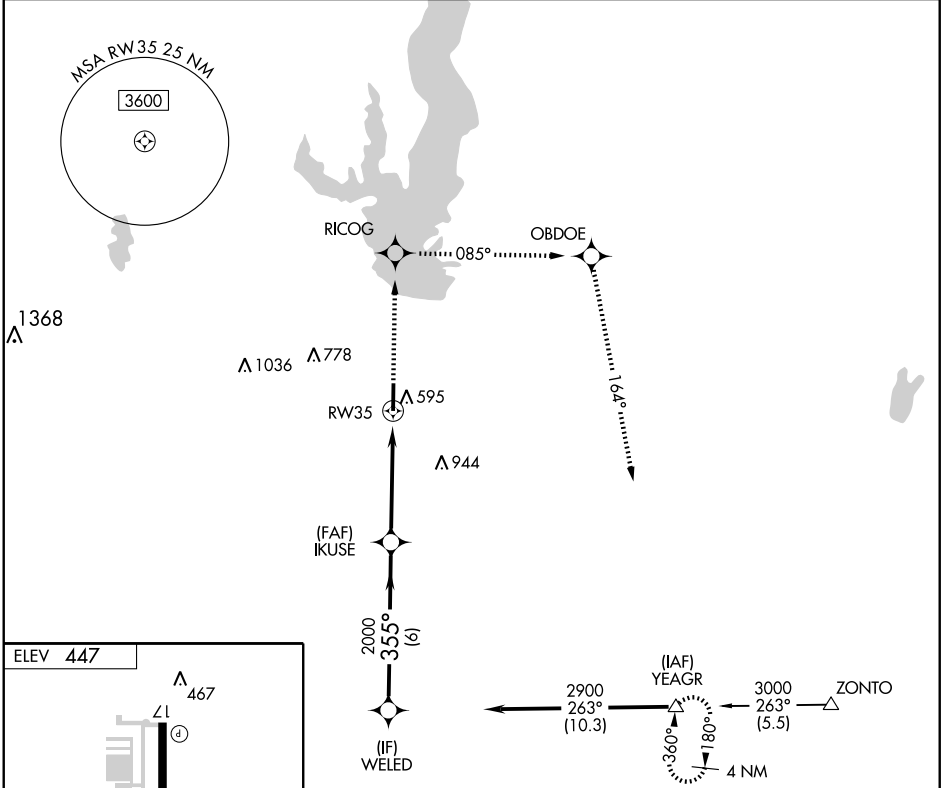
MESQUITE METRO (HQZ)

WAAS Ch 78401 W35A	APP CRS 355°	Rwy Idg 5999 TDZE 443 Apt Elev 447
--	------------------------	---

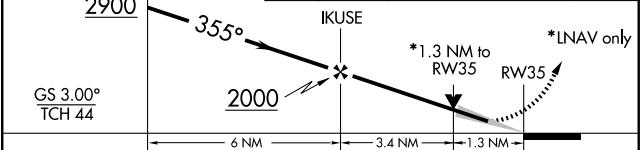
⚠ DME/DME RNP-0.3 NA. VDP NA when using Dallas Love Field altimeter setting. When local altimeter setting not received, use Dallas Love Field altimeter setting and increase all DA/MDA 60 feet. Increase LPV visibility 1/4 mile all Cats, increase LNAV Cat C visibility 1/4 mile.

MISSED APPROACH: Climb to 3000 direct RICOG and via 085° track to OBDOE and via 164° track to YEAGR and hold.

AWOS-3 118.175	REGIONAL APP CON 125.2 343.65	UNICOM 123.05 (CTAF) ①
--------------------------	---	----------------------------------



Procedure Turn NA	3000 ↑	RICOG	TRK 085°	OBDOE	TRK 164°	YEAGR
-------------------	--------	-------	----------	-------	----------	-------



CATEGORY	A	B	C	D
LPV DA	693-3/4		250 (300-3/4)	NA
LNAV MDA	900-1	457 (500-1)	900-1 1/4 457 (500-1 1/4)	NA
CIRCLING	960-1	513 (600-1)	960-1 1/2 513 (600-1 1/2)	NA

MESQUITE, TEXAS
Amdt 1 08269

32°45'N-96°32'W

RNAV (GPS) RWY 35

SC-2, 25 SEP 2008 to 23 OCT 2008

SC-2, 25 SEP 2008 to 23 OCT 2008