

# **PM Health Effects: Biological Plausibility and Mechanisms**

**Robert Devlin**

**Human Studies Division  
Office of Research and Development**

**PM Center Directors' Meeting**

**Washington DC**

**Sept. 27-28**

# State of the Science in 1998

---

- More than 30 epidemiology studies from around the world report associations between ambient PM and cardiac mortality and morbidity.

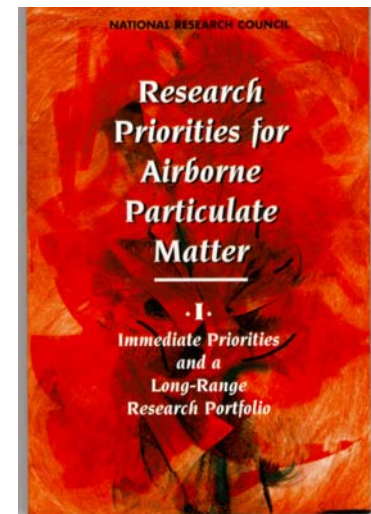
- PM levels are very low compared with other particle exposures.

**One cigarette = 10x more than a typical 24 hr exposure to PM**

- No widely accepted pathophysiological process or mechanism that could explain how a person could die following an acute exposure to such low levels of air pollution particles.

# The First NRC Report

**What are the underlying mechanisms (pulmonary, vascular, cardiac) that can explain the epidemiological findings of mortality and morbidity associated with exposure to ambient particulate matter?**

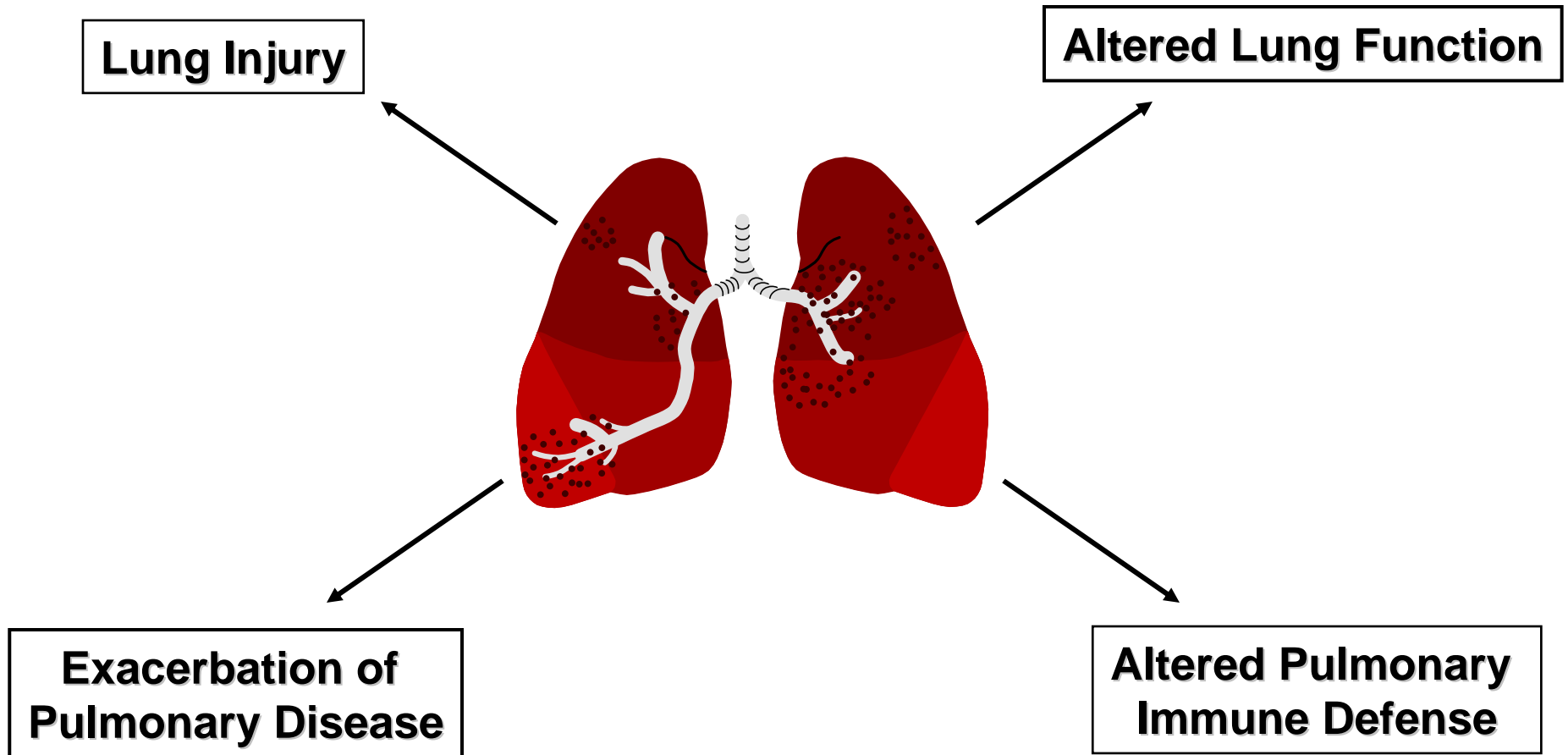


# PM Presented A New Challenge to Air Pollution Toxicologists

---

- Traditionally, toxicologists have focused on respiratory tract responses to air pollutants  
ozone, NO<sub>2</sub>, SO<sub>2</sub>
- The association between PM and cardiovascular effects required a new approach to the study of air pollution  
cardiac effects (e.g. arrhythmias)  
vascular effects (e.g. blood clot formation)

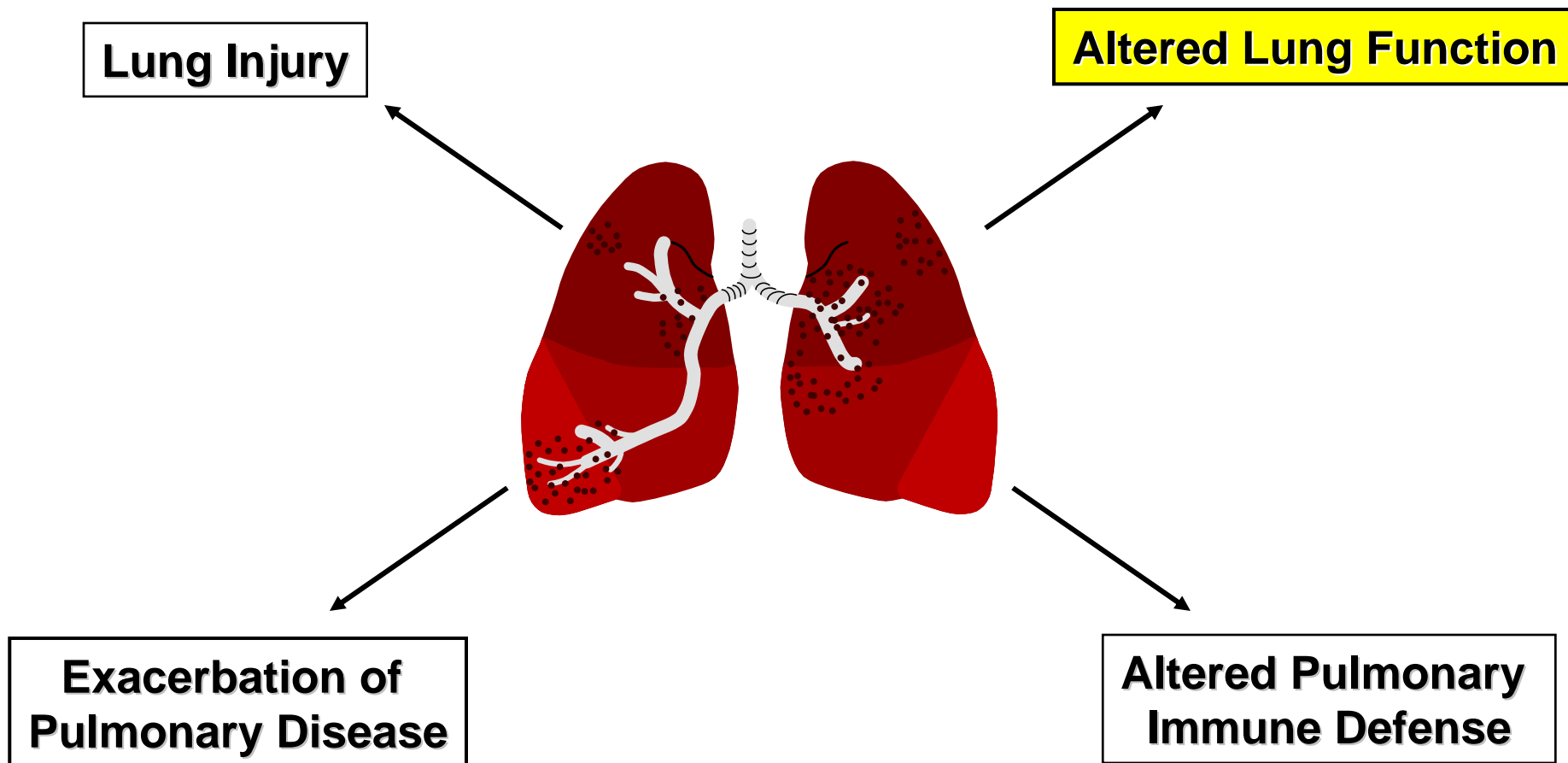
# Potential Effects of PM on the Pulmonary System



RESEARCH & DEVELOPMENT

*Building a scientific foundation for sound environmental decisions*

# Potential Effects of PM on the Pulmonary System

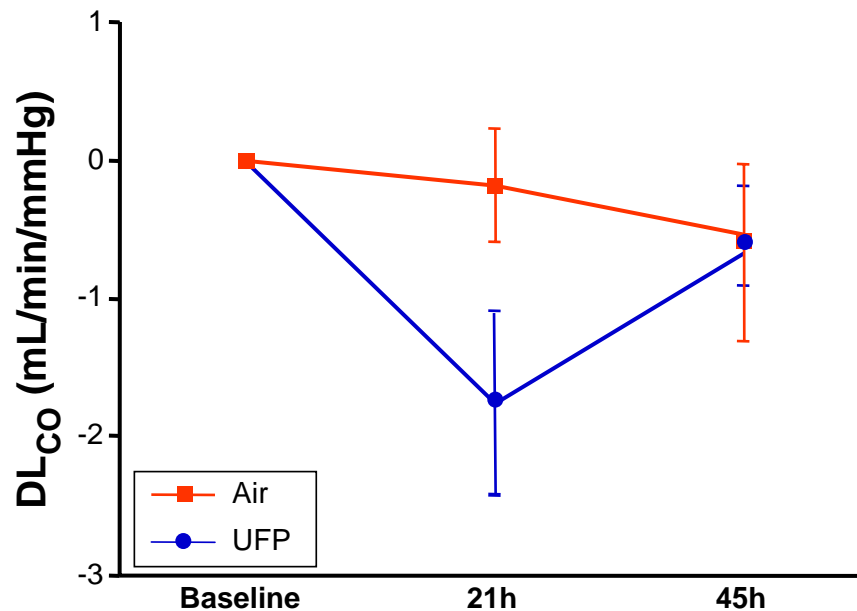


RESEARCH & DEVELOPMENT

*Building a scientific foundation for sound environmental decisions*

# PM Causes Changes in Lung Function

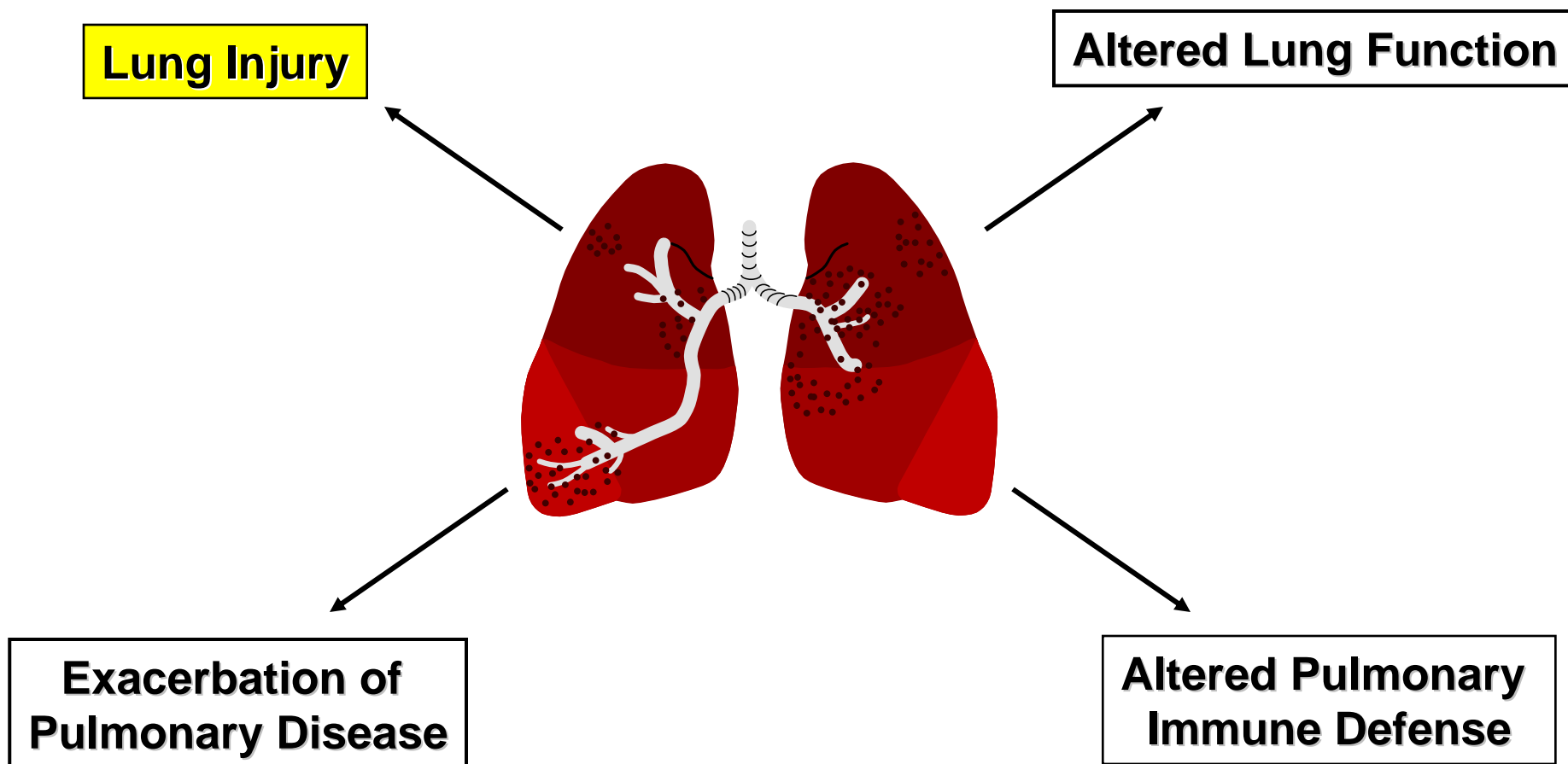
Humans exposed to ultrafine particles have decreased diffusing capacity.



Diffusing capacity is a measure of oxygen transfer from the lungs to the blood

Pietropaoli, et al., 2004

# Potential Effects of PM on the Pulmonary System



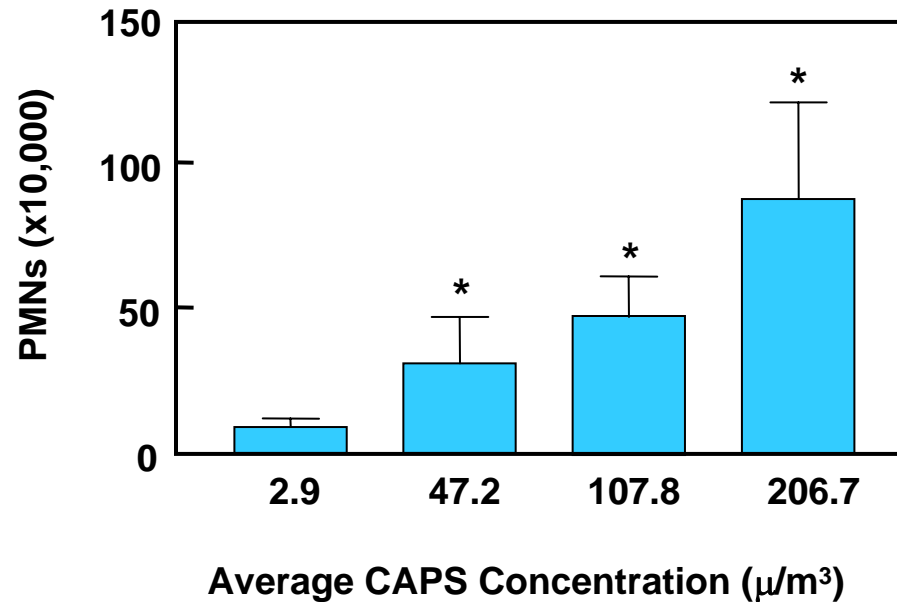
RESEARCH & DEVELOPMENT

*Building a scientific foundation for sound environmental decisions*



# PM Causes Lung Inflammation

Healthy young volunteers exposed to concentrated ambient air particles (CAPs) experience mild pulmonary inflammation

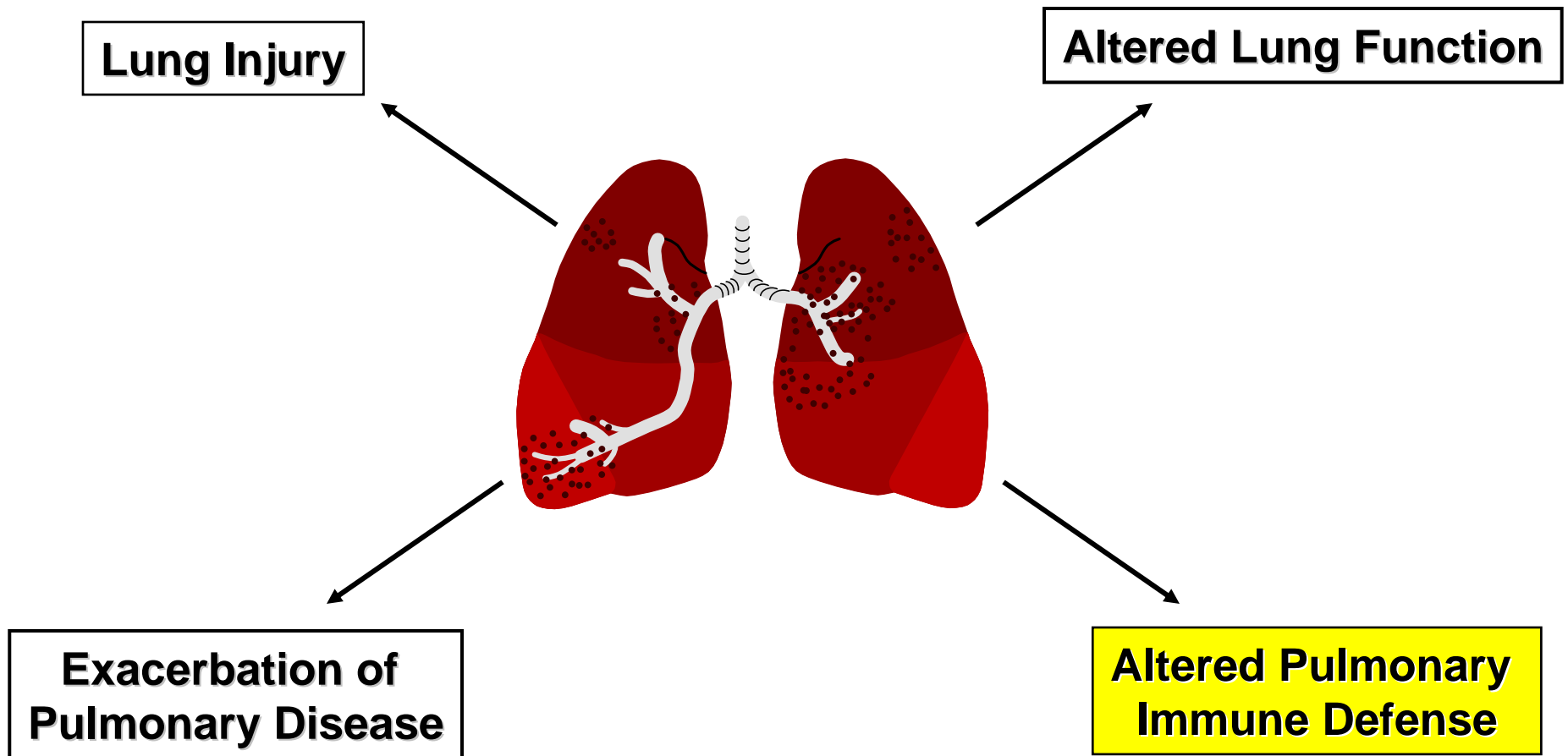


Ghio et al., 2001

RESEARCH & DEVELOPMENT

*Building a scientific foundation for sound environmental decisions*

# Potential Effects of PM on the Pulmonary System



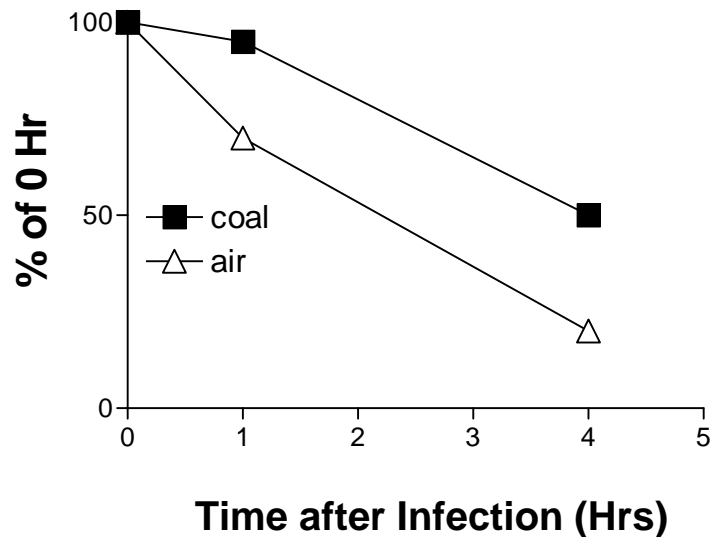
RESEARCH & DEVELOPMENT

*Building a scientific foundation for sound environmental decisions*

# PM Depresses Clearance and Inactivation of Bacteria

Epidemiology studies report associations between PM and increased incidence of hospitalization for respiratory infections.

## Inactivation

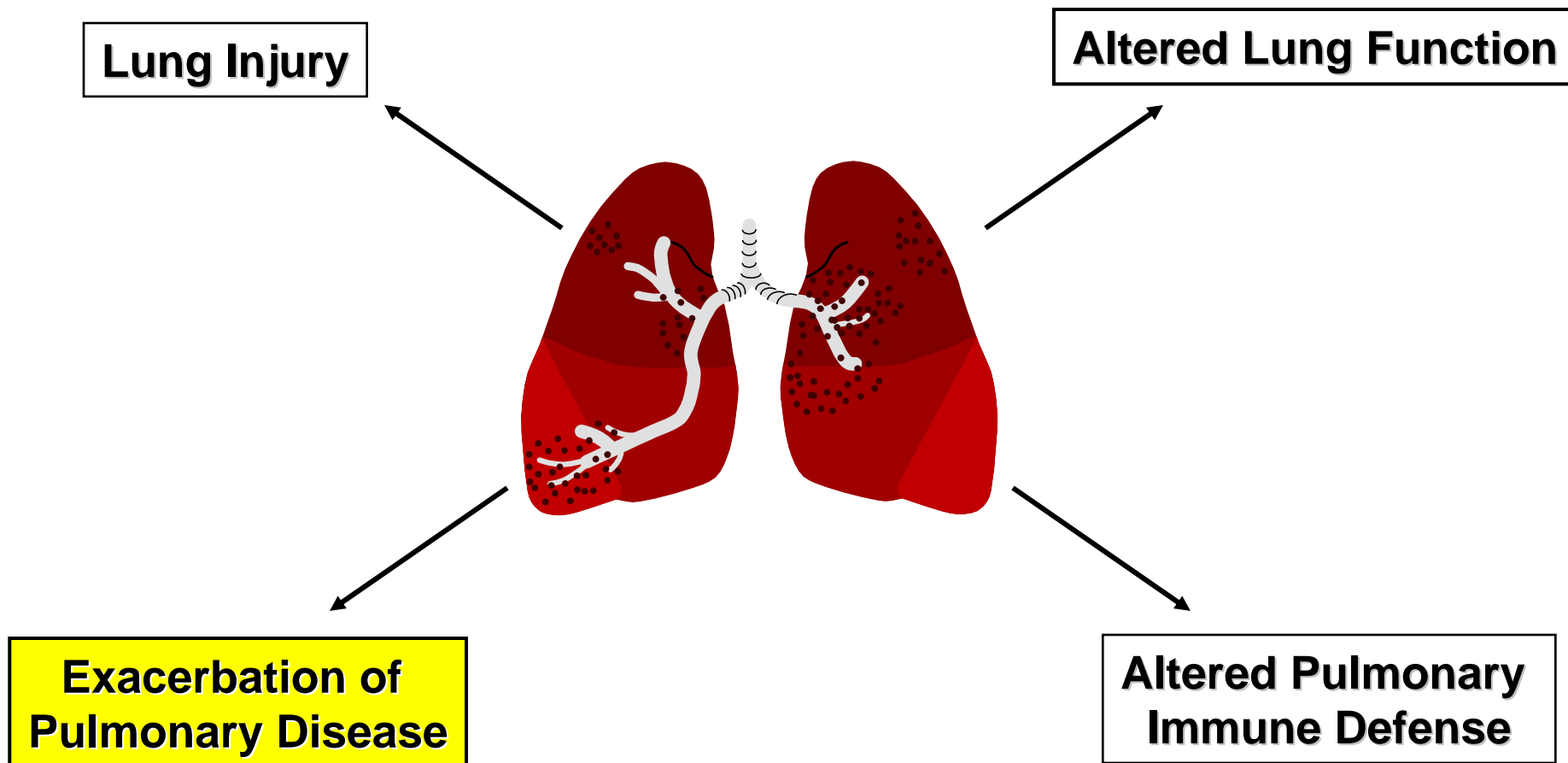


## Host Resistance Model

	Control	Woodstove
% Mortality (Streptococcus)	0	21

Gilmour et al., 2002

# Potential Effects of PM on the Pulmonary System

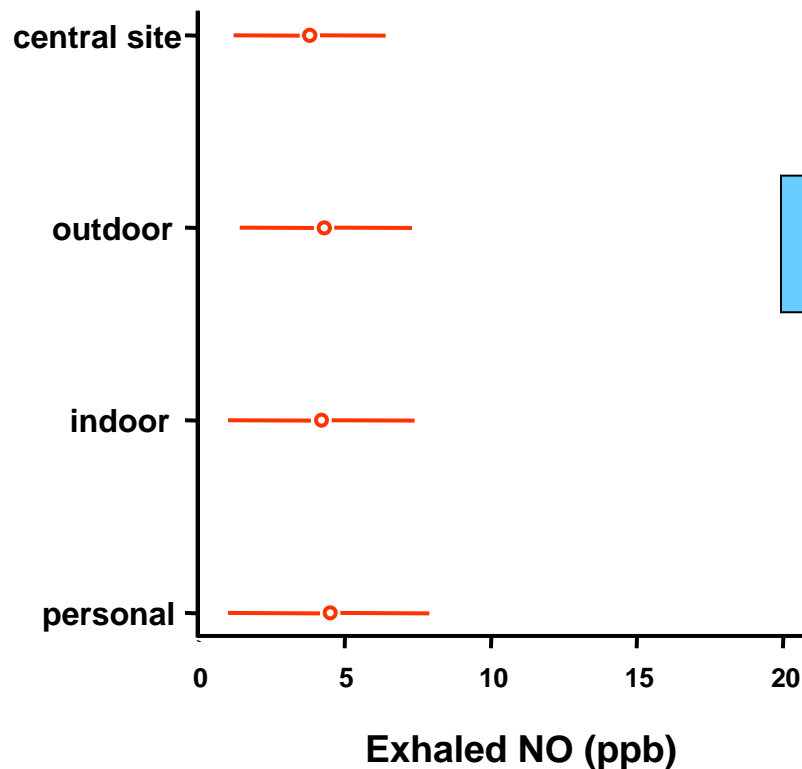


RESEARCH & DEVELOPMENT

*Building a scientific foundation for sound environmental decisions*

# PM Exposure Exacerbates Asthma

Change in exhaled nitric oxide per 10  $\mu\text{g}/\text{m}^3$  increase in  $\text{PM}_{2.5}$  in children with asthma



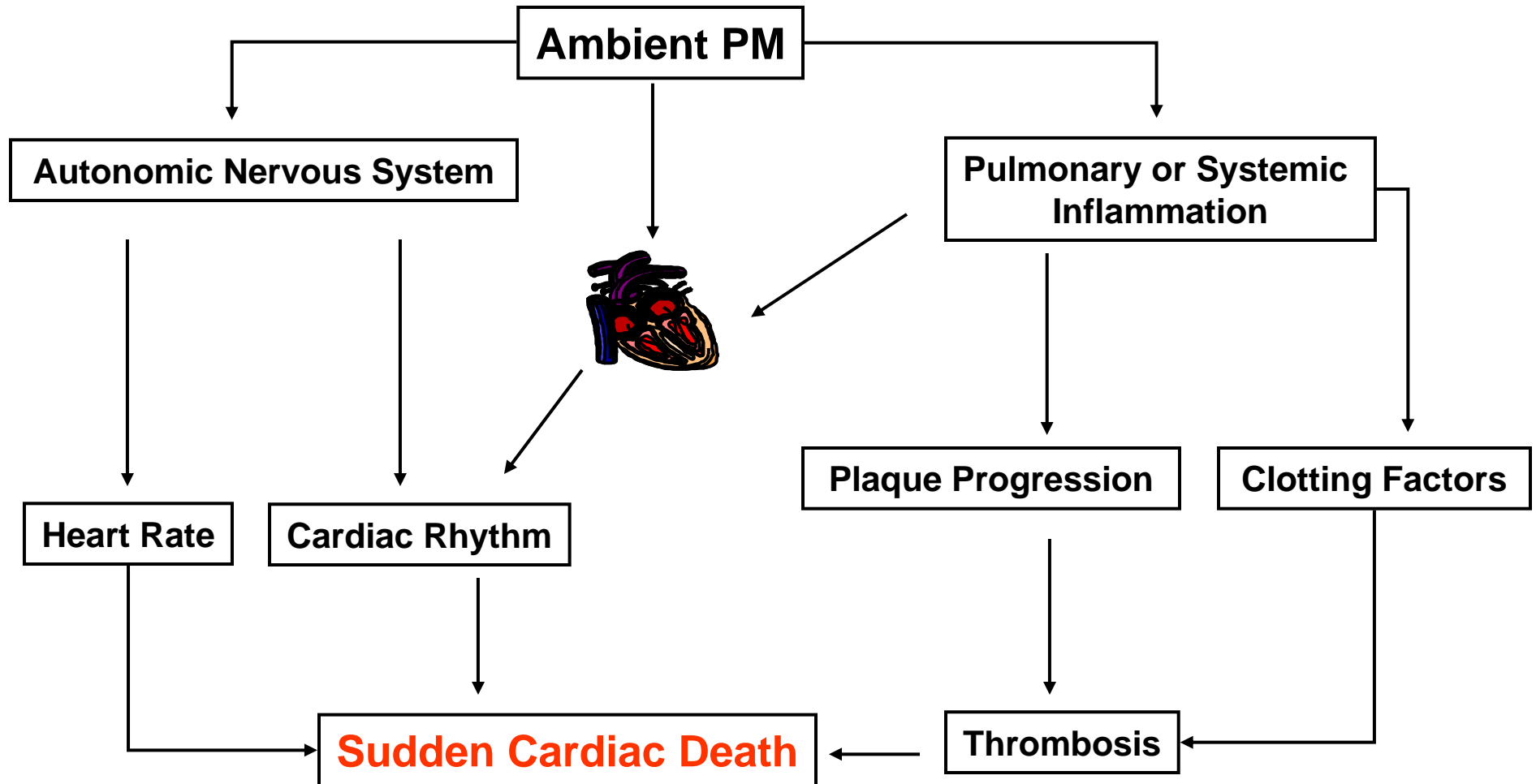
NO is an indication of pulmonary inflammation

Koenig et al., 2003

RESEARCH & DEVELOPMENT

*Building a scientific foundation for sound environmental decisions*

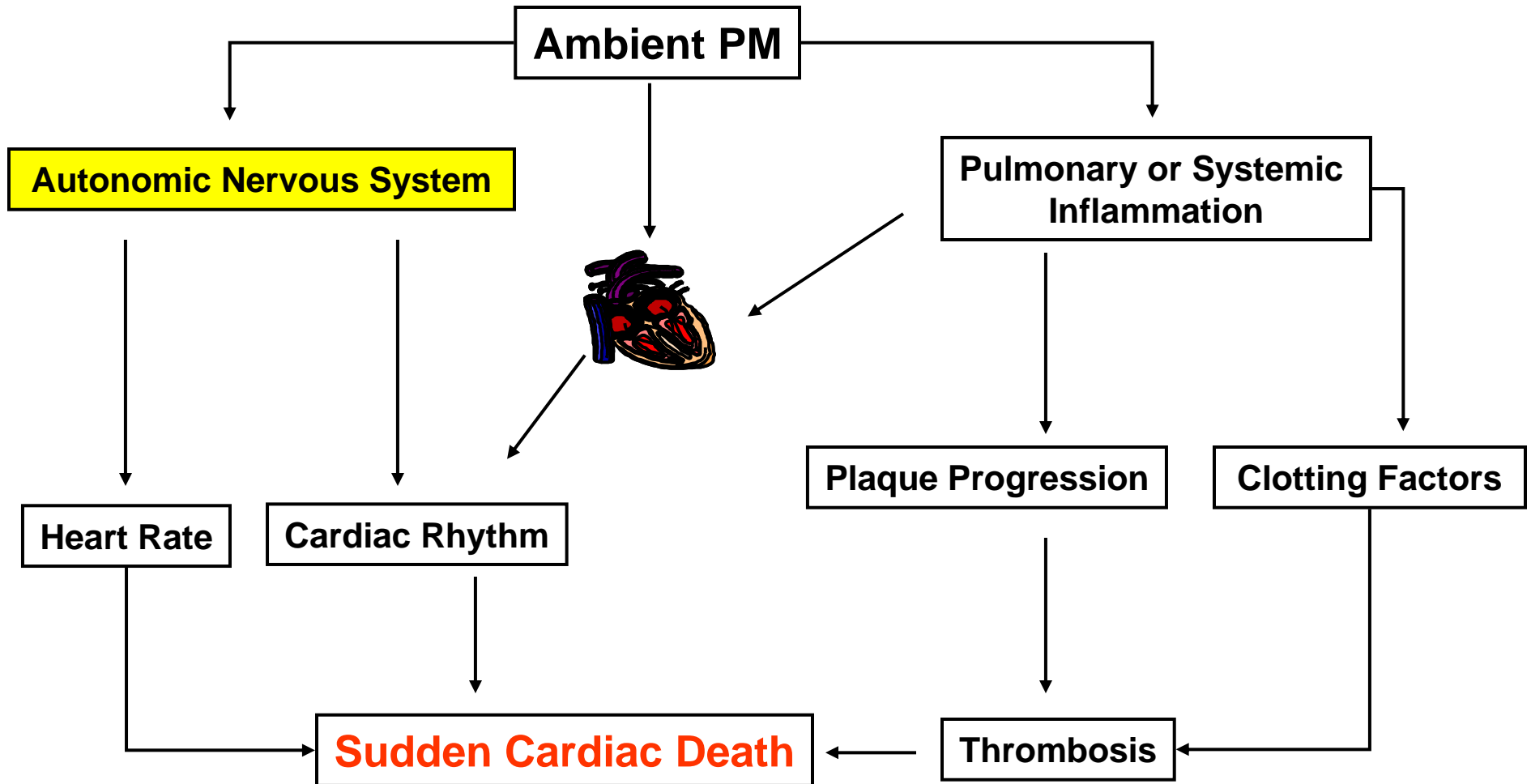
# Potential Effects of PM on the Cardiovascular System



RESEARCH & DEVELOPMENT

*Building a scientific foundation for sound environmental decisions*

# Potential Effects of PM on the Cardiovascular System

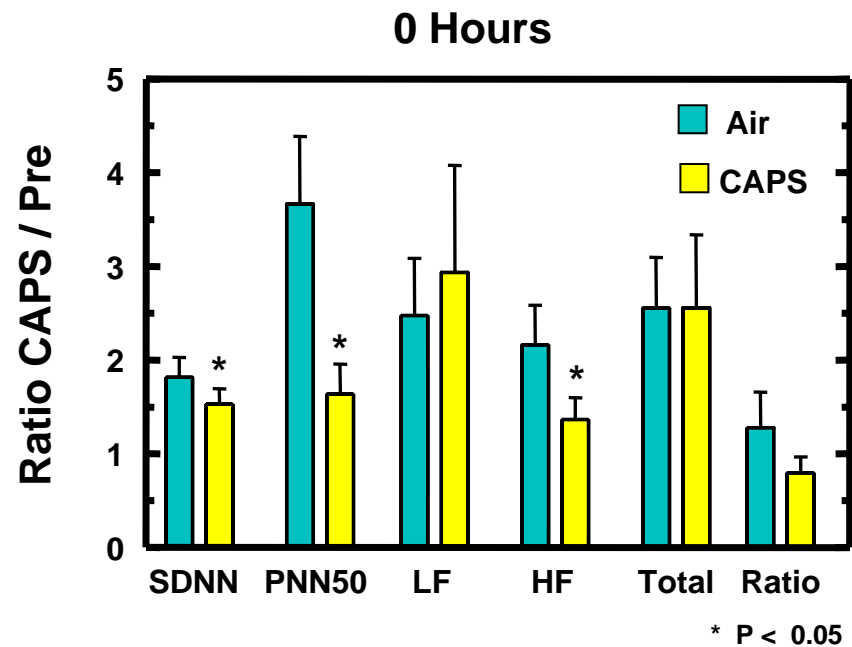


RESEARCH & DEVELOPMENT

*Building a scientific foundation for sound environmental decisions*

# PM Affects Autonomic Nervous System Control of the Heart

Elderly humans exposed to fine CAPS experience decreases in heart rate variability (HRV).

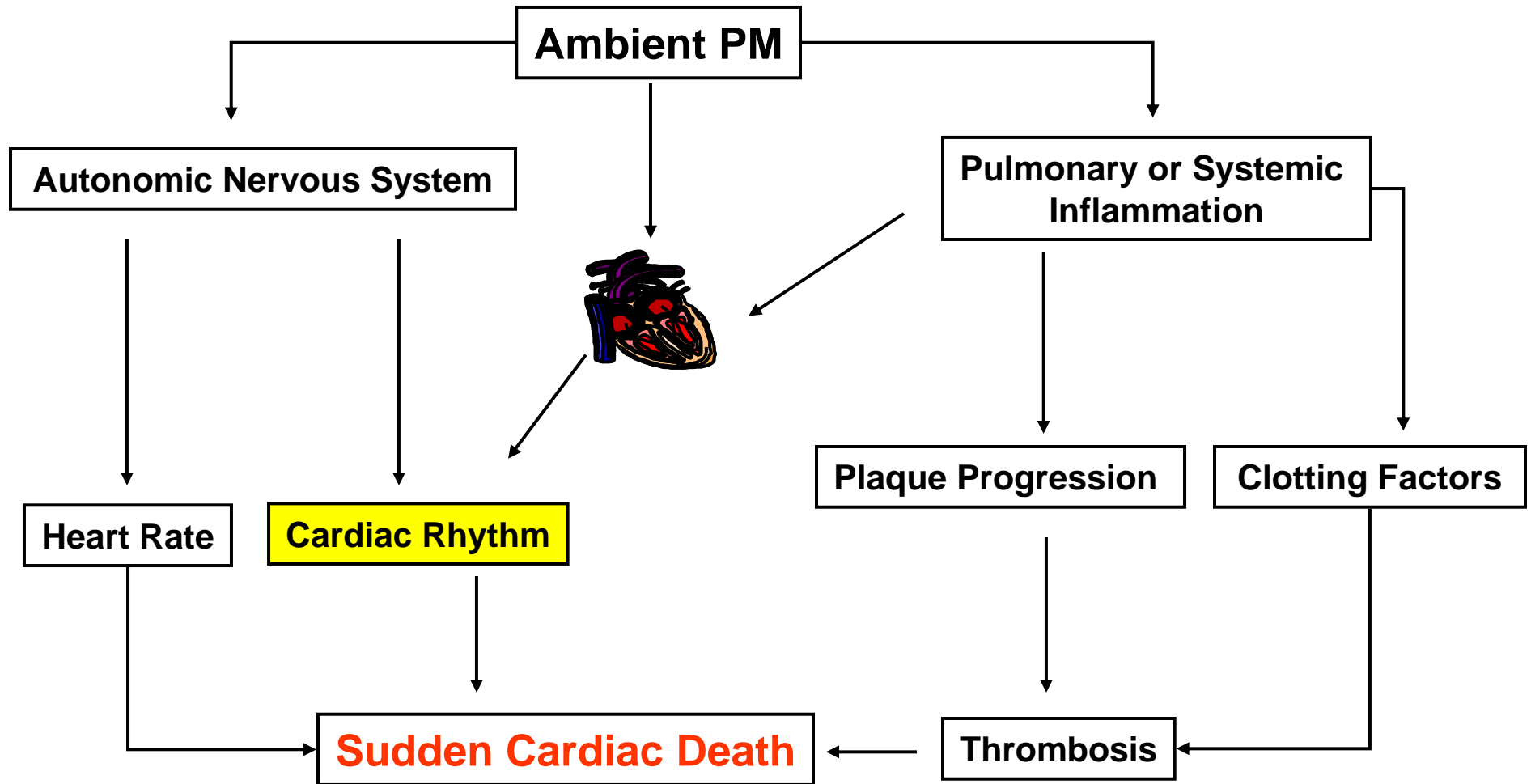


People with cardiovascular disease who have decreased HRV have a higher risk of getting a heart attack.

Devlin et al, 2003



# Potential Effects of PM on the Cardiovascular System



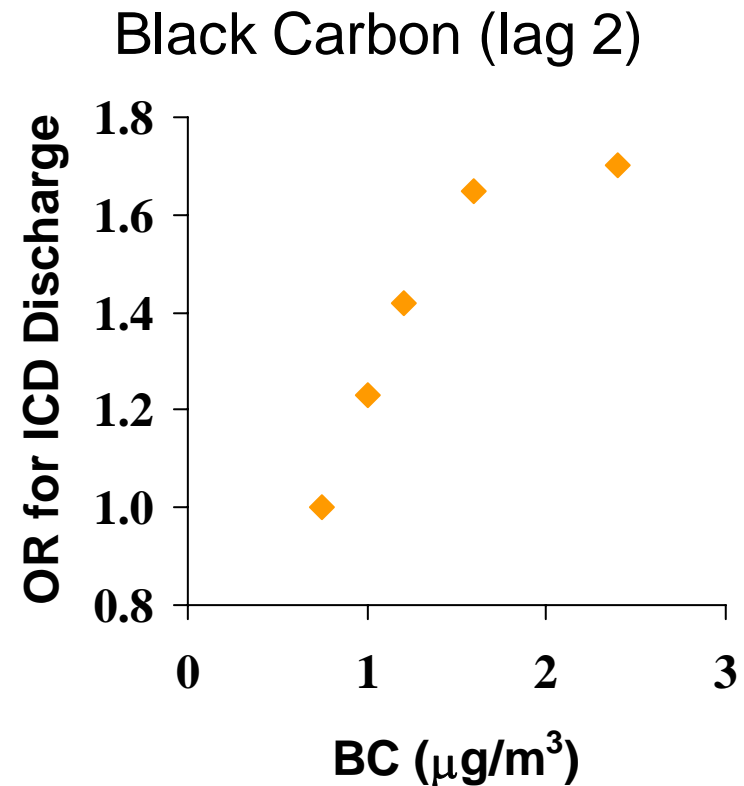
RESEARCH & DEVELOPMENT

*Building a scientific foundation for sound environmental decisions*

# PM Triggers Cardiac Arrhythmias in Humans

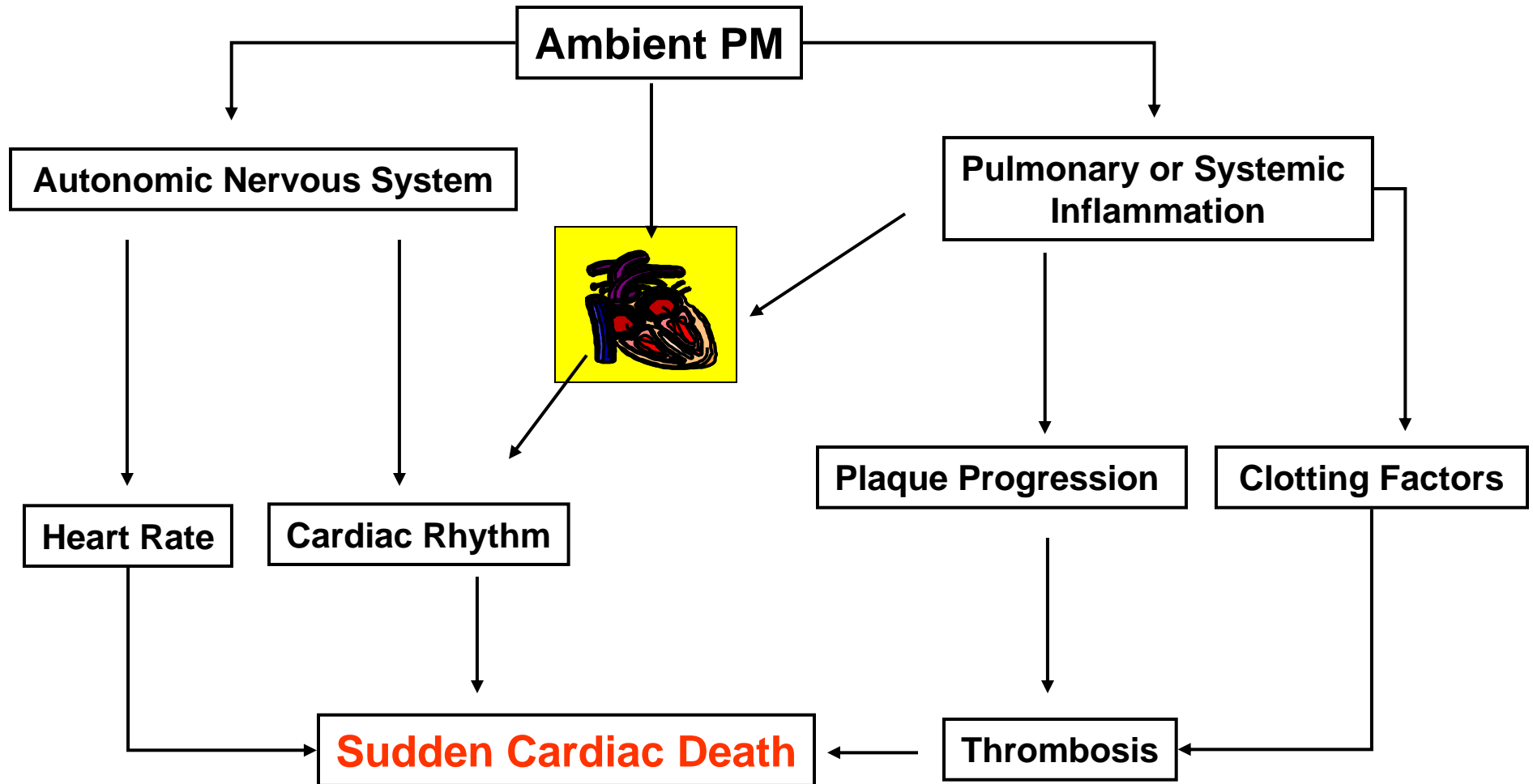
The number of times that implanted defibrillators discharged were related to prior days levels of PM and PM components

PM <sub>2.5</sub>	1.22 (0.7,2.0)
BC	2.16 (1.0,4.9)



Peters et al, 2000

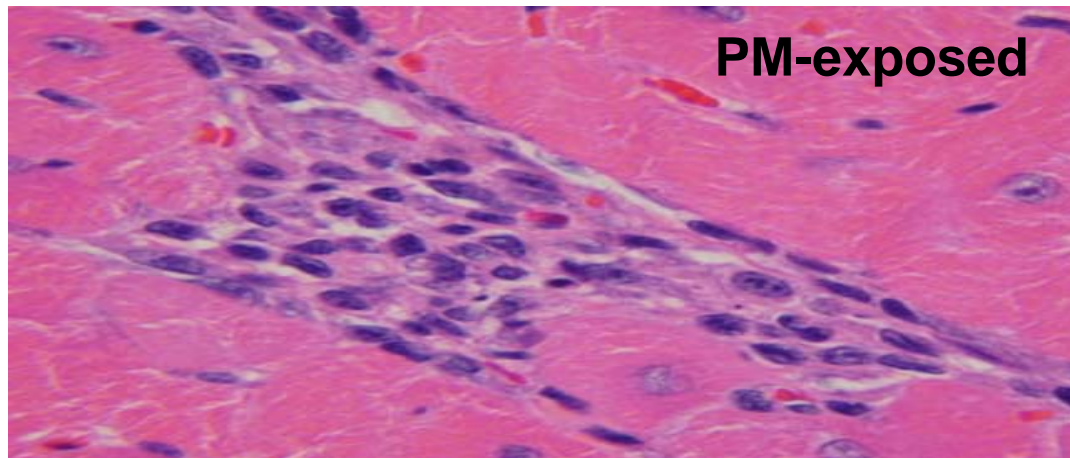
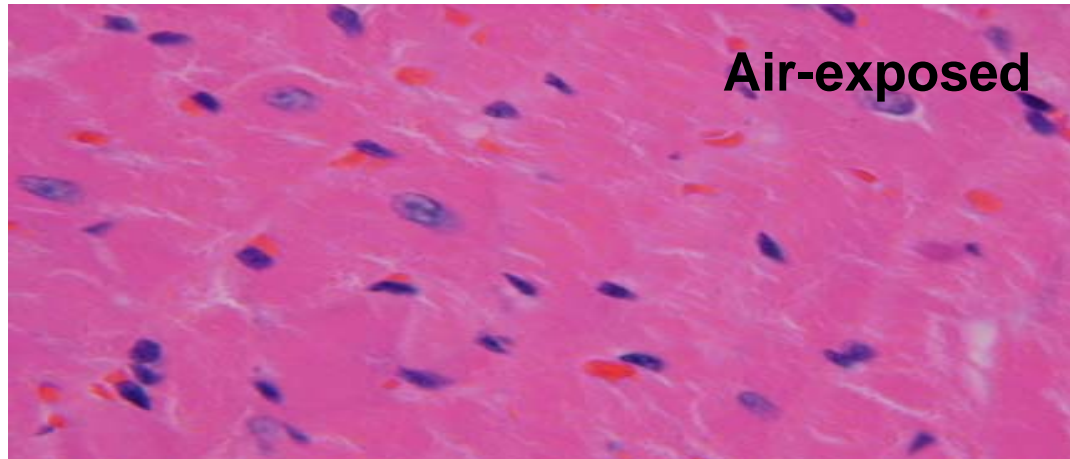
# Potential Effects of PM on the Cardiovascular System



RESEARCH & DEVELOPMENT

*Building a scientific foundation for sound environmental decisions*

# PM Causes Injury to Cardiac Cells



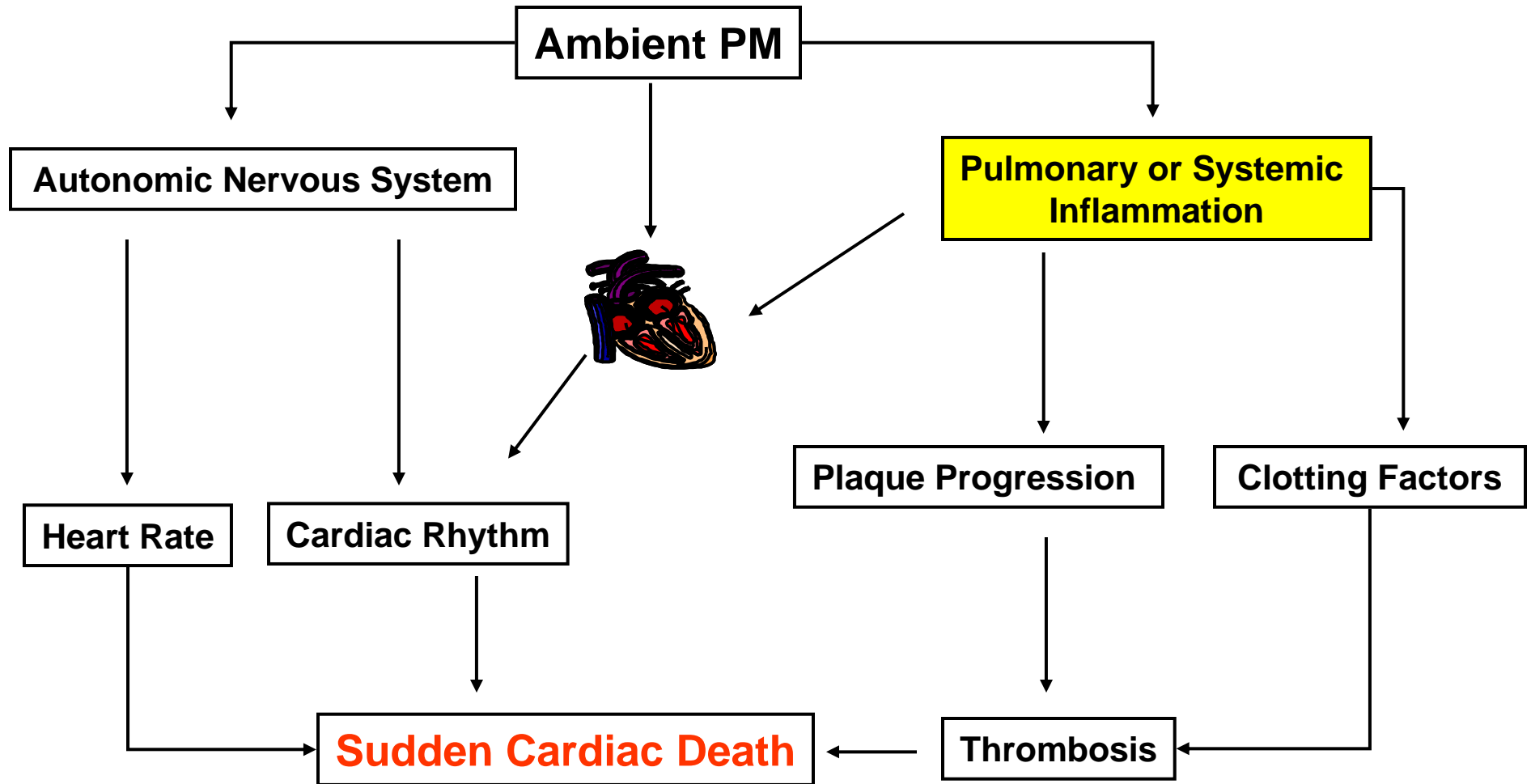
Rats exposed to ambient  
PM one day per week for  
16 weeks

Kodavanti et al., 2003

RESEARCH & DEVELOPMENT

*Building a scientific foundation for sound environmental decisions*

# Potential Effects of PM on the Cardiovascular System

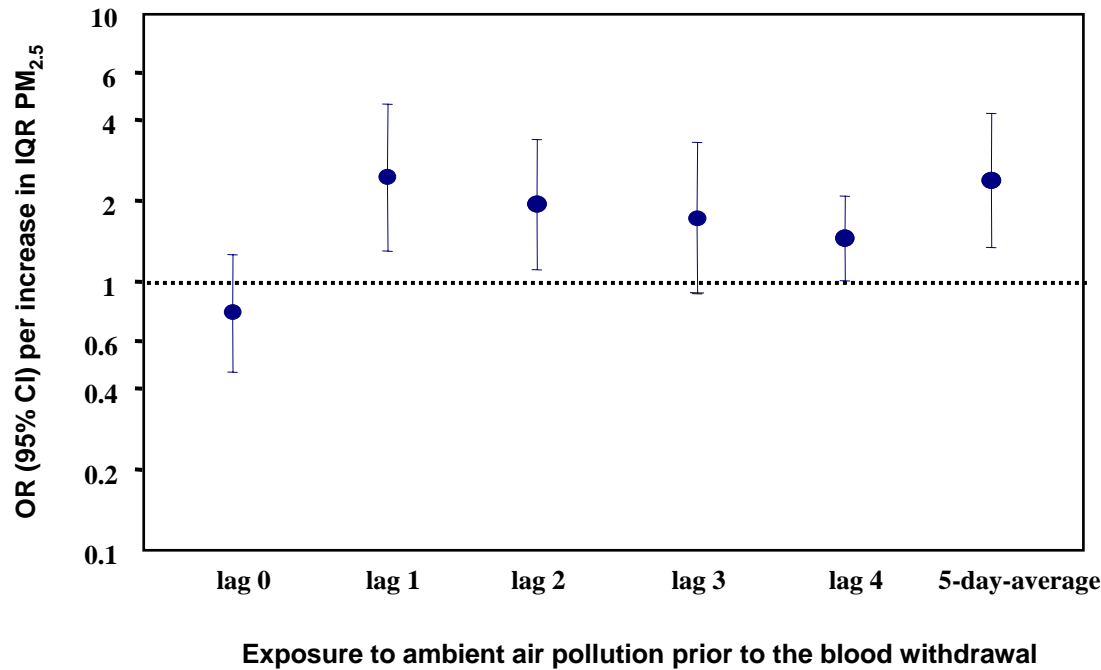


RESEARCH & DEVELOPMENT

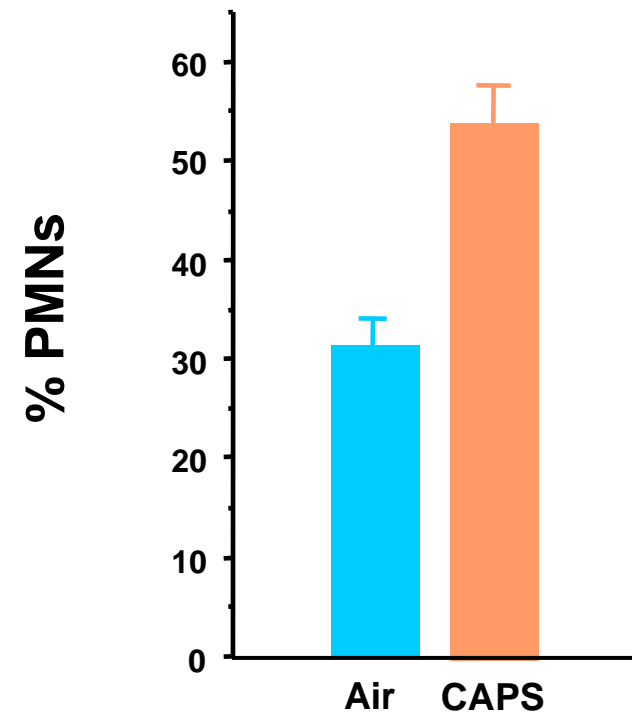
*Building a scientific foundation for sound environmental decisions*

# PM Increases Vascular Inflammation

### Increase in blood C Reactive Protein in Humans



### Increase in blood PMNs in Rats Exposed to CAPS



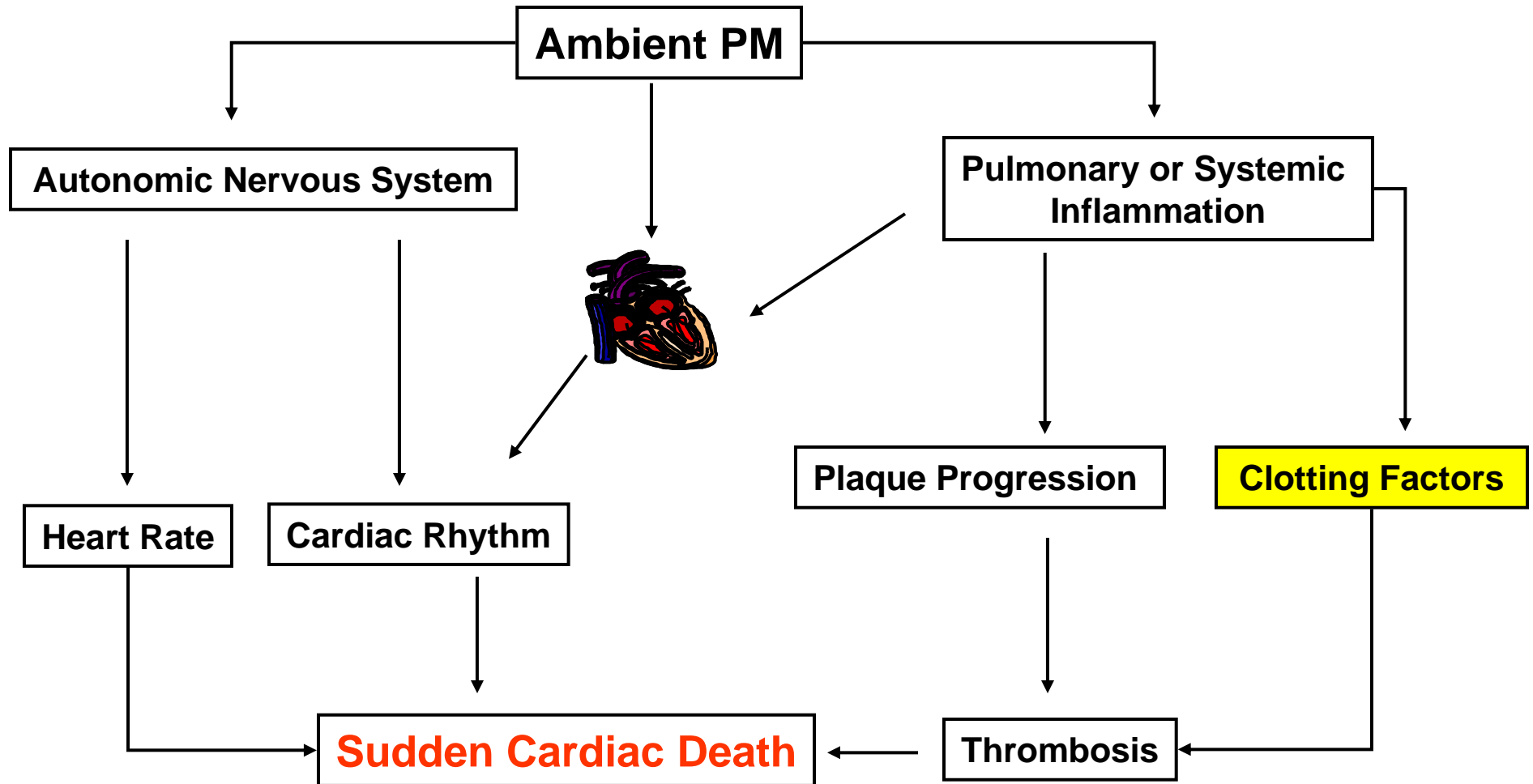
Rueckerl et al., 2004

Gordon et al., 2000

RESEARCH & DEVELOPMENT

*Building a scientific foundation for sound environmental decisions*

# Potential Effects of PM on the Cardiovascular System



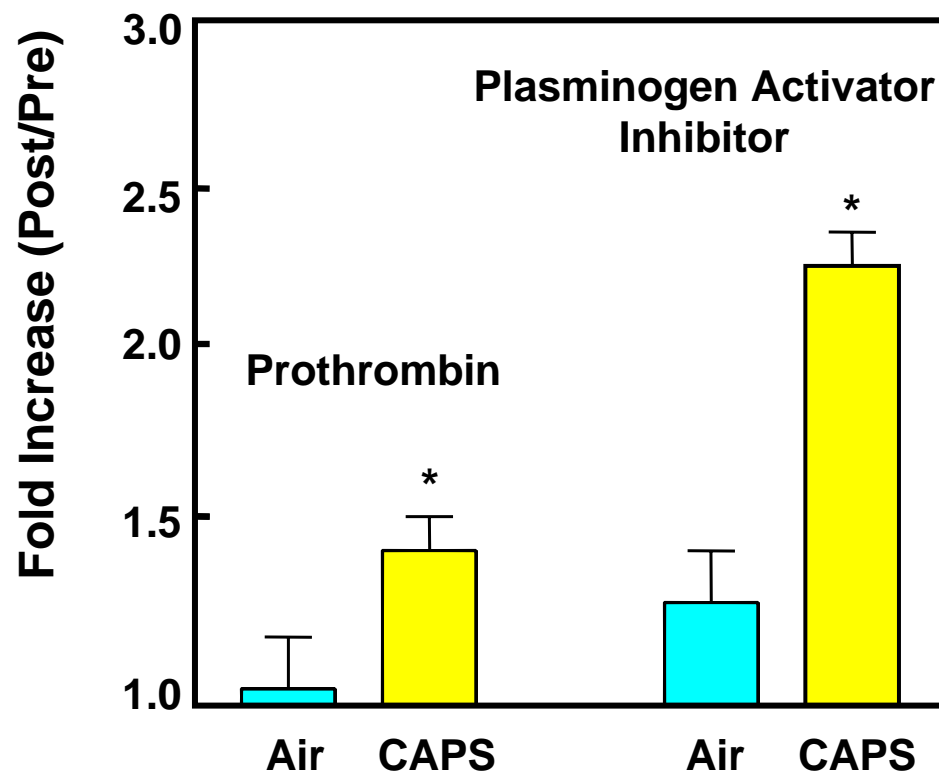
RESEARCH & DEVELOPMENT

*Building a scientific foundation for sound environmental decisions*

# PM Increases Levels of Clotting and Coagulation Factors

Humans exposed to CAPS have changes in several blood factors which could potentially lead to a more pro-thrombogenic environment.

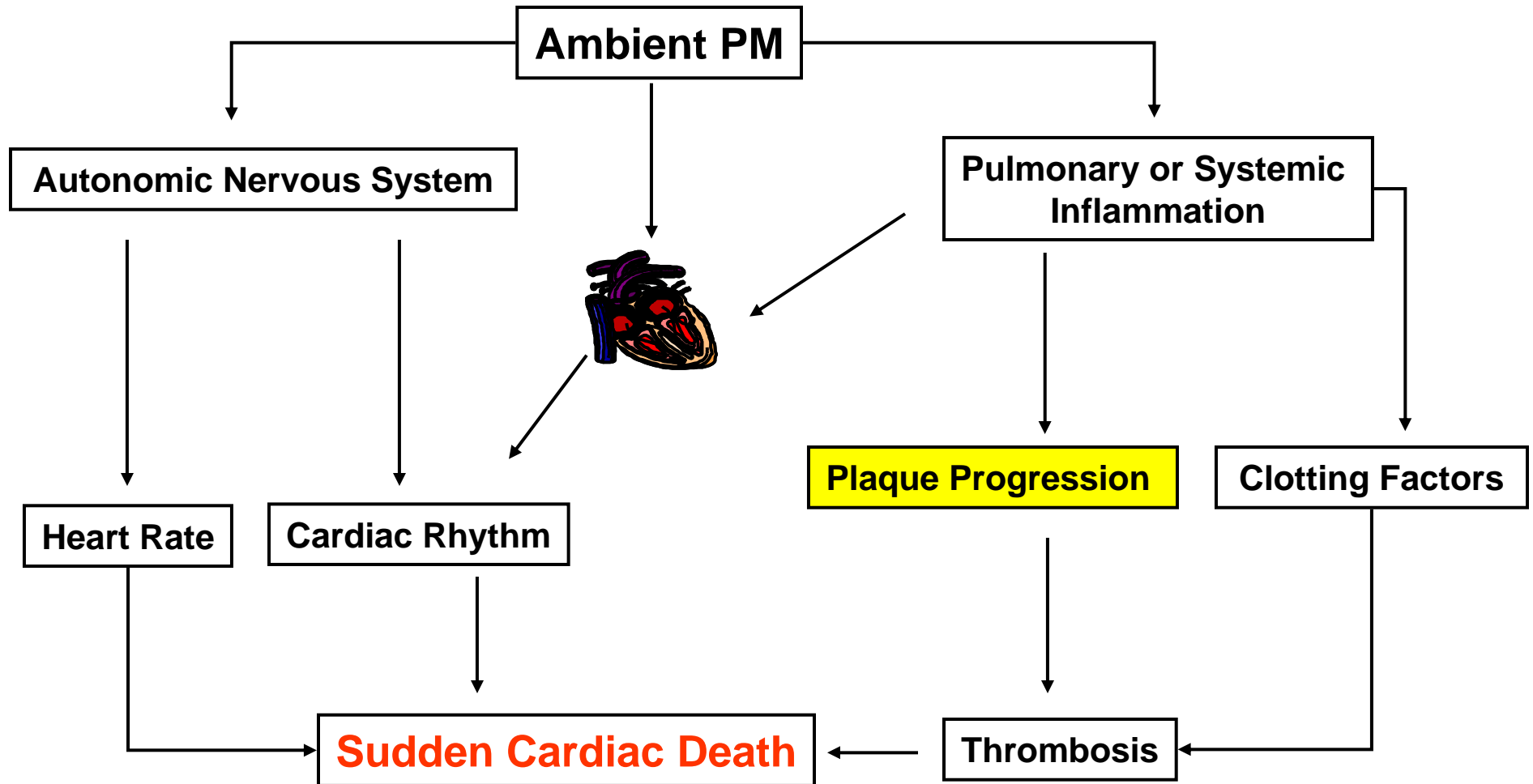
The net changes in these factors could potentially lead to an environment conducive to the formation of blood clots.



Devlin et al, 2004



# Potential Effects of PM on the Cardiovascular System

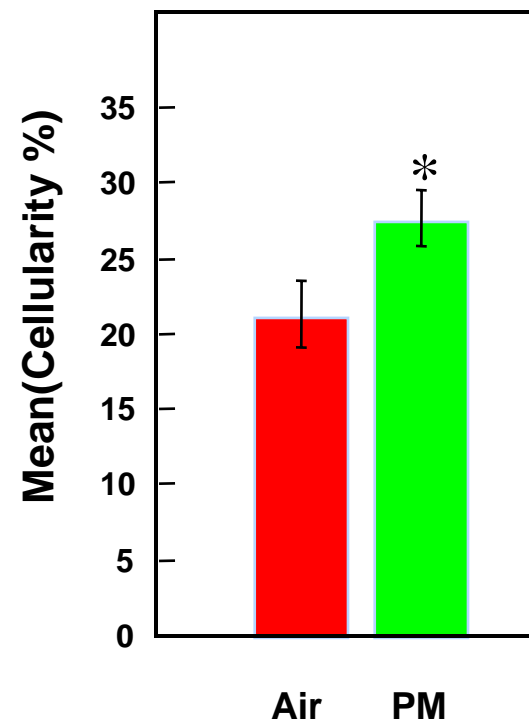
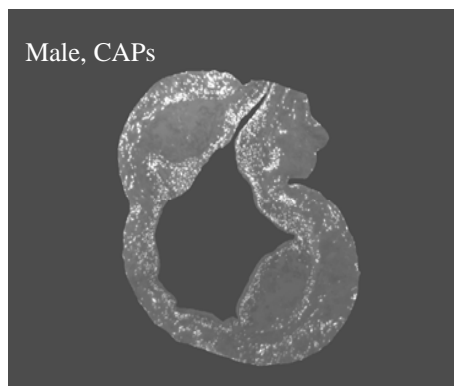


RESEARCH & DEVELOPMENT

*Building a scientific foundation for sound environmental decisions*

# PM Increases Arterial Plaque Thickness

Subchronic exposure of ApoE<sup>-/-</sup>-LDLr<sup>-/-</sup> double knockout mice to CAPS for 6h/day, 5d/week, for 6 months (average of 110  $\mu\text{g}/\text{m}^3$ ) increases plaque cellularity.

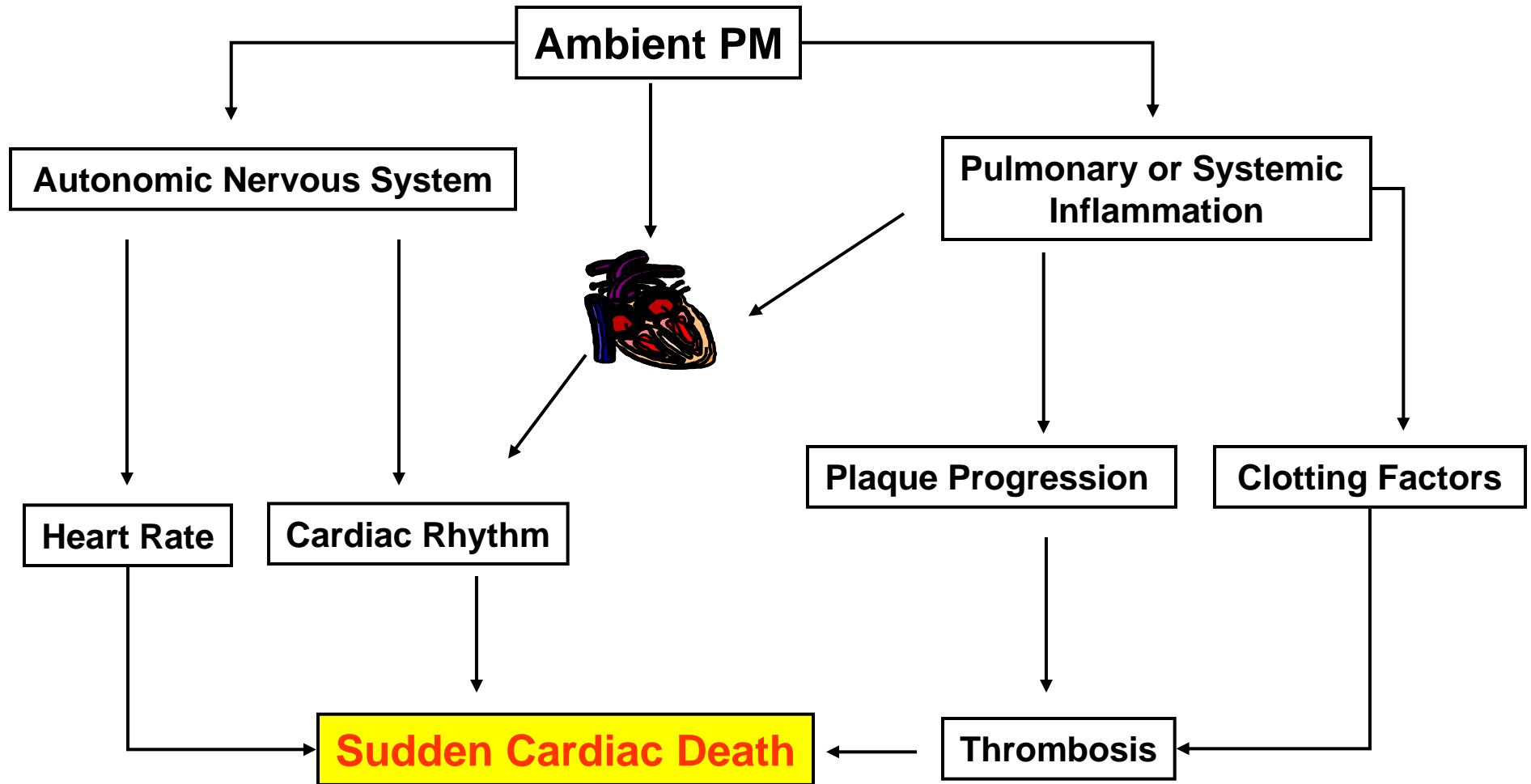


Chan et al., 2004

RESEARCH & DEVELOPMENT

*Building a scientific foundation for sound environmental decisions*

# Potential Effects of PM on the Cardiovascular System

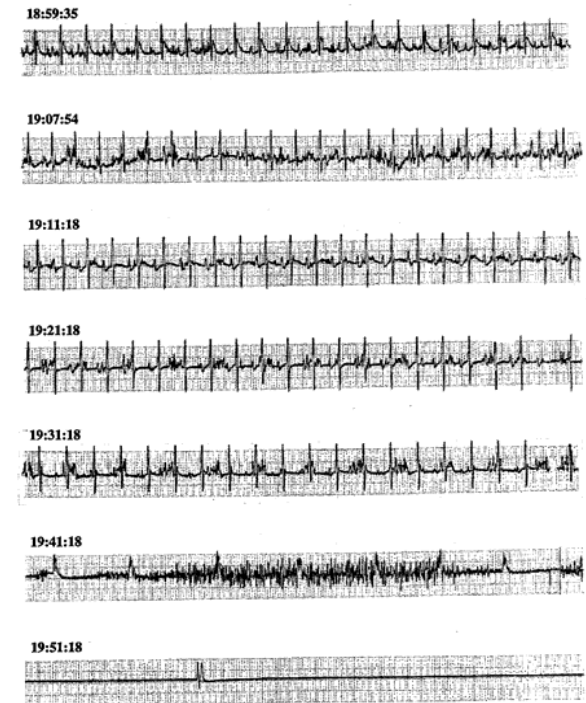
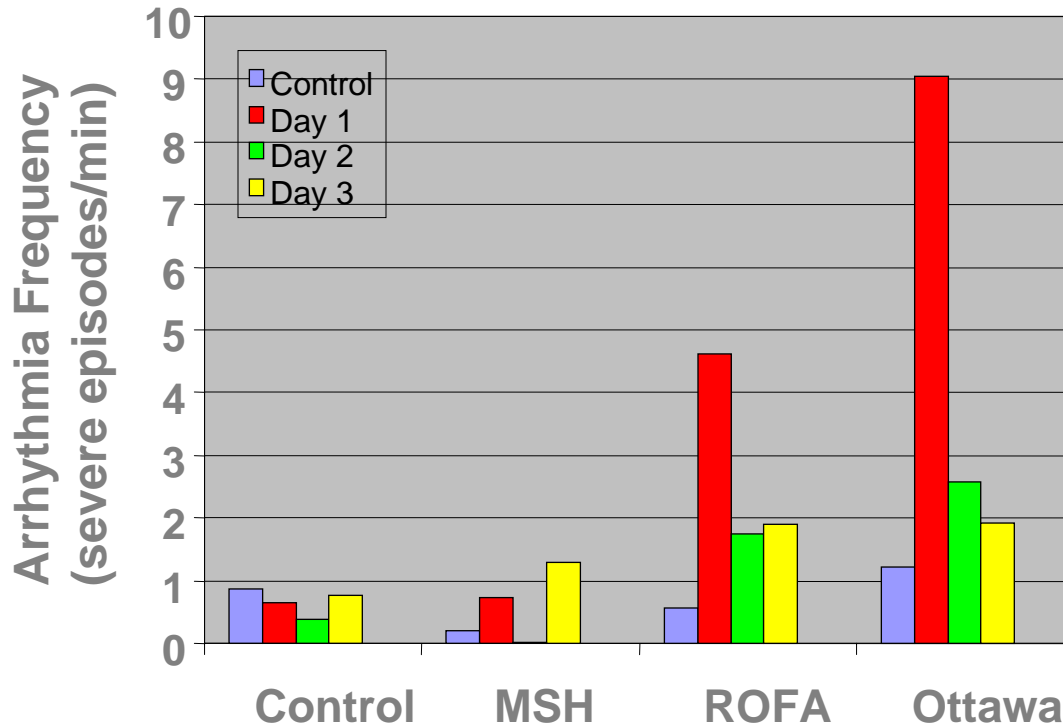


RESEARCH & DEVELOPMENT

*Building a scientific foundation for sound environmental decisions*

# PM Causes Fatal Arrhythmias in Animals

Rats were treated with PM from various sources and arrhythmias measured for 3 days after exposure



Watkinson et al., 2000

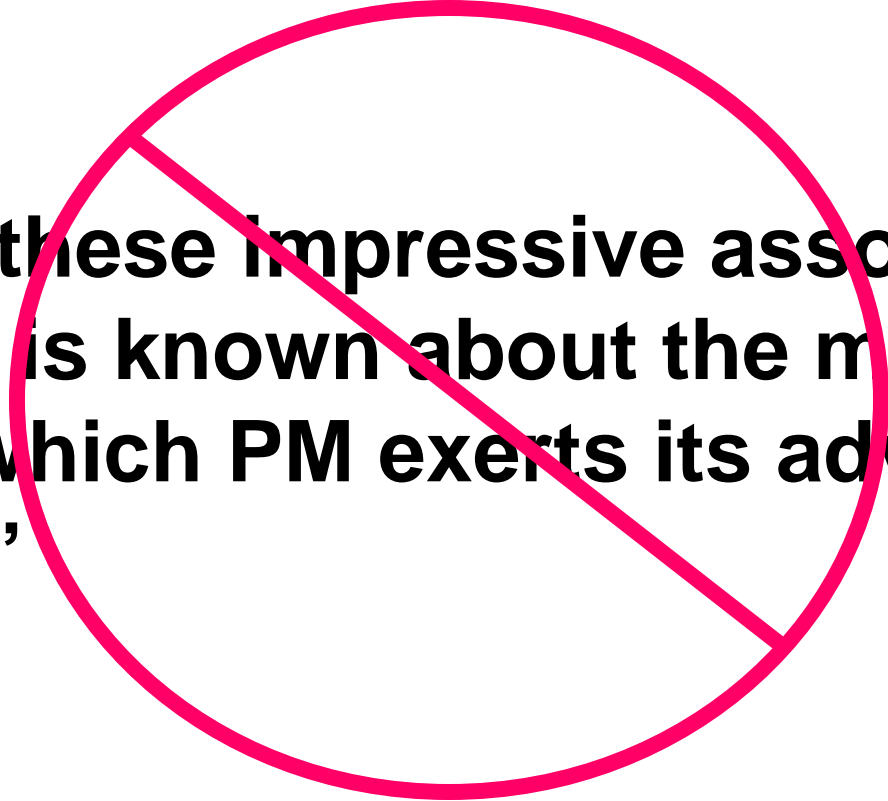
RESEARCH & DEVELOPMENT

Building a scientific foundation for sound environmental decisions

# Progress Made...

---

**“Despite these impressive associations, very little is known about the mechanisms by which PM exerts its adverse effects...”**



# Mechanistic Studies Have:

---

- **Defined several biologically plausible pathophysiological pathways by which PM can increase mortality and morbidity.**
- **Provided coherence to the epidemiology studies and extended their observations, thus strengthening the science in support of the PM standard.**

# What Else Remains to Be Done?

---

**My goal is simple. It is complete understanding of the universe, why it is as it is and why it exists at all." —**

***Stephen Hawking.***

# Key Areas of Uncertainty

---

- Many of these studies have only recently been published and need to be replicated in other labs and species.
- It is not clear whether different PM components (or PM derived from different sources) exert their effects by the same or a series of different mechanisms.  
additivity versus synergism
- It is not clear whether different mechanisms operate in different susceptible populations or in different organs.
- Most current mechanistic PM research has been at the organ or physiological level  
very little known about how PM causes effects at the cellular or molecular level

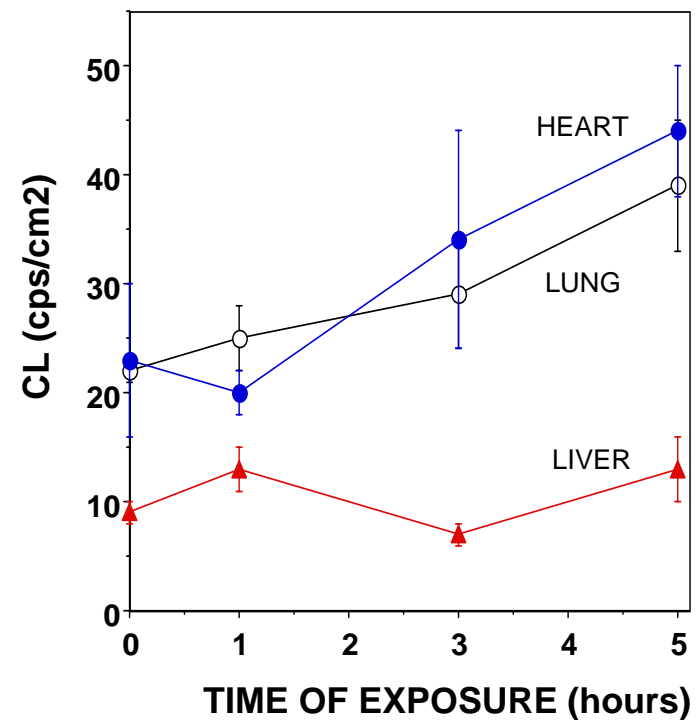


# Does PM Cause Adverse Effects by Inducing Oxidative Stress?

Rats exposed to fine CAPS show chemiluminescence in the lung, heart, and liver.

This is an indication that PM can induce oxidative stress in critical organs.

**Implications for:**  
protecting people from PM  
Identifying potentially susceptible people



Gurgueira et al 2002