

Appendix H



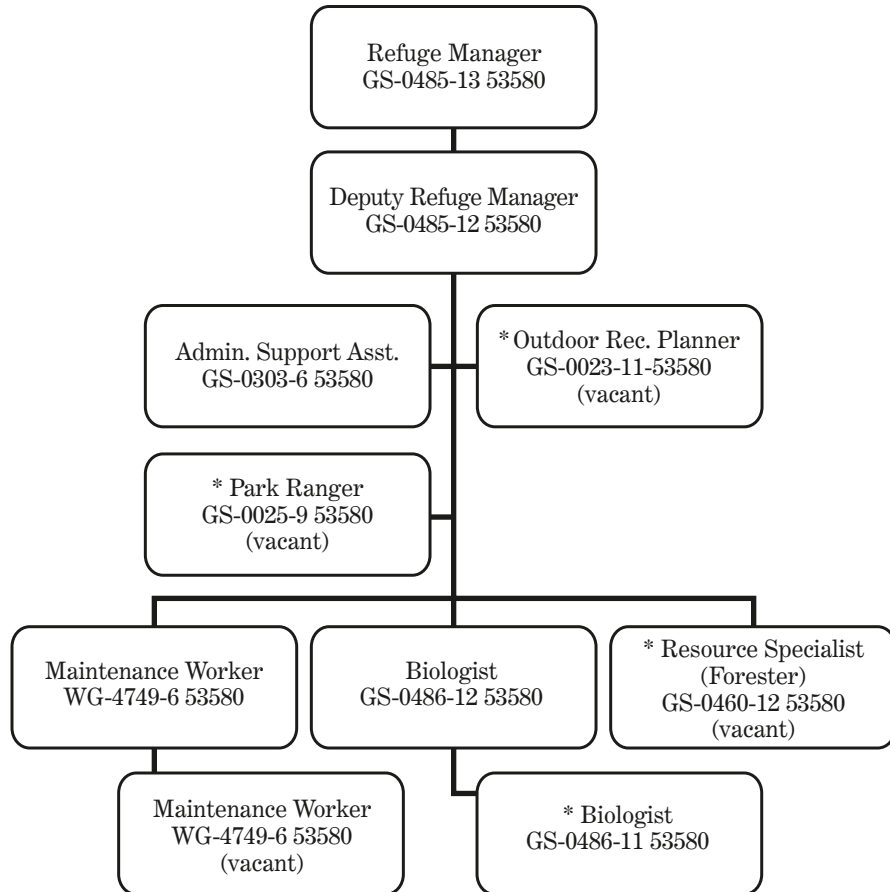
Ian Drew/USFWS

Moose

Staffing Charts



U. S. Fish and Wildlife Service
 Lake Umbagog National Wildlife Refuge
 Current Approved Staff (Alternative A)

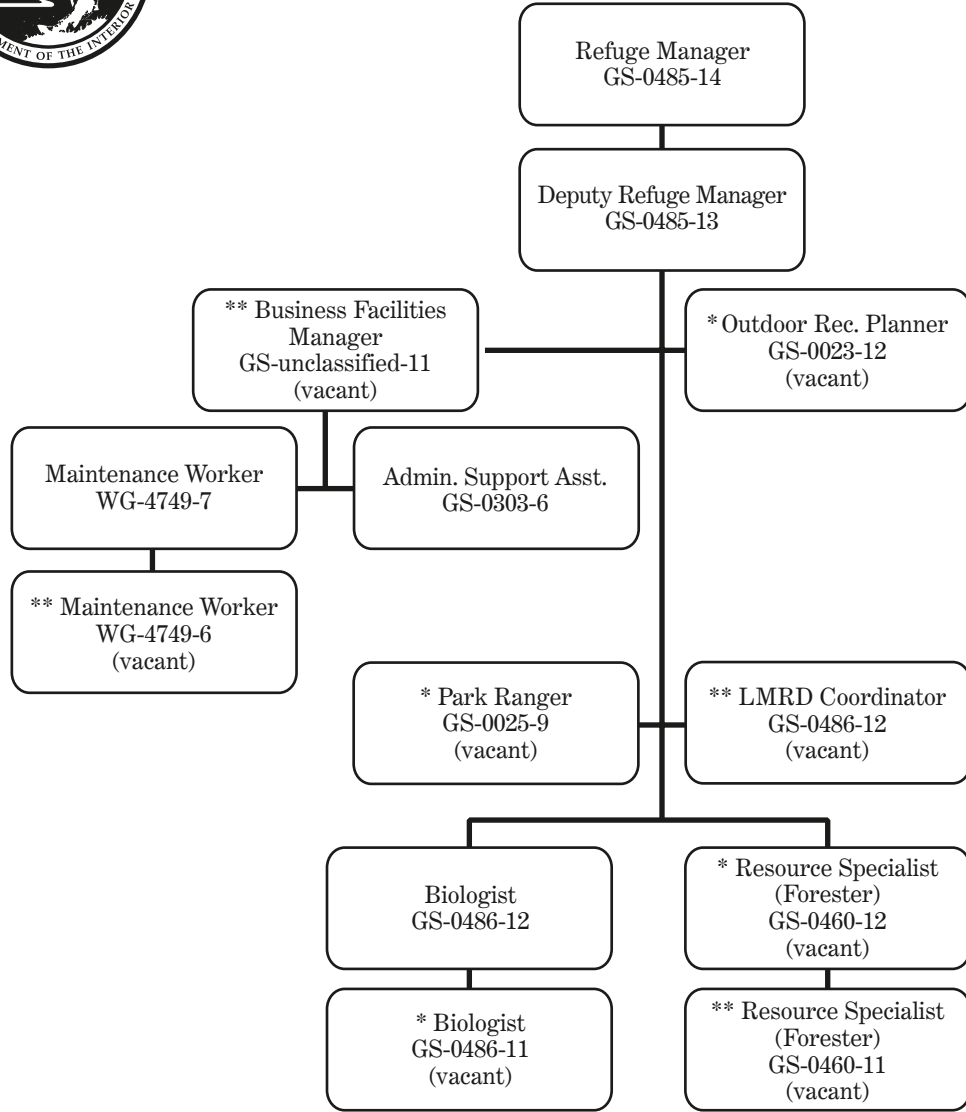


Seasonal Staff includes:
 1 Biotech (GS-0404-7)
 3 Interns
 1 YCC Crew Leader
 4 YCC Crew

* Essential Staff



U. S. Fish and Wildlife Service
 Lake Umbagog National Wildlife Refuge
 Proposed Staff (Alternatives B and C)



* Essential Staff
 ** New Expanded Staff

GS levels indicate full performance level

Seasonal Staff includes:
 2 Biotech (GS-0404-7)
 4 Interns
 1 YCC Crew Leader
 4 YCC Crew
 1 Maintenance Worker (WG-4749-5)
 1 ORP GS-0023-09