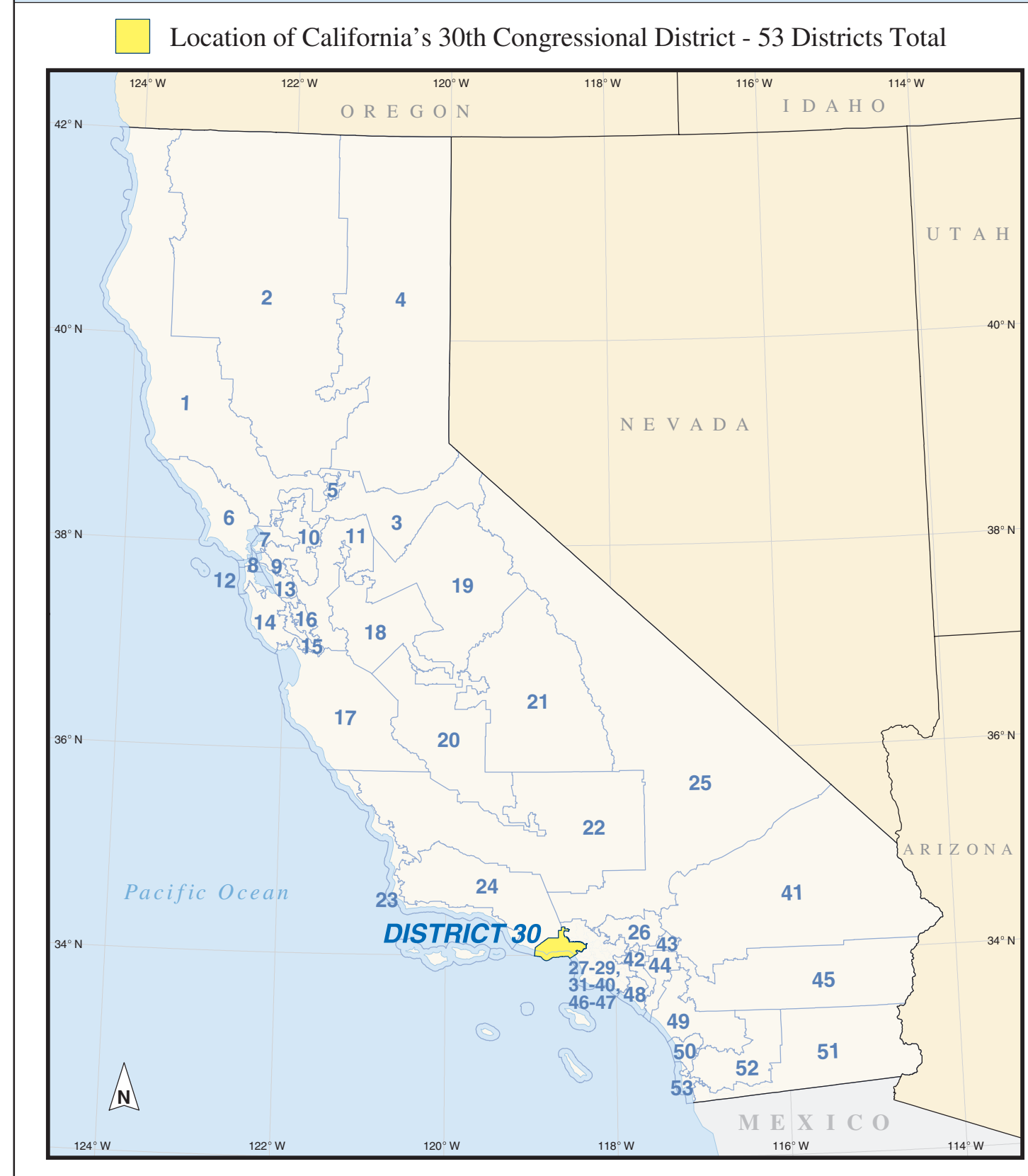
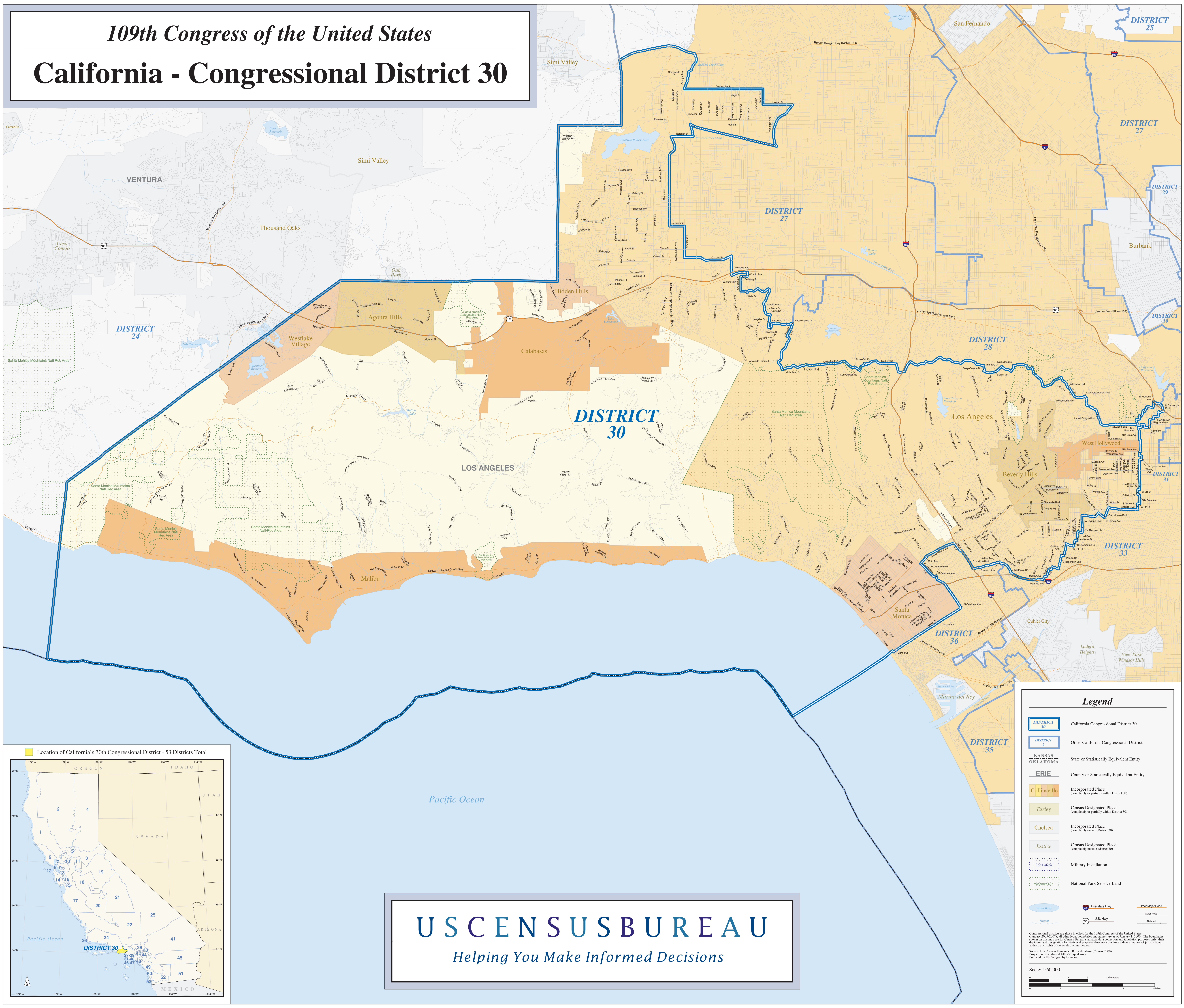


# 109th Congress of the United States

## California - Congressional District 30



### Legend

- DISTRICT 30 California Congressional District 30
- DISTRICT 2 Other California Congressional District
- KANSAS OKLAHOMA State or Statistically Equivalent Entity
- ERIE County or Statistically Equivalent Entity
- Collinsville Incorporated Place (completely or partially within District 30)
- Turley Census Designated Place (completely or partially within District 30)
- Chelsea Incorporated Place (completely outside District 30)
- Justice Census Designated Place (completely outside District 30)
- Fort Belvoir Military Installation
- Yosemite NP National Park Service Land
- Water Body Water Body
- Interstate Hwy Interstate Hwy
- U.S. Hwy U.S. Hwy
- Other Major Road Other Major Road
- Other Road Other Road
- Railroad Railroad

Congressional districts are shown in effect for the 109th Congress of the United States (January 2005-2007) as they have boundaries and names as of January 1, 2003. The boundaries shown on this map are for Census Bureau statistical data collection and tabulation purposes only; their direction and designation for statistical purposes are not a constitutionally determined jurisdictional authority or right of ownership or control.

Source: U.S. Census Bureau, 1992-2000 decennial census (Census 2000) Projection: State-based APO, Equal Area Prepared by the Geography Division

Scale: 1:60,000

**USCENSUSBUREAU**  
*Helping You Make Informed Decisions*