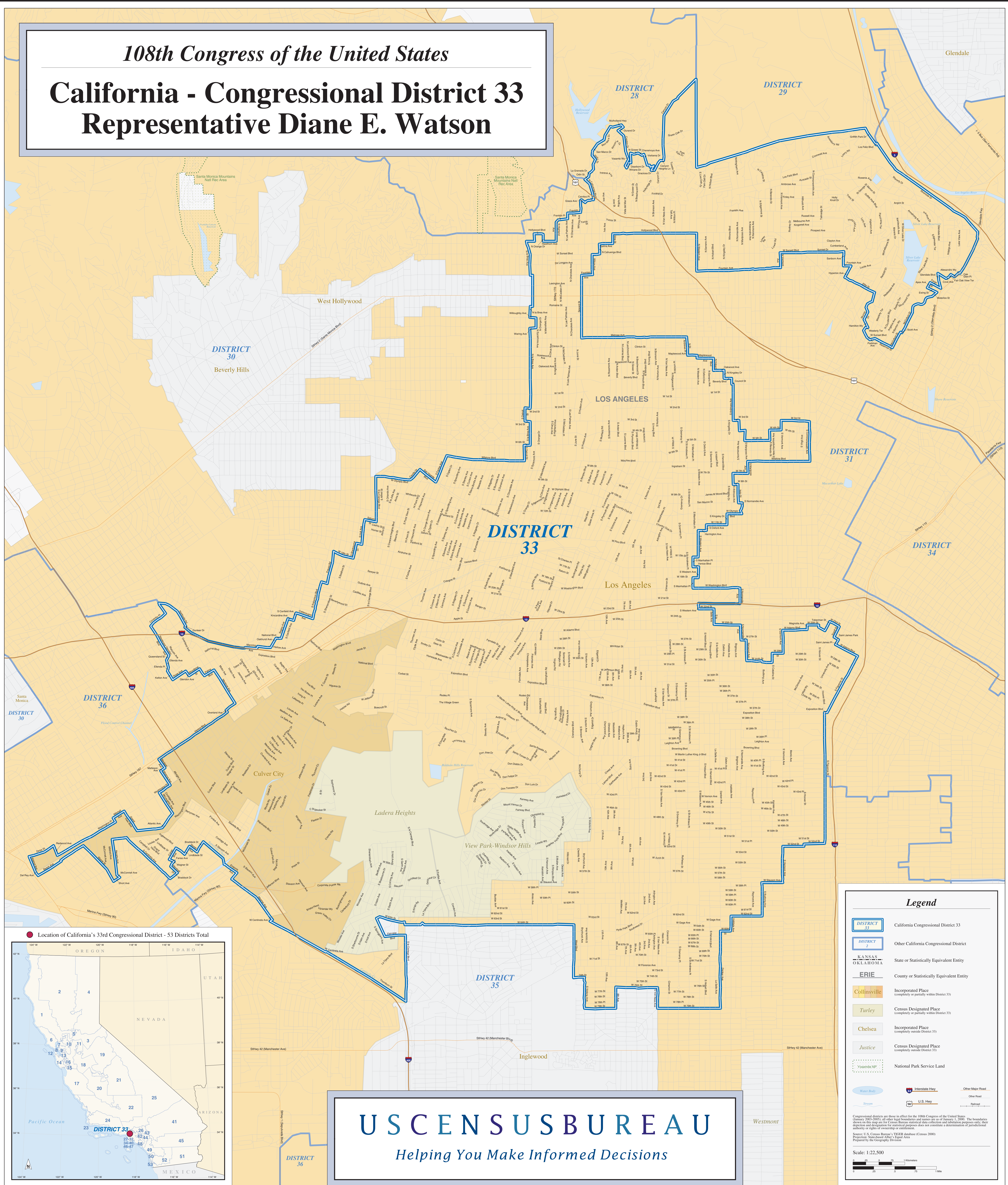


108th Congress of the United States

California - Congressional District 33

Representative Diane E. Watson



Legend

- DISTRICT 33 California Congressional District 33
- DISTRICT 2 Other California Congressional District
- KANSAS OKLAHOMA State or Statistically Equivalent Entity
- ERIE County or Statistically Equivalent Entity
- Collinsville Incorporated Place (completely or partially within District 33)
- Turley Census Designated Place (completely or partially within District 33)
- Chelsea Incorporated Place (completely outside District 33)
- Justice Census Designated Place (completely outside District 33)
- Yosemite NP National Park Service Land
- Water Body Water Body
- Interstate Hwy Interstate Highway
- Other Major Road Other Major Road
- U.S. Hwy U.S. Highway
- Other Road Other Road
- Railroad Railroad

Congressional districts are those in effect for the 108th Congress of the United States (January 2003-2005); all other legal boundaries and names are as of January 1, 2000. The boundaries shown on this map are for Census Bureau statistical data collection and tabulation purposes only. They do not constitute a determination of jurisdictional authority or rights of ownership or entitlement.

Source: U.S. Census Bureau's TIGER database (Census 2000) Projected Statehood Alter - Equal Area Prepared by the Geography Division

Scale: 1:22,500

US CENSUS BUREAU
Helping You Make Informed Decisions