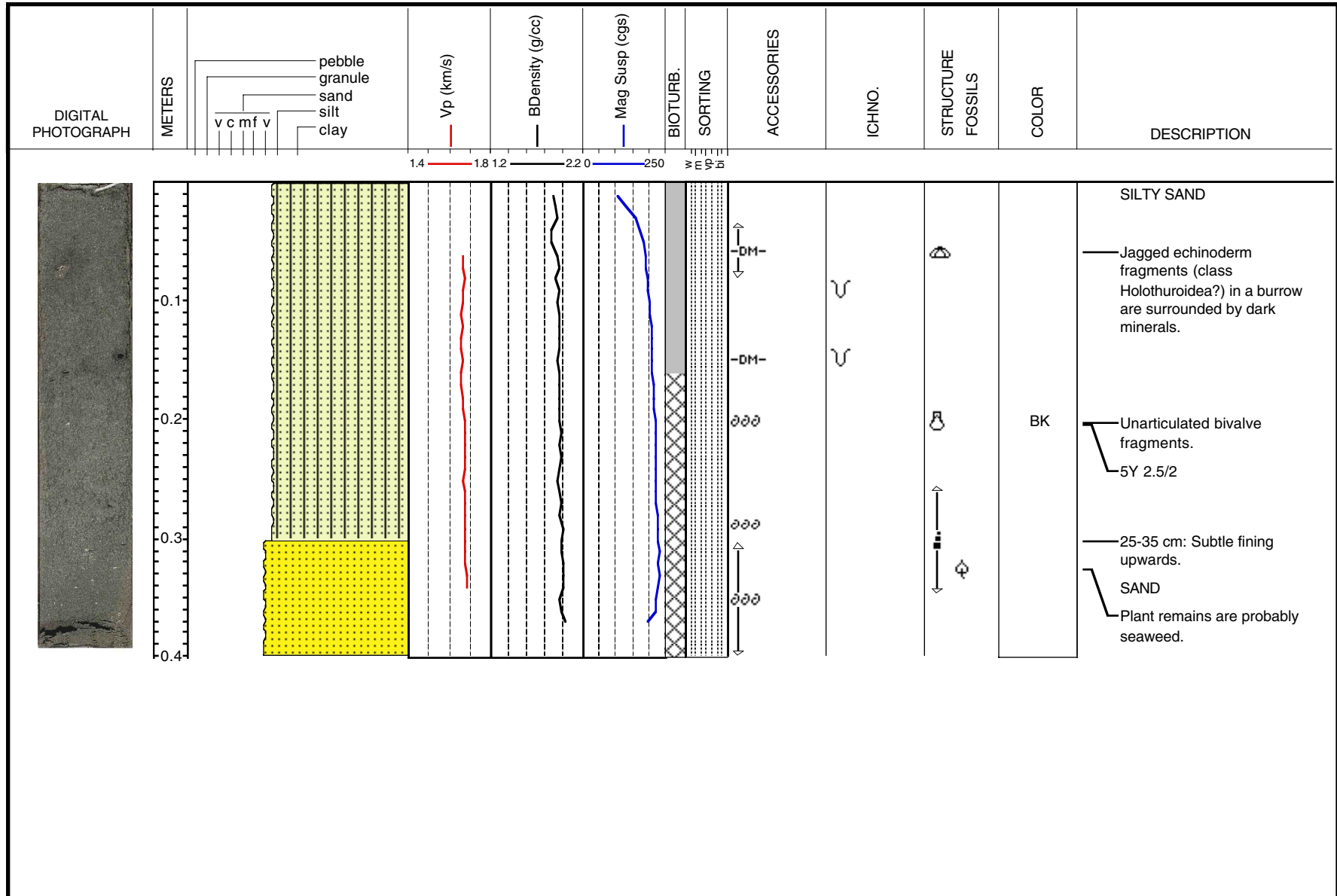


**U.S. Geological Survey
MONTEREY BAY NATIONAL MARINE SANCTUARY PROJECT**

Water Depth: 100 meters
Lat/Lon: 37.27541, -122.67925
Collected: 9/4/1997

P197MB - B603 SS (0-40 cm)



[Return to Index Map](#)

[Return to Legend](#)