



## MANAGER'S BRIEFING

Date: Friday, February 13<sup>th</sup>, 2009 Time: 1030 CT  
Preparedness levels: Eastern Area 1 National 1

**This report will be completed on Monday and Friday unless significant activity occurs.**

[National WX Service Link](#) **Fire Weather Watches/Red Flag Warnings: None.**

Please check your local National Weather Service Fire Weather Forecast for more info.

[EA Situation Report Link](#) **Eastern Area Activity** [EA Staffing](#)

Situation Report activity from 2/12 (Not all units are reporting)

<b>Unit Fire danger</b>	Low: 118	Moderate: 2	High: 2	Very High: 0	Extreme : 0
<b>New Fire Activity</b>	Fires: 4	Acres: 3			
<b>Rx Activity:</b>	Fires: 0	Acres: 0			

Reported Initial Attack Activity (Monday - Tuesday)						
Agency	State	Unit	Human	Acres	Lightning	Acres
State	Maryland	MDS	3	2		
USFS	Ohio	WAF	1	1		
<b>Total</b>			<b>4</b>	<b>3</b>	<b>0</b>	<b>0</b>

[NWS Point Forecasts](#)

### Fire Potential Outlook

[Forecast Fire Danger](#)

#### Great Lakes Compact:

**Fire Danger:** Fire Danger is low.

**Fire Weather:** An area of low pressure will slide eastward through the Big Rivers creating areas of mainly light snow over far southern Wisconsin and the southern 1/2 of the LP of Michigan Friday night into Saturday. Scattered snow showers will also affect the arrowhead of Minnesota down into north central Wisconsin into Friday night. Then dry conditions and near normal temperatures are forecast through the rest of the weekend into Presidents' Day. Computer models run on 2/13 indicate a fairly strong storm system affecting the Eastern Area Tuesday night into Friday next week.

**Activity:** No Activity reported. National Service reports a 75% chance of major flooding for the Red River Valley area this spring dependent on additional rain, snow and timing of current snow melt.

#### Big Rivers Compact:

**Fire Danger:** Fire Danger is low.

**Fire Weather:** An area of low pressure will slide eastward through the Big Rivers creating areas of rain or snow over Iowa, northern Missouri, and central parts of Illinois and Indiana Friday afternoon into early Saturday. The heaviest snow will affect western Iowa. Then dry conditions and near normal temperatures are forecast for the rest of the weekend through Presidents' Day. Computer models run on 2/13 indicate a fairly strong storm system affecting the Eastern Area Tuesday night into Friday next week.

**Activity:** Ice damage cleanup is on-going. Some minor flooding in scattered areas (IA, IN, IL) across the compact due to precipitation, snow melt and ice jamming.

#### Northeast Compact:

**Fire Danger:** Fire Danger is mainly low.

**Fire Weather:** Strong low pressure will pull out of eastern New England Friday afternoon. Brisk and chilly northwest winds will linger into Friday afternoon over the eastern parts of the compact along with a few snow showers. Mainly dry and slightly above normal temperatures are then expected into early next week. Computer models run on 2/13 indicate a strong storm system affecting the eastern states from the middle to the latter parts of next week.

**Activity:** No activity was reported.

#### Mid-Atlantic Compact:

**Fire Danger:** Fire Danger is mainly low to moderate.

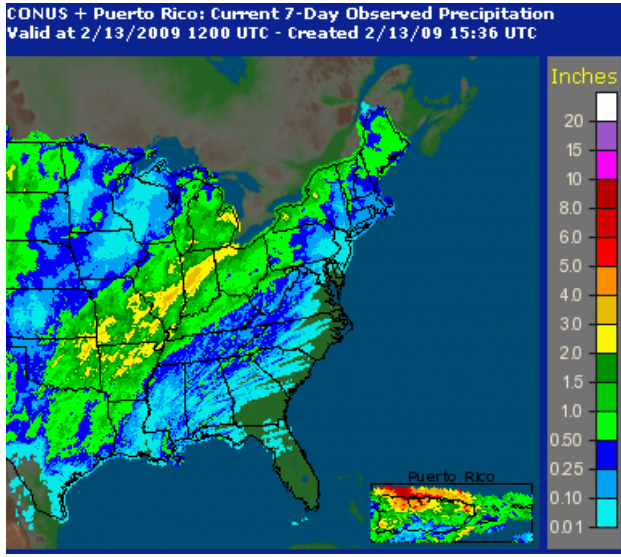
**Fire Weather:** A weakening area of low pressure will slide eastward through the Ohio Valley later Friday night into Saturday creating a scattered showers over Ohio and West Virginia. Otherwise dry conditions and slightly below normal temperatures are forecast for the rest of the weekend through Presidents' Day. Computer models run on 2/13 indicate a fairly strong storm system affecting the Eastern Area Tuesday night into Friday next week.

Slow down! Your family will be waiting for you.

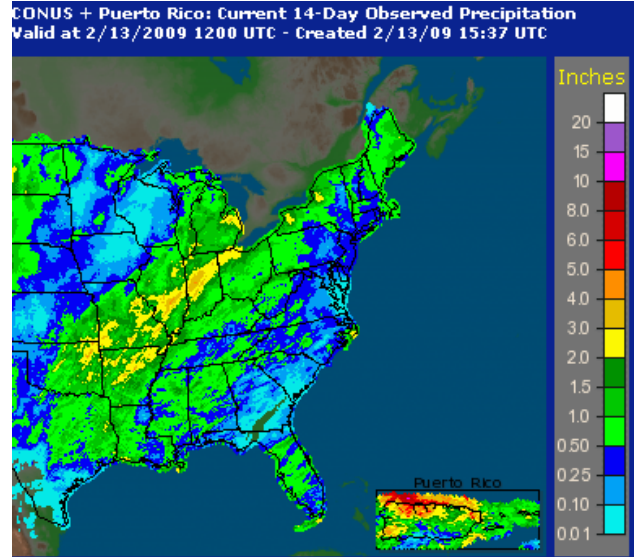
**Activity:** Maryland State reported light initial attack yesterday. Minor flooding is occurring along several streams and rivers in Ohio.

**Fire Weather/Fire Danger Forecast**

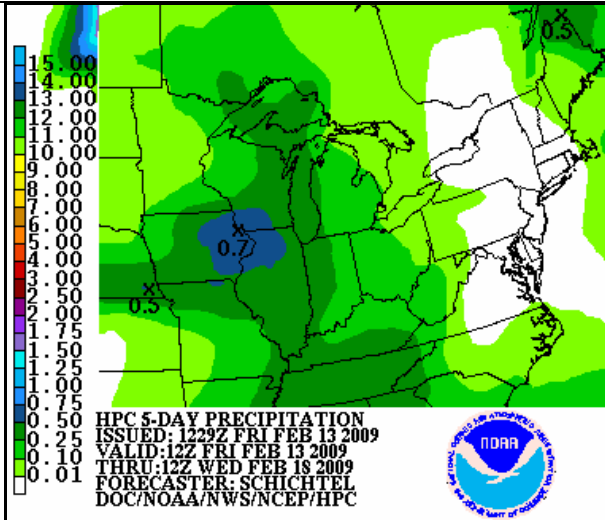
**Previous 7 Day Accumulated Precipitation**



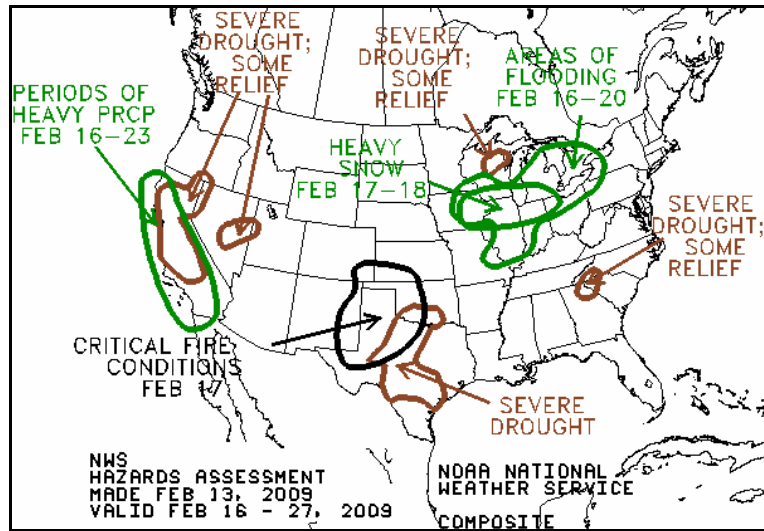
**Previous 14 Day Accumulated Precipitation**



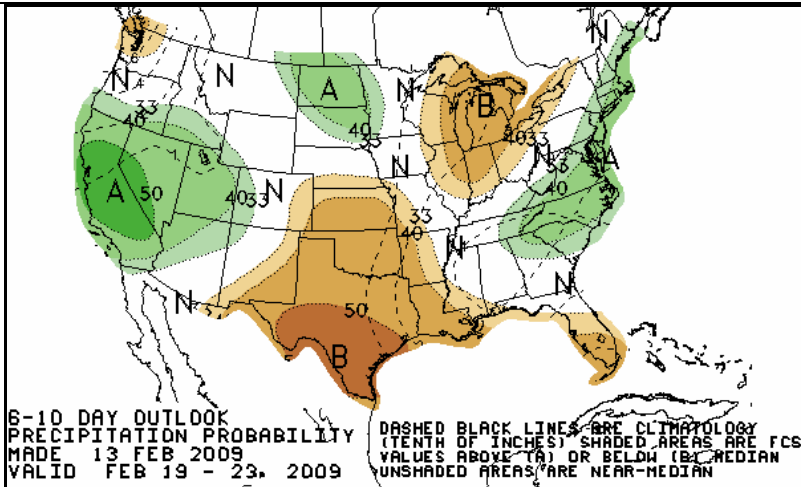
**5 Day Forecast Precipitation Totals**



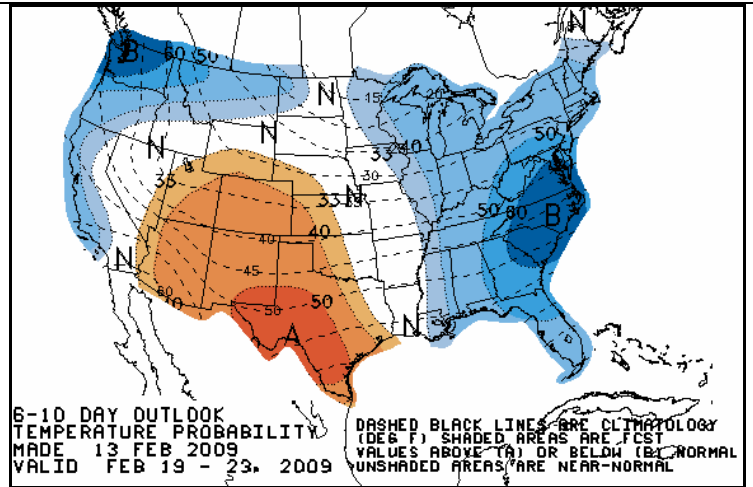
**10 Day Forecast Hazards Assessment**



**6 to 10 Day Precipitation Outlook**



**6 to 10 Day Temperature Outlook**



[EA Weather Briefing Link](#)

[Observed Fire Danger Link](#)

[Forecasted Fire Danger Link](#)

[Four Panel Forecast](#)

Slow down! Your family will be waiting for you.

Prescribed Burning								
Agency	Prescribed Fires				Wildland Fire Use			
	New Fires		Year to date		New Fires		Year to date	
	Fires	Acres	Fires	Acres	Fires	Acres	Fires	Acres
<b>BIA</b>	0	0	0	0	0	0	0	0
<b>FWS</b>	0	0	0	0	0	0	0	0
<b>NPS</b>	0	0	0	0	0	0	0	0
<b>ST</b>	0	0	5	295	0	0	0	0
<b>FS</b>	0	0	11	3058	0	0	0	0
<b>TOTALS</b>	<b>0</b>	<b>0</b>	<b>16</b>	<b>3353</b>	<b>0</b>	<b>0</b>	<b>0</b>	<b>0</b>

For today's planned burns please see the EA Daily Planned RX link above.

### Winter Ice Storm – Region VII

- RRCC Status: activated at Level III (minimal staffing), 6:00 a.m. - 6:00 p.m. CST
- ESFs 3 and 8 are on stand-by; ESF 12 continues to provide support from a remote location

### Missouri

- Emergency Declaration (FEMA-3303-EM-MO) was signed on January 30, 2009
- State EOC (SEOC) activated at Level II (all state agencies activated), 7:00 a.m. - 7:00 p.m. CST
- Governor requested a Major Disaster Declaration on February 6
- IA PDAs continuing
- Fatalities: 8 confirmed (MO EMA SITREP as of 5 :10 pm CST, Feb 12)
- Power outages: 8,529 (+900) customers; the majority of power outages remain isolated to the extreme southwest portion of the state (MO EMA SITREP as of 5 :10 pm CST, Feb 12)
- Heavy rains and high winds Tuesday and Wednesday, Feb 10-11, resulted in additional outages and mud is preventing crews from reaching many remote locations (MO EMA SITREP as of 5 :10 pm CST, Feb 12)
- Estimated time of restoration for most customers will be by the end of this week, with the exception of some rural areas, which will be by February 17th (MO EMA SITREP as of 5 :10 pm CST, Feb 12)
- American Red Cross Shelters: 2 (-1) / Occupants: 21 (MO EMA SITREP as of 5 :10 pm CST, Feb 12)
- Missouri Department of Transportation (MoDOT) reports 2 road closures in southeast Missouri, either due to utility damage or debris on the road (MO EMA SITREP as of 5 :10 pm CST, Feb 12)
- Five nursing homes on generator power (MO EMA SITREP as of 5 :10 pm CST, Feb 12)
- All Boil Water Orders have been lifted (MO EMA SITREP as of 5 :10 pm CST, Feb 12)
- No unmet needs and issues

### Volcanic Activity – Redoubt Volcano, Alaska

As of February 12th, unrest at Mount Redoubt continues with little change. Elevated seismicity persists, dominated by ongoing volcanic tremors and occasional small earthquakes. The Alaska Volcano Observatory (AVO) will maintain 24/7 observation of the volcano until further notice. The Aviation Color Code remains at ORANGE and the Volcano Alert Level remains at WATCH.(Region X, AVO, USGS, Earthquake Hazards Program)

[Large Fire Map](#)

[InciWeb: National Incidents](#)

Last report February 13<sup>th</sup>, 2009

Situation	Resources
Initial attack activity: Moderate (1,769 new fires) New large fires: 15 Large fires contained: 17 Uncontained large fires: 1	Area Command Teams committed: 0 NIMOs committed: 0 Type 1 IMT's committed: 0 Type 2 IMT's committed: 1 Fire Use Teams committed: 0

**National Predictive Services Discussion:** Eastern New Mexico, western Oklahoma, and much of western Texas will be windy with low humidity both Friday and Saturday, with less wind expected on Sunday and Monday. Windy and dry conditions are expected to emerge again on Tuesday. Northern Florida, Georgia, and the Carolinas will experience low humidity and increasing winds during the latter half of Sunday and into Monday and then again on Wednesday. Much cooler and more humid conditions will arrive by the end of next week.

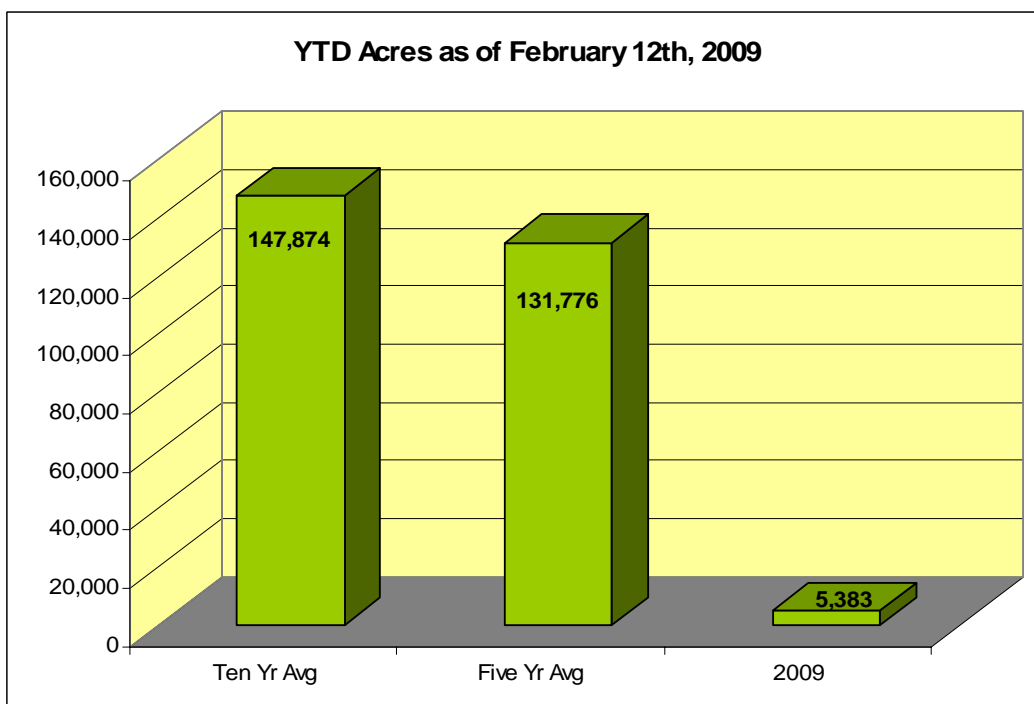
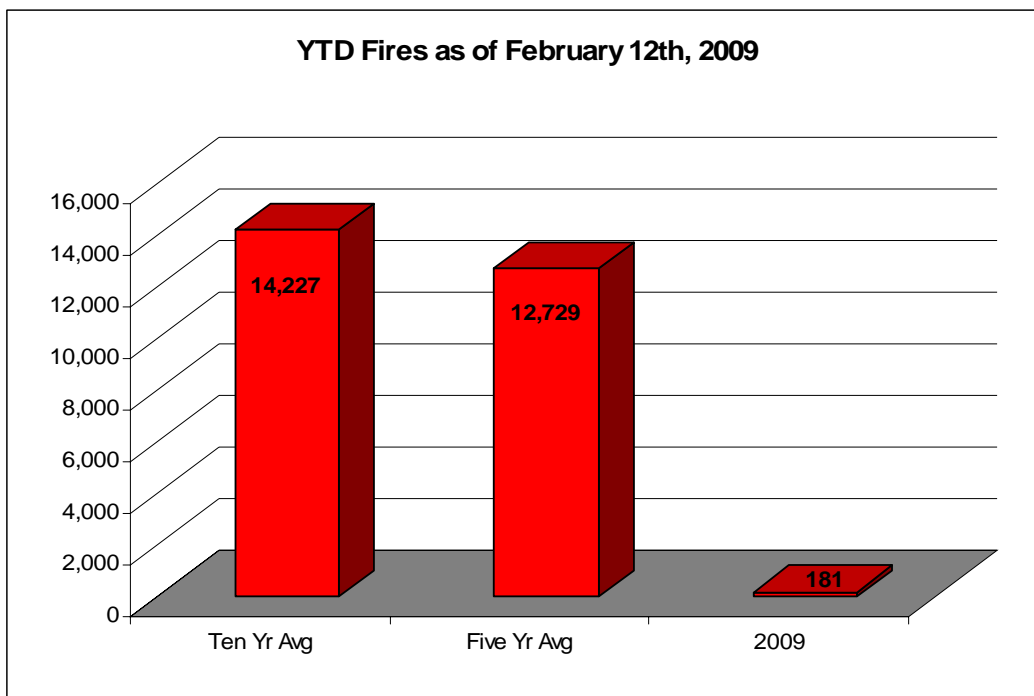
**EA Resource Status**

[Link to view daily ROSS requests](#)

Wisconsin State tractor plows and engines were ordered for Texas over the past weekend.

**YTD Activity**

Agency	Human Fires		Lighting Fires		Year to date	
	Fires	Acres	Fires	Acres	Fires	Acres
<b>BIA</b>	0	0	0	0	0	0
<b>DDQ</b>	2	5	0	0	2	5
<b>FWS</b>	1	0	0	0	1	0
<b>NPS</b>	0	0	0	0	0	0
<b>ST</b>	140	4169	0	0	140	4169
<b>FS</b>	38	1209	0	0	38	1209
<b>TOTALS</b>	<b>181</b>	<b>5383</b>	<b>0</b>	<b>0</b>	<b>181</b>	<b>5383</b>



#### Helpful web links:

- **Eastern Area Fuels Fire Danger:** [http://gacc.nifc.gov/eacc/predictive/fuels\\_fire-danger/fuels\\_fire-danger.htm](http://gacc.nifc.gov/eacc/predictive/fuels_fire-danger/fuels_fire-danger.htm)
- **National Hurricane Center updates:** <http://www.nhc.noaa.gov/>
- **Eastern Area Coordination Center:** <http://gacc.nifc.gov/eacc/index.htm>
- **Fire and Fuel Advisories:** [http://www.nifc.gov/nicc/predictive/fuels\\_fire-danger/fuels\\_advisories.htm](http://www.nifc.gov/nicc/predictive/fuels_fire-danger/fuels_advisories.htm).
- **Fire Danger Pocket Cards:** <http://fam.nwcg.gov/fam-web/pocketcards/>
- **Large fire Map of active incidents:** [http://activefiremaps.fs.fed.us/lq\\_fire2.php](http://activefiremaps.fs.fed.us/lq_fire2.php)
- **Six Minutes for Safety:** [http://www.nifc.gov/sixminutes/dsp\\_sixminutes.php](http://www.nifc.gov/sixminutes/dsp_sixminutes.php)
- **Aviation Safety Alerts:** [http://www.fs.fed.us/fire/av\\_safety/safety\\_alerts/index.html](http://www.fs.fed.us/fire/av_safety/safety_alerts/index.html)

Slow down! Your family will be waiting for you.