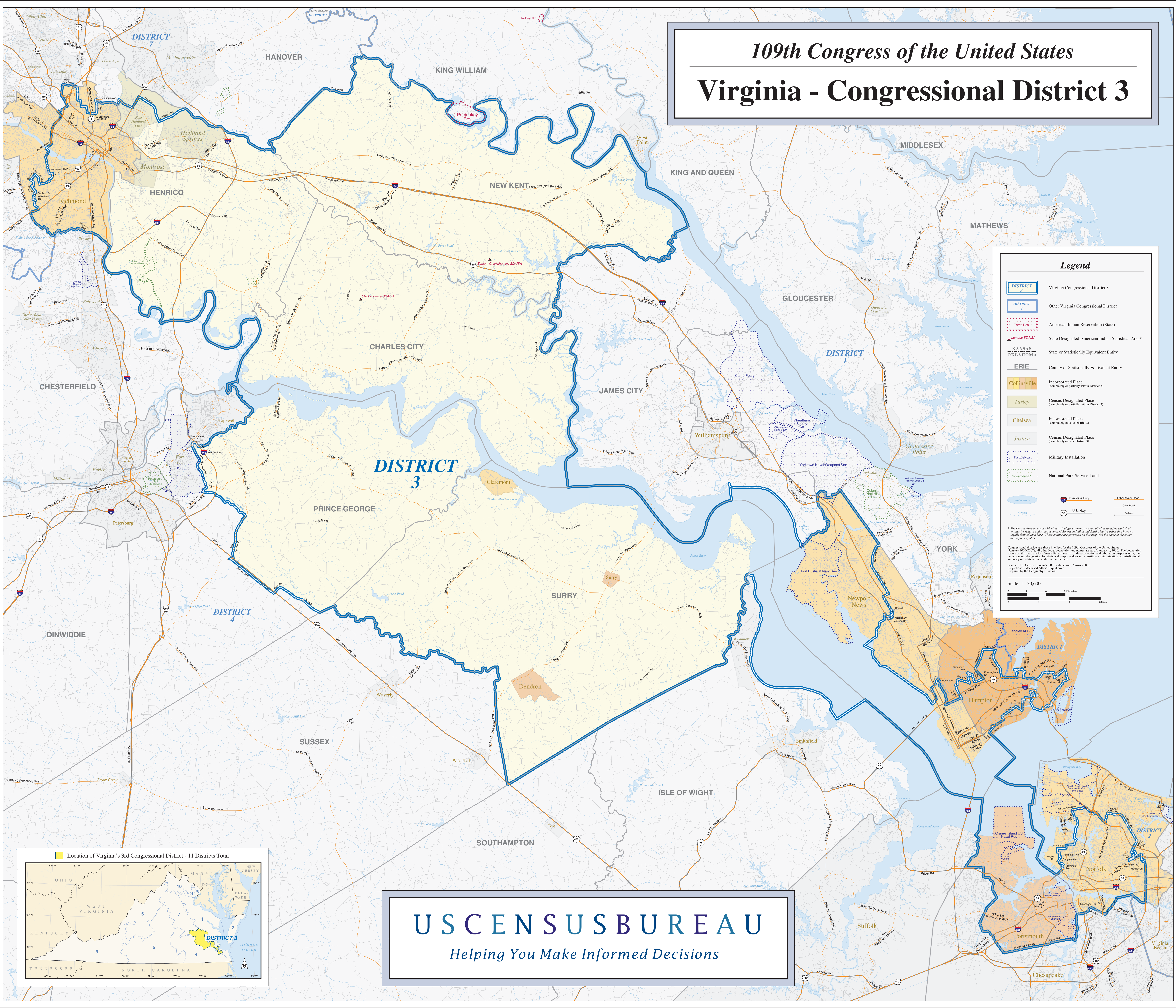


109th Congress of the United States

Virginia - Congressional District 3



Legend

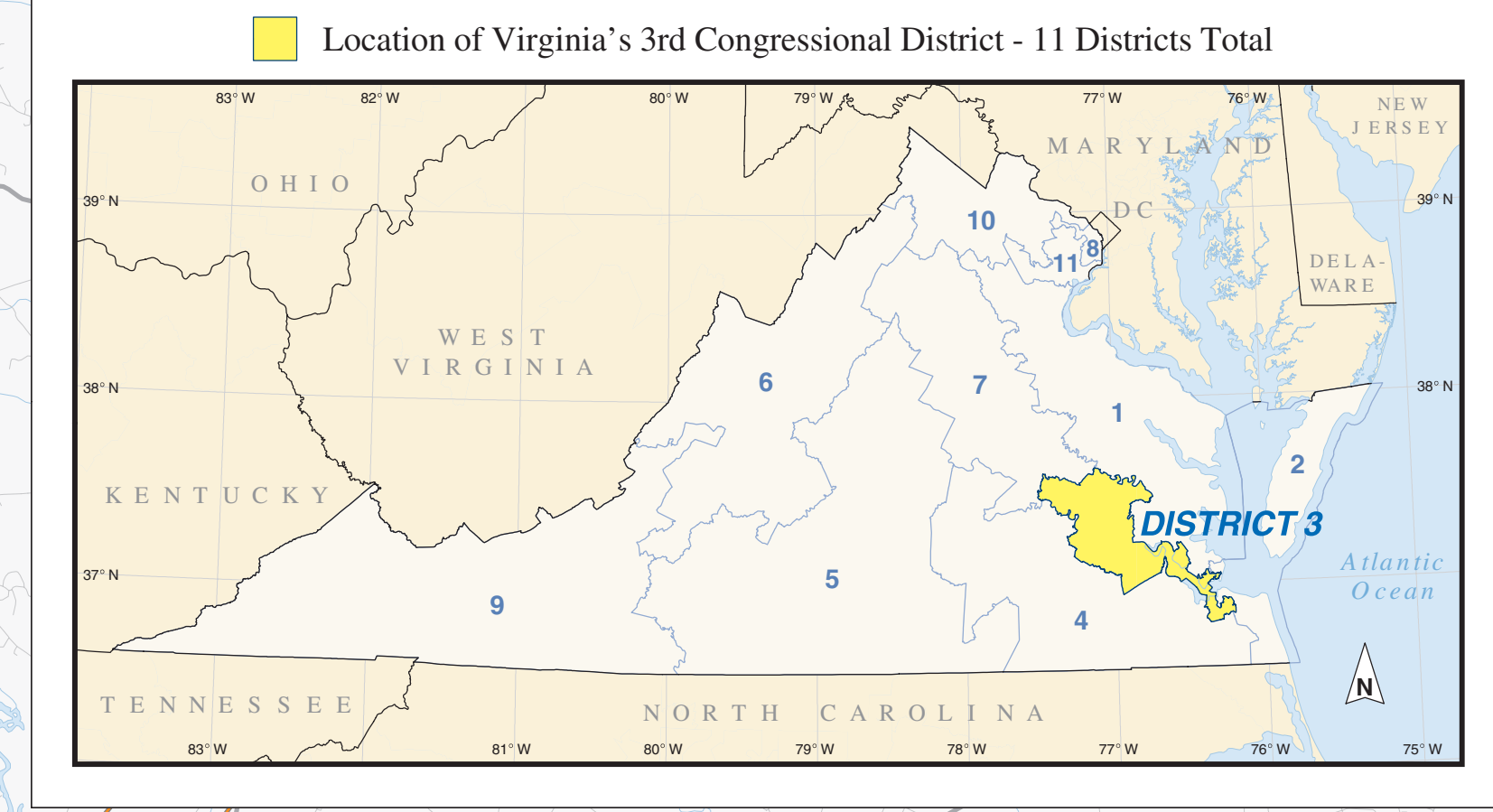
- DISTRICT 3 Virginia Congressional District 3
- DISTRICT 2 Other Virginia Congressional District
- Terra Plena American Indian Reservation (State)
- Lumbee SDAISA State Designated American Indian Statistical Area*
- KANSAS OKLAHOMA State or Statistically Equivalent Entity
- ERIE County or Statistically Equivalent Entity
- Collinsville Incorporated Place (completely or partially within District 3)
- Turley Census Designated Place (completely or partially within District 3)
- Chelsea Incorporated Place (completely inside District 3)
- Justice Census Designated Place (completely inside District 3)
- Fort Belvoir Military Installation
- Vinsonville NP National Park Service Land

Scale: 1:120,600

* The Census Bureau works with other tribal governments or state officials to define statistical entities for federal and state purposes. American Indian and Alaska Native tribes that have no legally defined land base. These entities are portrayed on this map with the name of the entity and a pink symbol.

Congressional districts are in effect for the 109th Congress of the United States (January 2005-2007); all other legal boundaries and names are as of January 1, 2000. The boundaries shown on this map are for Census Bureau statistical data collection and tabulation purposes only; their depiction and description for statistical purposes does not constitute a determination of jurisdictional authority or rights of ownership or entitlement.

Source: U.S. Census Bureau's TIGER database (Census 2000) Prepared by Statistics & Information Division



USCENSUSBUREAU
Helping You Make Informed Decisions