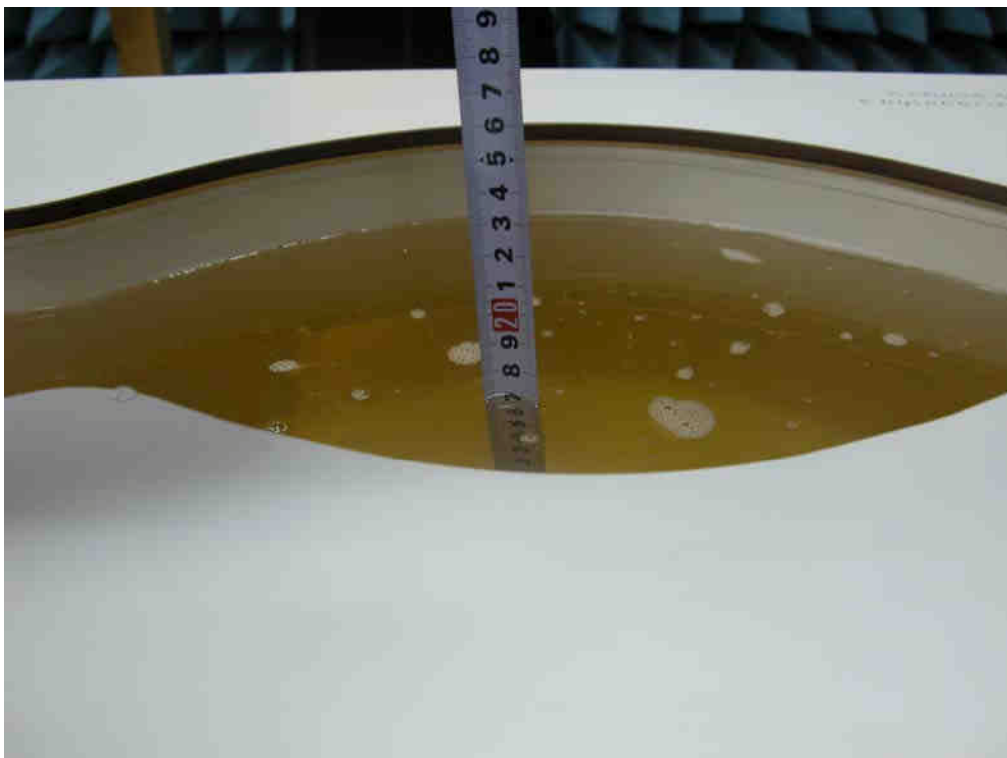


**ANNEX B TEST LAYOUT**



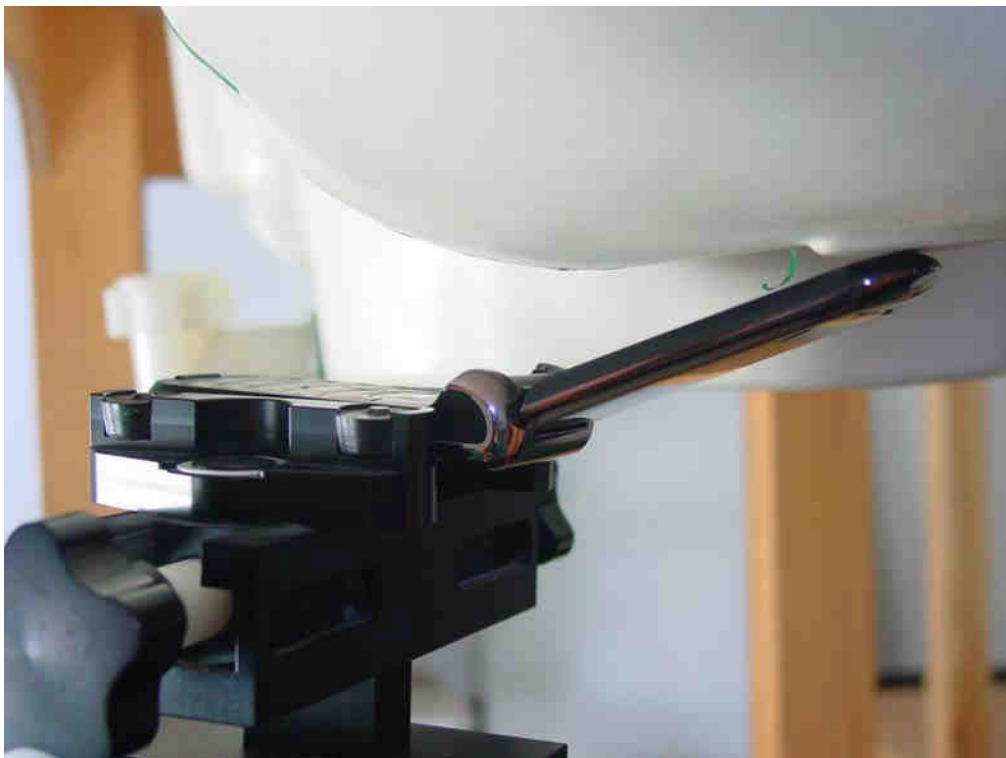
**Picture B1: Specific Absorption Rate Test Layout**



**Picture B2: Liquid depth in the Flat Phantom (835 MHz)**



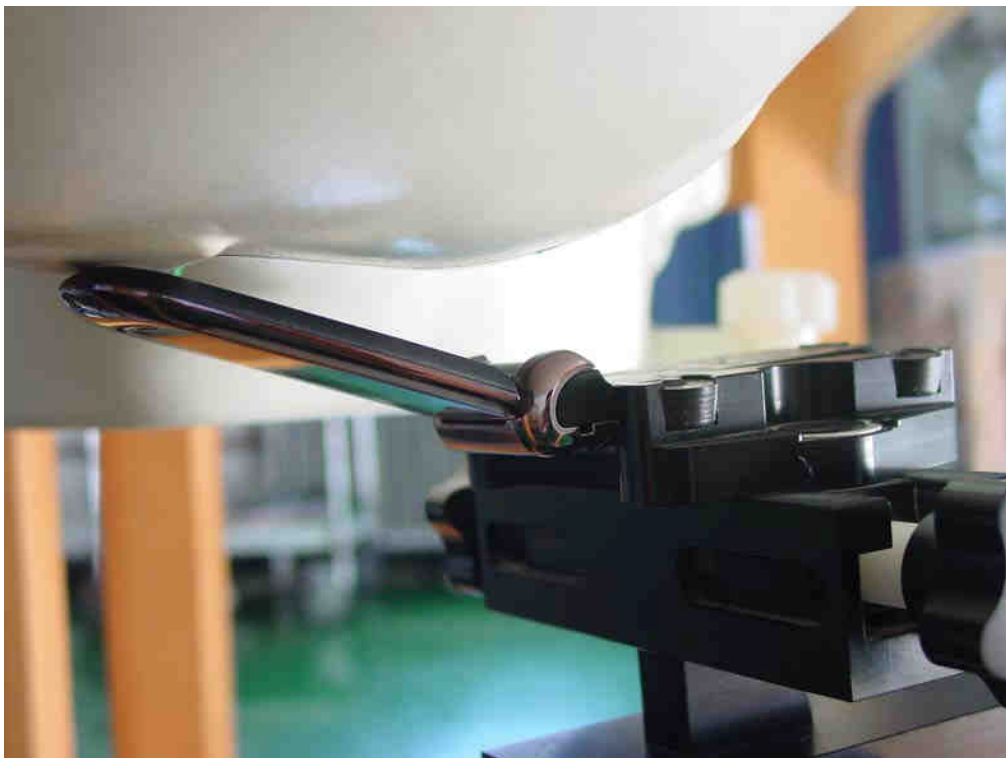
**Picture B3: Left Hand Touch Cheek Position**



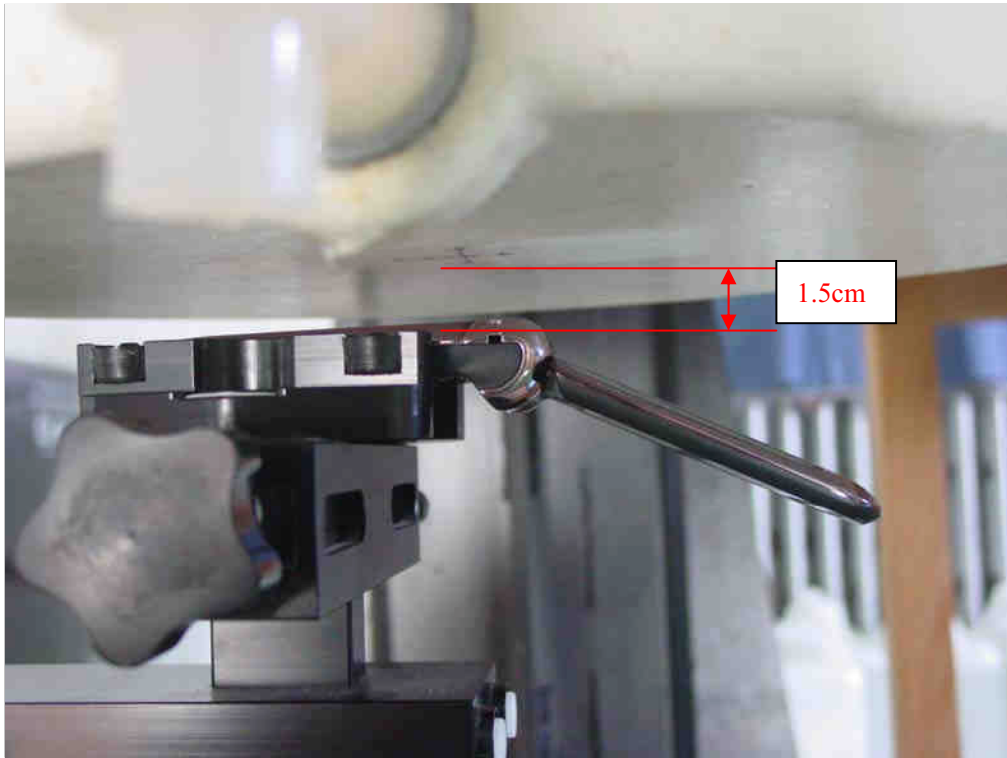
**Picture B4: Left Hand Tilt 15° Position**



**Picture B5: Right Hand Touch Cheek Position**



**Picture B6: Right Hand Tilt 15° Position**



**Picture B7: Body-worn Position (toward ground, the distance from handset to the bottom of the Phantom is 1.5cm)**