



U.S. Department
of Homeland Security
**United States
Coast Guard**

**LOCAL NOTICE TO MARINERS
WEEKLY EDITION**

District: 7

Week: 13/07

Issued by:
Commander, Seventh Coast Guard District
909 SE 1st Avenue, Miami, Florida 33131-3050
Telephone (305) 415-6730 or (305) 415-6751
Fax (305) 415-6757
Office hours 7:30 a.m. - 4:00 p.m., M-F

BROADCAST NOTICE TO MARINERS

Navigation information having been of immediate concern to the Mariner, and promulgated by the following broadcasts, has been incorporated in this notice when still effective:

- CCGD7 (D7) BNM 567-07 to 589-07
- SECTOR CHARLESTON (CHA) BNM 054-07 to 065-07
- SECTOR JACKSONVILLE (MAY) BNM 068-07 to 080-07
- SECTOR MIAMI (MIA) BNM 139-07 to 147-07
- SECTOR KEY WEST (KEY) BNM 049-07 to 050-07
- SECTOR ST.PETERSBURG (STP) BNM 290-07 to 290-07
- SECTOR SAN JUAN (GAN) BNM 018-07 to 018-07

NOTES: (1) Unless otherwise indicated, missing and destroyed structures are presumed to be in the immediate vicinity, mariners should proceed with caution.

(2) The Local Notice to Mariners consists of a Weekly Edition.

(3) Inquiries, Published Articles or Information: (e-mail) Bernard.A.Dukes@uscg.mil

REFERENCES: Light List, Vol. III, Atlantic and Gulf Coasts, 2006 Edition (COMDTPUB P16502.3).
U.S. Coast Pilot 4, Atlantic Coast: Cape Henry to Key West, 2006 (38th Edition).
U.S. Coast Pilot 5, Atlantic Coast: Gulf of Mexico, Puerto Rico and Virgin Islands 2006 (34rd) Edition.

The Local Notice to Mariners is available online at:
<http://www.navcen.uscg.gov/lnm/d7>

The United States Coast Guard Navigation Information Service (NIS)

The United States Coast Guard Navigation Information Service (NIS), operated by the USCG Navigation Center, is staffed 24 hours a day, 7 days a week. The NIS provides information on the current operational status, effective policies, and general information for GPS, DGPS, and LORAN-C. The NIS also disseminates Safety Broadcasts (BNM), Local Notice to Mariners (LNM), and the latest Notice Advisory to Navstar Users (NANU). NANU notices can be obtained via email subscription through the USCG Navigation Center website: <http://www.navcen.uscg.gov/gps/status/default.htm>. In addition, the NIS investigates all reports of degradation or loss of GPS, DGPS or LORAN service. Mariners are encouraged to report all degradation or loss of radio navigation services to the NIS via any of the following: Phone: (703) 313-5900, Email: webmaster@smtp.navcen.uscg.mil, or on the World Wide Web at: <http://www.navcen.uscg.gov>

REPORT DISCREPANCIES IN AIDS TO NAVIGATION TO THE NEAREST COAST GUARD UNIT

SAFE BOATING AND SEAMANSHIP PROGRAMS: (See Enclosure Section)

ABBREVIATIONS

A through I

ACOE - Army Corps of Engineers
ADRIFT - Buoy Adrift
AICW - Atlantic Intracoastal Waterway
B - Buoy
BKW - Breakwater
B - Refer to Light List
BNM - Broadcast Notice to Mariner
CG - Refer to Light List
CHAN - Channel
CGD - Coast Guard District
CR - Refer to Light List
C/O - Cut Off
CONT - Contour
CONSTR - Construction
CRK - Creek
CONST - Construction
DBN - Daybeacon
DBD/DAYBD - Dayboard
DBN/DEST - Daybeacon Destroyed
DBN IMCH - Daybeacon Improper Characteristic
DISCON - Discontinued
DMGD - Daybeacon Damaged
EST - Established Aid
EVAL - Evaluation
EXT - Extinguished
FL - Flashing
FS - Fog Signal
HAZ - Hazard to Navigation
HBR - Harbor
HOR - Horizontal Clearance
HT - Height
ICW - Intracoastal Waterway
IMCH - Improper Characteristic
INL - Inlet
INOP - Not Operating
ISL - Islet
-

K through M

KBG - Refer to Light List
KBG-I - Refer to Light List
KBR - Refer to Light List
KBR-I - Refer to Light List
KBW - Refer to Light List
KGB - Refer to Light List
KGB-I - Refer to Light List
KGR - Refer to Light List
KGR-I - Refer to Light List
KGW - Refer to Light List
KGW-I - Refer to Light List
KRB - Refer to Light List
KRB-I - Refer to Light List
KRG - Refer to Light List
KRG-I - Refer to Light List
KRW - Refer to Light List
KWB - Refer to Light List
KWB-I - Refer to Light List
KWG - Refer to Light List
KWG-I - Refer to Light List
KWR - Refer to Light List
KWR-I - Refer to Light List
LAT - Latitude
LB - Lighted Buoy
LBB - Lighted Bell Buoy
LHB - Lighted Horn Buoy
LGB - Lighted Gong Buoy
LONG - Longitude
LNM - Local Notice to Mariners
LT - Light
LT CONT - Light Continuous
LWB - Lighted Whistle Buoy
LWP - Left Watching Properly
MISS - Missing
MR - Refer to Light List
MR-I - Refer to Light List

N through Z

NB - Refer to Light List
N/C - Not Charted
ND - Refer to Light List
NG - Refer to Light List
NGA - National Geospatial-Intelligence Agency
NL - Refer to Light List
NO - Number
NOS - National Ocean Service
NR - Refer to Light List
NW - Refer to Light List
NW - Notice Writer
NY - Refer to Light List
OBSCU - Obscured
OBST - Obstruction
OBSTR - Obstruction
PRIV - Private Aid
RBN - Radio Beacon
REBUILT - Aid Rebuilt
RECOVERED - Aid Recovered
RED - Red Buoy
REDINT - Reduced Intensity
RRL - Range Rear Light
RELIGHTED - Aid Relighted
RELOC - Relocated
RESET ON STATION - Aid Reset on Station
RFL - Range Front Light
RIV - River
SEC - Section
SG - Green Square
SG-SY - Green Square with Yellow Square
SHL - Shoaling
SND - Sound
TEMP - Temporary Aid Change
St M - Statute Mile
TR - Red Triangle
TRLB - Temporarily Replaced by Lighted Buoy
TRLT - Temporarily Replaced by Light
TR-TY - Red Triangle with Yellow Triangle
TRUB - Temporarily Replaced by Unlighted Buoy

Additional Abbreviations Specific to this LNM Edition: None

SECTION I - SPECIAL NOTICES

This section contains information of special concern to the Mariner.

121.5/243 MHZ EMERGENCY POSITION INDICATING RADIO BEACON (EPIRB) USE PROHIBITED

Mariners are advised that as of January 1, 2007 the operation of Class A, B, and S EPIRBs (Emergency Position Indicating Radio Beacons) is PROHIBITED. Refer to 47 CFR Parts 80.1051 through 80.1059. These FCC regulations apply to EPIRBs that transmit a distress signal to satellites on the 121.5 / 243 MHz frequencies. EPIRB owners must check the class or type of their beacons carefully, since both the illegal 121.5 MHz EPIRBs and the authorized 406 MHz EPIRBs contain a 121.5 MHz homing signal which is used for direction finding purposes. Also, 121.5 MHz Man Overboard Devices are not affected by these FCC regulations and are still legal for use.

Owners of Class A, B, or S 121.5 / 243 MHz EPIRBs are encouraged to replace these beacons with Category I or Category II 406 MHz beacons as soon as possible. When taking obsolete beacons out of service, owners must remove and properly dispose of batteries to prevent future false alerts from occurring.

Beacon owners in the U.S. are required by law to register their 406 MHz beacons with NOAA at: www.beaconregistration.noaa.gov or by calling 1-888-212-SAVE. This registration information must be verified every two years and updated whenever changes are made. All beacon owners are reminded to carefully follow their specific beacon manufacturer-s instructions when conducting tests of beacons to prevent unnecessary false alerts.

LNM: 13/07

DGPS ISABELLA, PUERTO RICO SITE UNUSABLE

DGPS Isabella Broadcast site is unusable as of March 27, 2007 until further notice.
Address all inquiries to USCG NAVCEN DGPS, East Operations Center, (703) 313-5902.

U.S. NAVY, SOUTH FLORIDA TESTING FACILITY(SFTF): SURFACE AND SUBMERGED RANGE TESTING

The United States Navy, South Florida Testing Facility (SFTF) Requests that a Notice To Mariners be issued for offshore Fort Lauderdale, Florida, for a surface and submerged range testing. The testing will be performed during the time period from April 4, 2007 to April 8, 2007. The hours of testing will be from 0600 to 2330 local. The testing will be conducted in the following areas bounded by the following coordinates.

ERMA test

Corner Point Latitude Longitude

NW 26° 5.25' N 80° 5.6' W

SW 26° 1.29' N 80° 5.6' W

NE 26° 5.25' N 80° 2.745' W

SE 26° 1.29' N 80° 2.745' W

The testing involves surface and submerged Navy assets working in conjunction with commercial surface assets. All vessels are asked to stay well clear of both the Navy and commercial assets.

For further information please contact Mr. Anthony Bush, Range Operations, NAVSEA Warfare Center Det. Dania, Florida (954) 926-4032 office, (954) 926-4031 fax, (954) 290-9300 cell.

NORTH ATLANTIC RIGHT WHALES WARNING: Updated Version.

From December to March the coastal waters between Altamaha Sound, GA, and Sebastian Inlet, FL, are used as calving grounds by the severely endangered North Atlantic Right Whale. This is the world-s only known calving ground for this species. Right Whales are the rarest whales in the world and are protected under law from disturbance or injury by the endangered species act of 1973, and the Marine Mammal Protection act of 1972. Right Whales, especially females and their calves, are slow swimmers and frequently lie at the surface. This behavior makes them vulnerable to collisions with ships, which are a significant source of mortality. Vessels operating within 25 miles of shore between 31-27N and 29-50N and within five miles of shore from 29-50N and 28-00N should take precautions to avoid collisions with Right Whales.

For Complete Updated Text of Message See Enclosure (1).

LNM: 44/06

SPECIAL WARNING NUMBER 123, SOMALI.

Due to continuing conditions of armed conflict and lawlessness in Somalia and waters off its coast. Mariners are advised to avoid the Port of Mogadishu and to remain at least 200 nautical miles distant from the Somali Coast.

For Complete Text of Message see Enclosure (2).

LNM: 47/05

OPERATION "ON GUARD"

U. S. Coast Guard Marine Safety Office Miami announces Operation "ON GUARD". This operation is designed to employ Coast Guard - active duty, reserve and auxiliary, Federal Bureau of Investigation, US Customs Service, US Immigration and Naturalization Service and the Florida Department of Law Enforcement personnel in response to suspected terrorist activity at the waterfront facilities of the United States.

For Complete Text of Message See Enclosure (3).

NAVAL PROTECTION ZONES

The U. S. Coast Guard has established protection zones around U. S. Naval vessels within U. S. navigable waters. Naval vessels protection zones are established within 100 yards of any U. S. Naval vessel. This includes any vessel owned, operated, chartered, or leased by the U. S. Navy or under the operational control of the U. S. Navy.

NAVAL PROTECTION ZONES

Vessels within 500 yards of a U.S. Naval vessel shall operating at the minimum speed necessary to maintain a safe course and proceed as directed by the official patrol. Mariners may contact the U.S. Coast Guard on VHF Channel 16 regarding this message.

DATES OF LATEST EDITIONS, NAUTICALS CHARTS AND MISCELLANEOUS MAPS

The Dates of Latest Editions, Nautical Charts and Miscellaneous Maps, dated January 1, 2007, published by the National Ocean Service, is available for issue. It may be obtained free by mail from the FAA/National Aeronautical Charting Office, Distribution Division AVN-530, 10201, Good Luck Road, Glenn Dale, MD, 20769-9700, by telephone at 1-800-638-8972 or from your local authorized nautical chart sales agent. This is a quarterly publication listing the most recent editions of nautical charts, miscellaneous maps and publications relating to navigation, weather, etc. with brief descriptions and up-to-date prices for most of the publications listed. Much of this information may also be obtained online at: <http://chartmaker.ncd.noaa.gov/mcd/dole.htm>

LNM: 05/07

INTERNET DELIVERY OF U.S. NOTICE TO MARINERS

The National Geospatial-Intelligence Agency (NGA) has changed the way the U.S. Notice to Mariners are made available to the maritime community. NGA will continue to provide U.S. Notice to Mariners to the public but only in the digital version exclusively via the Internet.

U.S. COAST PILOT 4, ATLANTIC COAST: CAPE HENRY, VA TO KEY WEST, FL

PUBLICATION - National Ocean Service - U.S. Coast Pilot 4, Atlantic Coast: Cape Henry, VA to Key West, FL, 2006, 38th Edition, is ready for issue and may be obtained from:

Federal Aviation Administration
National Aeronautical Charting Office
Distribution Division, AVN - 530
10201 Good Luck Road
Glenn Dale, MD 20769-9700

and authorized agents of the National Ocean Service. Price \$26.00. The 2006 Edition cancels the preceding 2005 Edition. All corrections to the previous edition issued in Notices to Mariners are incorporated in this edition.

Mariners are encouraged to use the convenient -RECORD OF CHANGES- form on Page VI of this book. All Coast Pilot changes published in the U.S. Coast Guard Local Notice to Mariners, National Geospatial-Intelligence Agency Notice to mariners, and on the Internet at: <http://nauticalcharts.noaa.gov/nsd/cpdownload.htm>. are serially numbered (i.e., Changes No. 1, Changes No. 2. etc.) to assist you in tracking the changes.

SECTION II - DISCREPANCIES

This section lists all reported and corrected discrepancies related to Aids to Navigation in this edition. A discrepancy is a change in the status of an aid to navigation that differs from what is published or charted.

DISCREPANCIES (FEDERAL AIDS)

LLNR	Aid Name	Status	Chart No.	BNM Ref.	LNM St	LNM End
720	St Lucie Entrance Lighted Buoy 2	OFF STA	11474	068-07 MIA	07/07	
805	Port Everglades Spoil Bank East Daybeacon	TRUB	11470	506-05 MIA	47/05	
885	Miami Anchorage Buoy B	SINKING	11468	142-07 MIA	12/07	
950	Elbow Reef Light 6	TRLB	11451	301-05 KWT	39/05	
970	Davis Reef Light 14	TRUB	11464	106-06 KWT	39/05	
1005	Big Pine Shoal Light 22	TRLB	11446	567-05 KWT	40/05	
1010	Looe Key Light 24	TRLB	11442	187-06 KWT	39/05	
1080	Twenty-Eight Foot Shoal Light	TRLB/RAC INOP	11439	174-06 KWT	40/05	
1085	Halfmoon Shoal Light WR2	TRLB	11439	112-06 KWT	30/05	

1090	Rebecca Shoal Light	TRLT/DBN DMGD/DBD DEST	11439	113-06 KWT	42/05
1190	New Ground Rocks Light	DBD DEST	11439	373-05 KWT	42/05
1230	Cape Romano Shoals Light	TRLB	11430	058-06 STP	47/05
1310	Gasparilla Island Light	LT IMCH	11425	249-07 STP	11/07
1625	Cedar Keys Northwest Channel Approach Light 2	TRLB	11408	0673-06 STP	19/06
1645	Horseshoe Beach Approach Light 2	TRLB/LT EXT/DBN DEST	11407	0859-06 STP	25/06
1920	Winyah Bay Channel Lighted Buoy 9	REDUCED INT	11532	380-06 CHA	51/06
2385	Fort Sumter Range Front Light	REDUCED INT	11523	065-07 CHA	13/07
4275	Beaufort River Range B Rear Light	DBD DEST	11507	019-07 CHA	03/07
4700	Calibogue Sound Entrance Lighted Buoy 6	TRLB	11512	059-07 CHA	11/07
5740	Ossabaw Sound Preferred Channel Buoy N	TRUB	11511	332-06 CHA	42/06
5750	Ossabaw Sound North Channel Buoy 7	SINKING	11511	048-07 CHA	10/07
6975	Kings Bay South Degaussing Range Front Daybeacon	TRLB	11503	443-06 JAX	51/06
7120	St Johns Bar Cut Range Rear Light	OBSTRUCTED	11491	054-07 JAX	07/07
7595	Chaseville Middle Ground Shoal Daybeacon N	TRUB	11491	31-07 JAX	04/07
7600	Chaseville Middle Ground Shoal Daybeacon S	TRUB	11491	031-07 JAX	04/07
8490	Mount Royal Daybeacon 60	TRUB	11487	057-07 JAX	07/07
9210	Butchers Bend Cutoff Daybeacon 111	TRUB	11498	293-06 JAX	35/06
9995	St Lucie Entrance Lighted Buoy 2	OFF STA	11474	068-07 MIA	07/07
10000	St Lucie Inlet Buoy 4	OFF STA	11472	047-07 MIA	05/07
10135	St Lucie Inlet Buoy 7	OFF STA	11472	063-07 MIA	05/07
10212.5	Singer Island Channel Daybeacon 7	DBD DMGD	11472	145-07 MIA	13/07
10303	Hillsboro Inlet Entrance Daybeacon 5	TRUB	11467	571-06 MIA	45/06
10330	Port Everglades Light 4	LT EXT	11470	157-07 MIA	13/07
10465	Miami Main Channel Entrance Range Rear Light	DBD DEST	11468	NA	50/06
10495	Miami Main Channel Lighted Buoy 6	LT EXT	11468	147-07 MIA	13/07
10515	Miami Main Channel Lighted Buoy 8	OFF STA	11468	139-07 MIA	12/07
10850.5	Biscayne Channel Daybeacon 13	TRUB		NA	50/06
11185	Angelfish Creek Daybeacon 1	TRLB	11464	017-07 KWT	52/06
11200	Angelfish Creek Daybeacon 3A	TRLB	11463	613-06 KWT	48/06
11500	Basin Hills Light 31BH	LT EXT	11451	042-07 KWT	11/07
12560	Little Money Key Shoal Daybeacon	DBN DEST	11449	004-07 KWT	02/07
12655	Big Spanish Channel Daybeacon 52	TRLB	11448	150-06 KWT	32/06
13610	East Turtle Shoal Light 45	TRUB	11449	566-05 KWT	41/05
13815	Boot Key Harbor Daybeacon 21	TRUB/DBN DEST	11449	207-06 KWT	46/06
15185	Key West Northwest Channel Lighted Buoy 3	TRLB	11441	0527-07 KWT	13/07
15220	Key West Northwest Channel Light 12	TRLB	11441	202-06 KWT	46/06
15365	Calda Channel Daybeacon 11	TRUB	11441	403-05 KWT	45/05
15440	Dry Tortugas Southeast Channel Light 1	LT EXT/DBN DEST	11438	166-04 KWT	34/04
15450	Dry Tortugas Southeast Channel Light 3	TRLB	11438	285-05 KWT	41/05
15455	Dry Tortugas Southeast Channel Daybeacon 4	TRUB	11438	107-06 KWT	37/05
15505	Dry Tortugas Southwest Channel Daybeacon 3	OFF STA /TRLB	11438	517-05 KWT	45/05
15660	East Cape Daybeacon 4	DBD DEST	11433	033-07 KWT	09/07
15705	Flamingo Channel Daybeacon 14	LT EXT	11433	034-07 KWT	09/07
15705	Flamingo Channel Daybeacon 14	TRUB	11433	267-04 MIA	24/04
15835	Whitewater Bay Daybeacon 36	DBD DMGD	11433	206-06 MIA	16/06
16030	Indian Key Pass Light 15	TRLB	11430	031-07 STP	03/07
16175	Barron River Channel Daybeacon 35	TRLB	11430	NA	08/07
17415	Big Marco Pass-Gordon Pass Daybeacon 65	TRUB	11430	NA	42/06

17515	Gordon Pass Channel Daybeacon 12	TRUB	11430	NA	11/07
17520	Gordon Pass Channel Light 13	TRLB	11430	103-07 STP	02/07
17595	Naples Bay Channel Daybeacon 25	TRUB/DBN DEST	11430	1609-06 STP	52/06
17600	Naples Bay Channel Daybeacon 26	TRLB	11430	1322-06 STP	42/06
17995	San Carlos Bay Daybeacon 1	TRUB	11427	286-07 STP	12/07
18090	Matanzas Pass Channel Daybeacon 3	TRLB	11427	1416-06 STP	45/06
18095	Matanzas Pass Channel Daybeacon 4	TRUB	11427	1598-06 STP	52/06
18275	Matanzas Pass Channel Daybeacon 18	TRUB	11427	154-07 STP	07/07
18295	Matanzas Pass Channel Daybeacon 26	TRUB	11427	NA	07/07
19995	Cape Haze Shoal Light 6	REDUCED INT	11425	298-07 STP	12/07
21915	Manatee River Daybeacon 11	TRUB	11415	208-07 STP	09/07
22355	Mullet Key Channel Range Front Light	DBD DMGD	11415	0899-06 STP	27/06
24715.5	Point Pinellas Channel Light 5	TRLB	11415	1535-06 STP	50/06
25690	Clearwater Pass Channel Light 4	TRLB	11411	303-07 STP	13/07
28370	Homosassa Bay Light 4	TRLB	11409	204-07 STP	04/07
28590	Homosassa River Daybeacon 61	DBN DEST	11409	325-07 STP	13/07
28635	Homosassa River Daybeacon 69A	TRUB	11409	0331-06 STP	10/06
29920	Cedar Keys Northwest Channel Approach Light 2	TRLB	11408	0673-06 STP	19/06
30360	Horseshoe Beach Approach Light 2	TRLB/LT EXT/DBN DEST	11407	0859-06 STP	25/06
30630	Keaton Beach Light 8	DBD DEST	11407	299-07 STP	13/07
31160	Las Cucarachas Light	TRLT	25667	085-07 SJN	10/07
32020	Bahia de Tallaboa Lighted Buoy 5	SINKING	25681	NA	10/07
33375	Hicacal Beach Range Front Light	LT IMCH	26230	NA	12/07
33390	Guantanamo Bay Entrance Lighted Buoy 2	SINKING	26230	NA	12/07
33410	St Nicolas Point Channel Light 6	TRUB	26230	067-05 GAN	11/05
33505	Deer Point Channel Light 2	DBD DEST	26230	NA	12/07
33515	Deer Point Channel Light 4	DBD DEST	26230	NA	12/07
33535	Mud Island Light 1	TRUB	26230	068-05 GAN	11/05
34010	Little River-Winyah Bay Light 84	LT EXT	11534	065-07 CHA	13/07
34015	Little River-Winyah Bay Light 85	DBD DEST	11534	067-07 CHA	13/07
35070	South Edisto River Range A Front Light	REDUCED INT	11517	415-05 CHA	50/05
35205.2	Ashepoo-Coosaw Cutoff Daybeacon 185	TRUB	11517	NA	11/07
35535	Beaufort River Range B Rear Light	DBD DEST	11507	019-07 CHA	03/07
36785	Old Teakettle Creek Light 173	DBN DMGD	11507	364-06 CHA	48/06
36820	Doboy Island Light 182	TRUB	11507	052-07 CHA	10/07
37290	Jekyll Creek Jetty Range Front Light	DBD DEST	11489	047-07 CHA	10/07
37355	Jekyll Creek Daybeacon 24	TRUB	11489	271-06 CHA	36/06
39061	Matanzas River Daybeacon 7	TRUB	11485	399-06 JAX	47/06
39470	Matanzas River Daybeacon 66	TRUB	11485	073-07 JAX	11/07
40195	Halifax River Daybeacon 44	TRUB	11485	174-06 JAX	20/06
40615	Ponce de Leon Cut Junction Daybeacon	TRUB	11485	493-05 JAX	51/05
40625	New Smyrna Beach Light 21	TRLB	11485	406-06 JAX	49/06
40660	New Smyrna Beach Daybeacon 32	TRUB	11485	455-06	01/07
40845	New Smyrna Beach Daybeacon 62	TRUB/DBN DEST	11485	437-06 JAX	51/06
40960	Mosquito Lagoon Daybeacon 14	TRUB	11485	348-06 JAX	41/06
40970	Mosquito Lagoon Light 16	TRLB	11485	088-07 JAX	13/07
41025	Mosquito Lagoon Daybeacon 30	TRUB	11485	456-06 JAX	02/07
41105	Indian River (North Section) Daybeacon 2	TRUB	11485	077-07 JAX	11/07
41190	Indian River (North Section) Daybeacon 23	TRUB	11485	255-06 JAX	29/06
41225	Titusville Yacht Basin Daybeacon 4	TRUB	11485	063-07 JAX	08/07
41725	Banana River North Daybeacon 13A	TRLB	11478	309-06 JAX	37/06
42225	Indian River (North Section) Light 85	TRLB	11485	028-07 JAX	05/07

42330	Indian River (North Section) Daybeacon 98	TRUB	11472	434-06 JAX	50/06
42335	Indian River (North Section) Daybeacon 99	TRUB	11472	400-06 JAX	47/06
42595	Banana River Daybeacon 25	DBN DEST	11481	NA	13/07
42605	Banana River Daybeacon 27	TRUB	11481	087-07 JAX	13/07
43545	Indian River (South Section) Daybeacon 58	TRUB	11472	621-06 MIA	48/06
43690	Indian River (South Section) Daybeacon 69	TRUB	11472	116-07 MIA	10/07
45025	Indian River (South Section) Daybeacon 179	DBD DEST	11472	156-07 MIA	13/07
46415	Lake Worth Creek Daybeacon 19	DBD DEST	11472	NA	12/07
46515	Lake Worth North Daybeacon 32	DBN DEST	11472	NA	13/07
46985	Lake Worth South Daybeacon 40	TRLB	11467	077-07 MIA	07/07
47130	Lake Wyman Daybeacon 59	TRUB	11467	143-07 MIA	12/07
47235	Pompano Beach Light 76	DBN IMCH	11467	153-07 MIA	13/07
50710	St Lucie River Daybeacon 8	TRUB	11472	270-06 MIA	21/06
50715	St Lucie River Daybeacon 10	TRUB	11472	NA	13/07
50895	St Lucie River (North Fork) Daybeacon 10	TRUB	11428	146-07 MIA	13/07
51270	Clewiston Channel (Rt 1B) Daybeacon 4	TRUB	11428	547-06 MIA	44/06
51285	Clewiston Channel (Rt 1B) Daybeacon 7	TRUB	11428	548-06 MIA	43/06
51445	Lake Okeechobee (Rt 2) Daybeacon 13	TRUB	11428	001-06 MIA	45/05
51465	Lake Okeechobee (Rt 2) Daybeacon 19	TRUB	11428	N/A	45/05
51475	Lake Okeechobee (Rt 2) Daybeacon 21	TRUB	11428	020-07 MIA	03/07
51475	Lake Okeechobee (Rt 2) Daybeacon 21	TRUB	11428	673-05 MIA	45/05
51500	Lake Okeechobee (Rt 2) Daybeacon 26	TRUB	11428	002-06 MIA	45/05
51510	Lake Okeechobee (Rt 2) Daybeacon 28	TRUB	11428	N/A	45/05
51535	Lake Okeechobee (Rt 2) Daybeacon 34	TRUB	11428	003-06 MIA	45/05
51565	Lake Okeechobee (Rt 2) Daybeacon 41	TRUB	11428	004-06 MIA	45/05
51600	Lake Okeechobee (Rt 2) Daybeacon 53	TRUB	11428	N/A	45/05
51605	Lake Okeechobee (Rt 2) Daybeacon 54	TRUB	11428	N/A	45/05
51730	Bacom Point Channel Daybeacon 2	TRUB	11428	N/A	45/05
51750	Bacom Point Channel Daybeacon 6	TRUB	11428	006-06 MIA	02/06
51770	Lake Okeechobee (Rt 2) Daybeacon 80	TRUB	11428	N/A	45/05
51780	Lake Okeechobee (Rt 2) Daybeacon 84	TRLB	11428	N/A	45/05
51785	Lake Okeechobee (Rt 2) Daybeacon 86	TRUB	11428	005-06 MIA	45/05
51795	Lake Okeechobee (Rt 2) Daybeacon 89	TRUB	11428	546-06 MIA	45/05
51800	Lake Okeechobee (Rt 2) Daybeacon 91	TRUB	11428	N/A	45/05
51830	Lake Okeechobee (Rt 2) Daybeacon 98	TRUB	11428	545-06 MIA	45/05
51900	Taylor Creek Daybeacon 3	DBN DEST	11428	013-07 MIA	02/07
54280	Caloosahatchee River Daybeacon 84	TRUB	11427	153-07 STP	08/07
54760	Caloosahatchee River Daybeacon 94	TRLB/DBN DEST	11427	1448-06 STP	46/06
54775	Caloosahatchee River Range Rear Light H/I	DBD DEST	11427	0480-06 STP	16/06
54825	Pine Island Sound Daybeacon 5	TRUB	11427	287-07 STP	12/07
55297	Pine Island Sound Daybeacon 11A	TRUB	11427	036-07 STP	03/07
55605	Pine Island Sound Daybeacon 37	TRUB	11427	319-07 STP	13/07
56105	Pine Island Sound Light 63	TRLB/DBD DEST	11427	1232-06 STP	39/06
56125	Pine Island Sound Light 69	TRLB	11427	NA	44/06
56530	Gasparilla Sound Channel Daybeacon 5	TRUB	11425	NA	09/07
57055	Gasparilla Sound Channel Daybeacon 27	TRLB/DBD DMGD	11425	1613-06 STP	52/06
57550	Lemon Bay Channel Daybeacon 33	TRUB	11425	1501-06 STP	48/06
57895	Venice Inlet-Siesta Key Daybeacon 13	TRUB	11425	NA	11/07
58560	Siesta Key-Tampa Bay Light 12	DBD DEST	11425	200-07 STP	09/07
59325	Siesta Key-Tampa Bay Daybeacon 36	TRUB	11425	1602-06 STP	52/06

60380	Sunshine Skyway Channel Daybeacon 15	TRLB	11411	1596-06 STP	52/06
60525.5	Point Pinellas Channel Light 5	TRLB	11415	1535-06 STP	50/06
61455	Sand Key Daybeacon 23	TRUB	11411	NA	10/07
61570	The Narrows Daybeacon 23	DBN DMGD	11411	NA	10/07
	AUTEC Site 4 Light 2	LT EXT	26312	387-04 D7	09/04
	Cap Haitien Daybeacon 13	DBD DEST	26147	NA	07/06
	Cap Haitien Daybeacon 13	DBN DMGD	26147	NA	07/06

DISCREPANCIES (FEDERAL AIDS) CORRECTED

LLNR	Aid Name	Status	Chart No.	BNM Ref.	LNM St	LNM End
1535	Anclote Anchorage South Entrance Light 1	WATCHING PROPERLY	11411	NA	13/07	13/07
6940	Kings Bay Lower Range E Rear Light	WATCHING PROPERLY	11503	NA	13/07	13/07
7115	St Johns Bar Cut Range Front Light	WATCHING PROPERLY	11491	NA	13/07	13/07
7875	Popo Point Light 18	WATCHING PROPERLY	11492	NA	12/07	13/07
10170	St Lucie Inlet Daybeacon 17	WATCHING PROPERLY	11472	NA	10/07	13/07
14835	Key West Main Channel Lighted Buoy 6	WATCHING PROPERLY	11447	NA	12/07	13/07
19990	Cape Haze Shoal Light 5	WATCHING PROPERLY	11426	NA	12/07	13/07
21190	Peace River Buoy 24	WATCHING PROPERLY	11426	NA	13/07	13/07
21865	Manatee River Light 2	WATCHING PROPERLY	11415	NA	13/07	13/07
26070	Anclote Anchorage South Entrance Light 1	WATCHING PROPERLY	11411	NA	13/07	13/07
26165	Anclote River Entrance Daybeacon 6	WATCHING PROPERLY	11411	NA	44/06	13/07
26190.5	Anclote River Daybeacon 12	WATCHING PROPERLY	11411	NA	04/07	13/07
26320	Anclote River Daybeacon 42	WATCHING PROPERLY	11411	NA	09/07	13/07
30370	Horseshoe Beach Approach Daybeacon 5	WATCHING PROPERLY	11407	NA	25/06	13/07
30395	Horseshoe Beach Channel Daybeacon 12	WATCHING PROPERLY	11407	NA	13/07	13/07
30880	Army Terminal Channel Lighted Buoy 6	WATCHING PROPERLY	25670	NA	11/07	13/07
34545	Winyah Bay-Charleston Harbor Buoy 126	WATCHING PROPERLY	11523	NA	11/07	13/07
34950	Dawho River Buoy 111	WATCHING PROPERLY	11517	NA	10/07	13/07
37715	Kings Bay Lower Range E Rear Light	WATCHING PROPERLY	11503	NA	13/07	13/07
38225	Gunnison Cut Light 61	WATCHING PROPERLY	11489	NA	13/07	13/07
38440	Pablo Creek Light 17	WATCHING PROPERLY	11489	NA	13/07	13/07
39540	Matanzas River Buoy 81D	WATCHING PROPERLY	11485	NA	13/07	13/07
40515	Inlet Harbor Buoy 2	WATCHING PROPERLY	11485	NA	13/07	13/07
45935	Great Pocket Daybeacon 3A	WATCHING PROPERLY	11472	NA	03/07	13/07
46050	Peck Lake Light 19	WATCHING PROPERLY	11472	NA	10/07	13/07
47240	New River Sound Light 3	WATCHING PROPERLY	11470	NA	10/07	13/07
50100	Pelican Bank Southwest Shoal Daybeacon	WATCHING PROPERLY	11463	NA	08/07	13/07
60530	Boca Ciega Bay Light 1	WATCHING PROPERLY	11411	NA	12/07	13/07

DISCREPANCIES (PRIVATE AIDS)

LLNR	Aid Name	Status	Chart No.	BNM Ref.	LNM St	LNM End
425	Georgia Fish Haven Buoy L	DBN DMGD	11480	NA	05/07	
655	Sebastian Inlet North Jetty Light	LT IMCH	11476	N/A	33/04	
774	Boca Raton Inlet South Jetty Light 1	LT EXT	11472	337-04 MIA	01/04	
830	NOAA DATA Lighted Buoy 41002	ADRIFT	11009	039-07 CHA	09/07	
840	NOAA DATA Lighted Buoy 41009	OFF STA	11480	560-04 MAY	37/04	
855	NOAA DATA Lighted Buoy 42036	ADRIFT	11400	1044-05 MIA	29/05	
965.3	NOAA Life Support Lighted Buoy (AQUARIUS)	OFF STA	11463	019-04 KWT	05/04	
1430	Redington Shores Fishing Pier North Light	LT EXT	11412	0927-05 STP	28/05	

2665	Cooper River Degaussing Range E PI Light	LT EXT	11524	747-00 GD7	33/00
2670	Cooper River Degaussing Range West PI Light	LT EXT	11524	015-00 CHA	02/00
2815	U South Navy Pier P Light (1)	LT EXT	11524	N/A	28/05
2865	U.S. Navy Pier B Light	LT EXT	11524	N/A	28/05
3015	Cooper River Ammunition Pier Light	LT EXT	11527	N/A	28/05
3115	Amoco South Btg Dolphin Obstruction Light	LT EXT	11527	004-07 SJN	02/07
3245	Cooper River Mon Sta Obstruction Light E	LT IMCH	11527	N/A	28/05
3260	South Carolina Gas & Elec North Pier Light	LT EXT	11527	NA	38/06
3265	South Carolina Gas & Elec South Pier Light	LT EXT	11527	NA	38/06
4355	Baynard Cove Creek Daybeacon 4	DBN DEST	11516	N/A	05/05
4360	Baynard Cove Creek Daybeacon 6	DBN IMCH	11516	N/A	05/05
6027	Cloister Hotel North Obstruction Light	LT EXT	11508	N/A	17/05
7425	Blount Island Wharf Southwest Light	LT IMCH	11491	112-06 JAX	13/06
7430	Blount Island Wharf Northwest Light	LT IMCH	11491	111-06 JAX	13/06
9765	Sebastian Inlet Channel Daybeacon 8	DBN IMCH	11472	N/A	05/05
9770	Sebastian Inlet Channel Daybeacon 9	DBN DEST	11472	NA	09/06
9775	Sebastian Inlet Channel Daybeacon 10	DBN IMCH	11472	N/A	05/05
9795	Sebastian Inlet Channel Daybeacon 14	DBN DEST	11472	507-06 MIA	40/06
9880	Banty Saunders Rec Area Daybeacon 8	DBN IMCH	11475	N/A	13/05
11030	Caesar Creek Daybeacon 10	TRUB	11463	534-06 MIA	43/06
11045	Caesar Creek Daybeacon 13	TRUB	11464	536-06 MIA	43/06
11550	Garden Cove Daybeacon 3	DBD DEST	11463	423-05 KWT	44/05
11560	Garden Cove Daybeacon 5	DBN DEST	11463	161-05 KWT	29/05
11565	Garden Cove Daybeacon 6	DBD DEST	11463	NA	44/05
11570	Garden Cove Daybeacon 7	DBD DEST	11463	NA	44/05
11575	Garden Cove Daybeacon 8	DBD DMGD	11463	NA	19/06
11580	Garden Cove Daybeacon 9	DBD DEST	11463	NA	44/05
11585	Garden Cove Daybeacon 10	DBD DEST	11464	428-05 KWT	38/05
11590	Garden Cove Daybeacon 11	DBD DMGD	11463	429-05 KWT	39/05
11605	Garden Cove Daybeacon 13	DBD DMGD	11464	327-05 KWT	39/05
11615	Garden Cove Daybeacon 15	DBD DMGD	11463	NA	19/06
11695	John Pennekamp Coral Reef Park Buoy F	MISSING	11451	NA	13/06
11730	Grecian Rocks Obstruction Daybeacon	DBN DEST	11451	333 / 553 KWT	39/05
11740	Mosquito Bank Obstruction Daybeacon	DBN DEST	11451	554-05 KWT	47/05
11745	White Bank Obstruction Daybeacon	DBN DEST	11451	332-05 KWT	39/05
11750	French Reef Obstruction Daybeacon	DBN DEST	11451	NA	15/06
11760	Molasses Reef North Obstruction Daybeacon	DBN DEST	11451	N/A	09/06
11765.1	Port Largo Channel Daybeacon 4	DBN DEST	11463	012/329/489 KE	02/05
11765.2	Port Largo Channel Daybeacon 6	DBN DEST	11464	578-05 KWT	52/05
11851	Newport Bay Daybeacon 1	DBN DMGD	11464	488-05 KWT	44/05
11851.4	Newport Bay Daybeacon 5	DBD DEST	11464	484-05 KWT	44/05
11851.5	Newport Bay Daybeacon 6	DBN DEST	11464	485-05 KWT	24/04
11851.6	Newport Bay Daybeacon 7	DBN DMGD	11464	486-05	44/05
11851.8	Newport Bay Daybeacon 9	DBN DEST	11464	487-05 KWT	24/04
11851.9	Newport Bay Daybeacon 10	DBN DEST	11464	N/A	24/04
11852.2	Newport Bay Daybeacon 15	DBN DEST	11464	N/A	24/04
11853.3	Newport Bay Auxiliary Channel Daybeacon 4	MISSING	11464	N/A	09/06
11917.5	Mariners Club Marina Daybeacon 8	DBD DEST	11463	328-05 KWT	39/05
11945	Key Largo Ocean Resort Light 2	LT EXT	11451	005-06 KWT	03/06
12501.4	Vaca Cut Daybeacon 8	DBN DEST	11453	140-06 KWT	30/06

12865	Yellow Shark Channel Buoy 17	DBN DEST	11449	NA	40/06
13060	Shell Key Channel Daybeacon 18	DBD DEST	11449	315-05 KEY	39/05
13195	Indian Key Channel Daybeacon 12	DBD DEST	11449	NA	40/06
13345	Lignumvitae Channel Daybeacon 15	DBD DMGD	11449	NA	31/06
13920	Ramrod Key Channel Daybeacon 1	MISSING	11446	NA	03/06
14067	Summerland Key Daybeacon 6	DBN IMCH	11445	N/A	28/05
14230	Upper Sugarloaf Sound Daybeacon 11	MISSING	11446	148-06 KWT	32/06
14310	Cudjoe Key Daybeacon 11	DBD DEST	11446	161-06 KWT	34/06
14665	Key West Oceanside Marina Daybeacon 1	DBN IMCH	11446	N/A	09/05
14705	Key West Oceanside Marina Daybeacon 9	DBN IMCH	11445	N/A	12/03
14980.2	Key West Mooring Field Light B	LT IMCH	11447	N/A	39/04
15320	Lake Passage Channel Daybeacon 17	DBD DEST	11441	N/A	40/05
16110	NPS Boat Basin South Channel Daybeacon 2	DBN IMCH	11429	1303-04 STP	35/04
16120	NPS Boat Basin South Channel Daybeacon 4	DBN IMCH	11429	1304-04 STP	48/03
16135	NPS Boat Basin West Channel Daybeacon 1	DBN IMCH	11430	1302-04 STP	35/04
16145	NPS Boat Basin West Channel Daybeacon 4	DBN IMCH	11429	1301-04 STP	35/04
16150	NPS Boat Basin West Channel Daybeacon 5	DBN IMCH	11429	1300-04 STP	48/03
16160	NPS Boat Basin West Channel Daybeacon 7	DBN DEST	11429	1299-04 STP	48/03
16665	Blackwater River Daybeacon 56	DBN DEST	11430	NA	13/06
16750	Caxambas Bay Daybeacon 19	MISSING	11429	300-07 STP	13/07
16905	Caxambas Pass Entrance Light C	DBN DEST	11430	NA	44/05
17105	Isles of Capri Daybeacon 2	DBN IMCH	11430	N/A	48/03
17120	Isles of Capri Daybeacon 5	DBN DEST	11430	NA	13/06
17140	Isles of Capri Daybeacon 9	DBN IMCH	11430	0934-05 STP	13/05
17475	Gordon Pass North Jetty Obstruction Daybeacon	DBD DEST	11430	318-07 STP	13/07
17477	Gordon Pass South Jetty Obstruction Daybeacon B	DBD DMGD	11430	317-07 STP	13/07
17479	Gordon Pass South Jetty Obstruction Daybeacon C	DBD DEST	11430	316-07 STP	13/07
17480	Gordon Pass Channel Obstruction Daybeacon	DBD DMGD	11430	315-07 STP	13/07
17480.01	Gordon Pass North Obstruction Buoy	DBD DMGD	11430	314-07 STP	13/07
17480.02	Gordon Pass South Obstruction Buoy	DBD DEST	11430	313-07 STP	13/07
17650	Naples Yacht Club Daybeacon 1	DBD DEST	11430	309-07 STP	13/07
17660	Naples Yacht Club Daybeacon 3	DBD DEST	11430	310-07 STP	13/07
17667	Naples Yacht Club Daybeacon 5	DBD DEST	11430	311-07 STP	13/07
17667.1	Naples Yacht Club Daybeacon 7	DBD DEST	11430	312-07 STP	13/07
17710	Doctors Pass Daybeacon 1A	MISSING	11430	1160-06 STP	36/06
17760	Doctors Pass Daybeacon 12	MISSING	11430	1161-06 STP	36/06
17790	Wiggins Pass Daybeacon 4	MISSING	11427	285-07 STP	12/07
17805	Wiggins Pass Daybeacon 10	MISSING	11427	284-07 STP	12/07
17810	Wiggins Pass Daybeacon 11	MISSING	11427	283-07 STP	12/07
17965	New Pass Lighted Buoy 2	OFF STA	11427	182/255-07 STP	08/07
18875	Mullock Creek Daybeacon 28	MISSING	11427	1505-06 STP	48/06
18995	Alternate Route Channel Daybeacon 3	DBN DEST	11427	N/A	18/03
18995.06	Estero Pointe Channel Daybeacon 12	DBN IMCH	11427	1316-04 STP	35/04
19000	Alternate Route Channel Daybeacon 4	DBN DMGD	11427	NA	13/06
19005	Alternate Route Channel Daybeacon 5	DBN DMGD	11427	NA	13/06
19015	Alternate Route Channel Daybeacon 7	DBN DEST	11427	1319-04 STP	15/04
19025	Alternate Route Channel Daybeacon 9	DBN DEST	11427	N/A	15/04
19030	Alternate Route Channel Daybeacon 10	DBN IMCH	11427	N/A	18/03

19065	Coconut Channel Daybeacon 7	DBN IMCH	11427	N/A	17/04
19080	Coconut Channel Daybeacon 10	DBN DEST	11427	596-04 STP	18/04
19250	Southern Passage Daybeacon 5	DBD DEST	11427	NA	13/06
19270	Southern Passage Daybeacon 9	DBD DEST	11427	NA	13/06
19275	Southern Passage Daybeacon 10	DBN IMCH	11427	N/A	17/04
19280	Southern Passage Daybeacon 11	DBN IMCH	11427	NA	13/06
19300	Southern Passage Daybeacon 15	DBD DEST	11427	NA	51/05
19305	Southern Passage Daybeacon 16	DBN IMCH	11427	1325-04 STP	35/04
19320	Southern Passage Daybeacon 19	DBN IMCH	11427	N/A	35/04
19335	Spring Creek Daybeacon 2	DBD DMGD	11427	NA	13/06
19340	Spring Creek Daybeacon 4	DBN DEST	11427	N/A	28/05
19350	Spring Creek Daybeacon 6	DBN DMGD/DBN IMCH	11427	1001-05 STP	28/05
19360	Spring Creek Daybeacon 8	DBN IMCH/DBD DEST	11427	1002-05 STP	28/05
19365	Spring Creek Daybeacon 9	DBN IMCH	11427	N/A	28/05
19370	Spring Creek Daybeacon 11	DBN DEST	11427	N/A	28/05
19430	Spring Creek Daybeacon 26	DBN IMCH	11427	N/A	28/05
19445	Spring Creek Daybeacon 30	DBN IMCH/DBD DEST	11427	N/A	35/04
19510	Spring Creek Daybeacon 50	DBN DEST	11427	N/A	28/05
20355	Upper Myakka River Daybeacon A	DBN IMCH	11426	N/A	44/04
20450	Ponce De Leon Park Channel Light 2	LT IMCH	11426	N/A	44/04
20460	Ponce De Leon Park Channel Daybeacon 6	DBN DEST	11426	N/A	02/05
20525	Isles Channel Daybeacon 7	DBN IMCH	11426	N/A	02/05
20560	Isles Cross Channel Daybeacon 3	DBN DEST	11426	N/A	02/05
21245	Charlotte Harbor Yacht Club Daybeacon 1	DBN IMCH	11426	N/A	08/04
21250	Charlotte Harbor Yacht Club Daybeacon 2	DBN IMCH	11426	N/A	02/05
21255	Charlotte Harbor Yacht Club Daybeacon 3	DBN IMCH	11426	N/A	08/04
21260	Charlotte Harbor Yacht Club Daybeacon 4	DBN IMCH	11426	N/A	02/05
21265	Charlotte Harbor Yacht Club Daybeacon 5	DBN IMCH	11426	N/A	08/04
21270	Charlotte Harbor Yacht Club Daybeacon 6	DBN IMCH	11426	N/A	02/05
21275	Charlotte Harbor Yacht Club Daybeacon 7	DBN IMCH	11426	N/A	02/05
21280	Charlotte Harbor Yacht Club Daybeacon 8	DBN IMCH	11426	N/A	02/05
21285	Charlotte Harbor Yacht Club Daybeacon 9	DBN IMCH	11426	N/A	08/04
21355	Stump Pass Daybeacon 4	DBN DEST	11425	722-06 STP	22/06
21360	Stump Pass Daybeacon 5	DBN DEST	11425	N/A	22/06
21370	Stump Pass Daybeacon 6	DBN DEST	11425	720-06 STP	22/06
21375	Stump Pass Daybeacon 7	DBN DEST	11425	719-06 STP	22/06
21395	Stump Pass Marina Daybeacon 3	DBN DEST	11425	1669-05 STP	45/05
21400	Stump Pass Marina Daybeacon 4	OFF STA	11425	1670-05 STP	45/05
21405	Stump Pass Marina Daybeacon 5	OFF STA	11425	1671-05 SEC ST	45/05
21410	Stump Pass Marina Daybeacon 6	OFF STA	11425	1672 / 1697 STP	45/05
21415	Stump Pass Marina Light	LT IMCH	11425	N/A	19/03
21456.03	Dona Bay Channel Daybeacon 13	DBN DEST	11425	0874-05 STP	23/05
21456.12	Dona Bay Channel Daybeacon 21	DBN IMCH	11425	0875-05 STP	23/05
21500.1	Big Sarasota Pass Daybeacon 1	DBD DEST	11425	NA	37/05
21505	Big Sarasota Pass Daybeacon 9	DBN DEST	11425	679-06 STP	22/06
21520	Big Sarasota Pass Daybeacon 14	DBN DEST	11425	1267-06 STP	41/06
21567.5	Lido Key Channel Daybeacon 16	DBD DMGD	11425		22/06
21570.2	North Siesta Key Daybeacon 3	DBD DEST	11425	0354-06 STP	11/06
21660	Country Club Shores Daybeacon 2	DBN IMCH	11425	N/A	28/05

21665	Country Club Shores Daybeacon 4	DBN IMCH	11425	N/A	28/05
21670	Country Club Shores Daybeacon 6	DBD DEST	11425	0840-05 STP	23/05
21675	Country Club Shores Daybeacon 8	DBD DMGD	11425		22/06
21680	Country Club Shores Daybeacon 10	DBN IMCH	11425	N/A	28/05
21685	Country Club Shores Daybeacon 12	DBD DEST	11425	N/A	28/05
21690	Country Club Shores Daybeacon 14	DBN DEST	11425	N/A	28/05
21800	Leffis Key Channel Daybeacon 5	DBN IMCH/NUM MSNG/DAMGD	11425	094-07 STP	06/07
21805	Leffis Key Channel Daybeacon 6	DBN DEST	11425	093-07 STP	06/07
21810	Leffis Key Channel Daybeacon 7	DBN IMCH/NUM MSNG/DAMGD	11425	095-07 STP	06/07
21950	Fifty-Ninth Street Boat Ramp Daybeacon 3	DBN DEST	11415	N/A	28/05
22290	Tampa Bay P.O.R.T.S. Monitor Light P	DBD DEST	11412	157-07 STP	08/07
22815.5	MacDill Air Force Base Prohibited Area Daybeacon (24)	DBN DEST	11416	N/A	24/03
23045	Big Bend Channel Lighted Buoy 2	LT EXT	11416	265-07 STP	11/07
23130	Big Bend Channel East Range Front Light	LT EXT	11416	110-07 STP	06/07
23130	Big Bend Channel East Range Front Light	LT EXT	11416	110-07 STP	50/06
23135	Big Bend Channel East Upper Range Rear Light	LT EXT	11400	1031-06 STP	29/06
23795	Weedon Island Channel Entrance Lighted Buoy 1	LT EXT	11416	109-07 STP	06/07
23800	Weedon Island Channel Entrance Lighted Buoy 2	MISSING	11416	250-07 STP	11/07
23950.5	Old Tampa Bay Pipeline West Light	LT EXT	11416	NA	13/06
23985	Culbreath Cay Daybeacon 1	DBN DEST	11416	0876-05 STP	13/05
23990	Culbreath Cay Daybeacon 2	DBN DEST	11416	0877-05 STP	13/05
23995	Culbreath Cay Daybeacon 4	DBN DEST	11416	N/A	13/05
24005	Culbreath Cay Daybeacon 6	DBN IMCH	11416	856-04 STP	26/04
24015	Culbreath Cay Daybeacon 8	DBN DEST	11416	857-04 STP	26/04
24040	Bridgeview Channel Daybeacon 1	DBN DEST	11416	N/A	13/05
24050	Bridgeview Channel Daybeacon 3	DBN DMGD	11416	N/A	14/01
24055	Bridgeview Channel Daybeacon 4	DBN IMCH	11416	390-04 STP	12/04
24195	Dana Shores Daybeacon 6	DBN DEST	11416	1461-06 STP	47/06
24250	Dana Shores Daybeacon 22	DBN DMGD	11416	1462-06 STP	47/06
24265	Bay Crest Daybeacon 3	MISSING	11416	1456-06 STP	47/06
24270	Bay Crest Daybeacon 4	DBN DMGD	11416	1457-060 STP	47/06
24280	Bay Crest Daybeacon 6	DBN DMGD	11416	1458-06	47/06
24340	Cabbagehead Bayou Daybeacon 12	DBN DEST		1204-06 STP	38/06
24525	Bahia Beach Daybeacon 9	DBD DEST	11416	054-07 STP	04/07
24575	Bahia Beach Marina Daybeacon 4	MISSING	11416	053-07 STP	04/07
24620	Apollo Beach Jetty Obstruction Daybeacon	DBN DEST	11416	NA	45/06
24625	Apollo Beach Daybeacon 4	DBN DMGD	11416	1463-06 STP	47/06
24653	Symphony Isles Danger Daybeacon	DBN IMCH	11416	1464-06 STP	47/06
25250	Bayou Grande Channel Daybeacon 52	MISSING	11416	045-07 STP	03/07
25430	Bunces Pass Daybeacon 12	HAZ NAV/DBN DEST	11415	1333-06 STP	43/06
25510.1	Dent Channel Daybeacon 2	DBN DEST	11411	0538-06 STP	18/06
25515	Dent's Channel Daybeacon 3	TRLB	11415	1200-05 STP	29/05
25555	South Dent Channel Daybeacon 7	DBN DEST	11411	N/A	24/03
25600.01	Treasure Island North Terminal Groin Obstruction Light	LT EXT	11411	1089-06 STP	33/06
25655	Clearwater Beach Lighted Buoy A	OFF STA	11412	N/A	11/05
25660	Clearwater Beach Lighted Buoy B	OFF STA	11412	N/A	11/05
25665	Clearwater Beach Lighted Buoy C	OFF STA	11412	0936-05 STP	11/05
25670	Clearwater Beach Lighted Buoy D	OFF STA	11412	0935-05 STP	11/05
25675	Clearwater Beach Lighted Buoy E	OFF STA	11412	N/A	11/05
26025	Hurricane Pass Daybeacon 13	DBD DEST	11411	273-07 STP	12/07

27080	Hudson Creek Daybeacon 18	DBN DEST	11409	NA	18/06
27190	Sea Pines Channel Daybeacon 14	DBN DEST	11409	NA	13/06
28715	Homosassa River Daybeacon 2	DBD DMGD/DBD DEST	11409	1237-06 STP	40/06
28725	Homosassa River Daybeacon 4	DBN DEST	11409	199-07 STP	09/07
28773	Crystal Bay Scallop Platform Light	LT IMCH	11409	1559-06 STP	51/06
28915	Salt River Daybeacon 2	DBN IMCH	11409	NA	13/06
28920	Salt River Daybeacon 3	DBN IMCH	11409	NA	13/06
28925	Salt River Daybeacon 5	DBN IMCH	11409	NA	13/06
28930	Salt River Daybeacon 6	DBN IMCH	11409	NA	13/06
28935	Salt River Daybeacon 7	DBN IMCH	11409	NA	13/06
28940	Salt River Daybeacon 8	DBN DMGD/DBN IMCH	11409	0418-06 STP	13/06
28945	Salt River Daybeacon 9	DBN IMCH	11409	NA	13/06
28950	Salt River Daybeacon 10A	DBN IMCH	11409	NA	13/06
28960	Florida Power Corporation Channel Light 3	LT EXT	11408	1328-06 STP	42/06
28965	Florida Power Corporation Channel Light 4	DBN IMCH	11408	1284-06 STP	38/06
28975	Florida Power Corporation Channel Light 6	LT IMCH	11408	1285-06 STP	42/06
28985	Florida Power Corporation Channel Light 8	LT IMCH	11408	1286-06 STP	42/06
28990	Florida Power Corporation Channel Light 9	LT IMCH	11408	1287-06 STP	42/06
28995	Florida Power Corporation Channel Light 10	LT EXT	11408	1288-06 STP	38/06
29000	Florida Power Corporation Channel Light 12	LT IMCH	11408	1289-06 STP	42/06
29005	Florida Power Corporation Channel Light 13	LT IMCH	11408	1290-06 STP	42/06
29015	Florida Power Corporation Channel Light 16	LT IMCH	11408	1292-06 STP	42/06
29020	Florida Power Corporation Channel Light 17	LT IMCH	11408	1293-06 STP	42/06
29025	Florida Power Corporation Channel Light 18	LT IMCH	11408	1294-06 STP	42/06
29040	Florida Power Corporation Channel Light 23	LT IMCH	11408	1297-06 STP	42/06
29045	Florida Power Corporation Channel Light 25	LT IMCH	11408	1298-06 STP	42/06
29050	Florida Power Corporation Channel Light 26	LT IMCH	11408	1299-06 STP	42/06
29055	Florida Power Corporation Channel Light 27	LT IMCH	11408	1300-06 STP	42/06
29065	Florida Power Corporation Channel Light 29	LT IMCH	11408	1301-06 STP	42/06
29070	Florida Power Corporation Channel Light 31	LT IMCH	11408	1302-06 STP	42/06
29085	Florida Power Corporation Channel Light 34	LT EXT	11408	1304-06 STP	42/06
29090	Florida Power Corporation Channel Light 35	LT IMCH	11408	1305-06 STP	42/06
29095	Florida Power Corporation Channel Light 36	LT IMCH	11408	1306-06 STP	42/06
29100	Florida Power Corporation Channel Light 37	LT EXT	11408	1307-06 STP	38/06
29120	Florida Power Corporation Channel Light 41	LT IMCH	11408	NA	42/06
29135	Florida Power Corporation Channel Light 44	LT IMCH	11408	1310-06 STP	42/06
29140	Florida Power Corporation Channel Light 45	LT EXT	11408	1311-06 STP	38/06
29160	Florida Power Corporation Channel Light 50	LT IMCH	11408	1560-06 STP	51/06
29165	Florida Power Corporation Channel Light 51	LT IMCH	11408	1561-06 STP	51/06

29170	Florida Power Corporation Channel Light 52	LT IMCH	11408	1562-06 STP	51/06
30085	Suwannee River Alligator Pass Light 2	DBD DEST	11408	NA	17/06
30170	Suwannee River McGriff Pass Daybeacon 1	LT EXT	11408	NA	13/06
30175	Suwannee River McGriff Pass Daybeacon 2	DBD DMGD/DBD DEST	11408	305-07 STP	13/07
30245	Suwannee River McGriff Pass Daybeacon 28	DBN IMCH	11408	306-07 STP	13/07
30270	Salt Creek Daybeacon 2	HAZ NAV/DBN DEST	11408	NA	13/06
30280	Salt Creek Daybeacon 5	DBD DMGD	11408	NA	13/06
30315	Salt Creek Daybeacon 17	HAZ NAV/DBN DEST	11408	1373-05 STP	35/05
30330	Salt Creek Daybeacon 21	DBN DMGD	11408	NA	13/06
30690	Cedar Island Daybeacon 1	DBN DMGD	11407	506-01 STP	28/01
30695	Cedar Island Daybeacon 2	DBN DMGD	11407	507-01 STP	28/01
30825	TMT Outer Dolphin Obstruction Light	LT EXT	25670	319-05 SJN	47/05
30830	TMT Middle Dolphin Obstruction Light	LT EXT	25670	320-05 SJN	47/05
31230	Sea Lovers Pier Buoy West Light	LT EXT	25667	N/A	41/04
31335.1	Puerto del Ray North Channel Lighted Buoy 6	LT EXT	25663	231-06 SJN	37/06
31527	Caballo Blanco Light	LT EXT	25664	348-06 SJN	02/07
31535	Sonda de Vieques Obstruction Lighted Buoy LAE	MISSING	25664	N/A	16/97
31915	Aguirre Power Plant Lighted Buoy 6	LT EXT	25687	096-06 SJN	16/06
32420	Redhook Bay Buoy 1	BUOY DMGD	25647	365-02 GAN	45/02
32425	Redhook Bay Buoy 2	OFF STA	25647	N/A	45/04
32430	Redhook Bay Buoy 3	DBN DMGD	25647	NA	19/06
32440	Redhook Bay Junction Buoy P	OFF STA	25647	N/A	45/04
32450	Redhook Bay South Channel Buoy 2	OFF STA	25647	N/A	45/04
32455	Redhook Bay Buoy 5	MISSING	25647	NA	19/06
32460	Redhook Bay Buoy 6	MISSING	25647	N/A	45/04
32605	West Indian Dock Light	LT EXT	25649	NA	10/07
32780	Cruz Bay Buoy 1	MISSING	25647	359-02 GAN	45/02
32805	Cruz Creek Channel Buoy 1C	MISSING	25647	360-02 GAN	45/02
32810	Cruz Creek Channel Buoy 2C	MISSING	25647	NA	19/06
33200	Lime Tree Bay Port Basin Light 15	LT EXT	25641	067-06 SJN	13/06
33230	Krause Lagoon Channel Lighted Buoy 4A	LT EXT	25641	NA	08/07
33315	Krause Lagoon Cross Channel Lighted Buoy 1	MISSING	25641	065-06 SJN	13/06
34745	Johns Island Dock Obstruction Light	LT EXT/DBN DEST	11518	N/A	27/04
35425	Marsh Harbor Marina Daybeacon 4	DBD DMGD	11518	N/A	51/04
35585	Trenchards Inlet Tide Gauge Daybeacon	DBN IMCH	11516	N/A	03/04
35590	Station Creek West Tide Gauge Daybeacon	DBN DEST	11516	N/A	03/04
35630	Ribaut Island Dock Light G	LT EXT	11507	N/A	04/05
36232	Delegal Creek Channel Buoy 3	MISSING	11507	N/A	28/05
36233	Delegal Creek Channel Buoy 4	MISSING	11507	N/A	28/05
36235	Delegal Creek Channel Buoy 5	BUOY DMGD	11507	N/A	28/05
38843.6	Vilano Marina North Channel Daybeacon 4	DBN IMCH	11485	N/A	06/04
42290	Diamond 99 Marina Daybeacon 1	DBD DEST	11485	NA	14/06
42300	Diamond 99 Marina Daybeacon 3	DBD DEST	11472	NA	14/06
42310	Diamond 99 Marina Daybeacon 5	DBD DEST	11472	NA	14/06
42490.1	Manatee Cove Marina Daybeacon 1	DBN DEST	11476	N/A	31/04
42490.3	Manatee Cove Marina Daybeacon 3	DBN IMCH	11476	N/A	02/05
42491	Manatee Cove Marina Range Front Light	LT EXT	11476	N/A	19/04
42492	Manatee Cove Marina Range Rear Light	LT EXT/DBN DEST	11476	N/A	44/04
42830	Central Avenue Entrance Channel Light 2	LT EXT	11476	480-05 JAX	49/05

43030	Kelly Park Channel Light 1	LT EXT	11476	N/A	16/04
43045	Kelly Park Channel Daybeacon 4	DBN DEST	11476	NA	13/06
43055	Kelly Park Channel Daybeacon 7	DBN DEST	11476	NA	13/06
43115	Intracoastal Marina Channel Daybeacon 1	DBN IMCH	11476	N/A	07/05
43120	Intracoastal Marina Channel Daybeacon 2	DBN IMCH	11476	N/A	07/05
43125	Intracoastal Marina Channel Daybeacon 3	DBN DEST	11476	N/A	14/05
43135	Intracoastal Marina Channel Daybeacon 5	DBN IMCH	11476	N/A	14/05
43140	Intracoastal Marina Channel Daybeacon 6	DBN IMCH	11476	N/A	14/05
43145	Intracoastal Marina Channel Daybeacon 7	DBN IMCH	11476	N/A	14/05
43160	Intracoastal Marina Channel Daybeacon 10	DBN IMCH	11476	N/A	14/05
43350	Tucker Channel Daybeacon 1	DBN DMGD	11472	N/A	19/04
43355	Tucker Channel Daybeacon 2	DBN DMGD	11472	N/A	19/04
43575	Coconut Point Daybeacon 1	DBN IMCH	11472	N/A	44/04
43580	Coconut Point Daybeacon 2	DBN IMCH	11472	N/A	44/04
43585	Coconut Point Daybeacon 3	DBN IMCH	11472	N/A	11/05
43590	Coconut Point Daybeacon 4	DBN IMCH	11472	N/A	11/05
43595	Coconut Point Daybeacon 5	DBN IMCH	11472	N/A	11/05
43600	Coconut Point Daybeacon 6	DBN IMCH	11472	N/A	44/04
43685.2	Channel 68 Marina Daybeacon 2	DBN DEST	11472	N/A	10/03
43700	River Run Daybeacon 1	DBN IMCH/DBD DEST	11472	N/A	17/05
43710	River Run Daybeacon 3	DBN IMCH/DBD DEST	11472	N/A	17/05
43720	River Run Daybeacon 5	DBN IMCH	11472	N/A	21/05
44005	Grand Harbor Marina Daybeacon 8	DBN IMCH	11472	N/A	28/05
44025	Grand Harbor Marina Daybeacon 12	DBN IMCH	11472	N/A	28/05
44035	Grand Harbor Marina Daybeacon 14	DBN DEST	11472	N/A	28/05
44045	Grand Harbor Marina Daybeacon 16	DBN IMCH	11472	N/A	28/05
44065	Bermuda Bay Daybeacon 1	DBN DEST/DBN IMCH	11472	N/A	08/04
44070	Bermuda Bay Daybeacon 2	DBN IMCH	11472	N/A	28/05
44075	Bermuda Bay Daybeacon 3	DBN IMCH	11472	N/A	28/05
44080	Bermuda Bay Daybeacon 4	DBN DEST	11472	N/A	29/05
44085	Bermuda Bay Daybeacon 5	DBN IMCH	11472	N/A	10/03
44090	Bermuda Bay Daybeacon 6	DBN DEST	11472	N/A	28/05
44095	Bermuda Bay Daybeacon 7	DBN IMCH	11472	N/A	28/05
44105	Bermuda Bay Daybeacon 9	DBN IMCH	11472	N/A	28/05
44110	Bermuda Bay Daybeacon 10	DBN DEST/DBN IMCH	11472	N/A	08/04
44115	Bermuda Bay Daybeacon 11	DBN IMCH	11472	N/A	10/03
44120	Bermuda Bay Daybeacon 12	DBN IMCH	11472	N/A	08/04
44845	Linkport Channel Daybeacon 1	DBN DEST	11472	NA	36/06
44848	Linkport Channel Daybeacon 2	DBD DEST	11472	NA	36/06
44850	Linkport Channel Daybeacon 3	DBD DEST	11472	NA	36/06
44855	Linkport Channel Daybeacon 4	DBD DEST	11472	NA	38/06
44860	Linkport Channel Daybeacon 5	DBN DEST	11472	NA	38/06
44870	Linkport Channel Daybeacon 7	MISSING	11472	NA	38/06
44875	Linkport Channel Daybeacon 8	DBD DEST	11472	NA	38/06
44980	Village Marina Daybeacon 1	DBN DEST	11476	N/A	27/04
45540	Fairwinds Cove Daybeacon 7	DBN IMCH	11476	N/A	15/04
45560	Fairwinds Cove Daybeacon 12	DBN IMCH	11476	N/A	15/04
45585	Rigels Cove Channel Daybeacon 1	DBN IMCH	11472	N/A	15/04
45590	Rigels Cove Channel Daybeacon 2	DBN IMCH	11472	N/A	15/04
45595	Rigels Cove Channel Daybeacon 3	DBN IMCH	11472	N/A	15/04
45600	Rigels Cove Channel Daybeacon 4	DBN IMCH	11472	N/A	15/04

45605	Rigels Cove Channel Daybeacon 5	DBN IMCH	11472	N/A	15/04
45610	Rigels Cove Channel Daybeacon 6	DBN IMCH	11472	N/A	15/04
45615	Rigels Cove Channel Daybeacon 7	DBN DEST	11472	N/A	15/04
45620	Rigels Cove Channel Daybeacon 8	DBN IMCH	11472	N/A	15/04
45625	Rigels Cove Channel Daybeacon 9	DBN IMCH	11472	N/A	15/04
45630	Rigels Cove Channel Daybeacon 10	DBN IMCH	11472	N/A	15/04
45980	Miles Grant Daybeacon 2	DBN IMCH	11476	N/A	21/04
46005	St Lucie Inlet State Park Channel Daybeacon 1	DBD DEST	11476	646-05 MIA	45/05
46010	St Lucie Inlet State Park Channel Daybeacon 2	DBD DEST	11476	647-05 MIA	45/05
46625	New Port Cove Marine Ctr Daybeacon 3	DBN DEST	11472	N/A	28/05
46630	New Port Cove Marine Ctr Daybeacon 4	DBN DEST	11472	N/A	28/05
46640	New Port Cove Marine Ctr Daybeacon 6	DBN DEST	11472	N/A	28/05
46650	New Port Cove Marine Ctr Daybeacon 8	DBN DEST	11472	NA	51/05
46855	West Palm Beach Daybeacon 1	DBN IMCH	11476	N/A	28/05
46865	West Palm Beach Daybeacon 3	DBN DEST	11476	N/A	28/05
47640	Golden Gates Marina South Obstruction Light	DBN DEST	11467	499-05 MIA	37/05
47645	Williams Island Daybeacon 1	DBN DEST	11467	286-03 MIA	22/03
47850	Keystone Point Channel Daybeacon 4	DBN DEST	11467	307-06 MIA	24/06
47880	Keystone Point Channel Daybeacon 16	DBN DEST	11467	308-06	24/06
48250	Miami Shores Channel Daybeacon 8	MISSING	11467	075-06	05/06
48500	Cloughton Island North Obstruction Daybeacon	DBN DMGD	11465	330-06 MIA	27/06
48505	Cloughton Island Middle Obstruction Daybeacon	DBN DEST	11465	637-04 MIA	51/04
48570	Villa Regina Daybeacon 5	DBD DEST	11465	126-07 MIA	11/07
48570	Villa Regina Daybeacon 5	DBN DEST	11465	587-03 MIA	49/03
48620	Deering Channel Daybeacon 3	DBN DEST	11465	437-06 MIA	38/06
48640	Deering Channel Daybeacon 7	MISSING	11465	438-06 MIA	38/06
48845	Crandon Park Marina Channel Light 14	DBN DEST	11467	540-6 652-6 MI	43/06
49040	Dinner Key Marina South Channel Light 13	LT EXT	11465	406-06 MIA	35/06
49085	Key Biscayne Yacht Club Light 4	LT IMCH	11465	597-02 MIA	49/02
49160	Four Way Channel Directional Daybeacon	DBN DEST	11465	N/A	39/97
49190	Four Way Channel Daybeacon 8	DBN DEST	11465	065-03 MIA	05/03
49225	Hughes Cove East Obstruction Daybeacon	DBN DMGD	11465	N/A	24/98
49245	Entrada Channel Daybeacon 3	DBN DEST	11465	340-04 MIA	29/04
49340	Gables Estates Light 2	DBD DEST	11465	NA	17/06
49345	Gables Estates Daybeacon 2A	DBD DEST	11465	NA	17/06
49350	Gables Estates Daybeacon 3	DBD DEST	11465	NA	17/06
49360	Gables Estates Daybeacon 5	DBD DEST	11465	NA	17/06
49678.5	Boca Chita Channel Buoy 4	MISSING	11465	NA	42/06
49679.5	Boca Chita Channel Buoy 6	MISSING	11465	NA	42/06
49790	Black Point Channel Daybeacon 12	DBN IMCH/NUM MSNG/DAMGD	11464	NA	42/06
49805	Black Point Channel Daybeacon 15	DBN DEST	11464	NA	42/06
49815	Black Point Channel Daybeacon 17	MISSING	11464	NA	42/06
49865	Convoy Point Light 1	LT EXT	11467	014-07 MIA	47/06
49870	Convoy Point Light 2	LT EXT	11467	015-07 MIA	47/06
49955	Turkey Point Channel Light 2	LT EXT/DBD DEST	11464	099-07 MIA	15/06
49955	Turkey Point Channel Light 2	LT EXT/DBN DEST	11464	182-06 MIA	35/05
49975	Turkey Point Channel Buoy 4A	MISSING	11464	039-07 MIA	05/07
49975	Turkey Point Channel Buoy 4A	MISSING	11464	461-05 MIA	38/05
49995	Turkey Point Channel Buoy 8	LT EXT	11464	520-06 MIA	41/06
50070	Turkey Point Channel Buoy 23	DBN DMGD	11464	154-07 MIA	13/07

50160	Grayvik Daybeacon 1	DBN IMCH	11451	N/A	28/05
50170	Grayvik Daybeacon 3	DBN IMCH/FADED	11451	NA	17/06
50175	Grayvik Daybeacon 4	DBN DEST	11451	NA	17/06
50295	The Moorings Daybeacon 2	DBN DEST	11451	NA	19/06
50300	The Moorings Daybeacon 3	DBD DEST	11451	NA	19/06
50305	The Moorings Daybeacon 4	DBD DEST	11451		19/06
50505.05	Hammer Point Harbor Obstruction Daybeacon C	MISSING	11463	NA	09/06
50505.06	Hammer Point Harbor Obstruction Daybeacon D	MISSING	11463	NA	09/06
50505.07	Hammer Point Harbor Obstruction Daybeacon E	DBN DEST	11463	NA	13/07
50506.02	Hammer Point Harbor Obstruction Daybeacon J	DBN DMGD	11463	NA	09/06
50506.03	Hammer Point Harbor Obstruction Daybeacon K	DBN DEST	11463	NA	13/07
50506.06	Hammer Point Harbor Obstruction Daybeacon N	DBN DEST	11451	NA	13/07
50506.07	Hammer Point Harbor Obstruction Daybeacon O	DBN DEST	11451	NA	13/07
50506.08	Hammer Point Harbor Obstruction Daybeacon P	MISSING	11463	N/A	09/06
50506.09	Hammer Point Harbor Obstruction Daybeacon Q	MISSING	11463	NA	09/06
50905	St. Lucie River (North Fork) Daybeacon 11	DBN IMCH	11428	N/A	04/03
50915	St. Lucie River (North Fork) Daybeacon 13	DBN DMGD/DBD DEST	11428	723-05 MIA	47/05
50955	St. Lucie River (North Fork) Daybeacon 25	DBD DEST	11428	NA	13/06
51975	Buckhead Ridge Canal Light BR	LT IMCH	11428	N/A	53/02
52385	Admiralty Yacht Club Daybeacon 8	DBN IMCH	11428	1716-04 STP	43/04
52420	Indian Creek Daybeacon 1	DBN IMCH	11428	1717-04 STP	43/04
52435	Indian Creek Daybeacon 4	DBN IMCH	11428	N/A	39/04
52440	Indian Creek Daybeacon 5	DBN IMCH	11428	N/A	39/04
52445	Indian Creek Daybeacon 6	DBN IMCH	11428	N/A	39/04
52450	Indian Creek Daybeacon 7	DBN IMCH	11428	1718-04 STP	39/04
52455	Indian Creek Daybeacon 8	DBN IMCH	11428	N/A	39/04
52460	Indian Creek Daybeacon 9	DBN IMCH	11428	N/A	39/04
52465	Indian Creek Daybeacon 10	DBN IMCH	11428	N/A	39/04
52660	Marinatown Daybeacon 2	DBN DEST	11428	0559-06 STP	42/04
52685	Marinatown Daybeacon 7	DBN IMCH	11428	N/A	39/04
52745	Marinatown Daybeacon 19	DBN IMCH/DBD DEST	11428	0564-06 STP	39/04
52775	Marinatown Daybeacon 25	DBN DEST	11428	0566-06 STP	39/04
53515	McGregor Isles Daybeacon 5	MISSING	11427	0569-06 STP	18/06
53565	Harney Point Rim Channel Daybeacon 8	DBN DEST	11427	N/A	27/04
53590	Harney Point Rim Channel Daybeacon 14	DBD DMGD	11427	NA	14/06
54135	Redfish Point Rim Channel Light 20	LT EXT	11427	NA	14/06
54195	Peppertree Pointe E Obstruction Daybeacon	DBD DMGD	11427	0926-06 STP	27/06
54210	Peppertree Pointe Daybeacon 3	DBD DEST	11427	0925-06 STP	14/06
54220	Peppertree Pointe Daybeacon 5	DBD DEST	11427	0924-06 STP	14/06
54225	Peppertree Pointe Daybeacon 6	DBD DMGD	11427	0923-06 STP	27/06
54230	Peppertree Pointe Daybeacon 7	DBD DMGD	11427	0922-06 STP	27/06
54235	Peppertree Pointe Daybeacon 8	DBD DMGD	11427	0921-06 STP	27/06
54240	Peppertree Pointe Daybeacon 9	DBD DMGD	11427	0920-06 STP	27/06
54560	Saint Charles Harbour Daybeacon 15	DBD DMGD	11427	0939-06 STP	27/06
54590	Saint Charles Harbour Daybeacon 21	DBD DMGD	11427	0937-06 STP	27/06
54730	Shell Point Village Daybeacon 5	DBN IMCH	11427	N/A	28/05

54930	Manatee Bay Property Channel Daybeacon 1	DBN IMCH/STRUCT DEFAC	11427	0940-06 STP	27/06
55315	Paradise Canal Daybeacon 2	DBD DEST	11427	0929-06 STP	14/06
55320	Paradise Canal Daybeacon 3	DBD DEST	11427	0930-06 STP	14/06
55325	Paradise Canal Daybeacon 4	DBD DEST	11427	0931-06 STP	14/06
55815	South Seas Plantation Daybeacon 8	DBD DEST	11427	0935-06 STP	27/06
55880	South Seas Plantation Daybeacon 21	DBD DEST	11427	0936-06 STP	10/06
56580	Gasparilla Island Daybeacon 5	TRUB	11425	194-07 STP	09/07
56778	Placida Pier Northeast Obstruction Light	LT EXT	11425	990-02 STP	33/02
56778.5	Placida Pier Southeast Obstruction Light	LT EXT	11425	990-02 STP	33/02
57295	Daughtrey Landing Daybeacon 3	DBN DEST	11425	724-06 STP	21/05
57358.3	Gottfried Creek Daybeacon 22	DBN DEST	11425	0968-06 STP	17/04
57359.7	Englewood Channel Daybeacon 12	DBN IMCH	11425	N/A	21/03
57440	Indian Mound Pk Daybeacon 2	DBN DEST	11425	0969-06 STP	28/05
57470	Royal Palm Marina Buoy 1	BUOY DMGD	11425	0943-06 STP	21/04
57475	Royal Palm Marina Buoy 2	MISSING	11425	0949-06 STP	28/05
57480	Royal Palm Marina Buoy 4	MISSING	11425	0948-06 STP	28/05
57485	Royal Palm Marina Buoy 5	MISSING	11425	N/A	28/05
57490	Royal Palm Marina Buoy 6	BUOY DMGD	11425	0945-06 STP	28/05
57495	Royal Palm Marina Buoy 8	MISSING	11425	0944-06 STP	28/05
57500	Royal Palm Marina Buoy 10	ADRIFT	11425	0967-06 STP	28/05
57505	Royal Palm Marina Buoy 11	MISSING	11425	0966-06 STP	28/05
57510	Royal Palm Marina Buoy 12	BUOY DMGD	11425	0965-06 STP	28/05
57515	Royal Palm Marina Buoy 13	BUOY DMGD	11425	0964-06 STP	28/05
57520	Royal Palm Marina Buoy 14	BUOY DMGD	11425	0963-06 STP	28/05
57525	Royal Palm Marina Buoy 15	MISSING	11425	0962-06 STP	28/05
57530	Royal Palm Marina Buoy 16	MISSING	11425	0960-06 STP	28/05
57535	Royal Palm Marina Buoy 18	BUOY DMGD	11425	0961-06 STP	28/05
57570	Lemon Bay Daybeacon 3	DBD DMGD	11425	714-06 STP	22/06
57619.5	Forked Creek Southeast Obstruction Daybeacon	DBN DEST	11425	715-06 STP	28/05
58175	Midnight Pass Lagoon Daybeacon 2	DBN IMCH	11425	N/A	13/05
58205.4	Midnight Pass Daybeacon 15	DBN DEST	11425	1893-05 STP	51/05
58530	Sarasota Bay Artificial Reef Daybeacon E	DBN DEST	11425	N/A	10/04
58540	Tony Saprito Fishing Pier South Light	LT EXT	11425	N/A	28/05
58545	Tony Saprito Fishing Pier North Light	LT EXT	11425	N/A	28/05
58645	Bay Isles South Channel Daybeacon 2	DBN IMCH	11425	NA	22/06
58655	Bay Isles South Channel Daybeacon 6	DBN IMCH	11425	0847-05 STP	23/05
58665	Bay Isles South Channel Daybeacon 10	DBN IMCH	11425	NA	22/06
58667.35	Bay Isles Perimeter Channel Daybeacon 12	DBN DMGD	11425	699-06 STP	28/05
58667.6	Bay Isles Perimeter Channel Daybeacon 20	DBN IMCH/STRUCT DEFAC	11425	697-06 STP	22/06
58667.65	Bay Isles Perimeter Channel Daybeacon 22	DBN IMCH/STRUCT DEFAC	11425	698-06	22/06
58680	Longboat Key Moorings Light 1	LT EXT	11425	0576-06 STP	18/06
58685	Longboat Key Moorings Light 2	MISSING	11425	0578 / 706-06	28/05
58690	Longboat Key Moorings Daybeacon 3	DBN DEST	11425	N/A	17/04
58710	Longboat Key Moorings Daybeacon 7	DBD DEST	11425	705-06 STP	22/06
58715	Longboat Key Moorings Daybeacon 8	DBD DEST	11425	704-06 STP	22/06
58725	Longboat Key Moorings Daybeacon 10	DBN IMCH	11425	N/A	18/05
58730	Longboat Key Moorings Daybeacon 11	DBN IMCH	11425	N/A	18/05
58740	Sarasota Bay Obstruction Daybeacon	DBN IMCH	11425	703-06 STP	39/04
59030	Longboat Harbor Channel Daybeacon 11	DBD DMGD	11425	696-06 STP	22/06
59145	Longboat Harbor North Marina Daybeacon 6	DBD DEST	11425	729-06 STP	22/06
59245	Buccaneer Inn Daybeacon 10	DBN DEST	11425	698-06 STP	22/06

59265	Buccaneer Inn Daybeacon 14	DBD DMGD	11425	688-06 STP	22/06
59270	Buccaneer Inn Daybeacon 16	DBD DMGD	11425	687-06 STP	22/06
59280	Buccaneer Inn Daybeacon 18	DBN IMCH	11425	0982-06 STP	21/05
59305	Buccaneer Inn Daybeacon 26	DBN DMGD	11425	0981-06 STP	23/05
59380	Coral Shores Channel Daybeacon 4	DBN IMCH/NUM MSNG/DAMGD	11425	096-07 STP	06/07
59430	Coral Shores Channel Daybeacon 14	DBN IMCH/NUM MSNG/DAMGD	11425	098-07 STP	06/07
59440	Coral Shores Channel Daybeacon 16	DBN IMCH/NUM MSNG/DAMGD	11425	099-07 STP	06/07
59475	Coral Shores Channel Daybeacon 23	DBN IMCH/NUM MSNG/DAMGD	11425	100-07 STP	06/07
59485	Coral Shores Channel Daybeacon 25	DBN IMCH	11425	101-07 STP	28/05
59510	Coral Shores Channel Daybeacon 30	DBN IMCH	11425	0975-06 STP	27/06
59540	Mt Vernon & Coral Shores Daybeacon 2N	DBN IMCH	11425	N/A	28/05
59650	Cove Sound Moorings Daybeacon 1	DBD DEST	11425	0915-06 STP	27/06
59655	Cove Sound Moorings Daybeacon 2	DBD DEST	11425	0916-06 STP	27/06
59657	Cove Sound Moorings Channel Daybeacon 3	DBD DEST	11425	0941-06 STP	27/06
59657.5	Cove Sound Moorings Channel Daybeacon 4	DBD DEST	11425	0942-06 STP	27/06
59660	Palma Sola Bay Channel Daybeacon 7	DBN IMCH	11425	N/A	18/03
59730	Perico Bayou Channel Daybeacon 12	DBN IMCH	11415	N/A	19/04
59745	Perico Bayou Channel Daybeacon 14A	DBN DMGD	11415	N/A	19/04
59815	Palma Sola Bay Channel Daybeacon 9	DBN DEST	11425	0283-06 STP	09/06
59860	Palma Sola Bay Channel Daybeacon 18	DBD DEST	11425	0914-06 STP	27/06
60010	Kingfish Boat Ramp Daybeacon 2	DBD DMGD	11415	0416-06 STP	14/06
60020	Kingfish Boat Ramp Daybeacon 5	DBN DMGD	11415	0599-06 STP	14/06
60025	Kingfish Boat Ramp Daybeacon 6	DBD DEST	11415	1562-04 834-06	39/04
60030	Kingfish Boat Ramp Daybeacon 7	DBD DMGD	11415	0598-06 STP	14/06
60035	Kingfish Boat Ramp Daybeacon 8	DBD DEST	11425	0412-06 STP	14/06
60045	Kingfish Boat Ramp Daybeacon 10	DBD DEST	11415	0413-06 STP	14/06
60050	Kingfish Boat Ramp Daybeacon 11	DBD DEST	11415	0414-06 STP	14/06
60055	Kingfish Boat Ramp Daybeacon 12	DBN IMCH	11415	N/A	21/03
60190	Anna Maria Channel Daybeacon 1	DBD DMGD	11415	0539-06 STP	17/06
60245	Anna Maria Channel Daybeacon 12	DBN IMCH	11415	0910-06 STP	05/05
60250	Anna Maria Channel Shoal Daybeacon A	DBN IMCH	11415	N/A	05/05
60640	Bayway Isles Channel Daybeacon 5	DBN IMCH	11411	0940-05 STP	13/05
60670	Bayway Isles Channel Daybeacon 14	DBN IMCH	11411	N/A	13/05
61165	Jungle Beach Daybeacon 1	DBD DMGD	11411	1278-06 STP	42/06
61190	Jungle Beach Daybeacon 6	DBN DEST		1279-06 STP	42/06
61285	Bay Pines Marina Daybeacon 21	MISSING		NA	10/07
62245	Tarpon Cove Daybeacon 20	DBD DMGD	11411	NA	17/06
	Ribaut Island Dock Light A	LT EXT	11507	N/A	04/05
	Ribaut Island Dock Light C	LT EXT	11507	N/A	04/05
	Upper Cooper River Daybeacon 19	DBN DEST	11527	186-05 CHA	23/05

DISCREPANCIES (PRIVATE AIDS) CORRECTED

LLNR	Aid Name	Status	Chart No.	BNM Ref.	LNM St	LNM End
11915	Harborage Yacht Club Entrance Light 2	WATCHING PROPERLY	11451	NA	15/06	13/07

PLATFORM DISCREPANCIES

Name	Status	Position	BNM Ref.	LNM St	LNM End
None					

PLATFORM DISCREPANCIES CORRECTED

Name	Status	Position	BNM Ref.	LNM St	LNM End
None					

SECTION III - TEMPORARY CHANGES and TEMPORARY CHANGES CORRECTED

This section contains temporary changes and corrections to Aids to Navigation for this edition. When charted aids are temporarily relocated for dredging, testing, evaluation, or marking an obstruction, a temporary correction shall be listed in Section IV giving the new position.

TEMPORARY CHANGES

LLNR	Aid Name	Status	Chart No.	BNM Ref.	LNM St	LNM End
625	Cape Canaveral Light	DISCONTINUED	11481	015-06 Jax	03/06	
6220	Brunswick Point Cut Lighted Buoy 26	RELOCATED FOR DREDGING	11489	N/A	12/06	
6225	Brunswick Point Cut Lighted Buoy 27	RELOCATED FOR DREDGING	11489	N/A	12/06	
22500	Tampa Bay Cut B Channel Lighted Buoy 6B	RELOCATED FOR DREDGING	11416	1801-04 STP	44/04	
22515	Port Manatee Channel Lighted Buoy 1	RELOCATED FOR DREDGING	11415	N/A	02/06	
22520	Port Manatee Channel Lighted Buoy 2	RELOCATED FOR DREDGING	11415	016-06 STP	02/06	
22530	Port Manatee Channel Lighted Buoy 3	RELOCATED FOR DREDGING	11415	1977-04 STP	48/04	
22550	Port Manatee Channel Light 7	RELOCATED FOR DREDGING	11415	021-06 STP	02/06	
23495	Hillsborough Cut C Channel Buoy 32	RELOCATED FOR DREDGING	11416	117-07 STP	06/07	14/07
23600	Port Sutton Channel Lighted Buoy 5	RELOCATED FOR DREDGING	11416	113-07 STP	06/07	14/07
31160	Las Cucarachas Light	DISCONTINUED	25667	330-06 GAN	52/06	

TEMPORARY CHANGES CORRECTED

LLNR	Aid Name	Status	Chart No.	BNM Ref.	LNM St	LNM End
------	----------	--------	-----------	----------	--------	---------

None

PLATFORM TEMPORARY CHANGES

Name	Status	Position	BNM Ref.	LNM St	LNM End
------	--------	----------	----------	--------	---------

None

PLATFORM TEMPORARY CHANGES CORRECTED

Name	Status	Position	BNM Ref.	LNM St	LNM End
------	--------	----------	----------	--------	---------

None

SECTION IV - CHART CORRECTIONS

This section contains corrections to federally and privately maintained Aids to Navigation, as well as NOS corrections.

This section contains corrective actions affecting chart(s). Corrections appear numerically by chart number, and pertain to that chart only. **It is up to the mariner to decide which chart(s) are to be corrected.** The following example explains individual elements of a typical chart correction.

Chart Number	Chart Edition	Edition Date	Last Local Notice to Mariners	Horizontal Datum Reference	Source of Correction	Current Local Notice to Mariners
12327	91st Ed.	19-APR-97	Last LNM: 26/97	NAD 83		27/97
<i>Chart Title:</i> NY-NJ-NEW YORK HARBOR - RARITAN RIVER						
Main Panel 2245 NEW YORK HARBOR					CGD01	
(Temp) ADD	NATIONAL DOCK CHANNEL BUOY 3				at 40-41-09.001N	074-02-48.001W
	Green can					
Corrective Action	Object of Corrective Action					Position

(Temp) indicates that the chart correction action is temporary in nature. Courses and bearings are given in degrees clockwise from 000 true.

Bearings of light sectors are toward the light from seaward. The nominal range of lights is expressed in nautical miles (NM) unless otherwise noted.

11411	16th Ed.	01-JUL-06	Last LNM: 12/07	NAD 83		13/07
<i>Chart Title:</i> Intracoastal Waterway Tampa Bay to Port Richey						
Main Panel 191 TAMPA BAY TO PORT RICHEY - TAMPA BAY TO CLEARWATER HARBOR EE-FF. Page/Side: A						
DELETE	Egmont Channel Range Rear Light; F G (Night) F 130ft (Day) (NOS NW-13989)				NOS 27-36-57.770N	082-44-23.130W
ADD	Egmont Channel Range Rear Light; F G 130ft (NOS NW-13989)				NOS 27-36-58.012N	082-44-22.338W
11412	44th Ed.	01-JUN-06	Last LNM: 07/07	NAD 83		13/07
<i>Chart Title:</i> Tampa Bay and St. Joseph Sound						
Main Panel 175 TAMPA BAY AND ST JOSEPH SOUND. Page/Side: N/A						
DELETE	Egmont Channel Range Rear Light; F G (Night) F 130ft (Day) (NOS NW-13989)				NOS 27-36-57.770N	082-44-23.130W
ADD	Egmont Channel Range Rear Light; F G 130ft (NOS NW-13989)				NOS 27-36-58.012N	082-44-22.338W
11415	8th Ed.	01-AUG-06	Last LNM: 12/07	NAD 83		13/07
<i>Chart Title:</i> Tampa Bay Entrance; Manatee River Extension						
Main Panel 2981 TAMPA BAY ENTRANCE. Page/Side: N/A						
DELETE	Egmont Channel Range Rear Light; F G (Night) F 130ft (Day) (NOS NW-13989)				NOS 27-36-57.770N	082-44-23.130W
ADD	Egmont Channel Range Rear Light; F G 130ft (NOS NW-13989)				NOS 27-36-58.012N	082-44-22.338W
11428	34th Ed.	01-JUL-06	Last LNM: 05/07	NAD 83		13/07
<i>Chart Title:</i> Okeechobee Waterway St. Lucie Inlet to Fort Myers; Lake Okeechobee						
CHART FL-ICW-ST LUCIE INLET TO FT MYERS AND LAKE OKEECHOBEE. Page/Side: N/A						
(Temp) RELOCATE	St Lucie River (North Fork) Daybeacon 10				CGD07 from 27-14-20.040N to 27-10-04.644N	080-18-42.926W 080-11-36.698W
11451	32nd Ed.	01-MAR-05	Last LNM: 09/07	NAD 83		13/07
<i>Chart Title:</i> FOLIO SMALL-CRAFT CHART Miami to Marathon and Florida Bay						
CHART FL- MIAMI TO MARATHON AND FLORIDA BAY. Page/Side: N/A						
RELOCATE	Biscayne Bay Light 64				CGD07 from 25-45-37.058N to 25-45-37.328N	080-11-06.396W 080-11-06.472W
RELOCATE	Pelican Bank Southwest Shoal Daybeacon				CGD07 from 25-26-27.519N to 25-26-27.505N	080-17-39.282W 080-17-39.245W
11463	18th Ed.	01-NOV-05	Last LNM: 43/06	NAD 83		13/07
<i>Chart Title:</i> Intracoastal Waterway Sands Key to Blackwater Sound						

Main Panel 2928 SANDS KEY TO BLACKWATER SOUND. Page/Side: N/A

RELOCATE Pelican Bank Southwest Shoal Daybeacon

CGD07
from 25-26-27.519N
to 25-26-27.505N

080-17-39.282W
080-17-39.245W

11465 37th Ed. 03-DEC-04 Last LNM: 09/07 NAD 83

13/07

ChartTitle: Intracoastal Waterway Miami to Elliot Key

Main Panel 310 INTRACOASTAL WATERWAY MIAMI TO ELLIOTT KEY. Page/Side: N/A

RELOCATE Biscayne Bay Light 64

CGD07
from 25-45-37.058N
to 25-45-37.328N

080-11-06.396W
080-11-06.472W

11467 39th Ed. 01-MAY-05 Last LNM: 12/07 NAD 83

13/07

ChartTitle: Intracoastal Waterway West Palm Beach to Miami

CHART FL- ICW - WEST PALM BEACH TO MIAMI. Page/Side: N/A

RELOCATE Biscayne Bay Daybeacon 6A

CGD07
from 25-54-14.690N
to 25-54-14.899N

080-07-47.448W
080-07-47.538W

RELOCATE Biscayne Bay Light 64

CGD07
from 25-45-37.058N
to 25-45-37.328N

080-11-06.396W
080-11-06.472W

RELOCATE Dania Sound Light 35

CGD07
from 26-03-53.675N
to 26-03-53.350N

080-06-50.964W
080-06-50.799W

11468 40th Ed. 01-JAN-04 Last LNM: 09/07 NAD 83

13/07

ChartTitle: Miami Harbor

Main Panel 309 MIAMI HARBOR. Page/Side: N/A

RELOCATE Biscayne Bay Light 64

CGD07
from 25-45-37.058N
to 25-45-37.328N

080-11-06.396W
080-11-06.472W

11470 37th Ed. 01-OCT-04 Last LNM: 10/07 NAD 83

13/07

ChartTitle: Fort Lauderdale Port Everglades

Main Panel 308 FORT LAUDERDALE PORT EVERGLADES. Page/Side: N/A

RELOCATE Dania Sound Light 35

CGD07
from 26-03-53.675N
to 26-03-53.350N

080-06-50.964W
080-06-50.799W

(Temp) RELOCATE New River Sound Light 3
"WR" Lighted Buoy, FI Q G

CGD07
from 26-07-46.125N
to 26-07-45.820N

080-06-34.047W
080-06-34.030W

11487 20th Ed. 01-APR-06 Last LNM: 41/06 NAD 83

13/07

ChartTitle: St. Johns River Racy Point to Crescent Lake

CHART FL-ST JOHNS RIVER-RACY PT TO CRESCENT LAKE. Page/Side: N/A

(Temp) RELOCATE New River Sound Light 3
"WR" Lighted Buoy, FI Q G

CGD07
from 26-07-46.125N
to 26-07-45.820N

080-06-34.047W
080-06-34.030W

11488 26th Ed. 01-DEC-06 Last LNM: 01/07 NAD 83

13/07

ChartTitle: Amelia Island to St. Augustine

Main Panel 285 AMELIA ISLAND TO ST AUGUSTINE. Page/Side: N/A

CHANGE Sounding Units Legend; SOUNDINGS IN FEET (NOS NW-14004)

NOS
29-53-05.000N

081-25-15.000W

11489 36th Ed. 01-JUN-05 Last LNM: 12/07 NAD 83

13/07

ChartTitle: Intracoastal Waterway St. Simons Sound to Tolmato River

CHART GA-FL-ST. SIMONS ISLAND SOUND - TOLOMATO RIVER. Page/Side: N/A

RELOCATE Sawpit Creek Daybeacon 50

CGD07
from 30-30-02.028N
to 30-30-02.012N

081-28-03.599W
081-28-03.611W

RELOCATE South Amelia River Light 28

CGD07
from 30-35-17.700N
to 30-35-17.807N

081-27-00.240W
081-28-00.204W

RELOCATE St Marys River Light 2

CGD07
from 30-43-41.500N
to 30-43-41.622N

081-29-25.332W
081-29-25.335W

11503 42nd Ed. 01-JAN-07 Last LNM: 07/07 NAD 83

13/07

ChartTitle: St. Marys Entrance Cumberland Sound and Kings Bay

Main Panel 199 ST MARYS ENTRANCE-CUMBERLAND SOUND AND KINGS BAY. Page/Side: N/A

RELOCATE St Marys River Light 2

CGD07
from 30-43-41.500N
to 30-43-41.622N

081-29-25.332W
081-29-25.335W

11524 50th Ed. 01-FEB-07 Last LNM: 07/07 NAD 83

13/07

ChartTitle: Charleston Harbor

CHART SC-CHARLESTON HARBOR. Page/Side: N/A

RELOCATE Hog Island Reach Channel Lighted Buoy 42

CGD07
from 32-48-25.188N
to 32-48-15.559N

079-54-47.808W
079-54-49.931W

CHANGE Hog Island Reach Channel Lighted Buoy 42 to 4M

CGD07
at 32-48-15.559N

079-54-49.931W

SECTION V - ADVANCE NOTICES

This section contains advance notice of approved projects, changes to aids to navigation, or upcoming temporary changes such as dredging, etc. Mariners are advised to use caution while transiting these areas.

SUMMARY OF ADVANCED APPROVED PROJECTS

Approved Project(s)

Project Date

Ref. LNM

None

GEORGIA-SAVANNAH RIVER-LOWER FLATS: Range Upgrade.

The following change to the Aids to Navigation System will be made in the Savannah River.

Lower Flats Range Front Light (LLNR 4830): will be changed to a 24 hour range displaying Quick Flashing Red characteristics. The aid is lighted throughout 24 hours and will be visible 1.5 degree each side of the rangeline. The range boards will be removed.

Lower Flats Range Rear Light (LLNR 4835): will be changed to a 24 hour range displaying ISO 6s Red characteristics. The aid is lighted throughout 24 hours and will be visible 1.5 degree each side of the rangeline. The range boards will be removed.

The work is schedule to be completed the weeks of 02 April 2007.

Ref: LNM 10/07 through 12/07

Chart 11512

LNM: 10/07

GEORGIA-SAVANNAH RIVER-FORT JACKSON: Range Upgrade.

The following change to the Aids to Navigation System will be made in the Savannah River.

Fort Jackson Lower Range Front Light (LLNR 4945): will be changed to a 24 hour range displaying Quick Flashing White characteristics. The aid is lighted throughout 24 hours and will be visible 1.5 degree each side of the rangeline. The range boards will be removed.

Fort Jackson Lower Range Rear Light (LLNR 4895): will be changed to a 24 hour range displaying ISO 6s White characteristics. The aid is lighted throughout 24 hours and will be visible 1.5 degree each side of the rangeline. The range boards will be removed.

The work is schedule to be completed the weeks of 02 April 2007.

Ref: LNM 10/07 through 12/07

Chart 11512

LNM: 10/07

GEORGIA-SAVANNAH RIVER-ELBA ISLAND BASIN: Range Upgrade.

The following change to the Aids to Navigation System will be made in the Savannah River.

Elba Island Basin Range Front Light (LLNR 4890): will be changed to a 24 hour range displaying Quick Flashing White characteristics. The aid is lighted throughout 24 hours and will be visible 4 degree each side of the rangeline. The range boards will be removed.

Elba Island Basin Range Rear Light (LLNR 4895): will be changed to a 24 hour range displaying ISO 6s White characteristics. The aid is lighted throughout 24 hours and will be visible 4 degree each side of the rangeline. The range boards will be removed.

The work is schedule to be completed the weeks of 02 April 2007.

Ref: LNM 10/07 through 12/07

Chart 11512

LNM: 10/07

SECTION VI - PROPOSED CHANGES

Periodically, the Coast Guard evaluates its system of aids to navigation to determine whether the conditions for which the aids to navigation were established have changed. When changes occur, the feasibility of improving, relocating, replacing, or discontinuing aids are considered. This section contains notice(s) of non-approved, proposed projects open for comment. SPECIAL NOTE: Mariners are requested to respond in writing to the District office unless otherwise noted (see banner page for address).

PROPOSED WATERWAY PROJECTS OPEN FOR PUBLIC COMMENT

<u>Proposed Project(s)</u>	<u>Closing</u>	<u>Docket No.</u>	<u>Ref. LNM</u>
None			

SECTION VII - GENERAL

This section contains information of general concern to the Mariners. Mariners are advised to use caution while transiting these areas.

WEST INDIES-EASTCOAST PUERTO RICO-ISLA de CULEBRA: Unexploded Ordnance Disposal Operations.

Demolition of unexploded ordnance- the usace has contracted Ellis Environment Group to dispose of unexploded ordnance in the waters surrounding Isla de Culebra. The project is scheduled for completion in 2012. The following areas have been identified as demolition sites 1. Cayo Lobo in AP 18-19'27"N 65-22'36"W; 2. Cayo del Agua in AP 18-18'41"N 65-20'51"W; 3. Alcarraza 18-21'40"N 65-22'09"W; 4. Los Gemeios in AP 18-21'30"N 65-21'41"W; 5. Bahia de Marejada in AP 18-19'45"N 65-17'55"W; 6. Cayo Botella in AP 18-19'30"N 65-14'26"W; 7. Isla Cuebrita 18-19'11"N 65-14'02"W; 8. Cayos Geniqui in AP 18'20'20"N 65-13'54"W; 9. Cayo Tiburon in AP 18'20'42"N 65-14'18"W; 10. Cerro Balcon in AP 18-18'51"N 65-16'12"W. Vessels are cautioned to maintain a distance of 1NM radius from the above mention positions during demolition operations. Days and times of operations will be broadcast VHF-FM Channel 22A.

For further information contact USCG on Channel 16 or 787-289-2041.

Ref: LNM 06/07 through 12/07

Charts: 25663 25664 25667

LNM: 06/07

WEST INDIES-PUERTO RICO-ISLA de VIEQUES-NORTH/EAST/SOUTH COAST: Unexploded Ordnance Disposal Operations.

WEST INDIES-PUERTO RICO-ISLA de VIEQUES-NORTH/EAST/SOUTH COAST: Unexploded Ordnance Disposal Operations.

Unexploded Ordnance Disposal Operations are being conducted with estimated completion date of 2010. Daily operations will take place from 0600 to 1800 at the north, east, and southern positions of Isla de Vieques. Vessels are cautioned not to enter an area encompassed by the following coordinates: Starting north of Vieques from shore at Point 1 (one) in approximate position 18-08'42N 065-19'W, then north approximately 1NM at Point 2 (two) in approximate position 18-09'N 065-19'W, then east approximately 4NM to Point 3 (three) at approximate position 18-09'N 065-14'54"W, then south approximately 4NM at Point 4 (four) at approximate position 18-06'18"N 065-14'54"W, then west approximately 4NM to Point 5 (five) in approximate position 18-06'18N 065-19'W and end north on shore at approximate position 18-07'30"N 065-19'00W. Vessels are cautioned not to enter above mentioned area during ongoing operations. For further information contact U.S. Navy, Roosevelt roads, Ceiba, PR at (787) 865-4152 ext 460.

Ref: LNM 07/06 through 12/07

Charts: 25663 25664 25667

LNM: 07/06

SEACOAST-FLORIDA-BETHEL SHOALS TO JUPITER INLET-BOYNTON BEACH INLET: Offshore Testing of Semi-Submersible Vehicle.

Lockheed Martin will commence offshore testing of an unmanned, remotely piloted, semi-submersible vehicle 1 to 10 miles offshore from Jupiter Inlet to Boynton Beach Inlet on or about February 1, 2007 with completion date on or about April 30, 2007.

The Lockheed Martins RHIB vessel and Sea Tow Palm Beach will support the semi-submersible and will be in constant radio contact with the operations crew and equipped with a remote kill switch.

All vessels will be monitoring VHF Channels 13 and 71. All mariners are urged to stay clear of the support vessels while transiting the area. For further information please contact Mr. Donny Jones at (561) 494-2245.

Ref: LNM 03/07 through 12/07

Chart 11474

LNM: 05/07

SOUTH CAROLINA-COOPER RIVER-DRUM ISLAND: Submerged Hazards.

U.S. Coast Guard Sector Charleston, SC has advised that possible submerged hazards/demolition debris in Cooper River for duration of Grace and Pearman bridge demolition.

Boaters are advised to stay in the main channel when transiting under the new Ravenel Bridge on the Cooper River. For complete text and chartlet of MSI Bulletin see enclosure number (7).

Ref: LNM 20/06 through 12/07

Chart 11524

LNM: 20/06

SOUTH CAROLINA - COOPER RIVER: Three (3) Amber Lights Established.

The Army Corp of Engineers has established three (3) Amber Lights on the Silt Wall in the vicinity of Cooper River Light 49A.

Light "A" Fl 4 in position 32-50.710N/079-55.900W

Light "B" Fl 2.5 in position 32-50.710N/079-55.949W

Light "C" Fl 4 in position 32-50.710N/079-55.992W

Chart 11524

GEORGIA - INTRACOASTAL WATERWAY - ST SIMONS SOUND TO TOLOMATO RIVER - CUMBERLAND SOUND: Notice of Interest to Mariners.

Due to the limited commercial use of the Atlantic Intracoastal Waterway between Port Royal Sound, South Carolina (Mile 552) and Cumberland Sound, Georgia (Mile 713), the Savannah District will not receive funds to maintain the waterway to the authorized depths. The District will monitor the conditions of the waterway and publish quarterly condition reports.

Mariners are to use extreme caution when transiting the waterway until further notice.

Ref: LNM 48/03 through 12/07

Chart 11489

LNM: 48/03

FLORIDA-CUMBERLAND SOUND-FERNANDINA HARBOR TO KINGS BAY-ST MARYS ENTRANCE: Hazard to Navigation.

The Coast Guard has advised that a 73 ft Shrimp Vessel has sunk in approximate position 30-45-04.200N 080-0612.000W in 53 feet of water. All mariners are advised to be on the lookout for floating debris from sunken vessel, and transit the area with caution.

Ref: LNM 02/07 through 12/07

Chart 11502

LNM: 02/07

FLORIDA-AMELIA ISLAND TO ST AUGUSTINE: Underwater Marine Repairs.

U.S. Naval Station Mayport will be placing a work boat in a four point mooring over the Naval Station Degaussing Range at various times based

FLORIDA-AMELIA ISLAND TO ST AUGUSTINE: Underwater Marine Repairs.

upon periods of slack water while divers conduct underwater repairs.

The mooring legs will not interfere with the main channel of the St John River, but will restrict passage of Naval Ships in the Naval Station Mayport Approach Channel. Local traffic to and from the Mayport Basin will be halted during those times when work is in progress.

Four mooring balls will remain in position clear of the St Johns Bar Cut Channel and will be marked with Quick Flashing White Lights (QW). The work boat will display anchor ball day shapes and dive flags for daytime operations, appropriate obstruction lights during darkness, and will monitor VHF Channels 12 and 13 while on station.

Upon completion of daily work mooring legs will be recovered, and the work boat will return to port, clearing the Naval Station Mayport Approach Channel. This operation is ongoing and will be completed on or about April 30, 2007.

Ref: LNM 04/07 through 12/07

Chart 11488

LNM: 04/07

FLORIDA-MIAMI TO ELLIOT KEY: Hazard to Navigation.

The Coast Guard has received a report of a submerged crane in the vicinity of the Marine Stadium near Biscayne Bay, Miami, Florida.

The approximately position: 25 deg 44.69N 080 deg 10.14W. All mariners are advised to exercise caution while transiting the area.

Ref: LNM 51/06 through 12/07

Chart 11465

LNM: 51/06

FLORIDA-SOMBERO KEY TO SAND KEY- WHALE HARBOR: Hazard to Navigation.

The Coast Guard has received a report of a metal pile sticking out of the water approximately one and a half feet between Whale Harbor Daybeacon 3 (LLNR 12700) and Whale Harbor Daybeacon 4 (LLNR 12705).

All mariners are advised to transit the area with caution.

Ref: LNM 30/05 through 12/07

Chart 11442

LNM: 30/05

FLORIDA - CHARLOTTE HARBOR TO TAMPA BAY - VENICE INLET: Hazard to Navigation

The Coast Guard received a report of a 75ft motor yacht sunk with 300 gallons of fuel onboard off Venice Inlet in position 26-58.924N 082-25.776W.

All mariners are advised to transit the area with caution and advise the Coast Guard of any fuel sheening.

Ref: LNM 12/07 and LNM 13/07

Chart 11425

FLORIDA-CHARLOTTE HARBOR TO TAMPA BAY-NEW PASS ENTRANCE CHANNEL: Uncharted Buoys.

The New Pass Entrance Channel is subject to continual change. Buoys are not charted because they are frequently shifted in position. The controlling depth was 8 feet for a width of 100 feet from LIGHT 7 (LLNR 21620) to the S R Bridge; thence 6 feet for a width of 100 feet to the Intracoastal Waterway and 8 feet to the basin; 7 feet in the basin except for shoaling to 3 1/2 feet in the southeast section of the basin.

BUOYS NOT CHARTED IN NEW PASS ENTRANCE CHANNEL

- Buoy 1 (LLNR 21590), - Buoy 2 (LLNR 21595), - Buoy 3A (LLNR 21600), - Buoy 5 (LLNR 21605) and - Buoy 5A (LLNR 21610)

Mariners are advised to use caution while transiting this area and view Local Notice to Mariners editions for shoaling information and repositioning of aids to navigation.

Ref: LNM 52/04 through 12/07

Chart 11425

LNM: 52/04

FLORIDA- TAMPA BAY ENTRANCE- TAMPA BAY: Marine Advisory.

In order to minimize the risk of collision with deep draft vessels and improve the safe transit of shallow draft vessels within the Tampa Bay and its approaches, the Coast Guard Captain of Port Tampa, Florida issues the following advisory: A NOAA survey number H-11344 conducted in July, 2004 reported that a water depth of 10 feet extends approximately 500 feet outward from both sides of the main ship channel in the waters west of the Sunshine Skyway Bridge adjacent to Egmont Channel, Mullet Key Channel, and Tampa Bay Cut "A" except in the vicinity of the Sunshine Skyway Bridge where existing security zones prohibit navigation closer than 100 feet around all bridge supports, dolphins, and rocky outcroppings from piers 88 to 135. Continuing east of the Sunshine Skyway Bridge, the advisory includes the waters adjacent to Point Pinellas Channel, Tampa Bay Cuts -A-, "B", "C", "D", "E", "F", "G", "J", "J-2", West of "K" Cut, Gadsen Point Cut, and Hillsborough Bay Cuts "A", and "C". All vessels drafting less than 10 feet may consider utilizing waters that have been identified by the 2004 NOAA survey parallel to, and within 500 feet of, the main

FLORIDA- TAMPA BAY ENTRANCE- TAMPA BAY: Marine Advisory.

ship channel when identifying the safest navigational course for transiting Tampa Bay and its approaches.

Ref: LNM 14/05 through 12/07

Chart 11415

LNM: 14/05

FLORIDA-INTRACOASTAL WATERWAY-MIAMI TO ELLIOT KEY

Eighteen (18) inch yellow special purpose work buoys will be deployed in and within the immediate vicinity of the Atlantis Project Site to facilitate construction. These buoys will be periodically relocated until the project is completed.

The project is located between Latitudes 25 deg 41'900N and 25 deg 42.050W, Longitudes 080 deg 05.320N and 080 deg 05.480W.

Ref: LNM 47/06 through 12/07

Chart 11465

LNM: 47/07

FLORIDA - INTRACOASTAL WATERWAY - CHARLOTTE HARBOR TO TAMPA BAY: Hazard to Navigation. (Updated)

The Coast Guard has received a report of a possible submerged object in the vicinity of the center span of the Ringling Bridge.

On February 10, 2006 three (3) temporary buoys were deployed south of the new Ringling Causeway Bridge, in Sarasota Bay to mark submerged rocks that could pose a hazard to navigation during high tides. All three (3) buoys are east of the Gulf Intracoastal Waterway outside of the marked channel. The buoys are a standard, white, cylindrical information buoy. The buoys are anchored in place either on or in close proximity to the submerged rocks.

The buoys are one (1) foot in diameter and approximately 5 1/2 feet tall, marked with a orange diamond shape and worded HAZARD. The approximate positions of the buoys are:

1. 27-19-52.620N 082-33-24.060W
2. 27-19-52.920N 082-33-23.220W
3. 27-19-53.940N 082-33-22.080W

It is requested that all mariners exercise caution when transiting this area.

Ref: LNM 08/06 through 12/07

Chart 11425

LNM: 06/06

SECTION VIII - LIGHT LIST CORRECTIONS

An Asterisk *, indicates the column in which a correction has been made to new information

(1) No.	(2) Name and Location	(3) Position	(4) Characteristic	(5) Height	(6) Range	(7) Structure	(8) Remarks
2620	Hog Island Reach Channel Lighted Buoy 42	32-48-15.559N 079-54-49.931W	FI R 2.5s		4	Red.	13/07
		*			*		
6790	St Marys River Light 2	30-43-41.622N 081-29-25.335W	FI R 4s	12	3	TR on pile.	13/07
		*					

ENCLOSURES

1. North Atlantic Right Whales Warning

U.S. Mandatory Ship Reporting System (WHALE SOUTH)

LNM: 44/06

2. Special Warning Number 123, Somali.

Due to continuing conditions of armed conflict and lawlessness in Somali and waters off its coast, mariners are advised to avoid the Port of Mogadishu and remain at least 200 nautical miles distant from the Somali Coast.

3. Operation On Guard

On Guard Announcement

4. Dredging and Marine Construction

Dredging and Marine Construction List

5. Shoaling and Hazardous Situations

Shoaling and Hazardous Situation List

6. Bridge Construction and Repair/Drawbridge Status

Weekly Updated Status

7. Safe Boating Programs

Auxiliary Programs and Classes

8. Marine Safety Information Bulletin

Possible Submerged Hazards/Demolition Debris in Cooper River.

Chart 11524

LNM: 20/06

9. Marine Safety Information Bulletin

Port of Palm Beach Draft Restriction - Update #1

Chart 11472

10. U.S. Coast Pilot Number 5

Change Number 31

11. U.S. Coast Pilot Number 5

Change Number 32

LNM: 13/07

12. Report of Channel Conditions

Charleston Harbor (Lower)

LNM: 13/07

12. St. Lucie Lock Closure

Okeechobee Waterway, Florida

14. U.S. Coast Guard (Bridge Branch) Public Notice 06-07

Miami Canal, mile 0.95, Miami-Dade County, Florida

LNM: 13/07

D.W. Kunkel
Rear Admiral, U.S. Coast Guard
Commander, Seventh Coast Guard District

NORTH ATLANTIC RIGHT WHALES WARNING (UPDATE VERSION: 20 MARCH 2007)

From December to March the coastal waters between Altamaha Sound, GA, and Sebastian Inlet, FL, are used as calving grounds by the severely endangered North Atlantic Right Whale. The critically endangered right whales, including females with very young calves, may be encountered in offshore and coastal waters. Right whales are slow moving and at risk of serious injury or death due to collisions with vessels. Vessels operators are reminded to use caution and proceed at safe speeds in area used by right whales. Intentionally approaching within 500 yards of right whales is prohibited and is a violation of U.S. Laws. A minimum distance of 500 yards must be maintained from a sighted whale unless hazardous to the vessel or its occupants. NOAA recommends that operators assume that any whale sighting is a right whale.

NOAA also recommends speeds of 10 knots or less in areas used by right whales when consistent with safety of navigation. Please report all right whale sighting and collisions to (305) 862-2850 or the Coast Guard via channel 16. For more information, consult the U.S. Coast Pilot.

U.S. Mandatory Ship Reporting System (WHALESSOUTH)

You are entering essential habitat for the critically endangered right whale. The critically endangered right whale, including females with very young calves may be encountered in offshore and coastal waters. Right whales are slow moving and at risk of serious injury or death due to collision with vessels. Vessel operators are reminded to use caution and proceed at safe speeds in area used by right whales. Intentionally approaching within 500 yards of right whales is prohibited and is a violation of U.S. Laws. A minimum distance of 500 yards must be maintained from a sighted whale unless hazard to the vessel or its occupants. NOAA recommends that operators assume that any whale sighted is a right whale. NOAA also recommends speeds of 10 knots or less in areas used by right whales when consistent with safety of navigation. Please report all right whale sightings and collisions to (978) 585-8473 (Northeast) or (305) 862-2850 (Southeast) or to the U.S. Coast Guard via channel 16. For more information consult the U.S. Coast Pilot.

REPORTING AREA

- a. **WHALESSOUTH:** The geographical boundaries of the southeast reporting system include coastal waters within about 25 nautical miles along a 90 nautical mile stretch of the Atlantic seaboard in Florida and Georgia. The area extends from the shoreline east to longitude 80°51.60'W with the southern and northern boundaries at latitude 30°00.00'N and 31°27.00'N, respectively. NOAA Chart No. 11009.

REPORTING METHOD

- a. Vessels are required to report specific ship information to the Coast Guard upon entry into the reporting area. Direct reports should be made via INMARSAT C to one of the below addresses.
E-mail: RightWhale.MSR@noaa.gov or Telex: 236737831
- b. Vessels not equipped with INMARSAT C should report directly to one of the below addresses via alternate satellite communications equipment.
E-mail: RightWhale.MSR@noaa.gov or Telex: 236737831
- c. Vessels unable to use satellite communications equipment should contact the U.S. Coast Guard Communication Area Master Station, Chesapeake, VA via SITOR/NBDP on 8426.3 kHz, 12590.8 kHz, 16817.8 kHz twenty four hours per day, or 6314.3 kHz from 2300 GMT until 1100 GMT and 22387.8 kHz from 1100 GMT until 2300 GMT.
- d. Vessels unable to use satellite communications or SITOR/NBDP should contact the U.S. Coast Guard Communication Area Master Station, Chesapeake, VA via published voice frequencies.

REPORTING INSTRUCTIONS

- a. Vessels shall report the following information in accordance with the IMO format in Resolution A. 648(16) General Principles for Ship Reporting Systems and Ship Reporting Requirements.

Paragraph	Function	Information Required
System name	System identifier	WHALESSOUTH.
M	INMARSAT number	Vessel INMARSAT number.

A	Ship	Vessel name and call sign.
B	Date, time, and month of report	Six digit group giving day of month and time, single letter indicating time zone, and three letters indicating month.
E	True course	3-digit number indicating true course.
F	Speed in knots and tenths	3-digit group indicating knots and tenths.
H	Date, time, and point of entry into system	Date and time expressed as in (B) and latitude and longitude expressed as a four digit group giving latitude, the letter N indicating north, followed by a /, a five digit group giving longitude, and the letter W indicating west.
I	Destination and ETA	Name of port and arrival time expressed as in (B).
L	Route information	Route information should be reported as either a direct rhumbline to port (RL) and intended speed expressed as in (F), or a series of way points (WP). Vessels reporting waypoints should include latitude and longitude, expressed as in (H), and intended speed between waypoints. For vessels transiting within a traffic separation scheme (TSS), give only the waypoints and intended speed for entry and departure of TSS.

- b. Reports shall follow the prescribed format shown below. Reports should be sent as a direct email to RightWhale.MSR@noaa.gov or telex to **236737831**. Use of batch message routing services may delay receipt of a report. Proper format is required to ensure receipt of reply message. Including extra information, extra characters, or double spacing may result in failure of the system to send a reply message:
- c. Example report for WHALESSOUTH:

```

WHALESSOUTH//
M/412345678//
A/BEAGLE/NVES//
B/270810Z MAR//
E/250//
F/17.0//
H/270810Z MAR/3030N/08052W//
I/MAYPORT/271215Z MAR//
L/RL/17.0//

```

SUBJ: REBROADCAST OF SPECIAL WARNING 123.
UNCLASSIFIED//
MSGID/GENADMIN/NGA NAVSAFETY BETHESDA MD//
RMKS/

SPECIAL WARNING NUMBER 123. SOMALI.

1. DUE TO CONTINUING CONDITIONS OF ARMED CONFLICT AND LAWLESSNESS IN SOMALIA AND WATERS OFF ITS COAST, MARINERS ARE ADVISED TO AVOID THE PORT OF MUQDISHO (MOGADISHU) AND TO REMAIN AT LEAST 200 NAUTICAL MILES DISTANT FROM THE SOMALI COAST. THE U.S. GOVERNMENT DOES NOT HAVE AN EMBASSY IN SOMALIA AND CANNOT PROVIDE SERVICES TO US CITIZENS.
2. RECENT VESSEL HIJACKINGS OFF THE EAST COAST OF SOMALIA DEMONSTRATE THAT PIRATES ARE ABLE TO CONDUCT AT SEA HIJACKINGS FROM AS FAR SOUTH AS KISMAAYO (CHISIMAYU) (00-22S), THOUGH VESSELS ARE ADVISED TO TRANSIT NO CLOSER THAN 02-00S, TO AS FAR NORTH AS EYL (08-00N), AND OUT TO A DISTANCE OF 170 MILES. THE FIRST KNOWN ATTEMPT TO HIJACK A CRUISE VESSEL OCCURRED IN NOVEMBER 2005. ALL MERCHANT VESSELS TRANSITING THE COAST OF SOMALIA, NO MATTER HOW FAR OFFSHORE, SHOULD INCREASE ANTI-PIRACY PRECAUTIONS AND MAINTAIN A HEIGHTENED STATE OF VIGILANCE. PIRATES ARE REPORTED TO HAVE USED PREVIOUSLY HIJACKED SHIPS AS BASES FOR FURTHER ATTACKS.
3. ANOTHER REPORTED PIRATE TACTIC HAS BEEN TO ISSUE A FALSE DISTRESS CALL TO LURE A SHIP CLOSE INSHORE. THEREFORE, CAUTION SHOULD BE TAKEN WHEN RESPONDING TO DISTRESS CALLS KEEPING IN MIND IT MAY BE TAKEN WHEN RESPONDING TO DISTRESS CALLS KEEPING IN MIND IT MAY BE A TACTIC TO LURE A VESSEL INTO A TRAP.
4. VICTIMIZED VESSELS HAVE REPORTED TWO TO THREE (2-3) SPEEDBOATS MEASURING SIX TO NINE METERS (6-9M) IN LENGTH. EACH VESSEL HAS A CREW OF THREE TO SIX (3-6) ARMED MEN WITH AK-47S AND SHOULDER LAUNCHED ROCKETS, WHICH ARE OPENING FIRE ON VESSELS IN BROAD DAYLIGHT IN ORDER TO INTIMIDATE THEM INTO STOPPING.
5. TO DATE, VESSELS THAT INCREASE SPEED AND TAKE EVASIVE MANEUVERS AVOID BOARDING WHILE THOSE THAT SLOW DOWN ARE BOARDED, TAKEN TO THE SOMALI COASTLINE, AND RELEASED AFTER SUCCESSFUL RANSOM PAYMENT, OFTEN AFTER PROTRACTED NEGOTIATIONS OF AS MUCH AS 11 WEEKS.
6. CANCEL SPECIAL WARNING NUMBER 111.//

#5827

BT

NNNN

OPERATION "ON GUARD"

U. S. Coast Guard Marine Safety Office Miami announces Operation "ON GUARD". This operation is designed to employ Coast Guard - active duty, reserve and auxiliary, Federal Bureau of Investigation, US Customs Service, US Immigration and Naturalization Service and the Florida Department of Law Enforcement personnel in response to suspected terrorist activity at the waterfront facilities of the United States. South Florida is extremely vulnerable because it is the terminus of illegal alien and narcotics smuggling routes from the Bahamas, the Caribbean and South America. These routes are well established and are readily available for use by terrorist organizations. An urgent need existed to make the American Public equal partners in the fight on terrorism. Operation "ON GUARD" creates an effective deterrent measure that employs the eyes and ears of the marine industry and the boating public, people that know every inch of the coastline because it is where they work and play. Potential terrorists are put on notice that their activities will be seen and reported.

Operation "ON GUARD" takes a two pronged approach consisting of face to face visits by Coast Guard, FBI, USCS, INS and FDLE personnel combined with a coordinated joint agency media campaign to reach Marina Operators, Marine Dealers, Bridge Tenders, Commercial Fishermen, and the Boating Public. This operation relies on Coast Guard Auxiliary programs already in place like the "Clean Marina" program, Vessel Safety Checks, Marine Dealer Visits and the Commercial Fishing Vessel Safety Program to reach their normal customers, the waterfront users. The public is provided with the toll free number (1.800.424.8802) for reporting suspected terrorist activity to the National Response Center and the 1.800.BE ALERT number for US Customs along with a list of reporting criteria.

Report:

- Suspicious persons conducting unusual activities
- Individuals establishing businesses or roadside food stands in proximity to marina or bridge
- Unknown persons photographing or creating diagrams
- Unknown or suspicious persons loitering for extended periods of time
- Unknown or suspicious persons renting watercraft
- Suspicious vendors attempting to sell/deliver merchandise or drop off packages

For additional information contact: LCDR Armin Cate (305) 535-8735

D. DREDGING AND MARINE CONSTRUCTION OPERATIONS

Location	Type of Work	EST Comp Date	Dredge	Ref LNM
Bahamas	Above Water Cable Ops	UNK	UNKNOWN	10/03
WI-PR- San Juan Harbor	Dredging Ops	MAR07	Dredge 51 (04/07)	12/07
SC-Beaufort	Marine Construction Ops	MAY07	CAPTAIN HARRINGTON	46/06
SC-Charleston Harbor	Dredging Ops	OCT07	HAMPTON ROADS	04/07
FL-Jacksonville Harbor	Dredging Ops	SEP07	ACOE	35/06
FL-Daytona Beach	Dredging Ops	MAY07	Subaqueous Services	51/06
FL-Ponce de Leon Inlet	Hydraulic Dredging	APR07	KRISTI JOE	04/07
FL-Sebastian River	Dredging Ops	2010	Subaqueous Services	05/07
FL-Vero Beach	Beach Nourishment	MAY07	PADRE ISLAND/DODGE ISLAND	05/07
FL-Palm Beach Harbor	Dredging Ops	APR07	ATCHAFALAYA	04/07
FL-St Lucie Inlet	Dredging Ops	APR07	ALASKA	10/07
FL-St Lucie Inlet – Sailfish Point Marina	Dredging Ops	MAR07	Subaqueous (Tug ER Adams)	05/07
FL-St Lucie Inlet to Ft Meyers	Dredging/Renourishment	APR07	Subaqueous ER Adams/Razorback	12/07
FL-KW Harbor & Approaches	Dredging Ops	MAR07	ATCHAFALAYA	12/07
FL-Tampa Bay-Port Sutton	Dredging Ops	MAR07	C.K. HUGGINS	04/07
FL-Tampa Bay-Sparkman Channel	Dredging Ops	MAR07	Misener Marine Construction Inc	45/05
FL-Boca Grande Pass	Beach Renourishment	APR07	BEACHBUILDER	04/07

E. SHOALING AND HAZARDOUS SITUATIONS

Location	Waterway	Significant Information	Chart Ref LNM
SC	Seacoast	Charleston Harbor Ocean Dredged Material Disposal Site (ODMDS) higher than charted depths, minimum depth may be 18 feet.	11521 09-01
SC	Little River Inlet	A 47 ft tug sank in approx position 33-50.1N 078-32.8W and is marked with a lighted buoy	11535 29-03
SC	Winyah Bay	Shoaling has been reported in position 33-13-00N 079-11-50W in the vicinity of Georgetown Lighthouse (LLNR 20) the depth of the water was reported at 27 feet.	11535 50-01
SC	Charleston Hbr	Severe shoaling in center of channel datum at depth of 5.5 MLW between Mt. Pleasant Channel DB 1 (LLNR 3510) and Mt. Pleasant Channel DB 2 (LLNR 3515).	11523 31-03
SC	Cooper River	A midstream transfer facility is conducting continued operations in the vicinity of Naval Weapons Station near the TC dock. Operations are outside the marked navigation channel and should not impede navigation.	11524 36-03
SC	Cooper River	Concrete and rock reported at the 40 foot depth on both sides of the navigation channel adjacent to the manmade islands directly under the I-526 Bridge.	11524 49-02
SC	Cooper River	A conveyor extends approx 20 ft into Town Creek beneath Cooper River bridges.	11524 13-02
SC	Folly River	Obstruction (steel H beam) reported 50-70 yds outside marked channel and outeast of FOLLY RIVER LB 2 (LLNR 3735) at low tide	11522 06-02
SC	Beaufort River	Continued shoaling to depths of 6.5 feet in the vicinity from WHITE POINT LT 110 (LLNR 34945) through Dawho River Buoy113 (LLNR 34960)	11518 30-01
SC	Cooper River	Submerged Obstruction reported in the vicinity of the Cooper River Bridge in approximate position 32-48-12.600N 079-55-03.400W	11524 10-01
SC	Cooper River	Shoaling to depths of 8 feet above charted datum reported in the vicinity of Cooper River Range "D" at the Naval Weapons Station.	11524 19-01
SC-ICW	Winyah Bay	Shoaling has been reported along Range E, Entrance Channel to Georgetown, SC	11534 06-06
SC-ICW	Brickyard Creek	A new shoal extends out of channel on green side between Brickyard Creek Daybeacon 209 (LLNR 35325) and Brickyard Creek Daybeacon 211(LLNR 35335). Water depth at low tide is reported at 2.6 feet.	11507 17-04
SC-ICW		Severe reported shoaling between Hell's Gate Daybeacon 89 (LLNR 36279) and Hell's Gate Light 92 (LLNR 36290).	11507 17-06
SC-ICW	Port Royal Sound	Severe shoaling has been reported in various located in the ICW between Port Royal Sound, SC and Fernandina, FL. (See LNM 31/05 for Channel Conditions).	31-05
GA-ICW	Vernon River	Shoaling has been reported in the middle of channel from Raccoon Key LB 78 (LLNR 36265) and Hells gate LT 91 (LLNR 36285)	11507 17-04
GA	St Catherinres Snd	Shoaling reported in vicinity of St Catherines Snd LB 2 (LLNR 5795)	11511 33-06
GA	Darien River	Shoaling has been reported between Darien River Buoy 12 (LLNR 36826.3) and Darien River Buoy 14 (LLNR 36826.4). Water depth reported 5 feet low tide.	11507 06-04
GA	Doboy Sound	Shoal 500 yards WNW of DOBOY SOUND LT 8 (LLNR 5945).	11510 35-00
GA	Mackay River	Piling marked by white strobe light is protruding one foot above waterline in center of channel	11510 17-02
GA	St Andrew Sound	Shoaling reported in vicinity of St Andrew Sound Buoy 2 (LLNR 6410). Depth reported 4 feet.	11508 23-04
GA	Jekyll Creek	Shoaling to a depth of 7 feet at the centerline has been reported throughout Jekyll Creek	11489 31-01
GA ICW	Savannah River	Shoaling reported in the area between Elba Island Cut LT 2 (LLNR 35880) and Elba Island Cut LT 4 (LLNR 35885), Soundings shows the depth between two and four feet, approx 20 yards into the channel between the aids.	11507 01-05
GA ICW	Jekyll Creek	Shoaling has been observed between Jekyll Creek LT 20 (LLNR 37345) and Jekyll Creek LT 20A (LLNR 37346). Water depth reported 5 feet at low tide.	11489 06-04
FL East Coast	Amelia River	Extensive shoaling reported in the vicinity of South Amelia River DBN 34 (LLNR 38100)	11489 34-01
FL East Coast	Amelia Island	An unlit pier extends into the South Amelia River at LIGHT 29 (LLNR 38080) in approx position 30-35-09N 081-27-18W	11489 04-03
FL East Coast	St Johns River	Shoaling has been reported in the channel south of Mt Royal Light 63 (LLNR 8510) to Fort Gates Light 65 (LLNR 8520). Depth reported at low water is 4 feet.	11495 24-06
FL East Coast	Ortega River	Submerged pilings on west bank of upper Ortega River extending out approx 150 ft.	11492 17-02
FL East Coast	St. Augustine	5 foot in diameter unlighted buoy anchored in 27-38-20N 080-13-15W.	11474 04-01
FL East Coast	Lake George	Obstructions reported 100 yards west and 100 yds NW of Lake George South End Range Front Light (LLNR 8775).	11495 05-03
FL East Coast	Halifax River	Shoaling to an unknown depth has been reported in the vicinity of Halifax River Daybeacon 68 (LLNR 40470) and Halifax River Daybeacon 70 (LLNR 40480). The shoaling is reported to extend 40 yards from the west bank of the channel.	11485 19-01
FL East Coast	Halifax River	Shoaling to a depth of 3 feet in the vicinity of Halifax River DBN 30 (LLNR 40000) Increasing to a depth of 8 feet, 20 yards to the east of the DBN	11485 28-01
FL East Coast	Matanzas Coast	66 F/V sunk in position 29-03-09N 080-52-06W.	11484 43-00
FL East Coast	Matanzas River	Shoaling reported in Mantanzas River, north of Mantanzas bridge on west side of channel Approx 20 feet into channel.	11485 09-05
FL East Coast	Matanzas River	Shoaling reported with soundings of 9 feet at low tide trying to close itself in between <u>MATANZAS RIVER LIGHT 1</u> (LLNR 39035) and Matanzas River B 2 (LLNR 39040).	11485 37-03
FL East Coast	Matanzas River	Shoaling has been reported in the vicinity Matanzas River DBN 3 (LLNR 18090)	11427 29-01

FL East Coast	Ponce de Leon	Reported depths are 9.3 feet approx 300 feet WNW of DBN. Shoaling has been reported in the vicinity of Ponce de Leon Inlet. The following temporary buoys have been established to mark best water. Ponce de Leon Inlet Buoys 5A, 7A, and 10A.	11485 09-06
FL East Coast	Sebastian Inlet	A 207ft coastal freighter sank in approx position 26-0610N 080-01-15W.	11451 24-03
FL East Coast	Kissimee River	A Submerged piling has been reported in position 28-13-00.00N 081-23-00.000W in Lake Tohopekaliga, Osceola County, FL.	XXXX 35-04
FL East Coast	Stuart	A tug and barge have sunk on east side of north/south jetty of St. Lucie Inlet. in approximate location 27-10-06N 080-08-58W.	11472 50-02
FL East Coast	Jupiter Inlet	An unlit mooring ball with letters "PBSC" in approx position 26-42.12N 080-01.54W	11466 29-03
FL East Coast	Singer Island	Shoaling has been reported in the vicinity of Singer Island Daybeacon 1 (LLNR 10211) A temporary unlighted buoy has been placed in AP 26-46-28.544N 080-02-24.413W	11472 08-06
FL East Coast	Boca Raton Inlet	Report of 5 ft steel mooring buoy anchored approx 220 yds southeast of Boca Inlet.	11467 17-02
FL East Coast	Boca Raton Inlet	Severe shoaling reported at the entrance to Boca Raton inlet.	11466 20-05
FL East Coast	Malloy Channel	Report of 80-100 ft black pipe obstructing channel 100 yds north of Miami Yacht Club	11467 21-02
FL West Coast	South Seas	Shoaling between South Seas Plantation Daybeacon 5 (LLNR 55730 Plantation and South Seas Plantation Daybeacon 21 (LLNR 55880).	11427 12-01
FL West Coast	Fort Myers	A partially submerged piling only visible at low tide approximately 5 ft away from Cape Coral Rim Channel DBN 65 (LLNR 53190) located in 26-33-49.773N 081-55-59.117W.	11427 50-02
FL AICW	Matanzas River	Shoaling has been reported north of Matanzas River Bridge, west side. Depth of 5 feet reported in position 29-33-45.571N 081-11-06.481W	11485 09-05
FL AICW	Ponce de Leon Cut	Shoaling has been reported in the vicinity of Ponce de Leon Cut Junction DBN (40615) to Ponce de Leon Cut DBN 18 (LLNR 40610). Water depth in marked channel is 6 feet at low tide.	11485 10-06
FL-AICW	Indian River (SS)	Shoaling exist across entire channel between Indian River (SS) Daybeacon 184 (LLNR 45085) and Daybeacon 186 (LLNR 45110). Report depths of 5 feet at low tide.	11485 31-00
FL AICW	Boynton Inlet	Heavy shoaling near Lake Worth DBN 46 (LLNR 47015).	11467 31-00
FL-AICW	Hillsboro Inlet	Shoaling has reported in Ocean Park Channel between Daybeacon 1 (LLNR 47040) and Daybeacon 8 (LLNR 47075).	11467 08-06
FL-AICW	Lake Worth inlet	Shoaling has been reported along the north side of Entrance Channel	11474 35-04
FL AICW	Venice Inlet	Shoaling 600 yards North and 200 yards South of the Albee Bridge.	11425 31-00
PR	Vieques Snd Culebra	A submerged offshore mariculture site has been established 2 miles southeast of Culebra Island and is outlined by coordinates 18-16.67N 065-20W, 18-16.4N 065-19.72W	25650 32-02

A. BRIDGE CONSTRUCTION/REPAIR

Location	Type of Work	EST Comp Date	Bridge	Ref LNM
SC-Charleston Hbr-Cooper Riv	Bridge Construction	NOV 07	Grace Memorial Bridge	48-02
SC-Charleston Hbr-Cooper Riv-Town Cr	Bridge Construction	NOV 07	Silas N. Pearman Bridge	48-02/34-06
SC-Charleston Hbr-Cooper Riv Bridges	Demolition	NOV 07	Grace Memorial/Pearman	34-05/34-06
GA-Turtle Riv/Gibson Cr	Bridge Construction	OCT 09	I-95 Bridges	49-06
FL-St. Johns Riv-Jacksonville	Demolition	MAR 07	Fuller Warren Bridge	47-06
FL-St. Johns Riv-Pineda	Bridge Painting	OCT 07	Matthews Bridge	05-07
FL-St. Johns Riv-Trout Riv	Bridge Construction	MAR 08	I-95 Bridge	12-05
FL-ICW-Jacksonville Bch	Bridge Construction	FEB 09	McCormick (Beach Blvd)	34-06
FL-ICW-St. Augustine	Bridge Construction	JAN 08	Bridge of Lions Bridge	21-05/08-07
FL-ICW-Indian Riv-Pineda	Bridge Repairs	APR 07	Pineda Cswy Bridge A	34-06
FL-ICW-Banana Riv-Sykes Cr	Bridge Repairs	APR 07	SR 528	47-06
FL-ICW-W Palm Bch	Bridge Repairs	APR 07	PGA Blvd Bridge	23-05/09-07
FL-ICW-Hollywood	Bridge Repairs	JUL 07	Hollywood Blvd Bridge	34-06/09-07
FL-ICW-Biscayne Bay-Indian Ck	Bridge Repairs	JUN 07	E 63 rd St Bridge	34-06/10-07
FL-ICW-Biscayne Bay-Indian Ck Canal	Bridge Repairs	MAR 07	W 63 rd St Fixed Bridge	36-06
FL-ICW-Key Largo	Bridge Repairs	DEC 07	Card Sound Rd Bridge	12-07
FL-ICW-Jewfish Cr	Bridge Construction	APR 08	Jewfish Cr Bridge	12-07
FL-ICW-Okeechobee-Port Mayaca R/R	Bridge Repairs	APR 07	Port Mayaca R/R Bridge	12-07
FL-ICW-Okeechobee-Sanibel	Bridge Construction	JUN 07	Sanibel Cswy Bridge	27-05
FL-Anna Maria Sound-Bimini Bay	Bridge Construction	APR 07	Key Royale Dr Bridge	23-06
FL-ICW-Treasure Island	Bridge Construction	MAY 07	Treasure Island Bridge	10-07/12-07
FL-Johns Pass	Bridge Construction	JAN 09	Johns Pass Bridge	07-06/08-06

B. DRAWBRIDGE STATUS SUMMARY

The following is a list of known drawbridge discrepancies, restrictions, and closures in navigable waters of the Seventh Coast Guard District. Additional information regarding bridges can be found in Volume 4 (Cape Henry to Key West) or volume 5 (Gulf of Mexico, Puerto Rico and Virgin Islands) of the U.S. Coast Pilot, 33 CFR 117, or by calling (305) 415-6743. Unless otherwise noted in the date column, the described status will be in effect until further notice. Mariners knowing of bridge activities not listed below are urged to notify the nearest Coast Guard unit.

BRIDGE	LOCATION	DATE	STATUS	REF
PGA	AICW, W Palm Bch, FL	Until Apr 31, 07	Single-leaf Ops/Special Regs	10-07/12-07
Hollywood Blvd	AICW, Hollywood, FL	Until Jul 27, 07	Single-leaf Ops/Special Regs	09-07/12-07
63 rd St	Indian Cr, Miami, FL	Until Jun 19, 07	Hourly Openings/Special Regs	10-07/12-07
Treasure Isl	GICW, Treasure Is, FL	Until May 18, 07	Single-leaf Ops	12-07

C. BRIDGE INFORMATION.

GEORGIA – BRUNSWICK HARBOR – SIDNEY LANIER BRIDGE: Marine Safety.

The horizontal clearance of the Sidney Lanier Bridge as charted has been reported to be inaccurate. The navigation lighting on the main structure has also been reported to be inaccurate. Mariners should exercise extreme caution when passing through this structure. The Coast Guard is investigating.

Ref: LNM 06 through 12-07

Chart: 11506

FLORIDA – ST JOHNS RIVER – JACKSONVILLE – FULLER WARREN BRIDGE: Bridge Demolition.

The Captain of the Port Jacksonville advises all mariners that the navigable channel in the vicinity of the Old Fuller Warren Bridge will be periodically restricted for ongoing bridge demolition until March 31, 2007. The navigable channel will be restricted to a 100 foot horizontal clearance from 7:00 a.m. to 5:30 p.m. during that time. Mariners requiring more than 100 foot horizontal clearance may request a full channel opening by contacting the Tug ST JOHNS and/or Tug BANTAM on VHF-FM channel 13, two hours in advance. All marine traffic should take caution when passing through this portion of the St. Johns River.

Ref: LNM 46-06 through 12-07

Chart: 11491

FLORIDA – ST JOHNS RIVER – JACKSONVILLE – MATTHEWS BRIDGE: Painting Operations.

The vertical clearance of the Matthews Bridge, St Johns River mile 21.4, Jacksonville, Florida has been reduced by five feet until October 31, 2007, due to painting.

Ref: LNM 05 through 12-07

Chart: 11491

FLORIDA – ST JOHNS RIVER – JACKSONVILLE – TROUT RIVER BRIDGE: Bridge Demolition.

Hal Jones Contractor has advised the Coast Guard that demolition of the Trout River Bridge will start on December 21, 2006 and will continue for several months. This activity is not affecting the navigable channel at this time. Future updates will be provided via Broadcasts and Local Notice to Mariners.

Ref: LNM 51-06 through 12-07

Chart: 11491

FLORIDA – LOSTMANS RIVER TO WIGGINS PASS– ROBERTS BAY – WINTERBERRY WATERWAY– MARCO ISLAND: Final Rule.

The Coast Guard is changing the operating regulation governing the operation of the Outer Clam Bay Boardwalk Drawbridge, mile 0.3, near North Naples in Collier County, Florida. The rule will require the drawbridge to open on signal, with at least 30 minutes advance notice. This rule will allow the unrestricted movement of pedestrian traffic while providing for the reasonable needs of navigation. This rule is effective April 13, 2007.

FOR FURTHER INFORMATION CONTACT: Mr. Barry Dragon, Seventh Coast Guard District, Bridge Branch, telephone number 305-415-6743 or email Michael.b.lieberum@uscg.mil

Ref: LNM 46-06 and Federal Register Docket #CGD07-06-237
Chart: 11430

CG File: 3741

SOUTH CAROLINA – ATLANTIC INTRACOASTAL WATERWAY - BEAUFORT RIVER TO ST. SIMONS SOUND – SKULL CREEK – SC HIGHWAY 278 BRIDGE: Bridge Repairs.

The South Carolina Department of Transportation is conducting bridge repairs on the fender system of the SC Highway 278 Bridge over Skull Creek, Intracoastal Waterway mile 557.6, Hilton Head, South Carolina until May 1, 2007. There is a barge on scene monitoring VHF-FM channels 13 and 16. All mariners are advised to use the north side of the channel and exercise caution while transiting this area.

Ref: BNM 028-07-CHA and LNM 05 through 12-07
Chart: 11507

CG File: 1110

FLORIDA – ATLANTIC INTRACOASTAL WATERWAY – ST AUGUSTINE – BRIDGE OF LIONS: Bridge Construction.

Construction of the Bridge of Lions, Intracoastal Waterway mile 797.9, St. Augustine, Florida will continue until January 30, 2008. Please see the enclosed closure schedule for this bridge work.

Ref: LNM 18, 21-05 through 12-07

Chart: 11489

FLORIDA – ATLANTIC INTRACOASTAL WATERWAY – LAKE WORTH INLET TO JUPITER INLET – PGA BOULEVARD BRIDGE: Bridge Repairs.

If further drawbridge restrictions/waterway restrictions are needed for the PGA Boulevard Bridge (SR 786), Intracoastal Waterway mile 1012.6, West Palm Beach, Florida, the information will be Broadcast and published in future Local Notice to Mariners.

Ref: LNM 23-06 through 12-07, BNM 276-05-MIA and Federal Register Docket # CGD07-07-021
Chart: 11467

CG File: 3132

FLORIDA – ATLANTIC INTRACOASTAL WATERWAY – WEST PALM BEACH TO MIAMI – HOLLYWOOD BOULEVARD BRIDGE: Bridge Construction.

The Hollywood Boulevard Bridge, Intracoastal Waterway mile 1072.2, Hollywood, Broward County, Florida is on single-leaf operations on the hour and half-hour from April 17, 2006 to July 27, 2007 with a double-leaf opening will be available with a two-hour notice to the bridge tender, except as noted below. The horizontal clearance will be reduced to 50 feet during this time period.

Additionally, the Hollywood Boulevard Drawbridge will be on single-leaf operations only on the hour and half-hour:

From March 14 through March 21, 2007, from 4:00 a.m. on March 26 to 12 noon on March 27, 2007, and from 4:00 a.m. on April 3 to 12 noon on April 4, 2007.

These restrictions are necessary to facilitate the containment system during the paint removal and re-painting of this bascule bridge.

LNM 15-06 through 12-07 and Federal Register Docket # CGD07-06-204
Chart: 11467

CG File: 2899

FLORIDA – ATLANTIC INTRACOASTAL WATERWAY – WEST PALM BEACH TO MIAMI – JULIA TUTTLE CAUSEWAY BRIDGE: Bridge Repairs.

M & J Construction has advised that due to upcoming bridge repairs there will be a barge located outside the channel limits on the northwest side of the Julia Tuttle Causeway Bridge across the Intracoastal Waterway mile 1087.1, Miami, Miami-Dade County, Florida. Mariners are requested to maintain slow speed through this area.

Ref: LNM 52-06 through 12-07
Chart: 11467

CG File: 3004

FLORIDA – ATLANTIC INTRACOASTAL WATERWAY – WEST PALM BEACH TO MIAMI – BISCAYNE BAY – INDIAN CREEK – 63rd STREET BRIDGE: Bridge Repairs/Closures.

The 63rd Street Bridge, Indian Creek mile 4.0, Miami Beach, FL will open a single-leaf on the top of the hour from 8:00 am to 5:59 p.m. and a double-leaf on the top of the hour between 6:00 p.m. and 12:10 a.m. until June 19, 2007. This bridge will be closed to navigation at all other times.

Additionally, the 63rd Street Bridge will be closed to navigation as follows:

March 27 through 30, 2007 and April 9 through 12, 2007, due to steel erection. These closures are necessary to protect vessels passing through this area and for workers safety.

Ref: LNM 27-06 through 12-07, BNM 367, 454-06-MIA and
Federal Register Docket # (CGD07-06-041)

CG File: 2362
Chart: 11467

FLORIDA – ATLANTIC INTRACOASTAL WATERWAY – MIAMI RIVER – SPRING GARDEN BRIDGE: Bridge Repairs.

The Spring Garden Bridge across the Seybold Canal, Miami River, Miami, Florida will be closed to navigation until approximately March 31, 2007. If you require passage through this bridge during construction hours, please provide two hours notice to:

Marcia Lopez - mlopez@miamigov.com , Phone # 305-416-1063
Zimri Prendes – zprendes@miamigov.com , Phone # 305-416-1284
Danette Perez – daperez@miamigov.com , Phone # 305-416-1286

Ref: LNM 03 through 12-07

Chart: 11467

FLORIDA – ATLANTIC INTRACOASTAL WATERWAY – MIAMI TO JEWFISH CREEK – CARD SOUND ROAD BRIDGE: Bridge Repairs.

The vertical clearance of the Card Sound Road Bridge, across the Atlantic Intracoastal Waterway, Key Largo, Florida will be reduced by five feet due to painting operations from April 2 until December 30, 2007. The contractor will change the clearance gauges on the bridge to reflect the proper clearance under the bridge. There will be barge in the vicinity of the bridge at all times; therefore, mariners are requested to operate at minimum speed in the vicinity of this bridge.

Ref: LNM 12-07

Chart: 11451

FLORIDA – ATLANTIC INTRACOASTAL WATERWAY – MIAMI TO JEWFISH CREEK – JEWFISH CREEK BRIDGE: Bridge Construction.

Work continues on the new Jewfish Creek Bridge, across the Atlantic Intracoastal Waterway, Jewfish Creek, Florida. The contractor is not anticipating any channel closures at this time; but will have floating equipment in the vicinity of Jewfish Creek and Lake Surprise from April 2, 2007 until April 30, 2008. Mariners are requested to proceed at slow speed minimum wake through this location.

Ref: LNM 12-07

Chart: 11451

FLORIDA – OKEECHOBEE WATERWAY – ST. LUCIE CANAL – PORT MAYACA RAILROAD BRIDGE: Bridge Closure.

The Port Mayaca Railroad Bridge, across the St. Lucie Canal, Port Mayaca, Florida will open to navigation with a one-hour notice to the bridge tender from April 8 through April 29, 2007, due to maintenance. Mariners will be advised via Broadcast Notice to Mariners when this bridge will be closed to navigation for short periods.

Ref: LNM 12-07

Chart: 11428

FLORIDA – OKEECHOBEE WATERWAY – CALOOSAHATCHEE RIVER – SAN CARLOS BAY - SANIBEL CAUSEWAY BRIDGE: Bridge Construction.

Work continues on the Sanibel Causeway Bridge across the Caloosahatchee River, Sanibel, Lee County, Florida. Due to this bridge construction the vertical clearance has been reduced to 68 feet.

Ref: BNM 1486-06-STP and LNM 25-05 through 12-07

Chart: 11428

FLORIDA – OKEECHOBEE WATERWAY – CALOOSAHATCHEE RIVER – SAN CARLOS BAY - SANIBEL CAUSEWAY BRIDGES, Span A and C: Temporary Safety Zone.

Sec. 165.T07-219 Safety Zone; Ft. Myers Beach, Florida.

- (a) Regulated area. The Coast Guard is establishing a temporary safety zone on the waters of San Carlos Bay, Florida, in the vicinity of the Sanibel Island Bridge span "A". This safety zone includes all waters from surface to bottom, within a 400 foot

Chart: 11411

SAFE BOATING AND SEAMANSHIP PROGRAMS

For addition information on CG Auxiliary Public Education Boating Programs, contact 1-800-336-2628 or <http://www.cgaux7.org/>

HOST	DATES	TIME	LOCATION
U.S. Coast Guard Auxiliary Flotilla 42 (321) 773-7599	Continuous Boating Skills and Seamanship	7:30 p.m.– 9:30 p.m. (Tuesdays & Thursdays) 6 Weeks, 12 Lessons	Palm Bay Community Ctr 1502 Port Malabar Blvd Palm Bay, FL
U.S. Coast Guard Auxiliary Flotilla 78 (727) 360-7496	Continuous Boating Skills and Seamanship	7:30 p.m.– 9:30 p.m. (Mondays) 13 Weeks	Webster Community Ctr 1500 Passe Grille Blvd St Petersburg, FL
U.S. Coast Guard Auxiliary Flotilla 79 (813) 855-6997	Continuous Boating Skills and Seamanship	7:30 p.m.– 9:30 p.m. (Wednesdays) 13 Weeks	5108 Gandy Blvd Salty Sol Boat Ramp Tampa, FL
U.S. Coast Guard Auxiliary Flotilla 7-16 (727) 323-5950	Continuous Boating Skills and Seamanship	7:30 p.m.– 9:30 p.m. (Tuesdays) 13 Weeks	USCG Auxiliary Bldg 3120 Miriam St South Gulfport, FL
U.S. Coast Guard Auxiliary Flotilla 51 (561) 844-3114	Continuous Boating Skills and Seamanship	7:30 p.m.– 9:30 p.m. (Tuesdays & Thursdays) 6 Weeks, 12 Lessons	CG Aux Bldg, P Foster Park 900 E. Blue Heron Blvd Riviera Beach, FL
U.S. Coast Guard Auxiliary Flotilla 55 (561) 585-8918	Continuous Boating Skills and Seamanship	7:00 p.m.– 9:00 p.m. (Mondays & Wednesdays) 6 Weeks, 12 Lessons	Santaluces High School Lawrence Road Lantana, FL
U.S. Coast Guard Auxiliary Flotilla 52 (772) 744-3876	Continuous Boating Safety Program	9:00 a.m.– 5:00 p.m. (Last Saturday of Each Month)	CG Aux Building Jupiter Lighthouse Park Jupiter, FL
U.S. Coast Guard Auxiliary Flotilla 81 (941) 761-4303/761-7393	Continuous Boating Skills and Seamanship	7:00 p.m.– 9:00 p.m. (Tuesdays & Thursdays) 4 Weeks	CG Aux Bldg, G.T.Bray Park 5801 53 rd Ave Court W Bradenton, FL
U.S. Coast Guard Auxiliary Flotilla 14-08 (904) 721-1346	Continuous Boating Safety Program	7:30 a.m.– 5:00 p.m. (Saturdays)	Stellar Building 2900 Hartley Road Jacksonville, FL
U.S. Power Squadron Fort Lauderdale (954) 523-3577	Continuous Basic Safe Boating Course	7:00 p.m. – 9:00 p.m. (1 st Monday of each month)	Lauderdale Marine Ctr 2029 SW 20 th Street Fort Lauderdale, FL
U.S. Coast Guard Auxiliary Flotilla 11-1 (727) 469-8895	Continuous America's Boating Course	7:30 p.m. – 9:30 p.m. (Mondays and Thursdays)	Clearwater Comm Sailing Ctr 1001 Gulf Blvd Sand Key (Clearwater), FL Plantation, FL
U.S. Coast Guard Auxiliary Flotilla 36 (561) 391-3600	March, 24, 2007 America's Boating Course	9:00 a.m. – 1:00 p.m. (Saturday)	Marine Safety Building 3939 N. Ocean Blvd Boca Raton, FL
U.S. Coast Guard Auxiliary Flotilla 36 (561) 391-3600	March, 31, 2007 America's Boating Course	9:00 a.m. – 1:00 p.m. (Saturday)	Marine Safety Building 3939 N. Ocean Blvd Boca Raton, FL
U.S. Coast Guard Auxiliary Flotilla 65 (305) 667-8030	April 2, 2007 – April 26, 2007 Boating Skills and Seamanship	7:00 p.m.– 9:00 p.m. (Mon & Thur) 8 Lessons	Elks Lodge 6304 SW 78 th Street Miami, FL

U.S. Coast Guard Auxiliary Flotilla 69 (305) 935-3769	April 3, 2007 – April 19, 2007 Boating Skills and Seamanship	7:30 p.m.– 9:30 p.m. (Tues, Wed, & Thur) 3 Weeks	Aventura Comm Ctr 3375 NE 188 th Street Aventura, FL
U.S. Coast Guard Auxiliary Flotilla 36 (561) 391-3600	April 7, 2007 GPS for Navigators	9:00 a.m. – 4:00 p.m. (Saturday)	Marine Safety Building 3939 N. Ocean Blvd Boca Raton, FL
U.S. Power Squadron Cutler Cove (305) 238-4807	Starting April 10, 2007 Safe Boating Course	7:00 p.m. – 9:30 p.m. 5 Weeks	Palmetto Middle School 7351 SW 128 th Street Miami, FL
U.S. Coast Guard Auxiliary Flotilla 68 (954) 916-5601	April 14, 2007 Boating Safety Program	9:00 a.m.– 5:00 p.m. (Saturday) 1 Day	Plantation Comm Center N. Ent Broward Mall University & Broward Blvd Plantation, FL
U.S. Coast Guard Auxiliary Flotilla 36 (561) 391-3600	Starting April 16, 2007 Boating Skills and Seamanship	7:00 p.m. – 9:00 p.m. (Mondays)	Boca Raton Middle School Boca Raton, FL
U.S. Coast Guard Auxiliary Flotilla 67 (305) 274-9829	April 17, 2007 – May 17, 2007 Boating Skills and Seamanship	7:00 p.m.– 9:00 p.m. (Tues & Thur) 10 Lessons	Palmetto High School 7460 SW# 118 th Street Pinecrest, FL
U.S. Coast Guard Auxiliary Flotilla 67 (305) 274-9829	April 21, 2007 America's Boating Course	9:00 a.m.– 6:00 p.m. (Saturday) 1 Day	Miami Bch Police Dept 1100 Washington Ave Miami Beach, FL
U.S. Coast Guard Auxiliary Flotilla 6-11 (305) 259-5144	May 16, 2007 – June 27, 2007 Boating Skills and Seamanship	7:00 p.m.– 9:00 p.m. (Mon & Wed) 14 Lessons	Westchester West Marine 8687 Coral Way Miami, FL
U.S. Coast Guard Auxiliary Flotilla 67 (305) 274-9829	May 19, 2007 America's Boating Course	9:00 a.m.– 6:00 p.m. (Saturday) 1 Day	Miami Bch Police Dept 1100 Washington Ave Miami Beach, FL
U.S. Coast Guard Auxiliary Flotilla 65 (305) 667-8030	June 4, 2007 – June 28, 2007 Boating Skills and Seamanship	7:00 p.m.– 9:00 p.m. (Mon & Thur) 8 Lessons	Elks Lodge 6304 SW 78 th Street Miami, FL
U.S. Coast Guard Auxiliary Flotilla 69 (305) 935-3769	June 5, 2007 – June 21, 2007 Boating Skills and Seamanship	7:30 p.m.– 9:30 p.m. (Tues, Wed, & Thur) 3 Weeks	Aventura Comm Ctr 3375 NE 188 th Street Aventura, FL
U.S. Coast Guard Auxiliary Flotilla 6-11 (305) 259-5144	July 18, 2007 – Aug 29, 2007 Boating Skills and Seamanship	7:00 p.m.– 9:00 p.m. (Mon & Wed) 14 Lessons	Westchester West Marine 8687 Coral Way Miami, FL
U.S. Coast Guard Auxiliary Flotilla 65 (305) 667-8030	Aug 6, 2007 – Aug 30, 2007 Boating Skills and Seamanship	7:00 p.m.– 9:00 p.m. (Mon & Thur) 8 Lessons	Elks Lodge 6304 SW 78 th Street Miami, FL
U.S. Coast Guard Auxiliary Flotilla 69 (305) 935-3769	Aug 7, 2007 – Aug 22, 2007 Boating Skills and Seamanship	7:30 p.m.– 9:30 p.m. (Tues, Wed, & Thur) 3 Weeks	Aventura Comm Ctr 3375 NE 188 th Street Aventura, FL

U.S. Coast Guard Auxiliary
Flotilla 6-11
(305) 259-5144

Sep 19, 2007 – Oct 31, 2007
Boating Skills and Seamanship

7:00 p.m.– 9:00 p.m.
(Mon & Wed)
14 Lessons

Westchester West Marine
8687 Coral Way
Miami, FL

U.S. Coast Guard Auxiliary
Flotilla 65
(305) 667-8030

Oct 8, 2007 – Nov 1, 2007
Boating Skills and Seamanship

7:00 p.m.– 9:00 p.m.
(Mon & Thur)
8 Lessons

Elks Lodge
6304 SW 78th Street
Miami, FL

Programs are free; there is a nominal fee for text workbooks, etc.



U. S. Department of Homeland Security
U. S. Coast Guard Sector Charleston
Marine Safety Information Bulletin



MSIB 049-06

10 MAY 2006

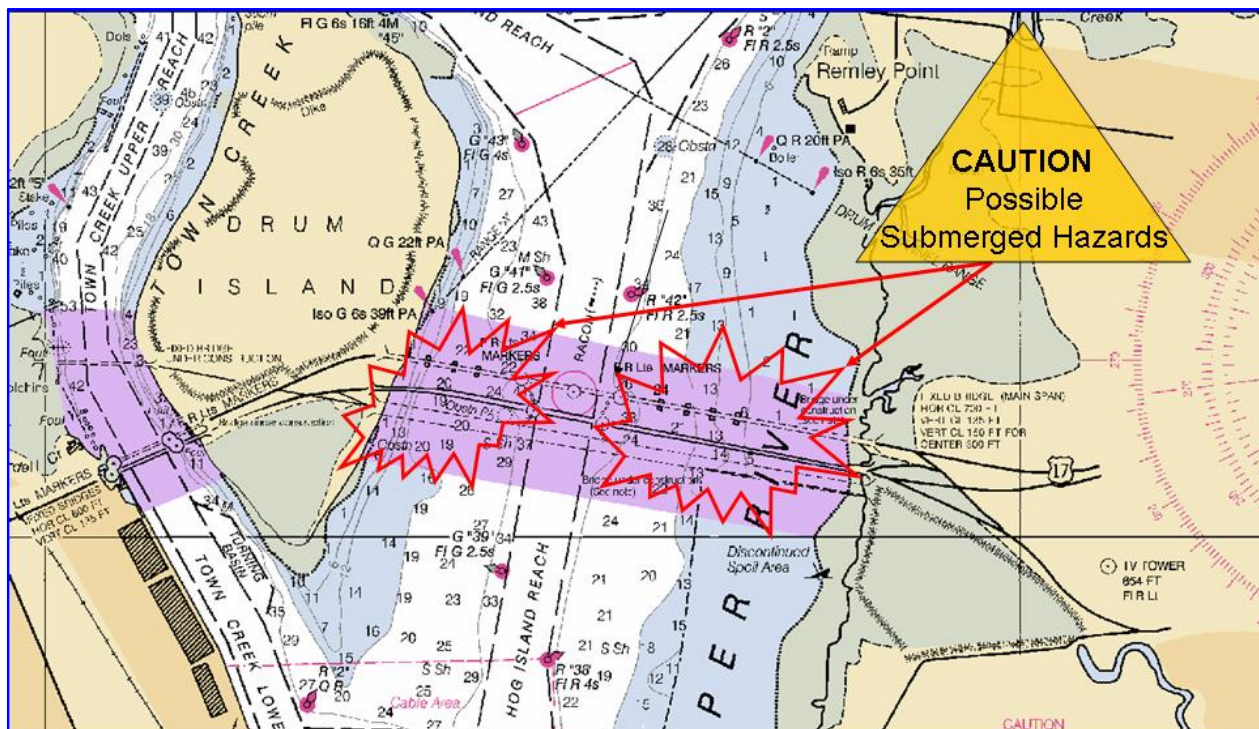
**POSSIBLE SUBMERGED HAZARDS/DEMOLITION DEBRIS IN COOPER RIVER
SHALLOWS FOR DURATION OF GRACE AND PEARMAN BRIDGE DEMOLITION**

Boaters are advised to stay in the main channel when transiting under the new Ravenel Bridge on the Cooper River. The South Carolina Department of Transportation and their demolition contractor are in the process of removing the remaining foundations for the Grace and Pearman bridges. This project will continue into 2007. During this period, there is the possibility of both partially submerged hazards and demolition debris in the areas outside the main channel. The contractor's work area will be marked with temporary buoys, but these buoys may not be visible at night. To avoid hazards boaters should transit only through the main Cooper River channel (HOG ISLAND REACH) or should consider using Town Creek channel as an alternate route.

Boaters are also reminded to obey Navigation Rule 9 and give large ships the right of way while in or planning to cross the main channel. Vessels less than 20 meters long, and sailing vessels, shall not impede the passage of a vessel that can safely navigate only within a narrow channel.

The U.S. Coast Guard has designated the waters under the old and new bridges as a Regulated Navigation Area (shown below in purple). All vessels are prohibited from anchoring, mooring, or loitering within the regulated area, unless specifically authorized by the U.S. Coast Guard.

Boaters should contact Coast Guard Sector Charleston's 24x7 operations center on VHF channel 16 or via phone at (843) 724-7616 to report any concerns or ask any questions about this notice.



“You’re in Command. Please Boat Responsibly!”

U.S. Department of
Homeland Security

United States
Coast Guard



Commander
United States Coast Guard
Sector Miami

100 MacArthur Causeway
Miami Beach, FL 33139-6940
Phone: 305-535-8701
FAX: 305-535-8740

Marine Safety Information Bulletin

Port of Palm Beach Draft Restriction – Update #1

Time: 1600/Date: September 11, 2006

The Army Corps of Engineers has completed soundings of the Lake Worth Inlet entrance channel and found shoaling caused by Tropical Depression ERNESTO to be extensive throughout the area. The Captain of the Port has imposed a draft restriction of 28 feet at high water slack on all inbound vessel, 27 feet for vessels carrying oil products, and 29 feet for all outbound vessels. These restrictions will remain in effect until further notice. Palm Beach Harbor Pilots may impose additional restrictions as conditions warrant, in coordination with the Captain of the Port.

The Captain of the Port may be reached at telephone (305) 535-8701, or via Channel 16 VHF FM Marine Radio through Coast Guard Sector Miami.

KARL SCHULTZ
Captain, U.S. Coast Guard
Captain of the Port

Publication—National Ocean Service—U.S. Coast Pilot 5, Atlantic Coast: Gulf of Mexico, Puerto Rico, and Virgin Islands, 2006 (34th) Edition. Change No. 31.

Coast Pilot 5 34th Ed 2006

Corrections

Page 86-Paragraph 814, read:

(a) *The anchorage area*. The water bounded by a line connecting the following coordinates:

Latitude	Longitude
29°44'14"N.	93°52'24"W.
29°44'18"N.	93°52'06"W.
29°43'53"N.	93°51'47"W.
29°43'32"N.	93°51'52"W.

(FR 01/05/07; DD 8608)

Page 94-Paragraphs 988-989, read:

(b-1) Stickney Point (SR 72) bridge, mile 68.6, at Sarasota. The draw shall open on signal, except that the draw need open only on the hour, twenty minutes past the hour, and forty minutes past the hour, from 6 a.m. to 10 p.m., Monday through Friday, except Federal holidays.

(c) The draw of the Siesta Drive Bridge, mile 71.6 at Sarasota, Florida shall open on signal, except that from 7 a.m. to 6 p.m., Monday through Friday, except Federal holidays, the draw need open only on the hour, twenty minutes past the hour and forty minutes past the hour. On weekends and Federal holidays, from 11 a.m. to 6 p.m., the draw need open only on the hour, twenty minutes past the hour and forty minutes past the hour.

(FR 1/25/07)

Page 221-Paragraph 242, lines 2-3; read:

advanced one hour on the second Sunday of March and are set back to standard time on the first Sunday of November.

(CL 324/07)

Page 313-Paragraph 58, line 20; read:

provide berths with water and electricity, pumpout, gasoline, diesel fuel, ...

(DB 12233)

Page 384-Paragraph 41, lines 7-11; read:

Bayou Barataria to the Intracoastal Waterway. In February 2006-January 2007, the controlling depth was 15 feet across the bar, thence 2 feet (4 feet at midchannel) to Light 50 at Bayou Cutler, thence 7 feet (9 feet at midchannel) to the junction with Bayou Villars near the Intracoastal Waterway, thence 1 foot (4 feet at midchannel) to the junction with the ...

(DDs 8637-38; DDs 8557-58; DDs 8354-56;

DDs 7179-7183; NOS 11365)

Page 489-Paragraph 140, line 4; read:

has a clearance of 74 feet.

(CL 151/07)

Page 493-Paragraph 201, line 16; read:

Bay was reported an unsafe storm anchorage area ...

(NOS 11378; CL 146/06)

Publication—National Ocean Service—U.S. Coast Pilot 5, Atlantic Coast: Gulf of Mexico, Puerto Rico, and Virgin Islands, 2006 (34th) Edition. Change No. 32.

Coast Pilot 5 34th Ed 2006

Corrections

Page 435-Paragraph 252, lines 4-6;
read:

basin. In November 2006, the controlling depth was 34 feet (40 feet at midchannel) in the canal and 39 feet in the basin. The channel is marked by a private light and a **090°** ...

(CL 276/07)

Page 438-Paragraph 286, lines 4-5;
read:

September 2006, the controlling depth was 1 foot. The channel is marked by lights and ...

(CL 276/07)

Page 446-Paragraph 390, lines 2-5;
read:

in February 2007, had a controlling depth of 4.0 feet (7.0 feet at midchannel) to the Lockwood Drive fixed highway bridge, about 2 miles above Houston Turning Basin, thence 2.0 feet at midchannel for another 1.7 ...

(CL 276/07)

Page 451-Paragraph 465, lines 6-7;
read:

Waterway. In October-November 2006, the controlling depth was 11.5 feet to the Monsanto basin. It ...

(CL 276/07)

Page 463-Paragraph 115, lines 8-9;
read:

July-October 2006, the controlling depth was 7.0 feet (8.0 feet at midchannel) from the Intracoastal Waterway ...

(CL 276/07)

Page 466-Paragraph 163, lines 4-6;
read:

to a turning basin in **Kinney Bayou**. In September 2006, the controlling depth was 15.0 feet (16.0 feet at midchannel) in the channel, thence 13.5 feet in the basin. The entrance channel is ...

(CL 276/07)

Page 473-Paragraph 267, lines 12-13;
read:

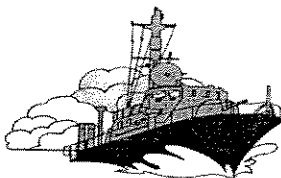
it. In December 2006, the controlling depth was 3.0 feet (7.5 feet at midchannel) in the approach channel; thence in November 2006, 4.8 feet in the connecting ...

(CL 276/07)

REPORT OF CHANNEL CONDITIONS 100 TO 400 FEET WIDE (ER 1130-2-316)						PAGE 1 OF 1 PAGE DATE: March 2007	
TO:				FROM: US ARMY CORPS OF ENGINEERS - CHARLESTON 69A HAGOOD AVE. CHARLESTON, SOUTH CAROLINA 29403-5107			
RIVER/HARBOR NAME AND STATE Charleston Harbor Lower (Profile Lines) (9150)					MINIMUM DEPTHS IN CHANNEL ENTERING FROM SEAWARD		
NAME OF CHANNEL	DATE OF SURVEY	AUTHORIZED PROJECT			LEFT OUTSIDE QUARTER (feet)	MIDDLE HALF (feet)	RIGHT OUTSIDE QUARTER (feet)
		WIDTH (feet)	LENGTH (miles)	DEPTH (feet)			
MAIN CHANNEL							
MT PLEASANT RANGE 0+00 to 95+20.86 NOAA CHART NO. 11524	February 2007	600	1.8	45	45.9	47.8	48.0
REBELLION REACH 95+20.86 to 177+98.63 NOAA CHART NO. 11524	February 2007	600	1.6	45	45.6	48.4	47.6
SHUTES – FOLLY REACH 177+98.63 to 256+56.65 NOAA CHART NO. 11524	February 2007	600	1.5	45	46.3	47.3	47.3
HORSE REACH 256+56.65 to 285+61.96 NOAA CHART NO. 11524	February 2007	800	0.6	45	50.3	49.4	46.5
HOG ISLAND REACH 285+61.96 to 370+00 NOAA CHART NO. 11524	February 2007	600	1.6	45	47.2	47.2	47.4
TOWN CREEK							
TIDEWATER REACH 0+00 to 38+68 NOAA CHART NO. 11524	February 2007	650	0.7	45	33.0	26.9	26.6
LOWER TOWN CREEK REACH 38+68 to 95+00 NOAA CHART NO. 11524	February 2007	400	1.1	45	37.1	42.2	42.2
REMARKS 1. ALL DEPTHS REFER TO LOCAL MEAN LOW WATER. 2. THE INFORMATION SHOWN REPRESENTS THE RESULTS OF SURVEYS MADE ON THE DATES INDICATED AND REFLECTS THE GENERAL CONDITIONS AT THAT TIME. 3. THE RIGHT AND LEFT SIDES OF THE CHANNEL REFER TO TRAVEL IN A GENERAL DIRECTION WHEN ENTERING FROM SEAWARD 4. THE NATURAL CHANNEL WIDTH GENERALLY EXCEEDS THE PROJECT WIDTH SHOWN. 5. POINT OF CONTACT: WAYNE BIEGANOUSKY PHONE: 843-329-8132 6. Minimum depths based on profile lines.							



US Army Corps
of Engineers
Jacksonville District

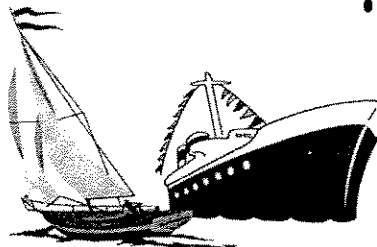


904-232-3974

NOTICE TO NAVIGATION INTERESTS



In reply refer to:
CESAJ-CO-OM
P.O. Box 4970
Jacksonville, FL 32232-0019



CESAJ-CO-OP (1130)

21 March 2007

ST. LUCIE LOCK

NOTICE TO NAVIGATION INTERESTS

OKEECHOBEE WATERWAY, FLORIDA

1. Due to the continued decline of water levels in Lake Okeechobee, mariners are hereby advised that effective 26 March 2007, and until further notice, lockages will conform to the following schedule. Lock Operators will utilize the lock chambers capacity for vessels at Lock Supervisor's discretion as needed. Lock operations outside of these scheduled hours will not be available.

RESTRICTED LOCKING SCHEDULE

East bound vessel lockages on even hours
commencing at 6:00AM and concluding at 8:00PM

West Bound vessel lockages on odd hours
commencing at 7:00AM and concluding at 9:00PM

2. The above lock schedule will remain in effect until such time as a change in the lock operations is announced by subsequent Notice to Navigation Interests. Conditions will be evaluated on a weekly basis. Navigation interests should schedule their operations accordingly.

3. Additional information concerning Lake Okeechobee and the adjoining waterway may be obtained by accessing the Jacksonville District web site at <http://www.saj.usace.army.mil> and linking to the NAVIGATION and/or WATER MANAGEMENT selections from the Menu.

FOR THE COMMANDER:

Jim W. Jeffords, Jr.
Acting Chief, Construction-
Operations Division

U.S. Department of
Homeland Security

United States
Coast Guard



Commander
Seventh Coast Guard District

909 SE 1st Ave.
Miami, FL 33131

Staff Symbol: (dpb)
Phone: (305) 415-6736
Fax: (305) 415-6763
Email: Brodie.E.Rich@uscg.mil

16591/3853
March 27, 2007

PUBLIC NOTICE 06-07

The Commander, Seventh Coast Guard District has received an application from Miami-Dade Transit Authority, Suite 910, 111 NW 1st Street, Miami, Florida 33128-1999, requesting approval of the location and plans for construction of a new bridge over a navigable waterway of the United States.

WATERWAY AND LOCATION: Miami Canal, mile 0.95, downstream of the existing CSX Railroad drawbridge, Miami-Dade County, Florida (T53S/S29/R41E).

PROJECT DESCRIPTION: This proposed project consist of constructing a new elevated rail line including a fixed bridge from the Miami Intermodal Center (MIC) to the existing Earlington Heights Metrorail Station in Miami, a total rail distance of approximately 2.4 miles. The existing FDOT bascule railroad bridge is located just upstream of this proposed rail crossing on Miami Canal. The existing FDOT Railroad drawbridge will not be impacted by the proposed MIC to Earlington Heights Connector rail project. The proposed rail crossing will completely span over the waterway from bank to bank and no support piles will be placed in the Miami Canal for this bridge project. Local and state funds will be used for this proposed rail project.

NAVIGATIONAL CLEARANCES: There is no existing bridge crossing at the proposed bridge site. The next bridge crossing is the existing FDOT Railroad drawbridge located just upstream on the Miami Canal.

Proposed Fixed Rail Bridge:

Horizontal clearance: 150.0 feet (45.72m) – the full extent of the waterway
187.0 feet (56.99m) – from column footing to column footing
122.0 feet (37.18m) – approximate waterway width

Vertical clearance (closed): 40.0 feet (12.19m) above mean high water
42.1 feet (12.83m) above mean low water

ENVIRONMENTAL IMPACTS: The Coast Guard, the lead federal agency, has made a determination that the proposed action meets the criteria for a Finding of No Significant Impact (FONSI) for the purposes of satisfying the National Environmental Policy Act. The Coast Guard FONSI determination was signed on April 04, 2006. In addition, a Biological Assessment dated March 2006 was prepared by the Miami-Dade Transit Authority for this proposed fixed rail bridge crossing.

PUBLIC NOTICE 06-07

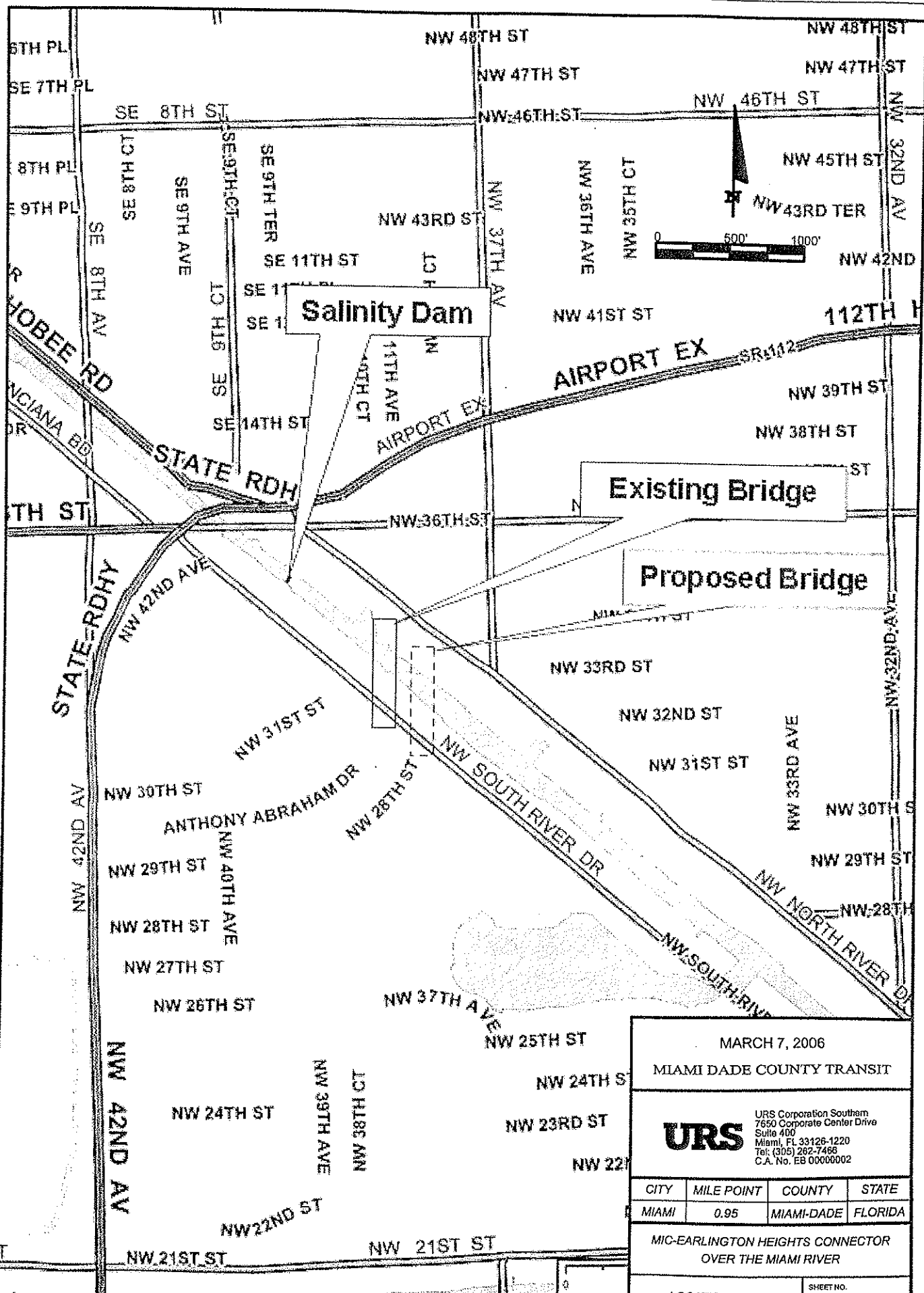
These documents are available for review at the Seventh Coast Guard District (dpb), Bridge Branch, Room 432, 909 S.E. 1st Avenue, Miami, FL 33131-3028, Monday through Friday from 7:30 a.m. to 4 p.m. The proposed fixed rail bridge will be located in the floodplain. The 100-year flood elevation for the proposed bridges is 8.0 ft. (2.73m), mean sea level (MSL), while elevation of the low steel for the drawbridges is 42.1 ft. (12.83m) at MSL. For the rail portion involving the new fixed rail bridge over the Miami Canal, there will be no dredging or placement of fill material associated with this waterway crossing. The total area of work in, on, or over wetlands or other surface waters is 0.11 acres involving 4,750 square feet of new shading impacts due to the rail crossing the Miami Canal. The applicant has applied to the South Florida Water Management District for issuance of their Environmental Resource Permit on February 20, 2007, which will provide Water Quality Certification for this proposed rail bridge project. The proposed fixed rail bridge project will not result in the displacement or relocation of residences, businesses, or people. No parklands, wildlife refuges, or historic properties will be affected by the project.

COMMENTS: Our final decision to issue or deny the permit for the proposed fixed rail bridge will be based upon the effects of the project on navigation and the environment. Interested agencies, organizations, and individuals are invited to express their views, in writing, giving specific reasons for support of, or opposition to, the proposed work. We especially encourage comments on the project's possible impacts on minority and/or low income populations, if any; on the adequacy of the proposed navigational clearances.

All interested agencies and persons are requested to comment on whether the proposed fixed rail bridge project is likely to jeopardize the continued existence of any endangered or threatened species listed, or proposed to be listed or result in the destruction or adverse modification of proposed critical habitat that might be present in the area. Comments should be sent to Commander (dpb), Seventh Coast Guard District, Room 432, 909 S.E. 1st Avenue, Miami, Florida 33131-3028 and should be mailed to arrive on or before 30 days from the date of this notice. These comments will be made part of the case record.

The project manager for this bridge permit application is Mr. Brodie Rich and may be contacted at (305) 415-6736 or by e-mail at Brodie.E.Rich@uscg.mil and by regular mail at the above address.

Enclosures: (1) Permit application drawings, sheets 1-4 (of 4)



MARCH 7, 2006 (USCE PERMIT APPLICATION - NOT FOR CONSTRUCTION)

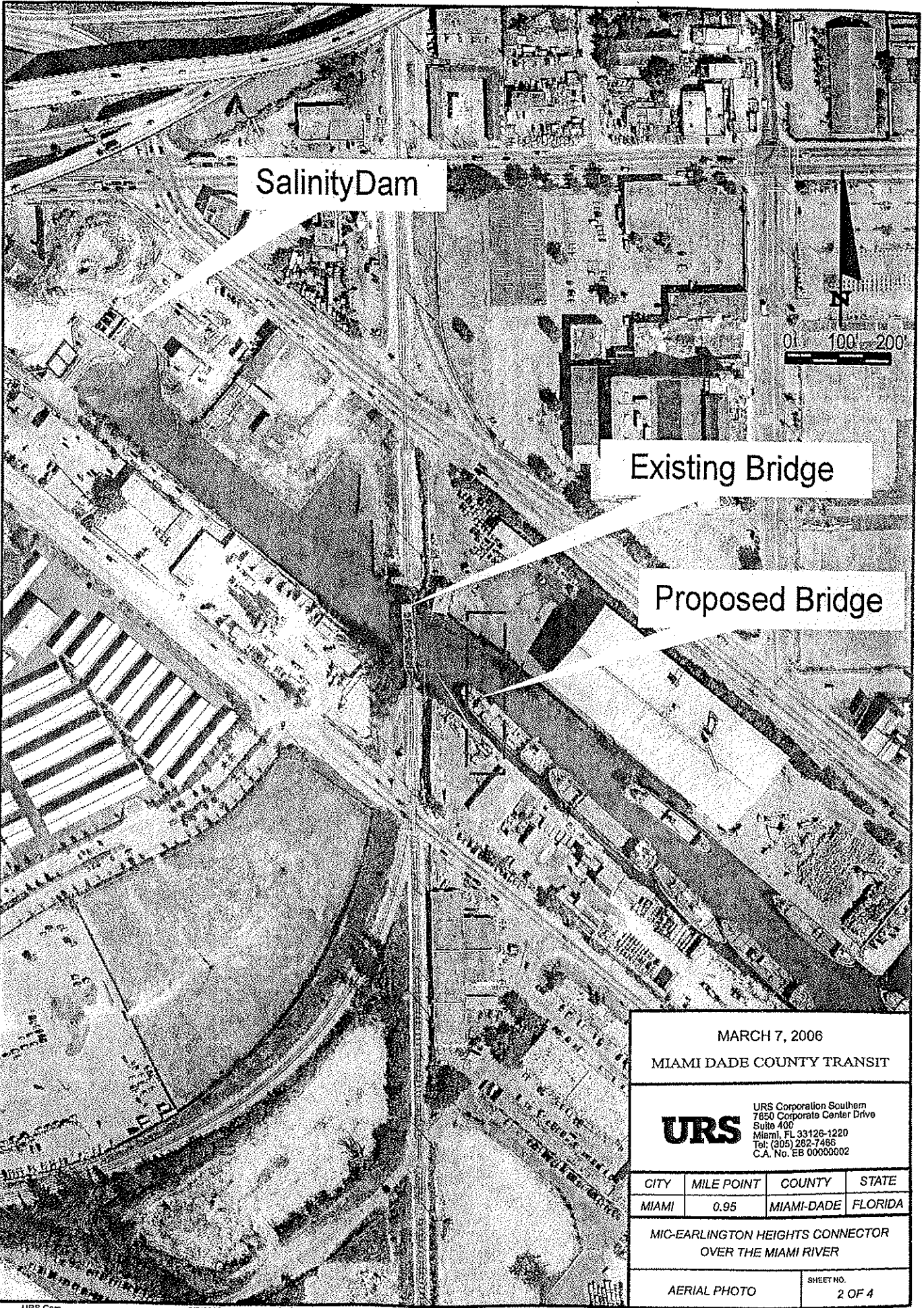
MARCH 7, 2006
 MIAMI DADE COUNTY TRANSIT

URS
 URS Corporation Southern
 7650 Corporate Center Drive
 Suite 400
 Miami, FL 33126-1220
 Tel: (305) 262-7466
 C.A. No. EB 00008002

CITY	MILE POINT	COUNTY	STATE
MIAMI	0.95	MIAMI-DADE	FLORIDA

MIC-EARLINGTON HEIGHTS CONNECTOR
 OVER THE MIAMI RIVER

LOCATION MAP	SHEET NO. 1 OF 4
--------------	---------------------



Salinity Dam

Existing Bridge

Proposed Bridge

MARCH 7, 2006 (USCE PERMIT APPLICATION - NOT FOR CONSTRUCTION)

MARCH 7, 2006
MIAMI DADE COUNTY TRANSIT

URS

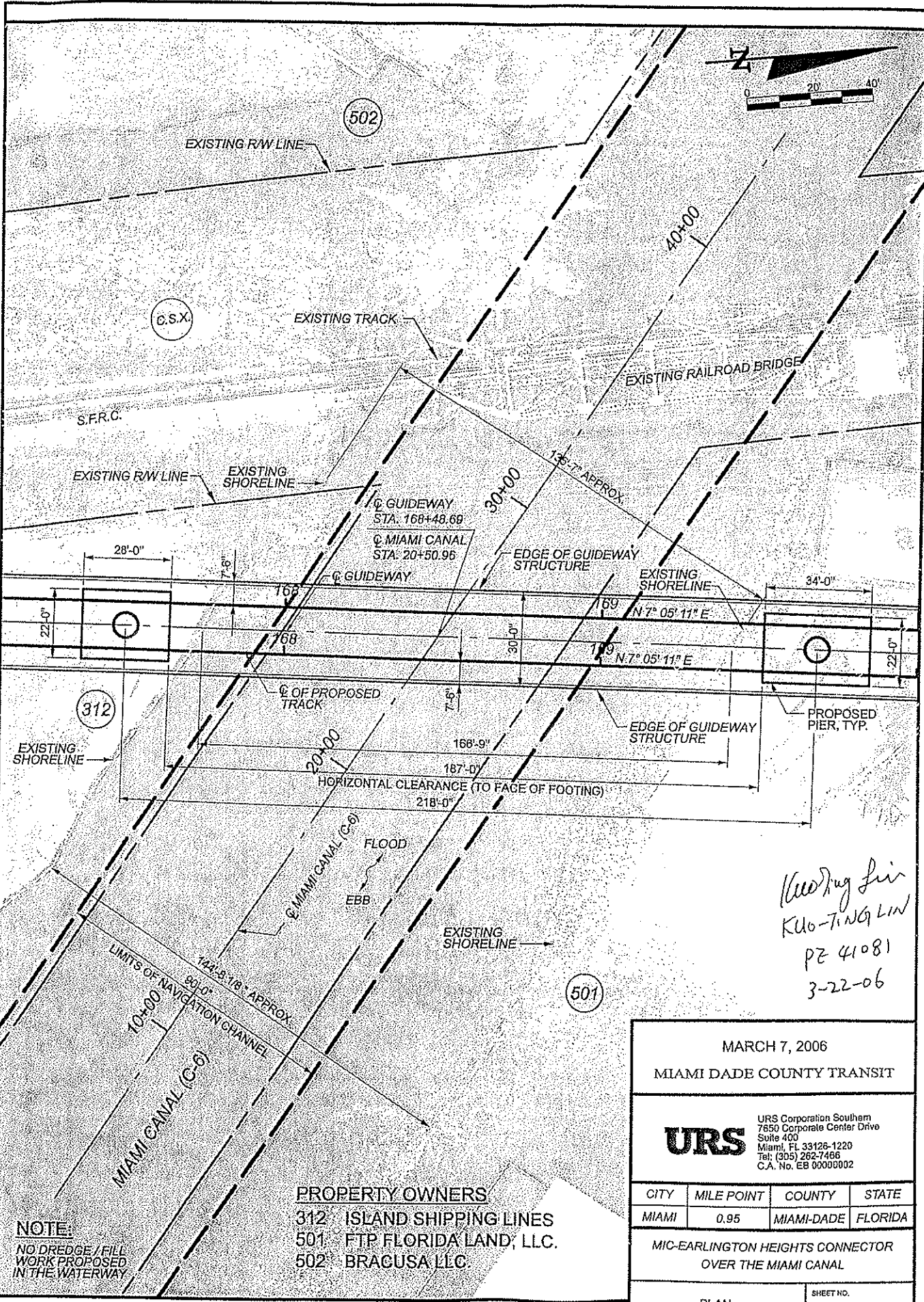
URS Corporation Southern
7850 Corporate Center Drive
Suite 400
Miami, FL 33126-1220
Tel: (305) 282-7486
C.A. No. EB 00000002

CITY	MILE POINT	COUNTY	STATE
MIAMI	0.95	MIAMI-DADE	FLORIDA

MIC-EARLINGTON HEIGHTS CONNECTOR
OVER THE MIAMI RIVER

AERIAL PHOTO

SHEET NO.
2 OF 4



Handwritten:
 Kuo-Tung Lin
 PE 41081
 3-22-06

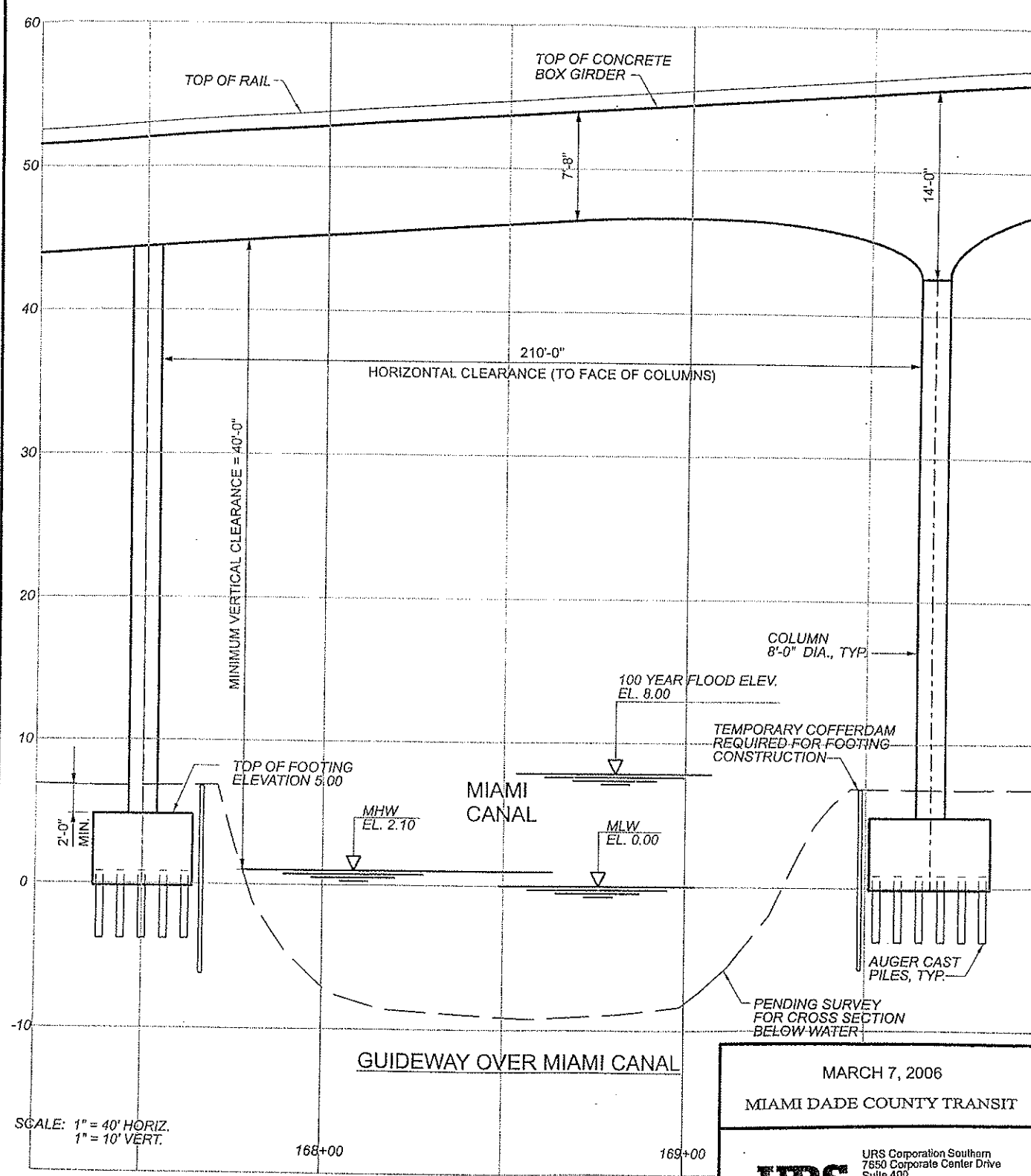
MARCH 7, 2006 (USCE PERMIT APPLICATION - NOT FOR CONSTRUCTION)

NOTE:
 NO DREDGE / FILL
 WORK PROPOSED
 IN THE WATERWAY

PROPERTY OWNERS
 312 ISLAND SHIPPING LINES
 501 FTP FLORIDA LAND, LLC.
 502 BRACUSA LLC.

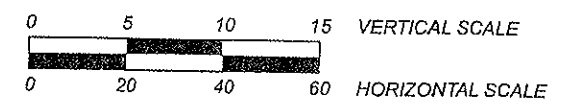
MARCH 7, 2006			
MIAMI DADE COUNTY TRANSIT			
URS		URS Corporation Southern 7650 Corporate Center Drive Suite 400 Miami, FL 33126-1220 Tel: (305) 262-7466 C.A. No. EB 00000002	
CITY	MILE POINT	COUNTY	STATE
MIAMI	0.95	MIAMI-DADE	FLORIDA
MIC-EARLINGTON HEIGHTS CONNECTOR OVER THE MIAMI CANAL			
PLAN		SHEET NO. 3 OF 4	

MARCH 7, 2006 (USCE PERMIT APPLICATION - NOT FOR CONSTRUCTION)




SCALE: 1" = 40' HORIZ.
1" = 10' VERT.

NOTE:
DATUM IS REFERENCED TO NGVD OF 1929.



*Quoting for
Kuo-Ting Lin
PE 41081
3-22-06*

MARCH 7, 2006			
MIAMI DADE COUNTY TRANSIT			
 <small>URS Corporation Southern 7650 Corporate Center Drive Suite 400 Miami, FL 33126-1220 Tel: (305) 262-7468 C.A. No. EB 00000002</small>			
CITY	MILE POINT	COUNTY	STATE
MIAMI	0.95	MIAMI-DADE	FLORIDA
MIC-EARLINGTON HEIGHTS CONNECTOR OVER THE MIAMI CANAL			
ELEVATION			SHEET NO. 4 OF 4