

AMERICAN INDIAN TRIBAL CENSUS TRACT OUTLINE MAP (CENSUS 2000)

41.492201N
72.006768W

41.492201N
71.943511W

LEGEND

SYMBOL	NAME STYLE
*****	INTERNATIONAL
*****	AIR (FEDERAL)
*****	Trust Land
*****	OTSA / TDSA
*****	AMERICAN INDIAN TRIBAL SUBDIVISION
*****	AIR (State)
*****	SDA/ISA
//////	STATE (or statistically equivalent entity)
	COUNTY (or statistically equivalent entity)
-----	Place within Subject Entity
-----	Incorporated Place / GDP
-----	Place outside of Subject Entity
-----	Incorporated Place / GDP
-----	Tribal Census Tract¹

ABBREVIATION REFERENCE: AIR = American Indian Reservation;
Trust Land = Off-Reservation Trust Land; OTSA = Oklahoma Tribal
Statistical Area; TDSA = Tribal Designated Statistical Area;
SDA/ISA = State Designated American Indian Statistical Area;
GDP = Census Designated Place

FEATURES

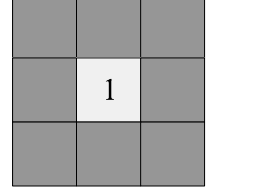
All Roads	Stream/Shoreline
Railroad	Inter-Tribal Stream
Play/Pump Line	River/Lake
Physical Feature	Glacier
Nonvisible Boundary	

Inset Out Area

¹ This map shows tribal census tract boundaries and numbers. A tribal census tract is a type of census tract defined within a federally recognized American Indian reservation or off-reservation trust land for the purpose of providing data based on an American Indian hierarchy rather than by state and county.

OFF-RESERVATION TRUST LAND NAMES
T2145 Mashantucket Pequot

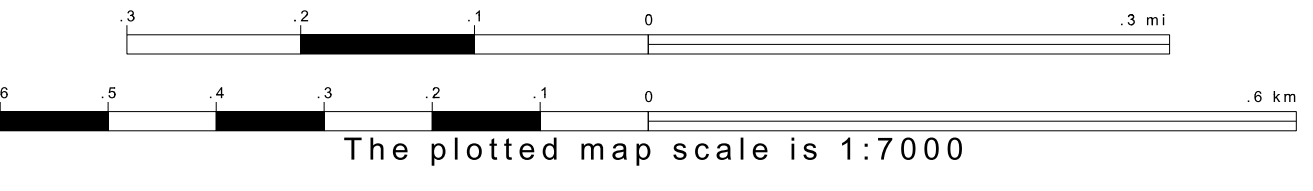
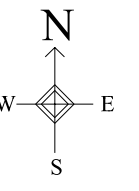
Key to Adjacent Sheets



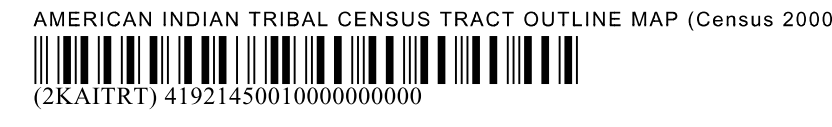
SHEET 1 OF 1 PARENT SHEET
TOTAL SHEETS: 1 (Index 0; Parent 1; Inset 0)

41.445500N
72.006768W

41.445500N
71.943511W



ENTITY TYPE: American Indian Reservation
NAME: Mashantucket Pequot Reservation and Off-Reservation Trust Land (2145)
ST: Connecticut



All legal boundaries and names are as of January 1, 2000. The boundaries shown on this map are for Census Bureau statistical data collection and tabulation purposes only; their depiction and designation for statistical purposes does not constitute a determination of jurisdictional authority or rights of ownership or entitlement. Source: U.S. Census Bureau's TIGER database (Census 2000). Projection: State-based Albers' Equal Area
U.S. DEPARTMENT OF COMMERCE Economics and Statistics Administration U.S. Census Bureau