



[USGS Home Contact](#)
[USGS Search USGS](#)

Woods Hole Science Center

[WHSC Home](#) [Projects](#) [Technology](#) [Publications](#) [Data](#) [People](#) [Location](#) [Contact Us](#)

[Back to Marine Nuisance Species](#)

Printable version in [PDF format](#)

Didemnum vexillum - Shakespeare Bay, New Zealand, Images



Image SH_SB_NZ002

Image SH_SB_NZ002. *Didemnum vexillum* hanging from the Steel Mariner barge in Shakespeare Bay. Water depth 2 m. Water temperature approximately 11 deg C. May 10, 2002. Photo credit: Sean Handley, NIWA.
[Location no. 11](#)
[Click here to download image.](#)



Image AC_SB_NZ016

Image AC_SB_NZ016. *Didemnum vexillum* growing on the gravel and shells of seabed underneath the Steel Mariner barge in Shakespeare Bay. Note overgrowth on Greenshell mussel *Perna canaliculus*. Water depth 8 m. Water temperature approximately 20 dec C. February 2002. Photo credit: Ashley Coutts, Cawthron Institute. [Location no. 11](#)
Click here to [download image](#).



Image AC_SB_NZ003

Image AC_SB_NZ003. Image AC_SB_NZ003. *Didemnum vexillum* hanging from a wharf pile in Shakespeare Bay. Water depth 3 m. Water temperature approximately 15 deg C. October 2002. Photo credit: Ashley Coutts, Cawthron Institute. [Location no. 11](#)
Click here to [download image](#).



Image AC_SB_NZ004

Image AC_SB_NZ004. Newly established *Didemnum vexillum* colony on polythene plastic (<14 days old). Shakespeare Bay. Water depth 6 m. Water temperature approximately 17 deg C. December 2003. Photo credit: Ashley Coutts, Cawthron Institute. [Location no. 11](#)

Click here to [download image](#).



Image SH_SB_NZ005

Image SH_SB_NZ005. *Didemnum vexillum* smothering Greenshell mussels *Perna canaliculus*. Shakespeare Bay. Water depth 6 m. Water temperature approximately 11 deg C. May 10, 2002. Photo credit: Sean Handley, NIWA. [Location no. 11](#)

Click here to [download image](#).



Image AC_SB_NZ006

Image AC_SB_NZ006. *Didemnum vexillum* smothering Greenshell mussels *Perna canaliculus*. Shakespeare Bay. Water depth 0 m. Water temperature approximately 19 deg C. February 2002. Photo credit: Ashley Coutts, Cawthron Institute. [Location no. 11](#)

Click here to [download image](#).



Image AC_SB_NZ007

Image AC_SB_NZ007. The chiton *Cryptoconchus porosus* grazing on *Didemnum vexillum* on rocks underneath Waimahara wharf, Shakespeare Bay. Water depth 3 m. Water temperature approximately 17 deg C. December 2003. Photo credit: Ashley Coutts, Cawthron Institute. [Location no. 11](#)

Click here to [download image](#).



Image AC_SB_NZ008

Image AC_SB_NZ008. The pink sea urchin *Notechinus albocinctus* grazing on *Didemnum vexillum* on the seabed underneath Waimahara wharf, Shakespeare Bay. Water depth 3 m. Water temperature approximately 17 deg C. December 2003. Photo credit: Ashley Coutts, Cawthron Institute. [Location no. 11](#)

[Click here to download image.](#)

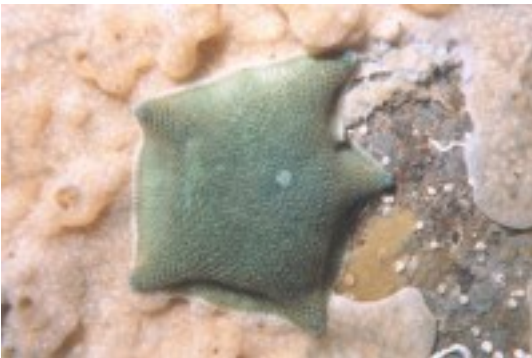


Image AC_SB_NZ009

Image AC_SB_NZ009. The common cushion starfish *Patiriella regularis* grazing on *Didemnum vexillum* on the seabed underneath Waimahara wharf, Shakespeare Bay. Water depth 3 m. Water temperature approximately 17 deg C. December 2003. Photo credit: Ashley Coutts, Cawthron Institute. [Location no. 11](#)

[Click here to download image.](#)

[Back to Top](#)



To view files in PDF format, download free copy of [Adobe Reader](#).

Accessibility FOIA Privacy Policies and Notices

[U.S. Department of the Interior](#) | [U.S. Geological Survey](#)

URL: donnewdtxp.whsc.er.usgs.gov/drafts/PDF-project-pages/PDF-stellwagen/PDF-didemnum/htm/page15a.htm

Page Contact Information: webmaster-woodshole@usgs.gov

Page Last Modified: Thursday, 28-Jun-2007 10:10:38 Eastern Daylight Time

