



LEGEND
 - - - - - SITE BOUNDARY (SOW 2006)
 - - - - - PRELIMINARY DIRECT CONTACT RISK PRESUMPTIVE REMEDY AREA
 - - - - - PARCEL BOUNDARY
 3264 LOT NUMBER

SOURCE: CITY OF DAYTON, AERIAL DATED 2005.

figure 2.1
SITE FEATURES/SITE INSPECTION
SOUTH DAYTON DUMP AND LANDFILL SITE
Moraine, Ohio



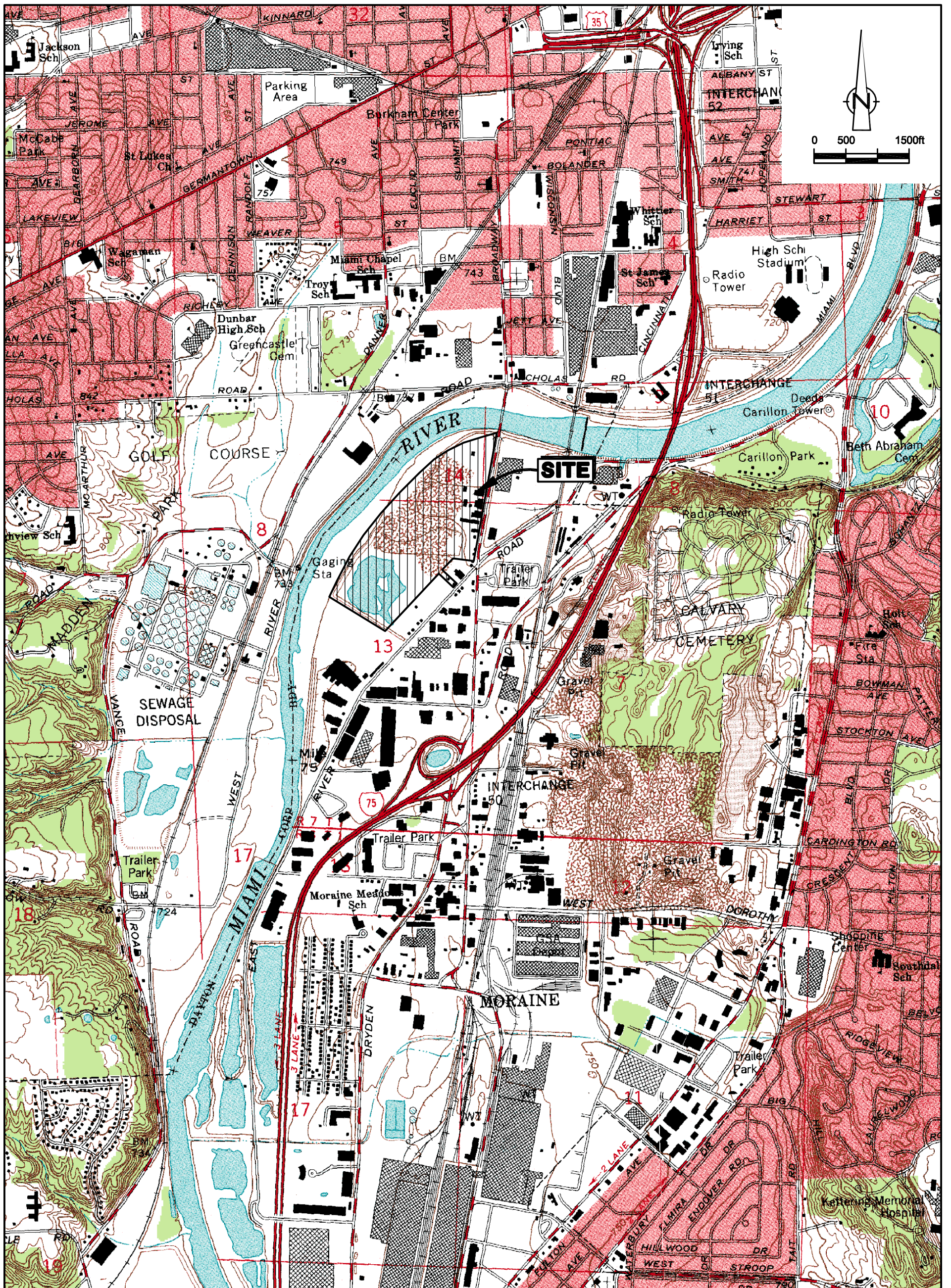


- LEGEND**
- - - - - SITE BOUNDARY (SOW 2006)
 - - - - - PRELIMINARY DIRECT CONTACT RISK PRESUMPTIVE REMEDY AREA
 - - - - - FILL AREAS
 - - - - - PARCEL BOUNDARY
 - 3264 LOT NUMBER

SOURCE: CITY OF DAYTON, AERIAL DATED 2005.

figure 2.19
COMPOSITE FILL/WASTE BOUNDARY
SOUTH DAYTON DUMP AND LANDFILL SITE
Moraine, Ohio

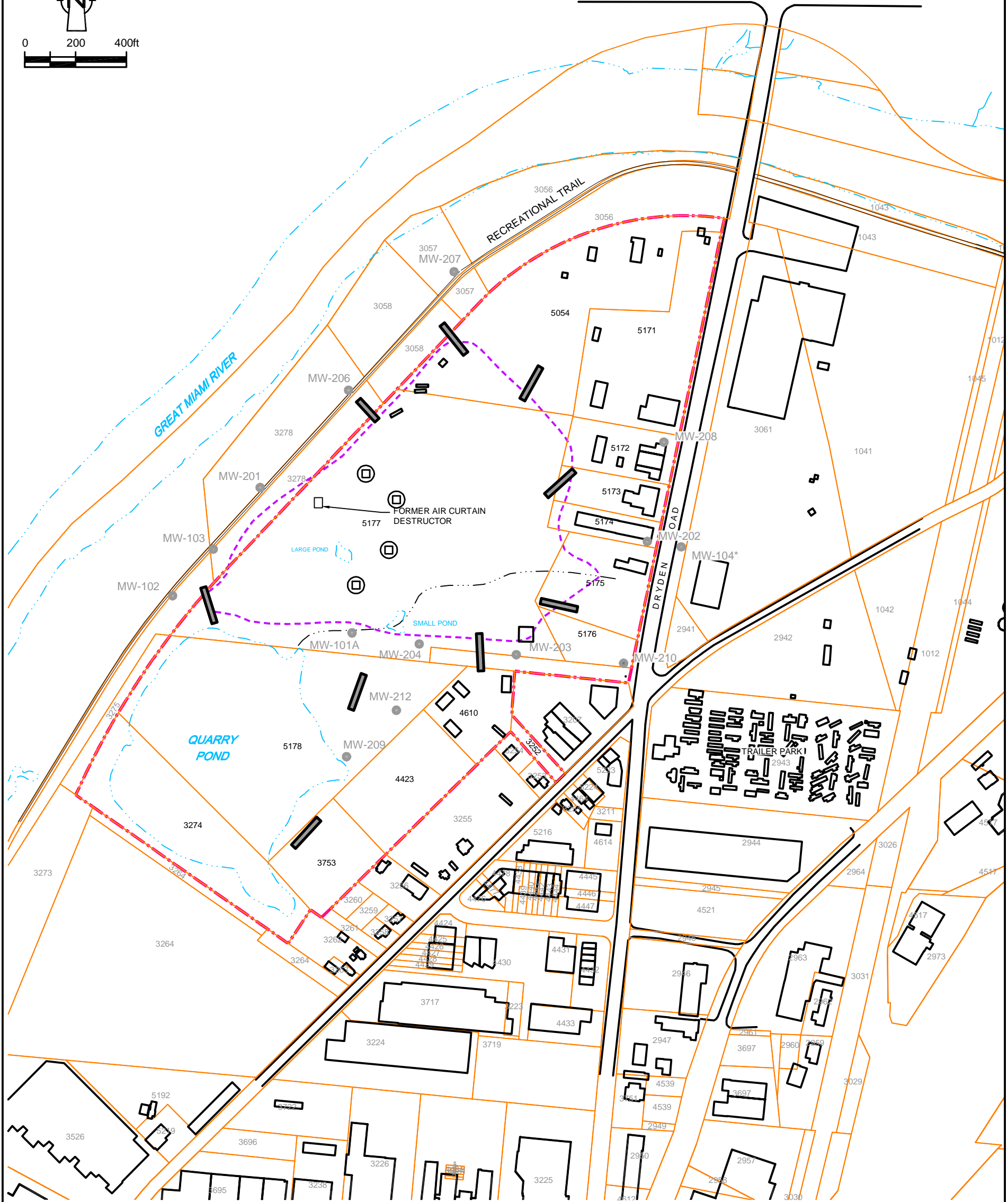
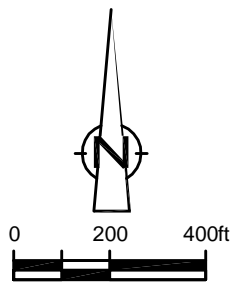




SOURCE: USGS QUADRANGLE MAP
DAYTON SOUTH, OHIO



figure 1.1
SITE LOCATION MAP
SOUTH DAYTON DUMP AND LANDFILL SITE
Moraine, Ohio



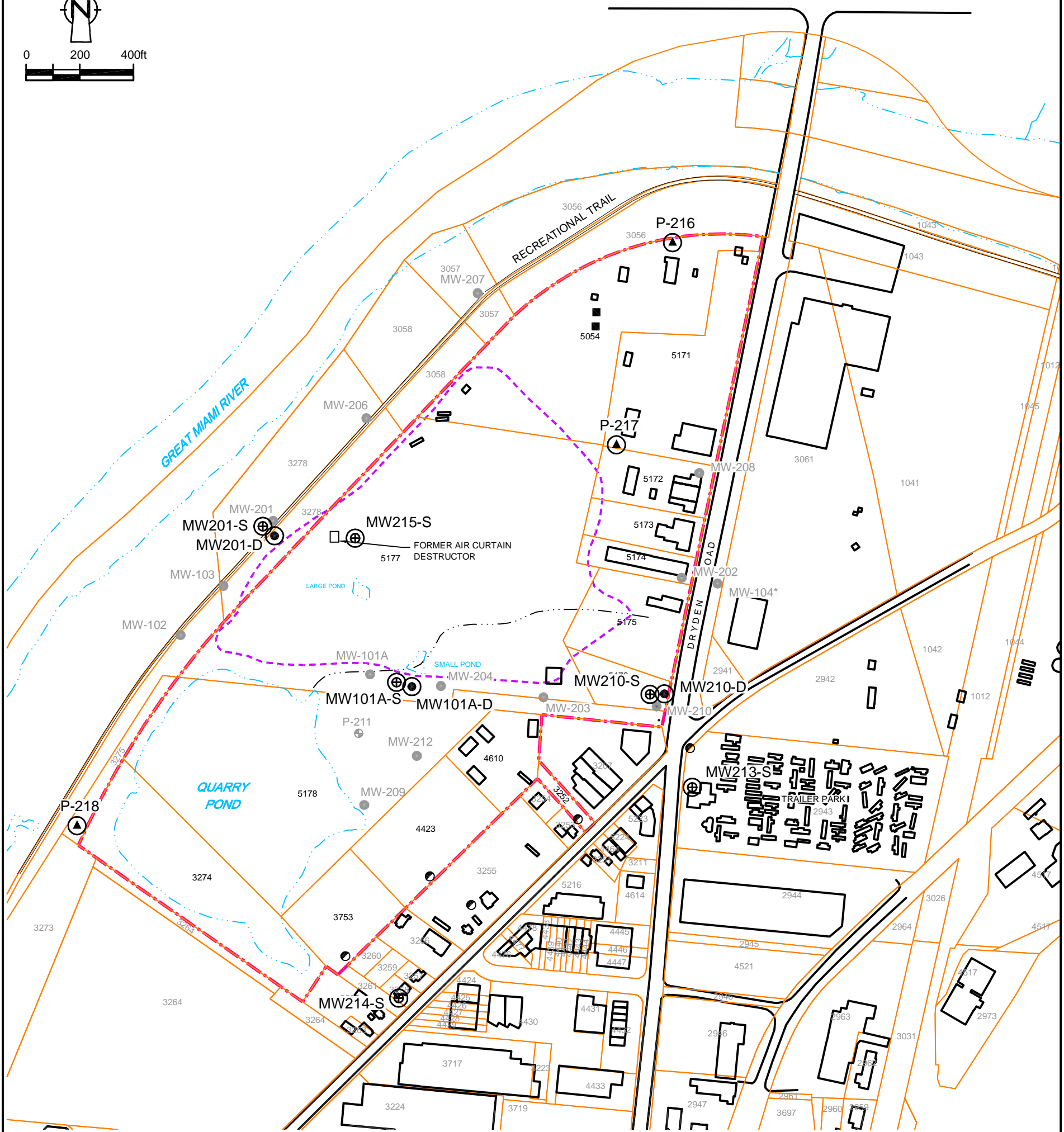
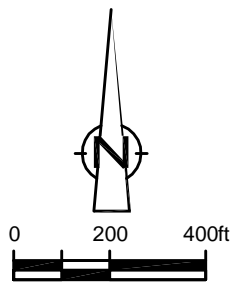
LEGEND

- MW-206 ● UPPER AQUIFER MONITORING WELL LOCATION
- SITE BOUNDARY (SOW 2006)
- - - PRELIMINARY DIRECT CONTACT RISK PRESUMPTIVE REMEDY AREA
- ▬ PROPOSED TEST TRENCH LOCATION
- ⊕ PROPOSED TEST PIT LOCATION
- EDGE OF WATER
- * APPROXIMATE LOCATION

**PROPOSED PHASE I TEST PIT AND TRENCH EXCAVATION LOCATIONS
SOUTH DAYTON DUMP AND LANDFILL SITE**

figure 5.2
Moraine, Ohio

SOURCES:
 THE PAYNE FIRM, INC., PROJECT 0279.44.05, FIGURE 1, DATED 9/12/05;
 TETRA TECH EM INC., PROJECT L0312006-SOUTH DAYTON DUMP, FIGURE 2, SITE LAYOUT, 05/25/2004;
 USGS AERIAL PHOTOGRAPH, DAYTON SOUTH, 1994.



LEGEND

- MW-206 ● INTERMEDIATE ZONE MONITORING WELL LOCATION
- SITE BOUNDARY (SOW 2006)
- - - PRELIMINARY DIRECT CONTACT RISK PRESUMPTIVE REMEDY AREA
- EDGE OF WATER
- ⊕ PROPOSED SHALLOW GROUNDWATER MONITORING WELL LOCATION
- ⊙ PROPOSED DEEP GROUNDWATER MONITORING WELL LOCATION
- ▲ PROPOSED PIEZOMETER WELL LOCATION
- WATER SUPPLY WELL
- P-211 ● EXISTING PIEZOMETER WELL LOCATION
- TEMPORARY WELL (GEOPROBE) LOCATION
- * APPROXIMATE LOCATION

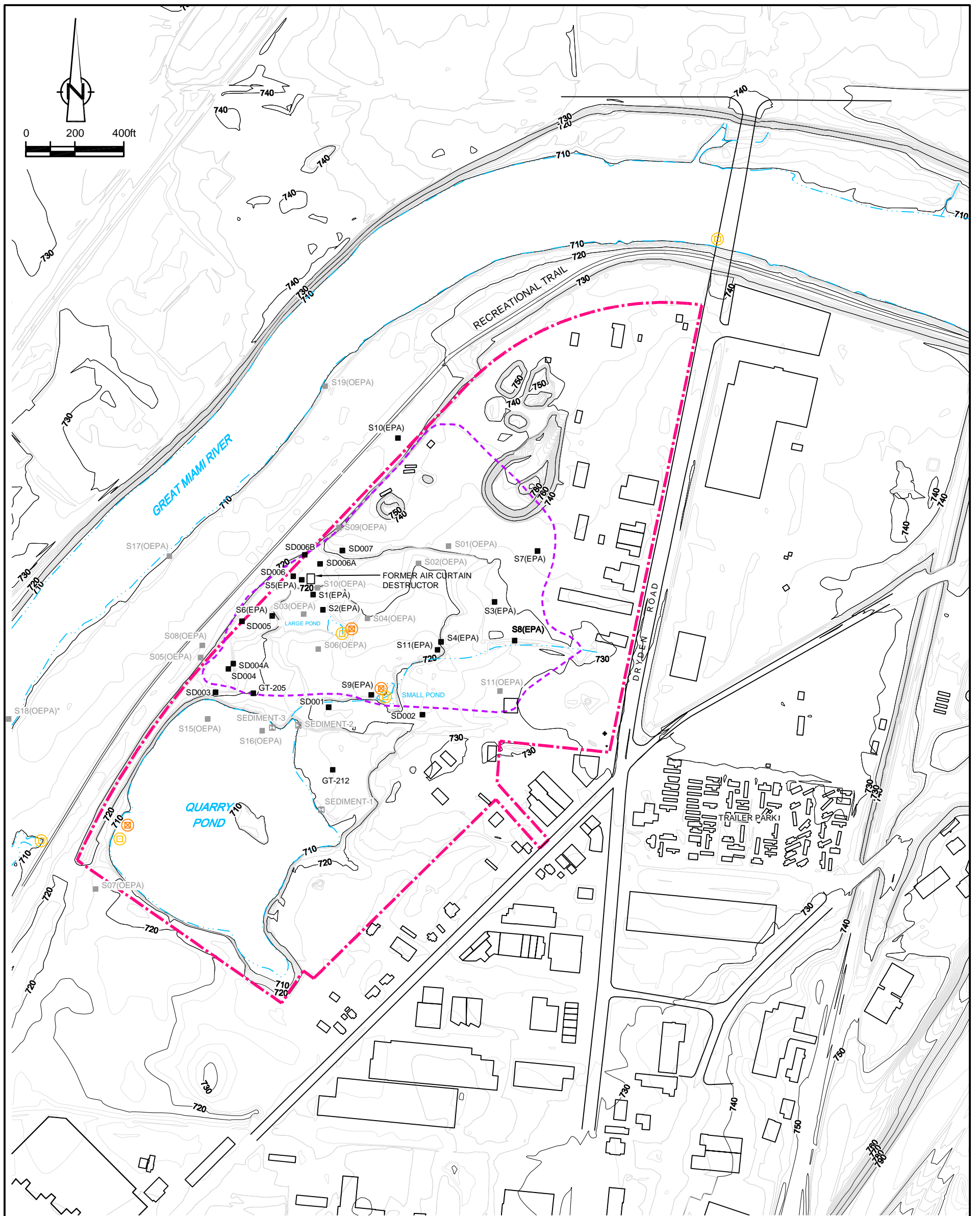
NOTE:
TWO CONTINGENCY DEEP WELLS INCLUDED IN PHASE I RI/FS. LOCATIONS TO BE
SELECTED BASED ON RESULTS OF VERTICAL AQUIFER SAMPLING.

**PROPOSED MONITORING/PIEZOMETER WELL LOCATIONS
SOUTH DAYTON DUMP AND LANDFILL SITE
Moraine, Ohio**

figure 5.3

SOURCES:
THE PAYNE FIRM, INC., PROJECT 0279.44.05, FIGURE 1, DATED 9/12/05;
TETRA TECH EM INC., PROJECT L0312006-SOUTH DAYTON DUMP, FIGURE 2, SITE LAYOUT, 05/25/2004;
USGS AERIAL PHOTOGRAPH, DAYTON SOUTH, 1994.





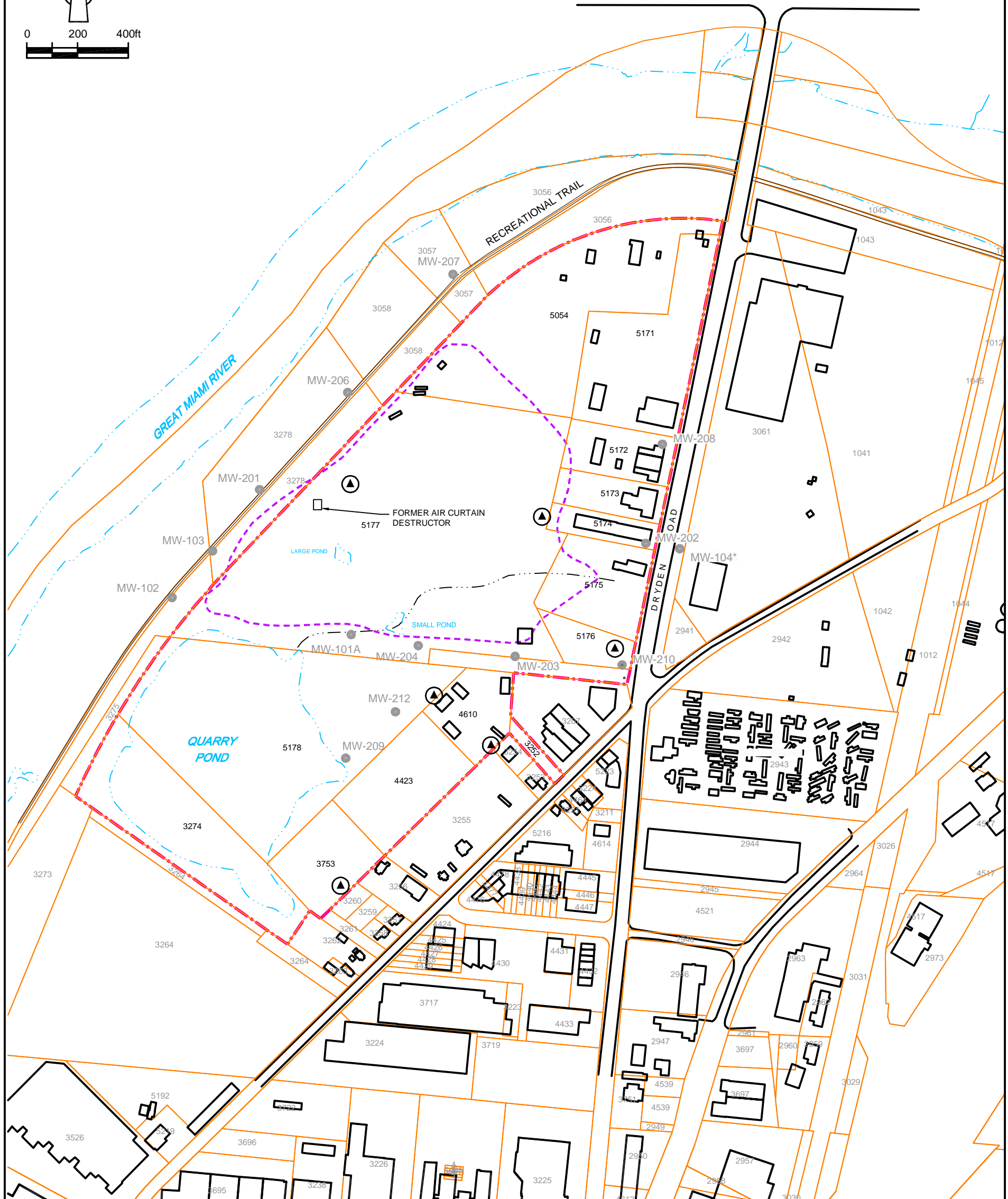
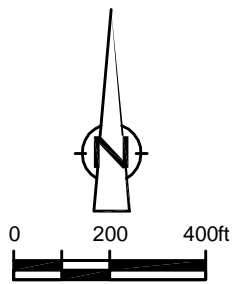
LEGEND

- - - SITE BOUNDARY (SOW 2006)
- - - PRELIMINARY DIRECT CONTACT RISK PRESUMPTIVE REMEDY AREA
- 730 — EXISTING GROUND CONTOUR (2 FT CONTOUR INTERVAL)
- S01(OEPA) ■ HISTORIC SOIL BORING LOCATION
- SEDIMENT-1 ■ HISTORIC SEDIMENT SAMPLING LOCATION
- EDGE OF WATER
- ⊠ PROPOSED SURFACE WATER GAUGING STATION
- ⊠ PROPOSED SEDIMENT SAMPLING LOCATION
- SD002 ■ SOIL BORING LOCATION

figure 5.4

**PROPOSED PHASE I SURFACE WATER AND SEDIMENT SAMPLING
SOUTH DAYTON DUMP AND LANDFILL SITE
Moraine, Ohio**

SOURCES:
 THE PAYNE FIRM, INC., PROJECT 0279.44.05, FIGURE 1, DATED 9/12/05;
 TETRA TECH EM INC., PROJECT L0312006-SOUTH DAYTON DUMP, FIGURE 2, SITE LAYOUT, 05/25/2004;
 CITY OF MORAINE.



LEGEND

- MW-206 ● INTERMEDIATE ZONE MONITORING WELL LOCATION
- SITE BOUNDARY (SOW 2006)
- - - PRELIMINARY DIRECT CONTACT RISK PRESUMPTIVE REMEDY AREA
- EDGE OF WATER
- ⊙ PROPOSED LANDFILL GAS PROBE LOCATION
- * APPROXIMATE LOCATION

SOURCES:
 THE PAYNE FIRM, INC., PROJECT 0279.44.05, FIGURE 1, DATED 9/12/05;
 TETRA TECH EM INC., PROJECT L0312006-SOUTH DAYTON DUMP, FIGURE 2, SITE LAYOUT, 05/25/2004;
 USGS AERIAL PHOTOGRAPH, DAYTON SOUTH, 1994.

figure 5.5
PROPOSED PHASE I SOIL GAS PROBE LOCATIONS
SOUTH DAYTON DUMP AND LANDFILL SITE
Moraine, Ohio

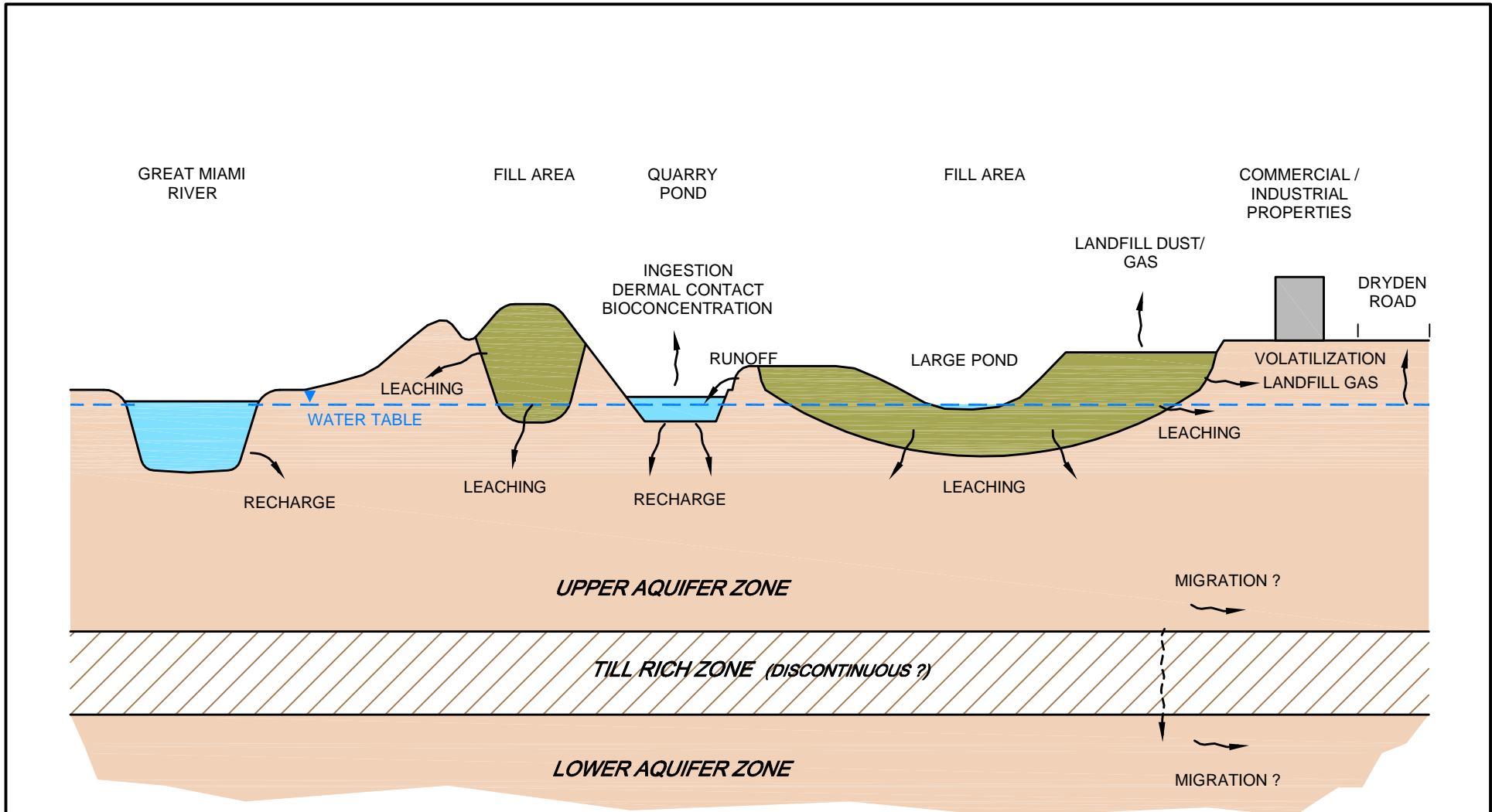
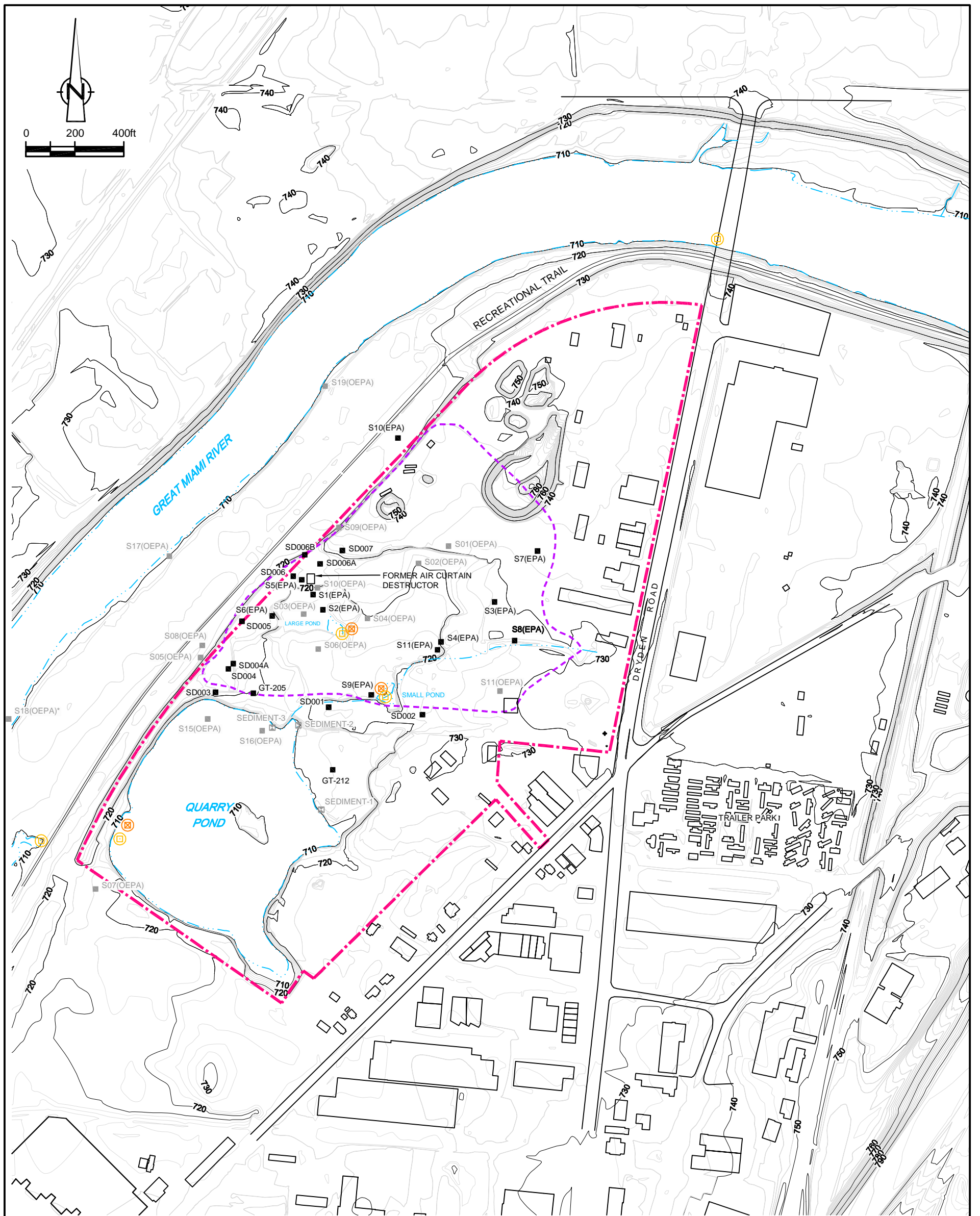


figure 3.1
 CONCEPTUAL SITE MODEL
 SOUTH DAYTON DUMP AND LANDFILL SITE
 Moraine, Ohio





LEGEND

- - - SITE BOUNDARY (SOW 2006)
- - - PRELIMINARY DIRECT CONTACT RISK PRESUMPTIVE REMEDY AREA
- 730 --- EXISTING GROUND CONTOUR (2 FT CONTOUR INTERVAL)
- S01(OEPA) ■ HISTORIC SOIL BORING LOCATION
- SEDIMENT-1 ■ HISTORIC SEDIMENT SAMPLING LOCATION
- EDGE OF WATER
- PROPOSED SURFACE WATER GAUGING STATION
- ⊗ PROPOSED SEDIMENT SAMPLING LOCATION
- SD002 ■ SOIL BORING LOCATION

figure 5.4

**PROPOSED PHASE I SURFACE WATER AND SEDIMENT SAMPLING
SOUTH DAYTON DUMP AND LANDFILL SITE
Moraine, Ohio**

SOURCES:
 THE PAYNE FIRM, INC., PROJECT 0279.44.05, FIGURE 1, DATED 9/12/05;
 TETRA TECH EM INC., PROJECT L0312006-SOUTH DAYTON DUMP, FIGURE 2, SITE LAYOUT, 05/25/2004;
 CITY OF MORAINE.