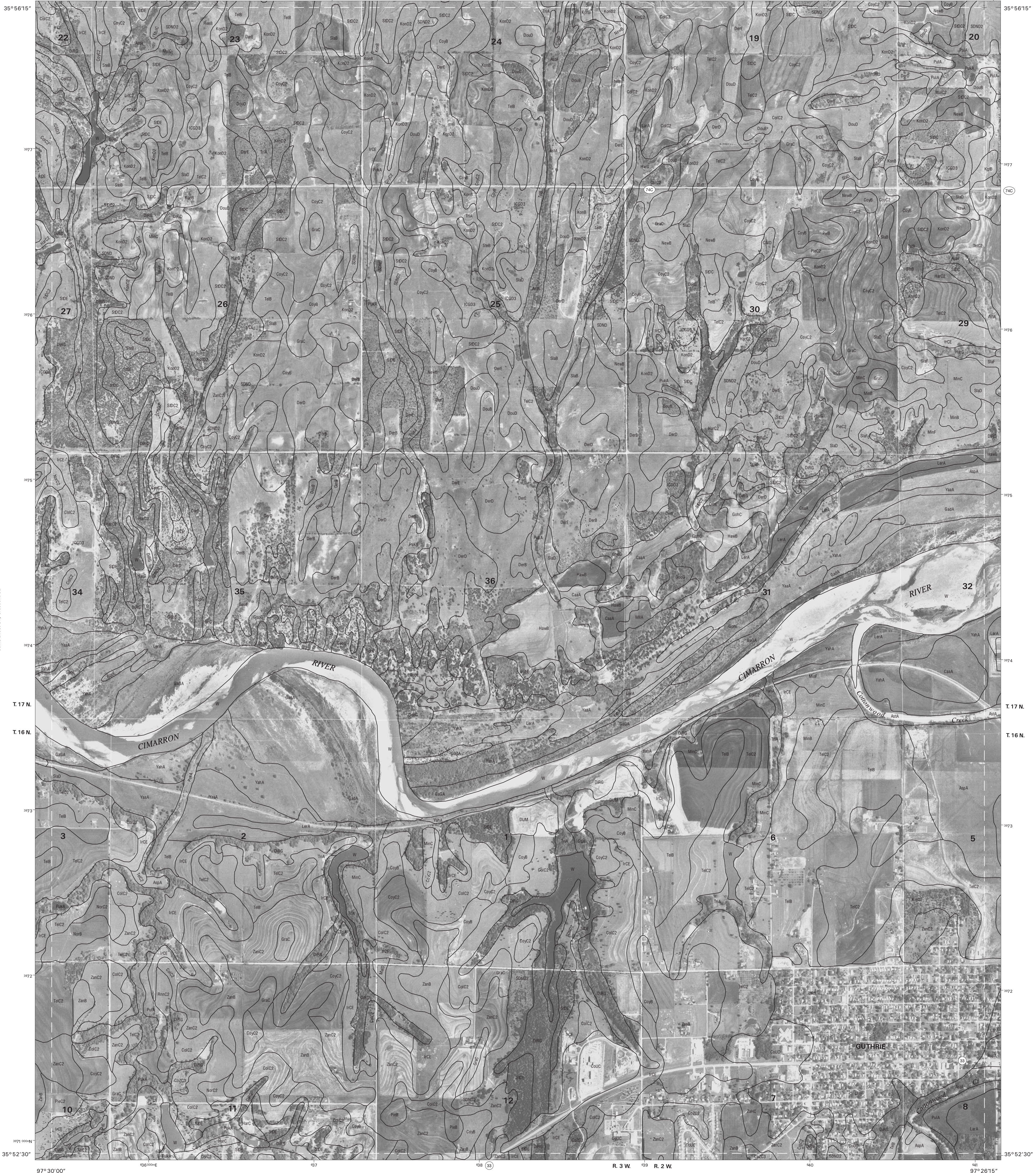


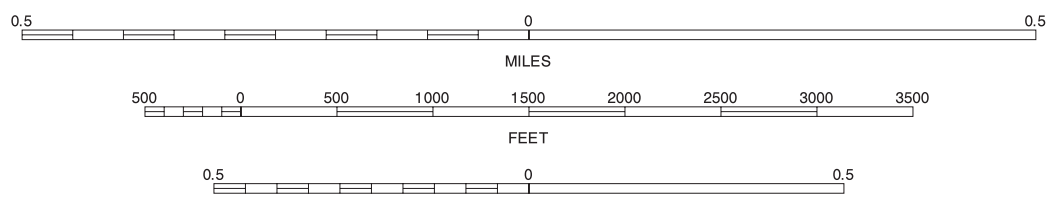
Joins sheet 23, Guthrie North NW

R. 3 W. 74C R. 2 W. 439



Joins sheet 41, Guthrie South NW

SCALE 1:12000



This soil survey was compiled by the U.S. Department of Agriculture, Natural Resources Conservation Service. Base maps are orthophotographs prepared by the U.S. Department of Interior, Geological Survey, from 1950 aerial photography. Public Land Survey System (PLSS) was acquired by Topographic Mapping and was edited to conform with features represented on the publication orthophotography and to enhance the clarity of the soils information.

North American Datum of 1983 (NAD83), GRS-80 Spheroid 1000-meter ticks; Universal Transverse Mercator, zone 14. Coordinate grid ticks and land division data, if shown, are approximately positioned. Digital data are available for this quadrangle.

NORTH



QUARTER QUADRANGLE LOCATION

22	23	24
31	32	33
40	41	42

INDEX TO ADJOINING 3.75-MINUTE MAPS

GUTHRIE NORTH SW, OKLAHOMA
3.75-MINUTE SERIES
SHEET NUMBER 32 OF 64

Soil map delineations extending beyond the dashed white quadrangle neoline are for reference only and are included on adjacent map sheets.

Joins sheet 22, Crescent NE

Joins sheet 24, Guthrie North NE

Joins sheet 31, Crescent SE

Joins sheet 33, Guthrie North SE

Joins sheet 40, Guthrie NE

Joins sheet 42, Guthrie South NE