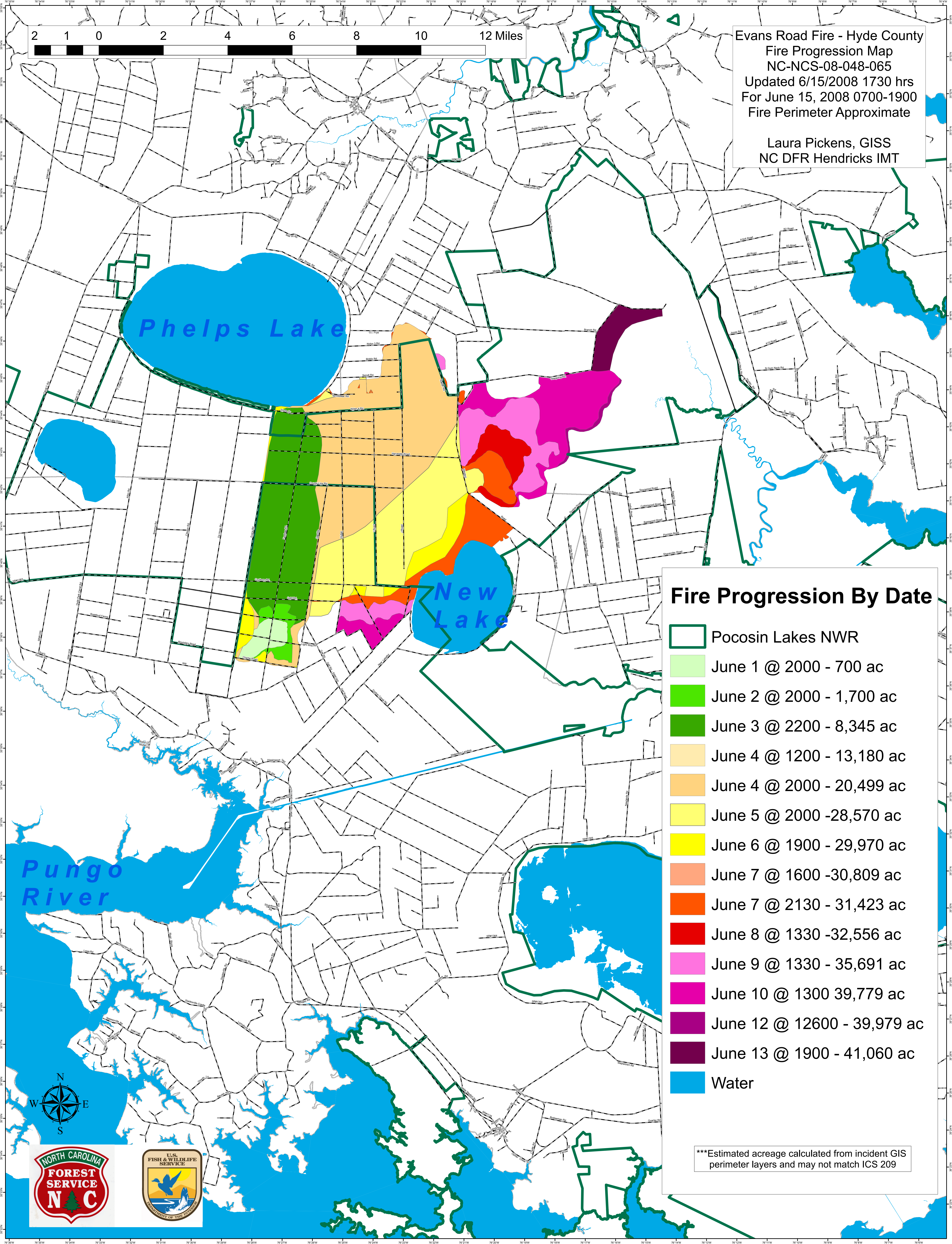




Evans Road Fire - Hyde County
 Fire Progression Map
 NC-NCS-08-048-065
 Updated 6/15/2008 1730 hrs
 For June 15, 2008 0700-1900
 Fire Perimeter Approximate

Laura Pickens, GISS
 NC DFR Hendricks IMT



Fire Progression By Date

- Pocosin Lakes NWR
- June 1 @ 2000 - 700 ac
- June 2 @ 2000 - 1,700 ac
- June 3 @ 2200 - 8,345 ac
- June 4 @ 1200 - 13,180 ac
- June 4 @ 2000 - 20,499 ac
- June 5 @ 2000 - 28,570 ac
- June 6 @ 1900 - 29,970 ac
- June 7 @ 1600 - 30,809 ac
- June 7 @ 2130 - 31,423 ac
- June 8 @ 1330 - 32,556 ac
- June 9 @ 1330 - 35,691 ac
- June 10 @ 1300 - 39,779 ac
- June 12 @ 12600 - 39,979 ac
- June 13 @ 1900 - 41,060 ac
- Water

***Estimated acreage calculated from incident GIS perimeter layers and may not match ICS 209

