

# RNAV (GPS) RWY 6

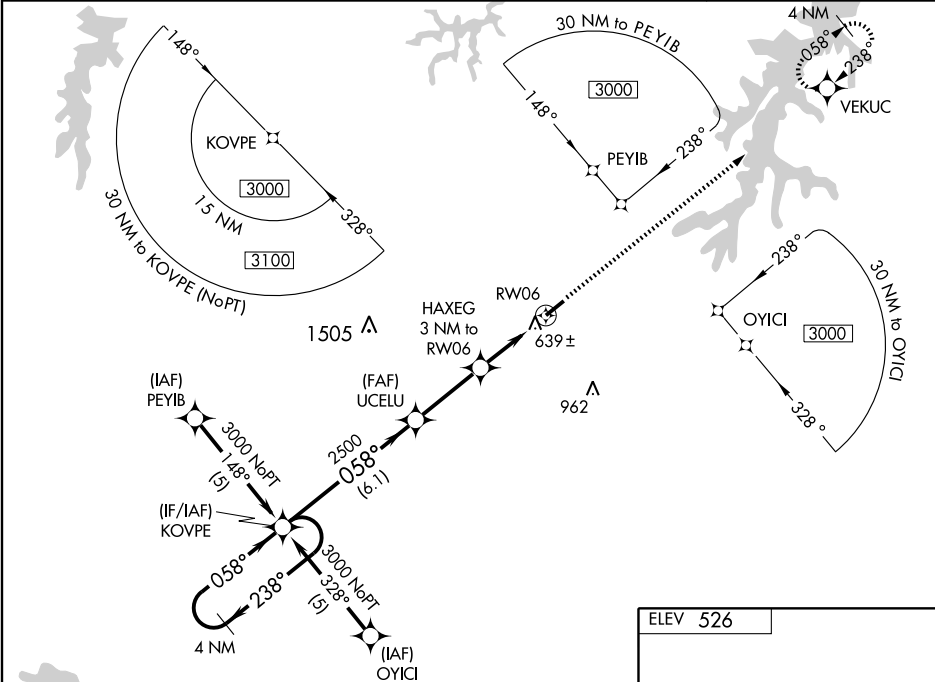
OXFORD/HENDERSON-OXFORD (HNZ)

WAAS CH <b>45709</b> <b>W06A</b>	APP CRS <b>058°</b>	Rwy Idg <b>5002</b> TDZE <b>526</b> Apt Elev <b>526</b>
--	------------------------	---

Baro-VNAV NA when using Roxboro altimeter setting. DME/DME RNP-0.3 NA. For uncompensated Baro-VNAV systems, LNAV/VNAV NA below -16° C (4° F) or above 48° C (118° F). Visibility reduction by helicopters NA. When local altimeter setting not received, use Roxboro altimeter setting and increase LPV DA to 928, LNAV/VNAV DA to 973, and all MDA 80 feet; increase LPV all Cats, LNAV/VNAV all Cats, and LNAV Cats C and D visibility ¼ mile.

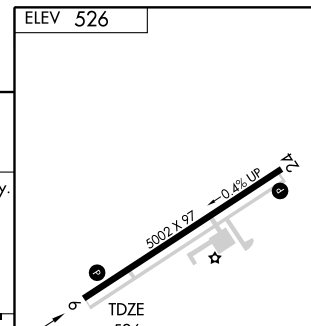
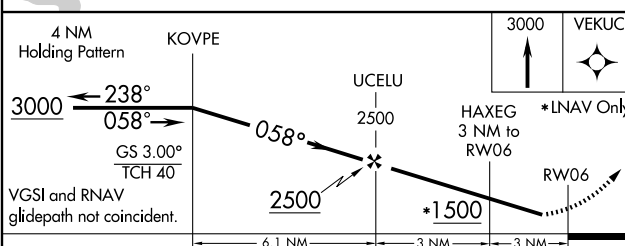
**MISSED APPROACH:**  
Climb to 3000 direct  
VEKUC and hold.

AWOS-3 <b>118.625</b>	RALEIGH APP CON <b>132.35 256.9</b>	GCO <b>135.075</b>	UNICOM <b>122.8</b> (CTAF) <b>0</b>
--------------------------	--	-----------------------	--



SE-2, 25 SEP 2008 to 23 OCT 2008

SE-2, 25 SEP 2008 to 23 OCT 2008



CATEGORY	A	B	C	D
LPV DA		864-1¼	338 (400-1¼)	
LNAV/VNAV DA		909-1¼	383 (400-1¼)	
LNAV MDA	900-1	374 (400-1)		900-1¼ 374 (400-1¼)
CIRCLING	940-1 414 (500-1)	980-1 454 (500-1)	980-1½ 454 (500-1½)	1080-2 554 (600-2)

REIL Rwy 6 **0**  
MIRL Rwy 6-24 **0**