



prepare for arrival.

# The New Indianapolis International Airport Opening November 12, 2008



# New Indianapolis Airport Project From Vision to Reality

- Vision
- Constituency Support
- Planning
- Approvals
- Construction
- Commissioning
- Operational Reality

## Constituency Support is Key

- Airport Authority Board
- Mayor of Indianapolis
- City-County Council
- Federal Aviation Administration
- IN Department of Transportation
  - Office of Aviation
  - Highway Division
- Transportation Security Administration
- Hendricks County
- IN Dept of Environmental Mgmt
- Airlines
- Rating Agencies / Financial Markets

## Vision...Planning...Approval

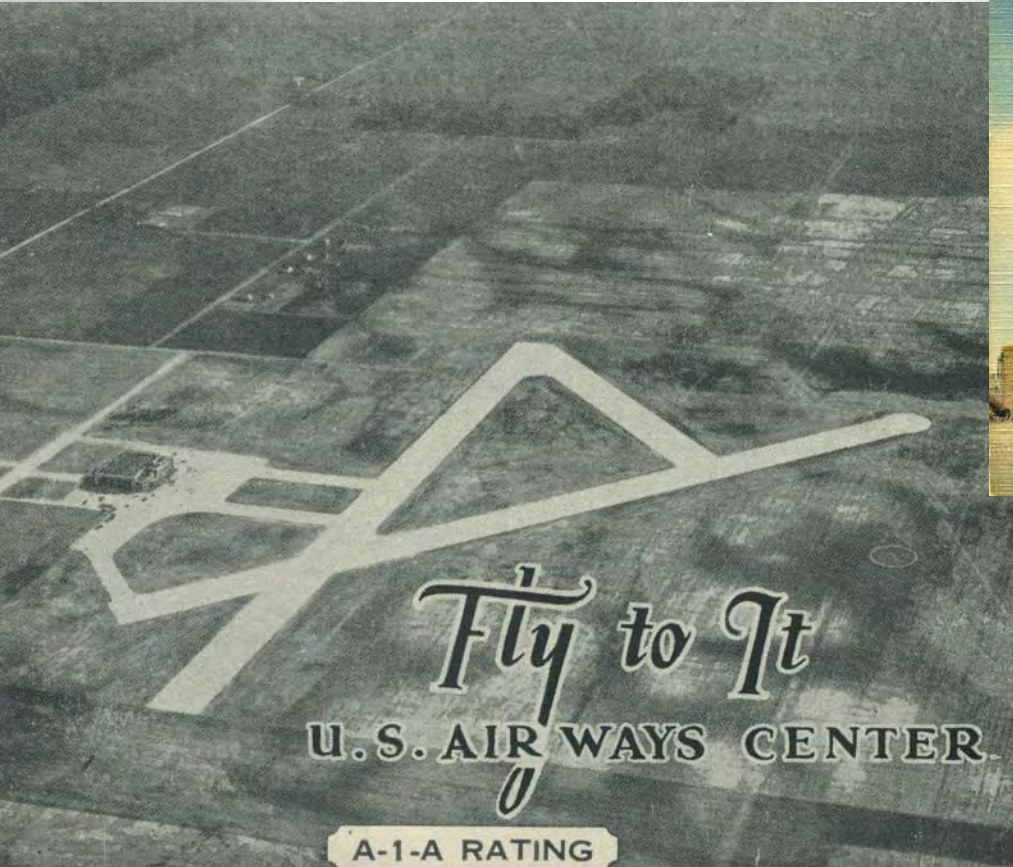
- 1975 Master Plan
- 1987 Noise Impact Study Approval & Implementation
- 1988 LOI & Construction of 1<sup>st</sup> parallel runway
- 1992 Environmental Impact Statement approval
- 1993 PFC approval at \$3.00 level
- 1993 LOI & Construction of 2<sup>nd</sup> parallel runway
- 2000 Project Definition (IAA / Airlines)
- 2000 Submitted Benefit Cost Analysis to FAA for Midfield Terminal Program



## Vision...Planning...Approval (cont'd)

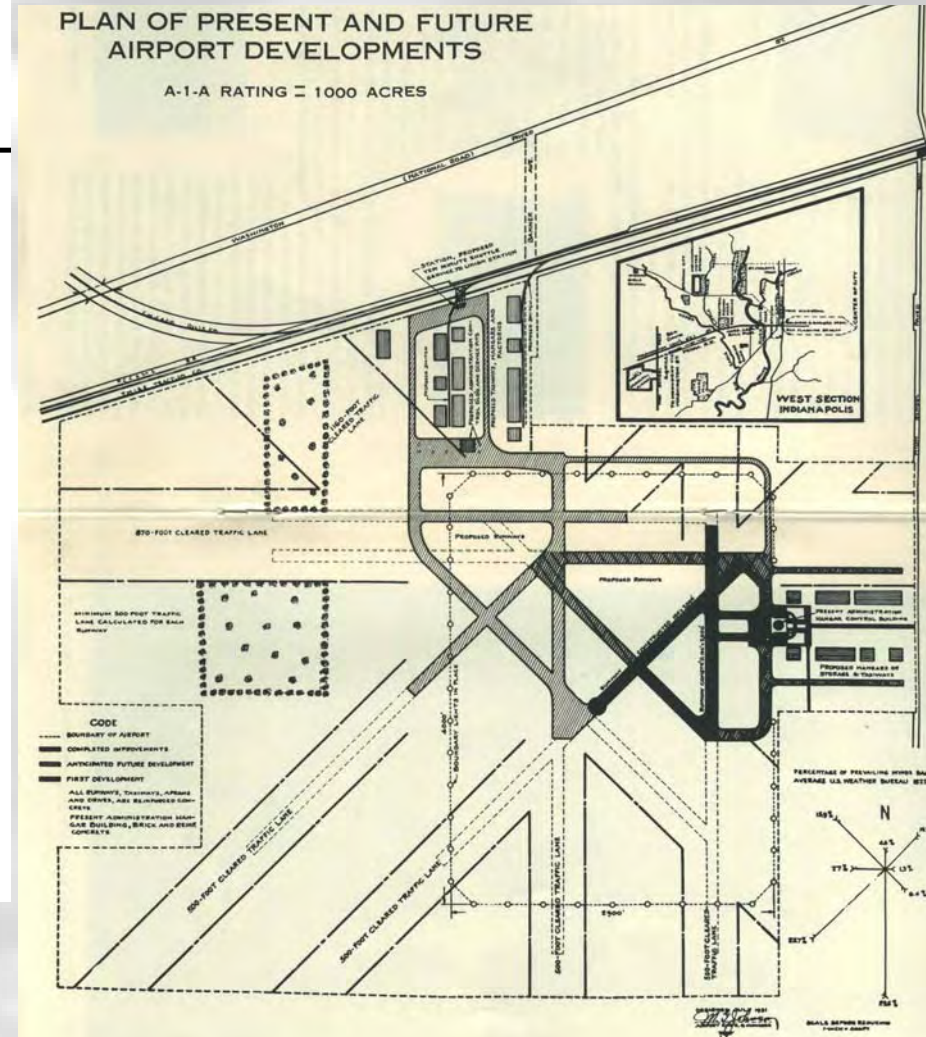
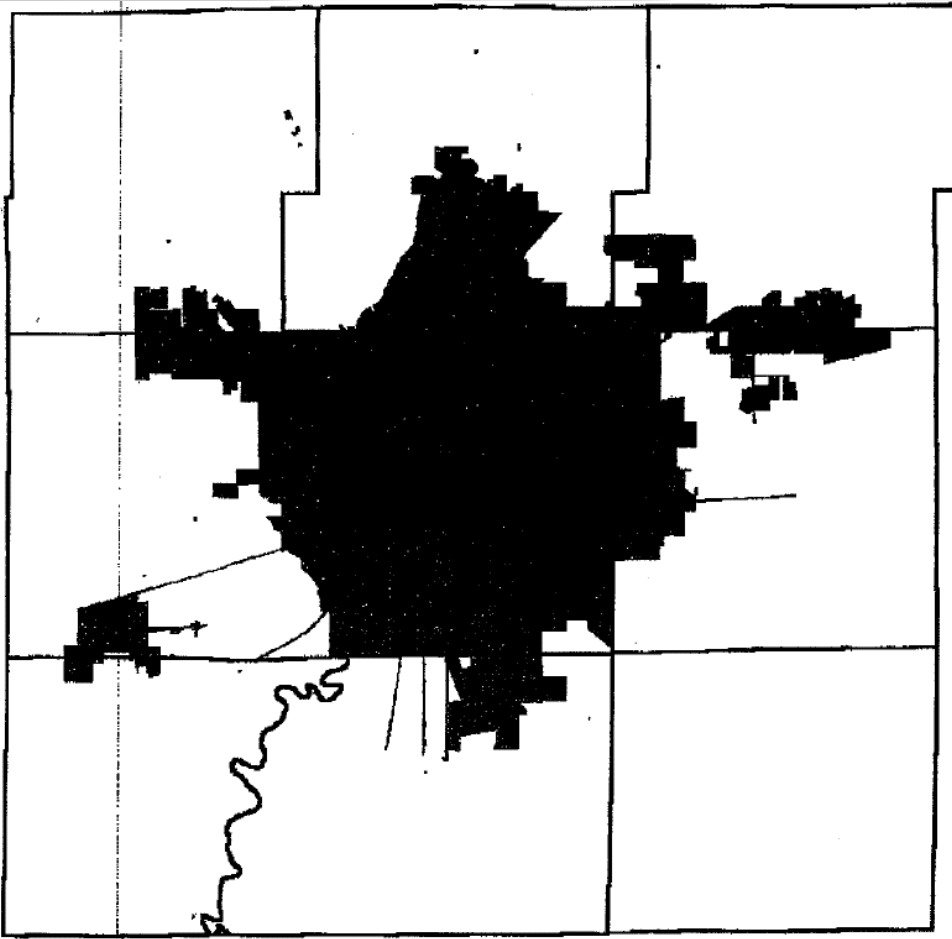
- March 2001 Airlines sign Use Agreement (expires 12/31/10); approves Midfield Terminal project and sets “targets” for Cost per Enplanement and Landing Fee rates
- 2001 Supplemental EIS approval
- 2001 Habitat Conservation Plan approved – 15 year monitoring requirement
- 2002 LOI approval for Midfield Terminal project
- 2002 PFC approval at \$4.50 level; Impose & Use approval for Midfield Terminal project
- 2003 Initial Revenue Bond Issuance; includes partial funding for Midfield Terminal Program (additional bond issues 2004, 2005, 2006, 2008)
- 2005 INDOT completes construction of new I-70 Interchange
- 2006 FAA opens new ATCT (Control Tower)

# Indianapolis International Airport - Past





# Indianapolis International Airport - Past



# Indianapolis International Airport - Past



1931





# Indianapolis International Airport - late 1950's



# Indianapolis International Airport - late 1960's

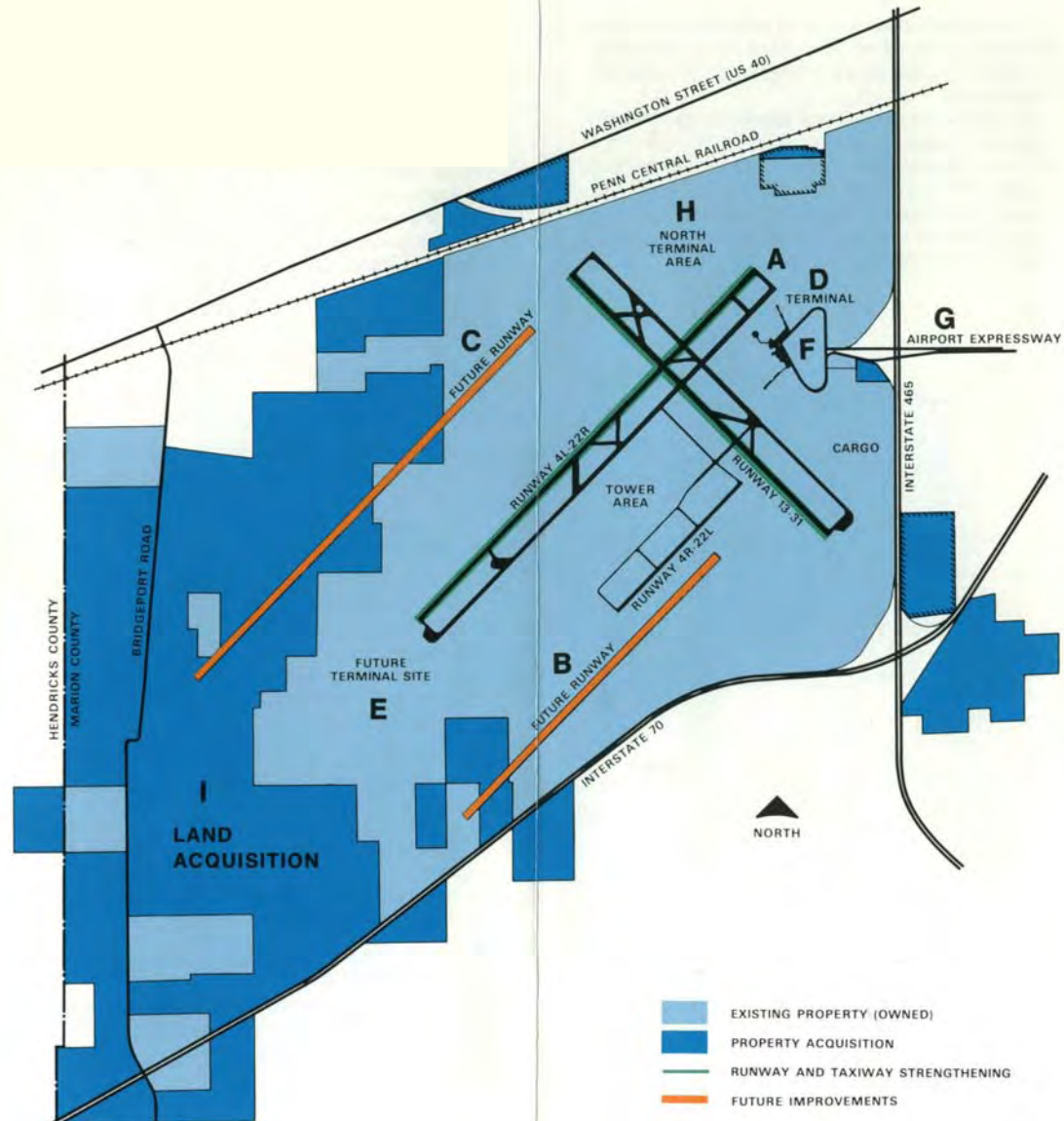




# Indianapolis International Airport - late 1970's

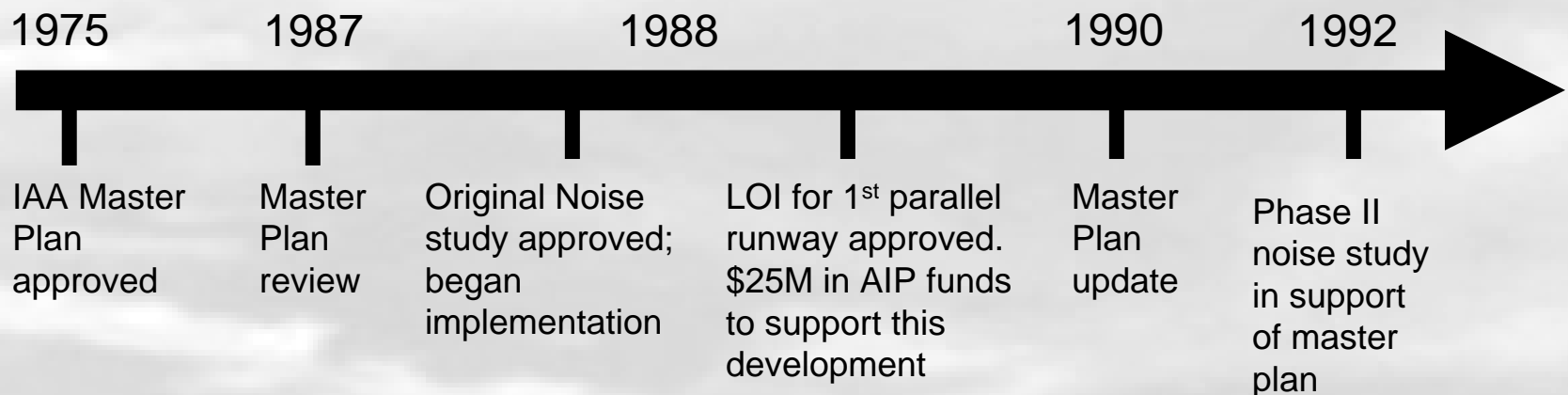


1977



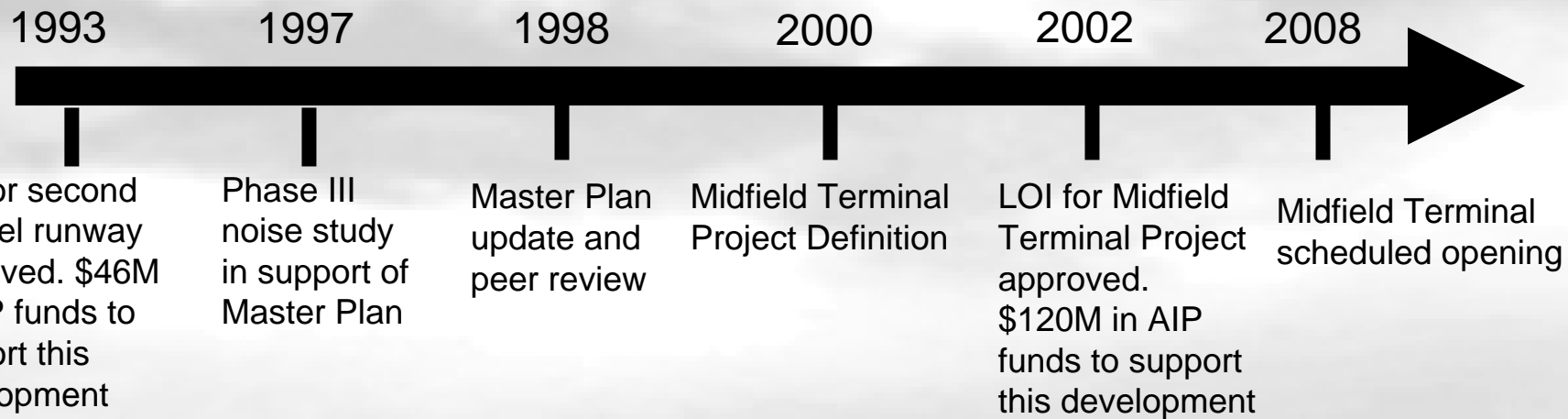
## Master Plan

- The Midfield Terminal Program has been part of a long-term, deliberate planning process dating back to 1975.
- Master Plan adopted in 1975 addressed expansion and construction projects at the Airport System. Recommended relocation of the passenger terminal facilities to a midfield location during the 1980's.
- Master Plan update in 1990 recommended construction of a new terminal in proposed midfield location during the 2000-2005 timeframe.
- Runways were configured and constructed to accommodate a midfield terminal.

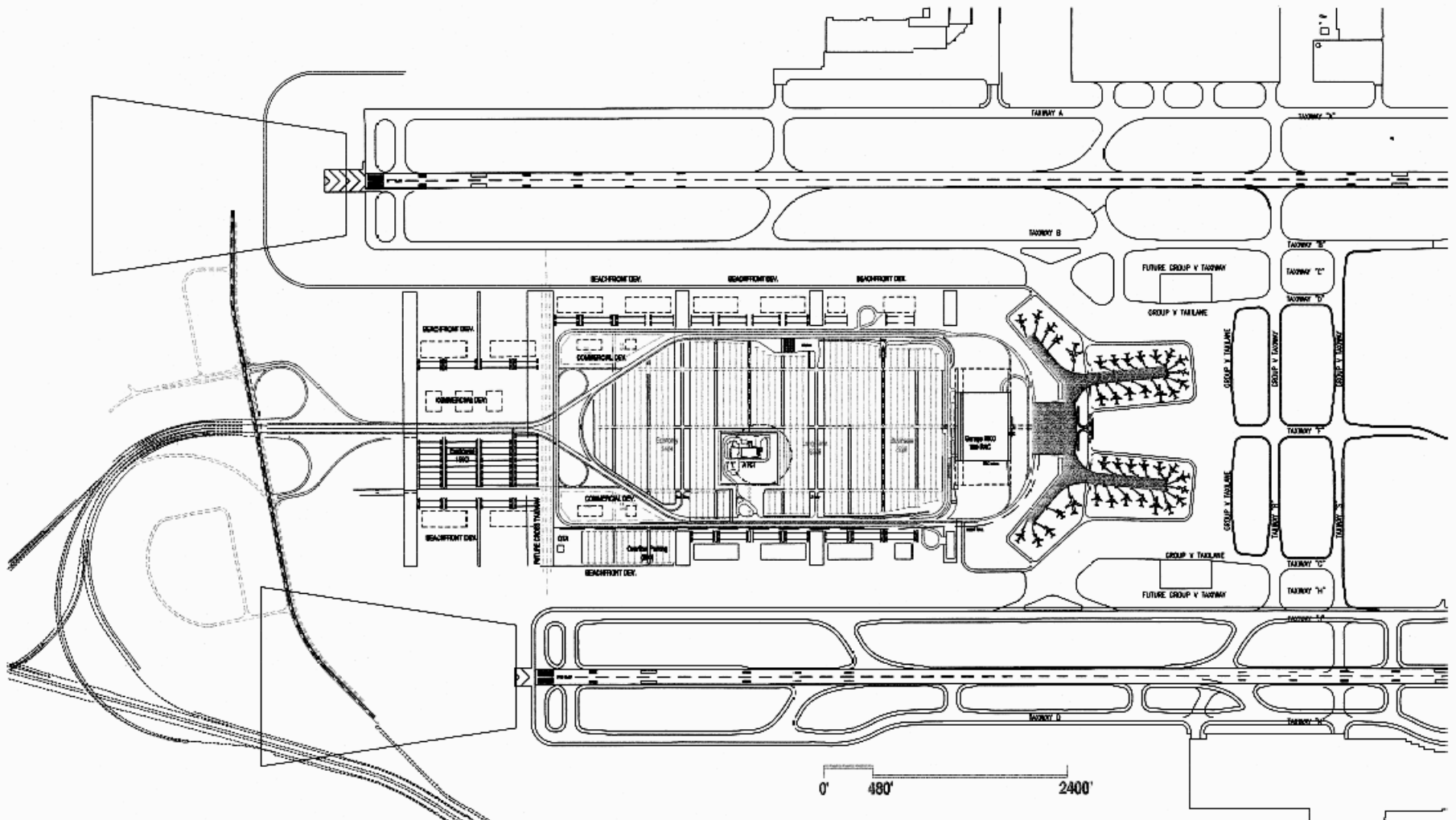




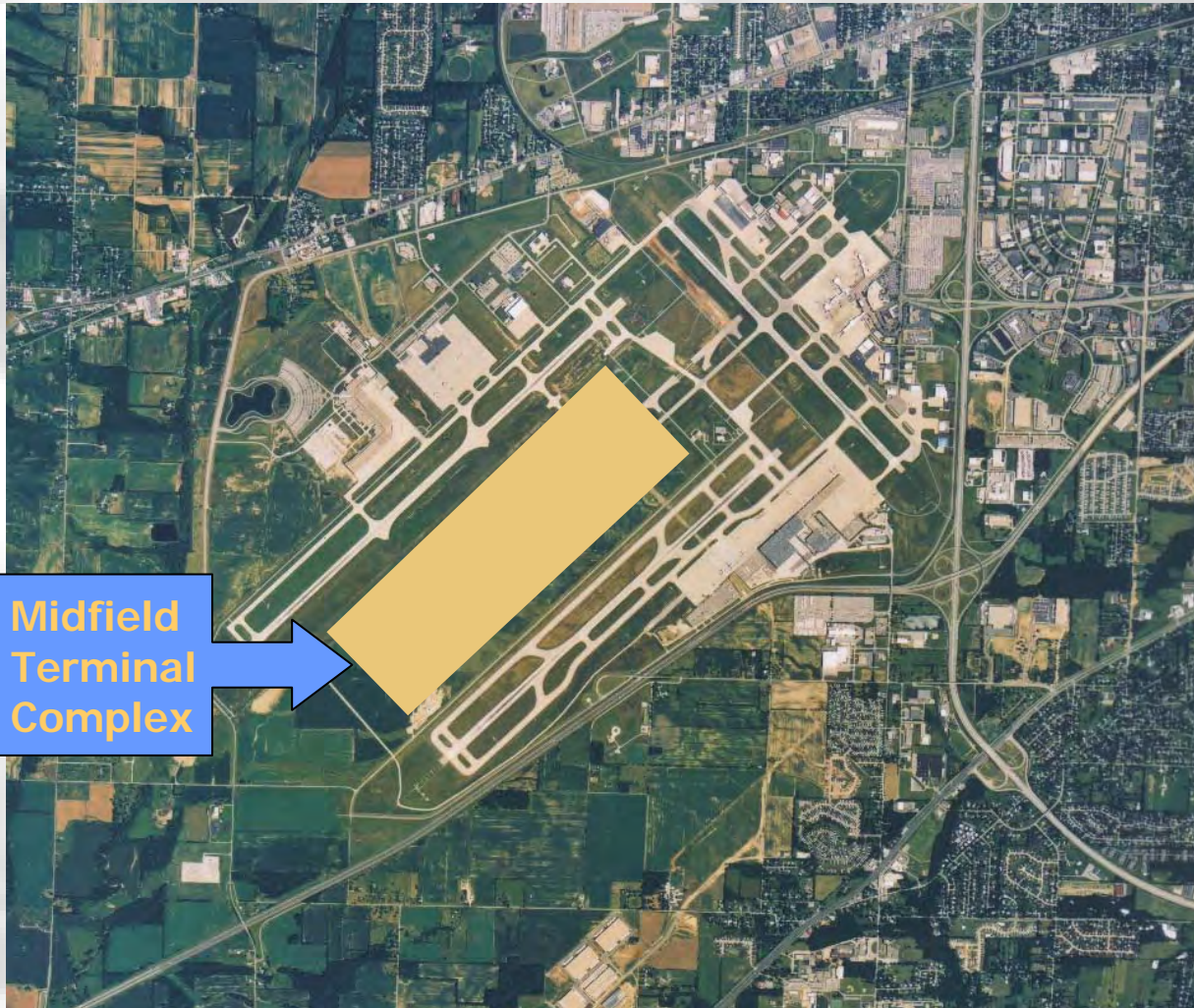
# Master Plan



# Project Definition Site Plan



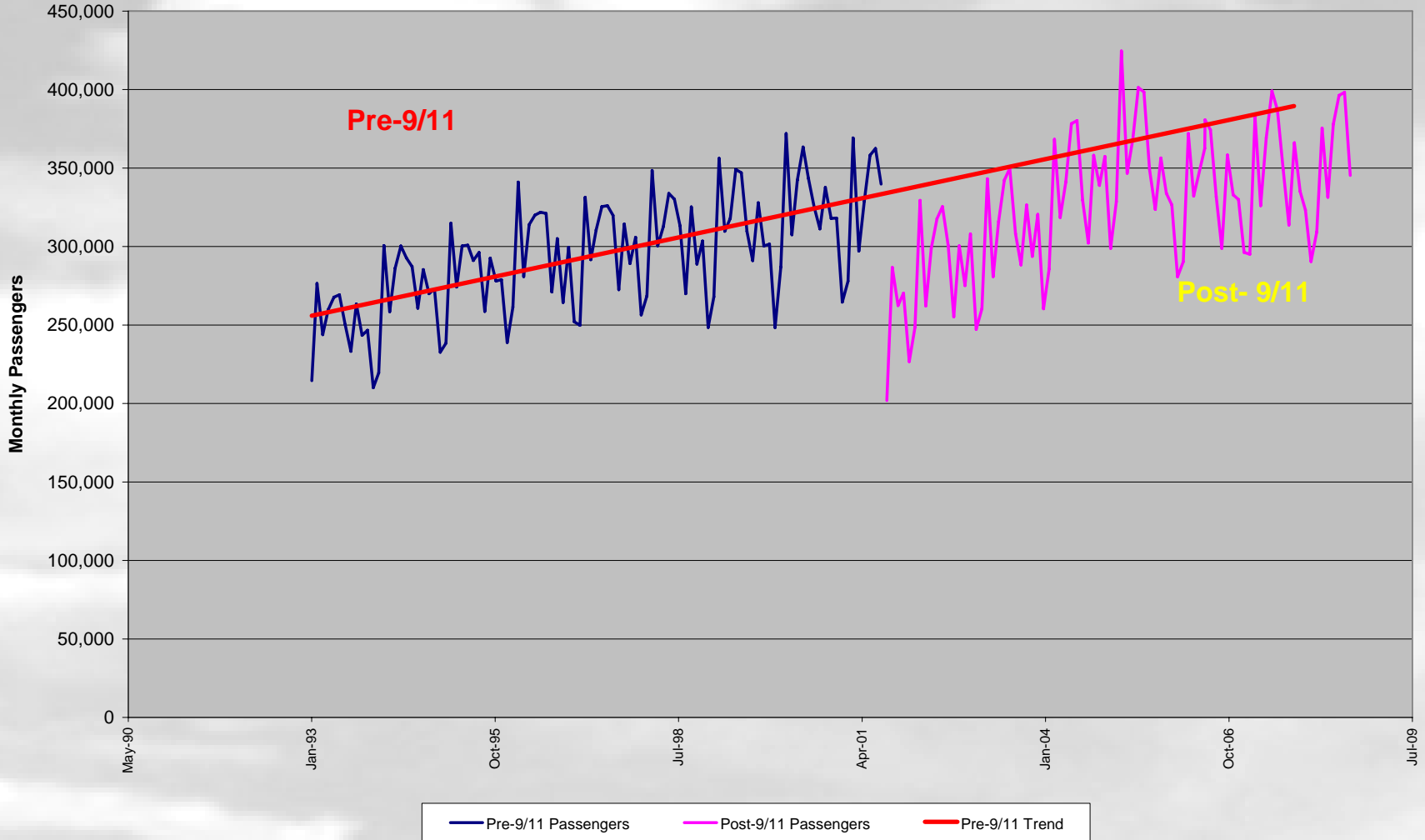
# New Indianapolis International Airport



Midfield  
Terminal  
Complex

# Passenger Recovery Trends through August 2008

Passenger Trends January 1993 through August 2008



The image shows an aerial view of the Indianapolis Airport, featuring several aircraft on the tarmac and a large terminal building. The scene is overlaid with a semi-transparent dark grey banner at the top. The title text is centered within this banner in a bold, dark blue font. The background of the entire image is a bright, cloudy sky.

# **Indianapolis Airport – Aerial View May 2008**



## Current Construction on Affiliated Projects

- INDOT – I-70 Interchange Complete
- FAA – Air Traffic Control Tower and TRACON facility opened April 2006





# New Airport Interchange January 2008



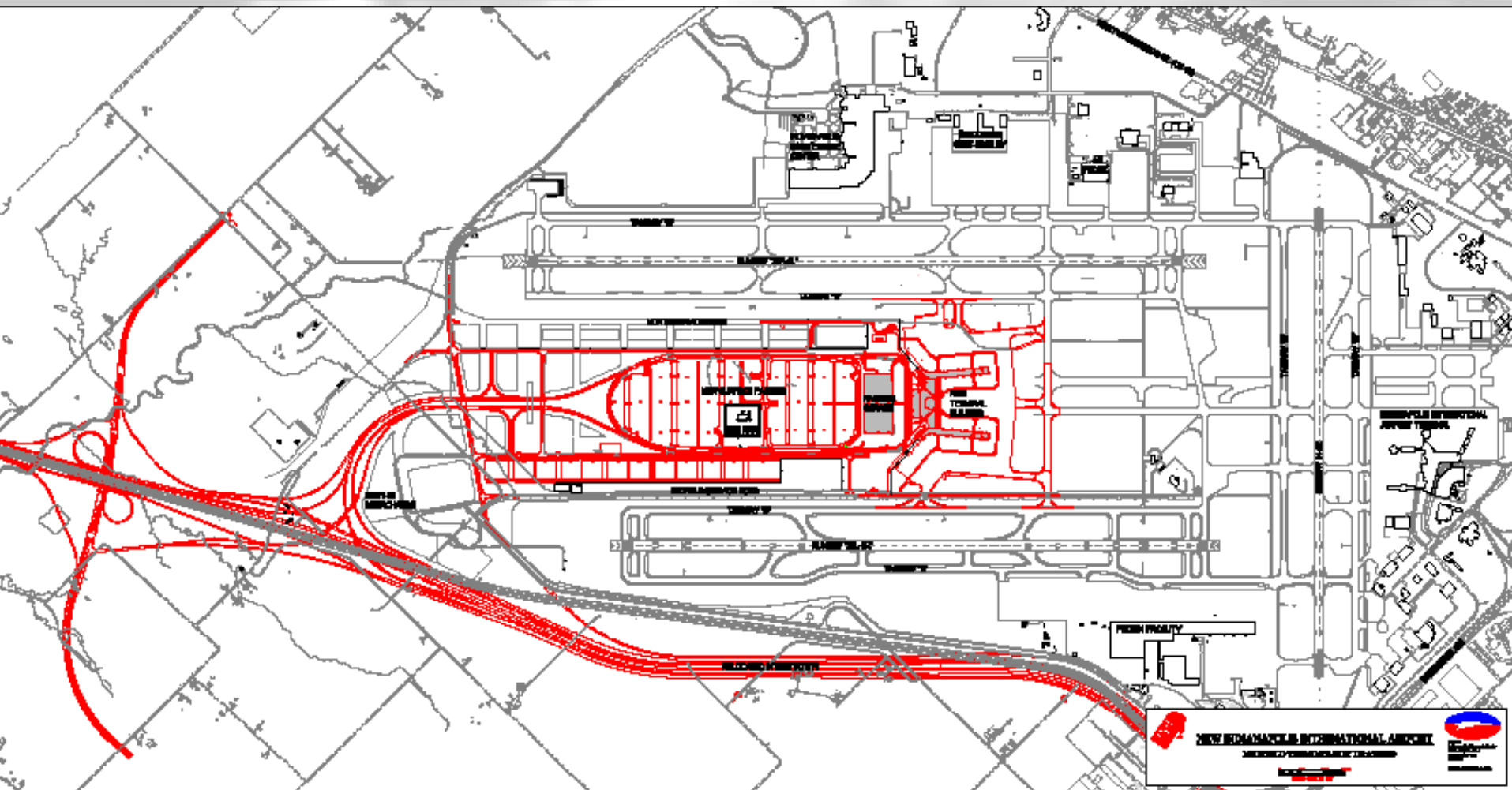


# FAA ATCT & TRACON Facility





# Midfield Terminal Program



# Existing Airport's Architecture



# New Indianapolis Airport Model



# New Indianapolis Airport – October 2008





# Midfield Terminal

## ➤ Terminal Design

- City Gateway
- Two concourses
- 1.2 million square feet
- 40 gates
- 90,000 square feet of retail space
- 15,000 square feet administrative space

## ➤ Parking

- 21,000 spaces
- Surface lot and parking structure

## ➤ Adjacent/Area Development

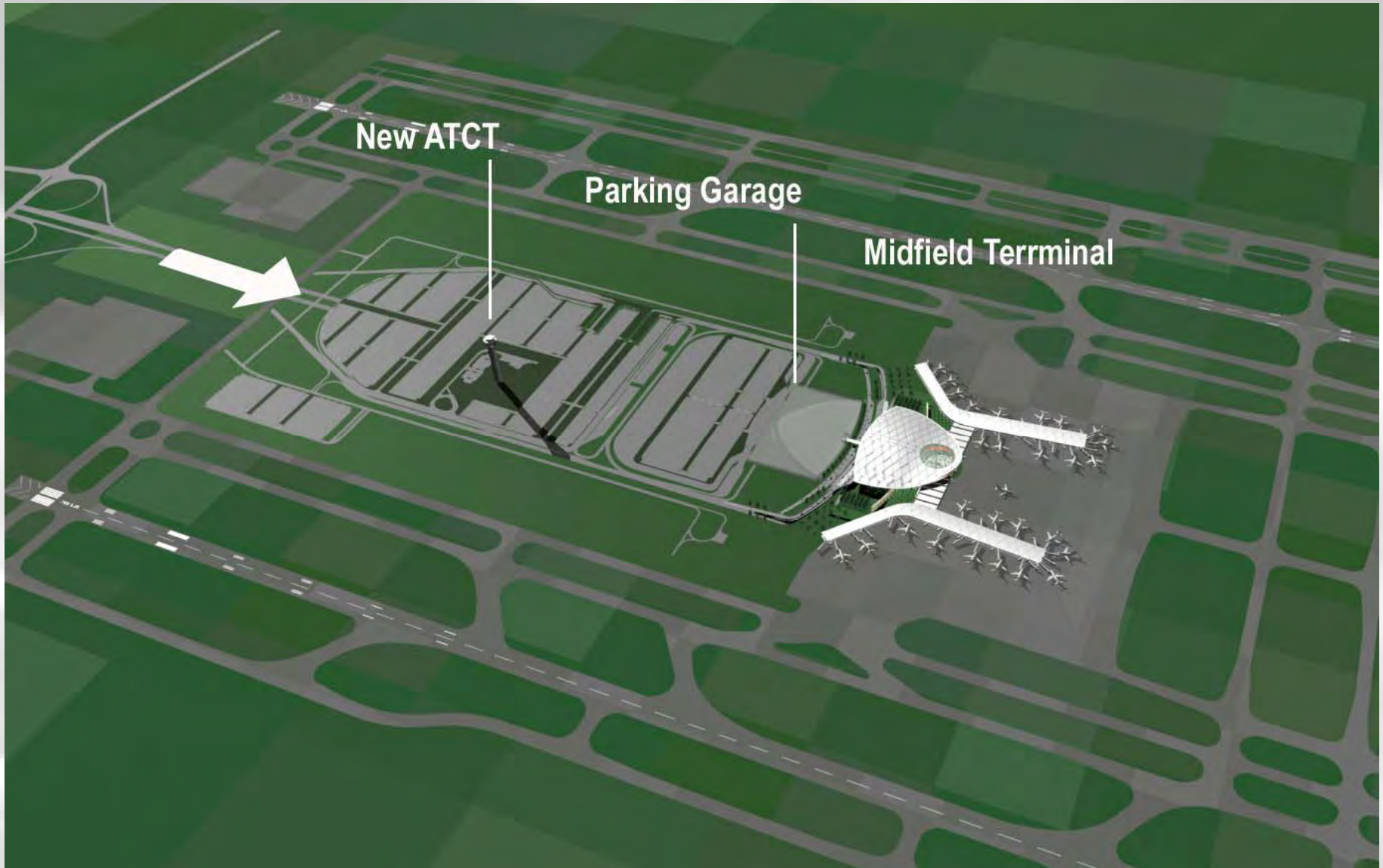
- Hotel
- Rental Car facilities
- Retail, Gas, Restaurants and other Concessions

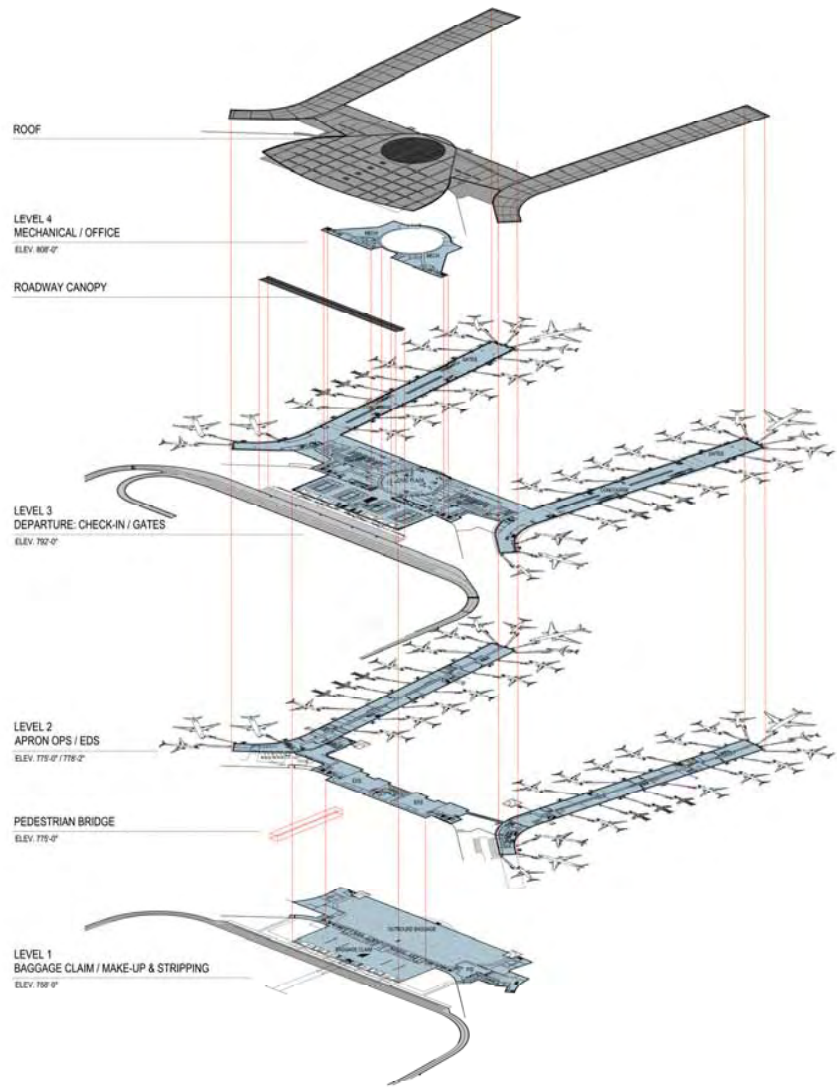
## ➤ Economic Impact

- 1,200 construction jobs



# Site Plan





ROOF

LEVEL 4  
MECHANICAL / OFFICE  
ELEV. 808'-0"

ROADWAY CANOPY

LEVEL 3  
DEPARTURE, CHECK-IN / GATES  
ELEV. 792'-0"

LEVEL 2  
APRON OPS / EDS  
ELEV. 178'-0" / 178'-2"

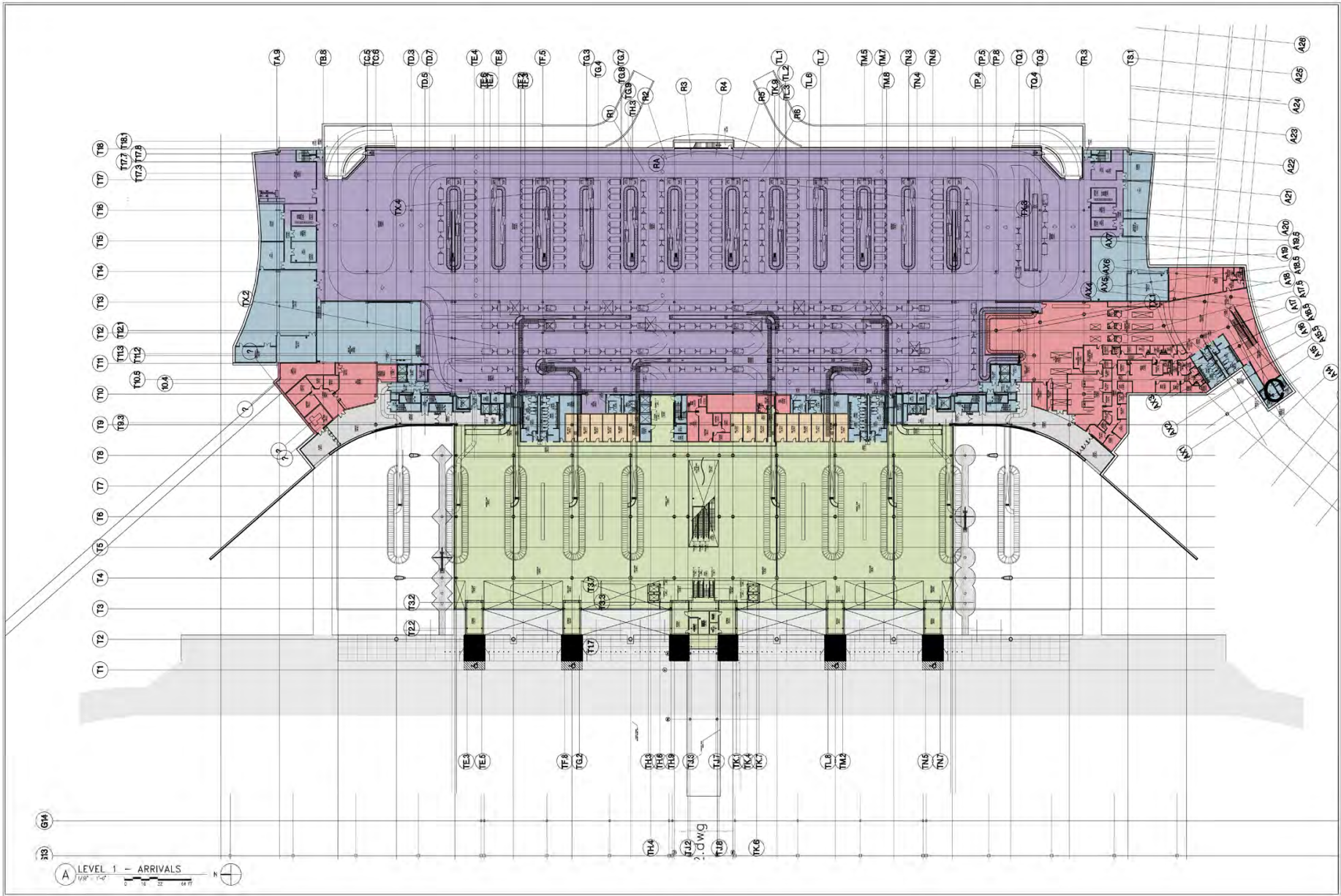
PEDESTRIAN BRIDGE  
ELEV. 178'-0"


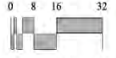

LEVEL 1  
BAGGAGE CLAIM / MAKE-UP & STRIPPING  
ELEV. 158'-0"

LEVEL ORIENTATION DRAWING  
NOT TO SCALE





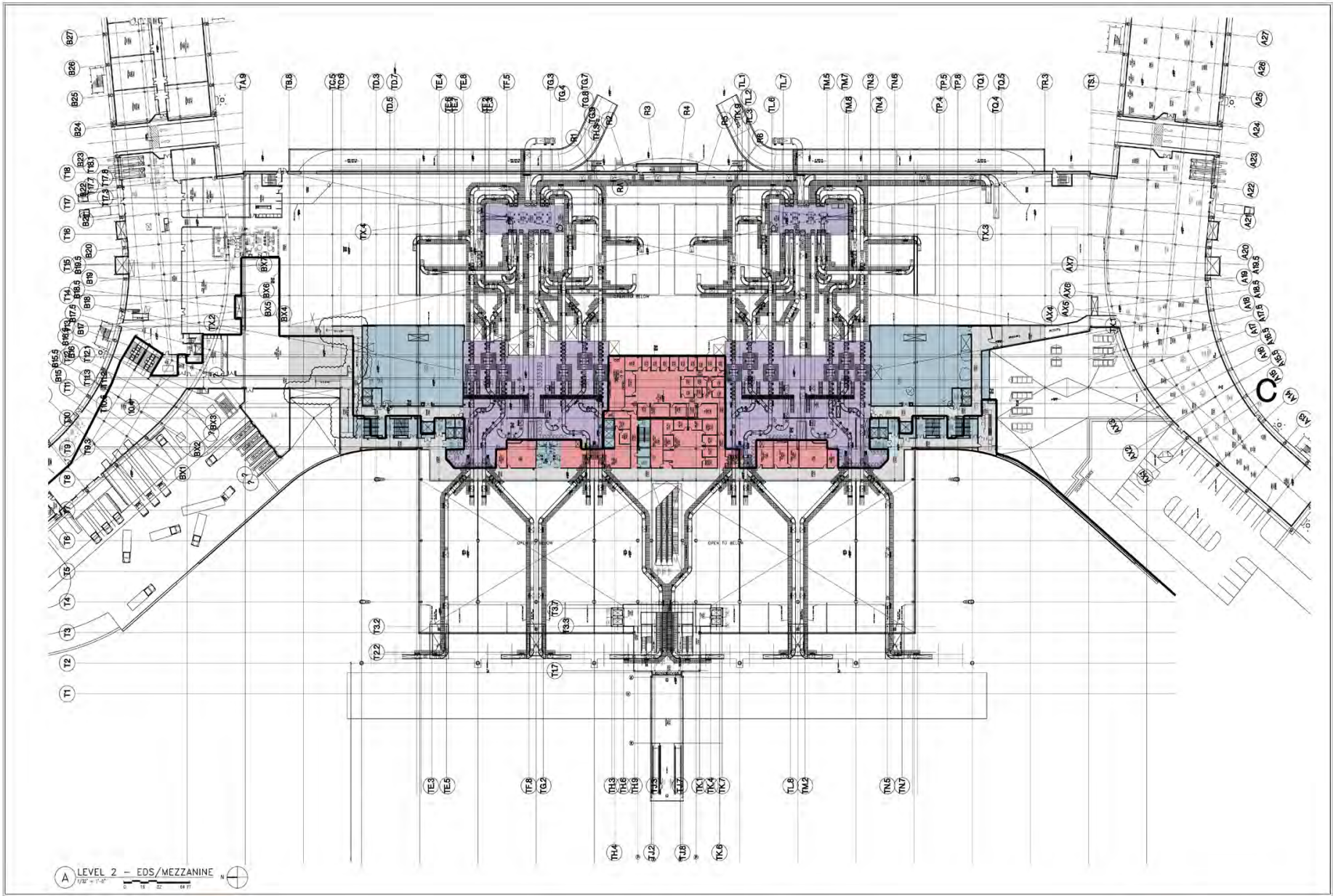


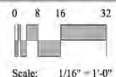
**THE NEW INDIANAPOLIS AIRPORT**  
 INDIANAPOLIS AIRPORT AUTHORITY  
12 APRIL 2005 24100





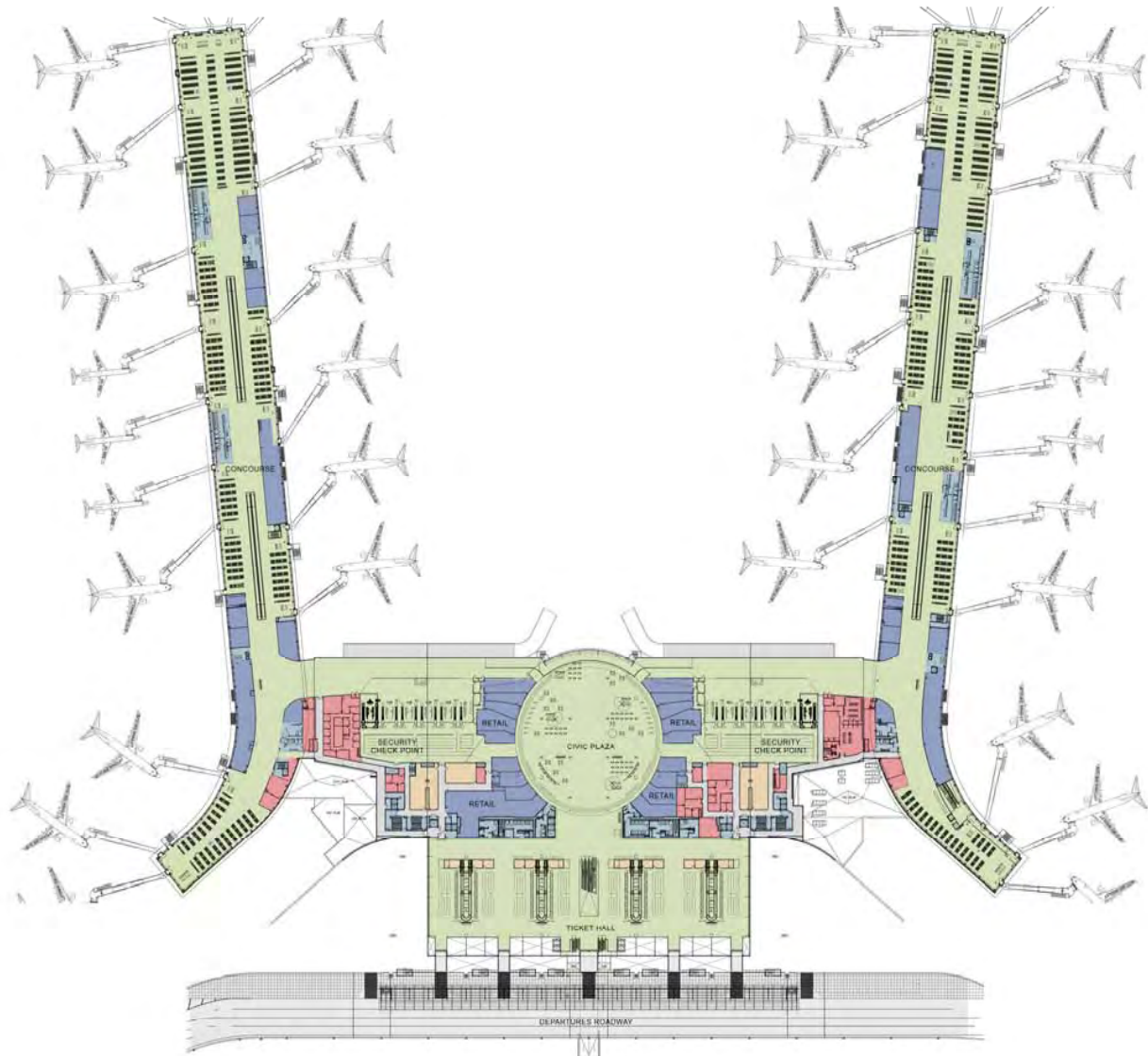
A LEVEL 2 - EDS/MEZZANINE  
 1/16" = 1'-0"



THE NEW INDIANAPOLIS AIRPORT  
 INDIANAPOLIS AIRPORT AUTHORITY  
 12 APRIL 2003



AERO DESIGN  
 LABOR



LEVEL 3 DEPARTURES

- LEGEND:**
- RETAIL
  - BUILDING CORE/MECHANICAL
  - AIRLINE BUILDOUT
  - NON AIRLINE BUILDOUT
  - BACK OF HOUSE CIRCULATION
  - PUBLIC CIRCULATION
  - BAGGAGE SYSTEM

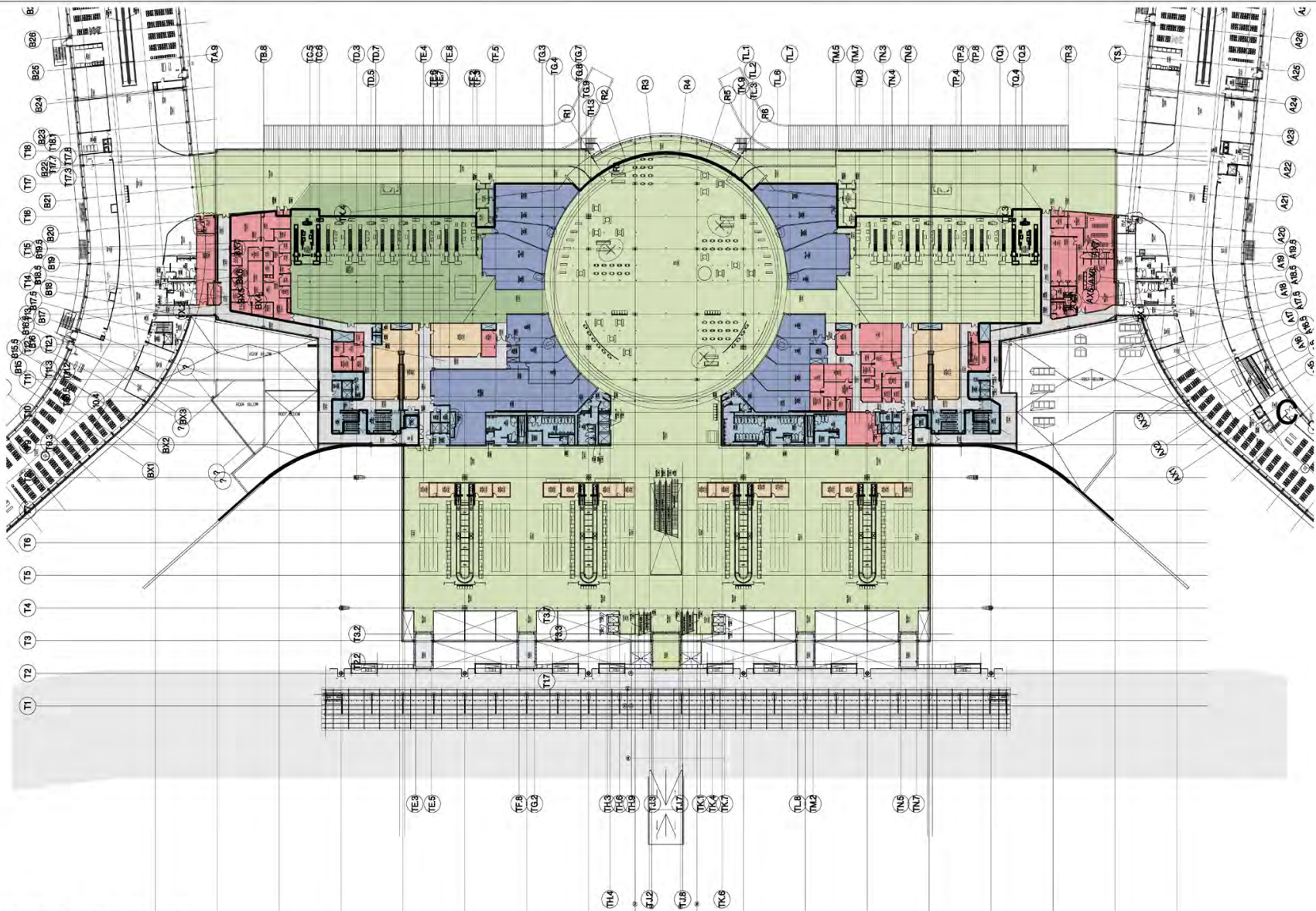


THE NEW INDIANAPOLIS AIRPORT  
 INDIANAPOLIS AIRPORT AUTHORITY  
8 JUNE 2014 24100


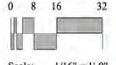



AERO DESIGN GROUP



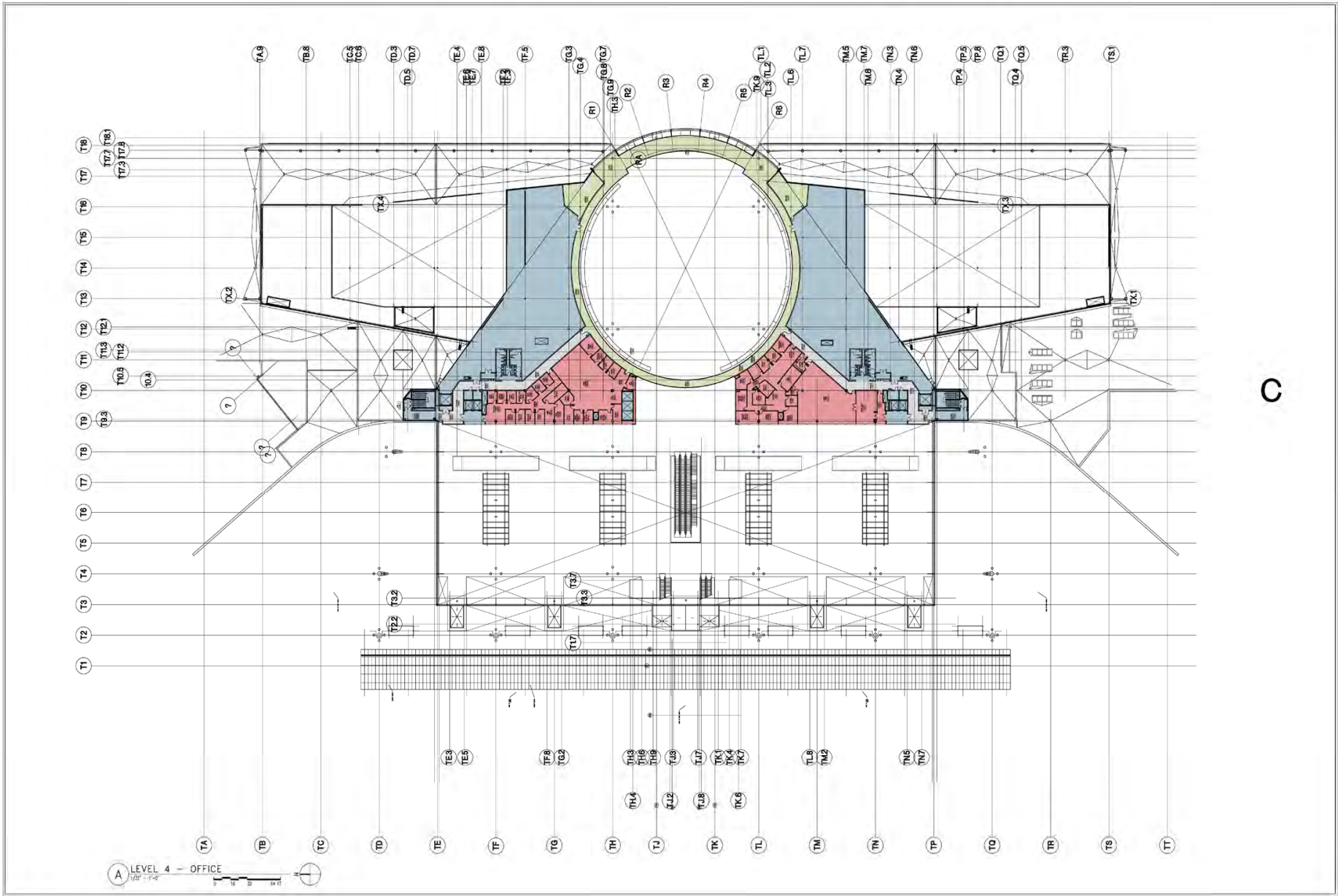


A LEVEL 3 - DEPARTURES  
 1/32" = 1'-0"

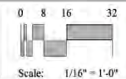




**THE NEW INDIANAPOLIS AIRPORT**  
 INDIANAPOLIS AIRPORT AUTHORITY  
12 APRIL 2003 24100



C



THE NEW INDIANAPOLIS AIRPORT  
INDIANAPOLIS AIRPORT AUTHORITY  
12 APRIL 2001 24100



AERO DESIGN  
INC.



# Ticket Hall – October 2008





# Twilight Sky from Civic Plaza





# Aerial Photo of Terminal & Apron



January 2006



January 2007



January 2008



# Aerial Photo of Midfield Site – February 2008





# Tunnel Boring Machine for CEP Utility Connector – Summer 2006



# CEP Tunnel Boring Machine Progress – Oct 2006





# CEP Tunnel Boring Machine Progress – Nov. 2006



# Terminal Construction Progress Spring 2007





# Terminal Construction Progress Spring 2007



# Terminal Construction Progress Spring 2007





# Terminal Construction Progress Baggage Handling System





# Terminal Construction Progress Spring 2007



# Garage Construction Progress March 2007





And now...





# Concourse Construction Progress March 2007



October 2008





# Civic Plaza Steel Panorama



# Concourse Construction Progress





# New Indianapolis Airport Entry and Enplane Drive – taken from garage roof Feb. 2008



# New Indianapolis Airport Entry

## October 2008





# New Indianapolis Airport Pedestrian Bridge



# Pedestrian Bridge - October 2008





# New Indianapolis Airport Deplane Road Bag Claim Level – Looking South



2008/02/29

# Ticket Hall



2008/01/28



# Ticket Counters - Then



2008/02/29

And Now. . .





# Civic Plaza



# Civic Plaza – October 2008





# North Security Screening Check Point



2008/02/29

# Screening Checkpoint October 2008





# Concourse A Progress



2007/12/07

## Escalators to Baggage Claim Area (Civic Plaza in background)





# Escalators up to Civic Plaza October 2008



# Terminal View Looking South West





# Exterior View of Concourse A



# Parking Garage Looking West





# View of Terminal and Parking Garage Looking East



# Parking Garage Roof Looking West





# New Parking and Revenue Control Building



# Loading Dock Area on North Side of Concourse B





# New Fire Station Dedicated January 18, 2008



# New Airport Operations Center Progress





---

# Airport Arts & Culture Program

New Indianapolis Airport

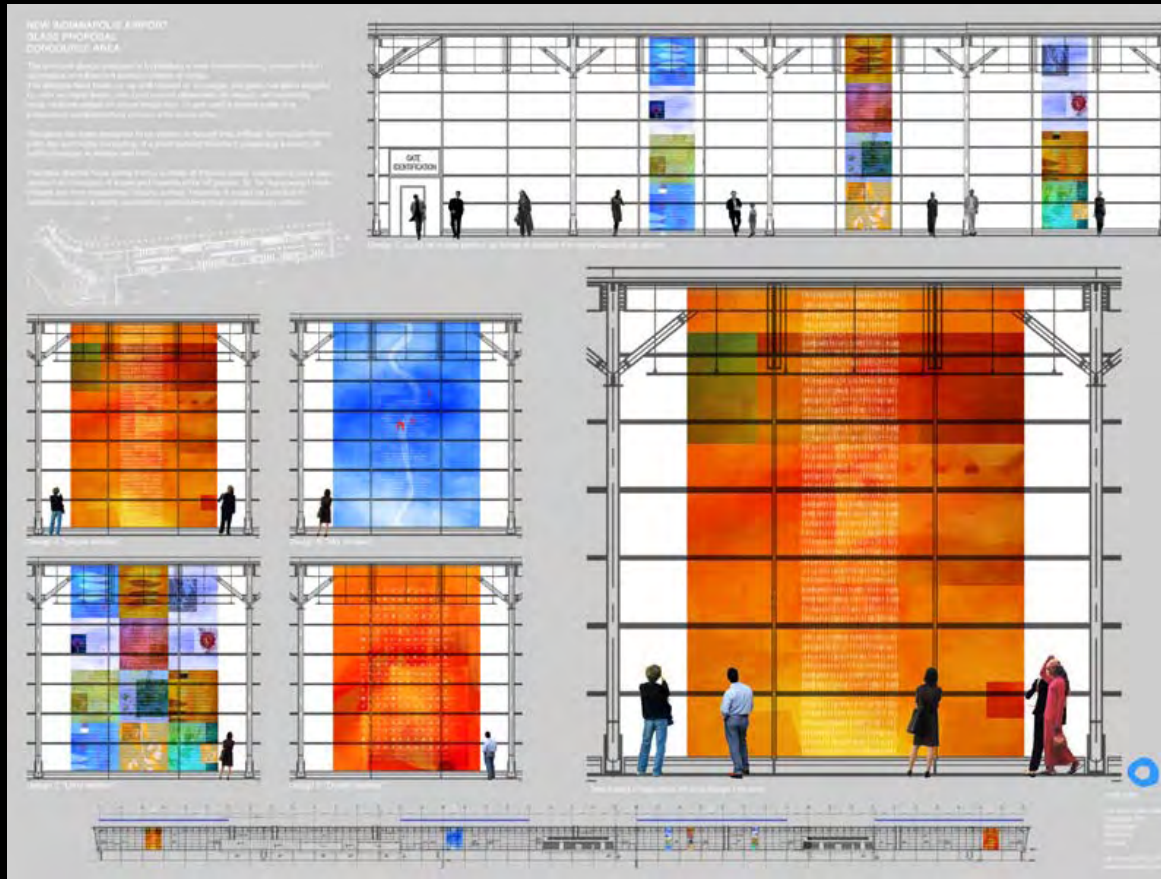
# Types of Artwork

---

- Permanent, integrated into structure
- Permanent, attached to structure
- Permanent, freestanding
- Temporary (required accommodations in design)
- Performing arts



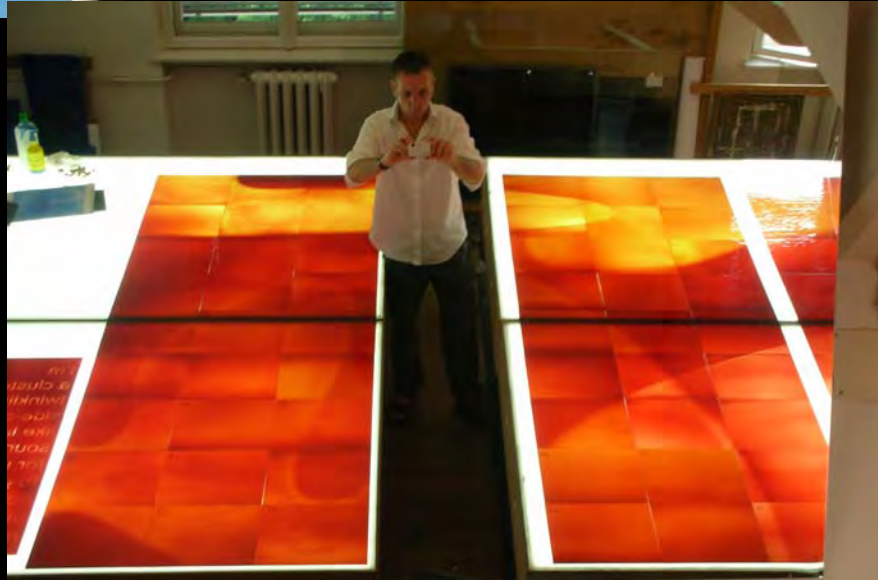
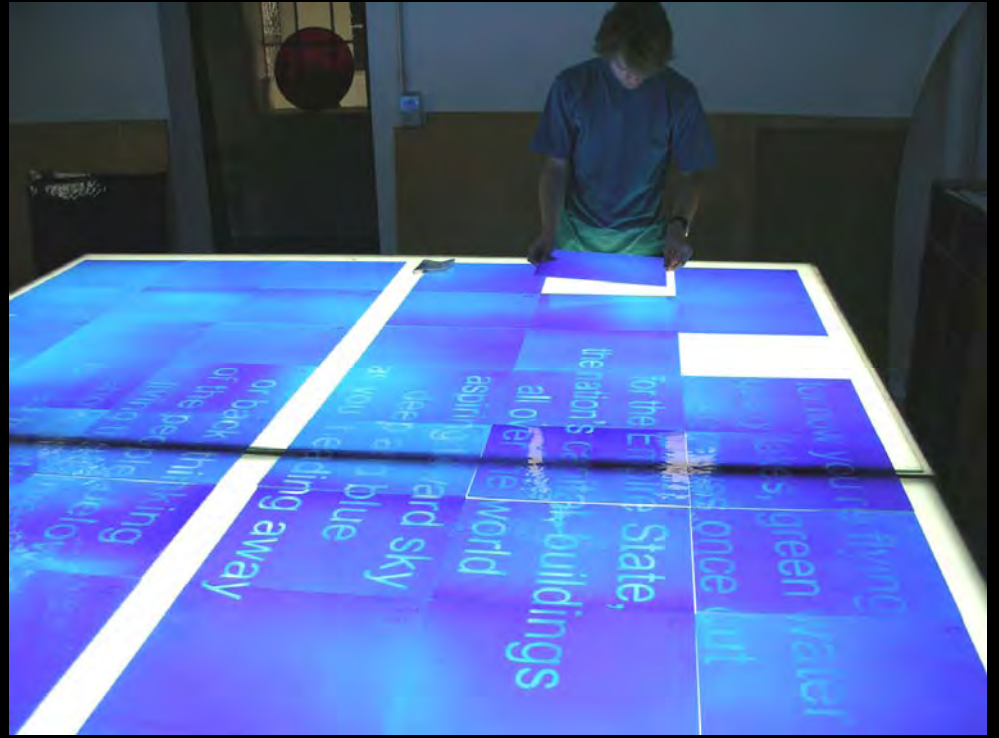
# Integrated Artworks



# Blowing the Glass (movie)











You are of that swiftness that below  
by glacial ice. And though  
on prairie plowed flat  
of ancient seas,  
formed from the silt  
above bedrock  
living their lives  
of the people below  
or back, thinking

I will bring you someone whole  
and you will bring me someone whole  
and we be twice as strong  
and we be twice as sure  
and we will have us twice as much  
of love  
and everything

our personal blend

Martin Donlin, Artist  
MARTIN DONLIN  
Produced by Martin Donlin







Martin Dunlin art glass installation May 9, 2007



# View from Concourse B – October 2008



# Integrated Artworks

---





# Integrated Artworks

---



Dale Enochs—concept drawing, carved limestone panels with bronze



*Phobocnemid*

*Agilis*

*Amphibolobanschi*

*Agilis*

*Agilis*

Q



# Autumn Prairie Morning

Mosaic by artist Dixie Friend Gay



# Freestanding Artworks

**"BAGGAGE CLAIM"** CAST BRONZE  
RON BARON BROOKLYN, NY



INSTALLATION VIEW



DETAIL





## Midfield Cost Projections

➤ Terminal Complex Total	\$429,600,000
➤ Site	\$131,900,000
➤ Airside Construction	\$ 47,000,000
➤ Parking Garage (Expanded)	\$ 103,500,000
➤ I-70/INDOT	\$ 41,600,000
➤ FAA/Airfield Facilities	\$ 40,100,000
➤ Other Construction	<u>\$ 40,600,000</u>
➤ <b>TOTAL CONSTRUCTION</b>	<b>\$ 834,300,000</b>
➤ Construction Management and Soft Costs	<u>\$228,900,000</u>
➤ <b>TOTAL PROGRAM</b>	<b>\$1,063,200,000</b>



## Challenges

- Volatile airline industry
- New federal agency to respond to post-9/11 security requirements
- Coordination with current airport operator during design phase
- Balancing spending on capital improvements at existing airport vs. Midfield Program
- Runway 14-32 modifications
- Timing and costs of ancillary projects



# THE NEW INDIANAPOLIS INTERNATIONAL AIRPORT



# INDEED! IT'S HERE.

