

ILS or LOC RWY 12R

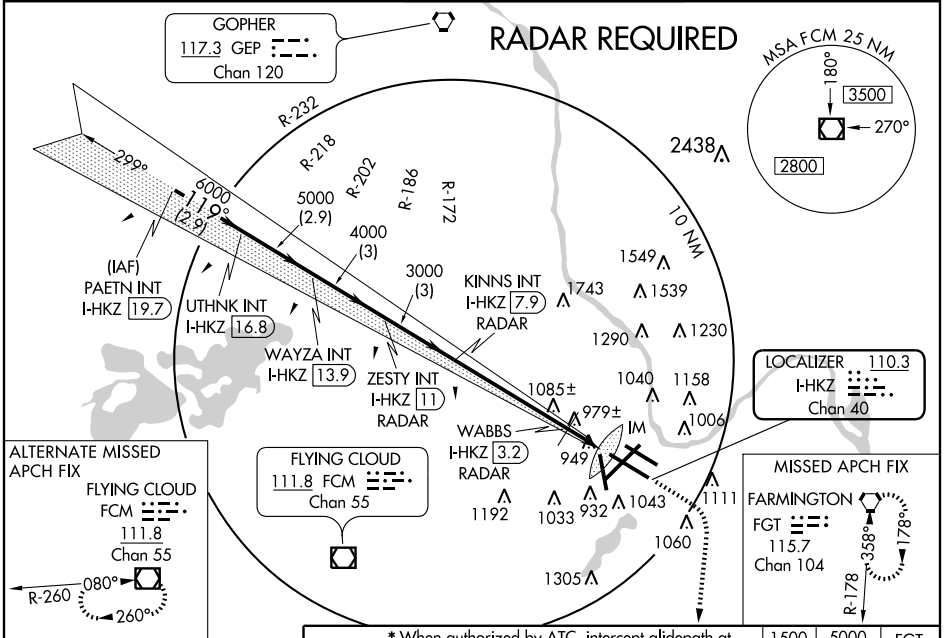
MINNEAPOLIS-ST PAUL INTL/WOLD-CHAMBERLAIN (MSP)

LOC/DME I-HKZ 110.3 Chan 40	APP CRS 119°	Rwy Idg 10000 TDZE 841 Apt Elev 841
--	------------------------	--

⚠ For inoperative ALSF, increase S-ILS 12R Cat E visibility to RVR 4000 and S-LOC 12R Cat E visibility to 2.

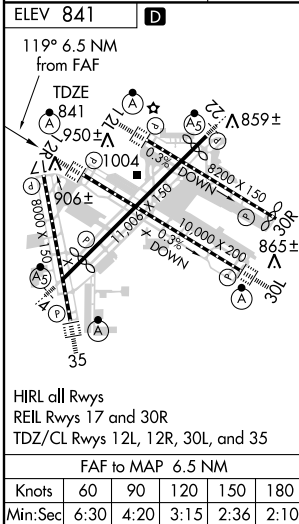
⚠ MISSED APPROACH: Climb to 1500, then climbing right turn to 5000 direct FGT VORTAC and hold.

ATIS ARR 135.35 239.275 DEP 120.8	MINNEAPOLIS APP CON 119.3 335.5	MINNEAPOLIS TOWER 123.95 273.55 (12L-30R) 126.7 273.55 (12R-30L, 4-22) 123.675 273.55 (17-35)	GND CON N 121.8 348.6 S 121.9 348.6 W 127.925	CLNC DEL 133.2
---	---	---	---	--------------------------



NC-1, 12 FEB 2009 to 12 MAR 2009

NC-1, 12 FEB 2009 to 12 MAR 2009



* When authorized by ATC, intercept glidepath at ZESTY, 4000; or WAYZA, 5000; or UTHNK, 6000.

CATEGORY	A	B	C	D	E
S-ILS 12R	1041/18 200 (200-½)				
S-LOC 12R	1420/24	579 (600-½)	1420/50 579 (600-1)	1420/60 579 (600-1¼)	1420-1½ 579 (600-1½)
CIRCLING	1420-1	579 (600-1)	1420-1½ 579 (600-1½)	1460-2 619 (700-2)	1660-3 819 (900-3)
WABBS FIX MINIMUMS					
S-LOC 12R	1240/24 399 (400-½)		1240/40 399 (400-¾)	1240/50 399 (400-1)	
CIRCLING	1360-1	519 (600-1)	1360-1½ 519 (600-1½)	1460-2 619 (700-2)	1660-3 819 (900-3)