

THE PERINATAL EXPERT PANEL

A Collaboration for the Successful Reduction of Perinatal HIV Transmission

2007 Perinatal Grantees Meeting

Centers for Disease Control and Prevention

April 29, 2007 – May 2, 2007

Rashidah Abdul-Khabeer, RN, MHS

Deputy Director, The Circle of Care Program

PHILADELPHIA, PA

The Circle of Care

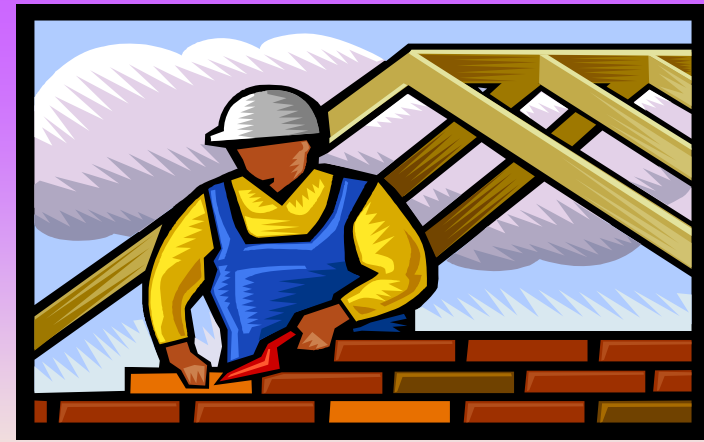


- Founded in 1989 to provide integrated and consumer-centered services responsive to the priorities of individuals infected and affected by HIV/AIDS epidemic
- Designated Ryan White Title IV grantee for the Philadelphia area
- Network of 18 agencies and 9 affiliate hospitals providing medical care, specialty care, supportive services, education and advocacy
- Project of the Family Planning Council
- In 2006, 2243 HIV infected women, adolescents, children and their families were served
 - 26.3% increase over 2005 client base (1776 clients)

Our Mission

The Circle of Care is committed to the provision of quality comprehensive family-centered care and services for HIV infected and affected women, children, adolescents, and their families and to the prevention of HIV disease in these populations.

Laying the Foundation



1989 The Circle of Care founded

- One of the first Ryan White Title IV programs funded for services in the United States
- Women, infants, adolescents and families have always been the core population served by TCOC

1994 ACTG076 Study

1995 HRSA Women's Initiative (WIN)

- The Circle of Care was one of nine national sites funded to implement 076 recommendations to reduce perinatal transmission
- Piloted 'one-stop' model in the three hospitals with the highest number of unregistered deliveries in the city of Philadelphia

2000 CDC Perinatal Supplemental Funding

- Offered in collaboration with HRSA, initial RFP to enhance perinatal prevention activities included media campaign targeting women of color

The Circle of Care

Perinatal HIV Transmission Prevention Initiative

Expansion of a continuum of care and supportive services to HIV+ pregnant women throughout Philadelphia

- One-stop: specialty prenatal services for HIV+ pregnant women, intensive HIV case management, peer counseling
- Implementation of the Safe Baby Campaign
 - Utilizing the media to increase awareness about perinatal transmission of HIV/AIDS and prevention
- HIV testing in Prenatal settings
 - To increase HIV testing in Prenatal clinic, funded HIV testing
 - To increase the ability to offer HIV screening opportunities to women in labor with undocumented HIV status, piloted expedited testing
- Perinatal Expert Panel
 - A Morbidity Mortality Panel to discuss mother to child transmissions identified at pediatric centers funded through the Ryan White Title IV Family program

Why did Philadelphia need this panel?

- Between 1995 and 2003, rate of perinatal transmission steadily increased outside of our program in Philadelphia
- Philadelphia surveillance documented AIDS in children but had not codified perinatal transmission.
- The Circle of Care as the Title IV grantee funding HIV services in the City's premier specialty pediatric hospitals had data access
 - The Circle of Care was aware of 98% of the babies that were infected, and we were able to analyze information on the circumstances of transmission
 - Use information to improve TCOC Perinatal HIV Transmission Prevention Initiative, but needed a mechanism to impact prenatal care outside of the program
- Philadelphia Department received grant for Enhanced Perinatal Surveillance and collaborated with The Circle database for matching mother–baby pairs, but did not have perinatal prevention initiative.
- There was a need for a mechanism to join these disparate parts

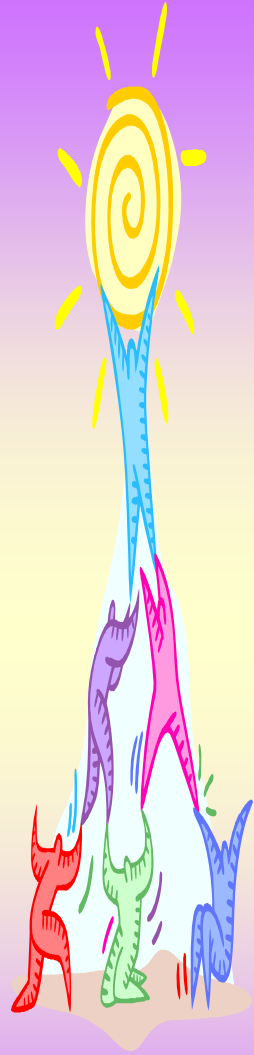
Constructing the Perinatal Expert Panel



- Obstetricians
- Adult HIV Specialists
- Pediatric HIV Specialists
- Nurse Practitioners
 - Internal Medicine, Infectious Diseases Specialty
- Perinatologists
- Bioethicist
- Hospital Administrators
- Coordinating Staff
 - Circle of Care
 - Pennsylvania MidAtlantic AIDS ETC

Panel Goals

- Initial Goal: To discuss cases of perinatal HIV transmission on an individual basis in a safe non-competitive environment
 - Determine missed opportunities for prevention of transmission
 - Identify similarities, differences in conditions among identified transmissions
 - Assess for appropriateness of care management and linkages to necessary medical and supportive services
 - Make recommendations to The Circle of Care for follow-up, advocacy and implementation
 - The Circle and the PA Mid-Atlantic AIDS ETC divide the "chores" for maximum impact.



First Year Outcomes

- Perinatal transmission rate for 2003 was determined to be 10% after first set of chart reviews for babies born outside of The Circle program
 - Rate matched metropolitan areas in the continental US with significantly larger populations (New York City, Los Angeles, Dallas)
 - Provider frustration over repeated transmissions
 - Recommendations were launch a major effort to rise awareness of Perinatal prevention and to intervene at every possible point
- The Circle of Care headed a 'task force' to stop this trend
 - Comprehensive committee made up of local government, health officials, HIV/AIDS practitioners, Maternal Child Health advocates, pharmaceutical companies, and consumer advocates
 - **"NO MORE IN '04"** Eight months of intensive city-wide planning and modification of service delivery
 - Increased implementation of PHS Guidelines on Perinatal Prevention in all delivering institutions
 - Increased HIV testing in prenatal settings
 - Intensive push to ensure expedited or rapid HIV screening available in any labor and delivery hospital in the city of Philadelphia
 - Culminating conference on World AIDS Day to expand impact of perinatal interventions

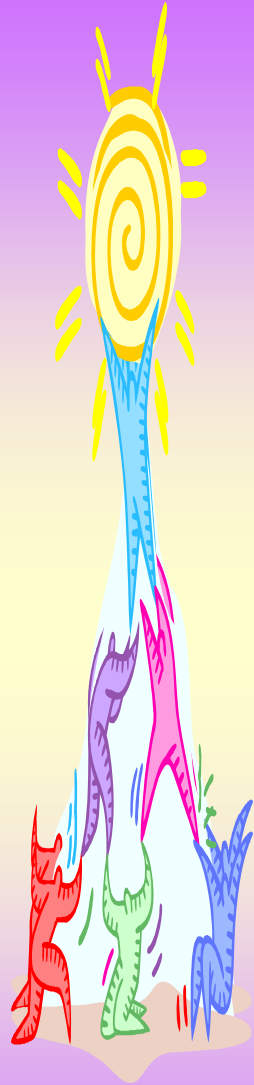
Panel Goals

- Over the last 4 years, as the Panel changed, goals were expanded to meet needs of the city of Philadelphia

- Integration of HIV/AIDS messages into the prenatal setting, into Maternal Child Health programs and services

- Methods of streamlining linkages to medical and supportive services for women diagnosed in the prenatal setting, during labor

- Modification of present perinatal prevention interventions to ensure that they are able to reach hardest-to-reach populations



Considerations

- Panel membership
 - Extending membership: Be alert to participation- too many non-medical providers could dilute the potency of group in the eyes of the physician community
- Assurance of a safe, neutral environment for participating panel members
 - Competitive atmosphere of Philadelphia's medical and academic communities
 - Emphasize the importance of activities, how outcomes will benefit the larger community, body of research
- Identification of methodology for case review
 - Institutional and patient confidentiality issues, HIPAA
 - State and local laws or regulations related to HIV information dissemination
- Site specific implementation of panel recommendations – Who does it?

Considerations for Implementation: Finances

- Actual annual cost of Perinatal Expert Panel
\$10,000
 - Facilitation of the Perinatal Expert Panel is a time intensive activity (Meets 4 times a year)
 - Dedicated staff person essential for success
 - Creates agendas
 - Compiles pertinent information for discussion and review
 - Maintains current contact listings
 - Coordinates meeting dates, times, and locations
 - Dissemination of meeting minutes, annual reports
- Cost saving activities
 - Donation of meeting space, duplication of meeting materials at participating medical institutions
 - Pharmaceutical support for meals, refreshments
 - Internet connections for discussion



Implications for Practice

The Perinatal Expert Panel represents an opportunity to engage key medical providers that can act as agents of change in their specialty and their medical institution using collegial support

Implications for Practice

- Regular meetings enable providers, administrators and local government to address pertinent topics and issues that affect successful prevention of mother to child transmission:
 - Lack or late entry into prenatal care services
 - Drug and alcohol abuse
 - Offering of HIV screening in prenatal settings during 1st and 3rd trimester
 - Availability of Rapid HIV screening in the labor and delivery/postpartum setting
 - Coordination of services for HIV+ women in medical settings, community based organizations, and supportive services programs

Results

- Increased professional interaction with medical institutions, health care providers, social service agencies throughout the city of Philadelphia
- Expanded emphasis on testing in both 1st and 3rd trimesters in family clinics and the prenatal setting
- Increased services integration such as family planning in HIV care settings;
- 100% of delivering hospitals in Philadelphia offer expedited or rapid HIV testing services in the labor and delivery unit
- Increase in the rate of referral and linkage to care for among panel members
 - Newly diagnosed women: prenatal setting, labor and delivery setting, HIV+ pregnant women lost to care
- Since the conception of Philadelphia's Perinatal Expert Panel, the rate of Philadelphia's MTCT has decreased 4%
 - As of April 23, 2007, zero transmissions in 2006.

Acknowledgments



Special thanks to:

- US Department of Health and Human Services
 - Health Resources and Services Administrations (HRSA)
 - Centers for Disease Control and Prevention (CDC)
- Philadelphia Department of Health, AIDS Activities Coordinating Office (AACO)
- Pennsylvania MidAtlantic AIDS Education and Training Center
- Members of Philadelphia's Perinatal Expert Panel
- Staff of The Circle of Care