
**UNITED STATES DEPARTMENT OF
COMMERCE
NEWS** WASHINGTON, D.C. 20230

**ECONOMICS
AND
STATISTICS
ADMINISTRATION**

**BUREAU OF THE
CENSUS**

Bureau of the Census
Steve Andrews or Kathy Menth
(301) 763-2502 or (301) 763-2575
M3-1(92)-07

For Release 8:30 A.M. EDT
August 26, 1992
CB92-206

ADVANCE REPORT ON DURABLE GOODS MANUFACTURERS' SHIPMENTS AND ORDERS
July 1992

(All figures in text below are in seasonally adjusted current dollars)

New Orders

New orders for manufactured durable goods in July decreased \$4.2 billion or 3.4 percent to \$119.0 billion, the Department of Commerce, Bureau of the Census reported today. The July decrease follows a 2.8 percent increase in June and 2.1 percent decrease in May. Excluding defense, new orders were down \$2.3 billion or 2.0 percent. New orders without transportation equipment increased \$0.6 billion or 0.7 percent.

Transportation equipment had the largest decrease, down \$4.8 billion or 15.2 percent to \$26.6 billion, with decreases in all categories; most of the decline was in aircraft and parts. Industrial machinery and equipment was down \$0.4 billion or 1.9 percent to \$20.9 billion. The decrease was slightly offset by increases in instruments and related products, electronic and other electrical equipment, and stone, clay and glass products.

Shipments

Shipments of durable goods in July decreased \$0.4 billion or 0.3 percent to \$125.5 billion, following a 2.9 percent increase in June. Excluding defense, shipments declined \$0.5 billion or 0.5 percent. Without transportation equipment, shipments increased \$0.1 billion or 0.1 percent. The largest decrease occurred in transportation equipment, down \$0.5 billion or 1.5 percent to \$32.3 billion, due to motor vehicles and parts. Industrial machinery and equipment was down \$0.4 billion or 1.8 percent to \$21.3 billion, with decreases in most categories. The largest increase occurred in electronic and other electrical equipment, up \$0.7 billion or 3.9 percent to \$18.0 billion.

Unfilled Orders

Unfilled orders for durable goods in July decreased \$6.4 billion or 1.4 percent to \$461.2 billion and are at the lowest level since \$459.2 billion in February 1989. This is the eleventh consecutive monthly decline. Excluding defense, unfilled orders were down \$3.5 billion or 1.1 percent. Without transportation equipment, unfilled orders were down \$0.7 billion or 0.4 percent. Transportation equipment had the largest decline, down \$5.7 billion or 2.2 percent to \$255.5 billion, with large decreases in aircraft and parts and shipbuilding and tanks. Transportation equipment has declined in ten of the last eleven months and is at the lowest level since \$251.8 billion in November 1989. Industrial machinery and equipment, down \$0.4 billion or 0.7 percent to \$51.5 billion, has declined in nine of the last ten months and is at the lowest level since \$51.2 billion in September 1987. Instruments and related products also declined.

Capital Goods Industries

New orders for nondefense capital goods in July decreased \$2.2 billion or 7.0 percent to \$28.8 billion. The July decrease follows a 1.7 percent increase in June. Shipments were down \$0.1 billion or 0.4 percent to \$32.7 billion, following a 7.3 percent increase in June. Unfilled orders, down \$3.9 billion or 1.7 percent to \$226.8 billion, have declined for four consecutive months and are at the lowest level since \$222.2 billion in February 1990. Excluding aircraft and parts, nondefense new orders decreased 1.0 percent, shipments were up 0.5 percent, and unfilled orders declined 0.9 percent.

New orders for defense were down \$1.9 billion or 26.4 percent to \$5.3 billion, primarily due to aircraft and parts. The July decrease follows a 22.3 percent increase in June. Shipments increased \$0.2 billion or 2.0 percent to \$8.2 billion, following a 2.8 percent increase in June. Unfilled orders declined \$2.9 billion or 2.2 percent to \$132.4 billion. Unfilled orders have declined in ten of the last eleven months and are at the lowest level since \$132.2 billion in July 1984.

This report presents advance information on two key business indicators: durable goods manufacturers' shipments and orders. Revised and more detailed estimates plus nondurable goods and inventory data will be published September 2, 1992. The advance report on durable goods for August is scheduled for September 25, 1992. This report is available on the day of issue through the Department of Commerce's online Economic Bulletin Board (N 8 1) 1992.

Table 1. DURABLE GOODS MANUFACTURERS' SHIPMENTS AND ORDERS
(Millions of dollars)

Item	Seasonally adjusted						Not seasonally adjusted ¹			
	Monthly			Percent Change			Monthly			Percent change July92/91
	July 1992 ²	June 1992 ¹	May 1992	June, July ²	May- June ¹	Apr.- May	July 1992 ²	June 1992 ¹	July 1991	
DURABLE GOODS										
Total :										
Shipments	125,481	125,855	122,344	-0.3	+2.9	-0.9	109,837	137,654	105,131	+4.5
New orders	119,032	123,194	119,808	-3.4	+2.8	-2.1	104,342	132,824	112,602	-7.3
Unfilled orders	461,228	467,677	470,338	-1.4	-0.6	-0.5	462,386	467,881	494,871	-6.6
Excluding defense :										
Shipments	117,265	117,798	114,504	-0.5	+2.9	-0.5	102,647	129,110	97,984	+4.8
New orders	113,760	116,034	113,954	-2.0	+1.8	-0.3	100,161	125,885	105,281	-4.9
Unfilled orders	328,797	332,302	334,066	-1.1	-0.5	-0.2	330,570	333,056	347,259	-4.8
With unfilled orders :										
Shipments	103,572	103,575	99,952	0.0	+3.6	-1.1	91,655	113,220	87,376	+4.9
New orders	97,123	100,914	97,416	-3.8	+3.6	-2.6	86,160	108,390	94,847	-9.2
Primary metals :										
Shipments	11,217	11,296	11,223	-0.7	+0.7	+1.0	10,446	11,818	10,003	+4.4
New orders	11,294	11,514	11,117	-1.9	+3.6	+0.5	10,606	11,816	10,844	-2.2
Unfilled orders	21,024	20,947	20,729	+0.4	+1.1	-0.5	21,405	21,245	22,373	-4.3
Industrial machinery and equipment :										
Shipments	21,254	21,643	20,622	-1.8	+5.0	0.0	18,370	25,167	17,445	+5.3
New orders	20,872	21,268	20,078	-1.9	+5.9	-0.3	17,946	24,600	17,616	+1.9
Unfilled orders	51,545	51,927	52,302	-0.7	-0.7	-1.0	51,457	51,881	54,857	-6.2
Electronic and other electrical equipment :										
Shipments	17,960	17,284	17,157	+3.9	+0.7	-0.2	15,979	18,640	14,785	+8.1
New orders	17,954	17,475	17,081	+2.7	+2.3	-0.5	16,099	18,351	15,270	+5.4
Unfilled orders	41,944	41,950	41,759	0.0	+0.5	-0.2	42,188	42,068	43,471	-3.0
Transportation equipment :										
Shipments	32,330	32,829	31,880	-1.5	+3.0	-1.9	25,528	35,714	24,935	+2.4
New orders	26,623	31,384	30,810	-15.2	+1.9	-6.6	19,582	33,515	29,266	-33.1
Unfilled orders	255,475	261,182	262,627	-2.2	-0.6	-0.4	254,798	260,744	275,359	-7.5
CAPITAL GOODS INDUSTRIES³										
Total :										
Shipments	40,937	40,907	38,443	+0.1	+6.4	-2.1	35,998	46,281	33,924	+6.1
New orders	34,083	38,139	36,323	-10.6	+5.0	-4.4	29,156	42,480	39,153	-25.5
Unfilled orders	359,219	366,073	368,841	-1.9	-0.8	-0.6	358,518	365,360	389,046	-7.8
Nondefense :										
Shipments	32,721	32,850	30,603	-0.4	+7.3	-0.9	28,808	37,737	26,777	+7.6
New orders	28,811	30,979	30,469	-7.0	+1.7	+1.9	24,975	35,541	31,832	-21.5
Unfilled orders	226,788	230,698	232,569	-1.7	-0.8	-0.1	226,702	230,535	241,434	-6.1
Excluding aircraft and parts :										
Shipments	26,319	26,196	24,955	+0.5	+5.0	+0.4	23,007	30,206	21,233	+8.4
New orders	25,650	25,911	24,683	-1.0	+5.0	+1.6	22,415	29,596	21,475	+4.4
Unfilled orders	73,771	74,440	74,725	-0.9	-0.4	-0.4	73,685	74,277	77,752	-5.2
Defense :										
Shipments	8,216	8,057	7,840	+2.0	+2.8	-6.5	7,190	8,544	7,147	+0.6
New orders	5,272	7,160	5,854	-26.4	+22.3	-27.7	4,181	6,939	7,321	-42.9
Unfilled orders	132,431	135,375	136,272	-2.2	-0.7	-1.4	131,816	134,825	147,612	-10.7

(NA) Not available. [†] Revised.

¹ Shipments and new orders are the totals for the period and are adjusted for trading-day and calendar-month variations; unfilled orders are as of the end of the period and are not adjusted for trading-day or calendar-month variations.

² Based on advance sample.

³ The Capital Goods Industries include Nondefense : ordnance and accessories, steam engines and turbines, internal combustion engines, construction mining and material handling equipment, metalworking machinery, special industry machinery, general industrial machinery, computer and office equipment, refrigeration, heating and service industry machinery, electrical transmission and distribution equipment, electrical industrial apparatus, communication equipment, complete aircraft, missiles, and space vehicles, aircraft missiles, and space vehicle engines and parts, ships and tank components, railroad equipment, and search and navigation equipment.

Defense capital goods include : ordnance, communication equipment, aircraft, missiles, space vehicles, and parts, ships, tanks and tank components, search and navigation equipment.

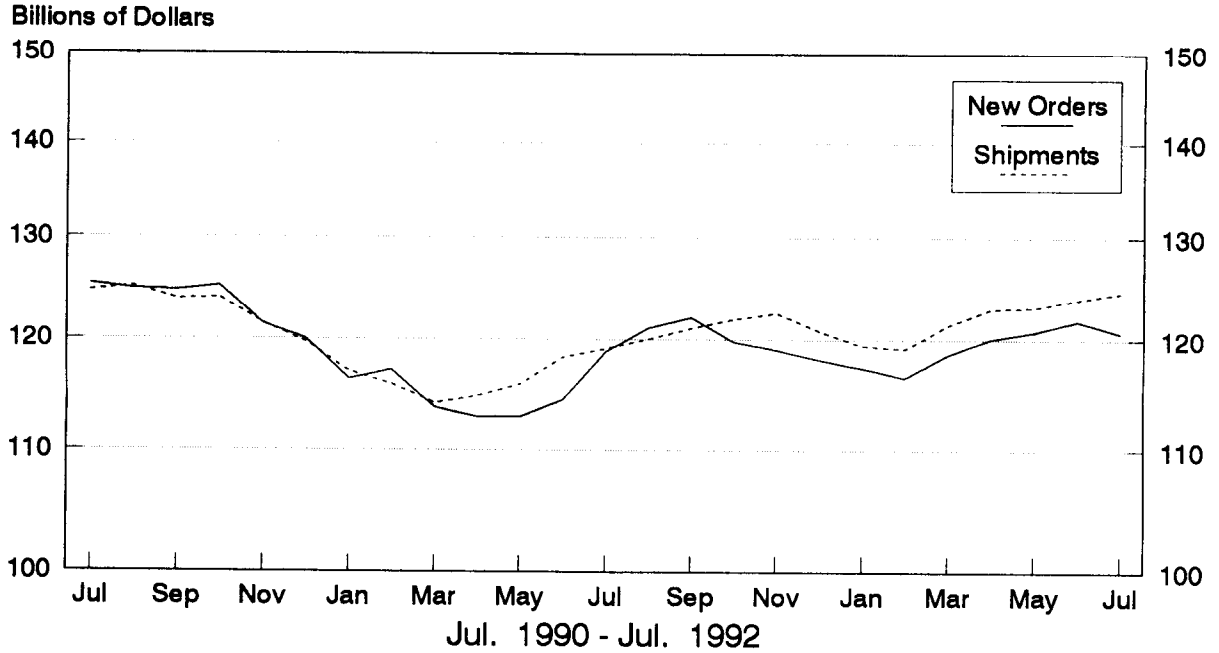
Table 2. AVERAGE REVISIONS TO PREVIOUSLY PUBLISHED MONTHLY PERCENT CHANGES
(Based on seasonally adjusted data)

Industry	Shipments			New Orders			Unfilled Orders		
	Year ago July 1991	July 1987-1991	July 1991- June 1992	Year ago July 1991	July 1987-1991	July 1991- June 1992	Year ago July 1991	July 1987-1991	July 1991- June 1992
Durable goods	0.2	0.2	0.2	1.0	0.7	0.8	0.2	0.2	0.1
Primary metals	0.7	1.0	0.3	0.2	1.3	0.8	0.2	0.4	0.3
Industrial machinery and equipment	0.1	0.8	0.7	0.3	1.6	1.0	0.0	0.5	0.2
Electronic and other electrical equipment	0.8	0.8	0.4	1.4	0.8	1.1	0.7	0.3	0.3
Transportation equipment	0.6	0.4	0.4	2.6	1.4	1.5	0.2	0.2	0.1
Nondefense capital goods	0.8	0.4	0.7	3.8	2.5	1.6	0.3	0.4	0.1
Defense capital goods	0.7	0.7	1.1	3.8	1.8	5.8	0.2	0.1	0.2

Note : The revisions are the differences between the month-to-month percent changes of the advance and final estimates. The monthly averages are the simple averages of the differences without

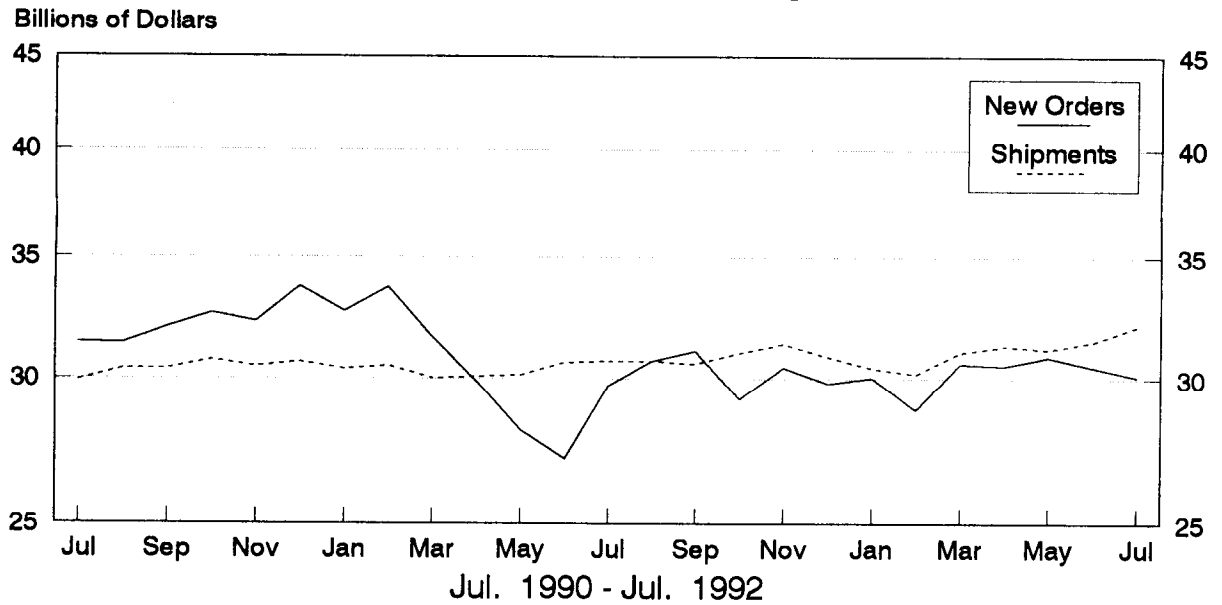
Total Durable Goods

New Orders and Shipments
Three Month Moving Averages



NonDefense Capital Goods

New Orders and Shipments
Three Month Moving Averages



Note: All Charts based on seasonally adjusted current dollars.