

DESCRIPTION: Cross Mountain is an oblong, flat topped land mass rising over 2200 feet above the floodplain of the Yampa and Little Snake rivers. The mountain is approximately 9 miles long by 4 miles wide and reaches 7804 feet in elevation. The Yampa River has cut a spectacular 800 to 1200 foot deep gorge through the mountain. Erosion has worked on the mountain's east and west flanks, exposing colorful rocky rims, side canyons, and rock outcrops.

The area offers opportunities for moderate to difficult hiking, backpacking, horseback riding, fishing, hunting, high risk rafting, and kayaking. Although there are no developed trails, day or overnight hikes through the side canyons and along the top are worth the effort. Hiking along the Yampa River in the canyon at low water involves considerable rock scrambling and getting wet. Commercial raft trips through the canyon are available. Cross Mountain is a Wilderness Study Area and all forms of motorized and mechanized vehicles are prohibited.

Mammals include elk, mule deer, antelope, coyote, occasional black bear, mountain lion, and fox. Golden eagle, turkey vulture, and American peregrin falcons nest are sometimes seen. Rattlesnakes are common. Pinyon-juniper



woodlands dominate the area with sagebrush communities scattered throughout. Pockets of aspen and mountain brush are found along the east flank of the mountain and there are a few ponderosa pine. Cultural sites and artifacts representing many years of human occupation are present. Please leave them as you found them. All sites and artifacts are protected by Federal laws.

ACCESS: The area is easily accessible from U. S. Highway 40 west of Maybell, Colorado. Turn on to the Deerlodge Park Road (provides access to the east end of Dinosaur National Monument) to the parking area at the mouth of Cross Mountain Canyon on the Yampa River. Additional access routes include Moffat Count Road #25 along the west side of Cross Mountain and Moffat County Road 10 along the north and east sides of Cross Mountain.

MAPS: BLM Canyon of Lodore and Rangely Color Quads (scale = 1:100,000). USGS Topographic Maps (scale = 1:24,000) - Cross Mountain Canyon, Peck Mesa, Lone Mountain and Twelvemile Mesa are available from USGS Branch of Distribution (map sales), P.O. Box 25286, Building 41, Denver Federal Center, Denver, Colorado 80225, phone (303) 236-7477.



Cross Mountain Wilderness Study Area

14,081 Acres

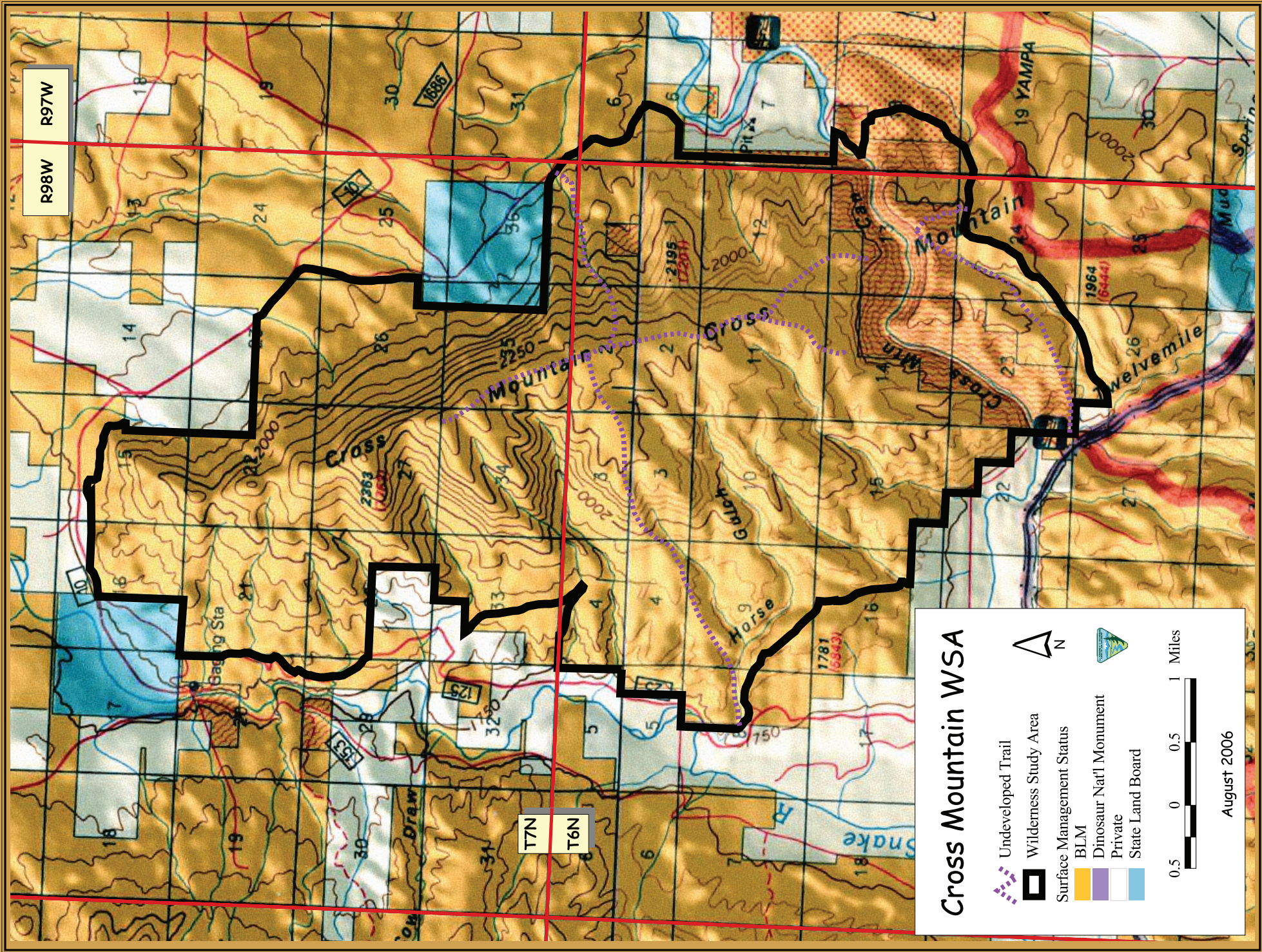


U.S. DEPARTMENT OF THE INTERIOR
BUREAU OF LAND MANAGEMENT







For more information contact the

BLM Little Snake Field Office, 455 Emerson
Street, Craig, Colorado 81625,
phone (970) 826-5000

<http://www.co.blm.gov/lra/lraindex.htm>



Cross Mountain WSA

-  Undeveloped Trail
-  Wilderness Study Area
- Surface Management Status**
-  BLM
-  Dinosaur Nat'l Monument
-  Private
-  State Land Board



August 2006