

STATE OF HAWAII 2005 FISHERY STATISTICS

Compiled by
Division of Aquatic Resources
and the
Western Pacific Fishery Information Network

July 2007

CONTENTS

	Page
Introduction	D.1
Data Collecting System	D.2
Data Processing System	D.3
Data Reporting System	D.3
Tables	D.8
Figures	D.34

LIST OF HAWAII SUMMARY TABLES

Table	Title	Page
D-1	2005 Reported Commercial Landings	D.8
D-2	January 2005 Reported Commercial Landings	D.10
D-3	February 2005 Reported Commercial Landings	D.12
D-4	March 2005 Reported Commercial Landings	D.14
D-5	April 2005 Reported Commercial Landings	D.16
D-6	May 2005 Reported Commercial Landings	D.18
D-7	June 2005 Reported Commercial Landings	D.20
D-8	July 2005 Reported Commercial Landings	D.22
D-9	August 2005 Reported Commercial Landings	D.24
D-10	September 2005 Reported Commercial Landings	D.26
D-11	October 2005 Reported Commercial Landings	D.28
D-12	November 2005 Reported Commercial Landings	D.30
D-13	December 2005 Reported Commercial Landings	D.32

LIST OF HAWAII FIGURES

Figure	Title	Page
D-1-1	2005 Fisheries Categories: Reported Commercial Landings of Pelagic, Bottom, Reef, and Other Fish	D.34
D-1-2	2005 Monthly Reported Commercial Landings of Tunas, PMUS, and BMUS	D.34
D-1-3	2005 Monthly Reported Commercial Landings of Wahoo, Mahimahi, and Billfish	D.35
D-1-4	2005 Monthly Reported Commercial Landings of Skipjack, Bigeye Tuna, and Swordfish	D.35
D-1-5	2005 Monthly Reported Commercial Landings of Albacore, Yellowfin, and Other Tunas	D.36
D-2-1	1948-2005 Average Monthly Reported Commercial Landings of Tunas, PMUS, and BMUS	D.36
D-2-2	1948-2005 Average Monthly Reported Commercial Landings of Wahoo and Mahimahi	D.37
D-2-3	1948-2005 Average Monthly Reported Commercial Landings of Striped and Blue Marlin	D.37
D-2-4	1948-2005 Average Monthly Reported Commercial Landings of Skipjack Tuna, Bigeye Tuna, and Swordfish	D.38
D-2-5	1948-2005 Average Monthly Reported Commercial Landings of Opakapaka, Onaga, and Uku	D.38
D-2-6	1948-2005 Average Monthly Reported Commercial Landings of Albacore, Yellowfin, and Other Tuna	D.39
D-2-7	1948-2005 Average Monthly Reported Commercial Landings of Bigeye and Mackerel Scad	D.39
D-2-8	1948-2005 Average Monthly Reported Commercial Landings of Spiny Lobster and Saltwater Shrimp	D.40
D-3-1	1979-2005 Annual Reported Commercial Landings of Pelagic, Bottom, Reef, and Other Fish	D.40
D-3-2	1948-2005 Annual Reported Commercial Landings (Pounds and Dollars)	D.41
D-3-3	1948-2005 Annual Reported Commercial Landings of Tunas, PMUS, and BMUS	D.41
D-3-4	1948-2005 Annual Reported Commercial Landings of Wahoo and Mahimahi	D.42
D-3-5	1948-2005 Annual Reported Commercial Landings of Albacore, Yellowfin, and Other Tunas	D.42
D-3-6	1948-2005 Annual Reported Commercial Landings of Skipjack, Bigeye Tuna, and Swordfish	D.43

LIST OF HAWAII FIGURES (cont.)

Figure	Title	Page
D-3-7	1948-2005 Annual Reported Commercial Landings of Striped and Blue Marlin	D.43
D-3-8	1948-2005 Annual Reported Commercial Landings of Opakapaka, Onaga, and Uku	D.44
D-3-9	1948-2005 Annual Reported Commercial Landings of Bigeye and Mackerel Scad	D.44
D-3-10	1948-2005 Annual Reported Commercial Landings of Spiny Lobster and Saltwater Shrimp	D.45
D-4-1	1986-2005 Monthly Reported Commercial Landings of Yellowfin Tuna	D.45
D-4-2	1986-2005 Monthly Reported Commercial Landings of Skipjack Tuna	D.46
D-4-3	1986-2005 Monthly Reported Commercial Landings of Bigeye Tuna	D.46
D-4-4	1986-2005 Monthly Reported Commercial Landings of Moonfish (Opah)	D.47
D-4-5	1986-2005 Monthly Reported Commercial Landings of Bigeye Scad	D.47
D-4-6	1986-2005 Monthly Reported Commercial Landings of Mahimahi	D.48
D-4-7	1986-2005 Monthly Reported Commercial Landings of Striped Marlin	D.48
D-4-8	1986-2005 Monthly Reported Commercial Landings of Wahoo	D.49
D-4-9	1986-2005 Monthly Reported Commercial Landings of Onaga	D.49
D-4-10	1986-2005 Monthly Reported Commercial Landings of Blue Marlin	D.50
D-4-11	1986-2005 Monthly Reported Commercial Landings of Swordfish	D.50
D-4-12	1986-2005 Monthly Reported Commercial Landings of Albacore Tuna	D.51
D-4-13	1986-2005 Monthly Reported Commercial Landings of Oilfish	D.51
D-4-14	1986-2005 Monthly Reported Commercial Landings of Pomfret	D.52

STATE OF HAWAII 2005 FISHERY STATISTICS

INTRODUCTION

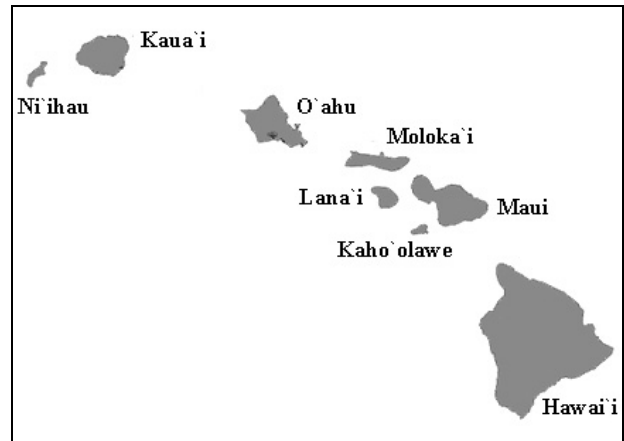
The Hawaiian Archipelago stretches northwestward over 1500 miles.

Location: 19° N latitude, 155° W longitude to about 28° N latitude and 178° W longitude

Islands: Hawaii, Maui, Lanai, Molokai, Oahu, Kauai, and Niihau (comprise over 99% of the total land area)

Population: 1,286,000 (*The State of Hawaii Data Book, 2006 Update*)

Commercial Catch Breakdown (lbs):
84% on Oahu, 13% on Hawaii (Big Island), 2% on Maui, and 1% or less on other islands



Hawaiian Islands; copied and modified from:
http://satftp.soest.hawaii.edu/space/hawaii/maps/All_Islands_map.710x509.gif; SOEST
Satlab Server

The fisheries of the State of Hawaii are quite diverse; they vary from shore-based algae harvesting by hand to large-vessel fisheries such as longlining and lobster fishing. There are several major fisheries: tuna fishing through various methods, lobster trapping, hook-and-line bottomfishing for the grouper-snapper-jack complex, net fishing for species such as the bigeye scad, and trolling for such pelagic species as marlin, wahoo, and mahimahi.

In 2001, prohibitions were placed on landing shark fins without their associated carcasses and on making shallow-sets with longline gear to target swordfish. Shark and swordfish catches dropped dramatically, and longline effort significantly shifted from swordfish to tunas.

In 2004, the swordfish fishery was reopened due to new technology that reduced sea turtle bycatch. With the reopening, new regulations were implemented that required fishing vessels to have a shallow-set certificate for each deployment of shallow-set longline fishing gear. A limited number of certificates were made available for purchase each year. In addition, the swordfish fishery would close for the remainder of the year if the number of allowable interactions with leatherback (16) or loggerhead (17) sea turtles was reached.

Commercial fishing (i.e., selling catches or providing charter fishing services) in Hawaii requires purchasing a commercial marine fishing license. In 2005, there were 4,242 licensed commercial fishers. The summary 2005 data were created from a combination of Hawaii Division of Aquatic Resources' (HDAR) fishers and dealer reporting forms processed

through their Dealer Reporting System (DRS) and Fisherman Reporting System (FRS) as well as fishery reporting forms (including federal longline logbooks). It is believed to represent over 95% of what may eventually be submitted and processed.

DATA COLLECTING SYSTEM

Previously, data processed in the Reported Landings tables and charts presented in this section were collected from various Fishermen's Reporting System (FRS) Forms. Beginning in October 2002, HDAR implemented several new FRS forms that no longer required sales information reporting as a trade-off for requiring improved catch, effort, and bycatch statistics. The FRS was modified to accommodate these new forms.

The Dealer Reporting System (DRS) was computerized in 2000 and is now a major source of sales data used to create the tables and charts. Data from the NOAA Fisheries Longline Logbook Program are integrated with DRS and FRS data to create the “best available” summaries presented in this report.

Dealers are required by State law to submit a Commercial Marine Dealer's Report for each month that they are in the business of purchasing marine life. Information collected includes

- Dealer Name
- Dealer Number
- Month and Year
- Date
- First and Last Name from Whom Fish was Bought
- Fisherman’s Commercial Marine License Number
- Species Bought
- Pounds Bought
- Pieces Bought
- Amount Paid
- Condition

Likewise, all holders of a Commercial Marine License (CML) are required by state law to report on their fishing activity. The majority of commercial fishers use the “Monthly Fishing Report,” a replacement for the old General Fish Catch Report (C-3 Form). This form collects data on fishing catch and effort for each day, method, and area fished, and it is processed in the FRS. Information collected includes

- Fisherman’s Name and Commercial License Number
- Boat’s Name and its Registration/USCG Number
- Month and Year Fished
- Day Fished
- Charter Trip (y/n)
- Buoy or Area Fished
- Fishing Method
- Hours Fished per Method/Area
- Number of Net Sets
- Number of Fishing Lines, Traps, or Net Length
- Port of Landing
- Species Name
- Number Landed
- Pounds Landed
- Number Lost
- Number Released

D.3

Other FRS data collection forms include the Net, Trap and Dive Activity Report, Tuna Handline Trip Report, Deep Sea Handline Trip Report, Aku Boat Report, NWHI Bottomfish Trip Sales Report, and NWHI Bottomfish Trip Daily Log. Commercial collectors of tropical marine fish are required to have an aquarium permit in addition to their commercial marine license, and they are required to report monthly on the C-6 Aquarium Fish Catch Report. Aquarium fish catches, however, are not included in this report's statistics.

The assumption is made that the data submitted by fishers are complete and accurate. The HDAR continually attempts to improve the quality of data and decrease the time delays in receiving and processing the data.

No real measurement is available for what percent of the total commercial catch is actually reported to HDAR via fishers and dealers, but estimates have ranged from about 10% to more than 99%, depending on the species and fishery. The overall percent coverage was probably over 80% for all commercial fisheries combined in 2005.

DATA PROCESSING SYSTEM

When HDAR receives various data reporting forms, staff code and edit the data before keypunching. Forms that fail initial editing are returned for correction and resubmission, or minor problems may be cleared up over the telephone. Delinquency notices are sent to those who fall more than a few months behind in their reporting. Once the data are keypunched, HDAR staff use computer-generated reports to verify and correct errors in the database. When the database is considered to be reasonably complete and error free, it is ready for use in producing various summary catch reports.

DATA REPORTING SYSTEM

More than 150 marine species and species groups are recorded in HDAR's monthly landings reports, many of which are insignificant in the total catch. To help reduce this document's size and improve the usability of the tables, WPacFIN staff combined some of the less important species, reorganized the order of presentation, created a new species coding system, and translated all records in the database. The new coding system has 100 species and species groups based on flexible ecological and phylogenetic criteria. All of the commercially important pelagic and bottomfish species or unique species groups have individual codes and are reported separately. Marine pond catches are included in the species totals, but make up less than 0.4% of the total landings for each year.

The monthly and annual reports included in this document contain the common name, pounds caught, pounds sold, value rounded to the nearest dollar, and the average price per pound for each species. Pounds caught data is from the Longline Logbooks, Dealer Reports, and Fisherman Catch Reports; the pounds sold, value and price/pound data is from Dealer Reports. Each monthly report contains a subtotal for the sum of all species for that month.

D.4

Several types of graphs are also included. Please note that some of the charts in this volume are new or modified from earlier volumes. More up-to-date tables and charts are available at the WPacFIN Website at <<http://www.pifsc.noaa.gov/wpacfin>>.

The following species, species groups, and abbreviations are used in the tables and graphs of Hawaii's fishery statistics:

Note: Many of the species included in this report have been recategorized over the years. For example, the Magnuson Fishery Conservation and Management Act of 1976 was amended in 1992 to include tunas in the Pelagic Management Unit Species (PMUS) category. However, this FSWP volume will maintain the original species categorizations from previous volumes for comparative purposes. As such, tunas are kept in a separate category.

I. Pelagic Management Unit Species (PMUS)

Mahimahi (dolphin)	Wahoo
Blue marlin	Black marlin
Striped marlin	Shortnose spearfish
Sailfish	Broadbill swordfish
Sharks	Billfish (misc)

II. Bottomfish Management Unit Species (BMUS)

Deep water jacks (misc)	Amberjack
Pig-lipped ulua (jack)	White ulua
Hawaiian grouper	Blue-lined snapper
Ehu (red snapper)	Gindai (flower snapper)
Kalekale (pink snapper)	Lehi (silverjaw snapper)
Onaga (long-tailed snapper)	Opakapaka (pink snapper)
Uku (gray snapper)	Snappers

III. Billfish

Billfish	Blue marlin
Black marlin	Striped marlin
Shortnose spearfish	Sailfish
Broadbill swordfish	

IV. Tunas

Other tunas	Skipjack tuna
Yellowfin tuna	Albacore
Bigeye tuna	

D.5

V. Other Tunas

Miscellaneous tunas	Bluefin tuna
Frigate tuna	Kawakawa

VI. Fisheries Categories

A. Pelagic Species

All PMUS and tuna species including the following:

Rainbow runner	Barracuda
Japanese mackerel	Frigate tuna
Ocean sunfish	Ocean moonfish

B. Bottomfish

All BMUS plus the following:

Blue crevally	Dobe ulua
Paapaa ulua	Blue spot grouper
Porgy	

C. Reef Fish

Reef jacks (misc)	Squirrelfish
Trumpetfish	Scorpionfish
Mountain bass	Bigeyes
Cardinalfish	Goatfish
Rudderfish	Butterflyfish
Damselfish	Hawkfish
Tipapia	Wrasse
Parrotfish	Gobies
Surgeonfish-tangs	Flounders
Triggerfish	Filefish
Pufferfish	

D. Other

Miscellaneous	Rays
Eels	Bigeye scad (akule)
Mackerel scad (opelu)	Leatherback
Anchovy	Ten pounder
Bonefish	Herring-sardine
Milkfish	Flyingfish
Needlefish	Halfbeaks
Threadfin	Mullet
Pomfret	Snake mackerel
Freshwater fish	Spiny lobster
Slipper lobster	Crabs
Shrimp (freshwater)	Shrimp (saltwater)
Octopus	Squid
Limpets (saltwater)	Limpets (freshwater)
Clams	Stoney corals
Precious corals	Sea urchins
Sea cucumbers	Sea turtles
Algae	

D.7

This page is intentionally left blank.

D.8

Table D-1
2005 Annual Reported Commercial Landings

Species	Caught	Sold	Value	Price/Lb.
Miscellaneous	3,330	1,769	\$3,702	\$ 2.09
Sharks	441,007	275,455	\$101,519	\$ 0.37
Rays	44	0	\$0	\$ 0.00
Eels	694	680	\$714	\$ 1.05
Armorhead	6	0	\$0	\$ 0.00
Bigeye scad (akule)	656,434	247,637	\$492,812	\$ 1.99
Mackerel scad	232,714	153,808	\$341,824	\$ 2.22
Leatherjacket	518	351	\$460	\$ 1.31
Ten pounder	701	640	\$652	\$ 1.02
Bonefish	3,963	3,436	\$3,554	\$ 1.03
Milkfish	2,949	2,762	\$3,409	\$ 1.23
Needlefish	825	304	\$464	\$ 1.53
Threadfin	437	349	\$1,963	\$ 5.63
Mullet	8,945	8,753	\$30,423	\$ 3.48
Pomfret	676,741	646,123	\$1,440,166	\$ 2.23
Oilfish	388,568	385,809	\$704,254	\$ 1.83
Jacks (misc)	1,587	878	\$1,948	\$ 2.22
Amberjack	7,674	231	\$173	\$ 0.75
Sasa ulua	1,187	780	\$1,367	\$ 1.75
Pig-lipped ulua	14,959	13,241	\$34,965	\$ 2.64
Dobe ulua	131	131	\$427	\$ 3.27
Papa ulua	5,498	3,176	\$9,303	\$ 2.93
White ulua	15,058	11,547	\$22,293	\$ 1.93
Black ulua	1,783	1,364	\$2,438	\$ 1.79
Blue trevally	9,676	3,629	\$7,279	\$ 2.01
Hawaiian grouper	50,800	45,479	\$208,283	\$ 4.58
Blue spot grouper	457	156	\$355	\$ 2.27
Snappers	2,049	1,731	\$5,347	\$ 3.09
Yellowtail kali	44	0	\$0	\$ 0.00
Blue lined snapper	45,485	41,091	\$46,531	\$ 1.13
Ehu (red snapper)	33,909	28,063	\$130,921	\$ 4.67
Gindai (flower snapper)	7,462	6,128	\$21,192	\$ 3.46
Golden kalekale	9,594	8,129	\$30,803	\$ 3.79
Lehi (silverjaw)	6,940	6,415	\$21,695	\$ 3.38
Onaga (red snapper)	111,122	95,715	\$646,995	\$ 6.76
Opakapaka (pink snapper)	111,141	101,754	\$606,263	\$ 5.96
Uku (gray snapper)	155,167	145,233	\$483,929	\$ 3.33
Snake mackerel	4	0	\$0	\$ 0.00
Porgy	1,989	1,776	\$4,053	\$ 2.28
Other reef fish	65	3	\$10	\$ 3.00
Reef jacks	55	55	\$177	\$ 3.24
Squirrelfish	37,928	32,986	\$115,562	\$ 3.50
Trumpetfish	43	31	\$43	\$ 1.40

Table D-1
2005 Annual Reported Commercial Landings (Cont.)

Species	Caught	Sold	Value	Price/Lb.
Scorpionfish	3,255	2,599	\$11,422	\$ 4.40
Mountain bass	2,238	1,355	\$4,611	\$ 3.40
Bigeyes	6,408	5,688	\$15,227	\$ 2.68
Goatfish	42,034	35,688	\$98,748	\$ 2.77
Rudderfish	20,417	19,436	\$19,899	\$ 1.02
Damselfish	2,223	1,326	\$3,482	\$ 2.63
Hawkfish	460	416	\$1,031	\$ 2.48
Tilapia	2,520	1,214	\$1,803	\$ 1.49
Wrasse	4,175	3,735	\$14,735	\$ 3.94
Parrotfish	33,111	30,032	\$89,446	\$ 2.98
Surgeon/tangs	94,495	82,250	\$119,655	\$ 1.45
Flounders	278	272	\$573	\$ 2.11
Filefish	1,416	1,134	\$1,698	\$ 1.50
Pufferfish	8	3	\$2	\$ 0.50
Other pelagic	2,756	123	\$12	\$ 0.10
Moonfish (opah)	1,099,729	1,086,076	\$1,897,337	\$ 1.75
Rainbow runner	5,433	4,265	\$6,726	\$ 1.58
Mahimahi (dolphin)	1,591,116	1,438,622	\$3,594,541	\$ 2.50
Barracudas	36,829	33,878	\$25,183	\$ 0.74
Wahoo	889,110	817,025	\$2,250,054	\$ 2.75
Tunas (misc)	27,335	8,726	\$29,986	\$ 3.44
Skipjack tuna	1,173,670	964,328	\$1,131,938	\$ 1.17
Yellowfin tuna	3,249,497	3,202,557	\$7,362,751	\$ 2.30
Albacore	1,033,073	1,007,931	\$1,506,812	\$ 1.50
Bigeye tuna	11,788,857	10,934,358	\$36,059,029	\$ 3.30
Kawakawa	7,977	3,342	\$4,845	\$ 1.45
Other billfish	8,986	315	\$318	\$ 1.01
Broadbill swordfish	3,599,151	3,445,598	\$7,778,160	\$ 2.26
Blue marlin	1,104,956	930,238	\$972,110	\$ 1.05
Black marlin	4,431	2,344	\$2,740	\$ 1.17
Striped marlin	1,213,824	1,193,272	\$1,536,412	\$ 1.29
Shortnose spearfish	493,220	467,748	\$420,144	\$ 0.90
Sailfish	20,831	7,420	\$8,480	\$ 1.14
Spiny lobster	11,864	10,091	\$110,927	\$10.99
Slipper lobster	57	12	\$101	\$ 8.36
Crabs	29,704	8,951	\$36,249	\$ 4.05
Shrimp (saltwater)	114,789	84	\$756	\$ 9.00
Octopus	24,244	21,198	\$63,724	\$ 3.01
Squid	1,561	1,444	\$2,669	\$ 1.85
Limpets (saltwater)	8,213	4,999	\$44,764	\$ 8.96
Invertebrates	11,668	7,268	\$216,340	\$29.77
Algae	10,399	7,209	\$39,840	\$ 5.53
TOTAL	30,825,996	28,072,163	\$71,013,543	\$ 2.53

Table D-2
January 2005 Reported Commercial Landings

Species	Caught	Sold	Value	Price/Lb.
Miscellaneous	44	44	\$42	\$ 0.96
Sharks	29,100	15,345	\$6,449	\$ 0.42
Eels	25	25	\$25	\$ 1.00
Bigeye scad (akule)	53,460	14,705	\$31,988	\$ 2.18
Mackerel scad	7,508	4,486	\$9,288	\$ 2.07
Leatherjacket	20	20	\$25	\$ 1.24
Ten pounder	13	13	\$13	\$ 1.00
Bonfish	45	42	\$68	\$ 1.60
Milkfish	88	88	\$108	\$ 1.24
Needlefish	161	6	\$3	\$ 0.50
Threadfin	21	21	\$119	\$ 5.58
Mullet	110	110	\$523	\$ 4.75
Pomfret	43,224	41,537	\$108,618	\$ 2.62
Oilfish	33,908	33,908	\$62,248	\$ 1.84
Jacks (misc)	119	44	\$121	\$ 2.78
Amberjack	573	0	\$0	\$ 0.00
Sasa ulua	12	3	\$6	\$ 2.07
Pig-lipped ulua	878	842	\$2,452	\$ 2.91
Papa ulua	671	321	\$740	\$ 2.31
White ulua	647	647	\$1,290	\$ 1.99
Black ulua	12	0	\$0	\$ 0.00
Blue trevally	255	255	\$696	\$ 2.73
Hawaiian grouper	3,282	2,839	\$13,531	\$ 4.77
Blue spot grouper	8	8	\$20	\$ 2.50
Snappers	210	75	\$198	\$ 2.65
Blue lined snapper	3,273	2,478	\$2,379	\$ 0.96
Ehu (red snapper)	3,106	2,621	\$11,855	\$ 4.52
Gindai (flower snapper)	249	202	\$752	\$ 3.73
Golden kalekale	1,387	1,371	\$5,461	\$ 3.98
Lehi (silverjaw)	830	830	\$3,115	\$ 3.75
Onaga (red snapper)	11,612	11,169	\$76,836	\$ 6.88
Opakapaka (pink snapper)	17,968	17,968	\$112,103	\$ 6.24
Uku (gray snapper)	5,539	5,434	\$23,367	\$ 4.30
Porgy	69	69	\$131	\$ 1.90
Squirrelfish	1,230	1,230	\$4,067	\$ 3.31
Trumpetfish	8	5	\$7	\$ 1.50
Scorpionfish	249	249	\$1,019	\$ 4.10
Mountain bass	67	52	\$174	\$ 3.37
Bigeyes	624	624	\$1,470	\$ 2.35
Goatfish	5,474	3,687	\$9,504	\$ 2.58
Rudderfish	302	298	\$369	\$ 1.24
Damselfish	42	42	\$113	\$ 2.71

Table D-2
January 2005 Reported Commercial Landings (Cont.)

Species	Caught	Sold	Value	Price/Lb.
Hawkfish	12	12	\$31	\$ 2.65
Wrasse	301	301	\$1,065	\$ 3.54
Parrotfish	1,524	1,494	\$4,064	\$ 2.72
Surgeon/tangs	5,517	4,611	\$7,138	\$ 1.55
Filefish	230	36	\$36	\$ 1.00
Other pelagic	247	114	\$11	\$ 0.10
Moonfish (opah)	42,658	42,580	\$105,089	\$ 2.47
Rainbow runner	343	169	\$267	\$ 1.58
Mahimahi (dolphin)	109,176	107,575	\$242,511	\$ 2.25
Barracudas	1,900	680	\$668	\$ 0.98
Wahoo	62,220	61,218	\$176,363	\$ 2.88
Tunas (misc)	732	0	\$0	\$ 0.00
Skipjack tuna	74,509	24,368	\$19,069	\$ 0.78
Yellowfin tuna	448,157	448,157	\$916,042	\$ 2.04
Albacore	58,079	56,813	\$96,419	\$ 1.70
Bigeye tuna	1,125,864	962,146	\$2,333,333	\$ 2.43
Kawakawa	419	208	\$433	\$ 2.09
Other billfish	1,492	0	\$0	\$ 0.00
Broadbill swordfish	171,536	166,734	\$539,387	\$ 3.24
Blue marlin	56,443	24,929	\$26,074	\$ 1.05
Black marlin	180	180	\$268	\$ 1.49
Striped marlin	122,825	122,825	\$143,013	\$ 1.16
Shortnose spearfish	90,016	90,016	\$47,291	\$ 0.53
Sailfish	2,178	631	\$724	\$ 1.15
Spiny lobster	1,324	1,051	\$11,814	\$11.24
Crabs	2,599	932	\$3,478	\$ 3.73
Shrimp (saltwater)	2,000	0	\$0	\$ 0.00
Octopus	805	601	\$1,746	\$ 2.91
Squid	19	19	\$46	\$ 2.50
Limpets (saltwater)	1,221	465	\$2,459	\$ 5.29
Invertebrates	200	0	\$0	\$ 0.00
Algae	788	643	\$3,193	\$ 4.96
TOTAL	2,611,932	2,283,213	\$5,173,326	\$ 2.27

Table D-3
February 2005 Reported Commercial Landings

Species	Caught	Sold	Value	Price/Lb.
Miscellaneous	64	64	\$155	\$ 2.43
Sharks	30,814	24,607	\$12,672	\$ 0.52
Eels	183	183	\$183	\$ 1.00
Bigeye scad (akule)	53,273	19,877	\$42,349	\$ 2.13
Mackerel scad	6,191	6,148	\$12,757	\$ 2.07
Leatherjacket	16	16	\$21	\$ 1.37
Ten pounder	91	91	\$91	\$ 1.00
Bonfish	387	352	\$375	\$ 1.07
Milkfish	478	478	\$595	\$ 1.25
Needlefish	56	39	\$55	\$ 1.43
Threadfin	34	34	\$183	\$ 5.46
Mullet	113	113	\$529	\$ 4.70
Pomfret	65,566	58,502	\$133,030	\$ 2.27
Oilfish	47,344	45,535	\$74,858	\$ 1.64
Jacks (misc)	22	6	\$15	\$ 2.75
Amberjack	139	40	\$20	\$ 0.50
Sasa ulua	20	20	\$50	\$ 2.50
Pig-lipped ulua	2,310	2,027	\$4,945	\$ 2.44
Dobe ulua	64	64	\$225	\$ 3.50
Papa ulua	354	154	\$454	\$ 2.95
White ulua	2,225	452	\$609	\$ 1.35
Black ulua	183	113	\$183	\$ 1.62
Blue trevally	140	33	\$85	\$ 2.56
Hawaiian grouper	3,713	3,645	\$15,691	\$ 4.30
Blue spot grouper	30	3	\$6	\$ 2.02
Snappers	37	18	\$47	\$ 2.66
Blue lined snapper	2,791	1,549	\$1,247	\$ 0.81
Ehu (red snapper)	1,907	1,907	\$8,744	\$ 4.59
Gindai (flower snapper)	463	463	\$1,604	\$ 3.46
Golden kalekale	658	658	\$2,353	\$ 3.58
Lehi (silverjaw)	419	419	\$1,372	\$ 3.27
Onaga (red snapper)	9,068	9,068	\$56,422	\$ 6.22
Opakapaka (pink snapper)	9,573	9,573	\$52,235	\$ 5.46
Uku (gray snapper)	9,074	8,656	\$27,438	\$ 3.17
Porgy	145	61	\$77	\$ 1.28
Reef jacks	10	10	\$29	\$ 3.00
Squirrelfish	1,213	980	\$3,203	\$ 3.27
Scorpionfish	170	170	\$814	\$ 4.79
Mountain bass	156	41	\$100	\$ 2.43
Bigeyes	481	481	\$1,385	\$ 2.88
Goatfish	2,261	1,883	\$4,971	\$ 2.64
Rudderfish	1,460	1,460	\$1,504	\$ 1.03
Damselfish	21	21	\$58	\$ 2.80
Hawkfish	14	2	\$3	\$ 2.25

Table D-3
February 2005 Reported Commercial Landings (Cont.)

Species	Caught	Sold	Value	Price/Lb.
Tilapia	80	80	\$119	\$ 1.50
Wrasse	264	264	\$1,373	\$ 5.19
Parrotfish	1,770	1,242	\$3,513	\$ 2.83
Surgeon/tangs	4,870	3,805	\$5,961	\$ 1.57
Filefish	74	74	\$74	\$ 1.00
Other pelagic	1,836	9	\$1	\$ 0.10
Moonfish (opah)	56,731	54,447	\$129,076	\$ 2.37
Rainbow runner	105	99	\$125	\$ 1.26
Mahimahi (dolphin)	165,408	143,134	\$274,043	\$ 1.91
Barracudas	2,366	1,724	\$1,358	\$ 0.79
Wahoo	61,211	55,375	\$151,785	\$ 2.74
Tunas (misc)	385	0	\$0	\$ 0.00
Skipjack tuna	73,307	36,379	\$42,032	\$ 1.16
Yellowfin tuna	344,639	324,225	\$709,568	\$ 2.19
Albacore	95,135	80,739	\$123,911	\$ 1.53
Bigeye tuna	1,185,657	984,447	\$2,866,454	\$ 2.91
Kawakawa	450	150	\$227	\$ 1.51
Other billfish	331	0	\$0	\$ 0.00
Broadbill swordfish	217,834	135,566	\$452,418	\$ 3.34
Blue marlin	61,072	49,367	\$50,976	\$ 1.03
Black marlin	310	258	\$416	\$ 1.62
Striped marlin	105,638	101,650	\$130,113	\$ 1.28
Shortnose spearfish	71,842	65,757	\$47,664	\$ 0.72
Sailfish	2,107	453	\$479	\$ 1.06
Spiny lobster	1,269	882	\$8,488	\$ 9.63
Slipper lobster	3	3	\$23	\$ 9.00
Crabs	1,586	366	\$1,307	\$ 3.57
Shrimp (saltwater)	203	0	\$0	\$ 0.00
Octopus	1,211	949	\$2,834	\$ 2.99
Limpets (saltwater)	1,281	270	\$1,220	\$ 4.52
Invertebrates	800	0	\$0	\$ 0.00
Algae	1,248	735	\$4,336	\$ 5.90
TOTAL	2,714,750	2,242,457	\$5,473,634	\$ 2.44

Table D-4
March 2005 Reported Commercial Landings

Species	Caught	Sold	Value	Price/Lb.
Miscellaneous	16	16	\$32	\$ 2.03
Sharks	37,861	35,249	\$11,020	\$ 0.31
Rays	9	0	\$0	\$ 0.00
Eels	107	107	\$107	\$ 1.00
Armorhead	6	0	\$0	\$ 0.00
Bigeye scad (akule)	72,365	31,096	\$51,108	\$ 1.64
Mackerel scad	12,181	8,078	\$17,248	\$ 2.14
Leatherjacket	28	28	\$38	\$ 1.39
Ten pounder	117	117	\$117	\$ 1.00
Bonefish	142	142	\$182	\$ 1.28
Milkfish	150	150	\$187	\$ 1.25
Needlefish	37	29	\$50	\$ 1.76
Threadfin	17	17	\$101	\$ 6.12
Mullet	90	90	\$428	\$ 4.75
Pomfret	58,111	58,111	\$132,868	\$ 2.29
Oilfish	47,286	47,286	\$63,927	\$ 1.35
Jacks (misc)	226	226	\$324	\$ 1.43
Amberjack	612	4	\$2	\$ 0.50
Sasa ulua	3	0	\$0	\$ 0.00
Pig-lipped ulua	3,258	3,102	\$6,984	\$ 2.25
Dobe ulua	15	15	\$51	\$ 3.50
Papa ulua	520	292	\$663	\$ 2.27
White ulua	864	728	\$1,322	\$ 1.82
Black ulua	93	48	\$61	\$ 1.29
Blue trevally	188	188	\$463	\$ 2.47
Hawaiian grouper	3,706	3,606	\$20,426	\$ 5.67
Blue spot grouper	22	4	\$8	\$ 2.00
Snappers	156	156	\$550	\$ 3.54
Yellowtail kali	4	0	\$0	\$ 0.00
Blue lined snapper	2,764	2,764	\$2,986	\$ 1.08
Ehu (red snapper)	3,115	2,847	\$14,207	\$ 4.99
Gindai (flower snapper)	545	481	\$1,699	\$ 3.53
Golden kalekale	930	896	\$3,592	\$ 4.01
Lehi (silverjaw)	790	790	\$2,673	\$ 3.39
Onaga (red snapper)	16,042	14,993	\$97,792	\$ 6.52
Opakapaka (pink snapper)	16,718	16,493	\$101,725	\$ 6.17
Uku (gray snapper)	7,765	7,345	\$28,970	\$ 3.94
Porgy	114	114	\$199	\$ 1.76
Squirrelfish	1,732	1,732	\$5,802	\$ 3.35
Trumpetfish	7	7	\$10	\$ 1.50
Scorpionfish	315	302	\$1,658	\$ 5.49
Mountain bass	221	104	\$387	\$ 3.73
Bigeyes	606	606	\$1,451	\$ 2.40
Goatfish	4,163	4,163	\$10,111	\$ 2.43

Table D-4
March 2005 Reported Commercial Landings (Cont.)

Species	Caught	Sold	Value	Price/Lb.
Rudderfish	441	200	\$305	\$ 1.53
Damselfish	62	36	\$94	\$ 2.64
Hawkfish	34	5	\$10	\$ 1.98
Wrasse	277	242	\$1,267	\$ 5.24
Parrotfish	1,282	1,049	\$2,964	\$ 2.83
Surgeon/tangs	6,113	3,405	\$5,261	\$ 1.55
Flounders	184	184	\$461	\$ 2.50
Filefish	173	173	\$236	\$ 1.37
Pufferfish	3	3	\$2	\$ 0.50
Other pelagic	192	0	\$0	\$ 0.00
Moonfish (opah)	50,376	50,376	\$121,248	\$ 2.41
Rainbow runner	188	177	\$253	\$ 1.43
Mahimahi (dolphin)	167,842	164,335	\$383,174	\$ 2.33
Barracudas	3,372	3,188	\$2,538	\$ 0.80
Wahoo	99,165	99,165	\$256,523	\$ 2.59
Tunas (misc)	339	0	\$0	\$ 0.00
Skipjack tuna	113,428	92,587	\$76,858	\$ 0.83
Yellowfin tuna	284,691	284,691	\$770,197	\$ 2.71
Albacore	67,947	59,270	\$135,630	\$ 2.29
Bigeye tuna	755,021	755,021	\$2,758,384	\$ 3.65
Kawakawa	345	129	\$211	\$ 1.63
Broadbill swordfish	707,284	707,284	\$1,646,811	\$ 2.33
Blue marlin	48,290	44,466	\$59,605	\$ 1.34
Striped marlin	130,019	130,019	\$196,886	\$ 1.51
Shortnose spearfish	70,751	70,751	\$66,620	\$ 0.94
Sailfish	782	220	\$196	\$ 0.89
Spiny lobster	1,982	1,852	\$20,954	\$11.32
Slipper lobster	4	4	\$31	\$ 8.50
Crabs	1,908	982	\$3,886	\$ 3.96
Shrimp (saltwater)	2,920	30	\$270	\$ 9.00
Octopus	1,334	1,334	\$4,278	\$ 3.21
Limpets (saltwater)	902	391	\$4,220	\$10.79
Invertebrates	740	0	\$0	\$ 0.00
Algae	1,062	847	\$4,835	\$ 5.71
TOTAL	2,813,461	2,714,927	\$7,105,738	\$ 2.62

Table D-5
April 2005 Reported Commercial Landings

Species	Caught	Sold	Value	Price/Lb.
Miscellaneous	1,279	270	\$454	\$ 1.68
Sharks	22,818	21,060	\$7,866	\$ 0.37
Rays	9	0	\$0	\$ 0.00
Eels	6	6	\$9	\$ 1.49
Bigeye scad (akule)	89,593	38,643	\$75,601	\$ 1.96
Mackerel scad	11,497	7,705	\$15,476	\$ 2.01
Leatherjacket	18	11	\$12	\$ 1.13
Ten pounder	33	33	\$33	\$ 1.02
Bonefish	240	240	\$240	\$ 1.00
Milkfish	125	125	\$156	\$ 1.25
Needlefish	43	10	\$10	\$ 1.02
Threadfin	6	6	\$36	\$ 6.23
Mullet	2,114	2,114	\$6,882	\$ 3.26
Pomfret	77,199	76,474	\$140,242	\$ 1.83
Oilfish	41,259	41,259	\$59,930	\$ 1.45
Jacks (misc)	308	5	\$13	\$ 2.50
Amberjack	650	21	\$11	\$ 0.52
Sasa ulua	33	4	\$11	\$ 3.00
Pig-lipped ulua	745	723	\$2,296	\$ 3.18
Dobe ulua	11	11	\$38	\$ 3.34
Papa ulua	219	214	\$678	\$ 3.18
White ulua	631	407	\$795	\$ 1.95
Black ulua	69	19	\$33	\$ 1.76
Blue trevally	483	128	\$293	\$ 2.30
Hawaiian grouper	3,871	3,614	\$18,974	\$ 5.25
Blue spot grouper	66	16	\$31	\$ 2.00
Snappers	39	37	\$128	\$ 3.49
Yellowtail kali	5	0	\$0	\$ 0.00
Blue lined snapper	1,809	1,809	\$2,087	\$ 1.15
Ehu (red snapper)	1,602	1,586	\$8,141	\$ 5.13
Gindai (flower snapper)	610	603	\$1,979	\$ 3.28
Golden kalekale	558	522	\$2,390	\$ 4.58
Lehi (silverjaw)	614	485	\$1,749	\$ 3.61
Onaga (red snapper)	8,665	8,196	\$48,085	\$ 5.87
Opakapaka (pink snapper)	8,436	8,436	\$48,773	\$ 5.78
Uku (gray snapper)	9,369	7,485	\$25,280	\$ 3.38
Porgy	90	90	\$252	\$ 2.80
Other reef fish	4	0	\$0	\$ 0.00
Reef jacks	21	21	\$74	\$ 3.50
Squirrelfish	4,033	3,557	\$12,133	\$ 3.41
Trumpetfish	3	3	\$3	\$ 1.25
Scorpionfish	234	229	\$709	\$ 3.09
Mountain bass	335	310	\$921	\$ 2.98
Bigeyes	646	646	\$1,758	\$ 2.72

Table D-5
April 2005 Reported Commercial Landings (Cont.)

Species	Caught	Sold	Value	Price/Lb.
Goatfish	3,129	2,340	\$5,408	\$ 2.31
Rudderfish	481	315	\$390	\$ 1.24
Damselfish	167	138	\$363	\$ 2.63
Hawkfish	23	23	\$47	\$ 2.00
Tilapia	232	232	\$348	\$ 1.50
Wrasse	221	219	\$1,086	\$ 4.96
Parrotfish	2,483	2,483	\$7,597	\$ 3.06
Surgeon/tangs	8,024	8,024	\$12,633	\$ 1.57
Flounders	14	14	\$14	\$ 1.05
Filefish	249	249	\$293	\$ 1.18
Other pelagic	144	0	\$0	\$ 0.00
Moonfish (opah)	40,274	39,363	\$100,345	\$ 2.55
Rainbow runner	233	155	\$221	\$ 1.43
Mahimahi (dolphin)	159,595	155,501	\$431,457	\$ 2.77
Barracudas	6,726	6,726	\$7,796	\$ 1.16
Wahoo	123,165	118,879	\$239,073	\$ 2.01
Tunas (misc)	1,158	0	\$0	\$ 0.00
Skipjack tuna	64,352	52,610	\$61,066	\$ 1.16
Yellowfin tuna	172,195	169,311	\$495,100	\$ 2.92
Albacore	97,347	97,135	\$190,398	\$ 1.96
Bigeye tuna	543,826	490,631	\$2,070,196	\$ 4.22
Kawakawa	621	621	\$790	\$ 1.27
Other billfish	458	0	\$0	\$ 0.00
Broadbill swordfish	830,854	770,403	\$1,711,003	\$ 2.22
Blue marlin	92,199	92,199	\$91,688	\$ 0.99
Black marlin	393	0	\$0	\$ 0.00
Striped marlin	120,237	113,100	\$150,564	\$ 1.33
Shortnose spearfish	36,869	36,653	\$40,696	\$ 1.11
Sailfish	825	111	\$124	\$ 1.12
Spiny lobster	1,135	1,055	\$10,369	\$ 9.83
Crabs	2,876	1,405	\$5,809	\$ 4.14
Shrimp (saltwater)	2,947	0	\$0	\$ 0.00
Octopus	1,383	1,383	\$4,411	\$ 3.19
Limpets (saltwater)	1,324	672	\$7,296	\$10.87
Invertebrates	730	0	\$0	\$ 0.00
Algae	1,304	231	\$1,505	\$ 6.52
TOTAL	2,608,586	2,389,307	\$6,132,669	\$ 2.57

Table D-6
May 2005 Reported Commercial Landings

Species	Caught	Sold	Value	Price/Lb.
Miscellaneous	723	237	\$970	\$ 4.09
Sharks	46,833	20,958	\$6,693	\$ 0.32
Eels	59	59	\$62	\$ 1.06
Bigeye scad (akule)	69,018	35,394	\$69,980	\$ 1.98
Mackerel scad	10,014	8,385	\$18,987	\$ 2.26
Leatherjacket	37	22	\$34	\$ 1.52
Ten pounder	55	55	\$55	\$ 1.00
Bonfish	427	393	\$398	\$ 1.01
Milkfish	204	135	\$161	\$ 1.19
Needlefish	97	77	\$98	\$ 1.28
Threadfin	29	26	\$158	\$ 6.13
Mullet	1,173	1,173	\$3,926	\$ 3.35
Pomfret	71,289	71,289	\$115,168	\$ 1.62
Oilfish	42,727	42,727	\$46,927	\$ 1.10
Jacks (misc)	258	258	\$706	\$ 2.74
Amberjack	790	0	\$0	\$ 0.00
Sasa ulua	35	22	\$53	\$ 2.40
Pig-lipped ulua	556	556	\$1,612	\$ 2.90
Dobe ulua	13	13	\$47	\$ 3.52
Papa ulua	167	67	\$169	\$ 2.52
White ulua	1,480	1,480	\$2,694	\$ 1.82
Black ulua	100	48	\$108	\$ 2.26
Blue trevally	1,130	287	\$593	\$ 2.07
Hawaiian grouper	5,418	5,379	\$23,734	\$ 4.41
Blue spot grouper	58	14	\$29	\$ 2.00
Snappers	230	230	\$746	\$ 3.24
Blue lined snapper	3,978	3,679	\$3,925	\$ 1.07
Ehu (red snapper)	2,714	2,568	\$12,804	\$ 4.99
Gindai (flower snapper)	505	487	\$1,750	\$ 3.59
Golden kalekale	590	531	\$2,184	\$ 4.11
Lehi (silverjaw)	484	484	\$1,730	\$ 3.57
Onaga (red snapper)	4,276	4,173	\$32,622	\$ 7.82
Opakapaka (pink snapper)	6,784	6,784	\$45,350	\$ 6.69
Uku (gray snapper)	23,788	23,788	\$77,401	\$ 3.25
Porgy	238	238	\$548	\$ 2.30
Other reef fish	1	0	\$0	\$ 0.00
Reef jacks	18	18	\$54	\$ 3.00
Squirrelfish	4,668	4,480	\$15,611	\$ 3.48
Scorpionfish	116	104	\$500	\$ 4.80
Mountain bass	229	66	\$194	\$ 2.92
Bigeyes	855	636	\$1,508	\$ 2.37
Goatfish	5,262	5,262	\$13,495	\$ 2.56
Rudderfish	1,693	1,693	\$1,836	\$ 1.08
Damselfish	105	105	\$231	\$ 2.20

Table D-6
May 2005 Reported Commercial Landings (Cont.)

Species	Caught	Sold	Value	Price/Lb.
Hawkfish	35	35	\$95	\$ 2.74
Tilapia	154	154	\$231	\$ 1.50
Wrasse	337	270	\$1,045	\$ 3.88
Parrotfish	4,028	3,863	\$11,641	\$ 3.01
Surgeon/tangs	6,080	5,265	\$7,618	\$ 1.45
Filefish	216	216	\$221	\$ 1.03
Other pelagic	48	0	\$0	\$ 0.00
Moonfish (opah)	66,269	66,269	\$129,983	\$ 1.96
Rainbow runner	441	441	\$445	\$ 1.01
Mahimahi (dolphin)	112,747	98,141	\$291,817	\$ 2.97
Barracudas	9,311	9,311	\$3,553	\$ 0.38
Wahoo	111,723	97,779	\$208,653	\$ 2.13
Tunas (misc)	2,703	0	\$0	\$ 0.00
Skipjack tuna	103,709	78,162	\$75,210	\$ 0.96
Yellowfin tuna	236,730	236,730	\$602,439	\$ 2.54
Albacore	166,341	165,751	\$223,902	\$ 1.35
Bigeye tuna	548,967	493,917	\$1,872,903	\$ 3.79
Kawakawa	533	391	\$531	\$ 1.36
Other billfish	422	0	\$0	\$ 0.00
Broadbill swordfish	770,692	770,692	\$1,273,603	\$ 1.65
Blue marlin	158,819	134,010	\$65,981	\$ 0.49
Black marlin	434	222	\$147	\$ 0.66
Striped marlin	217,169	210,280	\$128,231	\$ 0.61
Shortnose spearfish	43,756	41,706	\$27,826	\$ 0.67
Sailfish	1,356	253	\$85	\$ 0.34
Spiny lobster	10	10	\$65	\$ 6.79
Crabs	153	153	\$683	\$ 4.46
Shrimp (saltwater)	19,406	30	\$270	\$ 9.00
Octopus	3,457	3,457	\$6,980	\$ 2.02
Squid	31	31	\$155	\$ 5.00
Limpets (saltwater)	792	681	\$5,075	\$ 7.45
Invertebrates	1,130	0	\$0	\$ 0.00
Algae	943	704	\$4,042	\$ 5.74
TOTAL	2,898,161	2,663,302	\$5,449,281	\$ 2.05

Table D-7
June 2005 Reported Commercial Landings

Species	Caught	Sold	Value	Price/Lb.
Miscellaneous	156	156	\$676	\$ 4.35
Sharks	26,940	26,940	\$10,038	\$ 0.37
Eels	30	30	\$33	\$ 1.09
Bigeye scad (akule)	98,988	29,035	\$57,077	\$ 1.97
Mackerel scad	5,823	4,807	\$10,945	\$ 2.28
Leatherjacket	31	9	\$11	\$ 1.27
Ten pounder	69	41	\$47	\$ 1.13
Bonfish	566	434	\$448	\$ 1.03
Milkfish	201	135	\$170	\$ 1.26
Needlefish	62	8	\$17	\$ 2.20
Mullet	401	276	\$1,108	\$ 4.01
Pomfret	49,471	49,471	\$128,774	\$ 2.60
Oilfish	37,013	37,013	\$75,667	\$ 2.04
Jacks (misc)	59	47	\$169	\$ 3.59
Amberjack	31	4	\$2	\$ 0.50
Sasa ulua	42	42	\$68	\$ 1.63
Pig-lipped ulua	597	162	\$467	\$ 2.88
Papa ulua	298	298	\$949	\$ 3.19
White ulua	1,416	773	\$1,608	\$ 2.08
Black ulua	602	602	\$1,187	\$ 1.97
Blue trevally	909	167	\$357	\$ 2.14
Hawaiian grouper	3,724	713	\$4,842	\$ 6.79
Blue spot grouper	46	6	\$12	\$ 2.01
Snappers	153	96	\$309	\$ 3.23
Yellowtail kali	4	0	\$0	\$ 0.00
Blue lined snapper	2,957	2,957	\$3,516	\$ 1.19
Ehu (red snapper)	1,778	1,070	\$6,000	\$ 5.61
Gindai (flower snapper)	787	84	\$401	\$ 4.80
Golden kalekale	502	347	\$1,218	\$ 3.51
Lehi (silverjaw)	85	80	\$242	\$ 3.04
Onaga (red snapper)	3,252	3,095	\$22,023	\$ 7.12
Opakapaka (pink snapper)	3,252	2,465	\$14,983	\$ 6.08
Uku (gray snapper)	20,731	18,548	\$61,338	\$ 3.31
Porgy	408	408	\$1,037	\$ 2.54
Other reef fish	2	0	\$0	\$ 0.00
Reef jacks	1	1	\$4	\$ 3.50
Squirrelfish	3,053	1,436	\$4,617	\$ 3.21
Scorpionfish	180	156	\$615	\$ 3.96
Mountain bass	99	68	\$193	\$ 2.84
Bigeyes	358	273	\$574	\$ 2.10
Goatfish	1,560	1,560	\$5,262	\$ 3.37
Rudderfish	430	142	\$219	\$ 1.54
Damselfish	335	233	\$680	\$ 2.92
Hawkfish	83	83	\$202	\$ 2.44

Table D-7
June 2005 Reported Commercial Landings (Cont.)

Species	Caught	Sold	Value	Price/Lb.
Tilapia	155	0	\$0	\$ 0.00
Wrasse	193	156	\$412	\$ 2.65
Parrotfish	4,974	4,683	\$14,527	\$ 3.10
Surgeon/tangs	7,706	7,351	\$10,946	\$ 1.49
Filefish	192	192	\$221	\$ 1.15
Moonfish (opah)	81,698	81,698	\$168,145	\$ 2.06
Rainbow runner	330	282	\$469	\$ 1.67
Mahimahi (dolphin)	51,958	46,008	\$186,534	\$ 4.05
Barracudas	1,629	1,550	\$1,567	\$ 1.01
Wahoo	98,012	87,700	\$251,900	\$ 2.87
Tunas (misc)	3,159	0	\$0	\$ 0.00
Skipjack tuna	163,472	154,356	\$109,063	\$ 0.71
Yellowfin tuna	278,009	278,009	\$559,175	\$ 2.01
Albacore	65,096	65,096	\$112,953	\$ 1.74
Bigeye tuna	862,421	817,416	\$2,570,503	\$ 3.14
Kawakawa	1,310	305	\$345	\$ 1.13
Other billfish	373	0	\$0	\$ 0.00
Broadbill swordfish	457,301	457,301	\$1,115,104	\$ 2.44
Blue marlin	164,876	134,232	\$94,435	\$ 0.70
Black marlin	902	751	\$618	\$ 0.82
Striped marlin	165,095	165,095	\$152,600	\$ 0.92
Shortnose spearfish	22,247	22,247	\$21,060	\$ 0.95
Sailfish	354	88	\$23	\$ 0.27
Crabs	293	293	\$1,573	\$ 5.37
Shrimp (saltwater)	26,025	0	\$0	\$ 0.00
Octopus	1,918	1,918	\$6,192	\$ 3.23
Squid	137	137	\$167	\$ 1.22
Limpets (saltwater)	362	362	\$2,059	\$ 5.69
Invertebrates	7,198	7,198	\$215,940	\$30.00
Algae	524	237	\$1,799	\$ 7.60
TOTAL	2,735,400	2,518,927	\$6,016,433	\$ 2.39

Table D-8
July 2005 Reported Commercial Landings

Species	Caught	Sold	Value	Price/Lb.
Miscellaneous	150	150	\$387	\$ 2.59
Sharks	21,576	21,234	\$7,057	\$ 0.33
Eels	45	45	\$45	\$ 1.00
Bigeye scad (akule)	61,970	24,256	\$49,535	\$ 2.04
Mackerel scad	9,089	7,383	\$17,663	\$ 2.39
Leatherjacket	135	135	\$176	\$ 1.31
Ten pounder	57	57	\$57	\$ 1.00
Bonfish	257	257	\$215	\$ 0.84
Milkfish	368	351	\$433	\$ 1.24
Needlefish	20	20	\$31	\$ 1.54
Mullet	681	630	\$2,320	\$ 3.68
Pomfret	35,655	34,013	\$100,780	\$ 2.96
Oilfish	27,659	27,659	\$72,341	\$ 2.62
Jacks (misc)	49	26	\$75	\$ 2.94
Amberjack	461	24	\$36	\$ 1.50
Sasa ulua	153	153	\$146	\$ 0.95
Pig-lipped ulua	1,366	1,366	\$4,562	\$ 3.34
Dobe ulua	7	7	\$26	\$ 3.70
Papa ulua	264	139	\$379	\$ 2.73
White ulua	2,368	2,368	\$4,667	\$ 1.97
Black ulua	16	16	\$35	\$ 2.20
Blue trevally	3,315	1,358	\$2,637	\$ 1.94
Hawaiian grouper	3,486	3,486	\$15,815	\$ 4.54
Blue spot grouper	36	16	\$33	\$ 2.00
Snappers	118	118	\$413	\$ 3.51
Blue lined snapper	4,253	3,320	\$3,478	\$ 1.05
Ehu (red snapper)	1,347	1,347	\$6,178	\$ 4.58
Gindai (flower snapper)	728	728	\$2,494	\$ 3.43
Golden kalekale	321	321	\$1,255	\$ 3.90
Lehi (silverjaw)	218	171	\$562	\$ 3.28
Onaga (red snapper)	1,544	1,232	\$11,939	\$ 9.70
Opakapaka (pink snapper)	2,423	2,423	\$15,503	\$ 6.40
Uku (gray snapper)	13,518	13,518	\$47,820	\$ 3.54
Snake mackerel	4	0	\$0	\$ 0.00
Porgy	173	173	\$371	\$ 2.15
Other reef fish	14	0	\$0	\$ 0.00
Squirrelfish	4,653	2,285	\$7,935	\$ 3.47
Scorpionfish	381	191	\$716	\$ 3.75
Mountain bass	182	135	\$427	\$ 3.16
Bigeyes	610	464	\$1,253	\$ 2.70
Goatfish	2,235	2,041	\$5,960	\$ 2.92
Rudderfish	2,196	2,196	\$2,403	\$ 1.09
Damselfish	420	178	\$508	\$ 2.85
Hawkfish	29	29	\$69	\$ 2.42

Table D-8
July 2005 Reported Commercial Landings (Cont.)

Species	Caught	Sold	Value	Price/Lb.
Tilapia	240	0	\$0	\$ 0.00
Wrasse	239	239	\$391	\$ 1.63
Parrotfish	2,831	2,750	\$8,174	\$ 2.97
Surgeon/tangs	11,596	11,596	\$15,441	\$ 1.33
Flounders	10	10	\$17	\$ 1.70
Filefish	86	86	\$292	\$ 3.41
Other pelagic	48	0	\$0	\$ 0.00
Moonfish (opah)	123,785	117,130	\$221,191	\$ 1.89
Rainbow runner	866	762	\$1,664	\$ 2.18
Mahimahi (dolphin)	76,552	71,821	\$286,137	\$ 3.98
Barracudas	1,922	1,915	\$2,034	\$ 1.06
Wahoo	87,080	75,893	\$241,710	\$ 3.18
Tunas (misc)	2,937	0	\$0	\$ 0.00
Skipjack tuna	110,982	101,106	\$109,071	\$ 1.08
Yellowfin tuna	277,026	277,026	\$519,620	\$ 1.88
Albacore	132,862	132,862	\$145,746	\$ 1.10
Bigeye tuna	1,218,173	1,145,842	\$3,315,337	\$ 2.89
Kawakawa	586	384	\$495	\$ 1.29
Other billfish	880	0	\$0	\$ 0.00
Broadbill swordfish	150,478	147,659	\$356,077	\$ 2.41
Blue marlin	126,519	104,864	\$124,647	\$ 1.19
Black marlin	642	239	\$277	\$ 1.16
Striped marlin	54,238	54,238	\$97,887	\$ 1.80
Shortnose spearfish	16,700	15,391	\$25,198	\$ 1.64
Sailfish	566	216	\$264	\$ 1.22
Crabs	165	165	\$988	\$ 6.00
Shrimp (saltwater)	14,082	0	\$0	\$ 0.00
Octopus	3,191	3,191	\$10,212	\$ 3.20
Squid	162	162	\$375	\$ 2.32
Limpets (saltwater)	484	484	\$5,153	\$10.64
Invertebrates	34	34	\$101	\$ 3.00
Algae	771	731	\$3,324	\$ 4.55
TOTAL	2,621,277	2,422,811	\$5,880,554	\$ 2.43

Table D-9
August 2005 Reported Commercial Landings

Species	Caught	Sold	Value	Price/Lb.
Miscellaneous	191	191	\$282	\$ 1.48
Sharks	38,293	23,744	\$10,985	\$ 0.46
Eels	50	50	\$50	\$ 1.00
Bigeye scad (akule)	37,309	12,059	\$26,121	\$ 2.17
Mackerel scad	16,068	11,725	\$28,176	\$ 2.40
Leatherjacket	76	35	\$43	\$ 1.23
Ten pounder	93	77	\$77	\$ 1.00
Bonfish	758	758	\$762	\$ 1.01
Milkfish	563	563	\$597	\$ 1.06
Needlefish	28	3	\$4	\$ 1.50
Threadfin	4	4	\$9	\$ 2.50
Mullet	659	659	\$2,212	\$ 3.35
Pomfret	55,705	52,594	\$129,849	\$ 2.47
Oilfish	16,721	16,721	\$49,822	\$ 2.98
Jacks (misc)	129	129	\$239	\$ 1.85
Amberjack	595	0	\$0	\$ 0.00
Sasa ulua	146	131	\$177	\$ 1.35
Pig-lipped ulua	343	266	\$717	\$ 2.69
Papa ulua	296	296	\$774	\$ 2.61
White ulua	2,300	2,300	\$4,585	\$ 1.99
Black ulua	44	9	\$16	\$ 1.75
Blue trevally	1,986	695	\$1,169	\$ 1.68
Hawaiian grouper	3,637	3,486	\$13,230	\$ 3.79
Blue spot grouper	44	10	\$20	\$ 2.00
Snappers	257	245	\$904	\$ 3.70
Yellowtail kali	14	0	\$0	\$ 0.00
Blue lined snapper	4,453	4,186	\$4,548	\$ 1.09
Ehu (red snapper)	2,756	2,003	\$8,900	\$ 4.44
Gindai (flower snapper)	698	619	\$2,108	\$ 3.40
Golden kalekale	596	481	\$1,592	\$ 3.31
Lehi (silverjaw)	483	483	\$1,707	\$ 3.53
Onaga (red snapper)	3,718	3,566	\$25,402	\$ 7.12
Opakapaka (pink snapper)	4,740	4,478	\$25,464	\$ 5.69
Uku (gray snapper)	20,973	20,376	\$64,816	\$ 3.18
Porgy	179	119	\$289	\$ 2.42
Other reef fish	14	0	\$0	\$ 0.00
Squirrelfish	5,187	5,187	\$18,387	\$ 3.54
Trumpetfish	7	0	\$0	\$ 0.00
Scorpionfish	346	297	\$1,289	\$ 4.34
Mountain bass	228	97	\$283	\$ 2.92
Bigeyes	617	539	\$1,433	\$ 2.66
Goatfish	5,346	4,214	\$12,619	\$ 2.99
Rudderfish	8,326	8,326	\$7,900	\$ 0.95
Damselfish	323	203	\$534	\$ 2.63

Table D-9
August 2005 Reported Commercial Landings (Cont.)

Species	Caught	Sold	Value	Price/Lb.
Hawkfish	120	120	\$307	\$ 2.56
Tilapia	421	0	\$0	\$ 0.00
Wrasse	671	630	\$2,305	\$ 3.66
Parrotfish	4,602	4,565	\$13,467	\$ 2.95
Surgeon/tangs	13,861	12,365	\$16,613	\$ 1.34
Flounders	20	20	\$25	\$ 1.24
Filefish	110	21	\$28	\$ 1.33
Moonfish (opah)	190,150	190,150	\$218,922	\$ 1.15
Rainbow runner	1,101	1,101	\$1,608	\$ 1.46
Mahimahi (dolphin)	91,491	90,391	\$295,142	\$ 3.27
Barracudas	5,889	5,889	\$2,674	\$ 0.45
Wahoo	75,207	66,730	\$210,567	\$ 3.16
Tunas (misc)	2,831	289	\$392	\$ 1.36
Skipjack tuna	165,644	155,184	\$264,160	\$ 1.70
Yellowfin tuna	275,598	275,598	\$730,394	\$ 2.65
Albacore	190,901	190,901	\$199,193	\$ 1.04
Bigeye tuna	900,887	866,476	\$3,153,289	\$ 3.64
Kawakawa	1,402	439	\$479	\$ 1.09
Other billfish	1,893	166	\$133	\$ 0.80
Broadbill swordfish	80,449	80,449	\$176,454	\$ 2.19
Blue marlin	111,343	107,043	\$127,626	\$ 1.19
Black marlin	313	90	\$105	\$ 1.16
Striped marlin	41,885	39,347	\$71,675	\$ 1.82
Shortnose spearfish	18,789	18,789	\$29,680	\$ 1.58
Sailfish	1,474	424	\$718	\$ 1.69
Crabs	2,356	471	\$2,075	\$ 4.41
Shrimp (saltwater)	16,473	24	\$216	\$ 9.00
Octopus	2,926	2,613	\$8,450	\$ 3.23
Squid	346	346	\$605	\$ 1.75
Limpets (saltwater)	462	462	\$4,144	\$ 8.96
Invertebrates	5	5	\$14	\$ 3.00
Algae	897	897	\$4,065	\$ 4.53
TOTAL	2,435,814	2,293,920	\$5,983,615	\$ 2.61

Table D-10
September 2005 Reported Commercial Landings

Species	Caught	Sold	Value	Price/Lb.
Miscellaneous	101	35	\$72	\$ 2.06
Sharks	27,528	22,308	\$12,877	\$ 0.58
Eels	14	14	\$15	\$ 1.09
Bigeye scad (akule)	10,049	8,253	\$19,381	\$ 2.35
Mackerel scad	27,139	17,251	\$42,358	\$ 2.46
Leatherjacket	22	22	\$29	\$ 1.31
Ten pounder	54	42	\$43	\$ 1.02
Bonfish	145	143	\$166	\$ 1.16
Milkfish	296	296	\$330	\$ 1.12
Needlefish	52	31	\$63	\$ 2.03
Threadfin	45	41	\$250	\$ 6.15
Mullet	1,350	1,344	\$4,798	\$ 3.57
Pomfret	65,007	55,244	\$116,950	\$ 2.12
Oilfish	14,853	14,354	\$43,084	\$ 3.00
Jacks (misc)	46	8	\$35	\$ 4.38
Amberjack	122	52	\$26	\$ 0.50
Sasa ulua	171	171	\$320	\$ 1.88
Pig-lipped ulua	1,411	821	\$2,412	\$ 2.94
Papa ulua	137	137	\$481	\$ 3.52
White ulua	545	403	\$796	\$ 1.97
Black ulua	121	10	\$20	\$ 2.00
Blue trevally	556	147	\$319	\$ 2.17
Hawaiian grouper	5,017	5,017	\$21,032	\$ 4.19
Blue spot grouper	22	8	\$17	\$ 2.01
Snappers	185	185	\$566	\$ 3.05
Yellowtail kali	1	0	\$0	\$ 0.00
Blue lined snapper	2,987	2,553	\$3,020	\$ 1.18
Ehu (red snapper)	1,929	1,929	\$8,082	\$ 4.19
Gindai (flower snapper)	803	803	\$2,698	\$ 3.36
Golden kalekale	298	298	\$1,344	\$ 4.51
Lehi (silverjaw)	290	290	\$913	\$ 3.15
Onaga (red snapper)	4,156	3,011	\$21,791	\$ 7.24
Opakapaka (pink snapper)	2,664	2,378	\$13,803	\$ 5.81
Uku (gray snapper)	12,160	9,646	\$29,654	\$ 3.07
Porgy	136	68	\$117	\$ 1.72
Reef jacks	2	2	\$7	\$ 3.50
Squirrelfish	2,826	2,826	\$9,918	\$ 3.51
Trumpetfish	2	2	\$2	\$ 1.00
Scorpionfish	141	134	\$557	\$ 4.15
Mountain bass	355	176	\$636	\$ 3.60
Bigeyes	372	248	\$647	\$ 2.61
Goatfish	1,455	1,377	\$4,674	\$ 3.39
Rudderfish	503	298	\$321	\$ 1.08
Damselfish	216	64	\$154	\$ 2.41

Table D-10
September 2005 Reported Commercial Landings (Cont.)

Species	Caught	Sold	Value	Price/Lb.
Hawkfish	33	33	\$75	\$ 2.30
Tilapia	540	50	\$100	\$ 2.00
Wrasse	291	230	\$786	\$ 3.43
Parrotfish	2,781	2,014	\$5,986	\$ 2.97
Surgeon/tangs	9,967	6,538	\$9,308	\$ 1.42
Flounders	12	12	\$19	\$ 1.60
Filefish	19	19	\$37	\$ 1.92
Moonfish (opah)	166,621	163,978	\$185,465	\$ 1.13
Rainbow runner	577	425	\$662	\$ 1.56
Mahimahi (dolphin)	85,008	72,827	\$263,421	\$ 3.62
Barracudas	1,110	1,110	\$930	\$ 0.84
Wahoo	45,909	40,053	\$147,623	\$ 3.69
Tunas (misc)	3,164	533	\$6,433	\$12.07
Skipjack tuna	147,936	147,936	\$196,938	\$ 1.33
Yellowfin tuna	217,674	217,674	\$573,675	\$ 2.64
Albacore	69,928	69,928	\$110,702	\$ 1.58
Bigeye tuna	953,159	880,379	\$3,300,604	\$ 3.75
Kawakawa	449	51	\$62	\$ 1.21
Other billfish	255	0	\$0	\$ 0.00
Broadbill swordfish	10,673	9,367	\$28,993	\$ 3.10
Blue marlin	96,163	86,241	\$119,115	\$ 1.38
Black marlin	546	188	\$203	\$ 1.08
Striped marlin	31,671	31,671	\$64,820	\$ 2.05
Shortnose spearfish	16,011	14,973	\$24,417	\$ 1.63
Sailfish	1,249	889	\$1,548	\$ 1.74
Spiny lobster	1,976	1,727	\$20,075	\$11.63
Slipper lobster	10	0	\$0	\$ 0.00
Crabs	4,215	890	\$3,694	\$ 4.15
Shrimp (saltwater)	8,649	0	\$0	\$ 0.00
Octopus	2,096	1,577	\$5,179	\$ 3.28
Squid	387	387	\$708	\$ 1.83
Limpets (saltwater)	330	157	\$1,534	\$ 9.75
Algae	554	554	\$2,530	\$ 4.57
TOTAL	2,066,241	1,904,846	\$5,440,416	\$ 2.86

Table D-11
October 2005 Reported Commercial Landings

Species	Caught	Sold	Value	Price/Lb.
Miscellaneous	237	237	\$136	\$ 0.57
Sharks	49,752	16,687	\$6,954	\$ 0.42
Eels	150	150	\$169	\$ 1.13
Bigeye scad (akule)	8,334	8,334	\$11,603	\$ 1.39
Mackerel scad	42,291	23,773	\$55,777	\$ 2.35
Leatherjacket	81	11	\$12	\$ 1.14
Ten pounder	12	12	\$12	\$ 1.00
Bonfish	607	524	\$532	\$ 1.02
Milkfish	19	19	\$19	\$ 1.00
Needlefish	144	73	\$110	\$ 1.51
Threadfin	80	55	\$233	\$ 4.24
Mullet	520	520	\$1,601	\$ 3.08
Pomfret	67,960	67,960	\$134,050	\$ 1.97
Oilfish	21,233	21,233	\$50,523	\$ 2.38
Jacks (misc)	55	33	\$38	\$ 1.14
Amberjack	147	22	\$11	\$ 0.50
Sasa ulua	367	176	\$410	\$ 2.34
Pig-lipped ulua	1,466	1,466	\$4,380	\$ 2.99
Papa ulua	201	137	\$468	\$ 3.41
White ulua	771	636	\$1,066	\$ 1.68
Black ulua	58	58	\$128	\$ 2.20
Blue trevally	378	187	\$368	\$ 1.97
Hawaiian grouper	3,873	3,164	\$11,537	\$ 3.65
Blue spot grouper	72	59	\$138	\$ 2.34
Snappers	288	197	\$658	\$ 3.34
Yellowtail kali	8	0	\$0	\$ 0.00
Blue lined snapper	3,707	3,707	\$4,924	\$ 1.33
Ehu (red snapper)	1,440	1,124	\$5,547	\$ 4.94
Gindai (flower snapper)	636	575	\$1,664	\$ 2.89
Golden kalekale	465	353	\$1,375	\$ 3.90
Lehi (silverjaw)	206	186	\$740	\$ 3.98
Onaga (red snapper)	7,211	4,976	\$37,674	\$ 7.57
Opakapaka (pink snapper)	3,038	3,038	\$17,298	\$ 5.69
Uku (gray snapper)	11,889	11,889	\$38,573	\$ 3.24
Porgy	233	233	\$744	\$ 3.20
Other reef fish	21	3	\$10	\$ 3.00
Squirrelfish	2,858	2,858	\$10,202	\$ 3.57
Scorpionfish	192	115	\$502	\$ 4.38
Mountain bass	155	150	\$653	\$ 4.36
Bigeyes	360	294	\$894	\$ 3.05
Goatfish	1,524	1,524	\$5,655	\$ 3.71
Rudderfish	236	236	\$273	\$ 1.16
Damselfish	84	84	\$156	\$ 1.85
Hawkfish	37	37	\$97	\$ 2.64

Table D-11
October 2005 Reported Commercial Landings (Cont.)

Species	Caught	Sold	Value	Price/Lb.
Wrasse	565	565	\$1,427	\$ 2.52
Parrotfish	2,697	2,135	\$6,336	\$ 2.97
Surgeon/tangs	8,022	8,022	\$11,266	\$ 1.40
Flounders	24	24	\$24	\$ 1.00
Filefish	37	37	\$204	\$ 5.55
Pufferfish	5	0	\$0	\$ 0.00
Other pelagic	96	0	\$0	\$ 0.00
Moonfish (opah)	119,054	119,054	\$186,655	\$ 1.57
Rainbow runner	283	236	\$420	\$ 1.78
Mahimahi (dolphin)	149,474	130,980	\$313,192	\$ 2.39
Barracudas	294	163	\$272	\$ 1.67
Wahoo	34,605	32,287	\$113,188	\$ 3.51
Tunas (misc)	7,659	7,659	\$22,485	\$ 2.94
Skipjack tuna	62,735	55,218	\$79,871	\$ 1.45
Yellowfin tuna	190,258	184,357	\$412,136	\$ 2.24
Albacore	33,135	33,135	\$60,001	\$ 1.81
Bigeye tuna	1,192,628	1,167,314	\$3,692,371	\$ 3.16
Kawakawa	351	134	\$210	\$ 1.57
Other billfish	1,662	0	\$0	\$ 0.00
Broadbill swordfish	9,526	8,175	\$23,150	\$ 2.83
Blue marlin	75,393	69,500	\$97,968	\$ 1.41
Black marlin	432	137	\$217	\$ 1.58
Striped marlin	57,032	57,032	\$102,004	\$ 1.79
Shortnose spearfish	27,726	21,851	\$28,814	\$ 1.32
Sailfish	5,470	2,676	\$2,691	\$ 1.01
Spiny lobster	1,374	1,019	\$10,756	\$10.55
Slipper lobster	38	4	\$29	\$ 8.00
Crabs	3,390	677	\$2,631	\$ 3.89
Shrimp (saltwater)	31	0	\$0	\$ 0.00
Octopus	2,671	1,774	\$5,753	\$ 3.24
Squid	130	23	\$70	\$ 3.00
Limpets (saltwater)	303	303	\$4,434	\$14.63
Invertebrates	32	32	\$286	\$ 8.93
Algae	869	631	\$3,835	\$ 6.08
TOTAL	2,221,389	2,082,253	\$5,590,607	\$ 2.68

Table D-12
November 2005 Reported Commercial Landings

Species	Caught	Sold	Value	Price/Lb.
Miscellaneous	124	124	\$61	\$ 0.49
Sharks	61,657	24,156	\$5,147	\$ 0.21
Rays	26	0	\$0	\$ 0.00
Eels	6	6	\$8	\$ 1.30
Bigeye scad (akule)	40,178	11,874	\$27,589	\$ 2.32
Mackerel scad	48,050	31,714	\$67,630	\$ 2.13
Leatherjacket	42	30	\$40	\$ 1.36
Ten pounder	49	44	\$50	\$ 1.13
Bonefish	289	51	\$56	\$ 1.11
Milkfish	270	235	\$296	\$ 1.26
Needlefish	88	11	\$24	\$ 2.14
Threadfin	138	82	\$512	\$ 6.22
Mullet	1,724	1,724	\$6,096	\$ 3.54
Pomfret	48,356	44,356	\$106,255	\$ 2.40
Oilfish	21,104	20,654	\$48,446	\$ 2.35
Jacks (misc)	154	86	\$190	\$ 2.22
Amberjack	718	24	\$29	\$ 1.21
Sasa ulua	178	34	\$96	\$ 2.80
Pig-lipped ulua	697	697	\$1,916	\$ 2.75
Papa ulua	971	513	\$1,619	\$ 3.16
White ulua	741	736	\$1,647	\$ 2.24
Black ulua	125	81	\$162	\$ 1.99
Blue trevally	170	29	\$73	\$ 2.54
Hawaiian grouper	3,964	3,421	\$17,415	\$ 5.09
Blue spot grouper	22	12	\$42	\$ 3.50
Snappers	183	183	\$176	\$ 0.96
Blue lined snapper	4,503	4,079	\$5,213	\$ 1.28
Ehu (red snapper)	3,199	1,966	\$11,061	\$ 5.63
Gindai (flower snapper)	637	503	\$2,037	\$ 4.05
Golden kalekale	867	695	\$2,531	\$ 3.64
Lehi (silverjaw)	659	658	\$2,388	\$ 3.63
Onaga (red snapper)	13,016	8,563	\$59,705	\$ 6.97
Opakapaka (pink snapper)	12,856	11,320	\$66,262	\$ 5.85
Uku (gray snapper)	8,991	7,178	\$24,200	\$ 3.37
Porgy	108	108	\$187	\$ 1.73
Other reef fish	3	0	\$0	\$ 0.00
Reef jacks	1	1	\$3	\$ 3.00
Squirrelfish	3,496	3,496	\$13,026	\$ 3.73
Trumpetfish	1	1	\$2	\$ 1.50
Scorpionfish	257	173	\$860	\$ 4.96
Mountain bass	102	47	\$231	\$ 4.87
Bigeyes	394	394	\$1,366	\$ 3.47
Goatfish	4,949	3,821	\$10,618	\$ 2.78
Rudderfish	4,157	4,080	\$4,158	\$ 1.02

Table D-12
November 2005 Reported Commercial Landings (Cont.)

Species	Caught	Sold	Value	Price/Lb.
Damselfish	92	92	\$246	\$ 2.69
Hawkfish	18	15	\$35	\$ 2.35
Tilapia	548	548	\$742	\$ 1.35
Wrasse	447	307	\$1,789	\$ 5.83
Parrotfish	2,421	2,216	\$6,655	\$ 3.00
Surgeon/tangs	5,901	5,901	\$9,375	\$ 1.59
Flounders	10	4	\$4	\$ 1.00
Filefish	8	8	\$14	\$ 1.66
Moonfish (opah)	96,563	95,482	\$191,492	\$ 2.01
Rainbow runner	520	300	\$424	\$ 1.41
Mahimahi (dolphin)	222,515	181,016	\$351,464	\$ 1.94
Barracudas	1,356	1,230	\$1,400	\$ 1.14
Wahoo	37,579	32,545	\$115,024	\$ 3.53
Tunas (misc)	1,348	240	\$668	\$ 2.78
Skipjack tuna	47,619	32,995	\$52,136	\$ 1.58
Yellowfin tuna	242,603	233,762	\$502,251	\$ 2.15
Albacore	10,216	10,216	\$23,101	\$ 2.26
Bigeye tuna	1,204,920	1,073,435	\$3,497,490	\$ 3.26
Kawakawa	749	343	\$590	\$ 1.72
Other billfish	720	149	\$186	\$ 1.25
Broadbill swordfish	53,568	53,014	\$128,431	\$ 2.42
Blue marlin	69,033	54,656	\$75,263	\$ 1.38
Black marlin	139	139	\$161	\$ 1.16
Striped marlin	69,936	69,936	\$118,953	\$ 1.70
Shortnose spearfish	34,190	25,750	\$27,139	\$ 1.05
Sailfish	3,354	1,171	\$1,331	\$ 1.14
Spiny lobster	1,385	1,193	\$13,612	\$11.41
Crabs	4,450	620	\$2,158	\$ 3.48
Shrimp (saltwater)	11,973	0	\$0	\$ 0.00
Octopus	1,809	1,333	\$4,340	\$ 3.26
Squid	282	282	\$432	\$ 1.53
Limpets (saltwater)	375	375	\$3,161	\$ 8.43
Algae	832	389	\$2,072	\$ 5.33
TOTAL	2,415,697	2,067,620	\$5,621,562	\$ 2.72

Table D-13
December 2005 Reported Commercial Landings

Species	Caught	Sold	Value	Price/Lb.
Miscellaneous	247	247	\$435	\$ 1.76
Sharks	47,835	23,167	\$3,761	\$ 0.16
Eels	18	4	\$6	\$ 1.50
Bigeye scad (akule)	61,897	14,112	\$30,479	\$ 2.16
Mackerel scad	36,863	22,353	\$45,519	\$ 2.04
Leatherjacket	15	15	\$19	\$ 1.28
Ten pounder	59	59	\$59	\$ 1.00
Bonfish	100	100	\$113	\$ 1.13
Milkfish	190	190	\$357	\$ 1.88
Needlefish	40	0	\$0	\$ 0.00
Threadfin	65	65	\$362	\$ 5.60
Mullet	11	1	\$3	\$ 2.00
Pomfret	39,198	36,571	\$93,582	\$ 2.56
Oilfish	37,462	37,462	\$56,481	\$ 1.51
Jacks (misc)	163	13	\$25	\$ 1.96
Amberjack	2,836	40	\$36	\$ 0.90
Sasa ulua	28	25	\$30	\$ 1.20
Pig-lipped ulua	1,332	1,214	\$2,222	\$ 1.83
Dobe ulua	20	20	\$41	\$ 2.00
Papa ulua	1,401	609	\$1,928	\$ 3.16
White ulua	1,070	617	\$1,212	\$ 1.96
Black ulua	361	361	\$507	\$ 1.40
Blue trevally	167	155	\$227	\$ 1.47
Hawaiian grouper	7,110	7,110	\$32,057	\$ 4.51
Blue spot grouper	31	0	\$0	\$ 0.00
Snappers	193	193	\$653	\$ 3.37
Yellowtail kali	9	0	\$0	\$ 0.00
Blue lined snapper	8,011	8,011	\$9,207	\$ 1.15
Ehu (red snapper)	9,016	7,095	\$29,403	\$ 4.14
Gindai (flower snapper)	802	580	\$2,005	\$ 3.46
Golden kalekale	2,423	1,656	\$5,509	\$ 3.33
Lehi (silverjaw)	1,864	1,540	\$4,505	\$ 2.92
Onaga (red snapper)	28,562	23,673	\$156,704	\$ 6.62
Opakapaka (pink snapper)	22,690	16,399	\$92,763	\$ 5.66
Uku (gray snapper)	11,370	11,370	\$35,071	\$ 3.08
Porgy	96	96	\$102	\$ 1.06
Other reef fish	6	0	\$0	\$ 0.00
Reef jacks	2	2	\$7	\$ 3.50
Squirrelfish	2,979	2,918	\$10,661	\$ 3.65
Trumpetfish	17	15	\$20	\$ 1.38
Scorpionfish	675	478	\$2,182	\$ 4.56
Mountain bass	109	109	\$414	\$ 3.79
Bigeyes	485	485	\$1,490	\$ 3.07
Goatfish	4,676	3,816	\$10,468	\$ 2.74

Table D-13
December 2005 Reported Commercial Landings (Cont.)

Species	Caught	Sold	Value	Price/Lb.
Rudderfish	194	193	\$221	\$ 1.14
Damselfish	357	131	\$343	\$ 2.61
Hawkfish	24	24	\$59	\$ 2.46
Tilapia	150	150	\$263	\$ 1.75
Wrasse	370	313	\$1,789	\$ 5.71
Parrotfish	1,717	1,537	\$4,524	\$ 2.94
Surgeon/tangs	6,839	5,369	\$8,095	\$ 1.51
Flounders	5	5	\$10	\$ 2.00
Filefish	23	23	\$41	\$ 1.75
Other pelagic	144	0	\$0	\$ 0.00
Moonfish (opah)	65,550	65,550	\$139,724	\$ 2.13
Rainbow runner	449	119	\$167	\$ 1.41
Mahimahi (dolphin)	199,350	176,894	\$275,649	\$ 1.56
Barracudas	956	392	\$393	\$ 1.00
Wahoo	53,236	49,402	\$137,646	\$ 2.79
Tunas (misc)	920	5	\$8	\$ 1.50
Skipjack tuna	45,977	33,428	\$46,464	\$ 1.39
Yellowfin tuna	281,917	273,016	\$572,153	\$ 2.10
Albacore	46,086	46,086	\$84,856	\$ 1.84
Bigeye tuna	1,297,334	1,297,334	\$4,628,165	\$ 3.57
Kawakawa	761	187	\$472	\$ 2.52
Other billfish	501	0	\$0	\$ 0.00
Broadbill swordfish	138,955	138,955	\$326,729	\$ 2.35
Blue marlin	44,807	28,733	\$38,733	\$ 1.35
Black marlin	141	141	\$328	\$ 2.32
Striped marlin	98,080	98,080	\$179,666	\$ 1.83
Shortnose spearfish	44,324	43,864	\$33,737	\$ 0.77
Sailfish	1,117	288	\$297	\$ 1.03
Spiny lobster	1,411	1,303	\$14,795	\$11.35
Slipper lobster	2	2	\$19	\$ 8.00
Crabs	5,714	1,998	\$7,967	\$ 3.99
Shrimp (saltwater)	10,080	0	\$0	\$ 0.00
Octopus	1,442	1,069	\$3,349	\$ 3.13
Squid	68	58	\$111	\$ 1.93
Limpets (saltwater)	376	376	\$4,009	\$10.65
Invertebrates	800	0	\$0	\$ 0.00
Algae	610	610	\$4,304	\$ 7.06
TOTAL	2,683,288	2,488,581	\$7,145,708	\$ 2.87

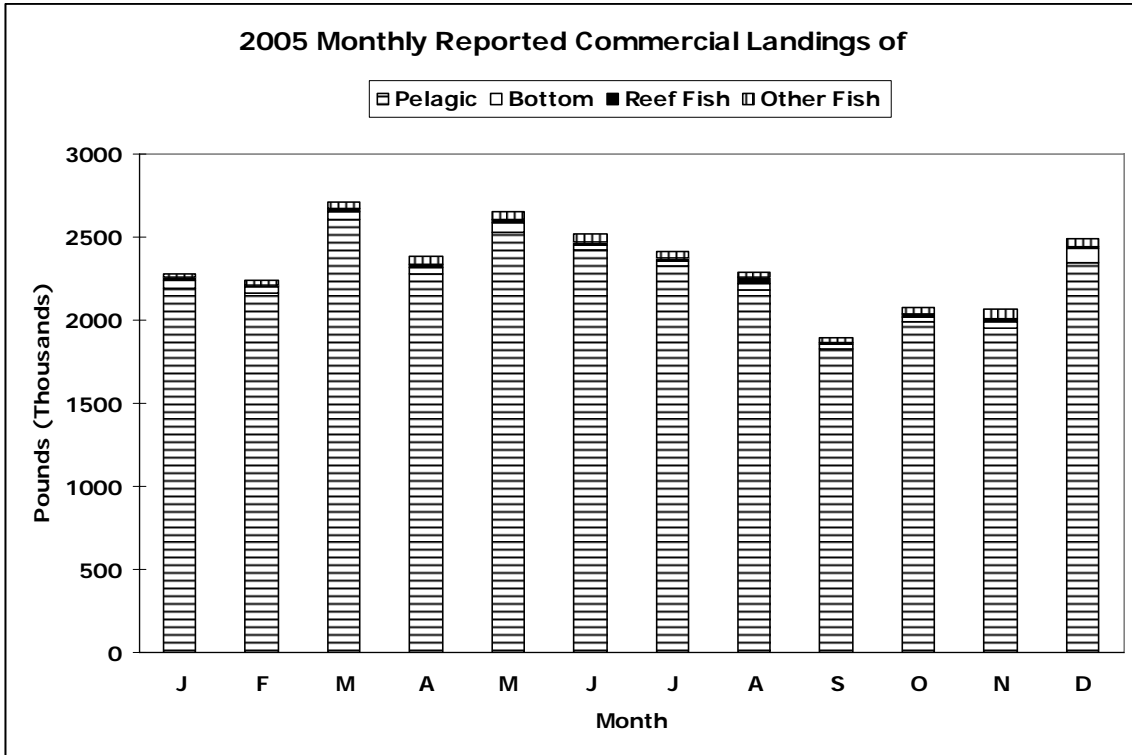


Figure D-1-1

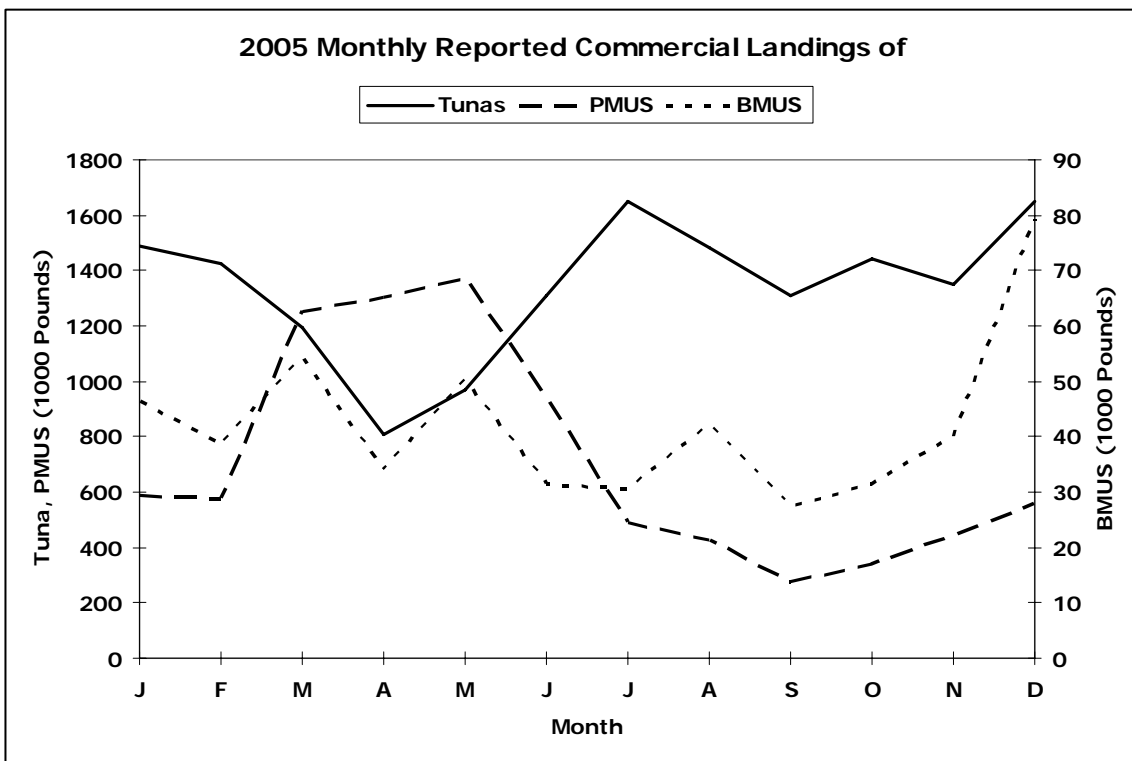


Figure D-1-2

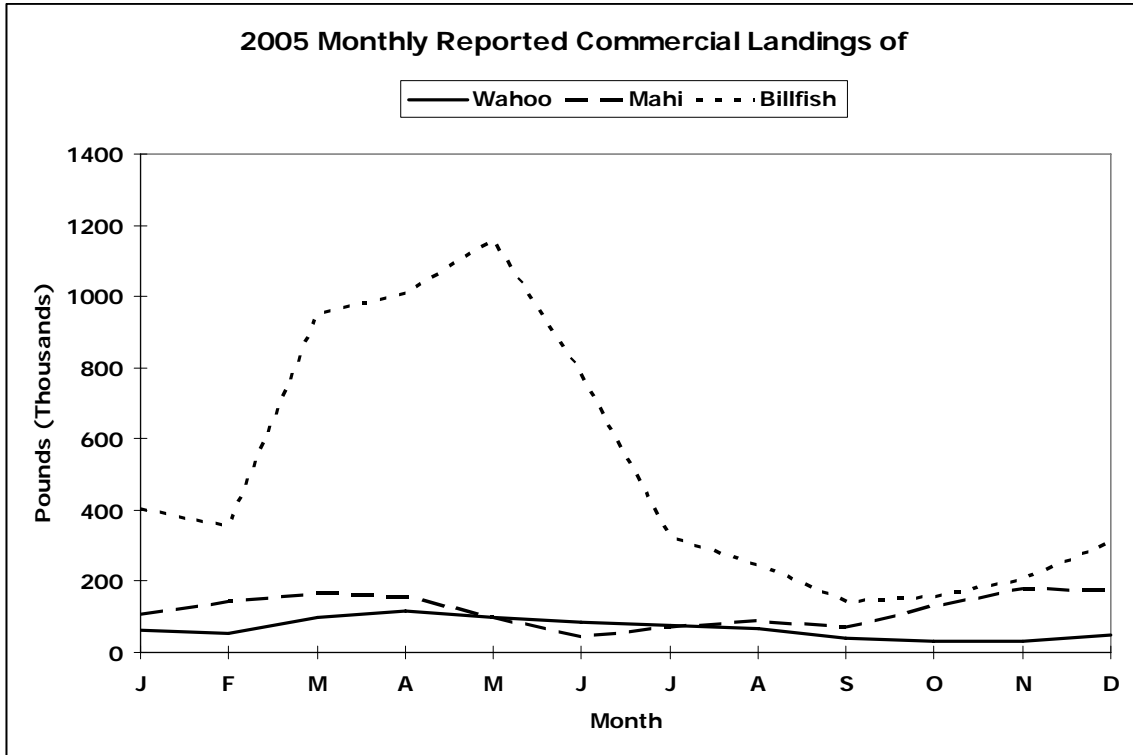


Figure D-1-3

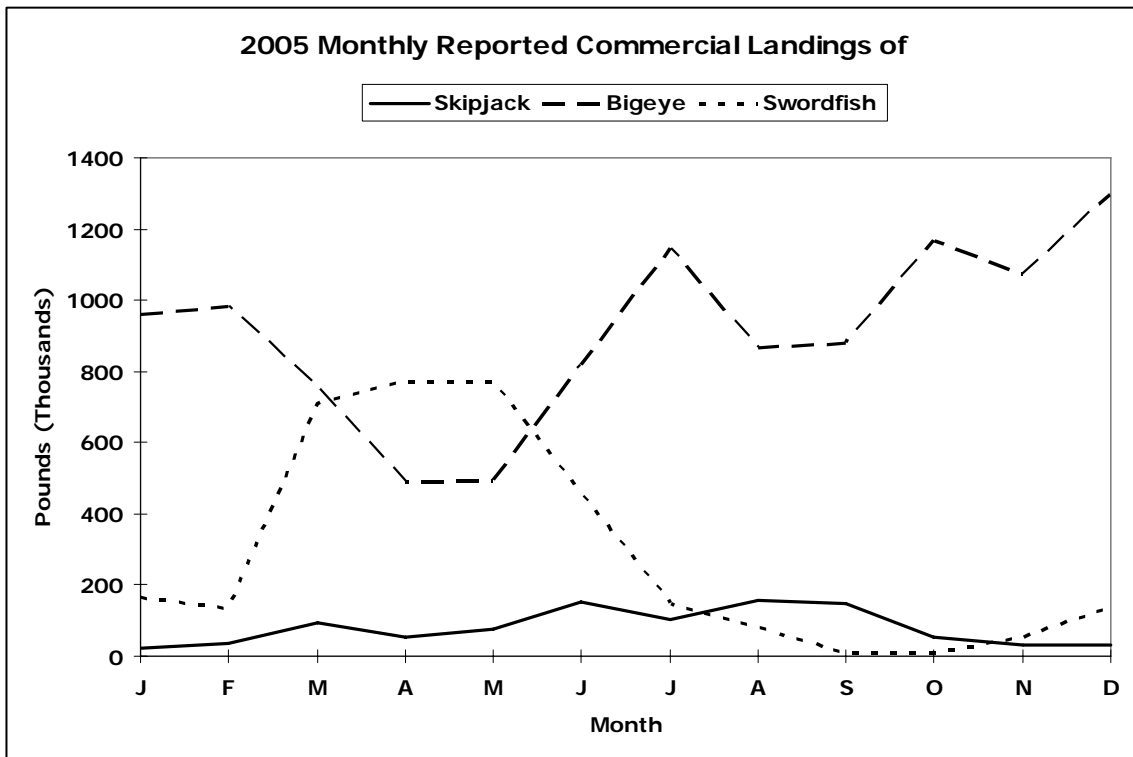


Figure D-1-4

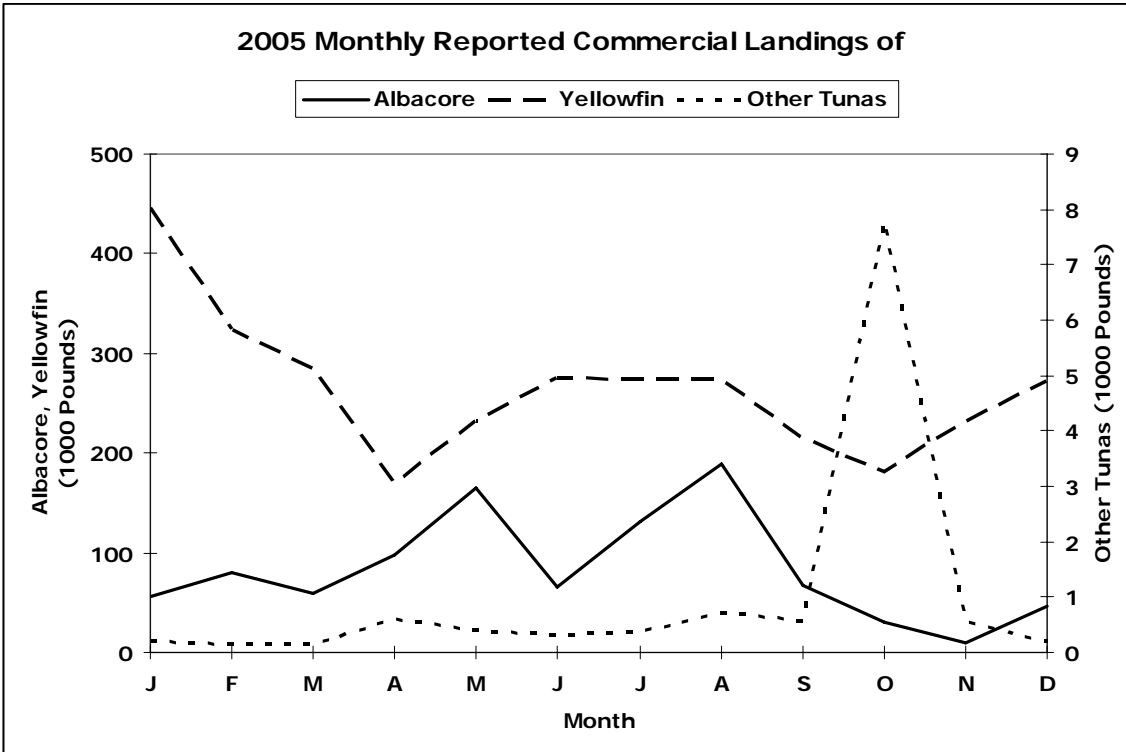


Figure D-1-5

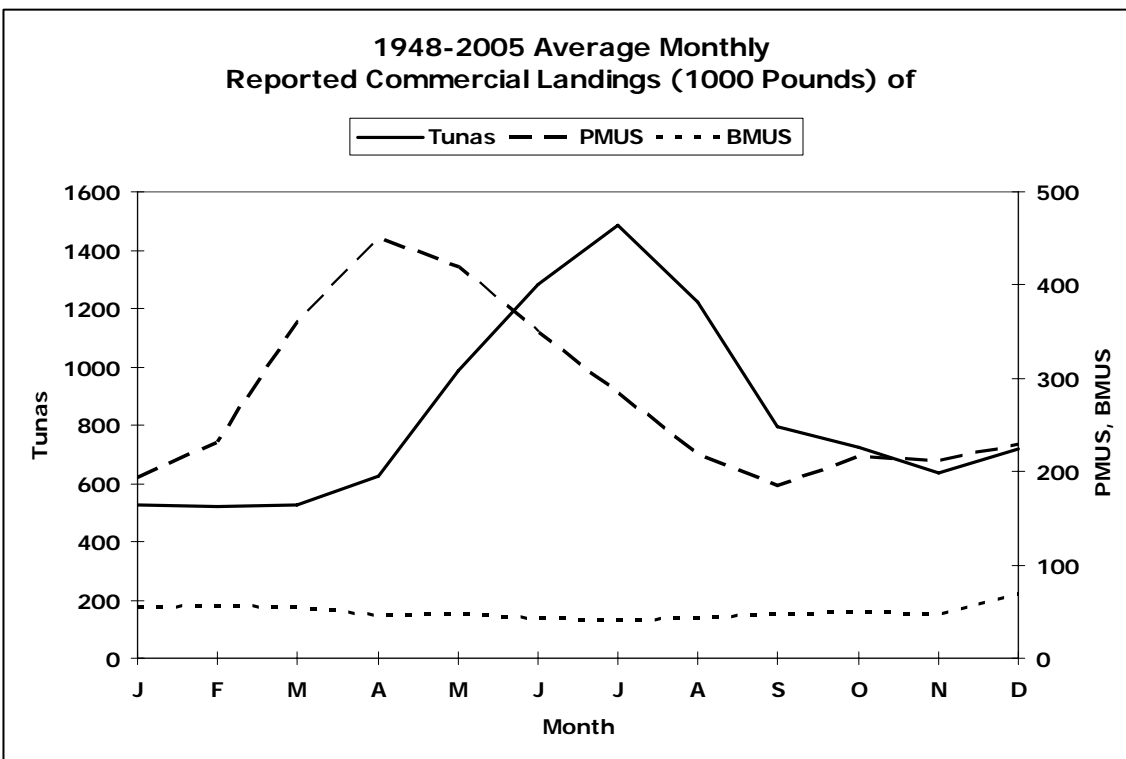


Figure D-2-1

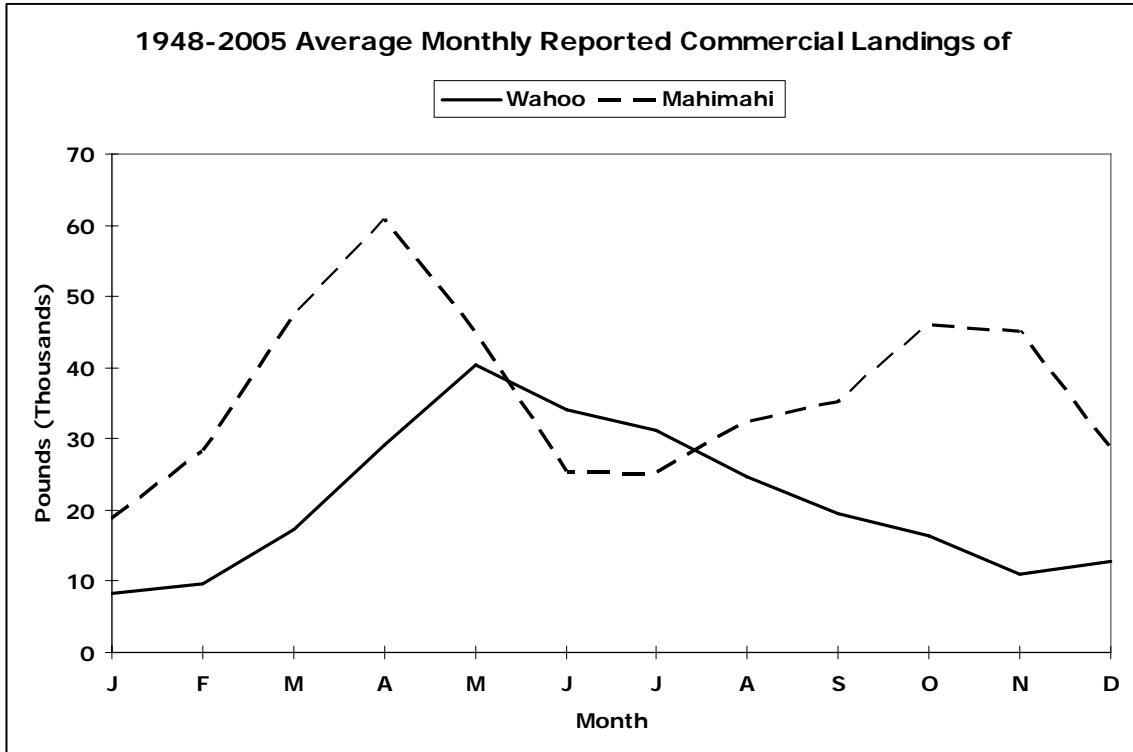


Figure D-2-2

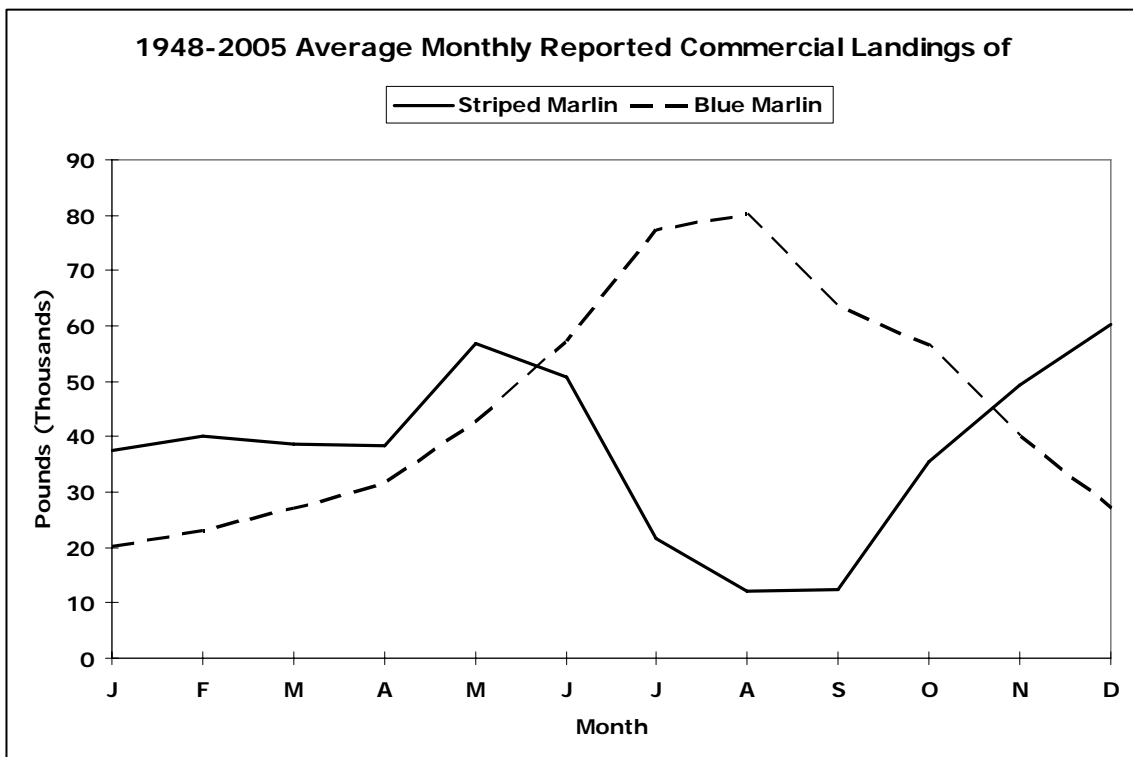


Figure D-2-3

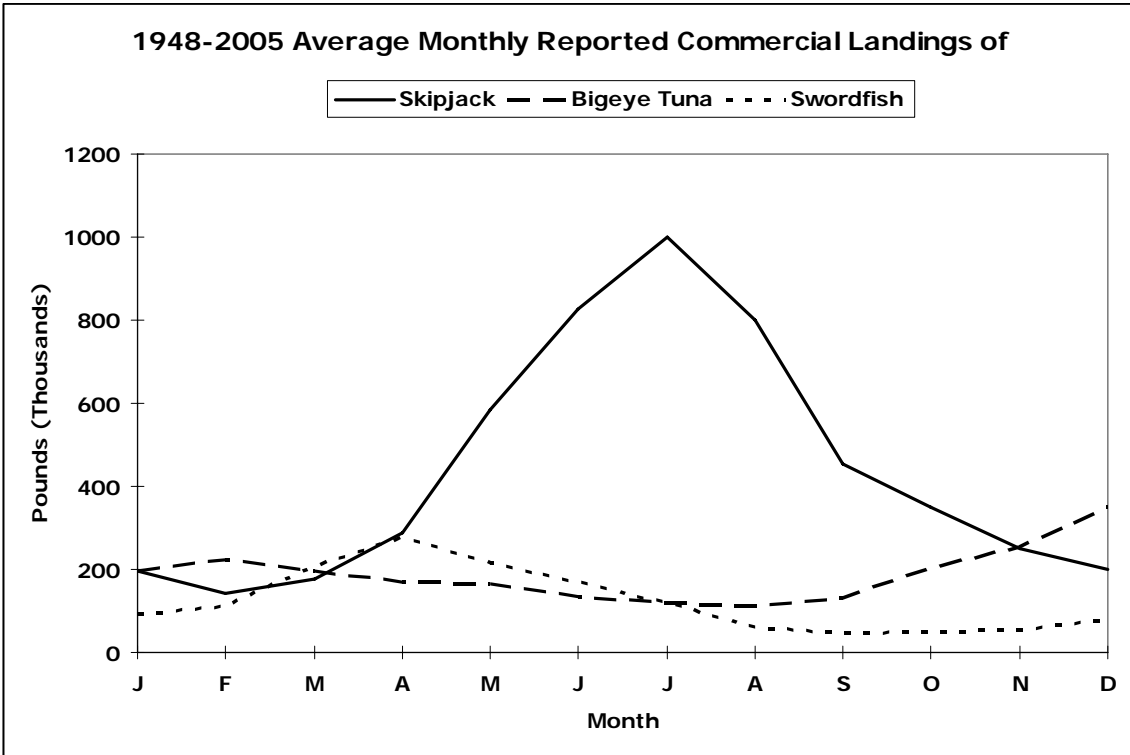


Figure D-2-4

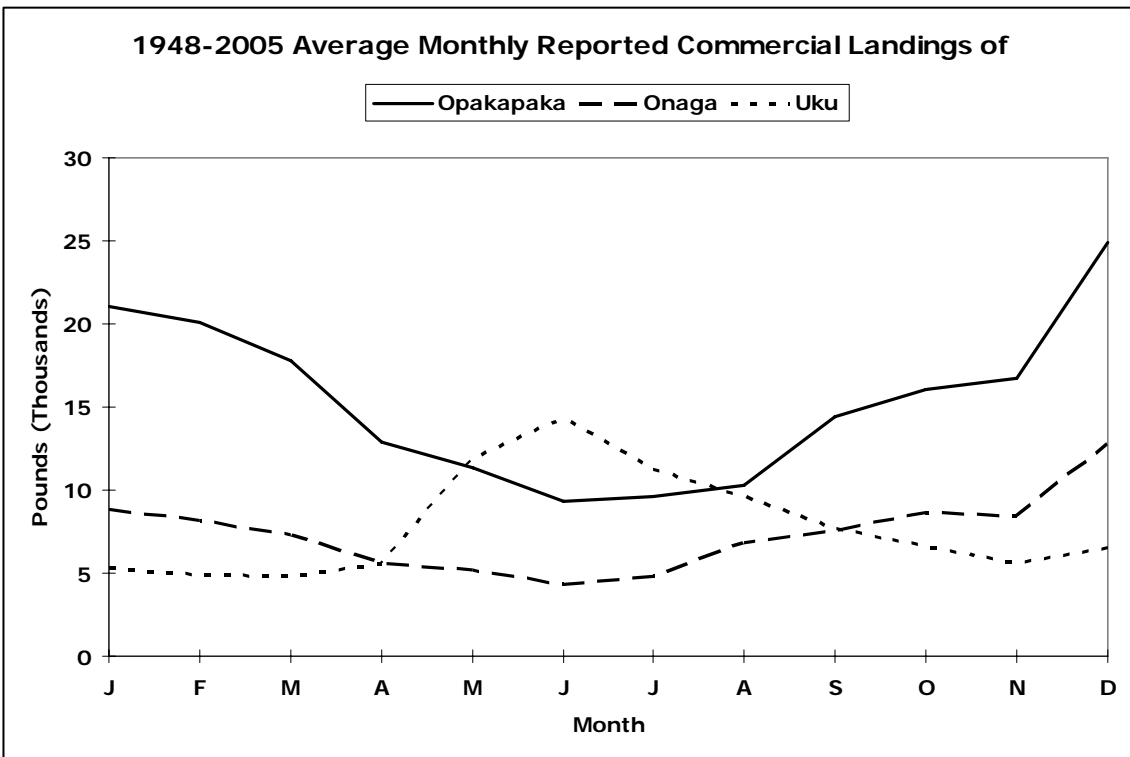


Figure D-2-5

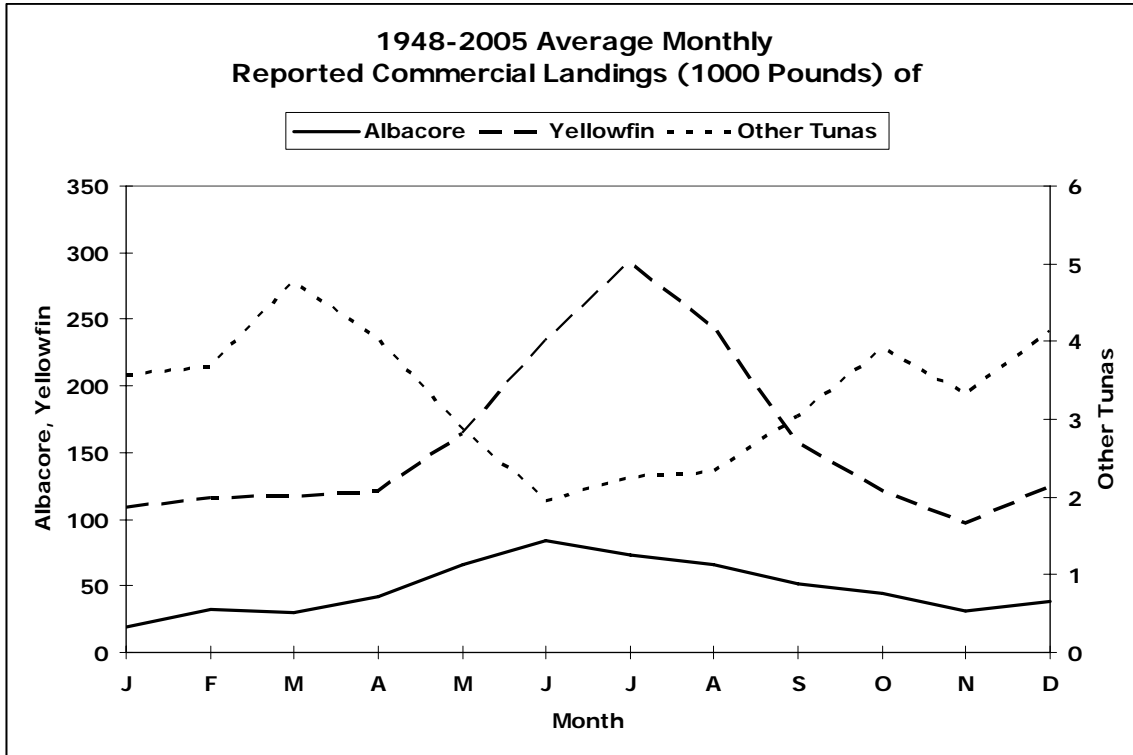


Figure D-2-6

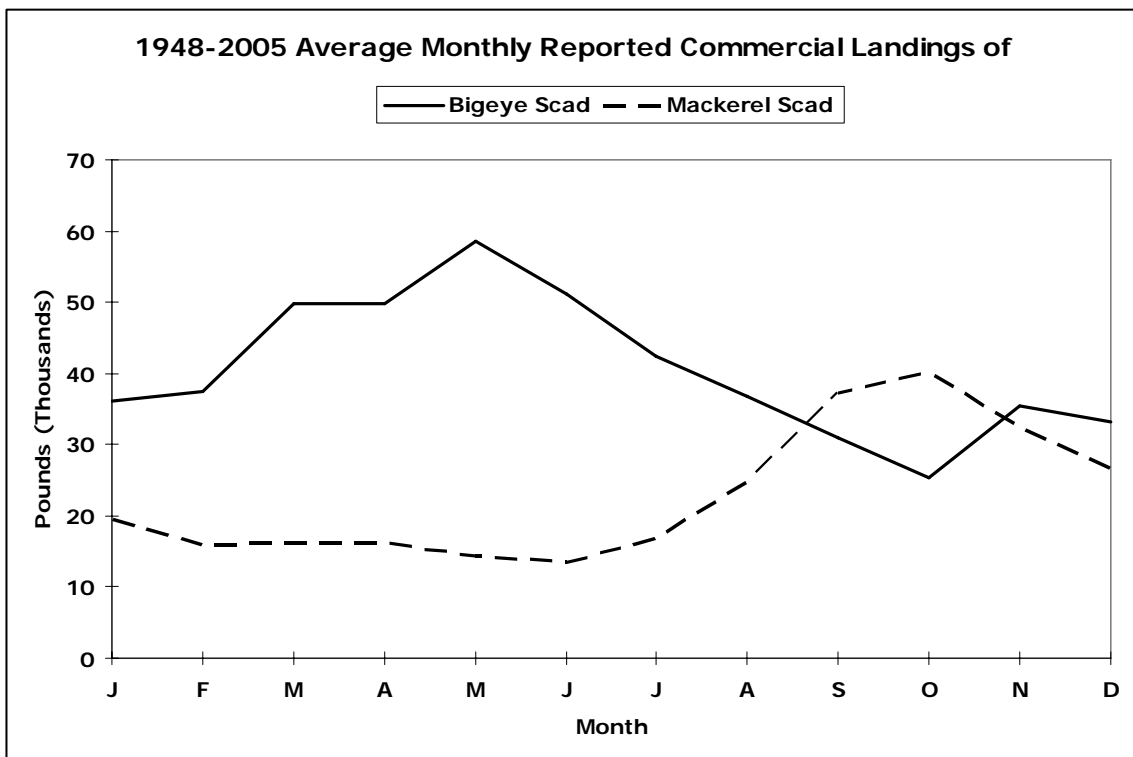


Figure D-2-7

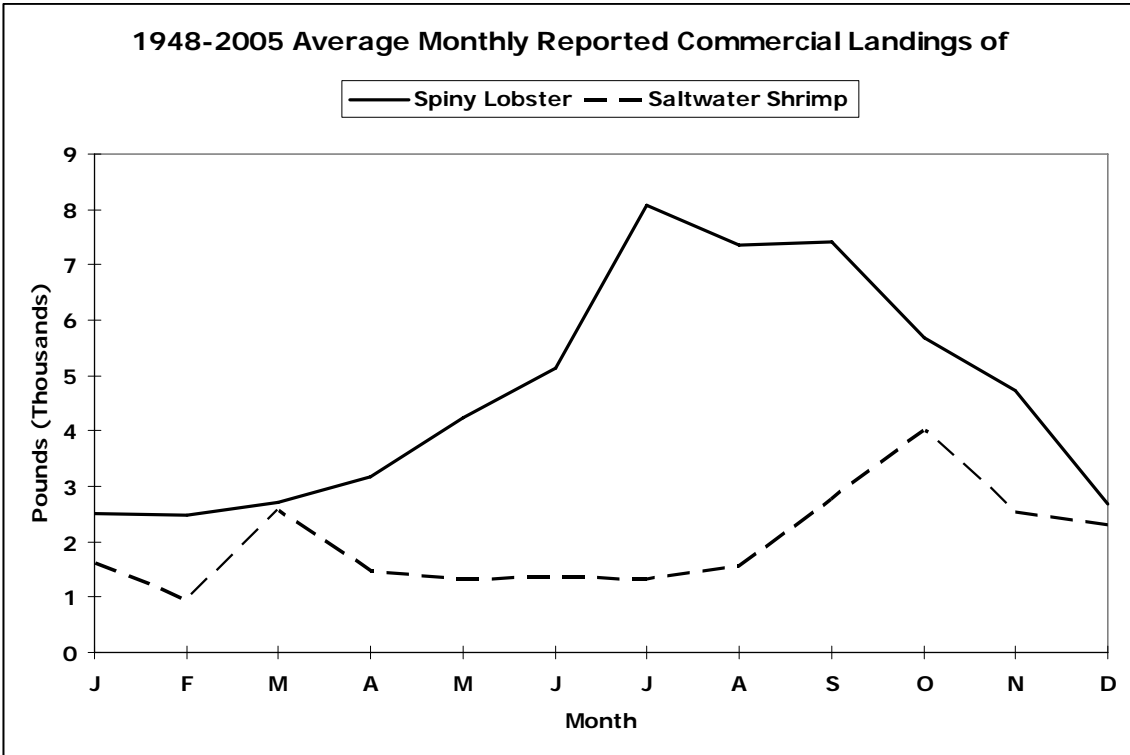


Figure D-2-8

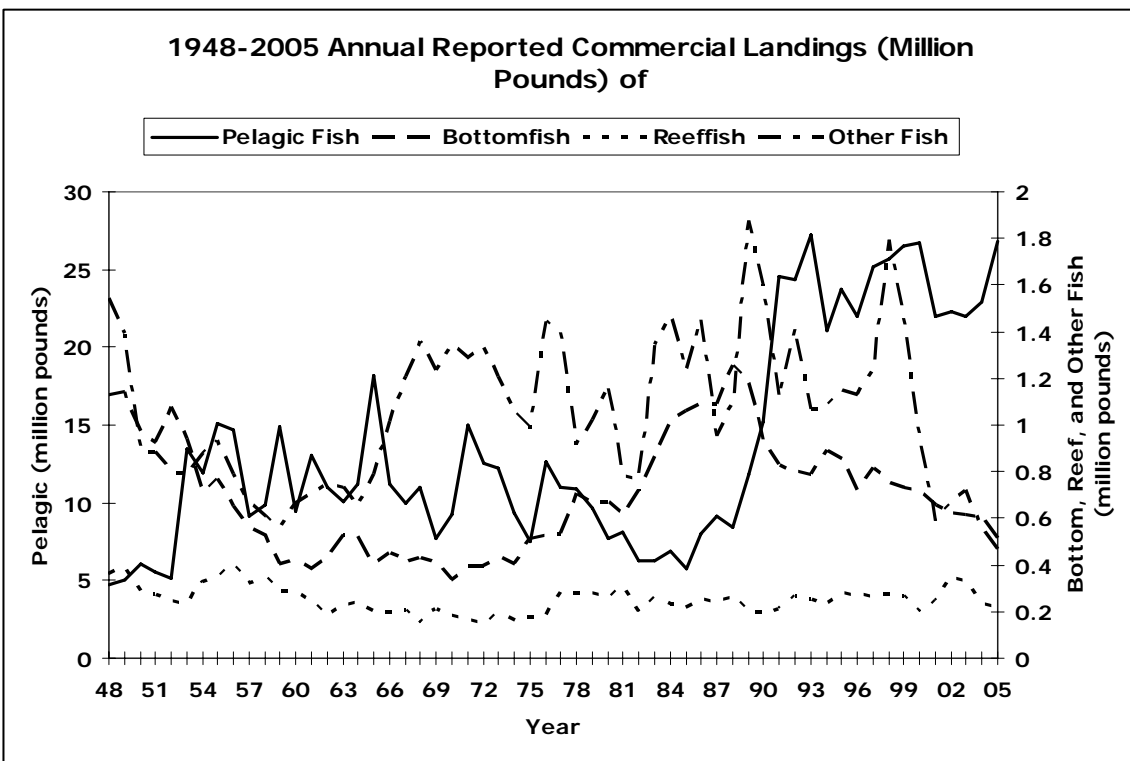


Figure D-3-1

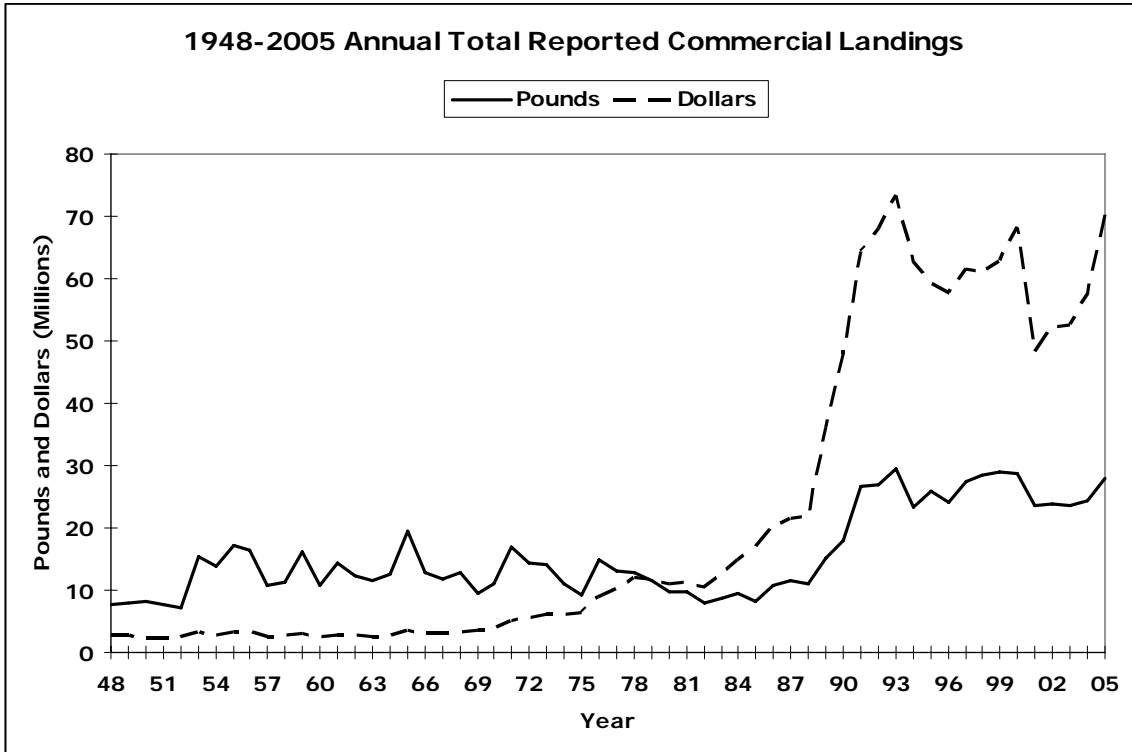


Figure D-3-2

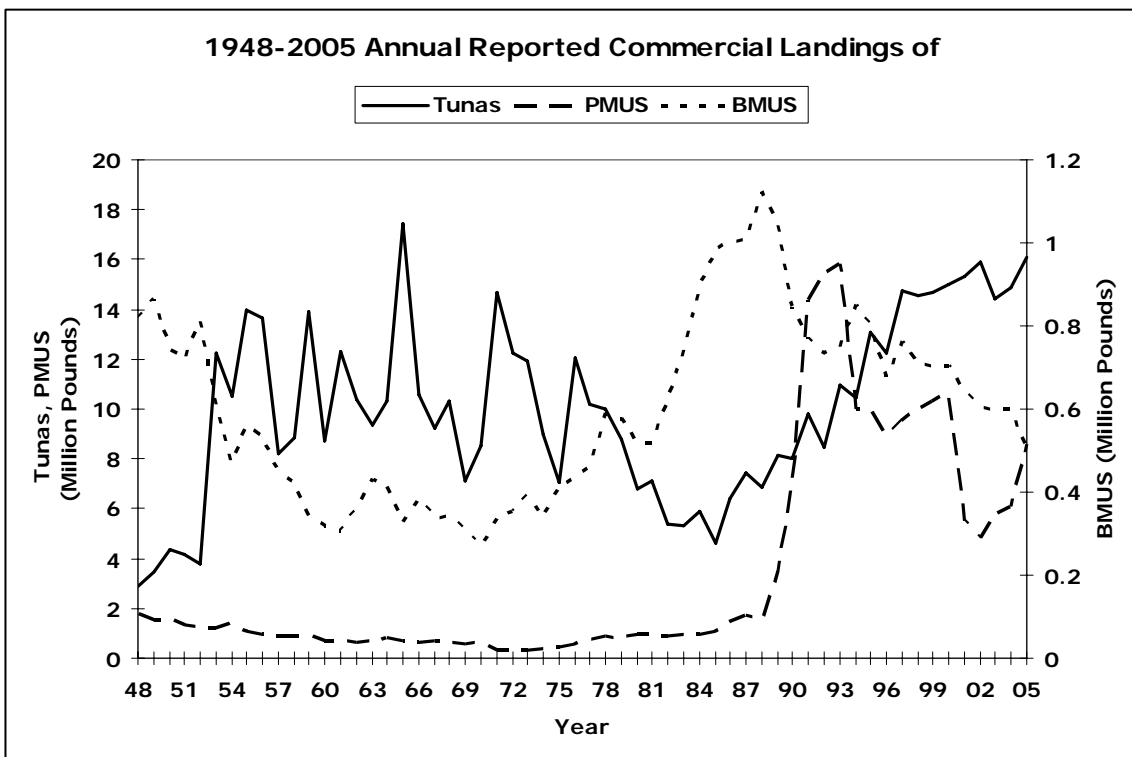


Figure D-3-3

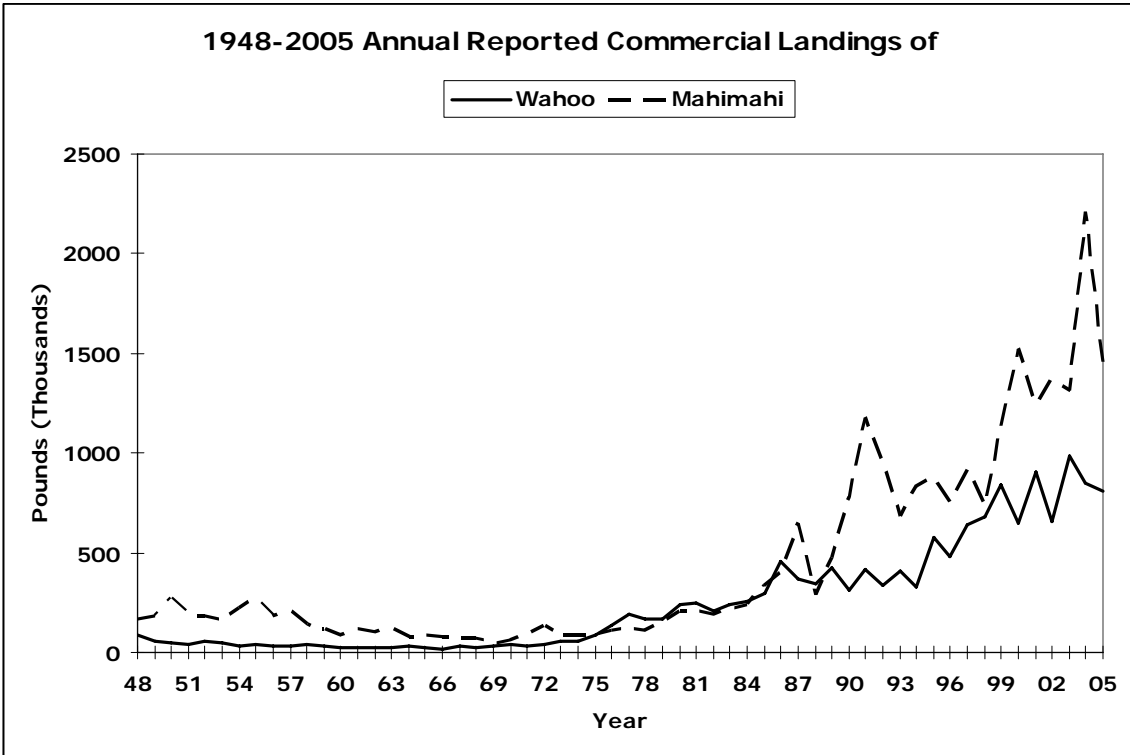


Figure D-3-4

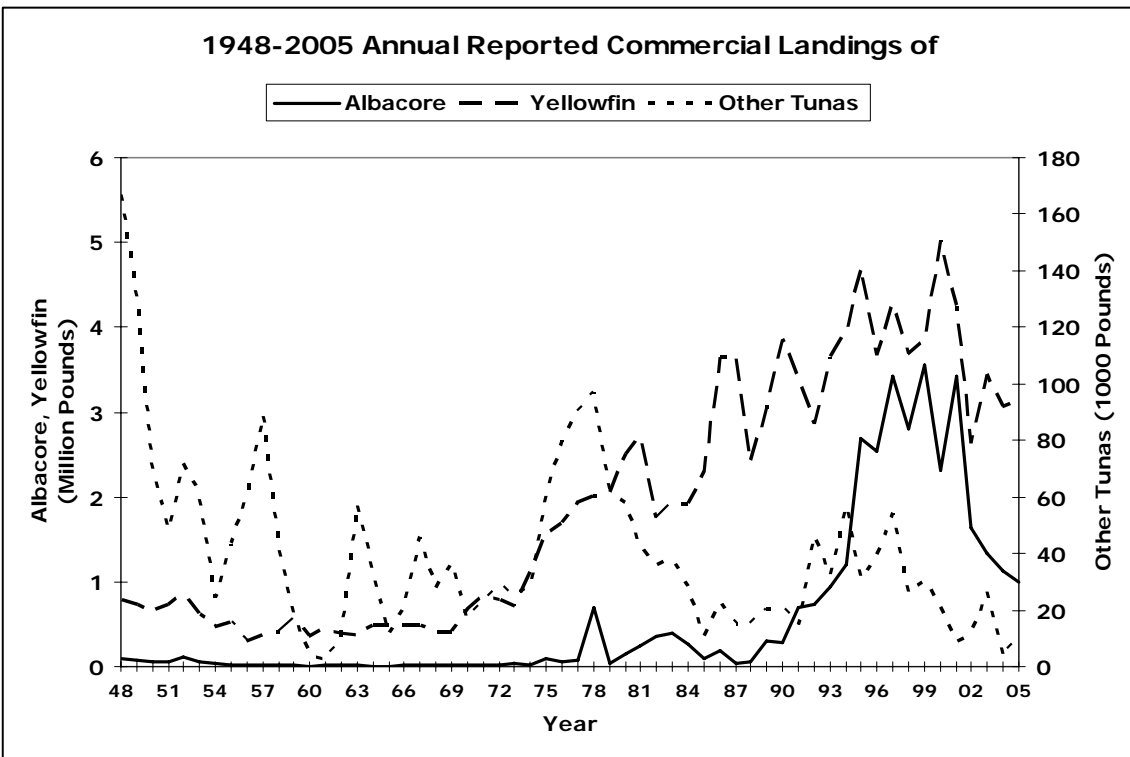


Figure D-3-5

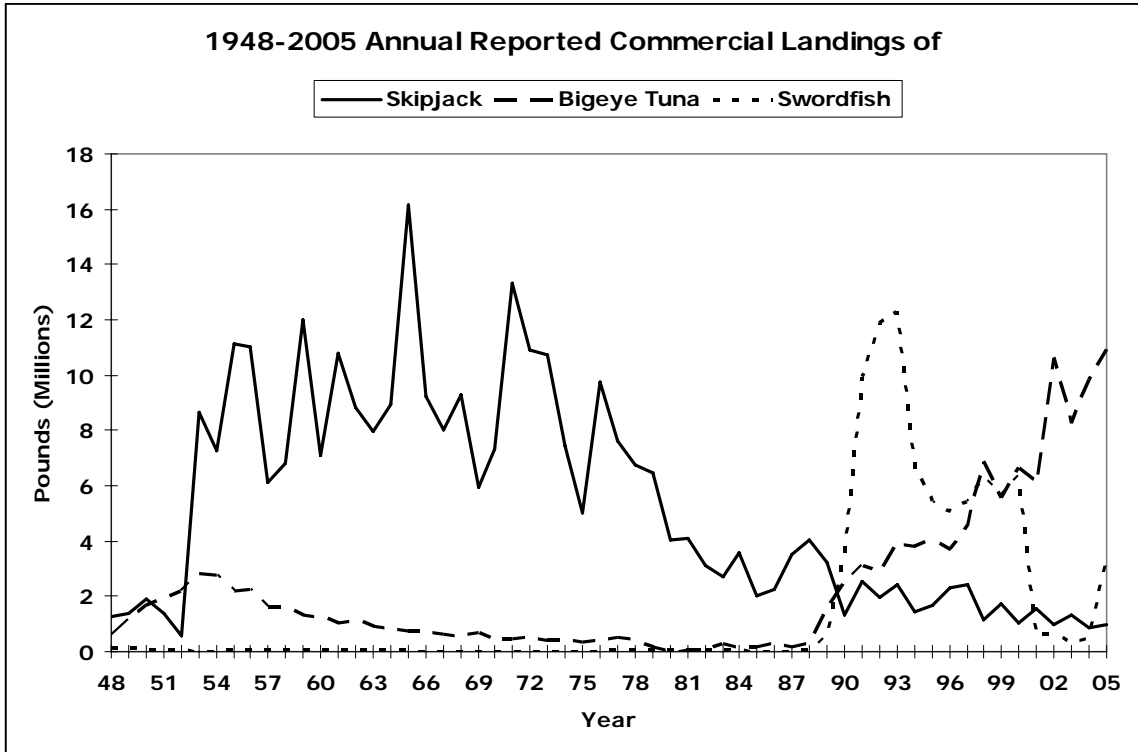


Figure D-3-6

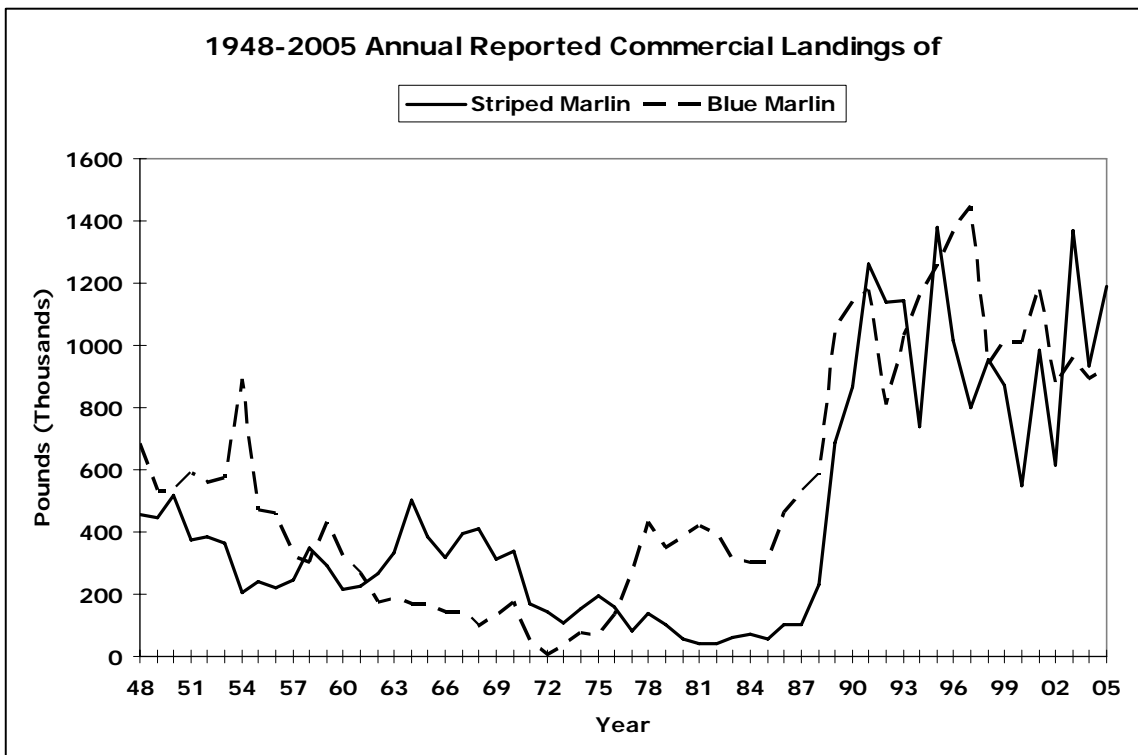


Figure D-3-7

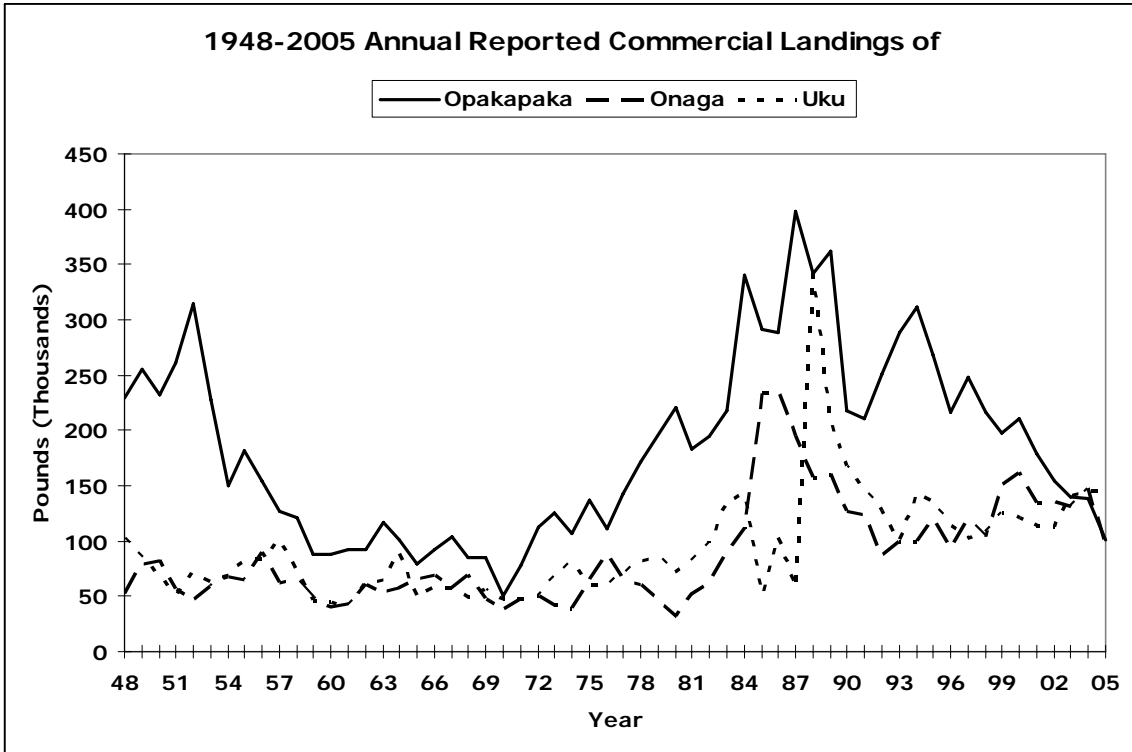


Figure D-3-8

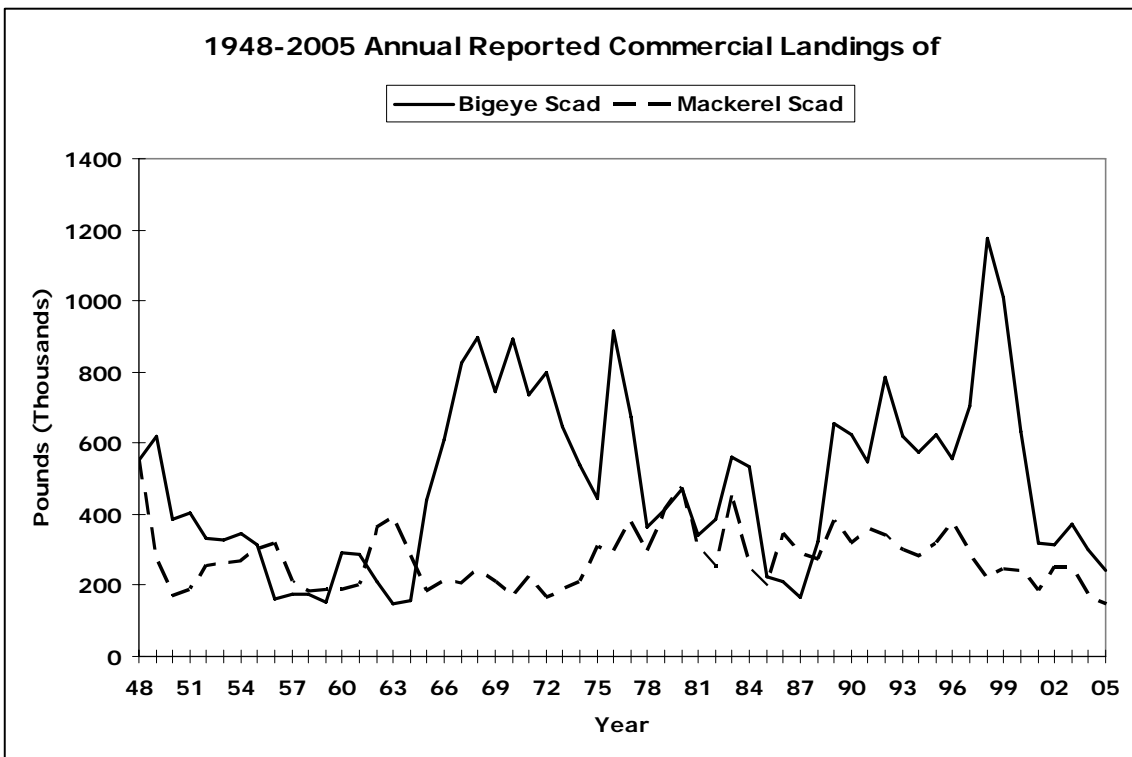


Figure D-3-9

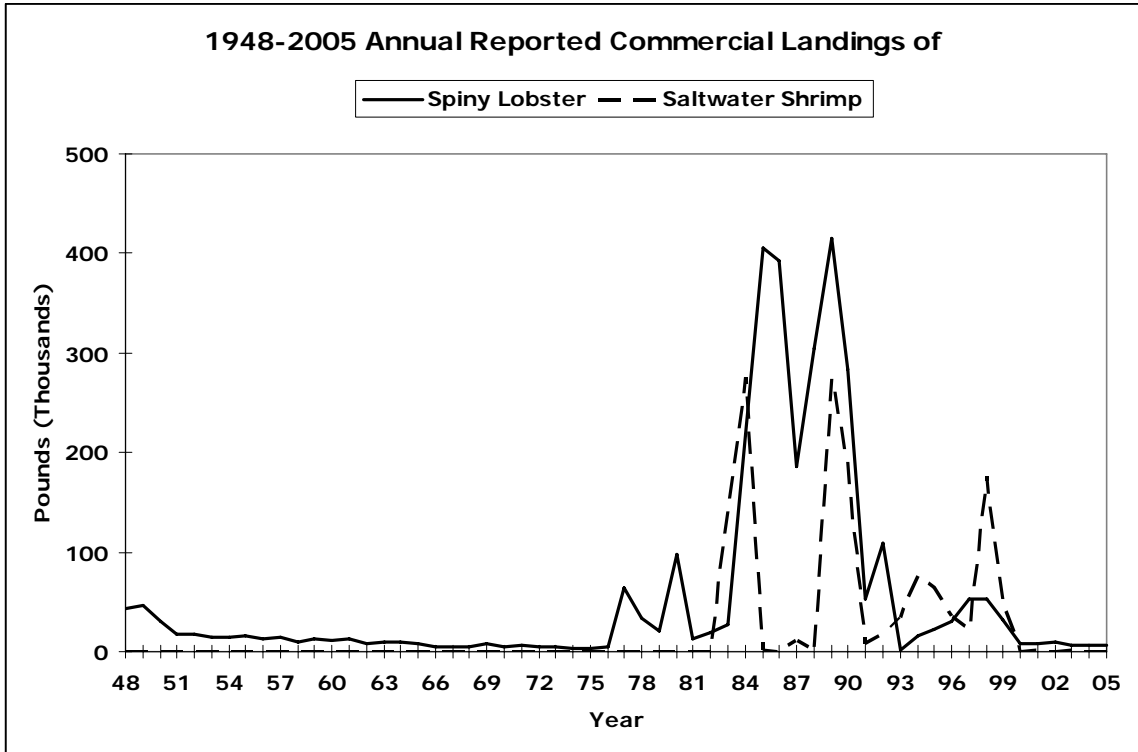


Figure D-3-10

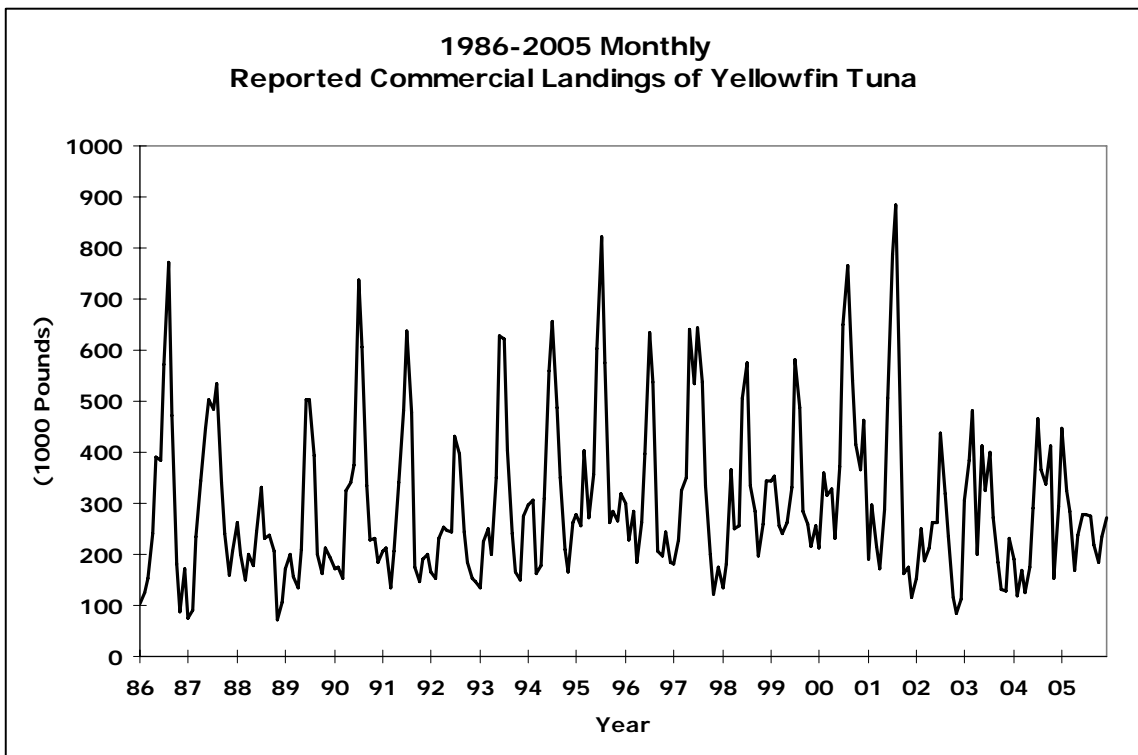


Figure D-4-1

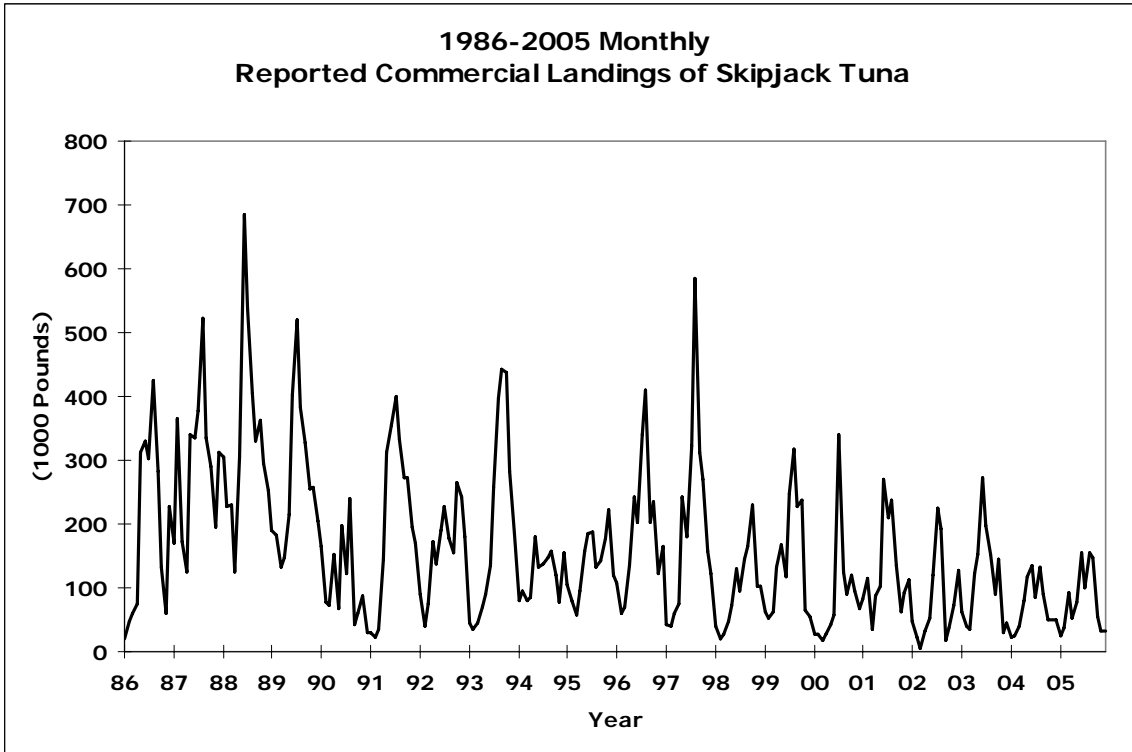


Figure D-4-2

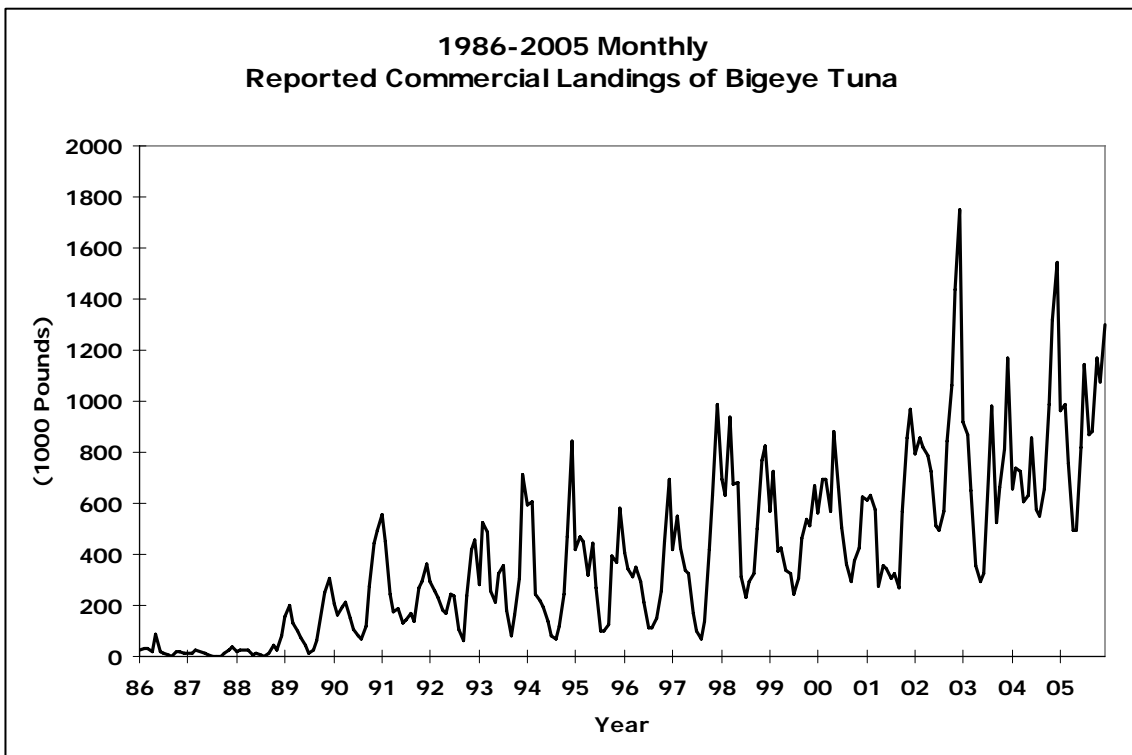


Figure D-4-3

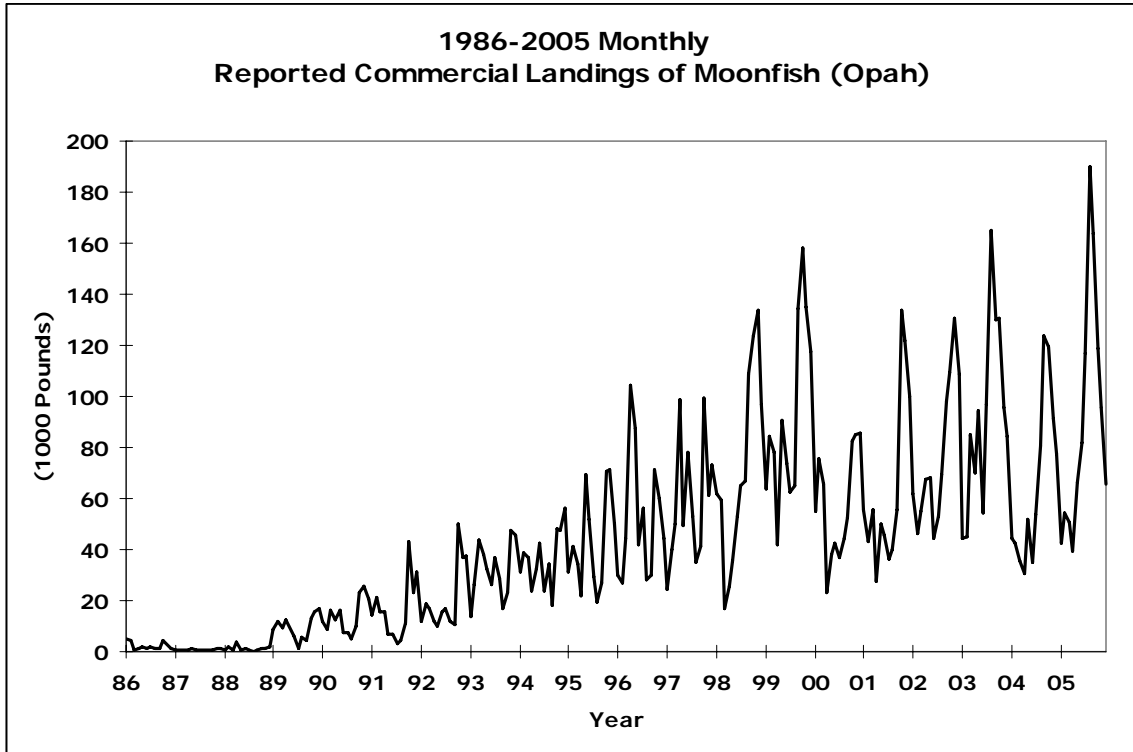


Figure D-4-4

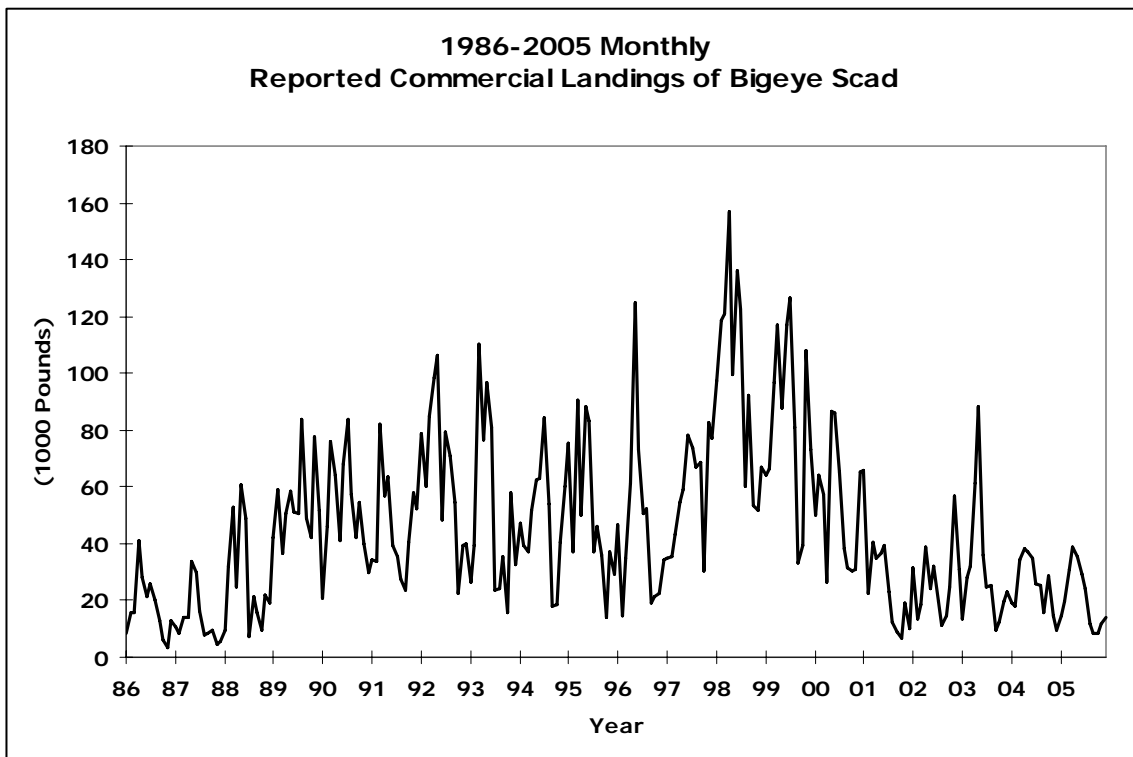


Figure D-4-5

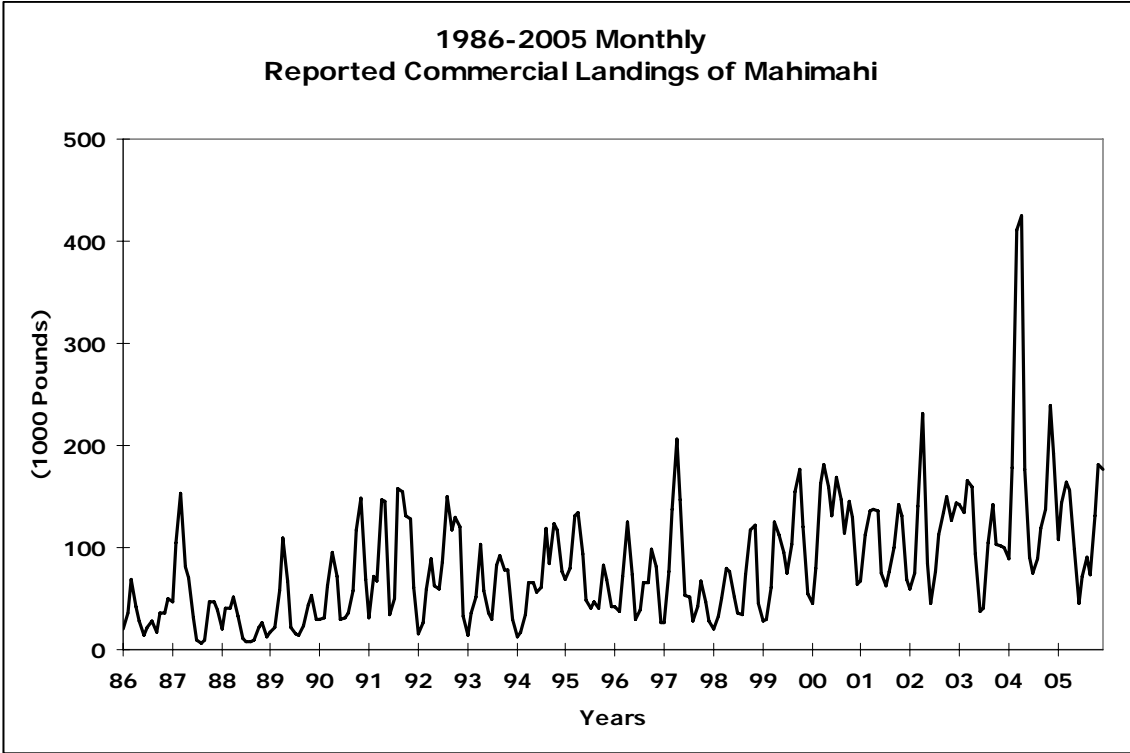


Figure D-4-6

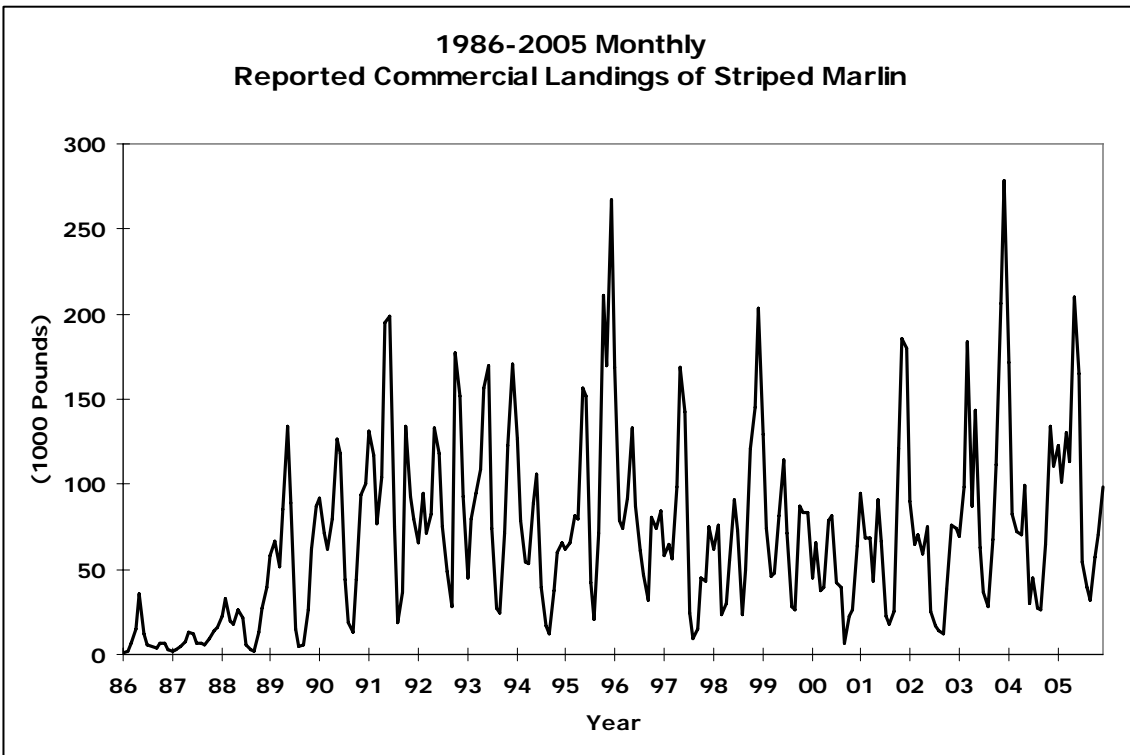


Figure D-4-7

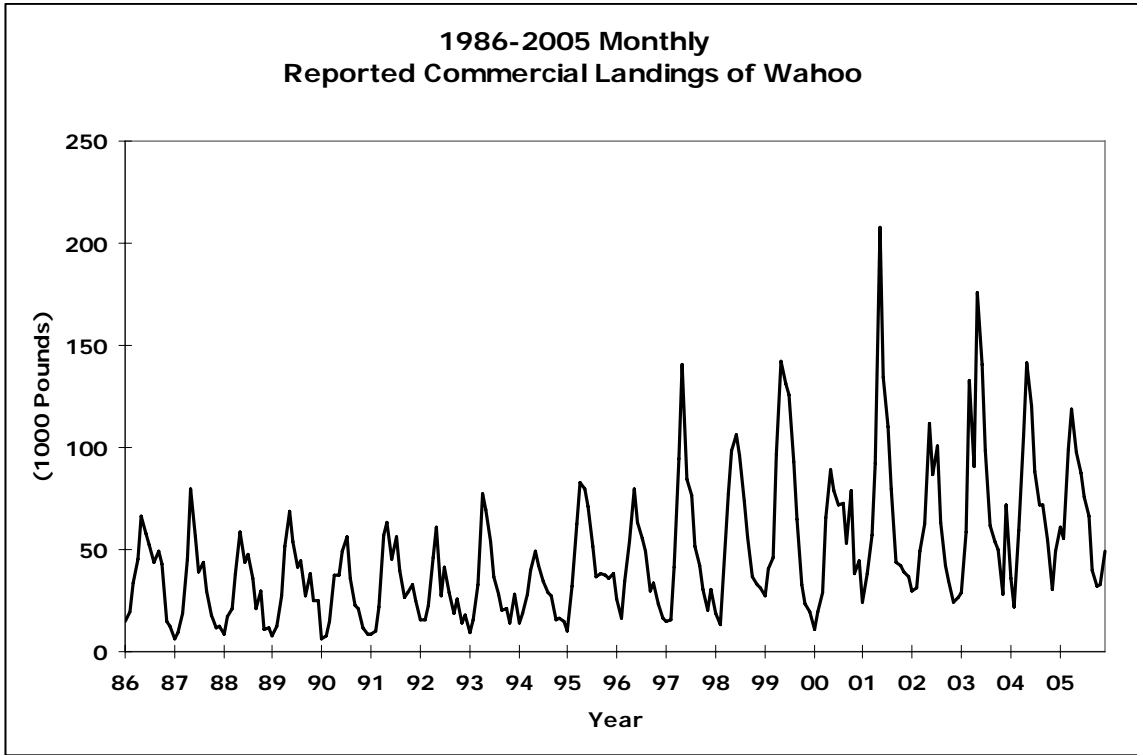


Figure D-4-8

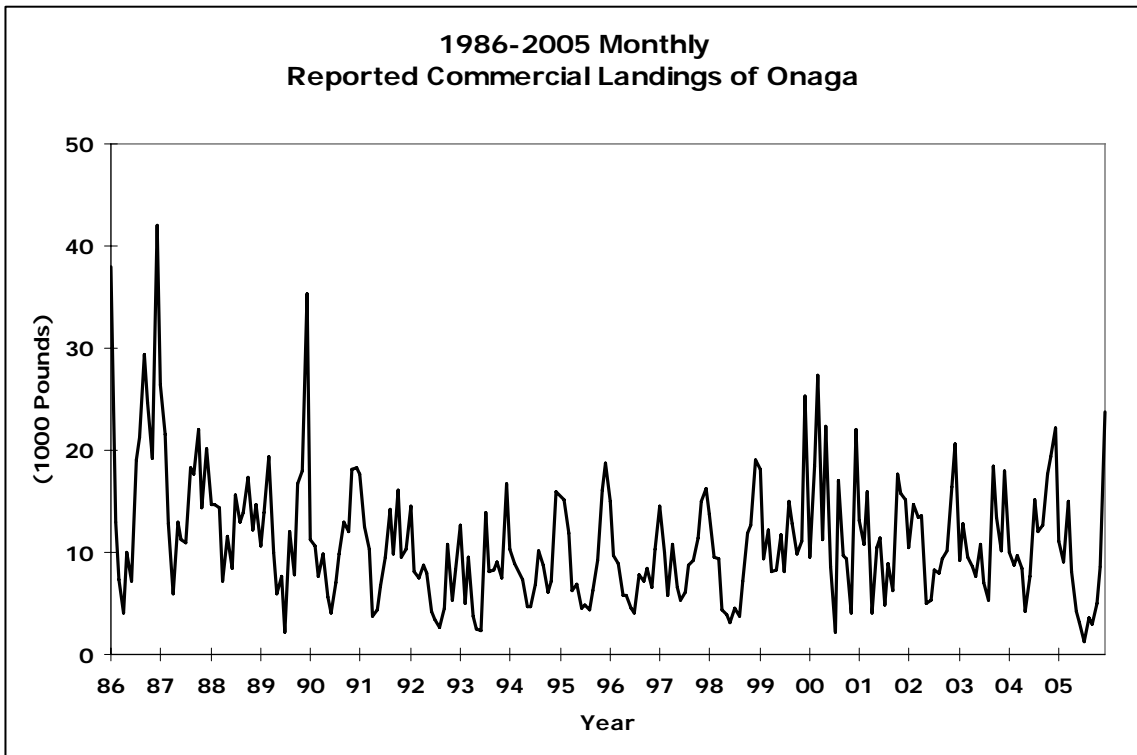


Figure D-4-9

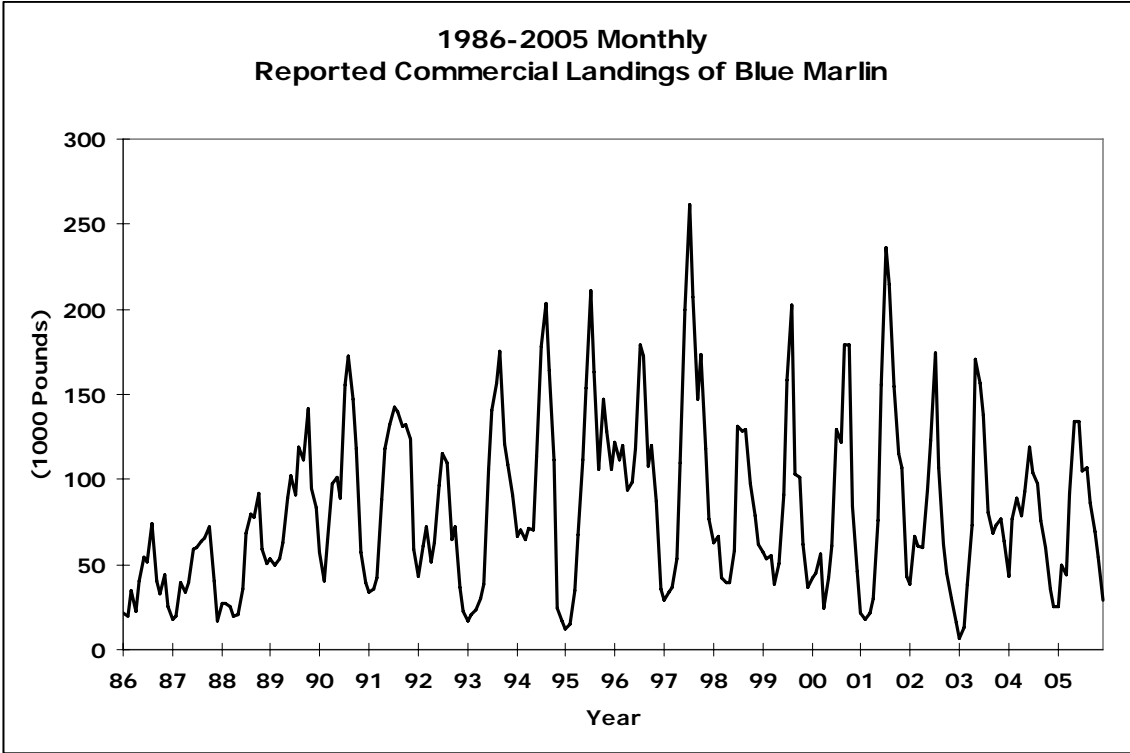


Figure D-4-10

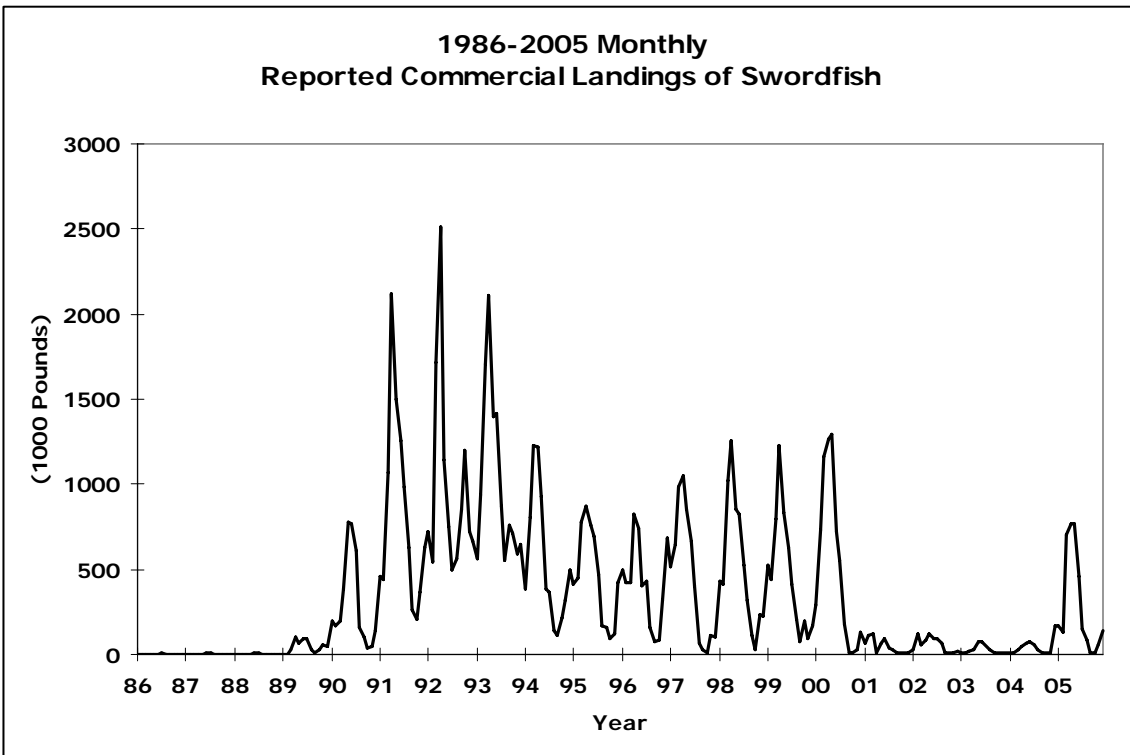


Figure D-4-11

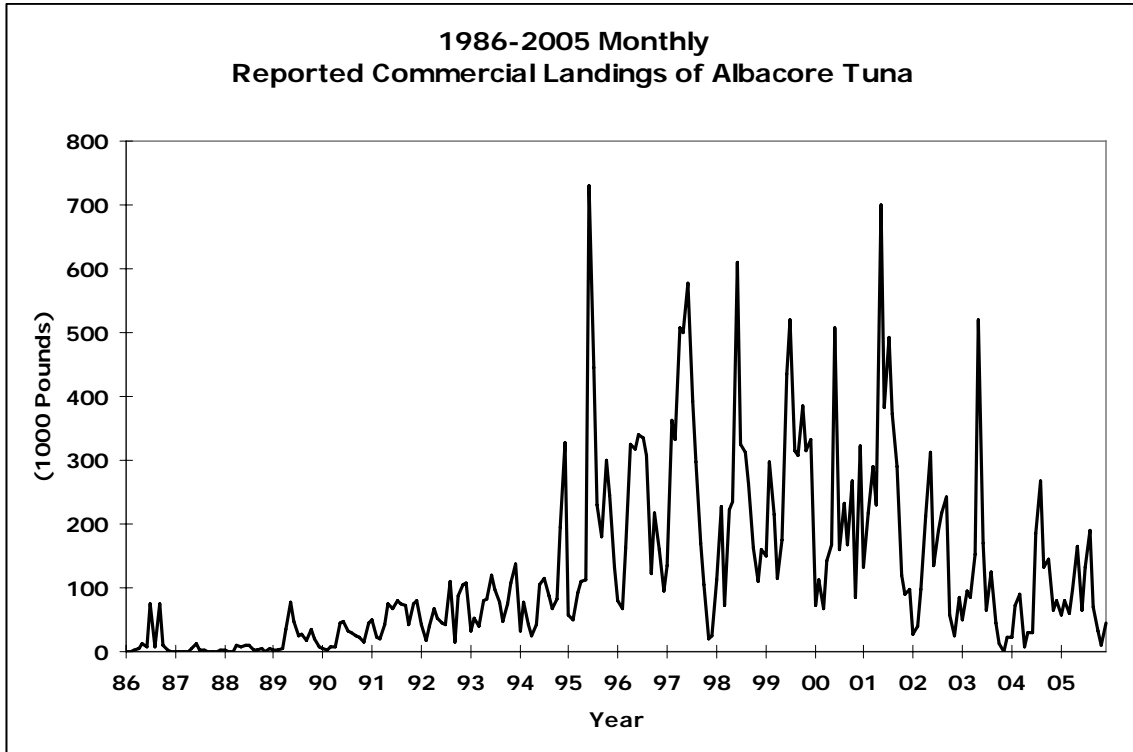


Figure D-4-12

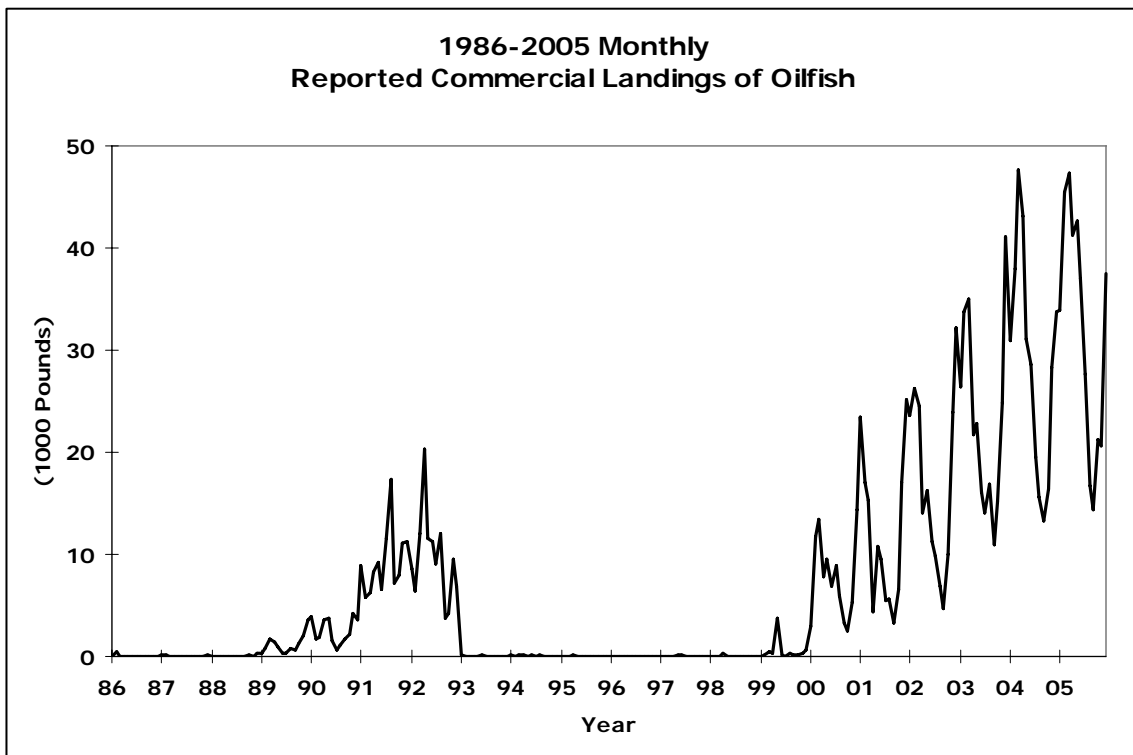


Figure D-4-13

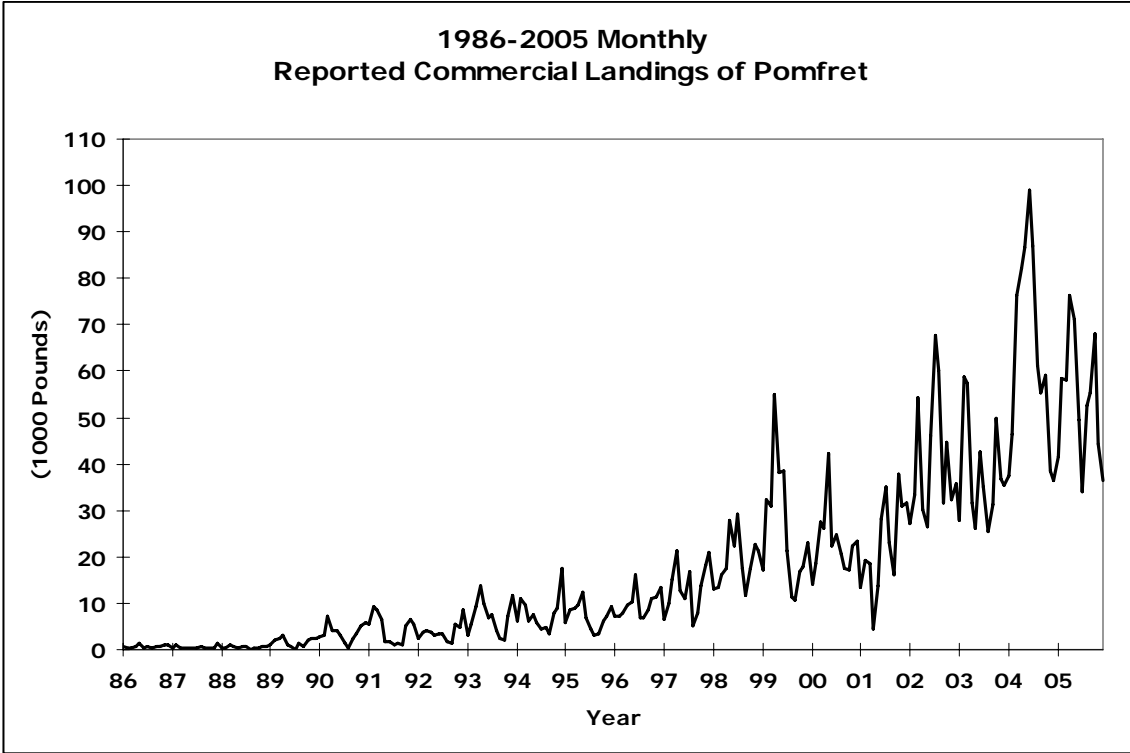


Figure D-4-14