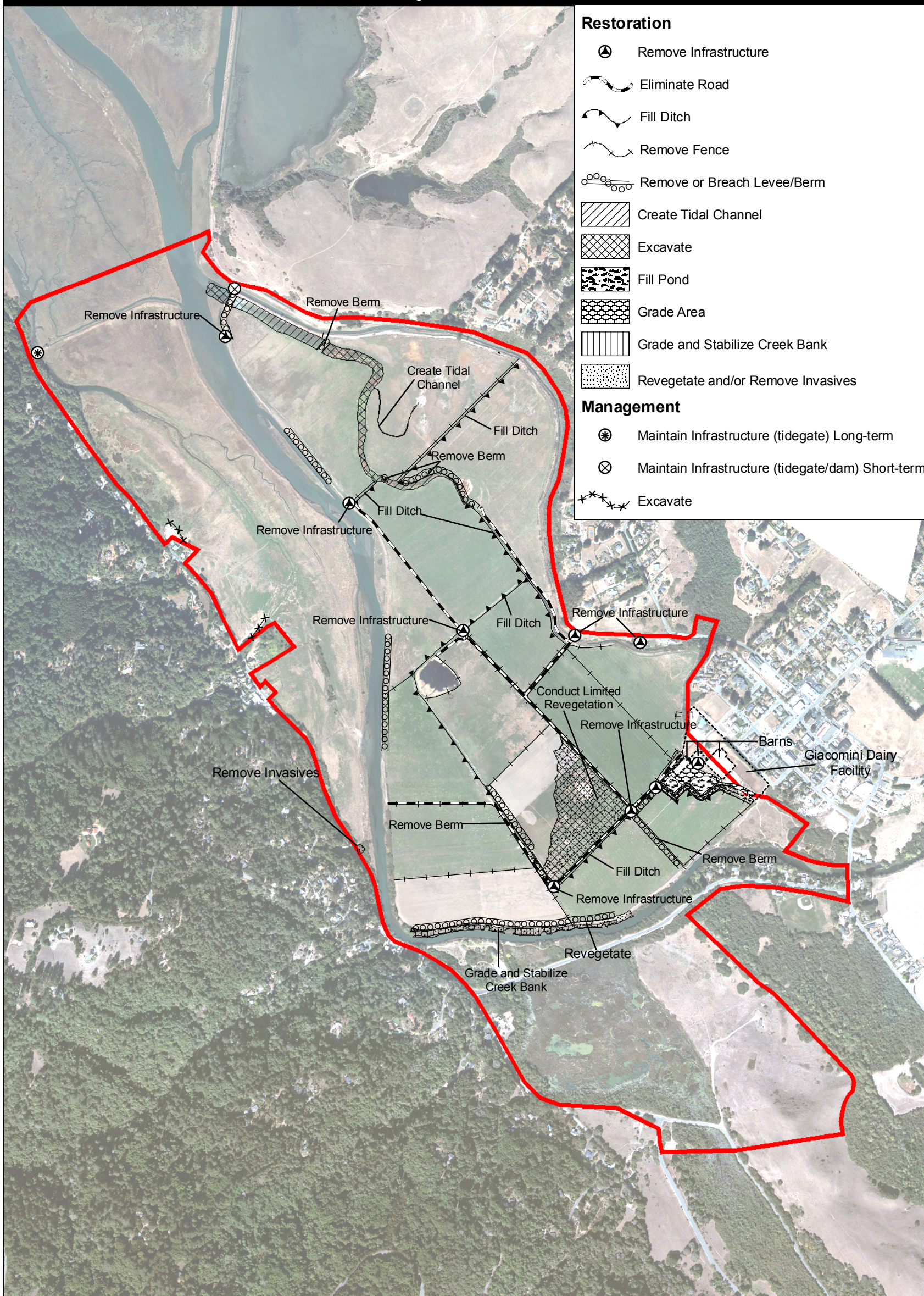


# Alternative A - Restoration and Management

## Giacomini Wetland Restoration Project



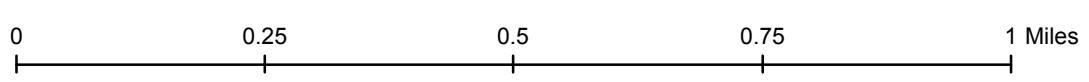
- Restoration**
- Remove Infrastructure
  - Eliminate Road
  - Fill Ditch
  - Remove Fence
  - Remove or Breach Levee/Berm
  - Create Tidal Channel
  - Excavate
  - Fill Pond
  - Grade Area
  - Grade and Stabilize Creek Bank
  - Revegetate and/or Remove Invasives
- Management**
- Maintain Infrastructure (tidegate) Long-term
  - Maintain Infrastructure (tidegate/dam) Short-term
  - Excavate



National Park Service  
 Point Reyes National Seashore/  
 Golden Gate National Recreation Area  
 Marin County, CA



Figure 8



ALTERNATIVE A - LIMITED RESTORATION OF THE GIACOMINI RANCH EAST PASTURE ONLY WITH EXPANDED PUBLIC ACCESS, INCLUDING CULVERTED EARTHEN FILL TRAIL ON EASTERN PERIMETER, INCLUDING ACTIONS COMMON TO ALL ACTION ALTERNATIVE