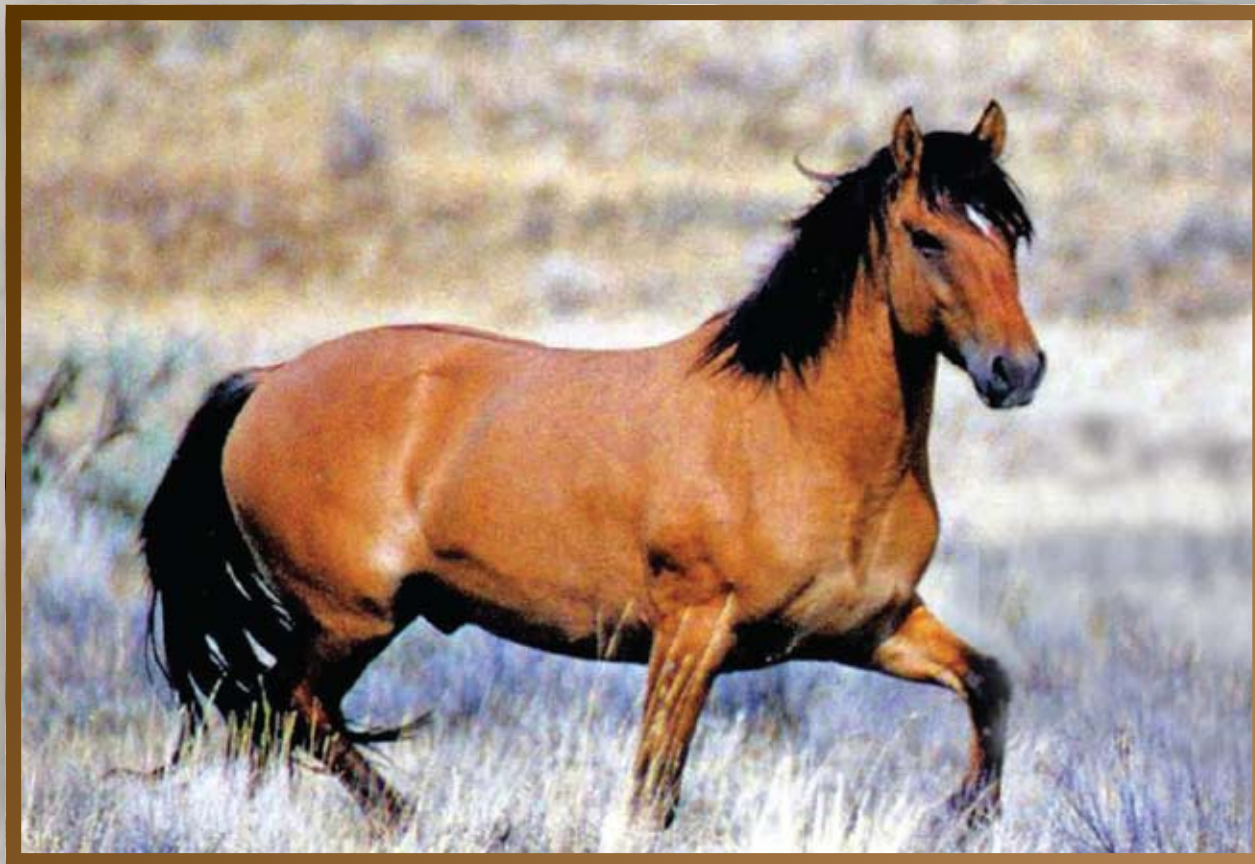


Kiger Mustang Adoption



November 8 - 10, 2007



THE KIGER MUSTANG

Kiger Mustangs are found in two Herd Management Areas (HMA) managed by the Bureau of Land Management (BLM) near Diamond in southeast Oregon. The Kiger HMA covers nearly 27,000 acres of rugged high desert country. The Appropriate Management Level (AML) ranges from 51 to 82 wild horses. A few miles to the east and north is the Riddle Mountain HMA. It covers nearly 28,000 acres with an AML of 33 to 56 horses.

Wild horse numbers increase about 20 percent a year. When populations and range conditions indicate gathering is necessary, excess horses are rounded up and taken to the Burns District Wild Horse Corral Facility where they are prepared for adoption and made available to the public. Gathering is conducted every 3 to 4 years.

Periodically, horses from one herd are transferred to another to maintain genetic diversity. Quality animals with dun factor coloration and Spanish mustang characteristics are returned to the HMAs following the roundups to maintain the core of the breeding herd. There is a high demand for adoption of Kiger Mustangs for use as pleasure and breeding stock. They are noted for their intelligence and stamina.

The Kiger Mustang exhibits physical color characteristics known as the “dun factor” which were also common to many of the horses the Spaniards brought to North America in the 1500’s. Color classifications of the dun factor are: dun, red dun, grulla (mouse gray), buckskin, and variations of these colors.

Markings on horses with the dun factor include dorsal stripes: zebra stripes on the knees and hocks; chest, rib, and arm bars; outlined ears; the top one-third of the ear on its backside darker than body color; fawn coloring on the inside of the ears; bi-colored mane and tail; face masks and cob-webbing on the face. The less white the horse has, the stronger the dun factor. An individual horse having the dun factor may have many, but not all of these markings.

Kiger horses are typically 13 to 15 hands and weigh 750 to 1,000 pounds. They have light to medium bones and small feet. Ear tips are often hooked and females have very fine muzzles.

Seeing the beauty of the Kiger Mustangs in the wild with their classic coloration and markings will add much to your enjoyment of our western heritage and is an experience you will not soon forget.

SCHEDULE OF EVENTS

All activities will be held at Oregon's Wild Horse Corral Facility in Hines, Oregon

Thursday, November 8

- 8 a.m. – 5 p.m. *Wild Horse Viewing*
- 8 a.m. – 3 p.m. *Food Corral (Served by Lion's Club and Pacific Wild Horse Club)*
- 8 a.m. – 5 p.m. *Adopter Registration*
- 10 a.m. – 5 p.m. *Vendor Booths*
- 12 noon – 4:30 p.m. *Demonstrations*
- Ground Driving, By: Kate Beardsley 12-1 p.m.
 - TRAINED MUSTANG DEMO 1-1:15 p.m.
 - Ground Manners/Loading, By: Rick & Kitty Lauman 1:15-3 p.m.
 - Preparing Your Horse for His First Foot Trim, By: Todd Titus 3-4 p.m.
 - TRAINED MUSTANG DEMO 4-4:15 p.m.
 - TRAINED MUSTANG DEMO 4:15-4:30 p.m.

Friday, November 9

- 7 a.m. – 3 p.m. *Food Corral (Served by Lion's Club and Pacific Wild Horse Club)*
- 8 a.m. – 3:15 p.m. *Demonstrations/Lectures*
- Health & Nutrition Issues for Wild Horses, By: Dr. Leon Pielstick 8-9 a.m.
 - Round Pen Basic Training, By: Rick Steed 9-11 a.m.
 - TRAINED MUSTANG DEMO 11:15-11:30 a.m.
 - TRAINED MUSTANG DEMO 11:30-12 noon
 - Ground Driving, By: Kate Beardsley 12-1 p.m.
 - TRAINED MUSTANG DEMO 1-1:15 p.m.
 - Rider Position as it Affects the Horse, By: Rick & Kitty Lauman 1:15-3:15 p.m.

Friday, November 9 continued

- 8 a.m. – 5 p.m. *Wild Horse Viewing*
- 8 a.m. – 5 p.m. *Vendor Booths*
- 8 a.m. – 5 p.m. *Adopter Registration*

Saturday, November 10

- 7 a.m. – 3 p.m. *Food Corral (Served by Lion's Club and Pacific Wild Horse Club)*
- 8 – 10:30 a.m. *Demonstrations*
- Round Pen Advanced Training, By: Rick Steed 8-10 a.m.
 - TRAINED MUSTANG DEMO 10-10:15 a.m.
 - TRAINED MUSTANG DEMO 10:15-10:30 a.m.
- 8 – 11:30 a.m. *Wild Horse Viewing*
- 8 – 11:30 a.m. *Adopter Registration*
- 8 a.m. – 5 p.m. *Vendor Booths*

12 noon

ORAL COMPETITIVE BID ADOPTION PROCESS

- The ENTIRE oral bid process (all rounds of bidding) will be completed before ANY fees are collected or adoption agreements filled out
 - Following the oral bid process, those interested may complete a walk-up adoption for other animals located at the corral facility (Kiger and Riddle horses are NOT available for walk-up adoption)
- 2 p.m. *Kiger/Riddle Horse Loading for successful adopters*

Sunday, November 11

- 7:30 a.m. *Kiger/Riddle Horse Loading for successful adopters*
- 9 a.m. – 12 noon *Walk up adoption for other animals at the Corrals (Kigers and Riddle horses are NOT available for walk-up)*

SELECTIONS/COMPETITIVE BID/LOADING PROCEDURE

The Kiger Adoption will be conducted using an ORAL COMPETITIVE BIDDING METHOD to establish adoption fees and determine the selection of horses.

Bidding will start with the base adoption fee of \$125. If there is only one bidder, the animal will be adopted for \$125. When there are several bidders, the animal will be adopted to the high bidder at the bid price. The advantage of the competitive bidding process is that all animals are available to each adopter and the adopter has full control over which animal they select.

The procedure is as follows:

- Competitive Bid Process begins Saturday at 12:00 noon sharp.
- An auctioneer will solicit bids from adopters who have registered and received a bidder's number (bid card).
- During Round One, bidding will start with Pen #1 and continue in order by pen number. ***Animals displayed in this catalog are not listed by pen number; however, a current inventory by pen number is inserted into the catalog, allowing adopters to cross reference the tag number of the animal(s) displayed with the same tag number listed on the inventory sheet to find which pen their animal(s) is located.
- During Round Two, adopters may bid on horses that were not selected in Round One. Bidding will start with Pen #1 and continue in order by pen number.
- The auctioneer will announce the horse number for which he is soliciting bids. At the conclusion of the bidding for each animal, he will announce the successful bidder's number and the price bid. THE AUCTIONEER'S WORD IS FINAL.
- ALL bidding will be completed before any fees are collected or adoption agreements filled out. Once the ENTIRE bidding process is over, successful adopters may go to the Adoption Office and complete adoption paperwork, pay fees, etc. BLM will make every effort to first complete paperwork for adopters loading and leaving Saturday.
- All adopters are required to obtain a brand inspection. This will occur in the Adoption Office, once the adoption agreement has been completed and fees paid. There is no additional fee for the brand inspection.
- Out-of-state adopters will need to obtain a health certificate from a veterinarian before leaving with the adopted animal(s). This will also occur at the Adoption Office, once the adoption agreement has been completed and fees paid. The health certificate fee is \$25 and must be paid separate from the adoption fee and at the time of service.
- Fees can be paid in cash, by check, or by credit card. Remember, adoption and health certificate fees (for out-of-state adopters) must be paid separately.
- Adoption agreements must be signed and fees paid prior to horse loading at the Wild Horse Corral Facility.
- Adopters must present adoption agreements and load tickets to the corral loading attendant.
- Kiger and Riddle horses ONLY will be loaded on Saturday, November 10. Other adopted horses will be loaded beginning on Sunday, November 11. Loading will be done on a first come first serve basis each day.

Horse Number - 8115

2002 Dun Stallion

Riddle Mtn. HMA



Horse Number - 8116

2005 Grulla Stallion

Riddle Mtn. HMA



Horse Number - 8117

1990 Gray Stallion

Riddle Mtn. HMA



Horse Number - 8118

2005 Dun Stallion

Riddle Mtn. HMA



Horse Number - 8120

2006 Bay Stallion

Riddle Mtn. HMA



Horse Number - 8124

2006 Dun Mare

Riddle Mtn. HMA



Horse Number - 8126

2004 Dun Mare

Riddle Mtn. HMA



Horse Number - 8127

2005 Dun Mare

Riddle Mtn. HMA





Horse Number - 8128

2004 Dun Mare

Riddle Mtn. HMA



Horse Number - 8129

2004 Dun Mare

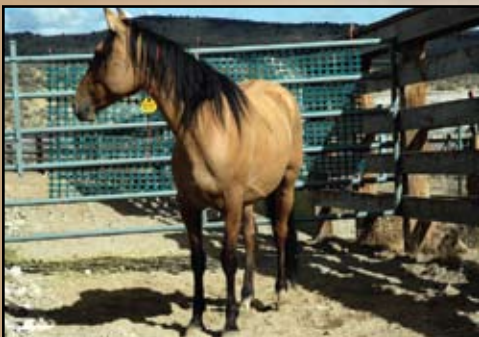
Riddle Mtn. HMA



Horse Number - 8130

2001 Grulla Mare

Riddle Mtn. HMA



Horse Number - 8131

2001 Dun Mare

Riddle Mtn. HMA



Horse Number - 8132

2005 Dun Mare

Riddle Mtn. HMA



Horse Number - 8133

2005 Dun Mare

Riddle Mtn. HMA



Horse Number - 8134

2004 Grulla Mare

Riddle Mtn. HMA



Horse Number - 8135

2006 Black Mare

Riddle Mtn. HMA

Horse Number - 8137

2006 Grulla Stallion

Riddle Mtn. HMA



Horse Number - 8138

2007 Grulla Colt

Riddle Mtn. HMA



Horse Number - 8139

2007 Dun Colt

Riddle Mtn. HMA



Horse Number - 8140

2007 Dun Colt

Riddle Mtn. HMA



Horse Number - 8122

2006 Dun Stallion

Riddle Mtn. HMA



Horse Number - 8212

2006 Dun Stallion

Kiger HMA



Horse Number - 8256

2002 Grulla Mare

Kiger HMA





Horse Number - 8141

2007 Dun Colt

Riddle Mtn. HMA



Horse Number - 8142

2007 Dun Filly

Riddle Mtn. HMA



Horse Number - 8143

2007 Dun Filly

Riddle Mtn. HMA



Horse Number - 8144

2007 Dun Colt

Riddle Mtn. HMA



Horse Number - 8145

2007 Grulla Filly

Riddle Mtn. HMA



Horse Number - 8146

2007 Dun Filly

Riddle Mtn. HMA



Horse Number - 8147

2007 Dun Colt

Riddle Mtn. HMA



Horse Number - 8148

2007 Grulla Filly

Riddle Mtn. HMA

Horse Number - 8149

2007 Grulla Filly

Riddle Mtn. HMA



Horse Number - 8150

2007 Dun Filly

Riddle Mtn. HMA



Horse Number - 8151

2007 Dun Colt

Riddle Mtn. HMA



Horse Number - 8152

2004 Dun Mare

Riddle Mtn. HMA



Horse Number - 8153

2004 Dun Mare

Riddle Mtn. HMA



Horse Number - 8154

2006 Dun Mare

Riddle Mtn. HMA



Horse Number - 8156

2006 Dun Mare

Riddle Mtn. HMA



Horse Number - 8157

2006 Dun Mare

Riddle Mtn. HMA





Horse Number - 8158

2006 Dun Mare

Riddle Mtn. HMA



Horse Number - 8161

2005 Dun Stallion

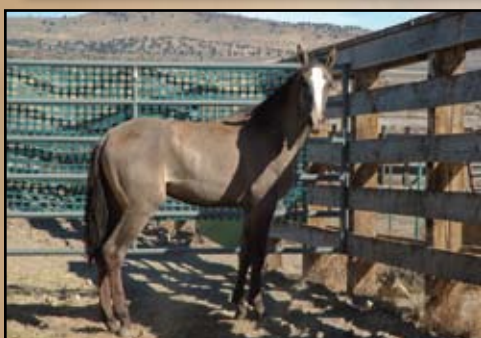
Riddle Mtn. HMA



Horse Number - 8162

2006 Bay Stallion

Riddle Mtn. HMA



Horse Number - 8164

2006 Grulla Stallion

Riddle Mtn. HMA



Horse Number - 8166

2006 Black Stallion

Riddle Mtn. HMA



Horse Number - 8167

2007 Dun Colt

Riddle Mtn. HMA



Horse Number - 8168

2007 Dun Filly

Riddle Mtn. HMA



Horse Number - 8169

2007 Brown Filly

Riddle Mtn. HMA

**Horse Number - 8170
and 8172**

2005 Dun Mare

2007 Dun Filly

Kiger HMA



Horse Number - 8172

2006 Dun Stallion

Kiger HMA



Horse Number - 8173

2006 Dun Stallion

Kiger HMA



Horse Number - 8174

2006 Dun Stallion

Kiger HMA



Horse Number - 8176

2005 Dun Stallion

Kiger HMA



Horse Number - 8177

2005 Dun Stallion

Kiger HMA



Horse Number - 8179

2004 Dun Stallion

Kiger HMA





Horse Number - 8180

2000 Dun Stallion

Kiger HMA



Horse Number - 8183

2004 Dun Stallion

Kiger HMA



Horse Number - 8184

2004 Brown Mare

Kiger HMA



Horse Number - 8185

2005 Grulla Mare

Kiger HMA



Horse Number - 8186

2005 Dun Mare

Kiger HMA



Horse Number - 8187

2004 Grulla Mare

Kiger HMA



Horse Number - 8189

2003 Dun Mare

Kiger HMA



Horse Number - 8191

2006 Dun Mare

Kiger HMA

Horse Number - 8192

2000 Dun Mare

Kiger HMA



Horse Number - 8193

2000 Dun Mare

Kiger HMA



Horse Number - 8194

2005 Dun Mare

Kiger HMA



Horse Number - 8195

2006 Dun Mare

Kiger HMA



Horse Number - 8196

2006 Dun Mare

Kiger HMA



Horse Number - 8197

2007 Dun Filly

Kiger HMA



Horse Number - 8198

2007 Dun Colt

Kiger HMA



Horse Number - 8199

2005 Dun Mare

Kiger HMA





Horse Number - 8200

2007 Dun Filly

Kiger HMA



Horse Number - 8201

2007 Dun Colt

Kiger HMA



Horse Number - 8202

2007 Bay Filly

Kiger HMA



Horse Number - 8203

2007 Dun Filly

Kiger HMA



Horse Number - 8205

2007 Dun Colt

Kiger HMA



Horse Number - 8206

2007 Dun Colt

Kiger HMA



Horse Number - 8207

2006 Dun Stallion

Kiger HMA



Horse Number - 8208

2006 Dun Stallion

Kiger HMA

Horse Number - 8209

2007 Dun Filly

Kiger HMA



Horse Number - 8210

2007 Bay Filly

Kiger HMA



Horse Number - 8211

2007 Bay Colt

Kiger HMA



Horse Number - 8216

2003 Dun Stallion

Kiger HMA



Horse Number - 8218

2006 Black Stallion

Kiger HMA



Horse Number - 8223

2005 Dun Mare

Kiger HMA



Horse Number - 8227

2006 Grulla Mare

Kiger HMA





Horse Number - 8228

2002 Grulla Mare

Kiger HMA



Horse Number - 8229

2005 Grulla Mare

Kiger HMA



Horse Number - 8230

2006 Bay Mare

Kiger HMA



Horse Number - 8231

2006 Dun Mare

Kiger HMA



Horse Number - 8232

2007 Dun Colt

Kiger HMA



Horse Number - 8233

2007 Dun Colt

Kiger HMA



Horse Number - 8234

2007 Dun Colt

Kiger HMA



Horse Number - 8235

2007 Dun Colt

Kiger HMA

Horse Number - 8236

2007 Dun Filly

Kiger HMA



Horse Number - 8237

2007 Dun Colt

Kiger HMA



Horse Number - 8238

2000 Dun Stallion

Kiger HMA



Horse Number - 8239

2006 Dun Stallion

Kiger HMA



Horse Number - 8240

2000 Black Stallion

Kiger HMA



Horse Number - 8241

2001 Dun Stallion

Kiger HMA



Horse Number - 8242

2002 Dun Stallion

Kiger HMA



Horse Number - 8244

2005 Bay Stallion

Kiger HMA





Horse Number - 8245

2005 Dun Mare

Kiger HMA



Horse Number - 8247

2006 Brown Mare

Kiger HMA



Horse Number - 8249

2003 Dun Mare

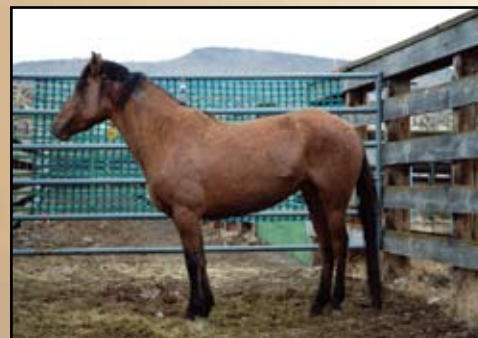
Kiger HMA



Horse Number - 8250

2002 Dun Mare

Kiger HMA



Horse Number - 8252

2001 Dun Mare

Kiger HMA



Horse Number - 8257

2001 Black Mare

Kiger HMA



Horse Number - 8258

2006 Dun Stallion

Kiger HMA



Horse Number - 8259

2007 Dun Filly

Kiger HMA

Horse Number - 8260

2007 Grulla Colt

Kiger HMA



Horse Number - 8261

2007 Bay Colt

Kiger HMA



Horse Number - 8263

2007 Dun Filly

Kiger HMA



Horse Number - 8265

2007 Brown Colt

Kiger HMA



Horse Number - 8266

2007 Dun Filly

Kiger HMA



Horse Number - 8267

2007 Dun Filly

Kiger HMA



The background of the entire page is a photograph of three horses in a field. One horse is in the foreground on the left, another is in the background on the left, and a third is on the right. The scene is lit with a warm, golden light, suggesting a sunset or sunrise.

Bureau of Land Management

Burns District

28910 Hwy 20 W
Hines, Oregon 97738

Phone: 541-573-4400

Fax: 541-573-4411

Web: www.blm.gov/or/districts/burns

District Manager

Dana Shuford

Associate District Manager

Brendan Cain

Public Affairs Specialist

Tara Martinak

Wild Horse and Burro Management Specialist

Gary McFadden

Wild Horse and Burro Program Assistant

Patti Wilson

Wild Horse Program Clerk

Ramona Bishop

Livestock

Handlers

Wendy Rickman

Gary Rose

Animal Caretaker/Facility Maintenance

Jim Cooper