

Figure 1B.—Map of parts of New York, Ohio, Pennsylvania, and West Virginia and adjoining States showing the location of section E-E' (sheet 1) and constituent wells.

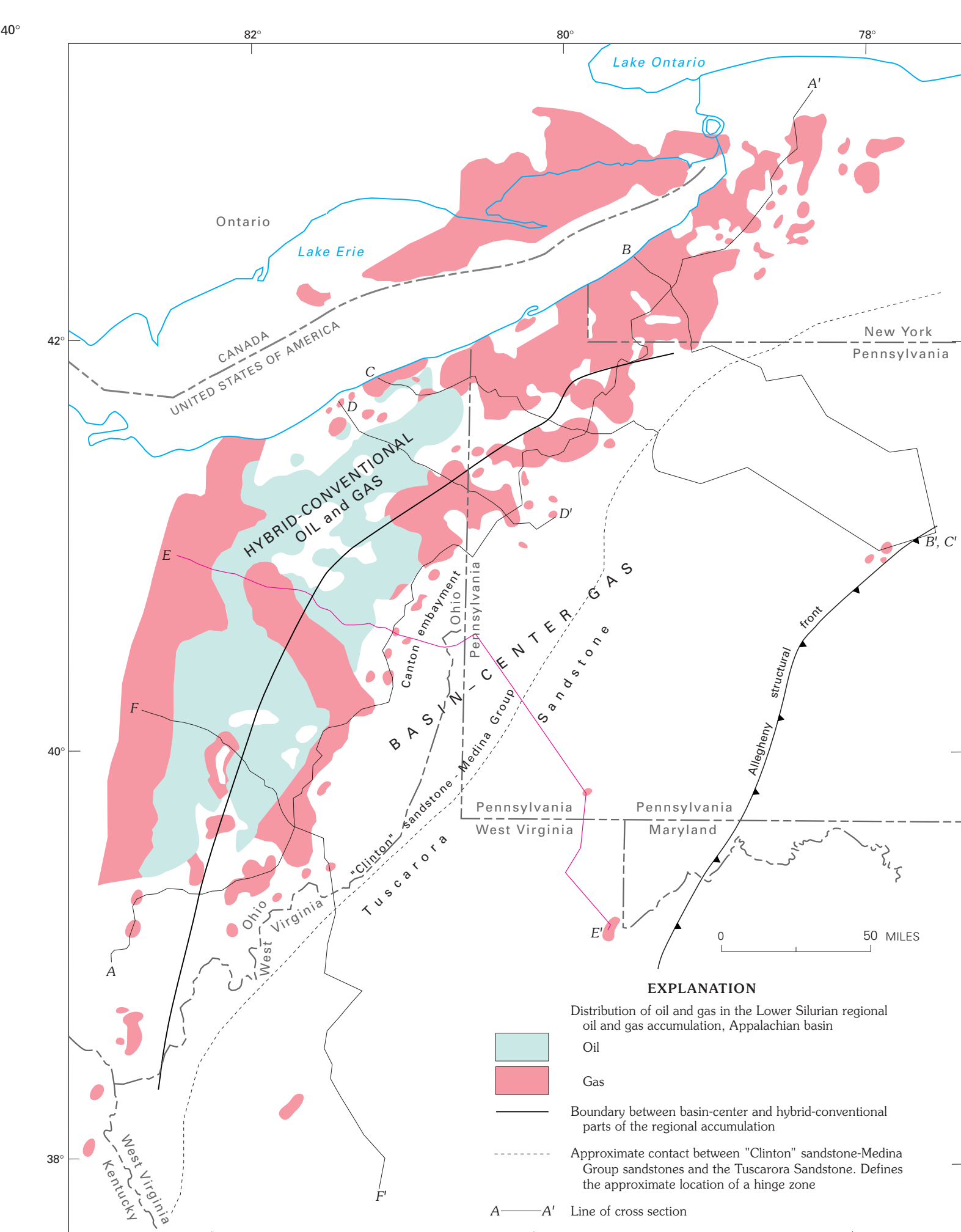


Figure 1A.—Map showing the approximate distribution of natural gas and oil in the Lower Silurian regional oil and gas accumulation of the central Appalachian basin. Also shown is the location of the Lower Silurian Tuscarora Sandstone.

Table 1.—Wells used to construct cross section E-E'. Refer to figure 1B for well locations. Also shown are perforated intervals, initial production flow per day, and reservoir names.

[Reservoirs: C, Clinton sandstone; CH, Cabot Head Shale; CM, Cacapon Sandstone Member of the Rose Hill Formation; T, Tuscarora Sandstone Formation; Oil and gas production terms: AF, after hydrofracturing; BO, barrels of oil; BW, barrels of water; MCFG, thousand cubic feet of gas; N, natural (no stimulation of reservoir rock); NR, no reported initial production; P&A, plugged and abandoned; TO, trace of oil. Well that connects section E-E' shown as G2, A-A' (120); number in parentheses refers to well 120 on section A-A'; —, no data]

Map no.	American Petroleum Institute no.	Company	Lease	County/State	Township (7.5-min quadrangle)	Date of log run	Perforated or open hole interval (depth in ft)	Initial production flow of natural gas, oil, and water (per day)	Reservoirs
1	34-005-22925	Don Vernal Jabboli	No. 1-A Swinehart	Ashtand/Ohio	Orange	3-10-72	2,483-2,488	1,000 BW; P&A, 4-24-72	C, CH
2	34-005-22964	Perry Fulk	No. 1 Rahn	Ashtand	Orange	5-18-64	—	P&A, 5-19-64	C
3	34-005-22960	Perry Fulk	No. 1 Bates	Ashtand	Orange	4-29-64	2,443-2,460	1,500 MCFG, AF; P&A, 1-30-81	C
4	34-005-23337	Bathol Resources Inc.	No. 1 Westel	Ashtand	Montgomery	1-28-81	—	P&A, 1-30-81	C
5	34-005-23368	L & M Operating Inc.	No. 1 Emmons	Ashtand	Perry	11-30-77	—	P&A, 10-10-77	C
6	34-005-22387	M & G Oil	No. 4 Cahrs	Ashtand	Perry	8-26-65	—	P&A, 10-10-65	C
7	34-005-23905	Oberniller	No. 1 Wertz	Ashtand/Ohio	Perry	4-12-81	—	P&A, 9-3-81	C
8	34-169-24754	Hill Energy Inc.	No. 1 Kommes	Wayne/Ohio	Chester	1-20-80	3,059-3,078	50 MCFG, 2 BO, AF; P&A, 9-3-81	C, CH
9	34-169-22244	Bathol Resources Inc.	No. 1 Ogden	Wayne	Chester	10-7-80	3,133-3,154	35 MCFG, AF; P&A, 9-3-81	C, CH
10	34-169-24173	Barger	No. 1 Berger	Wayne	Chester	11-25-85	2 BW, AF	44 MCFG, 9 BO, AF; P&A, 12-4-80	C, CH
11	34-169-23900	Renco Inc.	No. 1 Weaver	Wayne	Chester	11-8-81	3,110-3,112, 3,127-3,129	2 BW, AF	C, CH
12	34-169-23619	Derby Oil & Gas Corp.	No. 1-D—W-29 Redick	Wayne	Chester	2-17-84	3,223-3,236	75 MCFG, 2 BO, AF; P&A, 11-1-89	C, CH
13	34-169-22859	Renco Operating, Inc.	No. 10 Corbett	Wayne	Chester	3-18-81	3,163-3,183	30 MCFG, 6 BO, AF; P&A, 10-31-74	C, CH
14	34-169-23591	J.R. Small	No. 2 W.D. Inc.	Wayne	Chester	10-4-83	2,968-3,017	50 MCFG, 2 BO, AF; P&A, 8-21-89	C, CH
15	34-169-22043	J.R. Small	No. 1 Wagner	Wayne	Wayne	11-4-84	3,180-3,253	50 MCFG, 1 BO, AF; P&A, 9-25-89	C, CH
16	34-169-23912	G.L. Brown Co.	No. 2 Infield	Wayne	Wayne	8-26-85	3,316-3,368	100 MCFG, AF; P&A, 10-10-85	C, CH
17	34-169-24056	J.R. Small	No. 1 Jullitt	Wayne	Wayne	3-13-88	3,396-3,426	40 MCFG, AF; P&A, 12-4-80	C, CH
18	34-169-24406	J.R. Small	No. 1 Shely	Wayne	Wayne	7-1-88	3,288-3,342	75 MCFG, AF; P&A, 12-4-80	C, CH
19	34-169-23742	Bennett Corp.	No. 1-H Long	Wayne	Wayne	11-29-84	288 MCFG, AF; P&A, 11-1-89	C, CH	
20	34-169-23457	Renco Operating, Inc.	No. 6 Triverson	Wayne	Wayne	12-15-82	3,479-3,481, 3,508-3,524	75 MCFG, 2 BO, AF; P&A, 11-1-89	C, CH
21	34-169-22925	Mormack Industries Inc.	No. 1 Tuttle	Wayne	East Union	11-12-81	3,623-3,719	80 MCFG, AF; P&A, 11-1-89	C, CH
22	34-169-21889	Western Petroleum Corp.	No. 1 Welsley	Wayne	East Union	10-6-75	3,688-3,752	80 MCFG, 20 BO, AF; P&A, 11-1-89	C, CH
23	34-169-21845	Warner Petroleum Corp.	No. 1 Purvis	Wayne	East Union	6-14-75	3,668-3,722	200 MCFG, 240 BO, AF; P&A, 12-4-80	C, CH
24	34-169-21641	Pondrosa Oil Co.	No. 1 Broda	Wayne	East Union	8-13-71	—	60 MCFG, AF; P&A, 12-4-80	C, CH
25	34-169-21630	Pondrosa Oil Co.	No. 2 Marthey	Wayne	East Union	5-9-71	—	70 BO, AF; P&A, 11-1-89	C, CH
26	34-169-21671	Buckeye Resources, Inc.	No. 1 Yoder	Wayne	East Union	1-9-72	3,655-3,735	20 MCFG, AF; P&A, 10-31-74	C, CH
27	34-169-24174	Mormack Industries Inc.	No. 7 Swinehart	Wayne	East Union	10-18-85	3,634-3,720	100 MCFG, 9 BO, AF; P&A, 10-31-74	C, CH
28	34-169-24204	M.B. Operating Co., Inc.	No. 1 Tost-Miller	Wayne	East Union	8-7-85	3,686-3,763	25 MCFG, AF; P&A, 10-31-74	C, CH
29	34-169-24248	M.B. Operating Co., Inc.	No. 1 Amstutz	Wayne	Sugar Creek	10-22-85	3,772-3,835	15 MCFG, AF; P&A, 7-2-85	C, CH
30	34-169-24095	S.L. Shuler	No. 1 Swenson	Wayne	Sugar Creek	7-2-82	—	15 MCFG, AF; P&A, 7-2-82	C, CH
31	34-169-22792	Pondrosa Oil Co.	No. 1 Bennor	Wayne	Sugar Creek	10-21-81	3,729-3,801	70 MCFG, 2 BO, AF; P&A, 7-2-82	C, CH
32	34-169-22110	Esso Drilling & Production, Inc.	No. 1 Swenson	Wayne	Sugar Creek	1-22-79	3,938-3,991	100 MCFG, 1 BO, AF; P&A, 7-2-82	C, CH
33	34-169-22130	Amoco Oil & Gas, Inc.	No. 2 Johnson	Wayne	Sugar Creek	5-1-79	3,992-3,922, 3,954-3,962	678 MCFG, AF; P&A, 7-2-82	C, CH
34	34-169-23181	Derby Oil & Gas Corp.	No. 2 Balkman	Wayne	Sugar Creek	9-16-82	4,082-4,124, 4,178-4,177	115 MCFG, AF; P&A, 7-2-82	C, CH
35	34-169-23311	Derby Oil & Gas Corp.	No. 1 Cronan	Wayne	Sugar Creek	9-4-82	4,083-4,078	115 MCFG, AF; P&A, 7-2-82	C, CH
36	34-151-24209	M.B. Operating Co., Inc.	No. 1 Middlebrook Farms	Stark/Ohio	Tuscarawas	1-15-85	4,123-4,187	80 MCFG, 4 BO, AF; P&A, 11-1-89	C, CH
37	34-151-24241	M.B. Operating Co., Inc.	No. 1 Buchman	Stark	Tuscarawas	8-31-84	4,084-4,198	85 MCFG, 3 BO, AF; P&A, 11-1-89	C, CH
38	34-151-24359	Balden & Blake Co.	No. 1-342909	Stark	Tuscarawas	9-23-89	4,182-4,216	50 MCFG, 1 BO, AF; P&A, 11-1-89	C, CH
39	34-151-24429	Balden & Blake Co.	No. 1-342919 Knieder	Stark	Tuscarawas	1-24-88	4,173-4,272	30 MCFG, 1 BO, AF; P&A, 11-1-89	C, CH
40	34-151-24594	Balden & Blake Co.	No. 1 Harwig	Stark	Tuscarawas	3-2-90	4,167-4,261	50 MCFG, 1 BO, AF; P&A, 11-1-89	C, CH
41	34-151-24725	M.B. Operating Co., Inc.	No. 13 State of Ohio	Stark	Perry	8-19-91	4,278-4,312, 4,349-4,360	40 MCFG, 1 BO, AF; P&A, 8-21-89	C, CH
42	34-151-21024	East Ohio Gas Co.	No. 1 Cronan	Stark	Perry	8-6-59	4,360-4,408	20 MCFG, 1 BO, AF; P&A, 8-21-89	C, CH
43	34-151-24167	M.B. Operating Co., Inc.	No. 1-A Kick	Stark	Perry	10-27-85	4,455-4,540	75 MCFG, 3 BO, AF; P&A, 11-1-89	C, CH
44	34-151-24840	M.B. Operating Co., Inc.	No. 1 Provest	Stark	Perry	10-25-84	4,455-4,540	75 MCFG, 3 BO, AF; P&A, 11-1-89	C, CH
45	34-151-24849	Balden & Blake Co.	No. 2 Ohio River-Stark County Comm.	Stark	Pike	6-1-90	4,700-4,760	1 BW, AF; P&A, 11-1-89	C, CH
46	34-151-24388	M.B. Operating Co., Inc.	No. 1 Wright-Coller	Stark	Pike	10-25-87	4,686-4,768	15 MCFG, 1 BO, AF; P&A, 11-1-89	C, CH
47	34-151-23997	Power Resources Operating Co.	No. 1 Weaver	Stark	Pike	4-27-84	4,720-4,783	100 MCFG, 1 BO, AF; P&A, 11-1-89	C, CH
48	34-151-23844	CHG Development	No. 1 Nettle	Stark	Pike	7-21-83	4,707-4,767	100 MCFG, 1 BO, AF; P&A, 11-1-89	C, CH
49	34-151-21380	Professional Petroleum Exploration	No. 1 Grooms	Stark	Pike	3-1-88	4,738-4,792	880 MCFG, 28 BO, AF; P&A, 11-1-89	C, CH
50	34-151-22292	Scott Lutz	No. 2 Hackett	Stark	Pike	12-8-73	4,723-4,778	150 MCFG, 6 BO, AF; P&A, 11-1-89	C, CH
51	34-151-22963	M.B. Oil & Gas, Inc.	No. 2 Wheeler-Evans	Stark	Pike	2-8-73	4,913-4,976	275 MCFG, 19 BO, AF; P&A, 11-1-89	C, CH
52	34-019-20409	Balden & Blake Co.	No. 11-532 Whitacre Creeper	Carroll/Ohio	Rose	12-20-68	4,806-4,940	450 MCFG, 45 BO, AF; P&A, 11-1-89	C, CH
53	34-019-20334	Stocks & Siler, Inc.	No. 1 Madison	Carroll	Rose	4-8-68	4,892-5,038	48 BO, AF; P&A, 11-1-89	C, CH
54	34-019-21420	Canton Oil & Gas Company	No. 5-745 Glen-Gery	Carroll	Rose	12-22-74	5,067-5,099, 5,118-5,126	40 BO, AF; P&A, 11-1-89	C, CH
55	34-019-21744	Balden & Blake Co.	No. 1-341532 Eck	Carroll	Harrison	1-15-85	4,544-4,544	36 MCFG, 22 BO, AF; P&A, 11-1-89	C, CH
56	34-019-20950	Quaker State Oil	No. 1-Q-2522 Metz-Vanick	Carroll	Harrison	2-21-76	5,516-5,564	20 BO, AF; P&A, 11-1-89	C, CH
57	34-019-21513	Balden & Blake Co.	No. 1-341195	Carroll	Harrison	12-18-81	5,554-5,636	25 MCFG, 11 BO, AF; P&A, 11-1-89	C, CH
58	34-019-21648	Power Resources Operating Co.	No. 1 Boyle	Carroll	Harrison	9-14-83	5,583-5,684	70 MCFG, 18 BO, AF; P&A, 11-1-89	C, CH
59	34-019-21688	Power Resources Operating Co.	No. 1 Green	Carroll	Harrison	8-3-84	5,511-5,568	100 MCFG, 1 BO, AF; P&A, 11-1-89	C, CH
60	34-019-21645	M.B. Operating Co., Inc.	No. 1 M-Daniel	Carroll	Washington	8-10-83	5,668-5,764	15 MCFG, 7 BO, AF; P&A, 11-1-89	C, CH
61	34-019-21583	M.B. Operating Co., Inc.	No. 1 Neader	Carroll	Washington	7-7-83	5,965-6,059	80 MCFG, AF; P&A, 7-26-81	C, CH
62, A-A' (120)	34-019-20953	Management Control	No. 1 McAllister	Carroll	Washington	2-19-71	—	P&A, 2-20-71	C, CH
63	34-019-21953	M.B. Operating Co., Inc.	No. 1 Carlson	Carroll	Fox	6-29-83	6,129-6,141	30 MCFG, AF; P&A, 9-25-89	C, CH
64	34-019-21652	M.B. Operating Co., Inc.	No. 1 Bwadell	Carroll	Fox	8-25-83	6,486-6,567	10 MCFG, 1 BO, AF; P&A, 9-25-89	C, CH
65	34-081-20461	Balden & Blake Co.	No. 1 Jackson et al.	Jefferson/Ohio	Salina	10-20-84	6,606-6,655, 6,701-6,708	17 MCFG, 12 BW, AF; P&A, 11-1-89	C, CH
66	37-029-20080	Hunters Oil & Refining	No. 1 Miesinger	Hancock/West Virginia	(East Liverpool South)	8-4-85	—	—	C, CH
67	37-007-20000	St. Joe Petroleum US Corp.	No. 1 Ashport	Boone/West Virginia	(Rockstown)	12-4-75	—	—	C, CH
68	37-051-20556	W.E. Snee et al.	No. 1 Ricks	Jefferson/West Virginia	(Brown field)	3-29-67	11,680-11,680	313 MCFG, AF; P&A, 11-1-89	T, CMP
69	47-077-00169	Consolidated Gas Supply	No. 11537 Huggins	Preston/West Virginia	(Nelly Point)	2-24-73	NR	848 MCFG, AF; P&A, 11-1-89	T, CMP
70	47-077-00098	Phillips Petroleum Co.	No. A-1 Walls	Preston/West Virginia	(Clidwell)	3-21-65	—	—	T, CMP
71	47-077-00099	Columbia Carbon Co.	No. 1374 USA N-1	Preston	(Laural)	12-17-62	7,208-7,272, 7,366-7,408	698 MCFG, AF; P&A, 11-1-89	T, CMP
72	47-077-00119	Cites Service Oil Co.	No. GW-1466 USA Q-1	Preston	(Lead Mine)	2-14-64	NR	16,300 MCFG, N	T, CMP

