

LONGFELLOW NATIONAL HISTORIC SITE
CAMBRIDGE, MASSACHUSETTS

FINDING AID FOR
WASHINGTON ALLSTON (1779-1843) MATERIALS,
1798-1966 (BULK DATES 1939-1949)

-- AS COMPILED BY H. W. L. DANA (1881-1950) --

COLLECTION CATALOG NUMBER: LONG 20258

CATALOG NUMBERS FOR ITEMS CATALOGED INDIVIDUALLY:
LONG 14355-14368, 14410, 14420, 14442-14554, AND 20190-20255

PREPARED BY

D.E.W. GODWIN
JONATHAN BOHAN
ANN MARIE DUBÉ
ANITA ISRAEL
JOHN J. PROWSE
MARGARET WELCH

Northeast
MUSEUM SERVICES CENTER

Third Edition
SEPTEMBER 2007

*Cover illustration: Richard Morell Staigg (1817-1881), Washington Allston, ca. 1840.
Museum of Fine Arts, Boston. Photograph from Longfellow National Historic Site,
Washington Allston (1779-1843) Materials (LONG 20258), box 13.*

CONTENTS

List of Illustrations	iii
Preface.....	v
Restrictions	vii
Introduction.....	1
Part 1: Collection Description.....	3
Scope and Content Note	5
Series Descriptions	8
I. Biography	8
II. Works	8
III. Friends	8
IV. Trust.....	8
V. Binders re:	
A. Biography.....	8
B. Works	8
C. Friends.....	8
VI. Index Cards.....	9
VII. Photographs and Negatives	9
VIII. Lantern Slides	9
IX. Oversize Materials.....	9
X. Books, Magazines, and Catalogs	9
Part 2: Biographical Data.....	11
Washington Allston (1779-1843)	12
Henry Wadsworth Longfellow Dana (1881-1950).....	16

Part 3: Collection Listing	19
I. Biography	21
II. Works	21
III. Friends	24
IV. Trust.....	24
V. Binders re:	
A. Biography.....	25
B. Works	26
C. Friends.....	26
VI. Index Cards.....	26
VII. Photographs and Negatives	27
VIII. Lantern Slides	45
IX. Oversize Materials.....	48
X. Books, Magazines, and Catalogs	50
Bibliography	57

Appendix: List of Catalog Numbers

ILLUSTRATIONS

- Figure 1 (cover):* Richard Morell Staigg (1817-1881), *Washington Allston*, ca. 1840. Museum of Fine Arts, Boston. Photograph from Longfellow National Historic Site, Washington Allston (1779-1843) Materials (LONG 20258), box 13.
- Figure 2:* Gilbert Stuart, *Washington Allston*. Metropolitan Museum of Art, New York. Photograph from Longfellow National Historic Site, Washington Allston (1779-1843) Materials (LONG 20258), box 13.
- Figure 3:* Photograph, Washington Allston's Studio, corner of Magazine and Auburn Streets, Cambridgeport. Photograph from Longfellow National Historic Site, Washington Allston (1779-1843) Materials (LONG 20258), box 13.
- Figure 4:* Bachrach, *Henry Wadsworth Longfellow Dana*. Photograph from Longfellow National Historic Site, Henry Wadsworth Longfellow Dana (1881-1950) Papers (LONG 17314), Series IX. Collected Materials, box 141, folder 8.
- Figure 5:* Washington Allston, *Washington Irving*, 1805. Photograph from Longfellow National Historic Site, Washington Allston (1779-1843) Materials (LONG 20258), box 14.
- Figure 6:* Washington Allston, *Dido and Anna*, ca. 1813-1815. The Lowe Art Museum, University of Miami, Florida. Photograph from Longfellow National Historic Site, Washington Allston (1779-1843) Materials (LONG 20258), box 13.

PREFACE

This document, the third edition of *Finding Aid for Washington Allston (1779-1843) Materials, 1868-1966 (bulk dates 1939-1949) -- as compiled by H.W.L. Dana (1881-1950)*, describes research papers collected by Henry Wadsworth Longfellow Dana, a grandson of Henry Wadsworth Longfellow. This edition reflects the addition of materials in 2007. A draft of this finding aid was issued in June 1997 and was the result of two cataloging projects carried out by the Northeast Museum Services Center during 1994 and in 1997; another edition was issued in 1999. Both editions are obsolete with the release of the current document.

The catalogers in all phases of the project expressed their gratitude towards staff at Longfellow National Historic Site for their assistance in carrying out this work, in particular, Site Manager Jim Shea and former Museum Specialist Michele Clark.

This document represents many hours of work recording details about the items herein described. The reader should expect a reasonable degree of human error and consequently rely on personal observation of the actual items.

COPYRIGHT AND PRIVACY RESTRICTIONS

The copyright law of the United States (Title 17, *United States Code*) governs the making of photocopies or other reproductions of copyrighted materials. The Privacy Act of 1974 (5 *United States Code* 552a) governs the use of materials that document private individuals, groups and corporations.

Under certain conditions specified in the law, libraries and archives are authorized to furnish a reproduction if the document does not infringe the privacy rights of an individual, group or corporation. These specified conditions of authorized use include:

- non-commercial and non-profit study, scholarship, research or teaching
- criticism or commentary
- as a NPS preservation or security copy for research use
- as a research copy for deposit in another institution

If the researcher later uses a copy or reproduction for purposes in excess of "fair use," the researcher is personally liable for copyright, privacy, or publicity infringement and agrees to indemnify the NPS from any legal action as a result of the error. Permission to obtain a photographic, xerographic, digital or other copy of a document **doesn't** indicate permission to publish, exhibit, perform, reproduce, sell, distribute or prepare derivative works from the document without permission from the copyright holder and from any private individual, group or corporation shown or otherwise recorded.

Permission to publish, exhibit, perform, reproduce, prepare derivative works from, sell or otherwise distribute the item must be obtained separately in writing from the holder of the original copyright (or if the creator is dead from his/her heirs) as well as from any individual(s), groups or corporations whose name, image, recorded words or private information (e.g. employment information) may be reproduced in the source material. The holder of the original copyright **isn't** necessarily the National Park Service. The National Park Service is not legally liable for copyright, privacy or publicity infringement when materials are wrongfully used after being provided to researchers for "fair use."

This institution reserves the right to refuse to accept a copying order if fulfillment of the order is judged in violation of copyright or federal or state privacy or publicity law. This institution also places restrictions on the use of cameras, photocopiers and scanners in the research room.

INTRODUCTION

This finding aid describes the Washington Allston (1779-1843) Materials, 1798-1966 (bulk dates 1939-1949) -- as compiled by H.W.L. Dana (1881-1950). The collection consists of various items collected by Henry Wadsworth Longfellow Dana (whose maternal grandfather was Henry Wadsworth Longfellow) in the course of researching the life and works of Washington Allston, considered to be America's first romantic artist. There also are a few notes and correspondence of H.W.L. Dana's father, Richard Henry Dana III, and of his aunt, Elizabeth Ellery Dana, as well as a small amount of material added after H.W.L. Dana's death. The Washington Allston materials, including both H.W.L. Dana's research as well as Allston's library, were accessioned into the Longfellow National Historic Site museum collection as part of accession LONG-1 when the Longfellow House Trust, which was formed in 1913, donated the Longfellow house and its contents to the National Park Service in 1973.

Washington Allston's second wife, Martha Remington Dana Allston, was the sister of Richard Henry Dana, Sr. (H.W.L. Dana's paternal great-grandfather). Upon Washington Allston's death, Mrs. Dana's nephew, Richard Henry Dana, Jr., became trustee of the Washington Allston Trust, a fund which had arisen from shares purchased by Allston's friends to support him during his twenty-six-year work on his masterpiece *Belshazzar's Feast* which remained unfinished at the time of his death. Trusteeship passed to Richard Henry Dana, Jr.'s son, Richard Henry Dana III. H.W.L. Dana -- who was a lifetime resident of the Craigie house, the home of his maternal grandparents Henry and Fanny Longfellow -- became trustee upon the death of his father, Richard Henry Dana III. H.W.L. Dana was charged with the care, conservation, and storage of Allston's unsold works which became the property of the trust. He was also responsible for purchasing other works which came up for sale. Upon H.W.L. Dana's death in 1950, a portion of his papers, including the Washington Allston materials, became the property of the Longfellow House Trust, who later donated them to the National Park Service in 1973, as noted above.

In the fall of 1994, Ann Marie Dubé, Anita Israel, and John J. Prowse of the Collections Accountability Program (now the Northeast Museum Services Center) undertook a project to rehouse and catalog the Washington Allston materials. A survey of the papers revealed that they dealt with four subject categories: biographical material about Washington Allston; information on his works; papers dealing with his friends; and materials resulting from H.W.L. Dana's role as trustee of the Washington Allston Trust. The catalogers grouped the materials under these four headings but maintained original order within each subject group. The catalogers found that the collection also contained numerous loose-leaf binders. The catalogers removed the material from the binders and grouped the loose papers under the following subject headings (matching those outlined above): biographical material about Washington Allston; information on his works; and papers dealing with his friends. The catalogers found that the collection contained a few index cards; these were left in original order. Photographs and negatives found throughout the collection, as well as oversize materials, were removed by the catalogers to separate storage. The collection was cataloged into the Automated National Catalog System as LONG 20258, a catalog card was printed, and a box and folder list was drafted. In addition, the collection of

lantern slides was cataloged separately from the main collection, with a catalog record created for each slide. The same was done for the books, magazines, and catalogs in Allston's library.

In the spring of 1997, Jonathan Bohan (museum technician with the Society for the Preservation of New England Antiquities) drafted a finding aid, which was distributed in June 1997. Diane Godwin, archivist with the Northeast Museum Services Center, revised the finding aid and distributed it in final in July 1999. In 2007 Margaret Welch, another archivist with the Northeast Museum Services Center, incorporated materials identified after the first phases and issued the third edition of the finding aid.

The finding aid is divided into five sections:

- Part 1: Collection Description:
 - a scope and content note (or brief synopsis of the collection)
 - descriptions of the various series into which the collection is organized

- Part 2: Biographical Data:
 - a biographical sketch of Washington Allston
 - a biographical sketch of Henry Wadsworth Longfellow Dana

- Part 3: Collection Listing:
 - Papers: a box and folder list for each series
 - Binders: a box and folder list for each series
 - Index Cards
 - Photographs and Negatives
 - Lantern Slides
 - Oversize Boxes: a list of items which are larger than the letter and legal size boxes which house the bulk of the collection
 - Books, Magazines, and Catalogs

- Bibliography

- Appendix: list of catalog numbers.

PART 1:

COLLECTION DESCRIPTION

SCOPE AND CONTENT NOTE

Washington Allston (1779-1843) Materials, 1798-1966 (bulk dates 1939-1949) -- as compiled by H.W.L. Dana (1881-1950)

Accession number: LONG-1.

*Catalog numbers*¹: Collection: LONG 20258.
Items cataloged individually: LONG 14355-14368, 14410², 14420, 14442-14554, 20190-20255, and 25612. These numbers break down as follows:

- Individual items within the collection (LONG 20258): LONG 14410³, 14497, 14503, 14522-14523, 14537-14543, and 14545-14548, 25612.
- Books, magazines, and catalogs in Allston's library: LONG 14420 and 14442-14492.
- Books, magazines, and catalogs in H.W.L. Dana's library regarding Allston: LONG 14355-14368, 14493-14496, 14498-14502, 14504-14521, 14524-14536, 14544, and 14549-14554.
- Lantern slides: LONG 20190-20255.

Quantity: 15.75 linear feet, comprised of three sets of material:

- 10.33 linear feet of files (approximately 16,528 items) cataloged as LONG 20258 and including 16 items cataloged individually as LONG 14410⁴, 14497, 14503, 14522-14523, 14537-14543, and 14545-14548.
- 52 books, magazines, and catalogs in Allston's library stored in 2 Record Center cartons comprising 2.0 linear feet, cataloged as LONG14420 and 14442-14492.
- 61 books, magazines, and catalogs in H.W.L. Dana's library regarding Allston, stored in 3 Record Center cartons comprising 3.0 linear feet, cataloged as LONG 14355-14368, 14493-14496, 14498-14502, 14504-14521, 14524-14536, 14544, and 14549-14554.
- 65 lantern slides and one box, comprising 0.42 linear feet, cataloged as LONG 20190-20255.

¹See Appendix for a list of catalog numbers and object names.

²As of the date of this finding aid's release, this item has not been located.

³As of the date of this finding aid's release, this item has not been located.

⁴As of the date of this finding aid's release, this item has not been located.

- Storage:* 3 letter size archives boxes, 1 half letter size archives box, 6 legal size archives boxes, 2 half legal size archives boxes, 1 index card box, 3 photograph boxes, 2 flat boxes, 5 Record Center cartons, and 1 wooden lantern slide box.
- Location:* Longfellow National Historic Site, 105 Brattle Street, Cambridge, Massachusetts 02138-3407, (617) 876-4491.
- Description:* The Washington Allston (1779-1843) Materials, 1798-1966 (bulk dates 1939-1949) -- as compiled by H.W.L. Dana (1881-1950) -- consist of the research notes, manuscripts, correspondence, index cards, photostats, photographs, books, lantern slides and other material collected by Henry Wadsworth Longfellow Dana in the course of researching Washington Allston, considered to be America's first romantic artist. The collection also includes books from Washington Allston's own library, as well as a small number of items which were added after the death of Dana in 1950. H.W.L. Dana used this research material for numerous articles and lectures on Washington Allston which he planned to expand into a complete biography, entitled *Washington Allston: Romantic Poet and Author*, but this work was never finished. Dana also collaborated with Edgar Preston Richardson of the Detroit Institute of Arts on a catalogue raisonné of Allston's works and provided information for several Allston exhibits.
- The collection is organized into ten series: I. Biography; II. Works; III. Friends; IV. Trust; V. Binders re: biography, works, and friends; VI. Index Cards; VII. Photographs and Negatives; VIII. Lantern Slides; IX. Oversize Materials; and X. Books, Magazines, and Catalogs.
- Short biographies of Washington Allston and of H.W.L. Dana are provided in this finding aid.
- Cross-references:* Works of art in the museum collection at Longfellow National Historic Site are described in a separate finding aid.
- The papers of H.W.L. Dana are described in the *Finding Aid for Henry Wadsworth Longfellow Dana (1881-1950) Papers, 1744-1971 (bulk dates 1850-1950)*.

Organization: Washington Allston (1779-1843) Materials, 1798-1966 (bulk dates 1939-1949) -- as compiled by H.W.L. Dana (1881-1950)

- I. Biography
- II. Works
- III. Friends
- IV. Trust
- V. Binders re:
 - A. Biography
 - B. Works
 - C. Friends
- VI. Index Cards
- VII. Photographs and Negatives
- VIII. Lantern Slides
- IX. Oversize Materials
 - A. Oversize Materials removed from the Main Collection
 - 1. Oversize Materials removed from Series I. Biography
 - 2. Oversize Materials removed from Series II. Works
 - B. Oversize Materials found Together
 - 1. Oversize Materials related to Series I. Biography
 - 2. Oversize Materials related to Series II. Works
 - 3. Oversize Materials related to Series III. Friends
- X. Books, Magazines, and Catalogs
 - A. Washington Allston's Library
 - B. H.W.L. Dana's Library re: Washington Allston

SERIES DESCRIPTIONS

Series I. Biography (part of LONG 20258)

This series consists of H.W.L. Dana's research material and writings on the life of Washington Allston, including notes, lists, genealogies, correspondence, photographs, newspaper clippings and articles, brochures, catalogs and photostats. Within the series, all materials are arranged in the order in which they were found, with original folder titles retained.

Series II. Works (part of LONG 20258)

The materials in this series were generated by H.W.L. Dana's efforts to locate all extant works of Washington Allston and to obtain a photograph of each one. There are additional materials which resulted from his efforts to document all known works - including those lost or destroyed - for inclusion in a catalogue raisonné. This series contains correspondence, publications, photographs, and photostats of Allston's correspondence, arranged roughly by subject.

Series III. Friends (LONG 20258)

Allston's closest friends included some very well-known people, such as Samuel Taylor Coleridge, Washington Irving, and John Vanderlyn. This series contains biographical materials, correspondence, and correspondence copies, arranged roughly alphabetically.

Series IV. Trust (part of LONG 20258)

This series consists primarily of H.W.L. Dana's correspondence to various museums in his efforts to find a satisfactory repository for the Allston paintings owned by the Washington Allston Trust, a fund which had arisen from shares purchased by Allston's friends to support him during his twenty-six-year work on his masterpiece *Belshazzar's Feast*. There is also some correspondence concerning the purchase of Allston works that were for sale, as well as dealing with the conservation of some paintings.

Series V. Binders re: A. Biography, B. Works, and C. Friends (part of LONG 20258)

There are three sets of loose leaf binders, dealing with three subjects (matching those outlined above): biography, works, and friends. The binders contain H.W.L. Dana's research notes, lists, and indices on these subjects, as well as drafts for the various chapters of his Allston biography. The papers which were contained in the binders have been transferred to folders, with the original titles retained.

Series VI. Index Cards (part of LONG 20258)

This series is comprised primarily of index cards on which are citations for books and articles used by H.W.L. Dana in his research. Also included are several cards with quotes, postcards relating to Dana research, and a page torn from an advertisement for the Carnegie Book Shop in New York City.

Series VII. Photographs and Negatives (part of LONG 20258)

Photographs and negatives found throughout the collection described above were removed to separate storage (boxes 13-15). The photographs and negatives are arranged in the order of the collection. Box 16 contains glass plate negatives separated from the main collection. Box 17 contains negatives of Allston works.

Series VIII. Lantern Slides (cataloged as LONG 20190-20255)

This series is comprised of a wooden box containing sixty-five lantern slides, which were apparently made by H.W.L. Dana in 1943 for a lecture on Washington Allston commemorating the 100th anniversary of Allston's death. The slides and box were cataloged individually as LONG 20190-20255 and therefore are not included in the item count for LONG 20258.

Series IX. Oversize Materials (part of LONG 20258)

Items in this series are grouped together because of their common size. This series is divided into two sub-series: A. Oversize Materials removed from the Main Collection (from Series I. Biography and Series II. Works) and B. Oversize Materials found Together (related to Series I. Biography, Series II. Works, and Series III. Friends).

Series X. Books, Magazines, and Catalogs (cataloged as LONG 14355-14368, 14493-14496, 14498-14502, 14504-14521, 14524-14536, 14544 and 14549-14554)

The books, magazines, and catalogs are organized into two sub-series. The first sub-series, A. Washington Allston's Library, contains items cataloged as LONG 14420 and 14442-14492. The second sub-series, B. H.W.L. Dana's Library re: Washington Allston, contains items cataloged as LONG 14355-14368, 14493-14496, 14498-14502, 14504-14521, 14524-14536, 14544, and 14549-14554. The items in this series are not included in the item count for LONG 20258.

PART 2:

BIOGRAPHICAL DATA



*Figure 2: Gilbert Stuart, Washington Allston. Metropolitan Museum of Art, New York.
Photograph from Longfellow National Historic Site,
Washington Allston (1779-1843) Materials (LONG 20258), box 13.*

Washington Allston (1779-1843)⁵

Washington Allston, born 5 November 1779 in South Carolina, was considered America's first romantic artist. Painting tradition in America during the eighteenth century was based on portrait painting, both large oils and miniatures. Allston became the first American painter not dependent on portraiture for his livelihood, painting instead romantic landscapes and scenes based on literature. He was noted for his dramatic subject matter, use of light, and atmospheric color.

The son of William A. Allston, a wealthy plantation owner who had served in the Revolutionary War, Washington Allston was named for George Washington. In 1781 his father died, and four years later his mother, Rachel Moore, married Dr. Henry Collins Flagg of Newport, Rhode Island. Allston's early education took place in Charleston, but at the age of eight he was sent to Newport to study with Robert Rogers in preparation for Harvard College. He began to develop his artistic interests and received his earliest art instruction at that time. He became friendly with some artists, but perhaps more importantly, he formed a friendship with William Ellery Channing, the future Unitarian minister, and Channing's sister Ann.

Allston entered Harvard College in 1796, a year after Channing began his studies there, and graduated in 1800. While at Harvard, Allston continued the classical education he had begun under Rogers' tutelage, and this was reflected in the subject matter of his paintings. He also formed abiding friendships with people who would be significant to his life and career, such as Edmund Trowbridge Dana and Leonard Jarvis. He continued drawing and painting while in college, and by the time he graduated had determined to pursue an artistic career.

Following graduation from Harvard, and after a visit to South Carolina to see his ailing stepfather (who died early in 1801), Allston set off for Europe to study art. He arrived in London with his friends, Edmund Trowbridge Dana and miniaturist Edward Malbone, and commenced study at the Royal Academy under Benjamin West. While in London, Allston became friendly with John Vanderlyn and in 1803 travelled with him to Paris via Holland. In Paris they both exhibited paintings in the 1804 Salon, becoming the earliest Americans to do so. After a ten-month stay in Paris, Allston went to Italy via Switzerland, arriving in Rome in November 1804. He soon formed lasting friendships with Washington Irving and with Samuel Taylor Coleridge, who arrived in Rome in December 1805. Fearing the invasion of Napoleon's army, Coleridge hastily left Italy in 1806 and in March 1808 Allston sailed for home, fearing America would soon be involved in the Napoleonic wars.

On his return to America, Allston established himself as a professional painter in Boston, and on 19 June 1809 married his childhood friend, Ann Channing, after an eleven-year courtship. He

⁵Information for this biography came from three sources: 1) William H. Gerdtz & Theodore E. Stebbens Jr., *"A Man of Genius:" The Art of Washington Allston* (Boston: The Museum of Fine Arts, 1979); 2) Nathalia Wright, ed., *The Correspondence of Washington Allston* (Lexington, KY: The University Press of Kentucky, 1993); and 3) George Iles, *Leading American Inventors*, Biographies of Leading Americans, W.P. Trent, ed. (New York: Henry Holt and Company, 1912).

became a good friend and close colleague of Gilbert Stuart, and during this period Allston produced his greatest number of portraits, reflecting the continuing theme of artistic preference in America.

In 1811 Washington Allston returned to London with his wife and his young student, Samuel F.B. Morse. He renewed his close friendship with Samuel Coleridge and through him met William Wordsworth, Robert Southey, and art patron Sir George Beaumont. He also renewed his relationship with his old teacher and mentor Benjamin West. These eight years that he spent in England, and primarily in London, were the period of his greatest success in the creation of his major historical paintings, in his patronage by English art connoisseurs, and in his opportunity for self-expression. However, he also endured periods of ill health and great financial set-backs. Early in 1815 his wife fell ill and died shortly thereafter, which left Allston severely depressed and unable to paint. The support of his friends, especially Coleridge, helped him through this severe trial, which was compounded several months later by the departure of Morse for America.

By the end of 1815, however, Allston reemerged into London society, visiting and dining with American minister John Quincy Adams, and continuing with his painting. In September 1817 Allston again travelled to Paris with his friends and colleagues William Collins and Charles Leslie. They spent six weeks studying paintings at the Louvre and admiring contemporary French painting. This visit to Paris seemed to infuse Allston with renewed creative energy, for on his return to London he started several major paintings. It was during this period that he started work on his great canvas *Belshazzar's Feast*.

Although he was at the height of his career in England, in 1818 Washington Allston decided to return to the United States against the advice of his friends. He was voted in as an associate of the Royal Academy after his return to America, and in Boston he was well patronized, his reputation having preceded him. He continued to suffer severe economic restrictions, however, partly because the prices he received were comparatively low (as most of the pictures were relatively small) and because many of his paintings remained unfinished. After two years in America, Allston finally returned to work on *Belshazzar's Feast*. He invited his friend Gilbert Stuart to inspect and criticize the picture, which proved disastrous. Stuart made suggestions concerning the perspective of the painting which caused Allston to rework the entire composition. In October 1821 he reported the picture two-thirds finished, but each new effort seemed to engender more changes. In February of 1823 he said he hoped to finish it by May, and indeed, it was reported almost finished by Chester Harding who saw it in 1823.

The other hindrance to the completion of *Belshazzar's Feast* was the result of good will. In order to free Allston from pecuniary pressures and allow him the time to finish his masterpiece, twelve wealthy friends and patrons subscribed a sum of \$10,000 to be used for the purchase of the finished painting. The money was entrusted to a group of three trustees, so Allston could draw on the funds when needed. The painting was so close to completion in 1827 that a frame was ordered for it, but he did not finish it then. Ostensibly, one of Allston's problems in completing

the work was having a studio large enough to view it from a great enough distance to properly correct the perspective. When given the use of a large studio, he did not unroll the canvas for many months, and when he resumed work on it, reportedly blotted out four years' work. At the end of the decade he lost the use of the large studio, so returned again to a variety of themes. In 1830 Washington Allston finally married Martha Remington Dana after a nine-year engagement. Miss Dana was the sister of Allston's long-time friends Edmund Trowbridge Dana and Richard Henry Dana, Sr. (Henry Wadsworth Longfellow Dana's paternal great-grandfather), and a cousin of Allston's first wife Ann Channing. The couple moved into a house in Cambridgeport, and a year later a separate studio building was completed. Although the studio was large enough to accommodate paintings of tremendous size, *Belshazzar* remained rolled up for eight more years. During this time Allston resumed work on the more immediately remunerative smaller pictures and planned larger compositions which were never completed. He received many visitors at his house and studio, including Thomas Sully, Washington Irving, John J. Audubon, Asher Durand, Thomas Cole, and Charles Dickens.

In 1836, Allston was offered a commission to paint two of the panels of the Capitol rotunda. His old friends, Leonard Jarvis and John Quincy Adams were members of the Joint Congressional Committee appointed to contract with artists for this purpose, but Allston declined this offer, pleading his commitment to finish *Belshazzar* and other commissions. He pressed that one of the panels be awarded to Morse, but the committee did not accept his suggestion.

In 1839, *Belshazzar* was unrolled again, and Allston continued to work on it until his death, abandoning most other works. In June of 1843 he started complaining of pains on his left side and on the evening of 9 July he died, leaving his masterpiece unfinished after twenty-six years. His funeral was held the next evening, with his body being carried to the Cambridge Burying Ground in a torchlight parade by Harvard students and laid in the Dana tomb.

Washington Allston was also an author, having published a book of poetry, *The Sylphs of the Seasons with other Poems*, in 1813, and, in 1841, *Monaldi*, a gothic novel set in eighteenth century Rome, Florence, and Naples. His *Lectures on Art* was published posthumously in 1850.

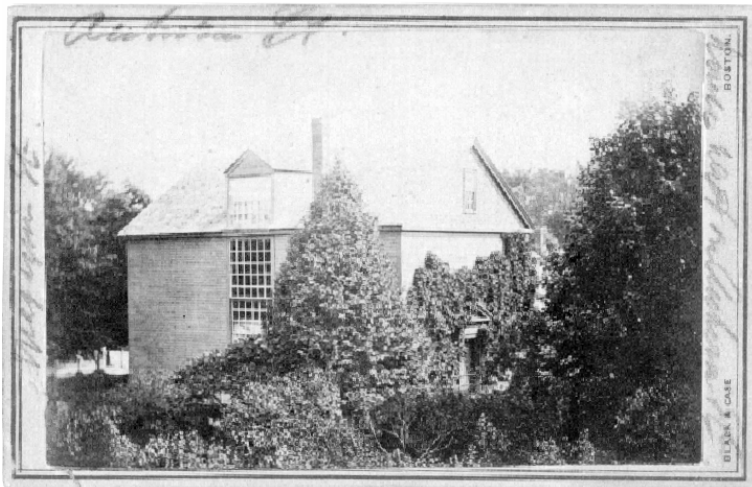


Figure 3: Photograph, Washington Allston's Studio, corner of Magazine and Auburn Streets, Cambridgeport. Photograph from Longfellow National Historic Site, Washington Allston Materials (LONG 20258), box 13.



*Figure 4: Bachrach, Henry Wadsworth Longfellow Dana.
Photograph from Longfellow National Historic Site,
Henry Wadsworth Longfellow Dana Papers (LONG 17314),
Series IX. Collected Materials, box 141, folder 8.*

Henry Wadsworth Longfellow Dana (1881-1950)⁶

H.W.L. Dana was born in Boston on 26 January 1881 to Edith Longfellow and Richard Henry Dana, III. Dana had two famous grandfathers: Henry Wadsworth Longfellow was Dana's maternal grandfather and Richard Henry Dana, Jr., was his paternal grandfather. Dana was a great grand-nephew of Washington Allston.

Dana was educated at the Browne and Nichols School in Cambridge and at Harvard University. After earning a PhD in 1910 he became an instructor and then professor of comparative literature. In 1917 he was dismissed from his post at Columbia University due to his pacifist beliefs, and from that point he lectured at various venues on both comparative literature and Soviet drama, in which he developed an expertise.

Dana was also interested in his family history and in the history of the Longfellow house. He researched the genealogy of both sides of his family and wrote many articles about his famous ancestors and about the house. He also did a great deal of research on the life and works of Washington Allston, intending to write a biography of him. This work was never finished, although selected chapters were published by the Cambridge Historical Society. Dana contributed notes for a Washington Allston exhibit mounted by the Detroit Institute of Arts and the Boston Museum of Fine Arts in 1947 and collaborated with Detroit's Edgar Preston Richardson on a catalogue raisonné of the existing and recorded paintings of Washington Allston. In 1943 Dana prepared and delivered a lecture (illustrated with lantern slides included in this collection) on Washington Allston in honor of the centennial of Allston's death.

Upon the death of his father in 1931, H.W.L. Dana became the trustee of the Washington Allston Trust, a fund which had arisen from shares purchased by Allston's friends to support him during his twenty-six-year work on his masterpiece *Belshazzar's Feast*. Dana consequently inherited the stewardship of Allston's works which had remained unfinished at the time of his death. Dana was also responsible for the fund, which was earmarked for the preservation of the works and for the purchase of others as they became available. The Allston works belonging to the trust and some belonging to the Dana family had been deposited at the Museum of Fine Arts in Boston. In 1941 the museum requested they be removed. Harry entered into correspondence with many museums and repositories across the country trying to find a suitable place for the collection. Meanwhile, they were temporarily housed in the Longfellow house and then in Harvard University's Fogg Art Museum, with the hope that ultimately they would all go there. Shortly

⁶Information for this biography came from four letters written by Henry Wadsworth Longfellow Dana: 1) to Robert Rosegrant, 1 February 1941; 2) to Mr. Eliot, 21 March 1942; 3) to Anna Wells Rutledge, 21 March 1942; and 4) to Mrs. Howell, 6 April 1950. These letters can be found in Series IV. Trust. See also the *Finding Aid for the Henry Wadsworth Longfellow (1881-1950) Papers, 1744-1971 (bulk dates 1850-1950)*.

thereafter, however, the Fogg received a large collection and only had space for a few of the Allstons. Finally, in 1956, six years after the death of H.W.L. Dana, the Allston works were distributed among eight public collections.

PART 3:

COLLECTION LISTING

*Figure 5: Washington Allston, Washington Irving, 1805.
Photograph from Longfellow National Historic Site,
Washington Allston Materials (LONG 20258), box 14.*



Series I. Biography (LONG 20258)

Box 1 (5.0" legal size)

Folder:

1. Washington Allston, 1779-1843, romantic poet and painter, 1927-1947⁷
2. Magazines, galley proofs, 1944-1948
3. *Washington Allston* by H.W.L. Dana
4. Allston, 1925-1945⁸
5. Allston -- lock of hair
6. Flagg, [1947?]
7. Charleston, SC, 1940-1949
8. Clippings on Allston, 1839-1947⁹
9. Letters, 1947-1950 [South Carolina]¹⁰
10. Cambridge Historical Society, 1948

Box 2 (5.0" legal size)

Folder:

1. Books and biographies of Allston, 1945-1960
2. Books and biographies of Allston, 1945-1960; notebook formerly containing extract publications of the Whitney Museum of Art, et al
3. Allston at Harvard, 1796-1880¹¹
4. Allston in Newport, 1938-1947¹²
5. Portraits of Allston, 1889-1946¹³
6. Town of Allston [Massachusetts], 1919-1943
7. "Allston," 1946-1949¹⁴
8. Symphony Hall exhibition, 1945-1947¹⁵
- 8a. Photostats of Allston annotations in Dunlap *History of the ... Arts*, n.d.¹⁶

Series II. Works (part of LONG 20258)

9. Spenser, Edmund -- publications, correspondence, 1942-1944¹⁷

⁷Photograph removed to box 13, folder 1.

⁸Photographs removed to box 13, folders 2-8.

⁹Includes book (LONG 14503). Oversize items removed to box 18, folders 1-2.

¹⁰Photographs removed to box 13, folders 9-12.

¹¹Photograph removed to box 13, folder 13.

¹²Photographs removed to box 13, folders 14-19.

¹³Photographs removed to box 13, folders 20-39.

¹⁴Photograph removed to box 13, folder 40.

¹⁵Includes bulletins (LONG 14540-14543).

¹⁶It is unclear where the original volume is currently located. Photostats removed from 1918 edition of William Dunlap's *History of the Rise and Progress of the Arts of Design in the United States*, Vol. 2 (LONG 14513).

¹⁷Photographs removed to box 13, folders 1-44.

10. Coleridge, Samuel Taylor -- notebooks, correspondence, 1938-1947¹⁸
11. Magazine, bulletins, 1850¹⁹

Box 3 (5.0" legal size)

Folder:

1. Monaldi, 1848-1948
2. Magazines, 1843
3. Magazines, 1947
4. Magazines, 1944-1956
5. Catalogs, magazine tear sheets, 1936-1945
6. Broadside, n.d. [ca. 1860s]²⁰
7. Magazine, correspondence, 1944-1948
8. Manuscript, 1947
9. Magazine reprint, 1960
10. Allston exhibition, 1947-1948 (Part 1 of 2)²¹
11. Allston exhibition, 1947-1948 (Part 2 of 2)²²
12. Allston's *Uriel*, 1908-1966²³
13. Allston's *Prometheus*, 1941²⁴

Box 4 (5.0" legal size)

Folder:

1. Caricatures, 1941-1948²⁵
2. *Six Heads*, ca. 1942²⁶
3. Paintings, sketches, 1932-1964²⁷
4. Woman subjects, 1931-1950²⁸
5. Allston works in England, 1944-1948²⁹
6. Dante, 1944³⁰
7. Miscellaneous, 1948-1949 [College Art Association]³¹
8. Allston exhibition catalogs, 1839-1881³²
9. Literary subjects, 18th century, 1941-1949³³

¹⁸Photographs removed to box 13, folders 45-49.

¹⁹Photograph removed to box 13, folder 50.

²⁰Oversize item(s) removed to box 18, folder 3.

²¹Photograph removed to box 13, folder 51. Oversize item(s) removed to box 18, folder 4.

²²Includes catalog (LONG 14497).

²³Photograph removed to box 13, folder 52.

²⁴Photographs removed to box 13, folders 53-54 and to box 16, folder 3.

²⁵Photographs removed to box 13, folders 55-63.

²⁶Photographs removed to box 13, folders 64-65.

²⁷Photographs removed to box 13, folders 66-68.

²⁸Photographs removed to box 13, folders 69-90.

²⁹Oversize item(s) removed to box 18, folder 5.

³⁰Photographs removed to box 13, folders 91-93.

³¹Includes journal (LONG 14538).

³²Includes catalogs (LONG 14522-14523).

10. Literary subjects, 19th century, 1947-1948
11. Miscellaneous pictures of Allston's paintings, n.d.³⁴
12. Catalog, 1934-1947
13. Milton subjects, n.d.
14. Unnamed men, 1924-1946³⁵
15. Portraits of men, 1922-1949³⁶
16. W. Allston letters, 1800
17. W. Allston letters, 1801
18. W. Allston letters, 1814
19. W. Allston letters, 1818
20. W. Allston letters, 1819
21. W. Allston letters, 1820s
22. W. Allston letters, 1832
23. W. Allston letters, 1836
24. W. Allston letters, 1837
25. W. Allston letters, 1839

Box 5 (5.0" legal size)

Folder:

1. W. Allston letters, 1842
2. *Allston's Dreamy Women*, 1831-1947³⁷
3. *The Paint King*, 1942-1946³⁸
4. Italian landscapes, 1943-1948³⁹
5. Swiss landscapes, n.d.⁴⁰
6. Classical subjects: Greek, 1918-1948⁴¹
7. New Testament, 1891-1948⁴²
8. Unnamed women, 1948⁴³
9. *Buck's Progress*, 1948⁴⁴
10. Ships, 1944-1947/45
11. Old Testament, 1915-1949⁴⁶

³³Photographs removed to box 13, folders 94-102.

³⁴Photographs removed to box 13, folders 103-108 and to box 14, folders 1-40. Oversize item(s) removed to box 18, folder 6.

³⁵Photographs removed to box 14, folders 41-45.

³⁶Photographs removed to box 14, folders 46-57.

³⁷Photographs removed to box 14, folders 58-69.

³⁸Photographs removed to box 14, folders 70-71.

³⁹Photographs removed to box 14, folders 72-88.

⁴⁰Photographs removed to box 14, folders 89-95.

⁴¹Photographs removed to box 14, folders 96-106.

⁴²Photographs removed to box 14, folders 107-109 and to box 15, folders 1-9.

⁴³Photographs removed to box 15, folders 10-13.

⁴⁴Photographs removed to box 15, folders 14-19.

⁴⁵Photographs removed to box 15, folders 20-29.

⁴⁶Photographs removed to box 15, folders 30-47.

12. Prints, 1944-1955⁴⁷
13. Letters and pictures, 1942-1949⁴⁸
14. *Belshazzar's Feast*, 1844-1949⁴⁹
- 15a. Editorial re: Allston Poetry, 1840⁵⁰

Series III. Friends (part of LONG 20258)

15. Tieck, Johann Ludwig, 1929⁵¹
16. Coleridge, 1934-1950, Part 1⁵²
17. Coleridge, 1934-1950, Part 2⁵³

Box 6 (5.0" legal size)

Folder:

1. Friends, A, 1945-1947
2. Friends, B, 1906-1945
3. Friends, C, 1945-1949
4. Friends, D, 1843-1946⁵⁴
5. Friends, E-G, 1945-1946
6. Friends, Washington Irving (1785-1859), 1928-1947⁵⁵
7. Friends, J-L, 1946-1948
8. Friends, M, 1948⁵⁶
9. Friends, S.F.B. Morse, 1807-1949
10. Friends, R-S, 1923-1945⁵⁷
11. Friends, John Vanderlyn, 1945-1959
12. Friends, W, 1861-1947⁵⁸

Series IV. Trust (part of LONG 20258)

13. Purchasers, 1942-1944⁵⁹

⁴⁷Photographs removed to box 15, folders 48-56.

⁴⁸Photographs removed to box 15, folders 57-63.

⁴⁹Photographs removed to box 15, folders 64-68.

⁵⁰LONG 25612.

⁵¹Photograph removed to box 15, folders 96.

⁵²Photographs removed to box 15, folders 69-72. Oversize item(s) removed to box 18, folder 7.

⁵³Photographs removed to box 15, folders 73-76.

⁵⁴Photographs removed to box 15, folders 77-80.

⁵⁵Photographs removed to box 15, folders 81-84.

⁵⁶Photograph removed to box 15, folder 85.

⁵⁷Photographs removed to box 15, folders 86-89.

⁵⁸Photographs removed to box 15, folders 90-95 and to box 16, folder 4.

⁵⁹Includes address book (LONG 14537).

14. M.F.A., Boston, 1939-1948
15. A (museums), 1942-1947
16. B (museums), 1942-1949⁶⁰
17. C (museums), 1941-1948⁶¹

Box 7 (2.5" legal size)

Folder:

1. C (museums), 1942-1949⁶²
2. D (museums), 1942-1946⁶³
3. E, F, and K (museums), 1941-1950
4. M (museums), 1941-1947
5. Museum of Modern Art, 1943-1946
6. N and O (museums), 1941-1946
7. O and P (museums), 1942-1946
8. R-Z (museums), 1942-1944
9. College Art Assn., et al, 1920-1948⁶⁴

Series V. Binders re: A) Biography, B) Works, and C) Friends (part of LONG 20258)

A. Biography

Box 8 (5.0" letter size)

Folder:

1. "Boyhood in South Carolina, 1779-1787"
2. "Allston in South Carolina"
3. "Allston in Newport"
4. "Allston at Harvard"
5. "Allston in Italy"
6. "Allston in Boston, 1818-1830"
7. "Allston in Cambridgeport"
8. "Allston's Death -- 1843"
9. "Allston in Cambridgeport"
10. "Brookgreen"
11. "Allston I"

Box 9 (5.0" letter size)

Folder:

1. "Allston II," Part 1

⁶⁰Photographs removed to box 15, folders 96.

⁶¹Includes bulletin (LONG 14539) and book (LONG 14546).

⁶²Includes catalogs (LONG 14547-14548).

⁶³Includes book (LONG 14545).

⁶⁴Photographs removed to box 15, folders 97-100.

2. "Allston II," Part 2
3. "Allston Letters I, 1779-1811, Youth," Part 1
4. "Allston Letters I, 1779-1811, Youth," Part 2
5. "Allston II, 1811-1818, England," Part 1
6. "Allston II, 1811-1818, England," Part 2
7. "Allston Letters III, 1818-1830, Boston," Part 1
8. "Allston Letters III, 1818-1830, Boston," Part 2
9. "Allston IV, 1830-1843, Cambridgeport," Part 1
10. "Allston IV, 1830-1843, Cambridgeport," Part 2

Box 10 (5.0" letter size)

Folder:

1. "Allston Notes," Part 1
2. "Allston Notes," Part 2

B. Works

3. "Allston Pictures, Bible & Classics," Part 1
4. "Allston Pictures, Bible & Classics," Part 2
5. "Allston Pictures, Literature"
6. "Allston Portraits," Part 1
7. "Allston Portraits," Part 2
8. "Allston Portraits," Part 1

Box 11 (2.5" letter size)

Folder:

1. "Allston Portraits," Part 2

C. Friends

2. Untitled
3. "Allston's Friends," Part 1
4. "Allston's Friends," Part 2

Series VI. Index Cards (part of LONG 20258)

Box 12 (L 5.0", H 3.0", D 12.25" index card box????)

- Index cards regarding Allston's works.

Series VII. Photographs and Negatives (part of LONG 20258)

Box 13 (L 11.0", H 4.5", W 9.0" photograph box)

Envelope:

1. Photograph⁶⁵ -- artwork: portrait, Gov. Robert F.W. Allston
2. Photograph⁶⁶ -- artwork: portrait, *Thomas Allston* of Prospect Hill
3. Photograph⁶⁷ -- drawing room at Fairfield
4. Photograph⁶⁸ -- artwork: portrait, *Mrs. William Allston, Esther LaBrosse de Marboeuf*
5. Photograph⁶⁹ -- artwork: self-portrait, *Washington Allston* of Brookgreen
6. Photograph⁷⁰ -- artwork: portrait, *William Algernon Alston* of Rose Hill
7. Negative⁷¹ -- artwork: portrait, *Thomas Allston* of Prospect Hill
8. Negative⁷² -- artwork: portrait, *Gov. Robert F.W. Allston*
9. Photograph⁷³ -- Brookgreen Gardens, S.C.--the Boxwood Garden
10. Photograph⁷⁴ -- Brookgreen Avenue looking west
11. Photograph⁷⁵ -- Brookgreen Garden with sculptures
12. Photograph⁷⁶ -- Brookgreen Avenue looking east
13. Photograph⁷⁷ -- mansion of Dr. Benj. Waterhouse--Cambridge
14. Photograph⁷⁸ -- artwork: portrait, *Robert Rogers*, Newport, RI, schoolmaster
15. Photograph⁷⁹ -- Wilcox House, Newport, RI; detail of exterior sign
16. Photograph⁸⁰ -- Wilcox House, Newport, RI; exterior
17. Photograph⁸¹ -- artwork: portrait, *Gilbert Stuart*, 1778
18. Photograph⁸² -- marble table designed by Washington Allston for Mrs. George Gibbs
19. Photograph⁸³ -- memorial to Mr. and Mrs. George Gibbs in St. Mary's Church, Portsmouth, RI
20. Photograph⁸⁴ -- artwork: portrait, *Washington Allston*

⁶⁵Removed from box 1, folder 1.

⁶⁶Removed from box 1, folder 4.

⁶⁷Removed from box 1, folder 4.

⁶⁸Removed from box 1, folder 4.

⁶⁹Removed from box 1, folder 4.

⁷⁰Removed from box 1, folder 4.

⁷¹Removed from box 1, folder 4.

⁷²Removed from box 1, folder 4.

⁷³Removed from box 1, folder 9.

⁷⁴Removed from box 1, folder 9.

⁷⁵Removed from box 1, folder 9.

⁷⁶Removed from box 1, folder 9.

⁷⁷Removed from box 2, folder 3.

⁷⁸Removed from box 2, folder 4.

⁷⁹Removed from box 2, folder 4.

⁸⁰Removed from box 2, folder 4.

⁸¹Removed from box 2, folder 4.

⁸²Removed from box 2, folder 4.

⁸³Removed from box 2, folder 4.

⁸⁴Removed from box 2, folder 5.

21. Photograph⁸⁵ -- artwork: self-portrait, *Washington Allston*
22. Photograph⁸⁶ -- artwork: self-portrait, *Washington Allston*
23. Photograph⁸⁷ -- artwork: portrait, *Washington Allston* by Gilbert Stuart
24. Photograph⁸⁸ -- artwork: portrait, *Washington Allston*
25. Photograph⁸⁹ -- artwork: *Gilbert Stuart* and his family
26. Photograph⁹⁰ -- artwork: portrait, *Washington Allston* by Edward Greene Malbone, ca. 1798
27. Photograph⁹¹ -- bust of Washington Allston at the Carolina Art Association by Edward Augustus Brackett, ca. 1843-1844
28. Photograph⁹² -- artwork: portrait, *Washington Allston*, by Richard Staigg, ca. 1840
29. Photograph⁹³ -- artwork: portrait, *Washington Allston*, by Benjamin Trott
30. Photograph⁹⁴ -- artwork--self-portrait, *Washington Allston*
31. Photograph⁹⁵ -- artwork: portrait, *Washington Allston* as a young man
32. Photograph⁹⁶ -- artwork: *Gilbert Stuart* and his family
33. Photograph⁹⁷ -- artwork: portrait, *Washington Allston* by Joseph Alexander Ames
34. Photograph⁹⁸ -- artwork: portrait, *Washington Allston* by Chester Harding
35. Photograph⁹⁹ -- artwork: portrait, *Washington Allston* by Chester Harding
36. Photograph¹⁰⁰ -- artwork: portrait, *Washington Allston*
37. Photograph¹⁰¹ -- artwork: portrait, *Washington Allston* by Richard Staigg, ca. 1840
38. Photograph¹⁰² -- artwork: portrait, *Washington Allston* by Richard Staigg, ca. 1840
39. Photograph¹⁰³ -- artwork: portrait, *Washington Allston*
40. Photograph¹⁰⁴ -- artwork: seascape, ca. 1814
41. Photograph¹⁰⁵ -- artwork: pencil sketch of Camp of the Adirondac [*sic*] Club, Follansbee Lake, 1857, by William J. Stillman

⁸⁵Removed from box 2, folder 5.

⁸⁶Removed from box 2, folder 5.

⁸⁷Removed from box 2, folder 5.

⁸⁸Removed from box 2, folder 5.

⁸⁹Removed from box 2, folder 5.

⁹⁰Removed from box 2, folder 5.

⁹¹Removed from box 2, folder 5.

⁹²Removed from box 2, folder 5.

⁹³Removed from box 2, folder 5.

⁹⁴Removed from box 2, folder 5.

⁹⁵Removed from box 2, folder 5.

⁹⁶Removed from box 2, folder 5.

⁹⁷Removed from box 2, folder 5.

⁹⁸Removed from box 2, folder 5.

⁹⁹Removed from box 2, folder 5.

¹⁰⁰Removed from box 2, folder 5.

¹⁰¹Removed from box 2, folder 5.

¹⁰²Removed from box 2, folder 5.

¹⁰³Removed from box 2, folder 5.

¹⁰⁴Removed from box 2, folder 7.

¹⁰⁵Removed from box 2, folder 9.

42. Negative¹⁰⁶ -- artwork: pencil sketch of Camp of the Adirondac [*sic*] Club, Follansbee Lake, 1857 by William J. Stillman
43. Photograph¹⁰⁷ -- artwork: pencil sketch of Camp of the Adirondac [*sic*] Club, Follansbee Lake, 1857 by William J. Stillman
44. Negative¹⁰⁸ -- artwork: pencil sketch of Camp of the Adirondac [*sic*] Club, Follansbee Lake, 1857 by William J. Stillman
45. Negative¹⁰⁹ -- artwork ; portrait, *Esther La Brosse de Marboeuf, Mrs. William Allston*
46. Negative¹¹⁰ -- drawing room at Fairfield
47. Negative¹¹¹ -- artwork: *William Alston* of Clifton
48. Photograph¹¹² -- artwork: *William Alston* of Clifton
49. Photograph¹¹³ -- handwritten notes [possibly those of Coleridge]
50. Photograph¹¹⁴ -- artwork: *The Angel Uriel*, detail from *Uriel in the Sun* by Washington Allston, 1817
51. Photograph¹¹⁵ -- Allston's Studio, Cambridgeport, at corner of Magazine and Auburn Streets
52. Photograph¹¹⁶ -- artwork: *The Angel Uriel*, detail from *Uriel in the Sun* by Washington Allston, 1817
53. Photograph¹¹⁷ -- artwork: *Prometheus* by Washington Allston
54. Photograph¹¹⁸ -- artwork: *Prometheus* by Washington Allston
55. Photograph¹¹⁹ -- artwork: urban street scene [possibly from *The Buck's Progress*]
56. Photograph¹²⁰ -- artwork: caricature, *Joseph Willard* (president of Harvard College) by Washington Allston, 1798
57. Photograph¹²¹ -- artwork: scene in an Eating-House [H.W.L. Dana annotation]
58. Photograph¹²² -- the back of *The Tippler*
59. Photograph¹²³ -- artwork: scene in an Eating-House [H.W.L. Dana annotation]
60. Photograph¹²⁴ -- artwork: rich bookseller [H.W.L. Dana annotation]

¹⁰⁶Removed from box 2, folder 9.

¹⁰⁷Removed from box 2, folder 9.

¹⁰⁸Removed from box 2, folder 9.

¹⁰⁹Removed from box 2, folder 10.

¹¹⁰Removed from box 2, folder 10.

¹¹¹Removed from box 2, folder 10.

¹¹²Removed from box 2, folder 10.

¹¹³Removed from box 2, folder 10.

¹¹⁴Removed from box 2, folder 11.

¹¹⁵Removed from box 3, folder 10.

¹¹⁶Removed from box 3, folder 12.

¹¹⁷Removed from box 3, folder 13.

¹¹⁸Removed from box 3, folder 13.

¹¹⁹Removed from box 4, folder 1.

¹²⁰Removed from box 4, folder 1.

¹²¹Removed from box 4, folder 1.

¹²²Removed from box 4, folder 1.

¹²³Removed from box 4, folder 1.

¹²⁴Removed from box 4, folder 1.

61. Photograph¹²⁵ -- artwork: poor author and rich bookseller [H.W.L. Dana annotation]
62. Photograph¹²⁶ -- the back of *The Tippler*
63. Photograph¹²⁷ -- the back of *The Tippler*
64. Photograph¹²⁸ -- artwork: studies of figures and draperies for *The Angel Releasing St. Peter*
65. Photograph¹²⁹ -- artwork: sketches
66. Photograph¹³⁰ -- artwork: *Saul and the Witch of Endor* by Washington Allston, ca. 1820
67. Photograph¹³¹ -- artwork: *A Schepen Doing Duty to a Burgomaster's Joke*, 1818
68. Photograph¹³² -- artwork: *Prometheus* by Washington Allston
69. Photograph¹³³ -- artwork: study for *Mother and Child* [H.W.L. Dana notation]
70. Photograph¹³⁴ -- artwork: *Eastern Temple Figure, Standing* by Washington Allston
71. Photograph¹³⁵ -- artwork: *Mother and Child* by Washington Allston
72. Photograph¹³⁶ -- artwork: *Infant and Parents* by Washington Allston
73. Photograph¹³⁷ -- artwork: *Portrait of a Woman* by Washington Allston
74. Photograph¹³⁸ -- artwork: *Unfinished Female Head* by Washington Allston
75. Photograph¹³⁹ -- artwork: *Beatrice* by Washington Allston, 1819
76. Photograph¹⁴⁰ -- artwork: *Dido and Anna* by Washington Allston
77. Photograph¹⁴¹ -- artwork: *The Evening Hymn* by Washington Allston, 1835
78. Photograph¹⁴² -- artwork: *The Sisters* by Washington Allston, 1817
79. Photograph¹⁴³ -- artwork: *The Sisters* by Washington Allston, 1817
80. Photograph¹⁴⁴ -- artwork: *Mother Watching Her Child* by Washington Allston, 1814
81. Photograph¹⁴⁵ -- artwork: *Miriam the Prophetess* by Washington Allston
82. Photograph¹⁴⁶ -- artwork: *Female Figure Seated on a Bank* by Washington Allston
83. Photograph¹⁴⁷ -- artwork: *Una (A Sketch)* by Washington Allston

¹²⁵Removed from box 4, folder 1.

¹²⁶Removed from box 4, folder 1.

¹²⁷Removed from box 4, folder 1.

¹²⁸Removed from box 4, folder 2.

¹²⁹Removed from box 4, folder 2.

¹³⁰Removed from box 4, folder 3.

¹³¹Removed from box 4, folder 3.

¹³²Removed from box 4, folder 3.

¹³³Removed from box 4, folder 4.

¹³⁴Removed from box 4, folder 4.

¹³⁵Removed from box 4, folder 4.

¹³⁶Removed from box 4, folder 4.

¹³⁷Removed from box 4, folder 4.

¹³⁸Removed from box 4, folder 4.

¹³⁹Removed from box 4, folder 4.

¹⁴⁰Removed from box 4, folder 4.

¹⁴¹Removed from box 4, folder 4.

¹⁴²Removed from box 4, folder 4.

¹⁴³Removed from box 4, folder 4.

¹⁴⁴Removed from box 4, folder 4.

¹⁴⁵Removed from box 4, folder 4.

¹⁴⁶Removed from box 4, folder 4.

84. Photograph¹⁴⁸ -- artwork: *Lady Seated on a Bank* by Washington Allston
85. Photograph¹⁴⁹ -- artwork: *The Tuscan Maid* by Washington Allston, 1831
86. Photograph¹⁵⁰ -- artwork: *Una Sleeping in a Wood* by Washington Allston
87. Photograph¹⁵¹ -- artwork: *A Sibyl* by Washington Allston
88. Photograph¹⁵² -- artwork: *A Sibyl* by Washington Allston
89. Photograph¹⁵³ -- artwork: female figure [H.W.L. Dana notation]
90. Photograph¹⁵⁴ -- artwork: *Florimel* by Washington Allston
91. Photograph¹⁵⁵ -- artwork: *Beatrice* by Washington Allston, 1819
92. Photograph¹⁵⁶ -- artwork: [*Dante's Inferno?*] by Thomas Cole
93. Photograph¹⁵⁷ -- artwork: [*Dante's Inferno?*] by Thomas Cole
94. Photograph¹⁵⁸ -- artwork: *Spalatro's Vision of the Bloody Hand* by Washington Allston, 1831
95. Photograph¹⁵⁹ -- artwork: *Danger* by Washington Allston, ca. 1811-1818
96. Photograph¹⁶⁰ -- artwork: *Robbers Fighting With Each Other for the Spoils Over a Murdered Traveller* by Washington Allston, 1801
97. Photograph¹⁶¹ -- artwork: *Dido and Anna* by Washington Allston
98. Photograph¹⁶² -- artwork: *Donna Mencia in the Robbers Cave* by Washington Allston, 1815
99. Photograph¹⁶³ -- artwork: portrait, *Amy Robsart* by Washington Allston, 1840
100. Photograph¹⁶⁴ -- artwork: *Elijah Fed by the Ravens* by Washington Allston
101. Photograph¹⁶⁵ -- artwork: *Donna Mencia in the Robbers Cave* by Washington Allston, 1815
102. Photograph¹⁶⁶ -- artwork: group portrait of unidentified men, standing, referring to a document
103. Photograph¹⁶⁷ -- artwork: *Landscape* by Washington Allston

¹⁴⁷Removed from box 4, folder 4.

¹⁴⁸Removed from box 4, folder 4.

¹⁴⁹Removed from box 4, folder 4.

¹⁵⁰Removed from box 4, folder 4.

¹⁵¹Removed from box 4, folder 4.

¹⁵²Removed from box 4, folder 4.

¹⁵³Removed from box 4, folder 4.

¹⁵⁴Removed from box 4, folder 4.

¹⁵⁵Removed from box 4, folder 6.

¹⁵⁶Removed from box 4, folder 6.

¹⁵⁷Removed from box 4, folder 6.

¹⁵⁸Removed from box 4, folder 9.

¹⁵⁹Removed from box 4, folder 9.

¹⁶⁰Removed from box 4, folder 9.

¹⁶¹Removed from box 4, folder 9.

¹⁶²Removed from box 4, folder 9.

¹⁶³Removed from box 4, folder 9.

¹⁶⁴Removed from box 4, folder 9.

¹⁶⁵Removed from box 4, folder 9.

¹⁶⁶Removed from box 4, folder 9.

¹⁶⁷Removed from box 4, folder 11.

104. Photograph¹⁶⁸ -- artwork: *Lorenzo and Jessica* or *Romeo and Juliet* by Washington Allston [shows a man playing a lute to a seated woman]
105. Photograph¹⁶⁹ -- artwork: a seated woman; framed painting placed in front of a stone wall [tags with the numbers "5" and "3" are visible above the painting]
106. Photograph¹⁷⁰ -- artwork: *Italian Shepherd Boy* by Washington Allston, 1819
107. Photograph¹⁷¹ -- artwork: *Italian Shepherd Boy* by Washington Allston, 1819
108. Photograph¹⁷² -- artwork: portrait, *The Artist's Mother, Rachel Moore Allston Flagg* by Washington Allston, 1809

Box 14 (L 11.0", H 4.5", W 9.0" photograph box)

Envelope:

1. Photograph¹⁷³ -- artwork: portrait, *Mrs. Timothy Waterhouse*, ca. 1796-1797
2. Photograph¹⁷⁴ -- artwork: portrait, *Ann Channing Allston*, ca. 1809-1811
3. Photograph¹⁷⁵ -- artwork: portrait, *Mrs. Sarah Kemble Siddons*
4. Photograph¹⁷⁶ -- artwork: portrait of a young man by Washington Allston
5. Photograph¹⁷⁷ -- artwork: portrait, *James K. Bogert, Jr.*
6. Photograph¹⁷⁸ -- artwork: portrait, *Francis Dana Channing* by Washington Allston, ca. 1810
7. Photograph¹⁷⁹ -- artwork: portrait, *Francis Dana Channing* by Washington Allston, ca. 1810
8. Photograph¹⁸⁰ -- artwork: portrait, *Benjamin West* by Washington Allston, 1814
9. Photograph¹⁸¹ -- artwork: portrait, *Samuel Williams* by Washington Allston, 1812
10. Photograph¹⁸² -- artwork: portrait, *Benjamin West* by Washington Allston, 1814
11. Photograph¹⁸³ -- artwork: *The Student*
12. Photograph¹⁸⁴ -- artwork: portrait, *Rev. William Ellery Channing* by Washington Allston [two copies of the same portrait on one photograph]
13. Photograph¹⁸⁵ -- artwork: portrait, *General William Heath*

¹⁶⁸Removed from box 4, folder 11.

¹⁶⁹Removed from box 4, folder 11.

¹⁷⁰Removed from box 4, folder 11.

¹⁷¹Removed from box 4, folder 11.

¹⁷²Removed from box 4, folder 11.

¹⁷³Removed from box 4, folder 11.

¹⁷⁴Removed from box 4, folder 11.

¹⁷⁵Removed from box 4, folder 11.

¹⁷⁶Removed from box 4, folder 11.

¹⁷⁷Removed from box 4, folder 11.

¹⁷⁸Removed from box 4, folder 11.

¹⁷⁹Removed from box 4, folder 11.

¹⁸⁰Removed from box 4, folder 11.

¹⁸¹Removed from box 4, folder 11.

¹⁸²Removed from box 4, folder 11.

¹⁸³Removed from box 4, folder 11.

¹⁸⁴Removed from box 4, folder 11.

¹⁸⁵Removed from box 4, folder 11.

14. Photograph¹⁸⁶ -- artwork: self-portrait, *Washington Allston*, ca. 1798
15. Photograph¹⁸⁷ -- artwork: self-portrait, *Washington Allston*, ca. 1805
16. Photograph¹⁸⁸ -- artwork: portrait, *John Harris*
17. Photograph¹⁸⁹ -- artwork: portrait, *Washington Irving* by Washington Allston
18. Photograph¹⁹⁰ -- artwork: portrait, *Andrew Jackson* by Washington Allston
19. Photograph¹⁹¹ -- artwork: portrait, *Robert Rogers* [Newport, RI, schoolmaster] by Washington Allston, ca. 1800
20. Photograph¹⁹² -- artwork: portrait, *Edwin Plummer* by Washington Allston, ca. 1820
21. Photograph¹⁹³ -- artwork: portrait, *Bushrod Washington* by Washington Allston
22. Photograph¹⁹⁴ -- artwork: *Gil Blas Securing the Cook in the Robbers Cave* by John Opie
23. Photograph¹⁹⁵ -- artwork: frightened people with demons and fleeing angels [possibly based on Dante's *Inferno*]
24. Photograph¹⁹⁶ -- artwork: *A Scene in an Eating House*, ca. 1813
25. Photograph¹⁹⁷ -- artwork: *Donna Mencia in the Robbers Cave* by Washington Allston, 1815
26. Photograph¹⁹⁸ -- artwork: *Jeremiah Dictating His Prophecy of the Destruction of Jerusalem to Baruch the Scribe* by Washington Allston, 1820
27. Photograph¹⁹⁹ -- artwork: *Study of the Head of Jeremiah* by Washington Allston, 1819
28. Photograph²⁰⁰ -- artwork: *Angel Appearing to St. Peter in Prison* [study]
29. Photograph²⁰¹ -- artwork: *Angel Delivering St. Peter from Prison* by Washington Allston
30. Photograph²⁰² -- artwork: *Tragic Figure in Chains* [study]
31. Photograph²⁰³ -- artwork: study of head with two inscriptions by Washington Allston: Presented by Mrs Chas Bradley/To The Rhode Island/School of Design/Dec 1899." and "W.Allston-pinxt"
32. Photograph²⁰⁴ -- artwork: *Study for Jason* by Washington Allston
33. Photograph²⁰⁵ -- artwork: *Ideal Head (Head of the Angel)*, ca. 1813-1815

¹⁸⁶Removed from box 4, folder 11.

¹⁸⁷Removed from box 4, folder 11.

¹⁸⁸Removed from box 4, folder 11.

¹⁸⁹Removed from box 4, folder 11.

¹⁹⁰Removed from box 4, folder 11.

¹⁹¹Removed from box 4, folder 11.

¹⁹²Removed from box 4, folder 11.

¹⁹³Removed from box 4, folder 11.

¹⁹⁴Removed from box 4, folder 11.

¹⁹⁵Removed from box 4, folder 11.

¹⁹⁶Removed from box 4, folder 11.

¹⁹⁷Removed from box 4, folder 11.

¹⁹⁸Removed from box 4, folder 11.

¹⁹⁹Removed from box 4, folder 11.

²⁰⁰Removed from box 4, folder 11.

²⁰¹Removed from box 4, folder 11.

²⁰²Removed from box 4, folder 11.

²⁰³Removed from box 4, folder 11.

²⁰⁴Removed from box 4, folder 11.

34. Photograph²⁰⁶ -- artwork: *Study for Twelfth Night*
35. Photograph²⁰⁷ -- artwork: *Jason* by Washington Allston
36. Photograph²⁰⁸ -- artwork: *Lorenzo and Jessica* by Washington Allston, 1832
37. Photograph²⁰⁹ -- artwork: *Macbeth* by Washington Allston
38. Photograph²¹⁰ -- artwork: *Michael Setting the Watch (Or Gabriel Setting the Watch)* by Washington Allston
39. Photograph²¹¹ -- artwork: *Opening of the Casket* by Washington Allston, 1807
40. Photograph²¹² -- artwork: *Quarrel of Achilles with Agememnon* by Washington Allston
41. Photograph²¹³ -- artwork: *Portrait of a Man* by Washington Allston
42. Photograph²¹⁴ -- artwork: *Man in a Green Coat*
43. Photograph²¹⁵ -- artwork: *Man in a Green Coat*
44. Photograph²¹⁶ -- artwork: *The Student* by Washington Allston
45. Photograph²¹⁷ -- artwork: *Studies of Figures and Drapery for The Angel Releasing St. Peter* by Washington Allston, ca. 1813-1815
46. Photograph²¹⁸ -- artwork: portrait, *Samuel Hammond* by Washington Allston
47. Photograph²¹⁹ -- artwork: portrait, *General William Heath* by Washington Allston
48. Photograph²²⁰ -- artwork: portrait, *Rev. William Ellery Channing* by Washington Allston
49. Photograph²²¹ -- artwork: portrait, *Rev. William Ellery Channing* by Washington Allston
50. Photograph²²² -- artwork: portrait, *Captain Pray*
51. Photograph²²³ -- artwork: portrait, *Andrew Jackson* by Washington Allston
52. Photograph²²⁴ -- artwork: portrait, *Benjamin West* by Washington Allston
53. Photograph²²⁵ -- artwork: portrait, *Samuel Williams* by Washington Allston, 1812
54. Photograph²²⁶ -- artwork: portrait, *Benjamin West* by Washington Allston
55. Photograph²²⁷ -- artwork: portrait, *Benjamin West* by Washington Allston

²⁰⁵Removed from box 4, folder 11.

²⁰⁶Removed from box 4, folder 11.

²⁰⁷Removed from box 4, folder 11.

²⁰⁸Removed from box 4, folder 11.

²⁰⁹Removed from box 4, folder 11.

²¹⁰Removed from box 4, folder 11.

²¹¹Removed from box 4, folder 11.

²¹²Removed from box 4, folder 11.

²¹³Removed from box 4, folder 14.

²¹⁴Removed from box 4, folder 14.

²¹⁵Removed from box 4, folder 14.

²¹⁶Removed from box 4, folder 14.

²¹⁷Removed from box 4, folder 14.

²¹⁸Removed from box 4, folder 15.

²¹⁹Removed from box 4, folder 15.

²²⁰Removed from box 4, folder 15.

²²¹Removed from box 4, folder 15.

²²²Removed from box 4, folder 15.

²²³Removed from box 4, folder 15.

²²⁴Removed from box 4, folder 15.

²²⁵Removed from box 4, folder 15.

²²⁶Removed from box 4, folder 15.

56. Photograph²²⁸ -- artwork: portrait, *John Hancock*
57. Photograph²²⁹ -- artwork: portrait, *Samuel Hammond*
58. Photograph²³⁰ -- artwork: *Italian Shepherd Boy* by Washington Allston, 1819
59. Photograph²³¹ -- artwork: *A Spanish Girl* by Washington Allston, 1831
60. Photograph²³² -- artwork: *The Tuscan Maid* by Washington Allston, 1831
61. Photograph²³³ -- artwork: *A Troubadour* by Washington Allston
62. Photograph²³⁴ -- artwork: portrait of an unidentified boy, seated; framed painting placed in front of bookshelves
63. Photograph²³⁵ -- artwork: portrait of an unidentified boy, seated; framed painting placed in front of bookshelves
64. Photograph²³⁶ -- artwork: *Italian Shepherd Boy* by Washington Allston, 1819
65. Photograph²³⁷ -- artwork: *Italian Shepherd Boy* by Washington Allston, 1819
66. Photograph²³⁸ -- artwork: *Italian Shepherd Boy* by Washington Allston, 1819
67. Photograph²³⁹ -- artwork: *The Evening Hymn* by Washington Allston, 1835
68. Photograph²⁴⁰ -- artwork: *The Evening Hymn* by Washington Allston, 1835
69. Photograph²⁴¹ -- artwork: *The Evening Hymn* by Washington Allston, 1835
70. Photograph²⁴² -- artwork: *The Paint King of Washington Alston Illustrated*
71. Negative²⁴³ -- artwork: *The Paint King of Washington Alston Illustrated*
72. Photograph²⁴⁴ -- artwork: *Italian Landscape* by Washington Allston, ca. 1830
73. Photograph²⁴⁵ -- artwork: *Italian Landscape* by Washington Allston, ca. 1830
74. Photograph²⁴⁶ -- artwork: *Italian Landscape* by Washington Allston, ca. 1830
75. Photograph²⁴⁷ -- artwork: *Italian Landscape* by Washington Allston, 1814
76. Photograph²⁴⁸ -- artwork: *Italian Landscape* by Washington Allston, 1814
77. Photograph²⁴⁹ -- artwork: *Italian Landscape* by Washington Allston, 1814

²²⁷Removed from box 4, folder 15.

²²⁸Removed from box 4, folder 15.

²²⁹Removed from box 4, folder 15.

²³⁰Removed from box 5, folder 2.

²³¹Removed from box 5, folder 2.

²³²Removed from box 5, folder 2.

²³³Removed from box 5, folder 2.

²³⁴Removed from box 5, folder 2.

²³⁵Removed from box 5, folder 2.

²³⁶Removed from box 5, folder 2.

²³⁷Removed from box 5, folder 2.

²³⁸Removed from box 5, folder 2.

²³⁹Removed from box 5, folder 2.

²⁴⁰Removed from box 5, folder 2.

²⁴¹Removed from box 5, folder 2.

²⁴²Removed from box 5, folder 3.

²⁴³Removed from box 5, folder 3.

²⁴⁴Removed from box 5, folder 4.

²⁴⁵Removed from box 5, folder 4.

²⁴⁶Removed from box 5, folder 4.

²⁴⁷Removed from box 5, folder 4.

²⁴⁸Removed from box 5, folder 4.

78. Photograph²⁵⁰ -- artwork: *Italian Landscape, Sunset* by Washington Allston, 1821
79. Photograph²⁵¹ -- artwork: *Moonlit Landscape with Horseman* by Washington Allston
80. Photograph²⁵² -- artwork: *Moonlit Landscape with Horseman* by Washington Allston
81. Photograph²⁵³ -- artwork: *Landscape* by Washington Allston, 1798
82. Photograph²⁵⁴ -- artwork: *Italian Landscape* by Washington Allston, ca. 1805-1810
83. Photograph²⁵⁵ -- artwork: *Landscape* by Washington Allston, 1804
84. Photograph²⁵⁶ -- artwork: group portrait at evening campfire by Washington Allston, 1805
85. Photograph²⁵⁷ -- artwork: *Robbers Fighting With Each Other for the Spoils Over a Murdered Traveller* by Washington Allston, 1801
86. Photograph²⁵⁸ -- artwork: [*Italian Landscape* by Washington Allston?]
87. Photograph²⁵⁹ -- artwork: *Italian Landscape* by Washington Allston
88. Photograph²⁶⁰ -- rear mounting of canvas painting with two labels: "Landscape painted/by Washington Allston/for W. Dutton" and "MUSEUM OF FINE ARTS/Artist, Washington Allston/Subject, Landscape/Owner, Geo. M. Barnard/Date of Loan, July '81"
89. Photograph²⁶¹ -- artwork: *The Trout Stream* by Washington Allston, 1817
90. Photograph²⁶² -- artwork: *Landscape* by Washington Allston, 1804
91. Photograph²⁶³ -- artwork: *Landscape* by Washington Allston, 1804
92. Photograph²⁶⁴ -- artwork: *Landscape* by Washington Allston, ca. 1802
93. Photograph²⁶⁵ -- artwork: *Landscape* by Washington Allston, ca. 1802
94. Photograph²⁶⁶ -- artwork: *Landscape of Trees and Ruins* by Washington Allston
95. Photograph²⁶⁷ -- artwork: *Diana and her Nymphs in the Chase*, 1805
96. Photograph²⁶⁸ -- artwork: *Cupid*, 1804; framed painting placed in front of bookshelves
97. Photograph²⁶⁹ -- artwork: *Cupid*, 1804; framed painting placed in front of bookshelves
98. Photograph²⁷⁰ -- artwork: *Helidorus in the Temple*

²⁴⁹Removed from box 5, folder 4.

²⁵⁰Removed from box 5, folder 4.

²⁵¹Removed from box 5, folder 4.

²⁵²Removed from box 5, folder 4.

²⁵³Removed from box 5, folder 4.

²⁵⁴Removed from box 5, folder 4.

²⁵⁵Removed from box 5, folder 4.

²⁵⁶Removed from box 5, folder 4.

²⁵⁷Removed from box 5, folder 4.

²⁵⁸Removed from box 5, folder 4.

²⁵⁹Removed from box 5, folder 4.

²⁶⁰Removed from box 5, folder 4.

²⁶¹Removed from box 5, folder 5.

²⁶²Removed from box 5, folder 5.

²⁶³Removed from box 5, folder 5.

²⁶⁴Removed from box 5, folder 5.

²⁶⁵Removed from box 5, folder 5.

²⁶⁶Removed from box 5, folder 5.

²⁶⁷Removed from box 5, folder 5.

²⁶⁸Removed from box 5, folder 6.

²⁶⁹Removed from box 5, folder 6.

99. Photograph²⁷¹ -- artwork: *Portrait of Dr. Waterhouse's Mother* by Washington Allston
100. Photograph²⁷² -- artwork: *A Lady Reading* by Washington Allston [subject is Martha Remington Dana Allston, the artist's wife]
101. Photograph²⁷³ -- artwork: portrait, *Mrs. Sarah Kemble Siddons*
102. Photograph²⁷⁴ -- artwork: *The Valentine* by Washington Allston, 1810
103. Photograph²⁷⁵ -- artwork: portrait, *Mrs. Channing*
104. Photograph²⁷⁶ -- artwork: portrait, *The Artist's Mother, Rachel Moore Allston Flagg* by Washington Allston, 1809
105. Photograph²⁷⁷ -- artwork: portrait, *Elizabeth Davis Locke Harrington*
106. Photograph²⁷⁸ -- artwork: portrait, *Sarah Harvey Trumbull* by Samuel Waldo
107. Photograph²⁷⁹ -- artwork: *Head of a Woman* by Washington Allston
108. Photograph²⁸⁰ -- artwork: *Original Sketch on Two Sides* by Washington Allston
109. Photograph²⁸¹ -- artwork: *Original Sketch on Two Sides* by Washington Allston

Box 15 (L 11.0", H 4.5", W 9.0" photograph box)

Envelope:

1. Photograph²⁸² -- artwork: *Angel of Wrath Over Jerusalem* by Washington Allston
2. Photograph²⁸³ -- artwork: *Christ Healing the Sick*
3. Photograph²⁸⁴ -- artwork: *St. John the Evangelist* by Washington Allston
4. Photograph²⁸⁵ -- artwork: *Head of St. Peter* by Washington Allston
5. Photograph²⁸⁶ -- artwork: *Angel Appearing to St. Peter in Prison* by Washington Allston
6. Photograph²⁸⁷ -- artwork: *Man in Chains* by Washington Allston
7. Photograph²⁸⁸ -- artwork: sketches
8. Photograph²⁸⁹ -- artwork: *Tragic Figure with Chains* by Washington Allston
9. Photograph²⁹⁰ -- artwork: *Christ Healing the Sick*

²⁷⁰Removed from box 5, folder 6.

²⁷¹Removed from box 5, folder 6.

²⁷²Removed from box 5, folder 6.

²⁷³Removed from box 5, folder 6.

²⁷⁴Removed from box 5, folder 6.

²⁷⁵Removed from box 5, folder 6.

²⁷⁶Removed from box 5, folder 6.

²⁷⁷Removed from box 5, folder 6.

²⁷⁸Removed from box 5, folder 6.

²⁷⁹Removed from box 5, folder 7.

²⁸⁰Removed from box 5, folder 7.

²⁸¹Removed from box 5, folder 7.

²⁸²Removed from box 5, folder 7.

²⁸³Removed from box 5, folder 7.

²⁸⁴Removed from box 5, folder 7.

²⁸⁵Removed from box 5, folder 7.

²⁸⁶Removed from box 5, folder 7.

²⁸⁷Removed from box 5, folder 7.

²⁸⁸Removed from box 5, folder 7.

²⁸⁹Removed from box 5, folder 7.

²⁹⁰Removed from box 5, folder 7.

10. Photograph²⁹¹ -- artwork: *Mother Watching Her Child* by Washington Allston, 1814
11. Photograph²⁹² -- artwork: *Small Oval Sketch of a Female Head* by Washington Allston
12. Photograph²⁹³ -- artwork: *Portrait of a Young Girl, Seated*--False Washington Allston signature
13. Photograph²⁹⁴ -- artwork: *Portrait of a Young Girl, Seated* [false Washington Allston signature]
14. Photograph²⁹⁵ -- artwork: *The Buck's Progress Number I* by Washington Allston
15. Photograph²⁹⁶ -- artwork: *The Buck's Progress Number I* by Washington Allston
16. Photograph²⁹⁷ -- artwork: *The Buck's Progress Number II* by Washington Allston
17. Photograph²⁹⁸ -- artwork: *The Buck's Progress Number II* by Washington Allston
18. Photograph²⁹⁹ -- artwork: *The Buck's Progress Number III* by Washington Allston
19. Photograph³⁰⁰ -- artwork: *The Buck's Progress Number III* by Washington Allston
20. Photograph³⁰¹ -- artwork: *Coast Scene on the Mediterranean* by Washington Allston
21. Photograph³⁰² -- artwork: *Coast Scene on the Mediterranean* by Washington Allston
22. Photograph³⁰³ -- artwork: *Coast Scene on the Mediterranean* by Washington Allston
23. Photograph³⁰⁴ -- artwork: *Coast Scene on the Mediterranean* by Washington Allston
24. Photograph³⁰⁵ -- artwork: *Shipwreck* by Washington Allston
25. Photograph³⁰⁶ -- artwork: *Ship at Sea or Ship in a Squall* by Washington Allston
26. Photograph³⁰⁷ -- artwork: *Ship at Sea or Ship in a Squall* by Washington Allston
27. Photograph³⁰⁸ -- artwork: *Landscape (Aeneas and Achates Come Ashore)* by Washington Allston, ca. 1800
28. Photograph³⁰⁹ -- artwork: *Storm* by Claude-Joseph Vernet
29. Photograph³¹⁰ -- artwork: *Rising of a Thunderstorm at Sea* by Washington Allston
30. Photograph³¹¹ -- artwork: *The Witch of Endor* by Washington Allston
31. Photograph³¹² -- artwork: *The Witch of Endor* by Washington Allston

²⁹¹Removed from box 5, folder 8.

²⁹²Removed from box 5, folder 8.

²⁹³Removed from box 5, folder 8.

²⁹⁴Removed from box 5, folder 8.

²⁹⁵Removed from box 5, folder 9.

²⁹⁶Removed from box 5, folder 9.

²⁹⁷Removed from box 5, folder 9.

²⁹⁸Removed from box 5, folder 9.

²⁹⁹Removed from box 5, folder 9.

³⁰⁰Removed from box 5, folder 9.

³⁰¹Removed from box 5, folder 10.

³⁰²Removed from box 5, folder 10.

³⁰³Removed from box 5, folder 10.

³⁰⁴Removed from box 5, folder 10.

³⁰⁵Removed from box 5, folder 10.

³⁰⁶Removed from box 5, folder 10.

³⁰⁷Removed from box 5, folder 10.

³⁰⁸Removed from box 5, folder 10.

³⁰⁹Removed from box 5, folder 10.

³¹⁰Removed from box 5, folder 10.

³¹¹Removed from box 5, folder 11.

32. Photograph³¹³ -- artwork: *The Witch of Endor* by Washington Allston
33. Photograph³¹⁴ -- artwork: *Paul and Silas in Prison* by Washington Allston
34. Photograph³¹⁵ -- artwork: *Paul and Silas in Prison* by Washington Allston
35. Photograph³¹⁶ -- artwork: *Jacob's Dream* by Washington Allston
36. Photograph³¹⁷ -- artwork: *Jacob's Dream* by Washington Allston
37. Photograph³¹⁸ -- artwork: *Elijah Fed by the Ravens* by Washington Allston
38. Photograph³¹⁹ -- artwork: *David Playing Before Saul* by Washington Allston
39. Photograph³²⁰ -- artwork: *Moses and the Serpent* by Washington Allston
40. Photograph³²¹ -- artwork: *Last Supper* by Washington Allston, 1820
41. Photograph³²² -- artwork: *David Playing Before Saul* by Washington Allston
42. Photograph³²³ -- artwork: *Moses and the Serpent* by Washington Allston
43. Photograph³²⁴ -- artwork: *Adam and Eve* [by Washington Allston? by Thomas Cole?]
44. Photograph³²⁵ -- artwork: *The Deluge*
45. Photograph³²⁶ -- artwork: *Jacob's Dream* by Washington Allston
46. Photograph³²⁷ -- storage area showing Washington Allston's self-portrait; *Rebecca at the Well*; two marble busts; and other non-artistic items
47. Photograph³²⁸ -- artwork: *The Dead Man Restored to Life by Touching the Bones of the Prophet Elijah* by Washington Allston
48. Photograph³²⁹ -- artwork: *Falstaff and Crew* by Washington Allston
49. Photograph³³⁰ -- artwork: *Lorenzo and Jessica* by Washington Allston, 1832
50. Photograph³³¹ -- artwork: *Death of King John* by Washington Allston
51. Photograph³³² -- artwork: *Opening of the Casket* by Washington Allston
52. Photograph³³³ -- artwork: group portrait of a family [painting is leaning against boards and cards with the numbers and letters "2," "0," "6," "A," and "2" visible above the painting]

³¹²Removed from box 5, folder 11.

³¹³Removed from box 5, folder 11.

³¹⁴Removed from box 5, folder 11.

³¹⁵Removed from box 5, folder 11.

³¹⁶Removed from box 5, folder 11.

³¹⁷Removed from box 5, folder 11.

³¹⁸Removed from box 5, folder 11.

³¹⁹Removed from box 5, folder 11.

³²⁰Removed from box 5, folder 11.

³²¹Removed from box 5, folder 11.

³²²Removed from box 5, folder 11.

³²³Removed from box 5, folder 11.

³²⁴Removed from box 5, folder 11.

³²⁵Removed from box 5, folder 11.

³²⁶Removed from box 5, folder 11.

³²⁷Removed from box 5, folder 11.

³²⁸Removed from box 5, folder 11.

³²⁹Removed from box 5, folder 12.

³³⁰Removed from box 5, folder 12.

³³¹Removed from box 5, folder 12.

³³²Removed from box 5, folder 12.

53. Photograph³³⁴ -- artwork: *The Taming of the Shrew* by Washington Allston
54. Photograph³³⁵ -- artwork: *Fairies on the Sea Shore*
55. Photograph³³⁶ -- artwork--*Fairies on the Sea Shore*
56. Photograph³³⁷ -- artwork: *Titania's Fairie Court*
57. Photograph³³⁸ -- artwork: *Unfinished Head of Jeremiah*
58. Photograph³³⁹ -- artwork: *Unfinished Head of Jeremiah*
59. Photograph³⁴⁰ -- reverse of canvas with inscription: "The original Sketch/of/The Prophet Jeremiah/dictating to Baruch/By Washington Allston"
60. Photograph³⁴¹ -- reverse of canvas with inscription: "The original Sketch/of/The Prophet Jeremiah/dictating to Baruch/By Washington Allston"
61. Photograph³⁴² -- artwork: *Jeremiah Dictating His Prophecy of the Destruction of Jerusalem to Baruch the Scribe* by Washington Allston, ca. 1820 [study]
62. Photograph³⁴³ -- artwork: *Portrait of a Polish Jew* by Washington Allston, 1817
63. Photograph³⁴⁴ -- artwork: *Jeremiah Dictating His Prophecy of the Destruction of Jerusalem to Baruch the Scribe* by Washington Allston, ca. 1820
64. Photograph³⁴⁵ -- artwork: *Study for Belshazzar's Feast* by Washington Allston
65. Photograph³⁴⁶ -- artwork: portrait, *Isaac of York* by Washington Allston
66. Photograph³⁴⁷ -- artwork: *Head of a Jew*
67. Photograph³⁴⁸ -- artwork: *Head of a Jew*
68. Photograph³⁴⁹ -- artwork: *Portrait of a Polish Jew* by Washington Allston, 1817
69. Photograph³⁵⁰ -- artwork: portrait, *Samuel Taylor Coleridge* by Washington Allston
70. Photograph³⁵¹ -- artwork: portrait, *Samuel Taylor Coleridge* by Washington Allston, 1806
71. Photograph³⁵² -- artwork: portrait, *Samuel Taylor Coleridge* by Washington Allston

³³³Removed from box 5, folder 12.

³³⁴Removed from box 5, folder 12.

³³⁵Removed from box 5, folder 12.

³³⁶Removed from box 5, folder 12.

³³⁷Removed from box 5, folder 12.

³³⁸Removed from box 5, folder 13.

³³⁹Removed from box 5, folder 13.

³⁴⁰Removed from box 5, folder 13.

³⁴¹Removed from box 5, folder 13.

³⁴²Removed from box 5, folder 13.

³⁴³Removed from box 5, folder 13.

³⁴⁴Removed from box 5, folder 13.

³⁴⁵Removed from box 5, folder 14.

³⁴⁶Removed from box 5, folder 14.

³⁴⁷Removed from box 5, folder 14.

³⁴⁸Removed from box 5, folder 14.

³⁴⁹Removed from box 5, folder 14.

³⁵⁰Removed from box 5, folder 16.

³⁵¹Removed from box 5, folder 16.

³⁵²Removed from box 5, folder 16.

72. Photograph³⁵³ -- artwork: portrait, *Samuel Taylor Coleridge* by Washington Allston, 1806
73. Carte-de-Visite³⁵⁴ -- portrait, *Arthur Whiting Sherman*, W. Kurtz, Madison Square, New York, photographer
74. Carte-de-Visite³⁵⁵ -- portrait, *Arthur Whiting Sherman*, W. Kurtz, Madison Square, New York, photographer
75. Carte-de-Visite³⁵⁶ -- portrait, *Mrs. Mary Flagg Sherman*, Mora, 707 Broadway, New York, photographer
76. Carte-de-Visite³⁵⁷ -- portrait, *George Sherman*, Rockwood, 845 Broadway, New York, photographer [subject is seated in a chair and is reading a newspaper]
77. Photograph³⁵⁸ -- artwork: *Marine* by Edmund Trowbridge Dana
78. Photograph³⁵⁹ -- Henry Dexter's studio [numerous sculptures are visible]
79. Negative³⁶⁰ -- Henry Dexter's studio
80. Photograph³⁶¹ -- artwork: *Landscape Belonging to Judge Dana*
81. Photograph³⁶² -- gravestone of Washington Irving in Tarrytown, New York
82. Photograph³⁶³ -- historical roadside marker: "NEW YORK/THE HEADLESS/HORSEMAN BRIDGE/DESCRIBED BY IRVING IN THE/LEGEND OF SLEEPY HOLLOW/FORMERLY SPANNED THIS/STREAM AT THIS SPOT/STATE EDUCATION/DEPARTMENT 1935"
83. Photograph³⁶⁴ -- artwork: portrait, *Washington Irving* by John Wesley Jarvis, 1808
84. Negative³⁶⁵ -- artwork: portrait, *Washington Irving*, 1805
85. Photograph³⁶⁶ -- artwork: portrait, *Armestead Thomson Mason* by Edward Greene Malbone
86. Photograph³⁶⁷ -- artwork: portrait, *Judge Joseph Story* by Alvan Clark
87. Photograph³⁶⁸ -- artwork: portrait, *Judge Joseph Story* by Alvan Clark
88. Photograph³⁶⁹ -- artwork: portrait, *Judge Joseph Story* by Alvan Clark
89. Negative³⁷⁰ -- artwork: portrait, *Judge Joseph Story* by Alvan Clark

³⁵³Removed from box 5, folder 16.

³⁵⁴Removed from box 5, folder 17.

³⁵⁵Removed from box 5, folder 17.

³⁵⁶Removed from box 5, folder 17.

³⁵⁷Removed from box 5, folder 17.

³⁵⁸Removed from box 6, folder 4.

³⁵⁹Removed from box 6, folder 4.

³⁶⁰Removed from box 6, folder 4.

³⁶¹Removed from box 6, folder 4.

³⁶²Removed from box 6, folder 6.

³⁶³Removed from box 6, folder 6.

³⁶⁴Removed from box 6, folder 6.

³⁶⁵Removed from box 6, folder 6.

³⁶⁶Removed from box 6, folder 8.

³⁶⁷Removed from box 6, folder 10.

³⁶⁸Removed from box 6, folder 10.

³⁶⁹Removed from box 6, folder 10.

³⁷⁰Removed from box 6, folder 10.

90. Photograph³⁷¹ -- artwork: portrait, *Benjamin Waterhouse* by Gilbert Stuart
91. Photograph³⁷² -- exterior of home of Dr. Benjamin Waterhouse, Cambridge, Massachusetts
92. Photograph³⁷³ -- exterior of home of Dr. Benjamin Waterhouse, Cambridge, Massachusetts
93. Photograph³⁷⁴ -- exterior of home of Dr. Benjamin Waterhouse, Cambridge, Massachusetts
94. Photograph³⁷⁵ -- exterior of home of Dr. Benjamin Waterhouse, Cambridge, Massachusetts
95. Negative³⁷⁶ -- [artwork?]: exterior of home of Dr. Benjamin Waterhouse, Cambridge, Massachusetts
96. Photographic clip sheets (30)³⁷⁷ -- each sheet shows several of Washington Allston's works [individual items are cut off of the sheets]
97. Photograph³⁷⁸ -- Dana tombstone, Old Burying Ground, Cambridge, Massachusetts
98. Postcard, photographic³⁷⁹ -- "A SIGNAL LANTERN/OFF/PAUL REVERE"
99. Postcard³⁸⁰ -- "CHRIST CHURCH"
100. Postcard³⁸¹ -- "CHRIST CHURCH (BUILT 1723) 'THE OLD NORTH CHURCH OF PAUL REVERE FAME'"

Box 16 (2.5" legal size)

Folder:

1. Negative, glass, 21.4 x 16.3 cm -- black and white; portrait of Samuel Taylor Coleridge
2. Negative, glass, 8.1 x 10.0 cm -- black and white; Washington Allston's Grave, Cambridge, Massachusetts
3. Negative, glass, 16.3 x 21.4 cm³⁸² -- black and white; of Prometheus
4. Negative, glass, 8.1 x 10.1 cm³⁸³ -- black and white; of home of Dr. Benjamin Waterhouse, Cambridge, Massachusetts

Box 17 (L 12.75", H 3.0", W 9.75" flat box)

- Negatives -- of Washington Allston sketches and paintings.

³⁷¹Removed from box 6, folder 12.

³⁷²Removed from box 6, folder 12.

³⁷³Removed from box 6, folder 12.

³⁷⁴Removed from box 6, folder 12.

³⁷⁵Removed from box 6, folder 12.

³⁷⁶Removed from box 6, folder 12.

³⁷⁷Removed from box 6, folder 15.

³⁷⁸Removed from box 7, folder 9.

³⁷⁹Removed from box 7, folder 9.

³⁸⁰Removed from box 7, folder 9.

³⁸¹Removed from box 7, folder 9.

³⁸²Removed from box 3, folder 13.

³⁸³Removed from box 6, folder 12.

Series VIII. Lantern Slides (cataloged as LONG 20190-20255)

Lantern Slide Box (LONG 20190)

Lantern Slides:

1. Transparency, lantern-slide (LONG 20191) -- Longfellow's statement about Allston
2. Transparency, lantern-slide (LONG 20192) -- portrait of Mrs. William Allston, Esther La Brosse de Marboeuf, from *Waccamaw*, p. 9
3. Transparency, lantern-slide (LONG 20193) -- portrait of William Alston of Clifton (b. 1756), from *Waccamaw*, p. 23
4. Transparency, lantern-slide (LONG 20194) -- portrait of Thomas Allston of Prospect Hill (1764-1794), from *Waccamaw*, p. 29
5. Transparency, lantern-slide (LONG 20195) -- portrait of Gov. Robert F. Allston
6. Transparency, lantern-slide (LONG 20196) -- portrait of William Algernon Alston (b. 1782) of Rose Hill, from *Waccamaw*, p. 39
7. Transparency, lantern-slide (LONG 20197) -- photograph of drawing room at Fairfield [home of Charles Allston?]
8. Transparency, lantern-slide (LONG 20198) -- portrait of Washington Allston by a French artist, [ca. 1793?]
9. Transparency, lantern-slide (LONG 20199) -- photograph of the house of Dr. Benjamin Waterhouse
10. Transparency, lantern-slide (LONG 20200) -- *Buck's Progress I*, "Introduction of a Country Lad in a Club of Town Bucks," by Washington Allston
11. Transparency, lantern-slide (LONG 20201) -- *Buck's Progress II*, "A Beau in his Dressing Room," by Washington Allston
12. Transparency, lantern-slide (LONG 20202) -- *Buck's Progress III*, "A Midnight Fray with Watchmen," by Washington Allston
13. Transparency, lantern-slide (LONG 20203) -- caricature of President Willard of Harvard by Washington Allston
14. Transparency, lantern-slide (LONG 20204) -- Hasty Pudding Club journal, 7 March 1799, by Washington Allston
15. Transparency, lantern-slide (LONG 20205) -- caricatures from Washington Allston letter to John Knapp, 23 October 1800
16. Transparency, lantern-slide (LONG 20206) -- *Rising of a Thunder Storm at Sea* by Washington Allston, 1804
17. Transparency, lantern-slide (LONG 20207) -- landscape painted by Washington Allston when at college, 1798
18. Transparency, lantern-slide (LONG 20208) -- *The Deluge* by Washington Allston, 1804
19. Transparency, lantern-slide (LONG 20209) -- *Diana and Her Nymphs in the Chase* by Washington Allston, 1805
20. Transparency, lantern-slide (LONG 20210) -- *Italian Landscape* by Washington Allston, 1805
21. Transparency, lantern-slide (LONG 20211) -- *Italian Landscape* by Washington Allston, 1830
22. Transparency, lantern-slide (LONG 20212) -- *Jason* by Washington Allston, 1805

23. Transparency, lantern-slide (LONG 20213) -- portrait of Washington Irving by Washington Allston, 1805
24. Transparency, lantern-slide (LONG 20214) -- *A Schapen Laughing at a Burgomaster's Joke*, an engraving by Washington Allston in Irving's *Knickerbocker History of New York*
25. Transparency, lantern-slide (LONG 20215) -- *Wouter van Twillen's Decision in the Case of Schoonhoven and Blucker*, an engraving by Washington Allston in Irving's *Knickerbocker History of New York*
26. Transparency, lantern-slide (LONG 20216) -- *Casket Scene From The Merchant of Venice* by Washington Allston, 1807
27. Transparency, lantern-slide (LONG 20217) -- *Rich Bookseller and Poor Author* by Washington Allston, 1809
28. Transparency, lantern-slide (LONG 20218) -- portrait of Allston's mother, Rachel Moore, 1809
29. Transparency, lantern-slide (LONG 20219) -- portrait of Ann Channing Allston by Washington Allston, 1811
30. Transparency, lantern-slide (LONG 20220) -- portrait of Lucy Ellery Channing by Washington Allston, 1811
31. Transparency, lantern-slide (LONG 20221) -- *The Paint King of Washington Allston Illustrated* by W.H. Dougal
32. Transparency, lantern-slide (LONG 20222) -- *Mother Watching Her Sleeping Child* by Washington Allston, 1814
33. Transparency, lantern-slide (LONG 20223) -- portrait of Washington Allston by Frederick Walker, 1812
34. Transparency, lantern-slide (LONG 20224) -- portrait of Benjamin West by Washington Allston, 1814
35. Transparency, lantern-slide (LONG 20225) -- portrait of Samuel Taylor Coleridge by Washington Allston, 1814
36. Transparency, lantern-slide (LONG 20226) -- *Coleridge Table-Talking*
37. Transparency, lantern-slide (LONG 20227) -- *Donna Mencina in the Robbers' Cavern* by Washington Allston, 1815
38. Transparency, lantern-slide (LONG 20228) -- portrait of Samuel Williams by Washington Allston, 13 June 1816
39. Transparency, lantern-slide (LONG 20229) -- *Jacob's Dream* by Washington Allston, 1817
40. Transparency, lantern-slide (LONG 20230) -- angel from *Jacob's Dream* by Washington Allston, 1817
41. Transparency, lantern-slide (LONG 20231) -- head of an angel by Washington Allston
42. Transparency, lantern-slide (LONG 20232) -- two angels from *Jacob's Dream* by Washington Allston, 1817
43. Transparency, lantern-slide (LONG 20233) -- group of angels from *Jacob's Dream* by Washington Allston, 1817
44. Transparency, lantern-slide (LONG 20234) -- *The Witch of Endor* by Washington Allston, 1820

45. Transparency, lantern-slide (LONG 20235) -- *Miriam the Prophetess* by Washington Allston, 1820
46. Transparency, lantern-slide (LONG 20236) -- *Allston and Gilbert Stuart's Family* by [Washington Allston?]
47. Transparency, lantern-slide (LONG 20237) -- *Washington Allston of Brookgreen* by Washington Allston; from *Waccamaw*, p. 13
48. Transparency, lantern-slide (LONG 20238) -- map of Cambridgeport at the time of Washington Allston, 1843
49. Transparency, lantern-slide (LONG 20239) -- portrait of Washington Allston by George W. Flagg
50. Transparency, lantern-slide (LONG 20240) -- *Spalatro's Vision of the Bloody Hand* by Washington Allston, 1830; from engraving
51. Transparency, lantern-slide (LONG 20241) -- *Rosalie Listening to the Music* [Allston's Poem] by Washington Allston, 1835
52. Transparency, lantern-slide (LONG 20242) -- *Evening Hymn* by Washington Allston, 1835
53. Transparency, lantern-slide (LONG 20243) -- *The Tuscan Girl* [Allston's Poem] by Washington Allston, 1831
54. Transparency, lantern-slide (LONG 20244) -- *An Italian Shepherd Boy* by Washington Allston, 1821-1823
55. Transparency, lantern-slide (LONG 20245) -- *Lorenzo and Jessica* by Washington Allston, 1832
56. Transparency, lantern-slide (LONG 20246) -- *Death of King John* by Washington Allston, 1837
57. Transparency, lantern-slide (LONG 20247) -- *Dance of Fairies on the Sea Shore* by Washington Allston; from engraving by Cheney, 1837
58. Transparency, lantern-slide (LONG 20248) -- sketch for *Titania's Court* by Washington Allston, 1837
59. Transparency, lantern-slide (LONG 20249) -- *Danger* by Washington Allston
60. Transparency, lantern-slide (LONG 20250) -- *Heliodorus Driven From the Temple* by Washington Allston; from engraving by Cheney, 1837
61. Transparency, lantern-slide (LONG 20251) -- portrait of Washington Allston by George W. Flagg, 1839
62. Transparency, lantern-slide (LONG 20252) -- *Belshazzar's Feast: study in colors* by Washington Allston
63. Transparency, lantern-slide (LONG 20253) -- sketch for left hand of *Belshazzar* by Washington Allston
64. Transparency, lantern-slide (LONG 20254) -- photograph of Washington Allston's tomb, Old Cambridge Burying-Ground, with Christ Church in background
65. Transparency, lantern-slide (LONG 20255) -- photograph of Washington Allston's studio

Series IX. Oversize Materials (part of LONG 20258)**A. Oversize Materials removed from the Main Collection³⁸⁴****1. Oversize Materials removed from Series I. Biography**

Box 18 (L 20.75", H 3.0", W 16.75" flat box)

Folder:

1. Clipping(s) from the *Advertiser* and *Patriot*, 1843-1844; removed from box 1, folder 8: "Clippings on Allston, 1839-1947"
2. Clipping(s) from the *New York Mirror*, 15 June 1839; removed from box 1, folder 8: "Clippings on Allston, 1839-1947"

2. Oversize Materials removed from Series II. Works

3. Oversize item(s) re: Grand Concert, Baltimore Museum of Art; removed from box 3, folder 6, titled "Broadside, n.d. [ca. 1860s]"
4. Oversize item(s) re: Allston's studio; removed from box 3, folder 10, titled "Allston exhibition, 1947-1948, Part 1 of 2"
5. Oversize broadside re: Royal West of England Academy, 1946; removed from box 4, folder 5, titled "Allston works in England, 1944-1948"
6. Oversize picture of *St. Peter*; removed from box 4, folder 11, titled "Miscellaneous pictures of Allston's paintings, n.d."
7. Oversize Washington Allston self-portrait, 1805; removed from box 5, folder 16, titled "Coleridge, 1934-1950, Part 1 of 2"

B. Oversize Materials found Together³⁸⁵**1. Oversize Materials related to Series I. Biography**

8. Street map (photostat)--London, 1799
9. Street map (photostat)--London, 1799
10. Genealogical charts (photostats) of John Allston of St. John, Berkeley³⁸⁶
11. Map (photostat) -- South Carolina shoreline, vic. Georgetown, 1888
12. Map (photostat) -- South Carolina shoreline, vic. Georgetown
13. Map (photostat) -- South Carolina shoreline, Long Bay and All Saints Parish
14. Print -- portrait of Washington Allston [Mezzotint by Sartain after painting by Chester Harding]

2. Oversize Materials related to Series II. Works

³⁸⁴The oversize materials in folders 1-7 were removed from the letter and legal size folders listed above.

³⁸⁵The oversize materials in folders 8-17 were found together in an oversize box and were arranged according to the established outline (*see* the Scope and Content Note).

³⁸⁶Includes photographs.

15. Proof Sheet -- outlines by Allston

3. Oversize Materials related to Series III. Friends

16. Print -- *Samuel Taylor Coleridge Table-Talking*, n.d.
17. Photostats -- of portions of books inscribed to Washington Allston

Series X. Books, Magazines, and Catalogs (cataloged as LONG 14544 and 14549-14554)**A. Washington Allston's Library**

Box 19 (Record Center carton): contains catalog numbers LONG 14442-14463

1. Book (LONG 14442) -- Frederick Schiller, *Don Carlos, Prince Royal of Spain: An Historical Drama, from the German of Frederick Schiller, Author of . . .*
2. Book (LONG 14443) -- Robert W. Gibbes, *Memoir of James de Veaux, of Charleston, S.C.: Member of the National Academy of Design, New-York*
3. Book (LONG 14444) -- S. Austin Allibone, *Critical Dictionary of English Literature, and British and American Authors, Living and Deceased, from the Earliest Accounts . . . , Volume I*
4. Book (LONG 14445) -- Benjamin Waterhouse, *Essay on Junius and his Letters Embracing a Sketch of the Life and Character of William Pitt, Earl of Chatham . . .*
5. Magazine (LONG 14446) -- *Southern Quarterly Review*
6. Book (LONG 14447) -- Chester Harding, *My Egotistigraphy*
7. Magazine (LONG 14448) -- *Knickerbocker*, Volume XIV, Number 2, August 1839
8. Book (LONG 14449) -- William Shakespeare, *Gallery of Shakespeare, or Illustrations of his Dramatic Works, Engraved in Aqua-fortis from Retzsch Hamlet*
9. Book (LONG 14450) -- William Carey, *Critical Description and Analytical Review of "Death on the Pale Horse," Painted by Benjamin West, P.R.A. with Desultory . . .*
10. Book (LONG 14451) -- H.H. Milman, *Belshazzar: A Dramatic Poem*
11. Book (LONG 14452) -- Allan Cunningham, *Lives of the Most Eminent British Painters and Sculptors, Volume II*
12. Book (LONG 14453) -- Allan Cunningham, *Lives of the Most Eminent British Painters and Sculptors, Volume IV*
13. Book (LONG 14454) -- Allan Cunningham, *Lives of the Most Eminent British Painters and Sculptors, Volume V*
14. Book (LONG 14455) -- Hannah More, *Works of Hannah More, in Eight Volumes Including Several Pieces Never Before Published, Volume IV*
15. Book (LONG 14456) -- Kugler, *Handbook of Painting. The Italian Schools. Translated from the German of Kugler by a Lady, Part 1*
16. Book (LONG 14457) -- Kugler, *Handbook of Painting. The Italian Schools. Translated from the German of Kugler by a Lady, Part 2*
17. Book (LONG 14458) -- Henry Fuseli, *Lectures on Painting, Delivered at the Royal Academy, by Henry Fuseli, P.P. with Additional Observations and Notes*
18. Book (LONG 14459) -- Washington Allston, *Monaldi: A Tale*
19. Book (LONG 14460) -- Washington Allston, *Sylphs of the Seasons, with Other Poems*
20. Book (LONG 14461) -- Washington Allston, *Lectures on Art, and Poems*
21. Book (LONG 14462) -- Washington Allston, *Lectures on Art, and Poems*
22. Book (LONG 14463) -- Washington Allston, *Lectures on Art, and Poems*
23. Plate, printing (LONG 14464) -- copper plate of *Rebecca at the Well*

Box 20 (Record Center carton): contains catalog numbers LONG 14420 and 14465-14492

1. Book (LONG 14420) -- *Antiquarian or the Guide for Foreigners to go the Rounds of the Antiquities of Rome*
2. Book (LONG 14465) -- Helen Kohn Hennig, *Great South Carolinians from Colonial Days to the Confederate War*
3. Book (LONG 14466) -- *Ancient Reliques or, Delineations of Monastic, Castellated, & Domestic Architecture and Other Interesting Subjects with Historical and Descriptions Sketches, Volume I*
4. Book (LONG 14467) -- *Antiquarian and Topographical Cabinet, Containing a Series of Elegant Views of the Most Interesting Objects of Curiosity in Great Britain, Volume II*
5. Book (LONG 14468) -- *Antiquarian and Topographical Cabinet, Containing a Series of Elegant Views of the Most Interesting Objects of Curiosity in Great Britain, Volume IV*
6. Book (LONG 14469) -- *Antiquarian and Topographical Cabinet, Containing a Series of Elegant Views of the Most Interesting Objects of Curiosity in Great Britain, Volume X*
7. Book (LONG 14470) -- *Dupatt's Travels*
8. Book (LONG 14471) -- William Wordsworth, *Poetical Works of William Wordsworth*
9. Book (LONG 14472) -- Thomas Campbell, *Poetical Works of Thomas Campbell, Including Several Pieces from the Original Manuscript, Never Before Published in this Country*
10. Book (LONG 14473) -- Torquato Tasso, *Gerusalemme Liberata di Torquato Tasso*
11. Book (LONG 14474) -- Benjamin Grosvenor, *Mourner: or, the Afflicted Relieved*
12. Book (LONG 14475) -- George Gordon Byron, *Bride of Abydos. A Turkish Tale*
13. Book (LONG 14476) -- Washington Allston, *Lectures on Art, and Poems*
14. Book (LONG 14477) -- Gulian Verplanck, *Discoveries and Addresses on Subjects of American History, Arts, and Literature*
15. Book (LONG 14478) -- Francois S. De Fenelon, *Fenelon's Treatise on the Education of Daughters: Translated from the French, and Adapted to English Readers, with an Original Chapter, "On Religious . . ."*
16. Book (LONG 14479) -- Washington Allston, *Sylphs of the Seasons, with Other Poems*
17. Book (LONG 14480) -- Washington Allston, *Sylphs of the Seasons, with Other Poems*
18. Book (LONG 14481) -- Grosse, *Dagger*
19. Book (LONG 14482) -- Jean Paul Frederic Richter, *Life of Jean Paul Frederic Richter. Compiled from Various Sources. Together with his Autobiography, Volume I*
20. Book (LONG 14483) -- Jean Paul Frederic Richter, *Life of Jean Paul Frederic Richter. Compiled from Various Sources. Together with his Autobiography, Volume II*
21. Book (LONG 14484) -- Charles Lamb, *Works of Charles Lamb, Volume I*
22. Book (LONG 14485) -- Charles Lamb, *Works of Charles Lamb, Volume II*
23. Book (LONG 14486) -- Charles Lamb, *Works of Charles Lamb, Volume III*
24. Book (LONG 14487) -- Charles Lamb, *Works of Charles Lamb, Volume IV*
25. Book (LONG 14488) -- Robert Burns, *Works of Robert Burns with an Account of his Life, and a Criticism on his . . .*
26. Book (LONG 14489) -- J. Aikin, *Letters to a Young Lady, on a Course of English Poetry*
27. Book (LONG 14490) -- John Hawkesworth, *Adventurer, Volume I*

28. Book (LONG 14491) -- John Hawkesworth, *Adventurer, Volume II*
29. Book (LONG 14492) -- John Hawkesworth, *Adventurer, Volume III*

B. H.W.L. Dana's Library re: Washington Allston

Box 21 (Record Center carton): contains catalog numbers LONG 14355-14362

1. Book (LONG 14355) -- *Influence and History of the Boston Athenaeum from 1807 to 1907 with a Record of its Officers and Benefactors and a Complete List of Proprietors*
2. Book (LONG 14356) -- Lawrence Shaw Mayo, *Winthrop Family in America*
3. Book (LONG 14357) -- Elizabeth W.A. Pringle, *Chronicles of Chicora Wood*
4. Book (LONG 14358) -- Jared B. Flagg, *Life and Letters of Washington Allston*
5. Book (LONG 14359) -- Jared B. Flagg, *Life and Letters of Washington Allston*
6. Book (LONG 14360) -- Jared B. Flagg, *Life and Letters of Washington Allston*
7. Book (LONG 14361) -- Thomas Bettinelli, *Dictionnaire Francois-Italien Compose sur Les Dictionnaires de L'Academie de France et de la Crusa; Enrichi de Tous les Termes Propres des Sciences, et . . . , Volume I*
8. Book (LONG 14362) -- Tommaso Bettinelli, *Dictionario Italiano-Francese Composto su I Dictionari delle Accademie della Crusa e di Francia, ed Arricchito di Tutti I Termini Propri delle Science e delle . . . , Volume II*

Box 22 (Record Center carton): contains catalog numbers LONG 14363-14368, 14493-14496, 14498-14502, and 14504-14511

1. Book (LONG 14363) -- Washington Allston, *Monaldi: A Tale*
2. Book (LONG 14364) -- Washington Allston, *Monaldi: A Tale*
3. Book (LONG 14365) -- *American Almanac and Repository of Useful Knowledge, for the Year 1844*
4. Book (LONG 14366) -- Christopher Wordsworth, *Memoirs of William Wordsworth, Poet-Laureate, D.C.I., Volume I*
5. Book (LONG 14367) -- Christopher Wordsworth, *Memoirs of William Wordsworth, Poet-Laureate, D.C.I, Volume II*
6. Book (LONG 14368) -- Edmond Waller, *Poems, & C. Written upon Several Occasions, and to Several Persons*
7. Book (LONG 14493) -- C. Churchill, *Poems*
8. Magazine (LONG 14494) -- *Democratic Review, Volume XIII, Number LXIV, October 1843*
9. Magazine (LONG 14495) -- *American Whig Review, Series XXXI, Number 67, July 1850*
10. Magazine (LONG 14496) -- *Old and New, Volume IV, Number 6, December 1871*
11. Magazine (LONG 14498) -- *Southern Literary Messenger, Volume VIII, Number 8, August 1842* [with enclosures]
12. Book (LONG 14499) -- Gulian C. Verplanck, *Essays on the Nature and Uses of the Various Evidences of Revealed Religion*
13. Book (LONG 14500) -- Washington Allston, *Monaldi: A Tale*

14. Book (LONG 14501) -- *Literary Miscellany, Including Dissertations and Essays on Subjects of Literature, Science, and Morals, Biographical and Historical Sketches, Critical . . . , Volume I*
15. Book (LONG 14502) -- *Literary Miscellany, Including Dissertations and Essays on Subjects of Literature, Science, and Morals, Biographical and Historical Sketches, Critical . . . , Volume II*
16. Book (LONG 14504) -- William Ware, *Lectures on the Works and Genius of Washington Allston*
17. Book (LONG 14505) -- G. Crabbe, *Borough: A Poem in Twenty-Four Letters*
18. Book (LONG 14506) -- *Novum Testamentum, Cum Versione Latina*
19. Book (LONG 14507) -- Clara Erskine Clement, *Painters, Sculptors, Architects, Engravers, and their Works. A Handbook*
20. Book (LONG 14508) -- Henry T. Tuckerman, *Artist-Life: Or Sketches of American Painters*
21. Book (LONG 14509) -- *Painter-Poets*
22. Book (LONG 14510) -- *Historical Sketches of the Old Painters*
23. Book (LONG 14511) -- Sarah Tytler, *Modern Painters and their Paintings, for the Use of Schools and Learners in Art*

Box 23 (Record Center carton): contains catalog numbers LONG 14512-14521, 14524-14536, 14544, and 14549-14554

1. Book (LONG 14512) -- William Dunlap, *History of the Rise and Progress of the Arts of Design in the United States, Volume I*
2. Book (LONG 14513) -- William Dunlap, *History of the Rise and Progress of the Arts of Design in the United States, Volume II*
3. Book (LONG 14514) -- William Dunlap, *History of the Rise and Progress of the Arts of Design in the United States, Volume III*
4. Book (LONG 14515) -- E.K. Chambers, *Samuel Taylor Coleridge: A Biographical Study*
5. Magazine (LONG 14516) -- *Scribner's Magazine, Volume XI, January-June 1892*
6. Book (LONG 14517) -- E.T.H. Shaffer, *Carolina Gardens: The History, Romance and Tradition of Many Gardens of Two States Through More than Two Centuries*
7. Book (LONG 14518) -- Elizabeth P. Peabody, *Last Evening with Allston, and Other Papers*
8. Book (LONG 14519) -- John A. Albro, *Blessedness of those who Die in the Lord. A Sermon Occasioned by the Death of Washington Allston, Delivered in the Church of the Shepard Society, Cambridge . . .*
9. Book (LONG 14520) -- John A. Albro, *Blessedness of those who Die in the Lord. A Sermon Occasioned by the Death of Washington Allston, Delivered in the Church of the Shepard Society, Cambridge . . .*
10. Magazine (LONG 14521) -- Lyman Beecher, *Government of God Desirable: A Sermon Delivered at Newark, N.J. October, 1808, During the Session of the Synod of New-York and New-Jersey*

11. Magazine (LONG 14524) -- *South Carolina Historical and Genealogical Magazine, Volume L, Number 1, January 1949*
12. Magazine (LONG 14525) -- *South Carolina Historical and Genealogical Magazine, Volume L, Number 2, April 1949*
13. Magazine (LONG 14526) -- *South Carolina Historical and Genealogical Magazine, Volume L, Number 3, July 1949*
14. Magazine (LONG 14527) -- *South Carolina Historical and Genealogical Magazine, Volume L, Number 4, October 1949*
15. Magazine (LONG 14528) -- *South Carolina Historical and Genealogical Magazine, Volume LI, Number 1, January 1950*
16. Magazine (LONG 14529) -- *South Carolina Historical and Genealogical Magazine, Volume LI, Number 2, April 1950*
17. Magazine (LONG 14530) -- *South Carolina Historical and Genealogical Magazine, Volume LI, Number 3, July 1950*
18. Magazine (LONG 14531) -- *South Carolina Historical and Genealogical Magazine, Volume LI, Number 4, October 1950*
19. Magazine (LONG 14532) -- *Atlantic Monthly, Devoted to Literature, Science, Art, and Politics, Volume LXXI, Number 427, May 1893*
20. Magazine (LONG 14533) -- *Atlantic Monthly, Devoted to Literature, Science, Art, and Politics, Volume LXIV, Number 385, November 1889*
21. Magazine (LONG 14534) -- *Atlantic Monthly, Devoted to Literature, Science, Art, and Politics, Volume LXIV, Number 385, November 1889*
22. Magazine (LONG 14535) -- *Scribners Magazine, Volume XI, Number 1, January 1892*
23. Magazine (LONG 14536) -- *Scribners Magazine, Volume XI, Number 1, January 1892*
24. Book (LONG 14544) -- *Reminiscences of William Hasell Wilson (1811-1902)*
25. Catalog (LONG 14549) -- Fogg Museum of Art (1948), *Real and Ideal in American Art*
26. Catalog (LONG 14550) -- Fogg Museum of Art (1948), *Real and Ideal in American Art*
27. Catalog (LONG 14551) -- Fogg Museum of Art (1948), *Real and Ideal in American Art*
28. Catalog (LONG 14552) -- Fogg Museum of Art (1948), *Real and Ideal in American Art*
29. Catalog (LONG 14553) -- Fogg Museum of Art (1948), *Real and Ideal in American Art*
30. Catalog (LONG 14554) -- Fogg Museum of Art (1948), *Real and Ideal in American Art*



Figure 6:

*Washington Allston, Dido and Anna, ca. 1813-1815.
The Lowe Art Museum, University of Miami, Florida.
Photograph from Longfellow National Historic Site,
Washington Allston Materials (LONG 20258), box 13.*

BIBLIOGRAPHY

- Gerdts, William H. & Theodore E. Stebbins, Jr. *"A Man of Genius:" The Art of Washington Allston (1779-1843)*. Boston: the Museum of Fine Arts, 1979.
- Godwin, D.E.W, Anita B. Israel, and Jennifer Quinn. *Finding Aid for Henry Wadsworth Longfellow Dana (1881-1950) Papers, 1744-1971 (bulk dates 1850-1950)*. Boston: National Park Service, August 1999.
- Iles, George. *Leading American Inventors*. Biographies of Leading Americans, W.P. Trent, ed. New York: Henry Holt and Company, 1912.
- U.S. Department of the Interior, National Park Service. *Automated National Catalog System User Manual*. Washington, D.C.: National Park Service, April 1987.
- U.S. Department of the Interior, National Park Service. *Museum Handbook, Part II: Museum Records*. Washington, D.C.: National Park Service, September 1984.
- Wright, Nathalia, ed. *The Correspondence of Washington Allston*. Lexington, KY.: The University Press of Kentucky, 1993.

APPENDIX:

LIST OF CATALOG NUMBERS

LONG 14355 Book³⁸⁷ -- *Influence and History of the Boston Athenaeum from 1807 to 1907 with a Record of its Officers and Benefactors and a Complete List of Proprietors.*

LONG 14356 Book³⁸⁸ -- Lawrence Shaw Mayo, *Winthrop Family in America.*

LONG 14357 Book³⁸⁹ -- Elizabeth W.A. Pringle, *Chronicles of Chicora Wood.*

LONG 14358 Book³⁹⁰ -- Jared B. Flagg, *Life and Letters of Washington Allston.*

LONG 14359 Book³⁹¹ -- Jared B. Flagg, *Life and Letters of Washington Allston.*

LONG 14360 Book³⁹² -- Jared B. Flagg, *Life and Letters of Washington Allston.*

LONG 14361 Book³⁹³ -- Thomas Bettinelli, *Dictionnaire Francois-Italien Compose sur Les Dictionnaires de L'Academie de France et de la Crusa; Enrichi de Tous les Termes Propres des Sciences, et . . . , Volume I.*

LONG 14362 Book³⁹⁴ -- Tommaso Bettinelli, *Dizionario Italiano-Francese Composto su I Dizionari delle Accademie della Crusa e di Francia, ed Arricchito di Tutti I Termini Propri delle Scienze e delle . . . , Volume II.*

LONG 14363 Book³⁹⁵ -- Washington Allston, *Monaldi: A Tale.*

LONG 14364 Book³⁹⁶ -- Washington Allston, *Monaldi: A Tale.*

³⁸⁷Listed in Series X. Books, Magazines, and Catalogs, sub-series B. H.W.L. Dana's Library, box 21.

³⁸⁸Listed in Series X. Books, Magazines, and Catalogs, sub-series B. H.W.L. Dana's Library, box 21.

³⁸⁹Listed in Series X. Books, Magazines, and Catalogs, sub-series B. H.W.L. Dana's Library, box 21.

³⁹⁰Listed in Series X. Books, Magazines, and Catalogs, sub-series B. H.W.L. Dana's Library, box 21.

³⁹¹Listed in Series X. Books, Magazines, and Catalogs, sub-series B. H.W.L. Dana's Library, box 21.

³⁹²Listed in Series X. Books, Magazines, and Catalogs, sub-series B. H.W.L. Dana's Library, box 21.

³⁹³Listed in Series X. Books, Magazines, and Catalogs, sub-series B. H.W.L. Dana's Library, box 21.

³⁹⁴Listed in Series X. Books, Magazines, and Catalogs, sub-series B. H.W.L. Dana's Library, box 21.

³⁹⁵Listed in Series X. Books, Magazines, and Catalogs, sub-series B. H.W.L. Dana's Library, box 21.

³⁹⁶Listed in Series X. Books, Magazines, and Catalogs, sub-series B. H.W.L. Dana's Library, box 21.

LONG 14365 Book³⁹⁷ -- *American Almanac and Repository of Useful Knowledge, for the Year 1844.*

LONG 14366 Book³⁹⁸ -- Christopher Wordsworth, *Memoirs of William Wordsworth, Poet-Laureate, D.C.I., Volume I.*

LONG 14367 Book³⁹⁹ -- Christopher Wordsworth, *Memoirs of William Wordsworth, Poet-Laureate, D.C.I., Volume II.*

LONG 14368 Book⁴⁰⁰ -- Edmond Waller, *Poems &C. Written upon Several Occasions, and to Several Persons.*

LONG 14410 Book⁴⁰¹ -- Frank Preston Sterns, *Cambridge Sketches.*

LONG 14420 Book⁴⁰² -- *Antiquarian or the Guide for Foreigners to go the Rounds of the Antiquities of Rome.*

LONG 14442 Book⁴⁰³ -- Frederick Schiller, *Don Carlos, Prince Royal of Spain: An Historical Drama, from the German of Frederick Schiller, Author of*

LONG 14443 Book⁴⁰⁴ -- Robert W. Gibbes, *Memoir of James de Veaux, of Charleston, S.C.: Member of the National Academy of Design, New-York.*

LONG 14444 Book⁴⁰⁵ -- S. Austin Allibone, *Critical Dictionary of English Literature, and British and American Authors, Living and Deceased, from the Earliest Accounts . . . , Volume I.*

LONG 14445 Book⁴⁰⁶ -- Benjamin Waterhouse, *Essay on Junius and his Letters Embracing a Sketch of the Life and Character of William Pitt, Earl of Chatham*

LONG 14446 Magazine⁴⁰⁷ -- *Southern Quarterly Review.*

LONG 14447 Book⁴⁰⁸ -- Chester Harding, *My Egotistigraphy.*

³⁹⁷Listed in Series X. Books, Magazines, and Catalogs, sub-series B. H.W.L. Dana's Library, box 21.

³⁹⁸Listed in Series X. Books, Magazines, and Catalogs, sub-series B. H.W.L. Dana's Library, box 21.

³⁹⁹Listed in Series X. Books, Magazines, and Catalogs, sub-series B. H.W.L. Dana's Library, box 21.

⁴⁰⁰Listed in Series X. Books, Magazines, and Catalogs, sub-series B. H.W.L. Dana's Library, box 21.

⁴⁰¹As of the date of this finding aid's release, this item has not been located.

⁴⁰²Listed in Series X. Books, Magazines, and Catalogs, sub-series A. Allston's Library, box 20.

⁴⁰³Listed in Series X. Books, Magazines, and Catalogs, sub-series A. Allston's Library, box 20.

⁴⁰⁴Listed in Series X. Books, Magazines, and Catalogs, sub-series A. Allston's Library, box 20.

⁴⁰⁵Listed in Series X. Books, Magazines, and Catalogs, sub-series A. Allston's Library, box 20.

⁴⁰⁶Listed in Series X. Books, Magazines, and Catalogs, sub-series A. Allston's Library, box 20.

⁴⁰⁷Listed in Series X. Books, Magazines, and Catalogs, sub-series A. Allston's Library, box 20.

- LONG 14448 Magazine⁴⁰⁹ -- *Knickerbocker*, Volume XIV, Number 2, August 1839.
- LONG 14449 Book⁴¹⁰ -- William Shakespeare, *Gallery of Shakespeare, or Illustrations of his Dramatic Works, Engraved in Aqua-fortis from Retzsch Hamlet*.
- LONG 14450 Book⁴¹¹ -- William Carey, *Critical Description and Analytical Review of "Death on the Pale Horse," Painted by Benjamin West, P.R.A. with Desultory . . .*
- LONG 14451 Book⁴¹² -- H.H. Milman, *Belshazzar: A Dramatic Poem*.
- LONG 14452 Book⁴¹³ -- Allan Cunningham, *Lives of the Most Eminent British Painters and Sculptors, Volume II*.
- LONG 14453 Book⁴¹⁴ -- Allan Cunningham, *Lives of the Most Eminent British Painters and Sculptors, Volume IV*.
- LONG 14454 Book⁴¹⁵ -- Allan Cunningham, *Lives of the Most Eminent British Painters and Sculptors, Volume V*.
- LONG 14455 Book⁴¹⁶ -- Hannah More, *Works of Hannah More, in Eight Volumes Including Several Pieces Never Before Published, Volume IV*.
- LONG 14456 Book⁴¹⁷ -- Kugler, *Handbook of Painting. The Italian Schools. Translated from the German of Kugler by a Lady, Part 1*.
- LONG 14457 Book⁴¹⁸ -- Kugler, *Handbook of Painting. The Italian Schools. Translated from the German of Kugler by a Lady, Part 2*.
- LONG 14458 Book⁴¹⁹ -- Henry Fuseli, *Lectures on Painting, Delivered at the Royal Academy, by Henry Fuseli, P.P. with Additional Observations and Notes*.

⁴⁰⁸Listed in Series X. Books, Magazines, and Catalogs, sub-series A. Allston's Library, box 20.

⁴⁰⁹Listed in Series X. Books, Magazines, and Catalogs, sub-series A. Allston's Library, box 20.

⁴¹⁰Listed in Series X. Books, Magazines, and Catalogs, sub-series A. Allston's Library, box 20.

⁴¹¹Listed in Series X. Books, Magazines, and Catalogs, sub-series A. Allston's Library, box 20.

⁴¹²Listed in Series X. Books, Magazines, and Catalogs, sub-series A. Allston's Library, box 20.

⁴¹³Listed in Series X. Books, Magazines, and Catalogs, sub-series A. Allston's Library, box 20.

⁴¹⁴Listed in Series X. Books, Magazines, and Catalogs, sub-series A. Allston's Library, box 20.

⁴¹⁵Listed in Series X. Books, Magazines, and Catalogs, sub-series A. Allston's Library, box 20.

⁴¹⁶Listed in Series X. Books, Magazines, and Catalogs, sub-series A. Allston's Library, box 20.

⁴¹⁷Listed in Series X. Books, Magazines, and Catalogs, sub-series A. Allston's Library, box 20.

⁴¹⁸Listed in Series X. Books, Magazines, and Catalogs, sub-series A. Allston's Library, box 20.

⁴¹⁹Listed in Series X. Books, Magazines, and Catalogs, sub-series A. Allston's Library, box 20.

- LONG 14459 Book⁴²⁰ -- Washington Allston, *Monaldi: A Tale*.
- LONG 14460 Book⁴²¹ -- Washington Allston, *Sylphs of the Seasons, with Other Poems*.
- LONG 14461 Book⁴²² -- Washington Allston, *Lectures on Art, and Poems*.
- LONG 14462 Book⁴²³ -- Washington Allston, *Lectures on Art, and Poems*.
- LONG 14463 Book⁴²⁴ -- Washington Allston, *Lectures on Art, and Poems*.
- LONG 14464 Plate, printing⁴²⁵ -- copper plate of *Rebecca at the Well*.
- LONG 14465 Book⁴²⁶ -- Helen Kohn Hennig, *Great South Carolinians from Colonial Days to the Confederate War*.
- LONG 14466 Book⁴²⁷ -- *Ancient Reliques or, Delineations of Monastic, Castellated, & Domestic Architecture and Other Interesting Subjects with Historical and Descriptions Sketches, Volume I*.
- LONG 14467 Book⁴²⁸ -- *Antiquarian and Topographical Cabinet, Containing a Series of Elegant Views of the Most Interesting Objects of Curiosity in Great Britain, Volume II*.
- LONG 14468 Book⁴²⁹ -- *Antiquarian and Topographical Cabinet, Containing a Series of Elegant Views of the Most Interesting Objects of Curiosity in Great Britain, Volume IV*.
- LONG 14469 Book⁴³⁰ -- *Antiquarian and Topographical Cabinet, Containing a Series of Elegant Views of the Most Interesting Objects of Curiosity in Great Britain, Volume X*.

⁴²⁰Listed in Series X. Books, Magazines, and Catalogs, sub-series A. Allston's Library, box 20.

⁴²¹Listed in Series X. Books, Magazines, and Catalogs, sub-series A. Allston's Library, box 20.

⁴²²Listed in Series X. Books, Magazines, and Catalogs, sub-series A. Allston's Library, box 20.

⁴²³Listed in Series X. Books, Magazines, and Catalogs, sub-series A. Allston's Library, box 20.

⁴²⁴Listed in Series X. Books, Magazines, and Catalogs, sub-series A. Allston's Library, box 20.

⁴²⁵Listed in Series X. Books, Magazines, and Catalogs, sub-series A. Allston's Library, box 20.

⁴²⁶Listed in Series X. Books, Magazines, and Catalogs, sub-series A. Allston's Library, box 20.

⁴²⁷Listed in Series X. Books, Magazines, and Catalogs, sub-series A. Allston's Library, box 20.

⁴²⁸Listed in Series X. Books, Magazines, and Catalogs, sub-series A. Allston's Library, box 20.

⁴²⁹Listed in Series X. Books, Magazines, and Catalogs, sub-series A. Allston's Library, box 20.

⁴³⁰Listed in Series X. Books, Magazines, and Catalogs, sub-series A. Allston's Library, box 20.

- LONG 14470 Book⁴³¹ -- *Dupatt's Travels.*
- LONG 14471 Book⁴³² -- William Wordsworth, *Poetical Works of William Wordsworth.*
- LONG 14472 Book⁴³³ -- Thomas Campbell, *Poetical Works of Thomas Campbell, Including Several Pieces from the Original Manuscript, Never Before Published in this Country.*
- LONG 14473 Book⁴³⁴ -- Torquato Tasso, *Gerusalemme Liberata di Torquato Tasso.*
- LONG 14474 Book⁴³⁵ -- Benjamin Grosvenor, *Mourner: or, the Afflicted Relieved.*
- LONG 14475 Book⁴³⁶ -- George Gordon Byron, *Bride of Abydos. A Turkish Tale.*
- LONG 14476 Book⁴³⁷ -- Washington Allston, *Lectures on Art, and Poems.*
- LONG 14477 Book⁴³⁸ -- Gulian Verplanck, *Discoveries and Addresses on Subjects of American History, Arts, and Literature.*
- LONG 14478 Book⁴³⁹ -- Francois S. De Fenelon, *Fenelon's Treatise on the Education of Daughters: Translated from the French, and Adapted to English Readers, with an Original Chapter, "On Religious"*
- LONG 14479 Book⁴⁴⁰ -- Washington Allston, *Sylphs of the Seasons, with Other Poems.*
- LONG 14480 Book⁴⁴¹ -- Washington Allston, *Sylphs of the Seasons, with Other Poems.*
- LONG 14481 Book⁴⁴² -- Grosse, *Dagger.*
- LONG 14482 Book⁴⁴³ -- Jean Paul Frederic Richter, *Life of Jean Paul Frederic Richter. Compiled from Various Sources. Together with his Autobiography, Volume I.*

⁴³¹Listed in Series X. Books, Magazines, and Catalogs, sub-series A. Allston's Library, box 20.

⁴³²Listed in Series X. Books, Magazines, and Catalogs, sub-series A. Allston's Library, box 20.

⁴³³Listed in Series X. Books, Magazines, and Catalogs, sub-series A. Allston's Library, box 20.

⁴³⁴Listed in Series X. Books, Magazines, and Catalogs, sub-series A. Allston's Library, box 20.

⁴³⁵Listed in Series X. Books, Magazines, and Catalogs, sub-series A. Allston's Library, box 20.

⁴³⁶Listed in Series X. Books, Magazines, and Catalogs, sub-series A. Allston's Library, box 20.

⁴³⁷Listed in Series X. Books, Magazines, and Catalogs, sub-series A. Allston's Library, box 20.

⁴³⁸Listed in Series X. Books, Magazines, and Catalogs, sub-series A. Allston's Library, box 20.

⁴³⁹Listed in Series X. Books, Magazines, and Catalogs, sub-series A. Allston's Library, box 20.

⁴⁴⁰Listed in Series X. Books, Magazines, and Catalogs, sub-series A. Allston's Library, box 20.

⁴⁴¹Listed in Series X. Books, Magazines, and Catalogs, sub-series A. Allston's Library, box 20.

⁴⁴²Listed in Series X. Books, Magazines, and Catalogs, sub-series A. Allston's Library, box 20.

⁴⁴³Listed in Series X. Books, Magazines, and Catalogs, sub-series A. Allston's Library, box 20.

- LONG 14483 Book⁴⁴⁴ -- Jean Paul Frederic Richter, *Life of Jean Paul Frederic Richter. Compiled from Various Sources. Together with his Autobiography, Volume II.*
- LONG 14484 Book⁴⁴⁵ -- Charles Lamb, *Works of Charles Lamb, Volume I.*
- LONG 14485 Book⁴⁴⁶ -- Charles Lamb, *Works of Charles Lamb, Volume II.*
- LONG 14486 Book⁴⁴⁷ -- Charles Lamb, *Works of Charles Lamb, Volume III.*
- LONG 14487 Book⁴⁴⁸ -- Charles Lamb, *Works of Charles Lamb, Volume IV.*
- LONG 14488 Book⁴⁴⁹ -- Robert Burns, *Works of Robert Burns with an Account of his Life, and a Criticism on his*
- LONG 14489 Book⁴⁵⁰ -- J. Aikin, *Letters to a Young Lady, on a Course of English Poetry.*
- LONG 14490 Book⁴⁵¹ -- John Hawkesworth, *Adventurer, Volume I.*
- LONG 14491 Book⁴⁵² -- John Hawkesworth, *Adventurer, Volume II.*
- LONG 14492 Book⁴⁵³ -- John Hawkesworth, *Adventurer, Volume III.*
- LONG 14493 Book⁴⁵⁴ -- C. Churchill, *Poems.*
- LONG 14494 Magazine⁴⁵⁵ -- *Democratic Review, Volume XIII, Number LXIV, October 1843.*
- LONG 14495 Magazine⁴⁵⁶ -- *American Whig Review, Series XXXI, Number 67, July 1850.*
- LONG 14496 Magazine⁴⁵⁷ -- *Old and New, Volume IV, Number 6, December 1871.*

⁴⁴⁴Listed in Series X. Books, Magazines, and Catalogs, sub-series A. Allston's Library, box 20.

⁴⁴⁵Listed in Series X. Books, Magazines, and Catalogs, sub-series A. Allston's Library, box 20.

⁴⁴⁶Listed in Series X. Books, Magazines, and Catalogs, sub-series A. Allston's Library, box 20.

⁴⁴⁷Listed in Series X. Books, Magazines, and Catalogs, sub-series A. Allston's Library, box 20.

⁴⁴⁸Listed in Series X. Books, Magazines, and Catalogs, sub-series A. Allston's Library, box 20.

⁴⁴⁹Listed in Series X. Books, Magazines, and Catalogs, sub-series A. Allston's Library, box 20.

⁴⁵⁰Listed in Series X. Books, Magazines, and Catalogs, sub-series A. Allston's Library, box 20.

⁴⁵¹Listed in Series X. Books, Magazines, and Catalogs, sub-series A. Allston's Library, box 20.

⁴⁵²Listed in Series X. Books, Magazines, and Catalogs, sub-series A. Allston's Library, box 20.

⁴⁵³Listed in Series X. Books, Magazines, and Catalogs, sub-series A. Allston's Library, box 20.

⁴⁵⁴Listed in Series X. Books, Magazines, and Catalogs, sub-series B. H.W.L. Dana's Library, box 22.

⁴⁵⁵Listed in Series X. Books, Magazines, and Catalogs, sub-series B. H.W.L. Dana's Library, box 22.

⁴⁵⁶Listed in Series X. Books, Magazines, and Catalogs, sub-series B. H.W.L. Dana's Library, box 22.

⁴⁵⁷Listed in Series X. Books, Magazines, and Catalogs, sub-series B. H.W.L. Dana's Library, box 22.

- LONG 14497 Catalog⁴⁵⁸ -- *Washington Allston 1779-1843: A Loan Exhibition of Paintings, Drawings and Memorabilia.*
- LONG 14498 Magazine⁴⁵⁹ -- *Southern Literary Messenger, Volume VIII, Number 8, August 1842 [with enclosures].*
- LONG 14499 Book⁴⁶⁰ -- *Gulian C. Verplanck, Essays on the Nature and Uses of the Various Evidences of Revealed Religion.*
- LONG 14500 Book⁴⁶¹ -- *Washington Allston, Monaldi: A Tale.*
- LONG 14501 Book⁴⁶² -- *Literary Miscellany, Including Dissertations and Essays on Subjects of Literature, Science, and Morals, Biographical and Historical Sketches, Critical . . . , Volume I.*
- LONG 14502 Book⁴⁶³ -- *Literary Miscellany, Including Dissertations and Essays on Subjects of Literature, Science, and Morals, Biographical and Historical Sketches, Critical . . . , Volume II.*
- LONG 14503 Book⁴⁶⁴ -- *Susan Lawndes Allston, Brookgreen Waccamau in the Carolina Low Country.*
- LONG 14504 Book⁴⁶⁵ -- *William Ware, Lectures on the Works and Genius of Washington Allston.*
- LONG 14505 Book⁴⁶⁶ -- *G. Crabbe, Borough: A Poem in Twenty-Four Letters.*
- LONG 14506 Book⁴⁶⁷ -- *Novum Testamentum, Cum Versione Latina.*
- LONG 14507 Book⁴⁶⁸ -- *Clara Erskine Clement, Painters, Sculptors, Architects, Engravers, and their Works. A Handbook.*

⁴⁵⁸Listed in Series I. Biography, box 3, folder 11.

⁴⁵⁹Listed in Series X. Books, Magazines, and Catalogs, sub-series B. H.W.L. Dana's Library, box 22.

⁴⁶⁰Listed in Series X. Books, Magazines, and Catalogs, sub-series B. H.W.L. Dana's Library, box 22.

⁴⁶¹Listed in Series X. Books, Magazines, and Catalogs, sub-series B. H.W.L. Dana's Library, box 22.

⁴⁶²Listed in Series X. Books, Magazines, and Catalogs, sub-series B. H.W.L. Dana's Library, box 22.

⁴⁶³Listed in Series X. Books, Magazines, and Catalogs, sub-series B. H.W.L. Dana's Library, box 22.

⁴⁶⁴Listed in Series I. Biography, box 1, folder 8.

⁴⁶⁵Listed in Series X. Books, Magazines, and Catalogs, sub-series B. H.W.L. Dana's Library, box 22.

⁴⁶⁶Listed in Series X. Books, Magazines, and Catalogs, sub-series B. H.W.L. Dana's Library, box 22.

⁴⁶⁷Listed in Series X. Books, Magazines, and Catalogs, sub-series B. H.W.L. Dana's Library, box 22.

⁴⁶⁸Listed in Series X. Books, Magazines, and Catalogs, sub-series B. H.W.L. Dana's Library, box 22.

LONG 14508 Book⁴⁶⁹ -- Henry T. Tuckerman, *Artist-Life: Or Sketches of American Painters*.

LONG 14509 Book⁴⁷⁰ -- *Painter-Poets*.

LONG 14510 Book⁴⁷¹ -- *Historical Sketches of the Old Painters*.

LONG 14511 Book⁴⁷² -- Sarah Tytler, *Modern Painters and their Paintings, for the Use of Schools and Learners in Art*.

LONG 14512 Book⁴⁷³ -- William Dunlap, *History of the Rise and Progress of the Arts of Design in the United States, Volume I*.

LONG 14513 Book⁴⁷⁴ -- William Dunlap, *History of the Rise and Progress of the Arts of Design in the United States, Volume II*.

LONG 14514 Book⁴⁷⁵ -- William Dunlap, *History of the Rise and Progress of the Arts of Design in the United States, Volume III*.

LONG 14515 Book⁴⁷⁶ -- E.K. Chambers, *Samuel Taylor Coleridge: A Biographical Study*.

LONG 14516 Magazine⁴⁷⁷ -- *Scribner's Magazine, Volume XI, January-June 1892*.

LONG 14517 Book⁴⁷⁸ -- E.T.H. Shaffer, *Carolina Gardens: The History, Romance and Tradition of Many Gardens of Two States Through More than Two Centuries*.

LONG 14518 Book⁴⁷⁹ -- Elizabeth P. Peabody, *Last Evening with Allston, and Other Papers*.

LONG 14519 Book⁴⁸⁰ -- John A. Albro, *Blessedness of those who Die in the Lord. A Sermon Occasioned by the Death of Washington Allston, Delivered in the Church of the Shepard Society, Cambridge . . .*

⁴⁶⁹Listed in Series X. Books, Magazines, and Catalogs, sub-series B. H.W.L. Dana's Library, box 22.

⁴⁷⁰Listed in Series X. Books, Magazines, and Catalogs, sub-series B. H.W.L. Dana's Library, box 22.

⁴⁷¹Listed in Series X. Books, Magazines, and Catalogs, sub-series B. H.W.L. Dana's Library, box 22.

⁴⁷²Listed in Series X. Books, Magazines, and Catalogs, sub-series B. H.W.L. Dana's Library, box 22.

⁴⁷³Listed in Series X. Books, Magazines, and Catalogs, sub-series B. H.W.L. Dana's Library, box 22.

⁴⁷⁴Listed in Series X. Books, Magazines, and Catalogs, sub-series B. H.W.L. Dana's Library, box 22.

⁴⁷⁵Listed in Series X. Books, Magazines, and Catalogs, sub-series B. H.W.L. Dana's Library, box 22.

⁴⁷⁶Listed in Series X. Books, Magazines, and Catalogs, sub-series B. H.W.L. Dana's Library, box 22.

⁴⁷⁷Listed in Series X. Books, Magazines, and Catalogs, sub-series B. H.W.L. Dana's Library, box 22.

⁴⁷⁸Listed in Series X. Books, Magazines, and Catalogs, sub-series B. H.W.L. Dana's Library, box 22.

⁴⁷⁹Listed in Series X. Books, Magazines, and Catalogs, sub-series B. H.W.L. Dana's Library, box 22.

- LONG 14520 Book⁴⁸¹ -- John A. Albro, *Blessedness of those who Die in the Lord. A Sermon Occasioned by the Death of Washington Allston, Delivered in the Church of the Shepard Society, Cambridge*
- LONG 14521 Book⁴⁸² -- Lyman Beecher, *Government of God Desirable: A Sermon Delivered at Newark, N.J. October, 1808, During the Session of the Synod of New-York and New-Jersey.*
- LONG 14522 Catalog⁴⁸³ -- *Catalogue of the Fortieth Exhibition of Painting and Statuary at the Athenaeum Gallery, Beacon St., Boston.*
- LONG 14523 Catalog⁴⁸⁴ -- *Catalogue of the Forty-Third Exhibition of Painting and Statuary at the Athenaeum Gallery, Beacon St., Boston, 1867.*
- LONG 14524 Magazine⁴⁸⁵ -- *South Carolina Historical and Genealogical Magazine, Volume L, Number 1, January 1949.*
- LONG 14525 Magazine⁴⁸⁶ -- *South Carolina Historical and Genealogical Magazine, Volume L, Number 2, April 1949.*
- LONG 14526 Magazine⁴⁸⁷ -- *South Carolina Historical and Genealogical Magazine, Volume L, Number 3, July 1949.*
- LONG 14527 Magazine⁴⁸⁸ -- *South Carolina Historical and Genealogical Magazine, Volume L, Number 4, October 1949.*
- LONG 14528 Magazine⁴⁸⁹ -- *South Carolina Historical and Genealogical Magazine, Volume LI, Number 1, January 1950.*
- LONG 14529 Magazine⁴⁹⁰ -- *South Carolina Historical and Genealogical Magazine, Volume LI, Number 2, April 1950.*

⁴⁸⁰Listed in Series X. Books, Magazines, and Catalogs, sub-series B. H.W.L. Dana's Library, box 22.

⁴⁸¹Listed in Series X. Books, Magazines, and Catalogs, sub-series B. H.W.L. Dana's Library, box 22.

⁴⁸²Listed in Series X. Books, Magazines, and Catalogs, sub-series B. H.W.L. Dana's Library, box 22.

⁴⁸³Listed in Series II. Works, box 4, folder 8.

⁴⁸⁴Listed in Series II. Works, box 4, folder 8.

⁴⁸⁵Listed in Series X. Books, Magazines, and Catalogs, sub-series B. H.W.L. Dana's Library, box 22.

⁴⁸⁶Listed in Series X. Books, Magazines, and Catalogs, sub-series B. H.W.L. Dana's Library, box 22.

⁴⁸⁷Listed in Series X. Books, Magazines, and Catalogs, sub-series B. H.W.L. Dana's Library, box 22.

⁴⁸⁸Listed in Series X. Books, Magazines, and Catalogs, sub-series B. H.W.L. Dana's Library, box 22.

⁴⁸⁹Listed in Series X. Books, Magazines, and Catalogs, sub-series B. H.W.L. Dana's Library, box 22.

⁴⁹⁰Listed in Series X. Books, Magazines, and Catalogs, sub-series B. H.W.L. Dana's Library, box 22.

- LONG 14530 Magazine⁴⁹¹ -- *South Carolina Historical and Genealogical Magazine, Volume LI, Number 3, July 1950.*
- LONG 14531 Magazine⁴⁹² -- *South Carolina Historical and Genealogical Magazine, Volume LI, Number 4, October 1950.*
- LONG 14532 Magazine⁴⁹³ -- *Atlantic Monthly, Devoted to Literature, Science, Art, and Politics, Volume LXXI, Number 427, May 1893.*
- LONG 14533 Magazine⁴⁹⁴ -- *Atlantic Monthly, Devoted to Literature, Science, Art, and Politics, Volume LXIV, Number 385, November 1889.*
- LONG 14534 Magazine⁴⁹⁵ -- *Atlantic Monthly, Devoted to Literature, Science, Art, and Politics, Volume LXIV, Number 385, November 1889.*
- LONG 14535 Magazine⁴⁹⁶ -- *Scribners Magazine, Volume XI, Number 1, January 1892.*
- LONG 14536 Magazine⁴⁹⁷ -- *Scribners Magazine, Volume XI, Number 1, January 1892.*
- LONG 14537 Book, Address⁴⁹⁸ -- memo book with an alphabetical listing of owners of Washington Allston's work.
- LONG 14538 Journal⁴⁹⁹ -- *College Art Journal, Volume IV, Number 4.*
- LONG 14539 Bulletin⁵⁰⁰ -- *Bulletin of the Fogg Museum of Art, Volume 10, Number 1-6, December 1947.*
- LONG 14540 Bulletin⁵⁰¹ -- *Concert Bulletin of the Boston Symphony Orchestra, Number 23-24.*
- LONG 14541 Bulletin⁵⁰² -- *Concert Bulletin of the Boston Symphony Orchestra, Number 23-24.*

⁴⁹¹Listed in Series X. Books, Magazines, and Catalogs, sub-series B. H.W.L. Dana's Library, box 22.

⁴⁹²Listed in Series X. Books, Magazines, and Catalogs, sub-series B. H.W.L. Dana's Library, box 22.

⁴⁹³Listed in Series X. Books, Magazines, and Catalogs, sub-series B. H.W.L. Dana's Library, box 22.

⁴⁹⁴Listed in Series X. Books, Magazines, and Catalogs, sub-series B. H.W.L. Dana's Library, box 22.

⁴⁹⁵Listed in Series X. Books, Magazines, and Catalogs, sub-series B. H.W.L. Dana's Library, box 22.

⁴⁹⁶Listed in Series X. Books, Magazines, and Catalogs, sub-series B. H.W.L. Dana's Library, box 22.

⁴⁹⁷Listed in Series X. Books, Magazines, and Catalogs, sub-series B. H.W.L. Dana's Library, box 22.

⁴⁹⁸Listed in Series IV. Trust, box 6, folder 13.

⁴⁹⁹Listed in Series II. Works, box 4, folder 7.

⁵⁰⁰Listed in Series IV. Trust, box 6, folder 17.

⁵⁰¹Listed in Series I. Biography, box 2, folder 8.

⁵⁰²Listed in Series I. Biography, box 2, folder 8.

- LONG 14542 Bulletin⁵⁰³ -- *Concert Bulletin of the Boston Symphony Orchestra*, Number 23-24.
- LONG 14543 Bulletin⁵⁰⁴ -- *Concert Bulletin of the Boston Symphony Orchestra*, Number 23-24.
- LONG 14544 Book⁵⁰⁵ -- *Reminiscences of William Hasell Wilson (1811-1902)*.
- LONG 14545 Book⁵⁰⁶ -- E.P. Richardson, *World of the Romantic Artist: A Survey of American Culture from 1800-1825*.
- LONG 14546 Book⁵⁰⁷ -- Henry Wadsworth Longfellow Dana, Metropolitan Museum of Art Bulletin
- LONG 14547 Catalog⁵⁰⁸ -- Frederick A. Sweet, *Hudson River School and the Early American Landscape Tradition*.
- LONG 14548 Catalog⁵⁰⁹ -- Frederick A. Sweet, *Hudson River School and the Early American Landscape Tradition*.
- LONG 14549 Catalog⁵¹⁰ -- Fogg Museum of Art (1948), *Real and Ideal in American Art*.
- LONG 14550 Catalog⁵¹¹ -- Fogg Museum of Art (1948), *Real and Ideal in American Art*.
- LONG 14551 Catalog⁵¹² -- Fogg Museum of Art (1948), *Real and Ideal in American Art*.
- LONG 14552 Catalog⁵¹³ -- Fogg Museum of Art (1948), *Real and Ideal in American Art*.
- LONG 14553 Catalog⁵¹⁴ -- Fogg Museum of Art (1948), *Real and Ideal in American Art*.
- LONG 14554 Catalog⁵¹⁵ -- Fogg Museum of Art (1948), *Real and Ideal in American Art*.
- LONG 20190 Lantern slide box⁵¹⁶

⁵⁰³Listed in Series I. Biography, box 2, folder 8.

⁵⁰⁴Listed in Series I. Biography, box 2, folder 8.

⁵⁰⁵Listed in Series X. Books, Magazines, and Catalogs, sub-series B. H.W.L. Dana's Library, box 22.

⁵⁰⁶Listed in Series IV. Trust, box 7, folder 2.

⁵⁰⁷Listed in Series IV. Trust, box 6, folder 17.

⁵⁰⁸Listed in Series IV. Trust, box 7, folder 1.

⁵⁰⁹Listed in Series IV. Trust, box 7, folder 1.

⁵¹⁰Listed in Series X. Books, Magazines, and Catalogs, sub-series B. H.W.L. Dana's Library, box 22.

⁵¹¹Listed in Series X. Books, Magazines, and Catalogs, sub-series B. H.W.L. Dana's Library, box 22.

⁵¹²Listed in Series X. Books, Magazines, and Catalogs, sub-series B. H.W.L. Dana's Library, box 22.

⁵¹³Listed in Series X. Books, Magazines, and Catalogs, sub-series B. H.W.L. Dana's Library, box 22.

⁵¹⁴Listed in Series X. Books, Magazines, and Catalogs, sub-series B. H.W.L. Dana's Library, box 22.

⁵¹⁵Listed in Series X. Books, Magazines, and Catalogs, sub-series B. H.W.L. Dana's Library, box 22.

⁵¹⁶Listed in Series VIII. Lantern Slides.

- LONG 20191* Transparency, lantern-slide⁵¹⁷ -- Longfellow's Statement About Allston.
- LONG 20192* Transparency, lantern-slide⁵¹⁸ -- portrait of Mrs. William Allston, Esther La Brosse de Marboeuf, from *Waccamaw*, p. 9.
- LONG 20193* Transparency, lantern-slide⁵¹⁹ -- portrait of William Alston of Clifton (b. 1756), from *Waccamaw*, p. 23.
- LONG 20194* Transparency, lantern-slide⁵²⁰ -- portrait of Thomas Allston of Prospect Hill (1764-1794), from *Waccamaw*, p. 29.
- LONG 20195* Transparency, lantern-slide⁵²¹ -- portrait of Gov. Robert F. Allston.
- LONG 20196* Transparency, lantern-slide⁵²² -- Portrait of William Algernon Alston (b. 1782) of Rose Hill, from *Waccamaw*, p. 39.
- LONG 20197* Transparency, lantern-slide⁵²³ -- photograph of drawing room at Fairfield [home of Charles Allston?].
- LONG 20198* Transparency, lantern-slide⁵²⁴ -- portrait of Washington Allston by a French artist, [ca. 1793?].
- LONG 20199* Transparency, lantern-slide⁵²⁵ -- photograph of the house of Dr. Benjamin Waterhouse.
- LONG 20200* Transparency, lantern-slide⁵²⁶ -- *Buck's Progress I*, "Introduction of a Country Lad in a Club of Town Bucks," by Washington Allston.
- LONG 20201* Transparency, lantern-slide⁵²⁷ -- *Buck's Progress II*, "A Beau in his Dressing Room," by Washington Allston.

⁵¹⁷Listed in Series VIII. Lantern Slides.

⁵¹⁸Listed in Series VIII. Lantern Slides.

⁵¹⁹Listed in Series VIII. Lantern Slides.

⁵²⁰Listed in Series VIII. Lantern Slides.

⁵²¹Listed in Series VIII. Lantern Slides.

⁵²²Listed in Series VIII. Lantern Slides.

⁵²³Listed in Series VIII. Lantern Slides.

⁵²⁴Listed in Series VIII. Lantern Slides.

⁵²⁵Listed in Series VIII. Lantern Slides.

⁵²⁶Listed in Series VIII. Lantern Slides.

⁵²⁷Listed in Series VIII. Lantern Slides.

- LONG 20202* Transparency, lantern-slide⁵²⁸ -- *Buck's Progress III*, "A Midnight Fray with Watchmen," by Washington Allston.
- LONG 20203* Transparency, lantern-slide⁵²⁹ -- caricature of Pres. Willard of Harvard by Washington Allston.
- LONG 20204* Transparency, lantern-slide⁵³⁰ -- Hasty Pudding Club journal, March 7, 1799, by Washington Allston.
- LONG 20205* Transparency, lantern-slide⁵³¹ -- caricatures from Washington Allston letter to John Knapp, 23 October 1800.
- LONG 20206* Transparency, lantern-slide⁵³² -- *Rising of a Thunder Storm at Sea* by Washington Allston, 1804.
- LONG 20207* Transparency, lantern-slide⁵³³ -- landscape painted by Washington Allston when at college, 1798.
- LONG 20208* Transparency, lantern-slide⁵³⁴ -- *The Deluge* by Washington Allston, 1804.
- LONG 20209* Transparency, lantern-slide⁵³⁵ -- *Diana and Her Nymphs in the Chase* by Washington Allston, 1805.
- LONG 20210* Transparency, lantern-slide⁵³⁶ -- *Italian Landscape* by Washington Allston, 1805.
- LONG 20211* Transparency, lantern-slide⁵³⁷ -- *Italian Landscape* by Washington Allston, 1830.
- LONG 20212* Transparency, lantern-slide⁵³⁸ -- *Jason* by Washington Allston, 1805.
- LONG 20213* Transparency, lantern-slide⁵³⁹ -- portrait of Washington Irving by Washington Allston, 1805.

⁵²⁸Listed in Series VIII. Lantern Slides.

⁵²⁹Listed in Series VIII. Lantern Slides.

⁵³⁰Listed in Series VIII. Lantern Slides.

⁵³¹Listed in Series VIII. Lantern Slides.

⁵³²Listed in Series VIII. Lantern Slides.

⁵³³Listed in Series VIII. Lantern Slides.

⁵³⁴Listed in Series VIII. Lantern Slides.

⁵³⁵Listed in Series VIII. Lantern Slides.

⁵³⁶Listed in Series VIII. Lantern Slides.

⁵³⁷Listed in Series VIII. Lantern Slides.

⁵³⁸Listed in Series VIII. Lantern Slides.

⁵³⁹Listed in Series VIII. Lantern Slides.

- LONG 20214* Transparency, lantern-slide⁵⁴⁰ -- *A Schapen Laughing at a Burgomaster's Joke*, an engraving by Washington Allston in Irving's *Knickerbocker History of New York*.
- LONG 20215* Transparency, lantern-slide⁵⁴¹ -- *Wouter van Twillen's Decision in the Case of Schoonhoven and Blucker*, an engraving by Washington Allston in Irving's *Knickerbocker History of New York*.
- LONG 20216* Transparency, lantern-slide⁵⁴² -- *Casket Scene From The Merchant of Venice* by Washington Allston, 1807.
- LONG 20217* Transparency, lantern-slide⁵⁴³ -- *Rich Bookseller and Poor Author* by Washington Allston, 1809.
- LONG 20218* Transparency, lantern-slide⁵⁴⁴ -- portrait of Allston's mother, Rachel Moore, 1809.
- LONG 20219* Transparency, lantern-slide⁵⁴⁵ -- portrait of Ann Channing Allston by Washington Allston, 1811.
- LONG 20220* Transparency, lantern-slide⁵⁴⁶ -- portrait of Lucy Ellery Channing by Washington Allston, 1811.
- LONG 20221* Transparency, lantern-slide⁵⁴⁷ -- *The Paint King of Washington Allston Illustrated* by W.H. Dougal.
- LONG 20222* Transparency, lantern-slide⁵⁴⁸ -- *Mother Watching Her Sleeping Child* by Washington Allston, 1814.
- LONG 20223* Transparency, lantern-slide⁵⁴⁹ -- portrait of Washington Allston by Frederick Walker, 1812.
- LONG 20224* Transparency, lantern-slide⁵⁵⁰ -- portrait of Benjamin West by Washington Allston, 1814.

⁵⁴⁰Listed in Series VIII. Lantern Slides.

⁵⁴¹Listed in Series VIII. Lantern Slides.

⁵⁴²Listed in Series VIII. Lantern Slides.

⁵⁴³Listed in Series VIII. Lantern Slides.

⁵⁴⁴Listed in Series VIII. Lantern Slides.

⁵⁴⁵Listed in Series VIII. Lantern Slides.

⁵⁴⁶Listed in Series VIII. Lantern Slides.

⁵⁴⁷Listed in Series VIII. Lantern Slides.

⁵⁴⁸Listed in Series VIII. Lantern Slides.

⁵⁴⁹Listed in Series VIII. Lantern Slides.

- LONG 20225* Transparency, lantern-slide⁵⁵¹ -- portrait of Samuel Taylor Coleridge by Washington Allston, 1814.
- LONG 20226* Transparency, lantern-slide⁵⁵² -- *Coleridge Table-Talking*.
- LONG 20227* Transparency, lantern-slide⁵⁵³ -- *Donna Mencia in the Robbers' Cavern* by Washington Allston, 1815.
- LONG 20228* Transparency, lantern-slide⁵⁵⁴ -- portrait of Samuel Williams by Washington Allston, 13 June 1816.
- LONG 20229* Transparency, lantern-slide⁵⁵⁵ -- *Jacob's Dream* by Washington Allston, 1817.
- LONG 20230* Transparency, lantern-slide⁵⁵⁶ -- angel from *Jacob's Dream* by Washington Allston, 1817.
- LONG 20231* Transparency, lantern-slide⁵⁵⁷ -- head of an angel by Washington Allston.
- LONG 20232* Transparency, lantern-slide⁵⁵⁸ -- two angels from *Jacob's Dream* by Washington Allston, 1817.
- LONG 20233* Transparency, lantern-slide⁵⁵⁹ -- group of angels from *Jacob's Dream* by Washington Allston, 1817.
- LONG 20234* Transparency, lantern-slide⁵⁶⁰ -- *The Witch of Endor* by Washington Allston, 1820.
- LONG 20235* Transparency, lantern-slide⁵⁶¹ -- *Miriam the Prophetess* by Washington Allston, 1820.

⁵⁵⁰Listed in Series VIII. Lantern Slides.

⁵⁵¹Listed in Series VIII. Lantern Slides.

⁵⁵²Listed in Series VIII. Lantern Slides.

⁵⁵³Listed in Series VIII. Lantern Slides.

⁵⁵⁴Listed in Series VIII. Lantern Slides.

⁵⁵⁵Listed in Series VIII. Lantern Slides.

⁵⁵⁶Listed in Series VIII. Lantern Slides.

⁵⁵⁷Listed in Series VIII. Lantern Slides.

⁵⁵⁸Listed in Series VIII. Lantern Slides.

⁵⁵⁹Listed in Series VIII. Lantern Slides.

⁵⁶⁰Listed in Series VIII. Lantern Slides.

⁵⁶¹Listed in Series VIII. Lantern Slides.

- LONG 20236* Transparency, lantern-slide⁵⁶² -- *Allston and Gilbert Stuart's Family* by [Washington Allston?].
- LONG 20237* Transparency, lantern-slide⁵⁶³ -- *Washington Allston of Brookgreen* by Washington Allston, from *Waccamaw*, p. 13.
- LONG 20238* Transparency, lantern-slide⁵⁶⁴ -- map of Cambridgeport at the time of Washington Allston, 1843.
- LONG 20239* Transparency, lantern-slide⁵⁶⁵ -- portrait of Washington Allston by George W. Flagg.
- LONG 20240* Transparency, lantern-slide⁵⁶⁶ -- *Spalatro's Vision of the Bloody Hand* by Washington Allston, 1830; from engraving.
- LONG 20241* Transparency, lantern-slide⁵⁶⁷ -- *Rosalie Listening to the Music* [Allston's poem] by Washington Allston, 1835.
- LONG 20242* Transparency, lantern-slide⁵⁶⁸ -- *Evening Hymn* by Washington Allston, 1835.
- LONG 20243* Transparency, lantern-slide⁵⁶⁹ -- *The Tuscan Girl* [Allston's Poem] by Washington Allston, 1831.
- LONG 20244* Transparency, lantern-slide⁵⁷⁰ -- *An Italian Shepherd Boy* by Washington Allston, 1821-1823.
- LONG 20245* Transparency, lantern-slide⁵⁷¹ -- *Lorenzo and Jessica* by Washington Allston, 1832.
- LONG 20246* Transparency, lantern-slide⁵⁷² -- *Death of King John* by Washington Allston, 1837.

⁵⁶²Listed in Series VIII. Lantern Slides.

⁵⁶³Listed in Series VIII. Lantern Slides.

⁵⁶⁴Listed in Series VIII. Lantern Slides.

⁵⁶⁵Listed in Series VIII. Lantern Slides.

⁵⁶⁶Listed in Series VIII. Lantern Slides.

⁵⁶⁷Listed in Series VIII. Lantern Slides.

⁵⁶⁸Listed in Series VIII. Lantern Slides.

⁵⁶⁹Listed in Series VIII. Lantern Slides.

⁵⁷⁰Listed in Series VIII. Lantern Slides.

⁵⁷¹Listed in Series VIII. Lantern Slides.

⁵⁷²Listed in Series VIII. Lantern Slides.

- LONG 20247* Transparency, lantern-slide⁵⁷³ -- *Dance of Fairies on the Sea Shore* by Washington Allston; from engraving by Cheney, 1837.
- LONG 20248* Transparency, lantern-slide⁵⁷⁴ -- sketch for *Titania's Court* by Washington Allston, 1837.
- LONG 20249* Transparency, lantern-slide⁵⁷⁵ -- *Danger* by Washington Allston.
- LONG 20250* Transparency, lantern-slide⁵⁷⁶ -- *Heliodorus Driven From the Temple* by Washington Allston; from engraving by Cheney, 1837.
- LONG 20251* Transparency, lantern-slide⁵⁷⁷ -- portrait of Washington Allston by George W. Flagg, 1839.
- LONG 20252* Transparency, lantern-slide⁵⁷⁸ -- *Belshazzar's Feast*: study in colors by Washington Allston.
- LONG 20253* Transparency, lantern-slide⁵⁷⁹ -- sketch for left hand of *Belshazzar* by Washington Allston.
- LONG 20254* Transparency, lantern-slide⁵⁸⁰ -- photograph of Washington Allston's tomb, Old Cambridge Burying-Ground, with Christ Church in background.
- LONG 20255* Transparency, lantern-slide⁵⁸¹ -- photograph of Washington Allston's studio.
- LONG 20258* Washington Allston (1779-1843) Materials, 1798-1966 (bulk dates 1939-1949) -- as compiled by H.W.L. Dana (1881-1950).
- LONG 25612* Clipping -- [Letter to the Editors], "Poems by Washington Allston," *The Evening Signal*, New York, 7 January 1840.

⁵⁷³Listed in Series VIII. Lantern Slides.

⁵⁷⁴Listed in Series VIII. Lantern Slides.

⁵⁷⁵Listed in Series VIII. Lantern Slides.

⁵⁷⁶Listed in Series VIII. Lantern Slides.

⁵⁷⁷Listed in Series VIII. Lantern Slides.

⁵⁷⁸Listed in Series VIII. Lantern Slides.

⁵⁷⁹Listed in Series VIII. Lantern Slides.

⁵⁸⁰Listed in Series VIII. Lantern Slides.

⁵⁸¹Listed in Series VIII. Lantern Slides.