



MEPAG

September 18, 2008



Michael Meyer
Lead Scientist



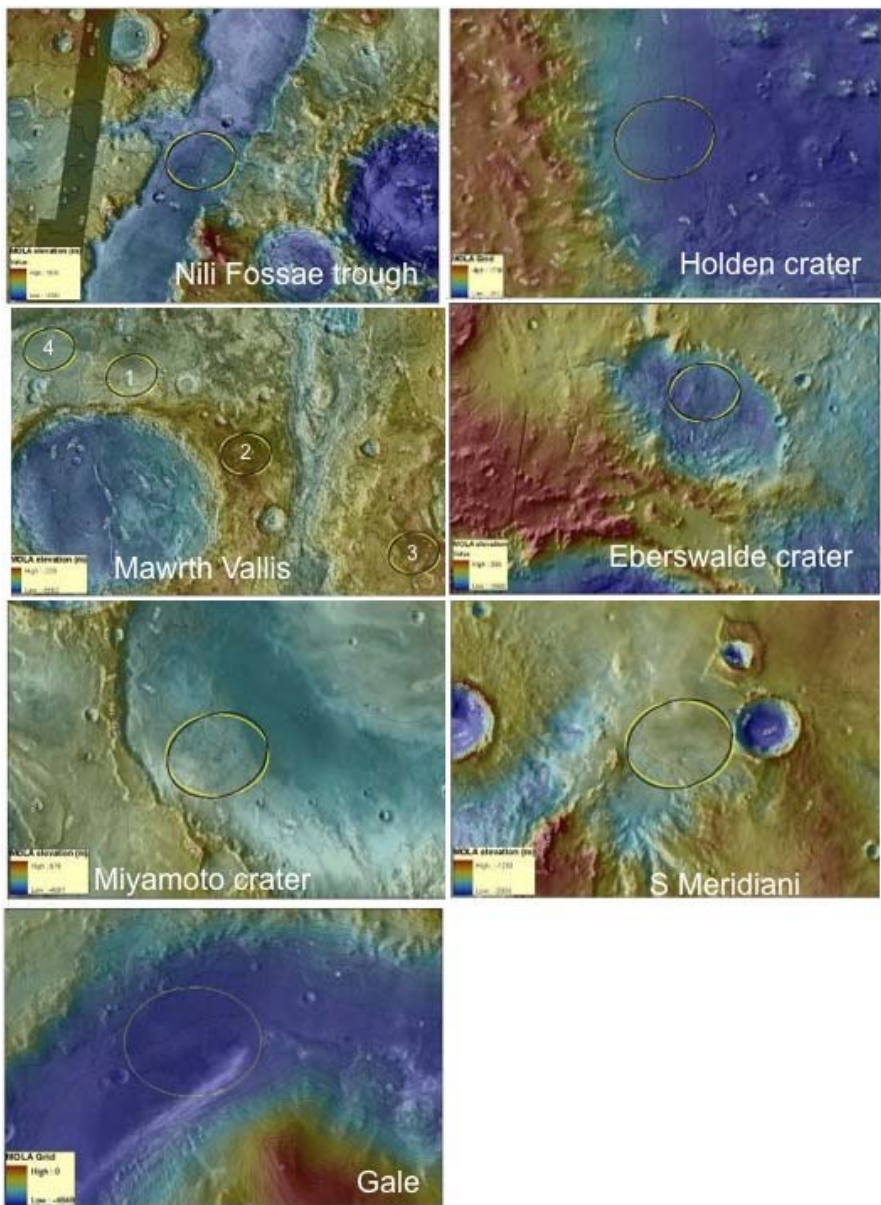
Mars Exploration Program Science Status



- Phoenix landed May 25, 2008!
- Scout 2013 mission selected
 - Congratulations MAVEN!
- MSL 3rd Landing Site Workshop, yesterday
- MSL Participating Scientists NRA
 - To be released in October, selections in January 2009

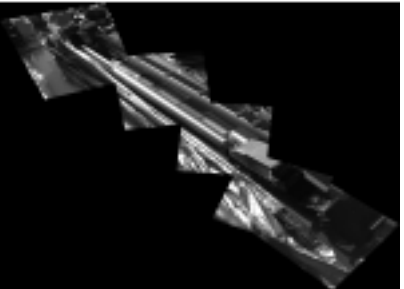


Landing Sites

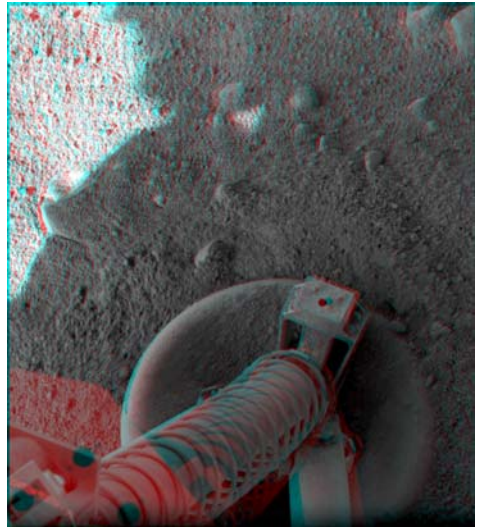




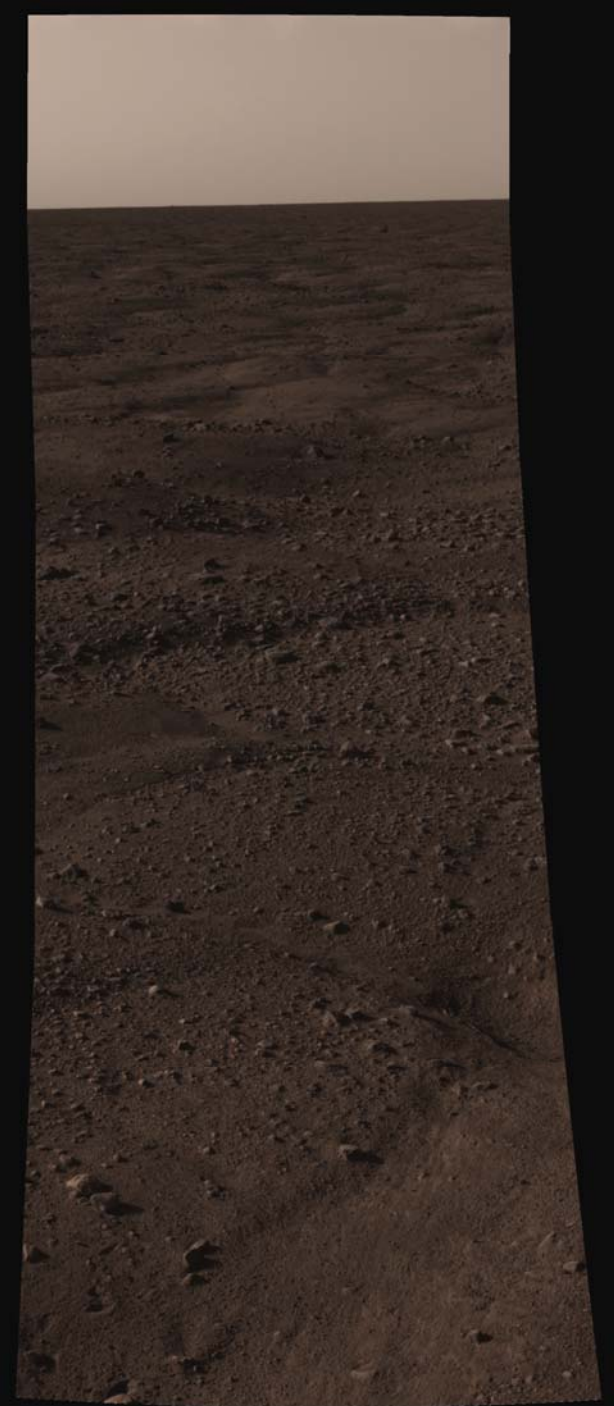
First Images



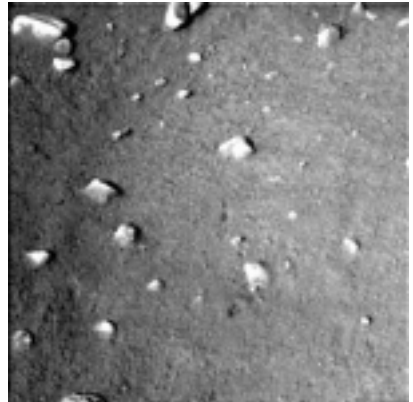
Deployed Biobarrier and MET



Footpad

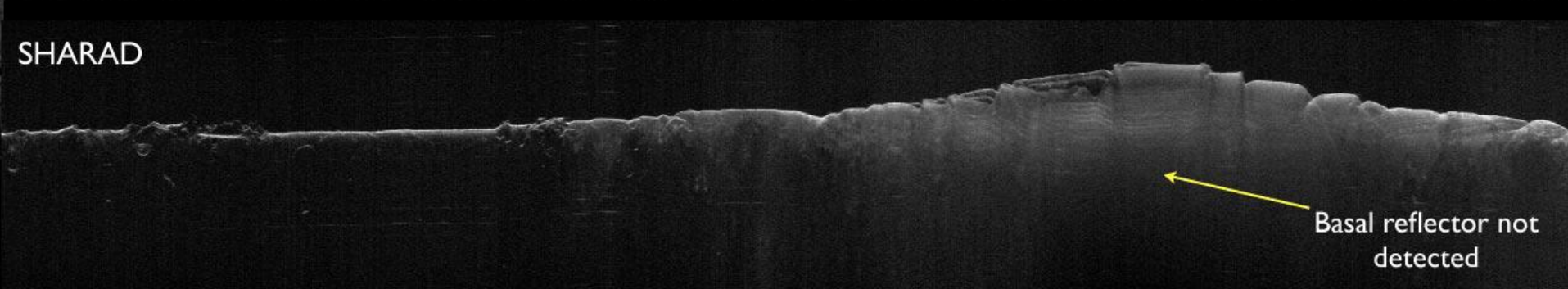
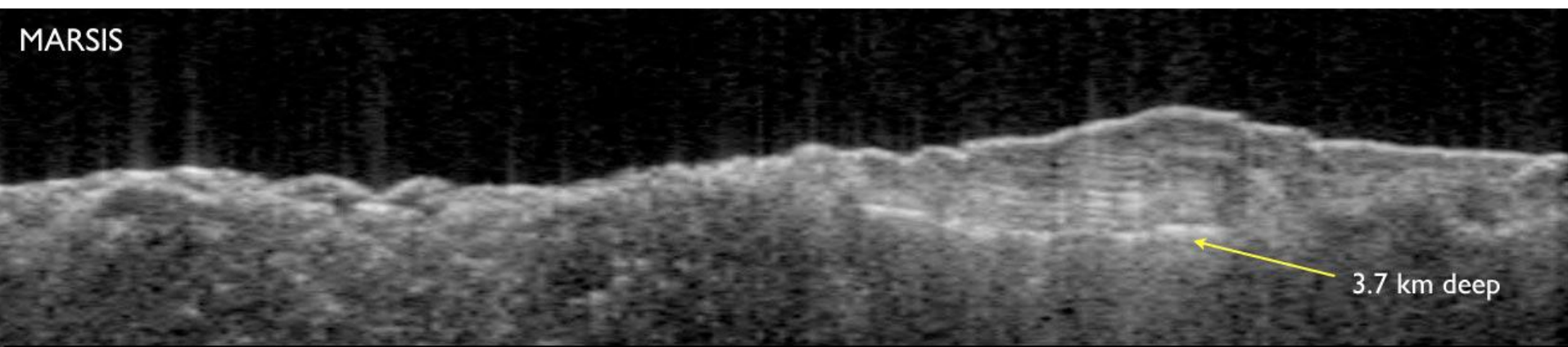
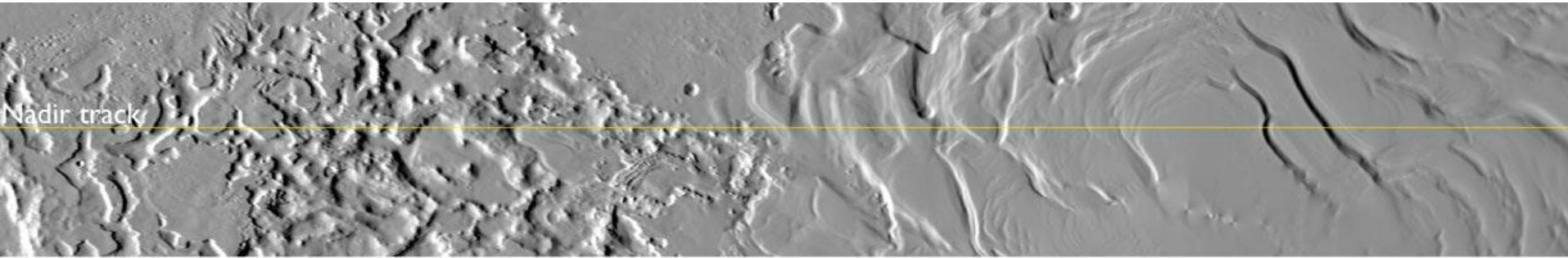


Polygons



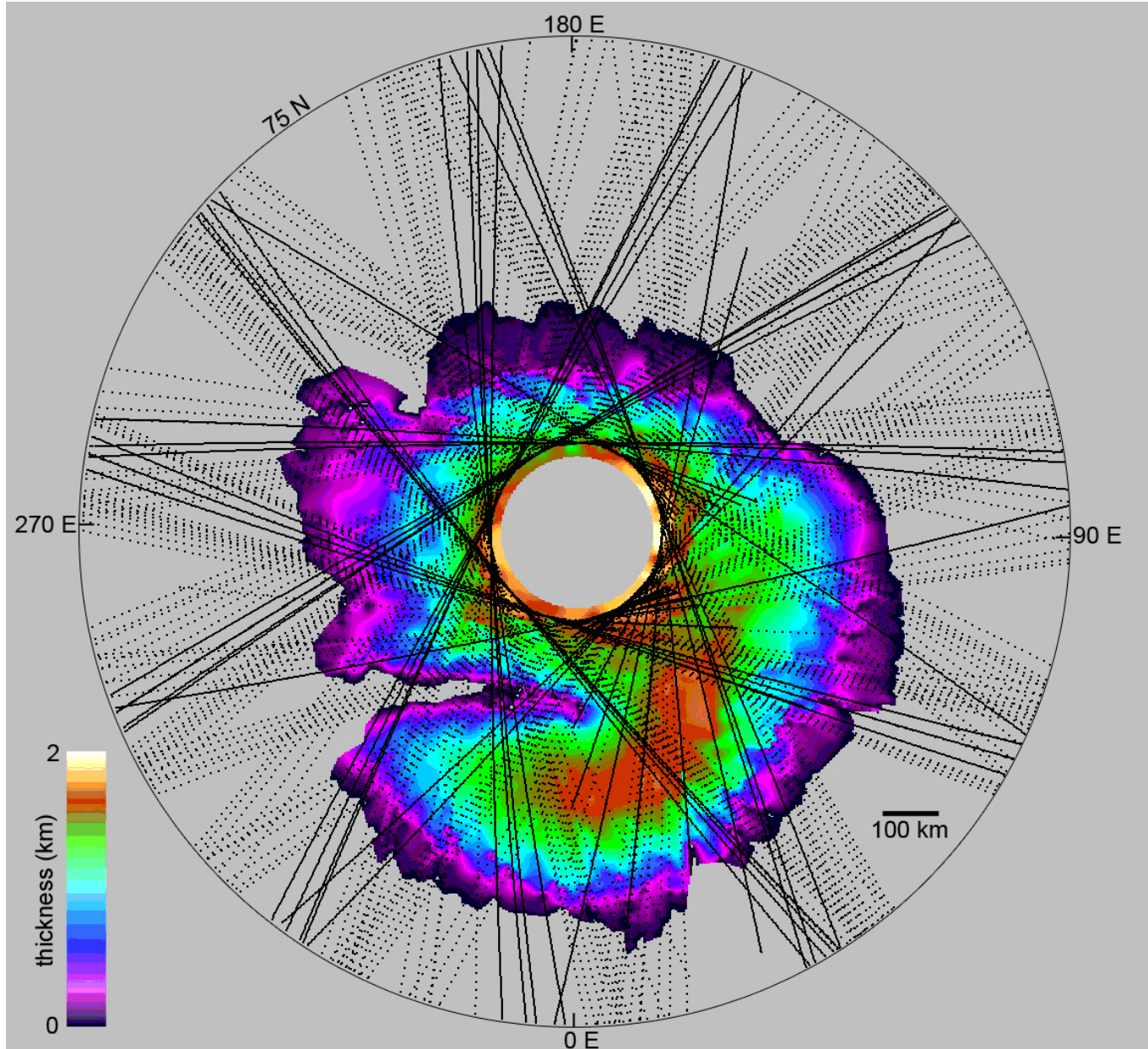
Soil and Cobbles

Layered Deposits





Thick Martian Crust

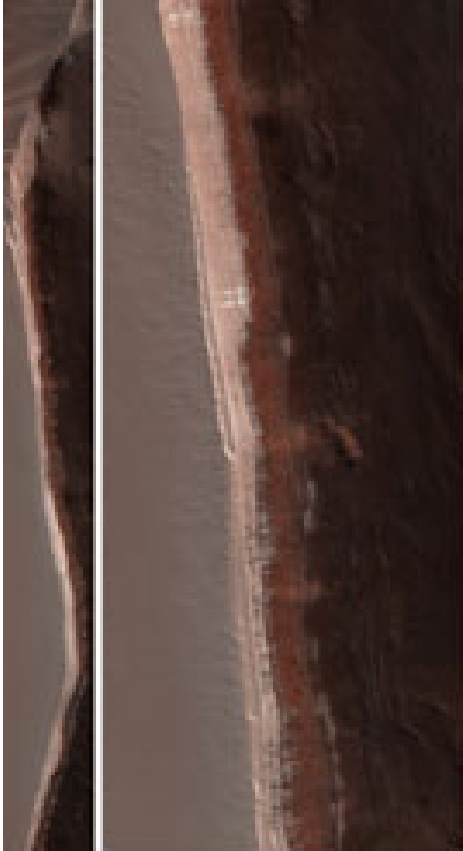


Phobos



Avalanches

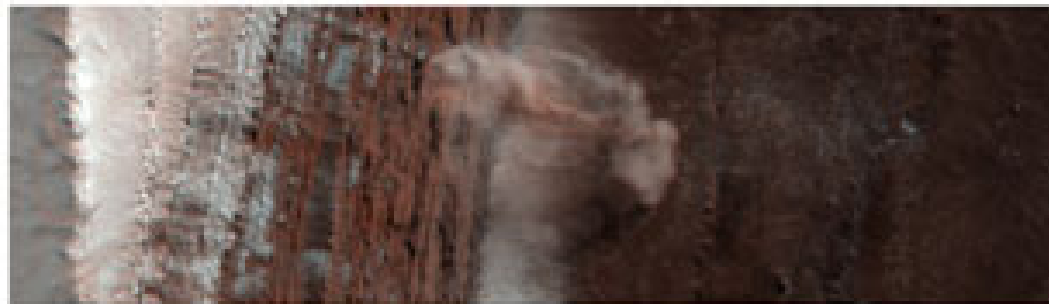
PSP_007338_2640



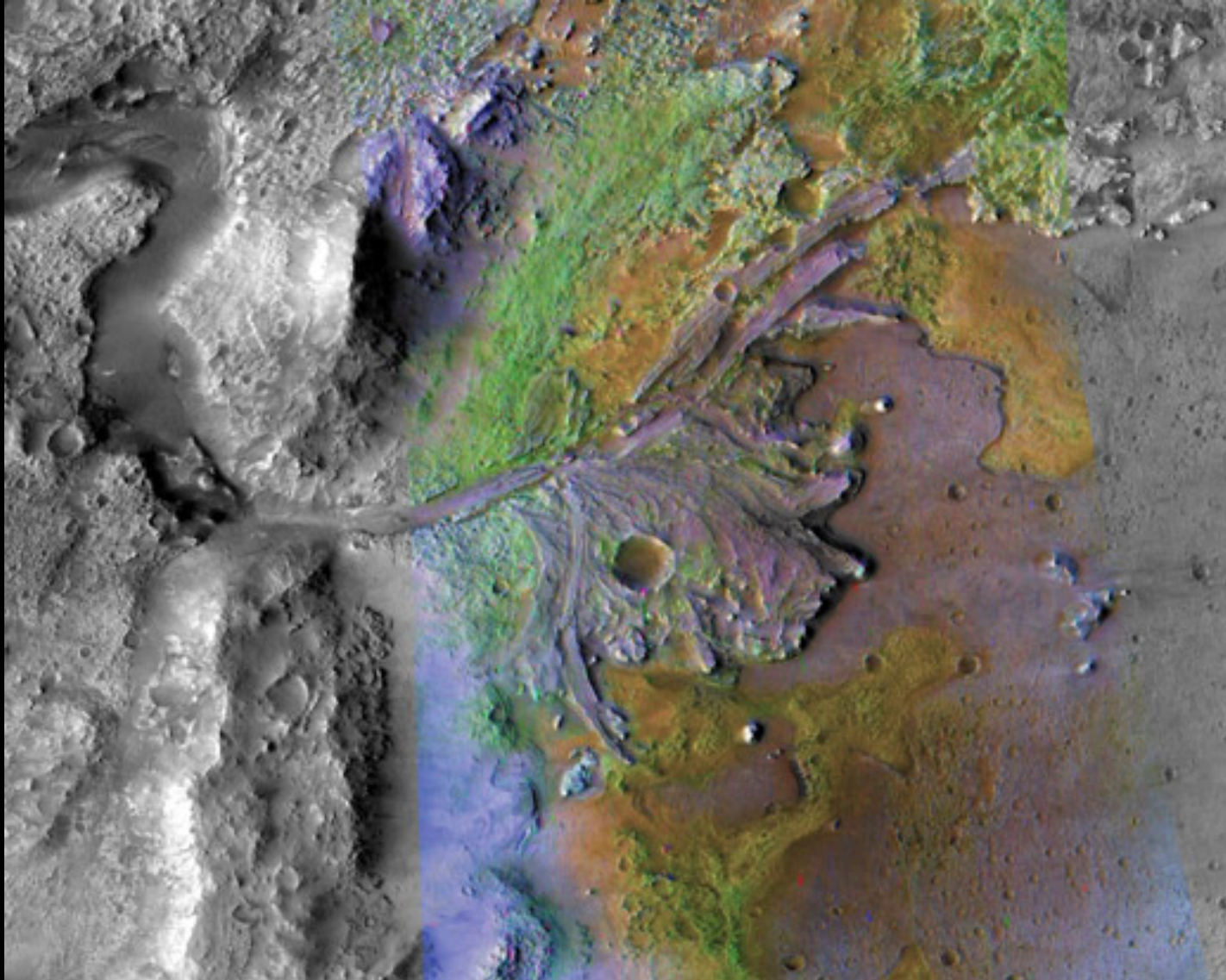
"Ingrid's Avalanches" 2008 Feb 19



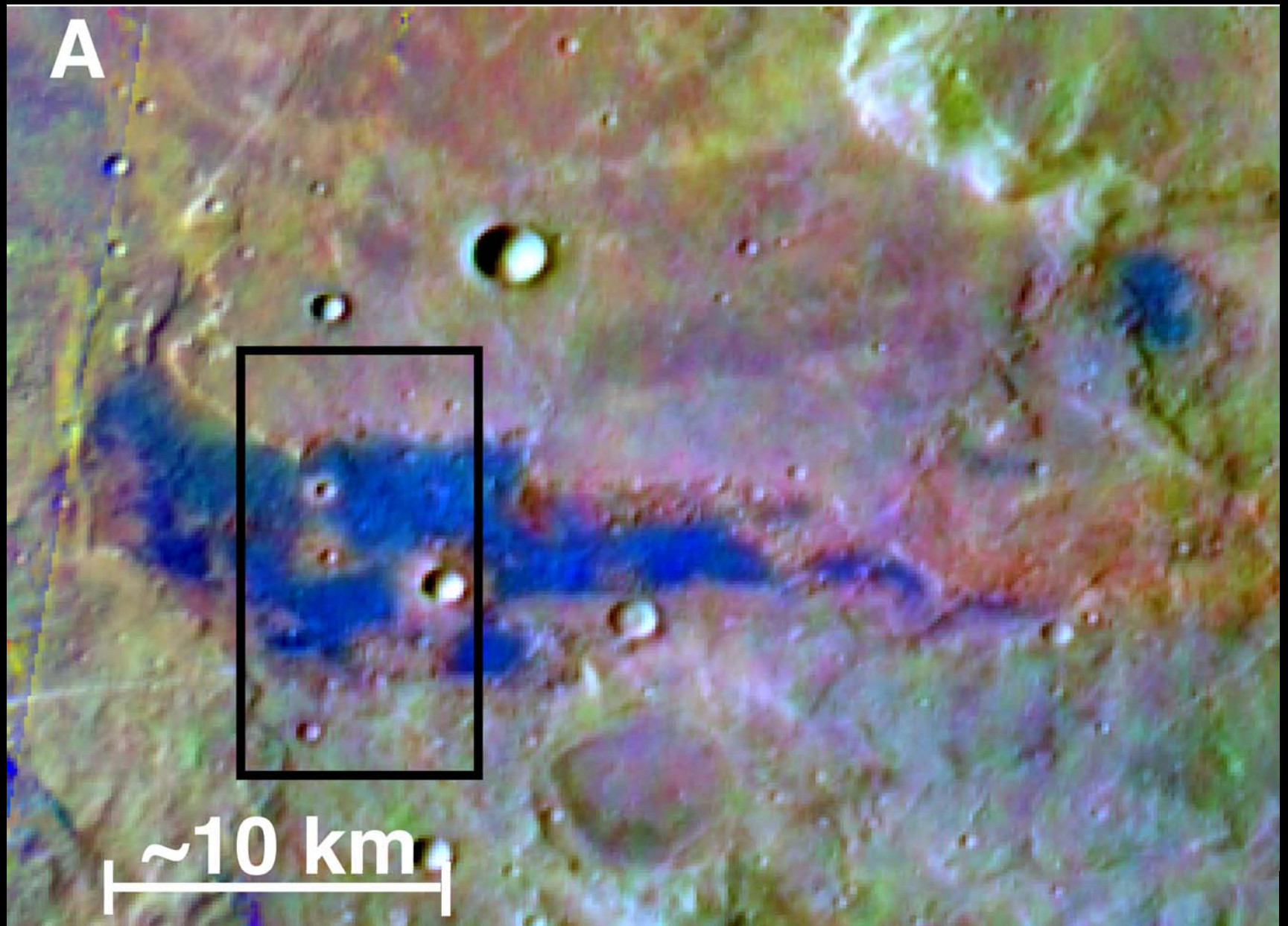
83.7N 235.8E



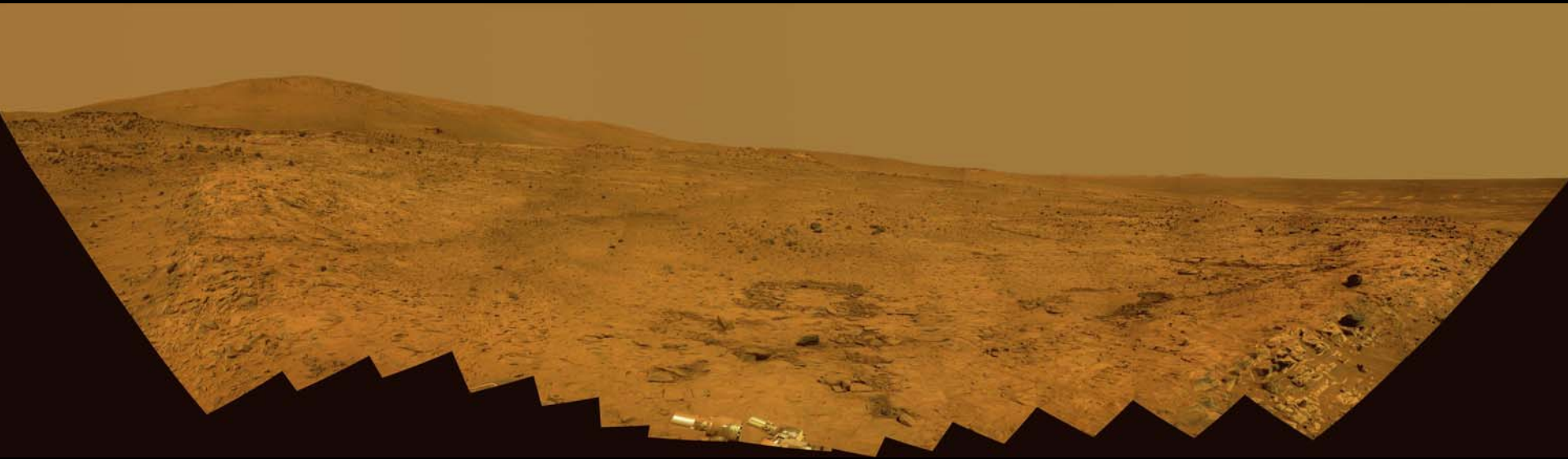
Jezeero Crater



Chlorides



Spirit's 3rd Winter



Opportunity Sol 1634



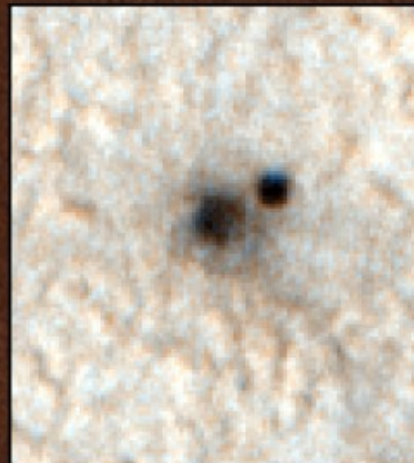


Phoenix Lander



Backshell

Parachute



Heat Shield