

NOTE: This revised report of 06-SEP-2007 supercedes the corrected version of 04-SEP-2007 and the original publication of 31-AUG-2007. This revision includes the removal of four split blocks, as each was identified as having an Active Leasehold, one on page 14 - Amery Terrace (Map Number NG15-09), Block 317 and three on page 17 - De Soto Canyon (Map Number NH16-11), Blocks 89, 90, and 91. The prior version corrected an acreage error to Grand Isle (Map Number LA7), Block 21 on page 9.

MMS

U.S. Department of the Interior
Minerals Management Service
Gulf of Mexico OCS Region

Leasing Activities Information

CENTRAL GULF OF MEXICO LEASE SALE 205 October 3, 2007

UNLEASED SPLIT BLOCKS and AVAILABLE UNLEASED ACREAGE OF BLOCKS WITH ALIQUOTS AND IRREGULAR PORTIONS UNDER LEASE OR DEFERRED

For Oil and Gas Leases in the Gulf of Mexico

—MMS—



**UNLEASED SPLIT BLOCKS
and
AVAILABLE UNLEASED ACREAGE OF BLOCKS
WITH
ALIQUOTS AND IRREGULAR PORTIONS
UNDER LEASE OR DEFERRED**

INSTRUCTION TO BIDDERS

This package identifies the unleased Federal acreage along the offshore Louisiana, Mississippi, and Alabama Federal boundary and available unleased acreages of blocks with portions under lease or deferred. If a block is bid upon, all available unleased acreage within that block must be bid upon.

Method of bidding – As described in the final Notice of Lease Sale 205.

Split and irregular blocks leased as a result of the sale will be legally described by using X and Y coordinates. Any specific questions pertaining to the unleased split blocks, or those with portions under lease, should be referred to Ms. Pat Bryars (504) 736-2763.

CENTRAL GULF OF MEXICO LEASE SALE 205
 Blocks list by map area and block number sequence

LA1 West Cameron

26
 27
 29
 31
 56
 192

LA2 East Cameron

2
 3
 8
 9
 10
 17
 20
 21
 22
 194

LA3 Vermilion

12
 15
 20
 34
 57
 217
 226

**LA3D South Marsh Island
 North**

221
 241
 252

LA4 Eugene Island

9
 11
 12
 12A
 18
 25
 34
 35
 90
 93
 116
 214
 253

LA4A Eugene Island South

287

LA5 Ship Shoal

2
 8
 9
 10
 13
 16
 24
 38
 49
 225

LA6 South Timbalier

9
 10
 16
 17
 18
 19
 20

LA6B South Pelto

3

LA6C Bay Marchand

4
 5

LA7 Grand Isle

15
 21
 25
 44
 52
 82

LA8 West Delta

16
 17
 25
 26
 35
 81

LA8A West Delta South

111

LA9 South Pass

17
 29
 31
 32
 34
 35
 36
 42
 57

LA9A South Pass S&E

66
 78

LA10 Main Pass

6
18
43
44
55
57
58
68
92
107
127
152

LA10B Breton Sound

24
25
40
44

LA11 Chandeleur

8
15
16

LA12 Sabine Pass

3
5
6

NG15-05 Keathley Canyon

199

**NG15-08 Sigsbee
Escarpment**

151
195
196
240
241
285
286
287
291
292
293

**NG15-08 Sigsbee
Escarpment (continued)**

294
295
296
297
298
342
343
344
345
346
347
348
349

NG15-09 Amery Terrace

162
163
164
165
166
199
200
201
202
203
204
205
206
210
211
212
213
214
215
216
217
218
219
235
236
237
238
239
240
241
242
243
244
245
246
247
248
249
293
294
295

**NG15-09 Amery Terrace
(continued)**

243
277
278
279
309
310
311
312
313
314
315
316

NG16-07 Lund South

177
178
179
180
181
182
183
184
185
186
187
188
232
233
234
235
236
237
238
239
240
241
242
243
244
245
246
247
248
249
293
294
295

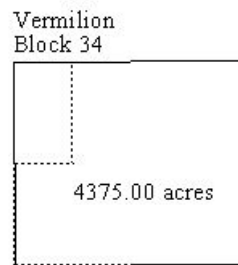
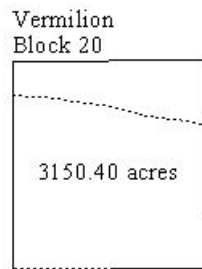
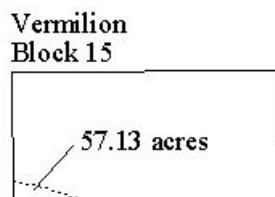
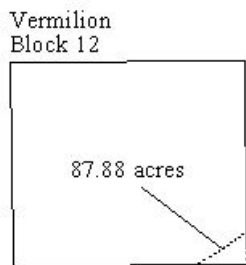
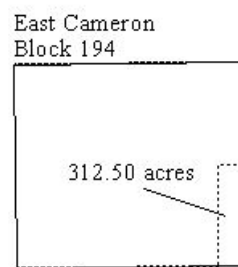
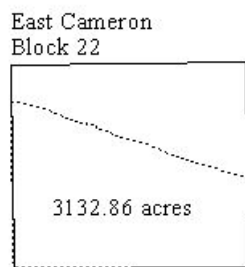
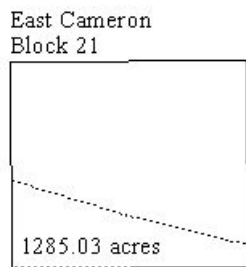
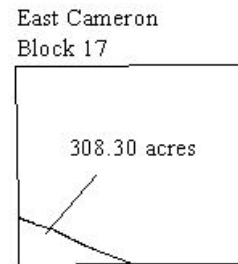
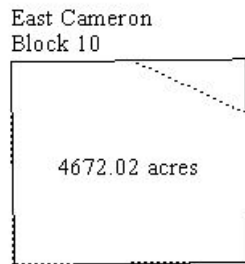
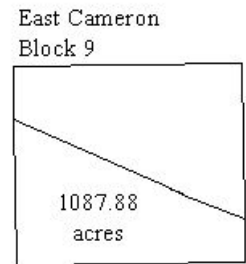
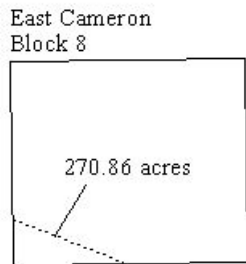
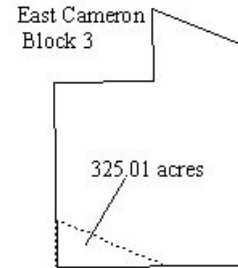
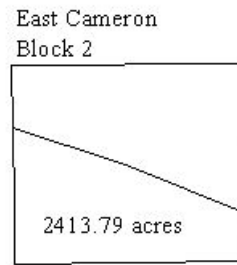
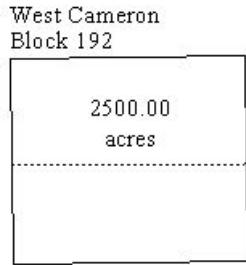
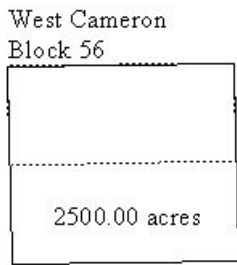
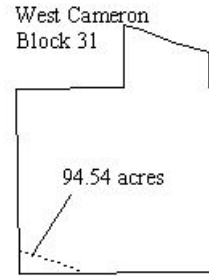
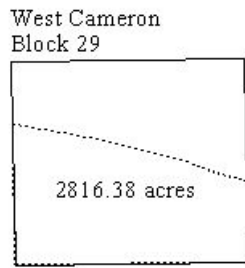
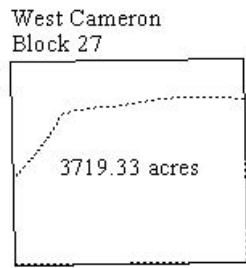
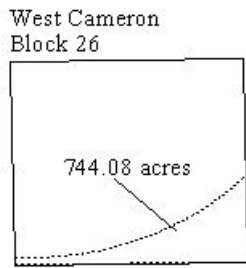
NH16-04 Mobile

765
766
767
809
813
814
816
817
818
819
820
829
853
862
897
898

NH16-11 De Soto Canyon

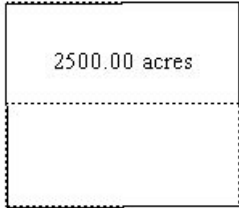
138
140
237
281
325
326
370
414
458

CENTRAL GULF OF MEXICO LEASE SALE 205
Split Block Diagrams

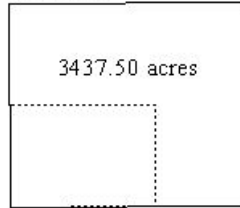


CENTRAL GULF OF MEXICO LEASE SALE 205
 Split Block Diagrams (continued)

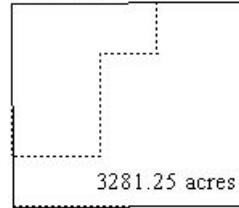
Vermilion
Block 57



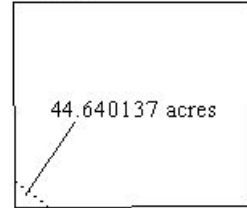
Vermilion
Block 217



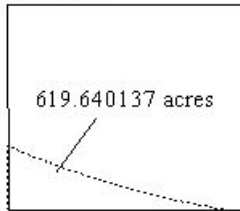
Vermilion
Block 226



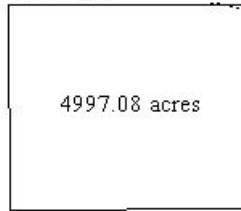
South Marsh Island North
Block 221



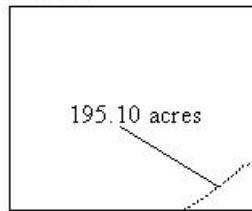
South Marsh Island North
Block 241



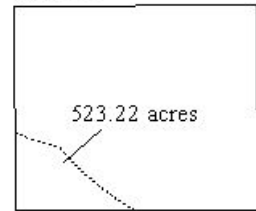
South Marsh Island North
Block 252



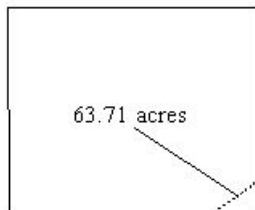
Eugene Island
Block 9



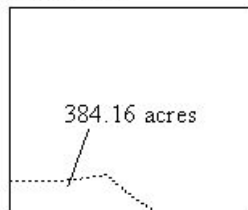
Eugene Island
Block 11



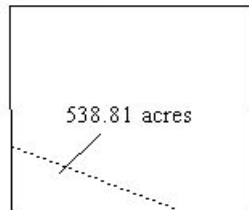
Eugene Island
Block 12



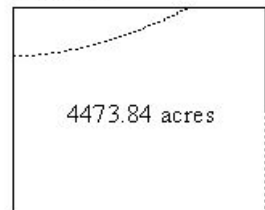
Eugene Island
Block 12A



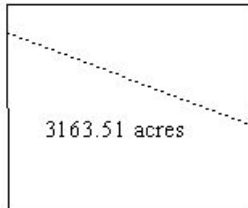
Eugene Island
Block 18



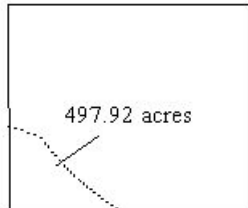
Eugene Island
Block 25



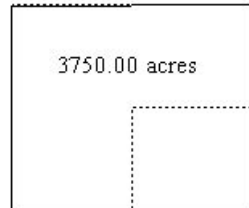
Eugene Island
Block 34



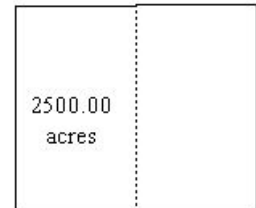
Eugene Island
Block 35



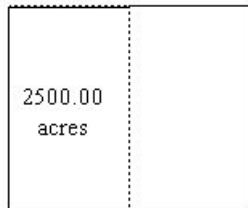
Eugene Island
Block 90



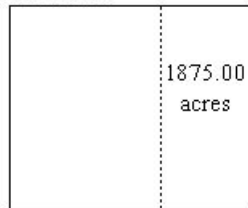
Eugene Island
Block 93



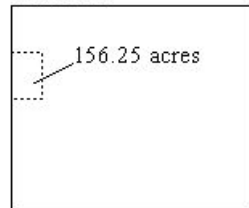
Eugene Island
Block 116



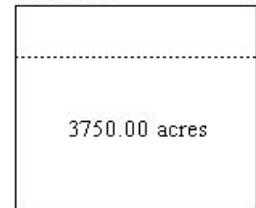
Eugene Island
Block 214



Eugene Island
Block 253

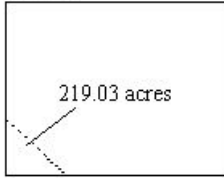


Eugene Island South
Block 287

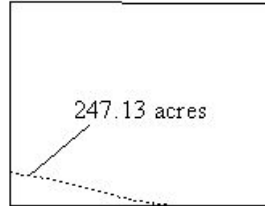


CENTRAL GULF OF MEXICO LEASE SALE 205
 Split Block Diagrams (continued)

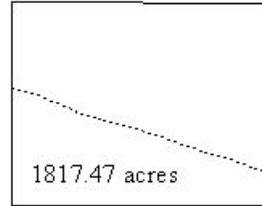
Ship Shoal
Block 2



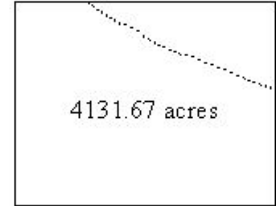
Ship Shoal
Block 8



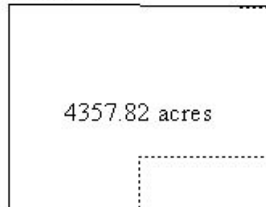
Ship Shoal
Block 9



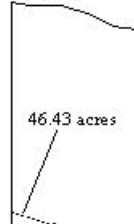
Ship Shoal
Block 10



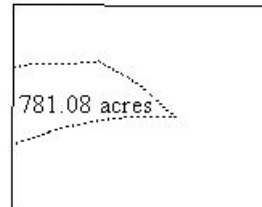
Ship Shoal
Block 13



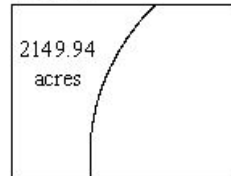
Ship Shoal
Block 16



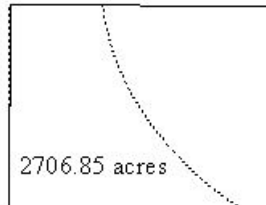
Ship Shoal
Block 24



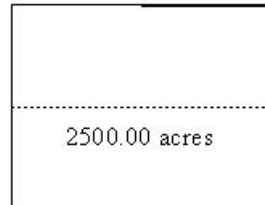
Ship Shoal
Block 38



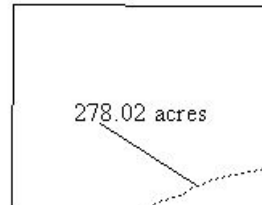
Ship Shoal
Block 49



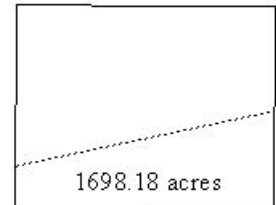
Ship Shoal
Block 225



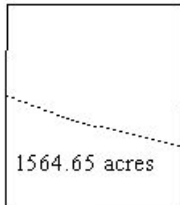
South Timbalier
Block 9



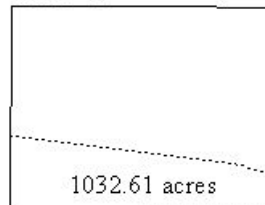
South Timbalier
Block 10



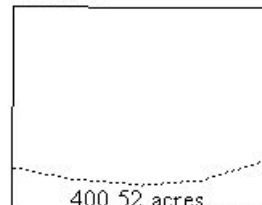
South Timbalier
Block 16



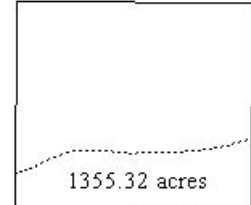
South Timbalier
Block 17



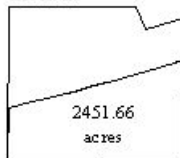
South Timbalier
Block 18



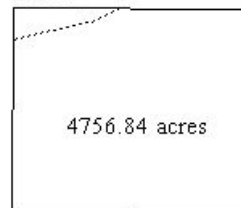
South Timbalier
Block 19



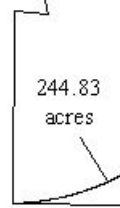
South Timbalier
Block 20



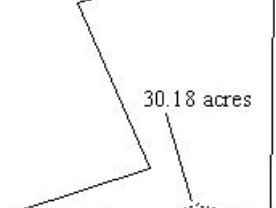
South Pelto
Block 3



Bay Marchand
Block 4



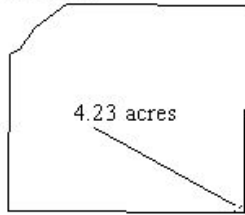
Bay Marchand
Block 5



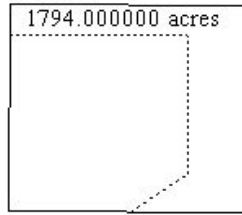
NOTE: This revised report of 04-SEP-2007 supersedes the version of 31-AUG-2007 due to an acreage error for Grand Isle (Map Number LA7), Block 21

CENTRAL GULF OF MEXICO LEASE SALE 205
Split Block Diagrams (continued)

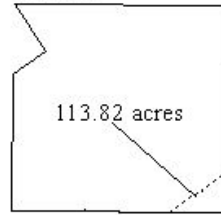
Grand Isle
Block 15



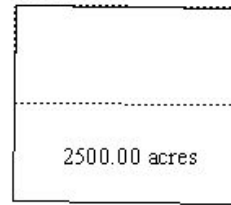
Grand Isle
Block 21



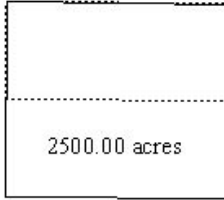
Grand Isle
Block 25



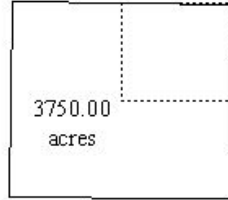
Grand Isle
Block 44



Grand Isle
Block 52



Grand Isle
Block 82



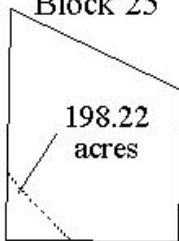
West Delta
Block 16



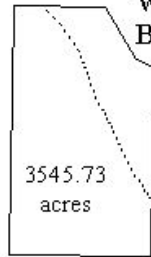
West Delta
Block 17



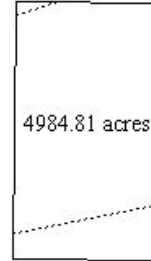
West Delta
Block 25



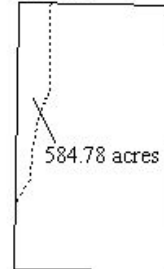
West Delta
Block 26



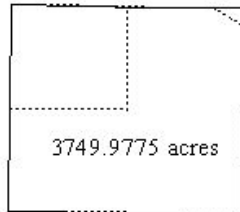
West Delta
Block 35



West Delta
Block 81



West Delta South
Block 111



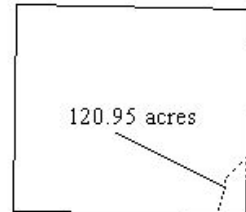
South Pass
Block 17



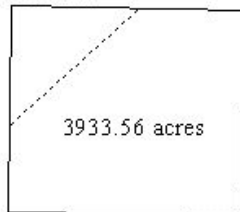
South Pass
Block 29



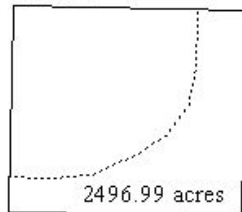
South Pass
Block 31



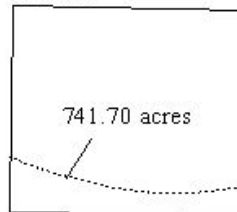
South Pass
Block 32



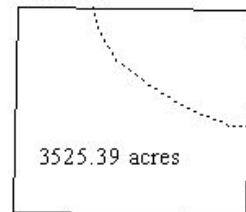
South Pass
Block 34



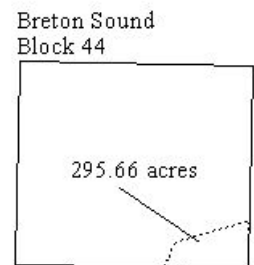
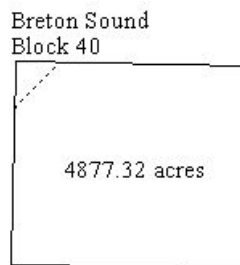
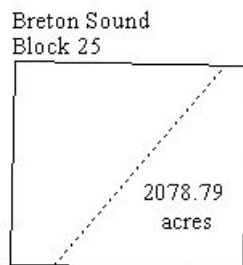
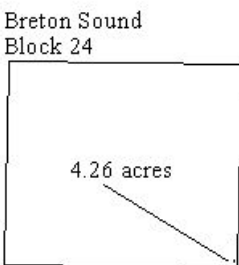
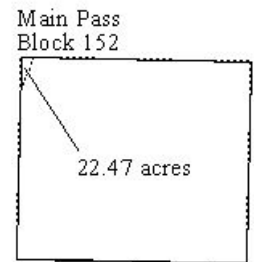
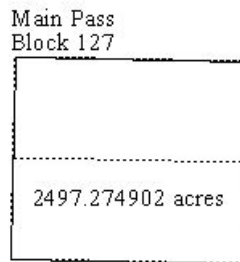
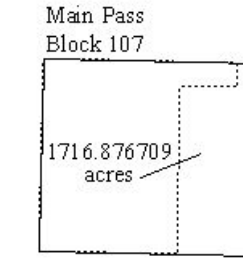
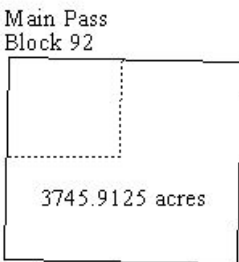
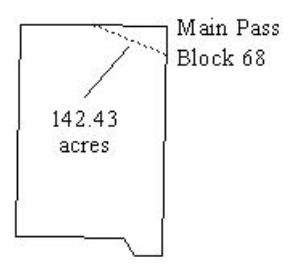
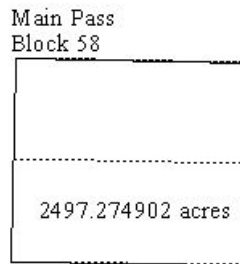
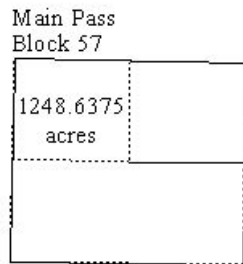
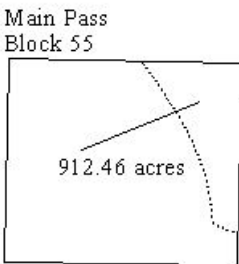
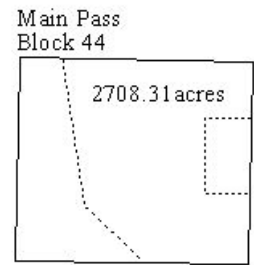
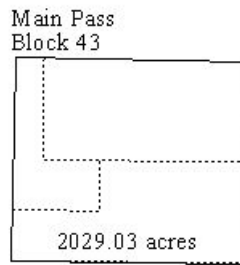
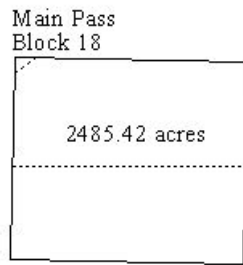
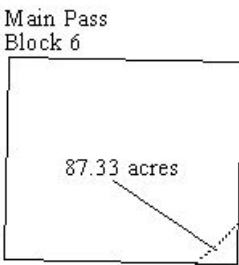
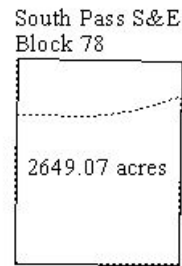
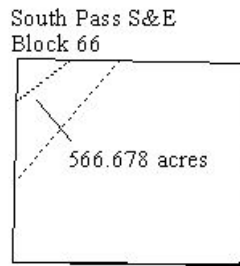
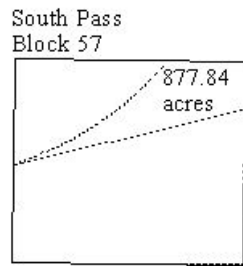
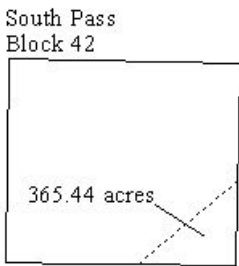
South Pass
Block 35



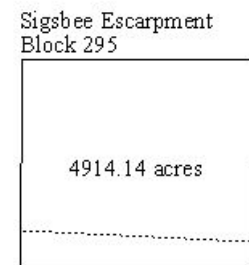
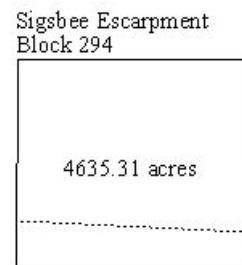
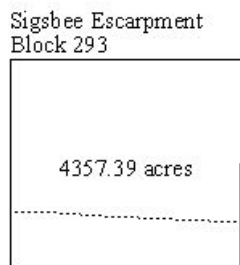
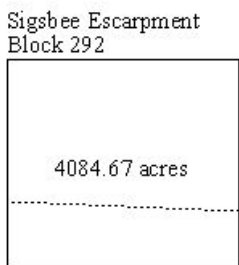
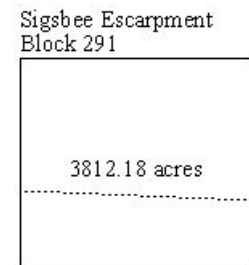
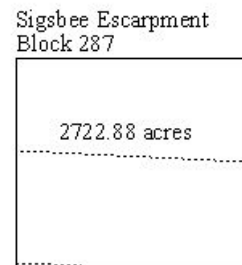
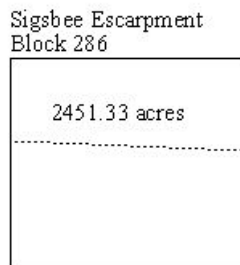
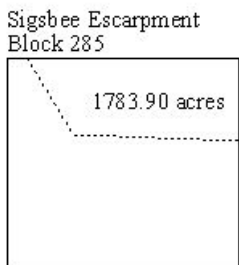
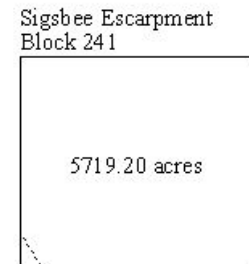
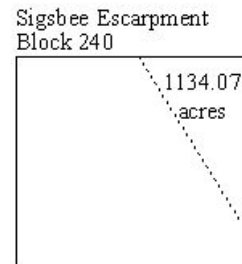
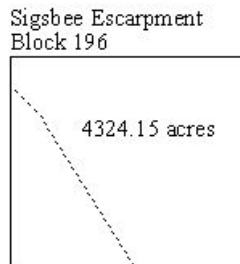
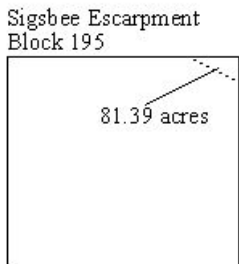
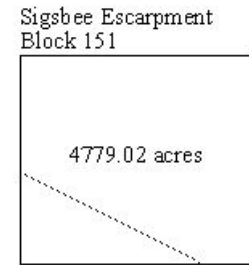
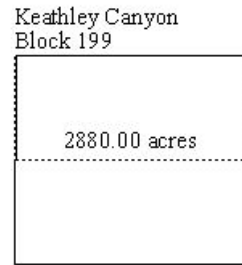
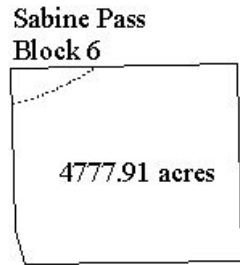
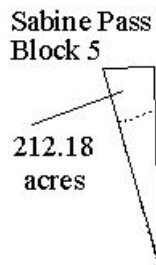
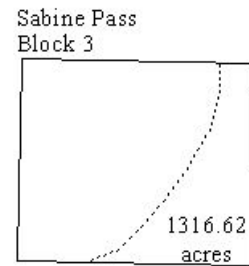
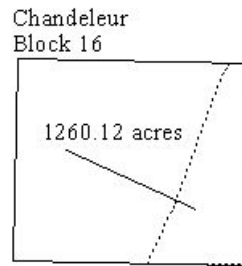
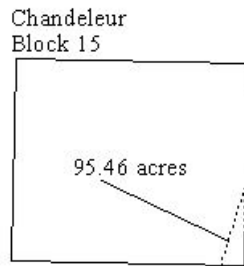
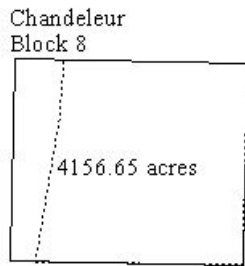
South Pass
Block 36



CENTRAL GULF OF MEXICO LEASE SALE 205
 Split Block Diagrams (continued)

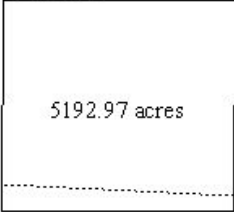


CENTRAL GULF OF MEXICO LEASE SALE 205
 Split Block Diagrams (continued)

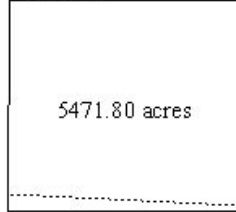


CENTRAL GULF OF MEXICO LEASE SALE 205
 Split Block Diagrams (continued)

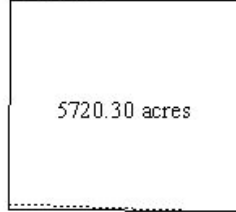
Sigsbee Escarpment
Block 296



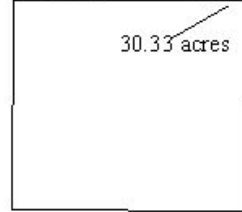
Sigsbee Escarpment
Block 297



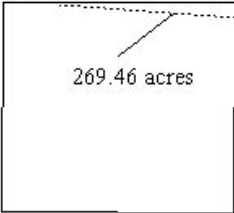
Sigsbee Escarpment
Block 298



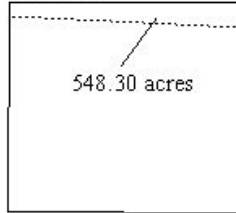
Sigsbee Escarpment
Block 342



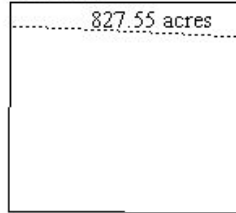
Sigsbee Escarpment
Block 343



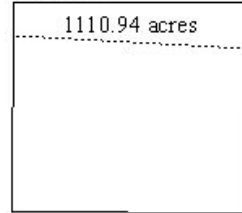
Sigsbee Escarpment
Block 344



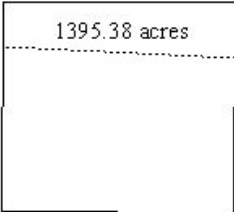
Sigsbee Escarpment
Block 345



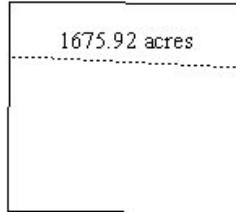
Sigsbee Escarpment
Block 346



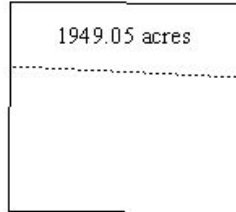
Sigsbee Escarpment
Block 347



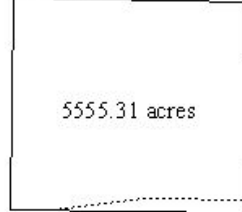
Sigsbee Escarpment
Block 348



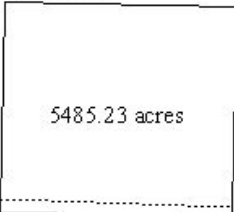
Sigsbee Escarpment
Block 349



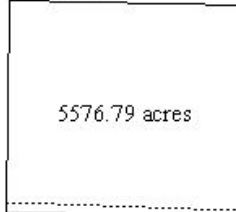
Amery Terrace
Block 162



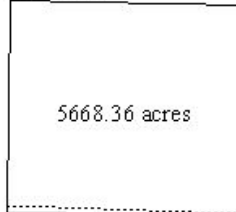
Amery Terrace
Block 163



Amery Terrace
Block 164



Amery Terrace
Block 165



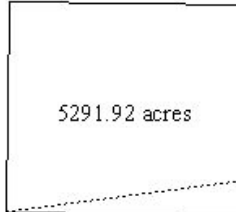
Amery Terrace
Block 166



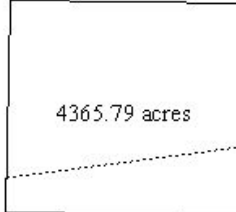
Amery Terrace
Block 199



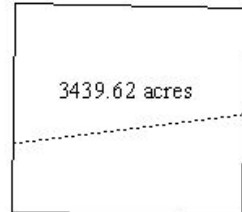
Amery Terrace
Block 200



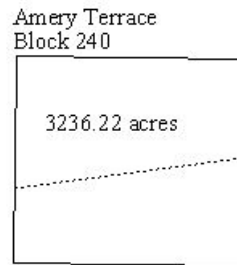
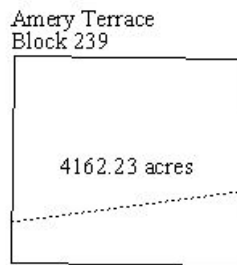
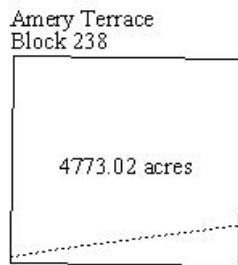
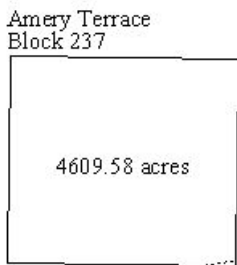
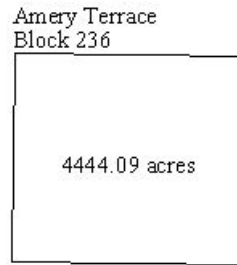
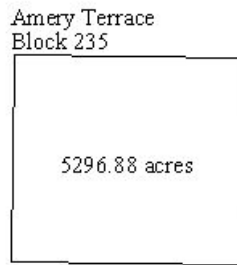
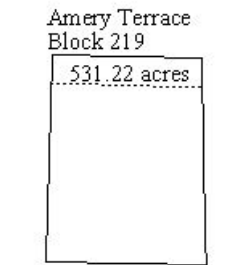
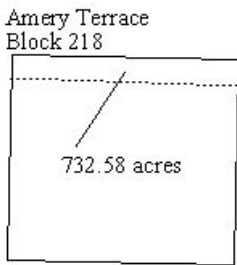
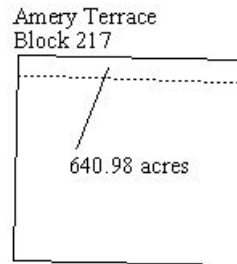
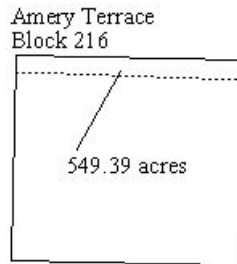
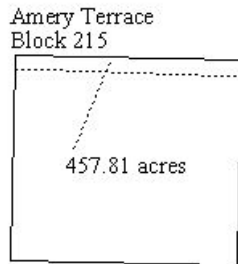
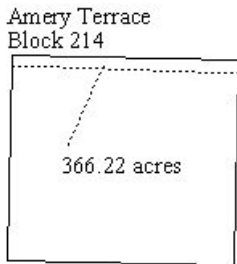
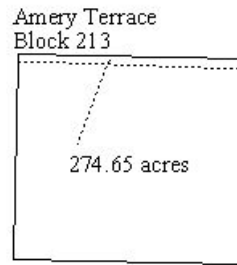
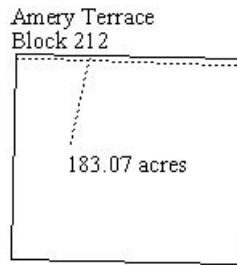
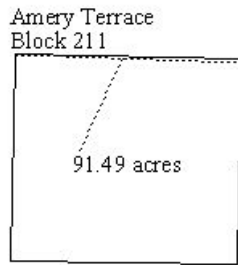
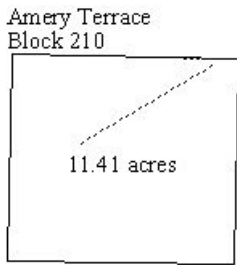
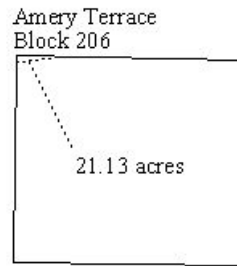
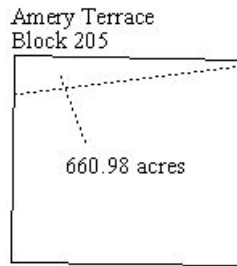
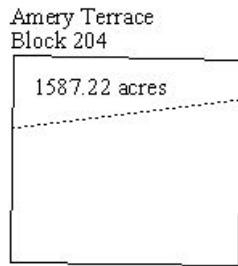
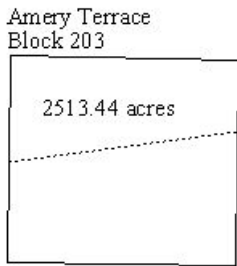
Amery Terrace
Block 201



Amery Terrace
Block 202



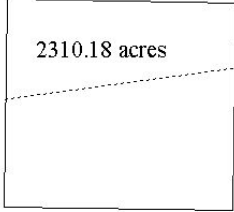
CENTRAL GULF OF MEXICO LEASE SALE 205
 Split Block Diagrams (continued)



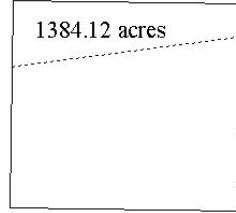
NOTE: This revised report of 06-SEP-2007 supercedes the versions of 04-SEP-2007 and 31-AUG-2007. This latest revision cites the removal of Amery Terrace (Map Number NG15-09), Block 317. This block is currently leased and is therefore not available for bid in the upcoming lease sale.

CENTRAL GULF OF MEXICO LEASE SALE 205
Split Block Diagrams (continued)

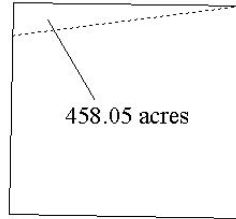
Amery Terrace
Block 241



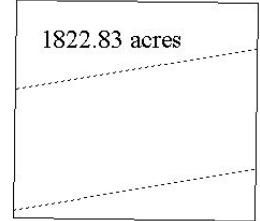
Amery Terrace
Block 242



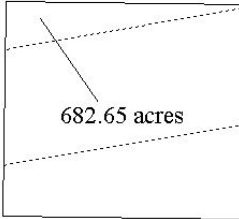
Amery Terrace
Block 243



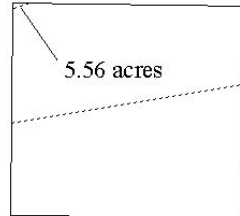
Amery Terrace
Block 277



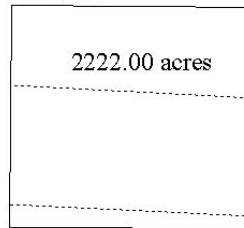
Amery Terrace
Block 278



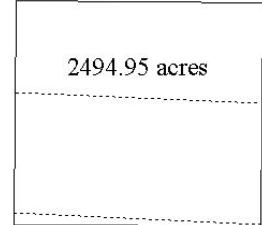
Amery Terrace
Block 279



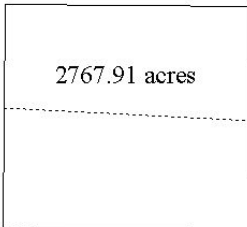
Amery Terrace
Block 309



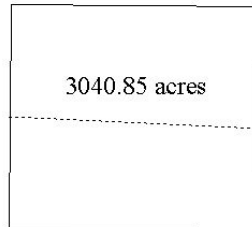
Amery Terrace
Block 310



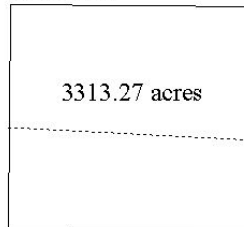
Amery Terrace
Block 311



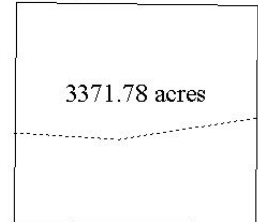
Amery Terrace
Block 312



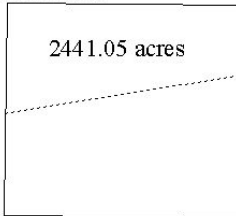
Amery Terrace
Block 313



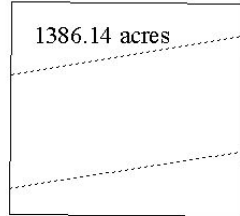
Amery Terrace
Block 314



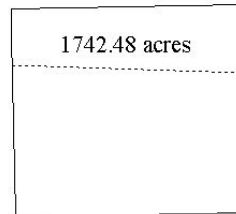
Amery Terrace
Block 315



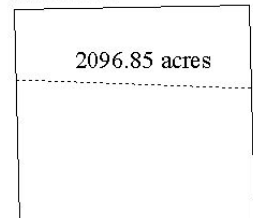
Amery Terrace
Block 316



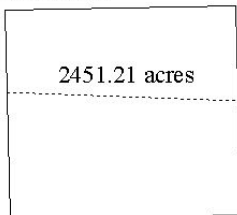
Lund South
Block 177



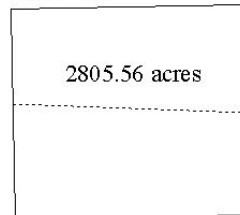
Lund South
Block 178



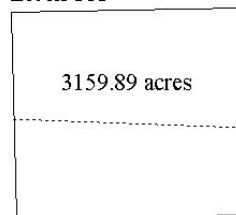
Lund South
Block 179



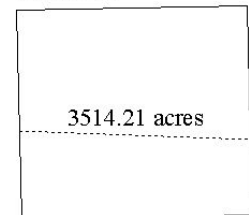
Lund South
Block 180



Lund South
Block 181

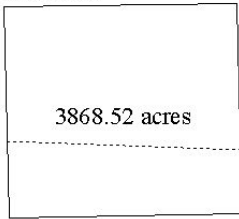


Lund South
Block 182

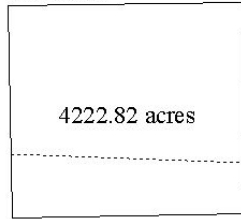


CENTRAL GULF OF MEXICO LEASE SALE 205
 Split Block Diagrams (continued)

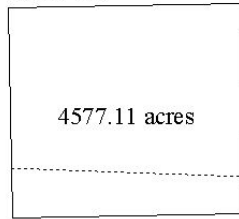
Lund South
Block 183



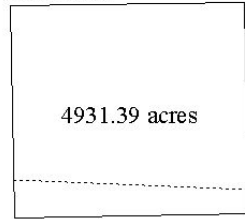
Lund South
Block 184



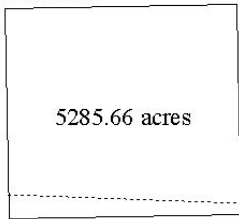
Lund South
Block 185



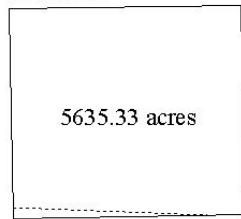
Lund South
Block 186



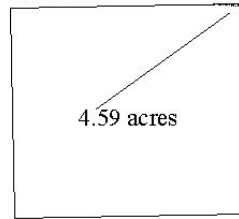
Lund South
Block 187



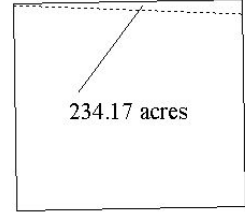
Lund South
Block 188



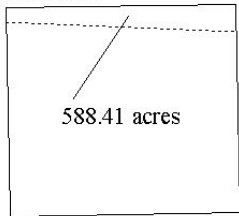
Lund South
Block 232



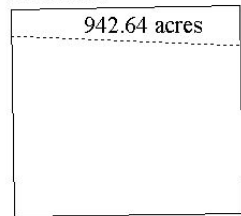
Lund South
Block 233



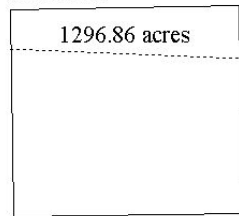
Lund South
Block 234



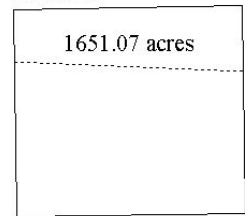
Lund South
Block 235



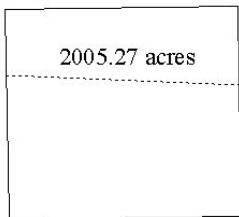
Lund South
Block 236



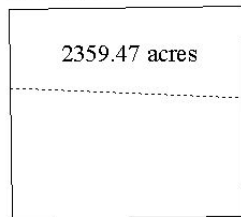
Lund South
Block 237



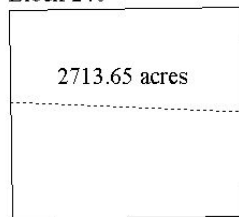
Lund South
Block 238



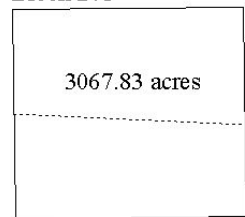
Lund South
Block 239



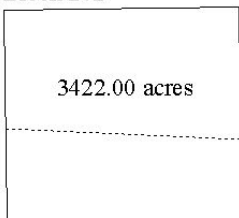
Lund South
Block 240



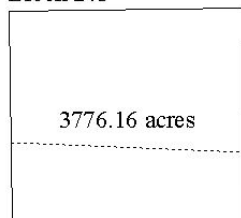
Lund South
Block 241



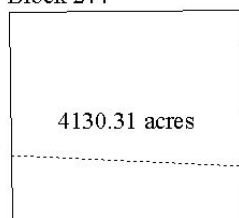
Lund South
Block 242



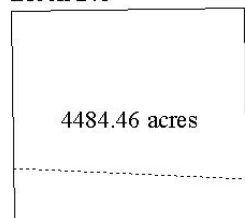
Lund South
Block 243



Lund South
Block 244

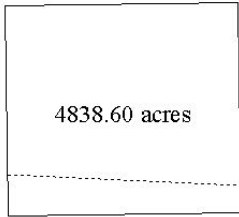


Lund South
Block 245

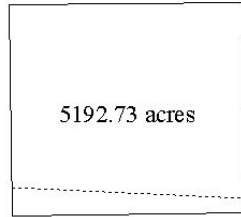


CENTRAL GULF OF MEXICO LEASE SALE 205
 Split Block Diagrams (continued)

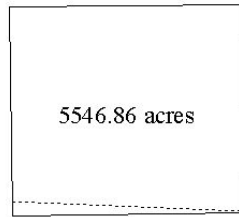
Lund South
Block 246



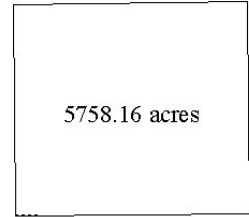
Lund South
Block 247



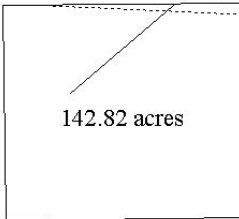
Lund South
Block 248



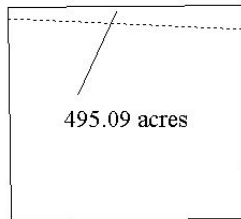
Lund South
Block 249



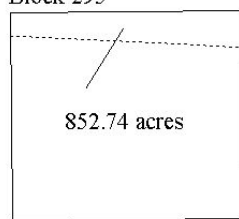
Lund South
Block 293



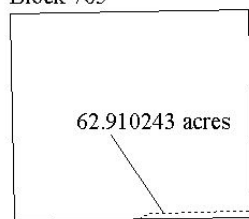
Lund South
Block 294



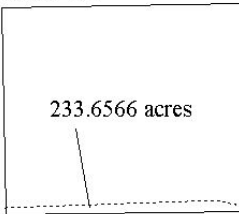
Lund South
Block 295



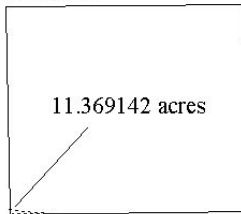
Mobile
Block 765



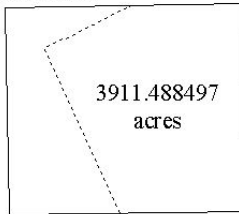
Mobile
Block 766



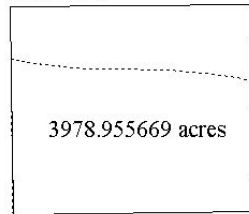
Mobile
Block 767



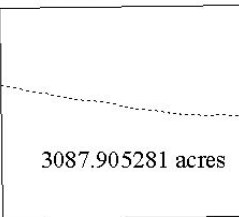
Mobile
Block 809



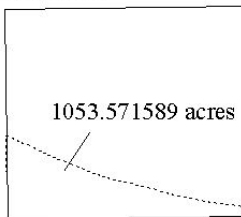
Mobile
Block 813



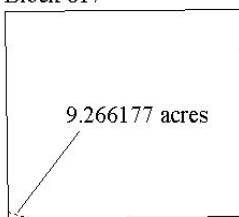
Mobile
Block 814



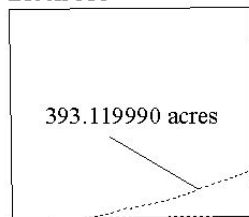
Mobile
Block 816



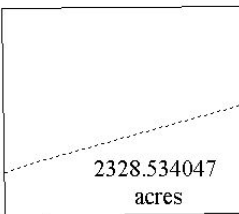
Mobile
Block 817



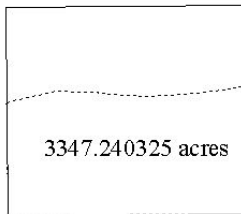
Mobile
Block 818



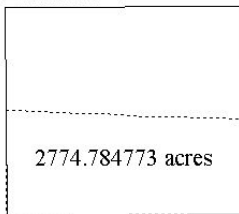
Mobile
Block 819



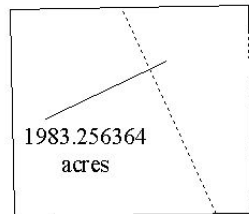
Mobile
Block 820



Mobile
Block 829



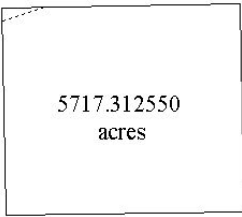
Mobile
Block 853



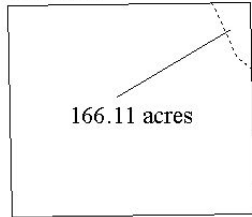
NOTE: This revised report of 06-SEP-2007 supercedes the versions of 04-SEP-2007 and 31-AUG-2007. This latest revision cites the removal of DeSoto Canyon (Map Number NH16-11), Blocks 89, 90, and 91. These blocks are currently leased and are therefore not available for bid in the upcoming lease sale.

CENTRAL GULF OF MEXICO LEASE SALE 205
Split Block Diagrams (*continued*)

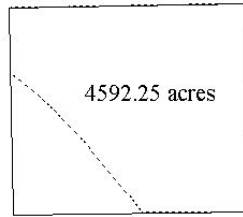
Mobile
Block 862



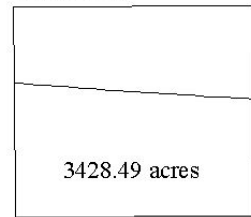
Mobile
Block 897



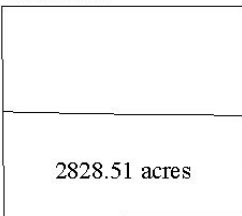
Mobile
Block 898



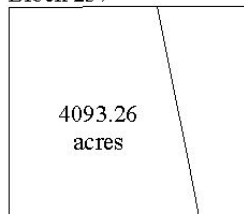
De Soto Canyon
Block 138



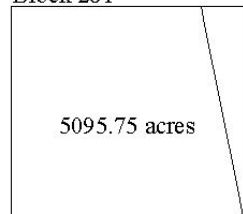
De Soto Canyon
Block 140



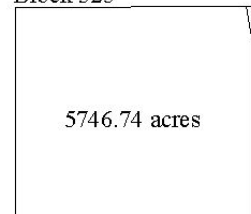
De Soto Canyon
Block 237



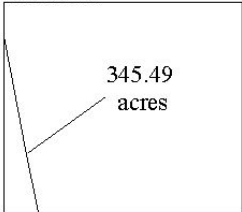
De Soto Canyon
Block 281



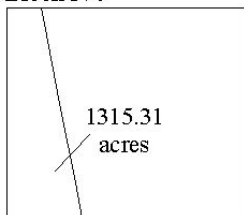
De Soto Canyon
Block 325



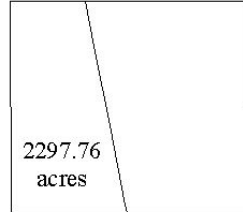
De Soto Canyon
Block 326



De Soto Canyon
Block 370



De Soto Canyon
Block 414



De Soto Canyon
Block 458

