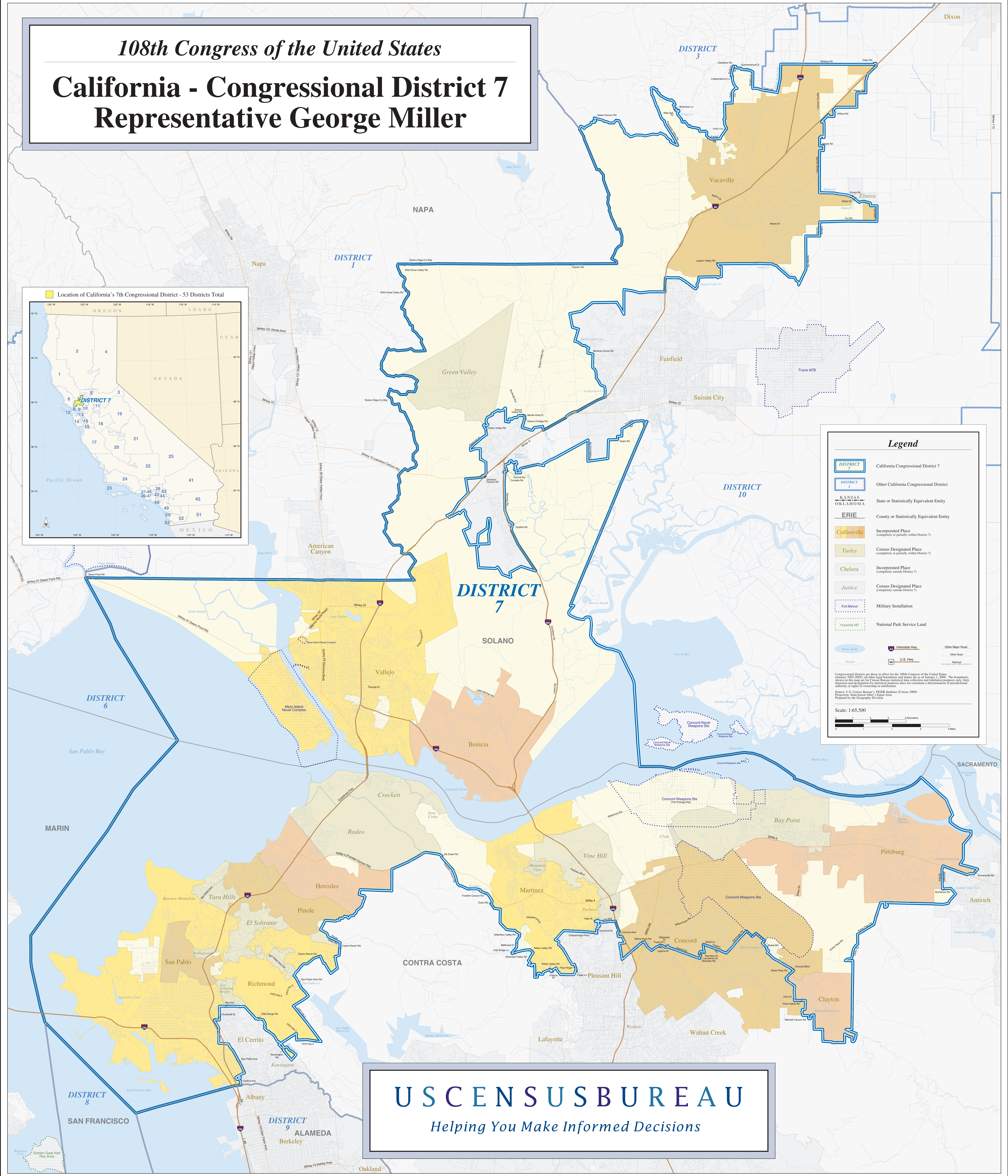


108th Congress of the United States

California - Congressional District 7

Representative George Miller



Legend

- DISTRICT 7** (Yellow outline): California Congressional District 7
- DISTRICT 2** (Blue outline): Other California Congressional District
- KANSAS, OKLAHOMA** (Light blue): State or Statistically Equivalent Entity
- ERIE** (Light green): County or Statistically Equivalent Entity
- Collinsville** (Light orange): Incorporated Place (completely or partially within District 7)
- Turley** (Light yellow): Census Designated Place (completely or partially outside District 7)
- Chelsea** (Light green): Incorporated Place (completely outside District 7)
- Justice** (Light yellow): Census Designated Place (completely outside District 7)
- Fort Belvoir** (Dotted pattern): Military Installation
- Yosemite NP** (Dotted pattern): National Park Service Land
- Water Body** (Blue): Water Body
- Stream** (Blue line): Stream
- Interstate Hwy** (Red and blue line): Interstate Highway
- U.S. Hwy** (Red line): U.S. Highway
- Other Major Road** (Grey line): Other Major Road
- Other Road** (Thin grey line): Other Road
- Trail** (Thin grey line): Trail

Scale: 1:65,500

0 1 2 3 4 Miles
0 1 2 3 4 Kilometers

Congressional districts are those in effect for the 108th Congress of the United States (January 2015-2017), all other legal boundaries and names are as of January 1, 2000. The boundaries shown on this map are for Census Bureau statistical data collection and tabulation purposes only; their depiction and description for statistical purposes does not constitute a determination of jurisdictional authority or rights of ownership or control.

Source: U.S. Census Bureau, "PERD" Database (Census 2000)
Project: State-based Alter's Equal Area
Prepared by the Geography Division

USCENSUSBUREAU
Helping You Make Informed Decisions