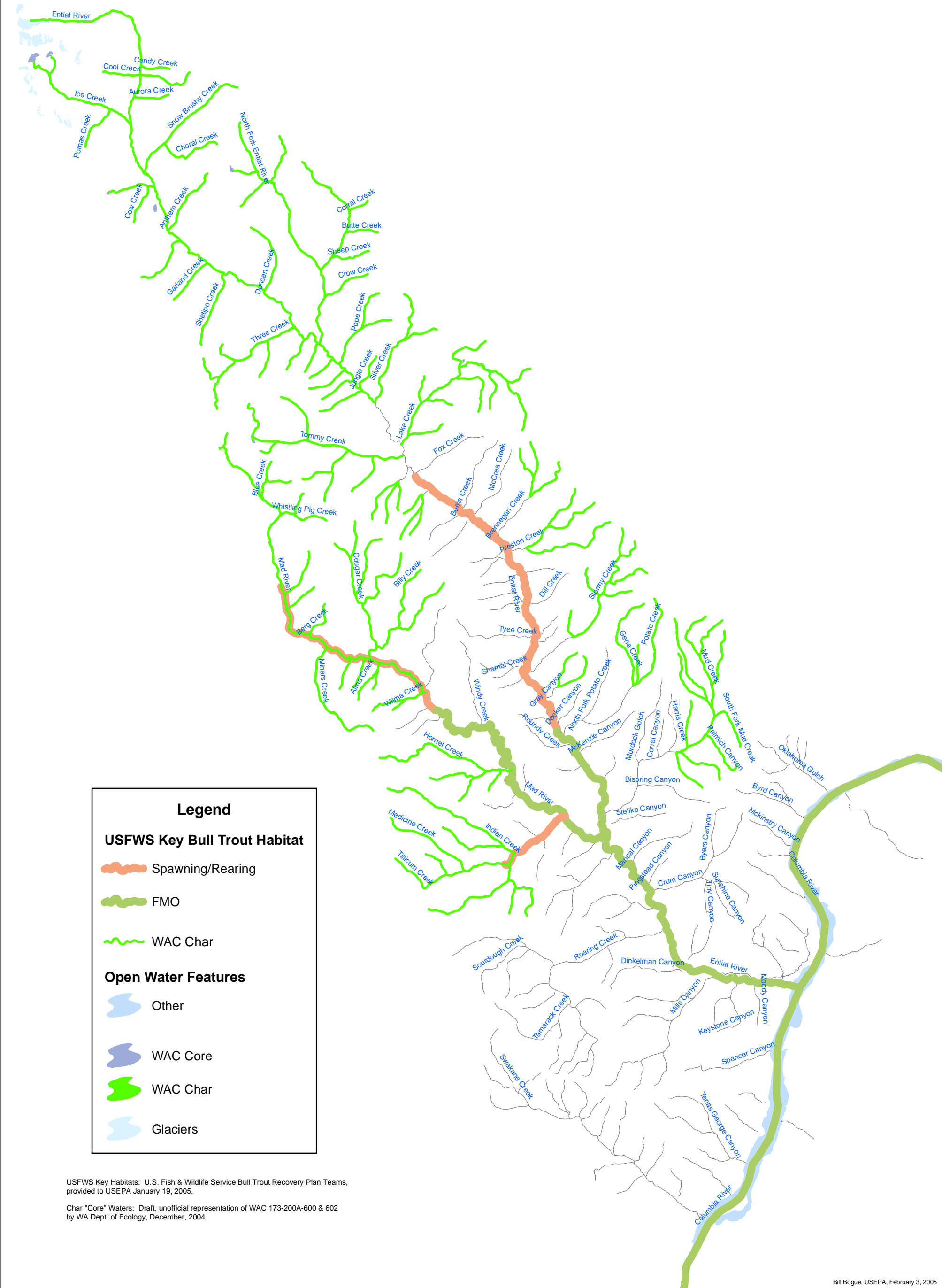


WRIA 46 ENTIA

Comparison of Bull Trout Key Habitat and
WA Ecology Proposed Char Core Waters



USFWS Key Habitats: U.S. Fish & Wildlife Service Bull Trout Recovery Plan Teams, provided to USEPA January 19, 2005.

Char "Core" Waters: Draft, unofficial representation of WAC 173-200A-600 & 602 by WA Dept. of Ecology, December, 2004.