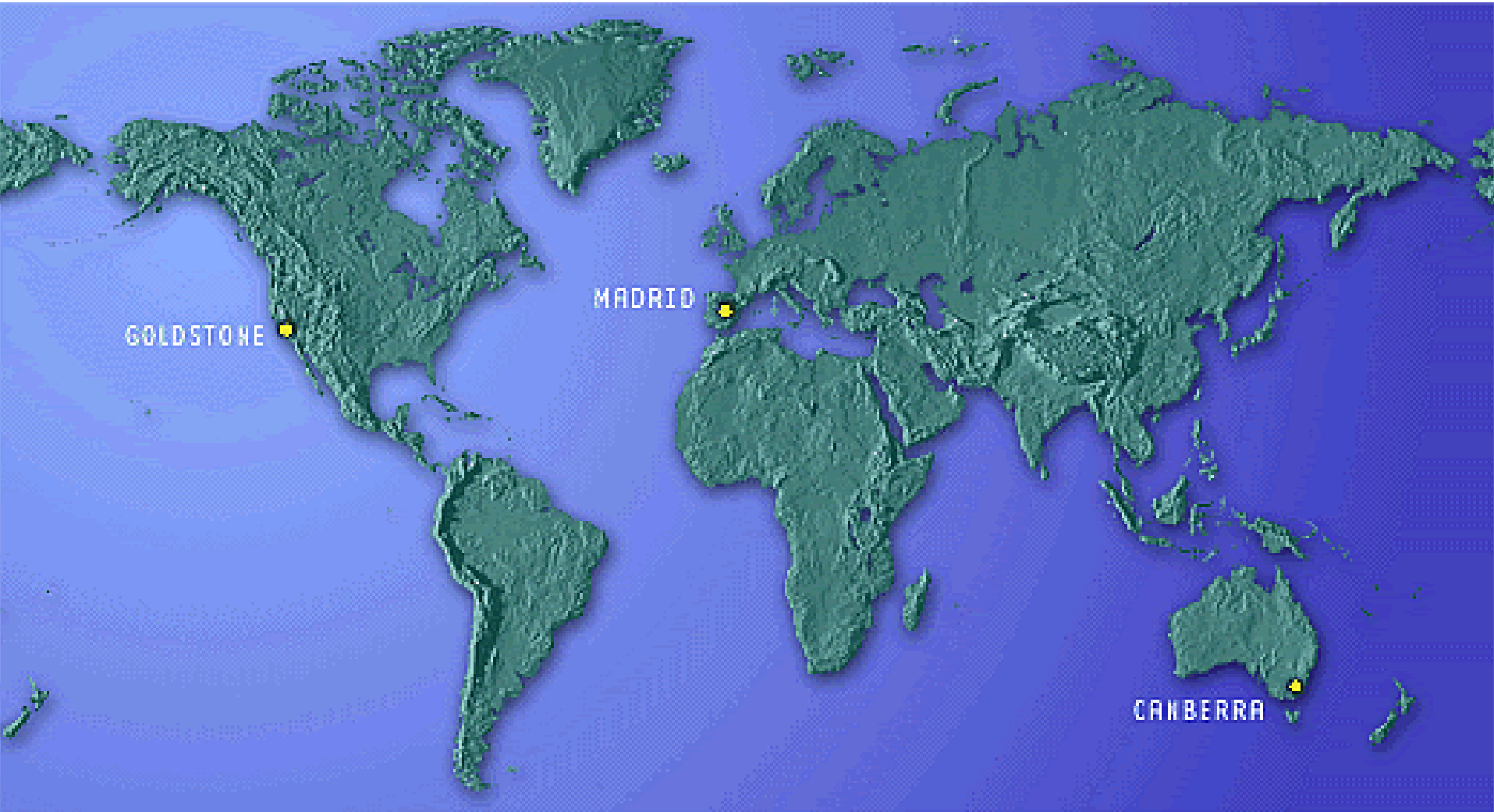


DSN Antenna Downtime Status and Forecast



<http://rapweb.jpl.nasa.gov/planning>

Antenna Downtime Status and Forecast

The following downtimes were approved for 2008 - 2010

- ❑ SPC-60 downtime for Commercial power installation task.
 - ❑ The request for Commercial Power Installation requirements and dates have changed
 - ❑ 2 12 hour blocks (0600-1800) each March 29 and 30, April 6 and 7 and April 13 and 14. These times will be put in the schedule and be worked at the mid range negotiation meetings. A proposal has been sent to the projects and some blocks have been changed to try to accommodate project activities.
- ❑ Approved DSS-14 Grouting for week 25 in 2008 has been requested to move due to other requirements in that week.
- ❑ DSS-55 downtime for Paint Repair beginning in June 2008 for weeks 23 - 28.
- ❑ DSS-34 downtime for DSS-34 Azimuth Track Replacement in June of 2008 for week 25 – 28.
 - ❑ The request from Cassini has been denied.
- ❑ DSS-65 downtime for Life Extension Elevation for October, November of 2009 for weeks 45 - 48.
- ❑ DSS-25 downtime for Ka U/L install for April 2010 for 3 weeks is being moved and proposed for weeks 28 - 31. Requesting an additional week and will be proposed at the next RAR.
- ❑ CDSCC 26m antenna, DSS-46 will close as of August 1, 2009.

Antenna Downtime Status and Forecast

Downtime request for 2008

The following proposals for 14 hour complex downtimes are requested by GDSCC.

- ❑ Corrective maintenance “Apollo Tie-Line CB 22 Electrical Maintenance” in April.
 - ❑ This is in the schedule for week 16 DOY 108/0830-2230 and will be negotiated in the Mid-Range negotiation meetings.
- ❑ Corrective maintenance “G86/G81 Transfer Switch Electrical Maintenance” in May.
 - ❑ This is in the schedule for week 22 DOY 147/0830-2230 and will be negotiated in the Mid-Range negotiation meetings.
- ❑ Preventative maintenance “G91 2400V Switchgear Electrical Maintenance” in June.
 - ❑ This is in the schedule for week 24 DOY 164/0830-2230 and will be negotiated in the Mid-Range negotiation meetings.
- ❑ Preventative maintenance “Echo Tie-Line Electrical Maintenance” in September.
 - ❑ This will be proposed for week 38.
- ❑ Preventative maintenance “Apollo Tie-Line Electrical Maintenance” in October.
 - ❑ This will be proposed for week 42.
- ❑ Preventative maintenance “SPC-10 Electrical Maintenance” in November.
 - ❑ This will be proposed for week 46.

Antenna Downtime Status and Forecast

The following proposals for antenna downtimes are requested.

- ❑ CDSCC Annual Antenna Inspections including Annual Servo Testing at DSS-43, -45 and -34 in weeks 3 & 4 of 2008 not to be scheduled concurrently.
 - ❑ Antenna Inspection for DSS-34 is scheduled for DOY 20/2100-0500
 - ❑ Antenna Inspection for DSS-34 is scheduled for DOY 21/1100-2000
 - ❑ Antenna Inspection for DSS-43 is scheduled for DOY 21/2100-0500
 - ❑ Servo Testing for DSS-34 is scheduled for DOY 39/2035-0440
 - ❑ Servo Testing for DSS-43 is scheduled for DOY 41/2100-0500

- ❑ GDSCC Annual Antenna Inspections including Annual Servo Testing at DSS-14, -15, -24, -25, and -26 in weeks 15 & 16 of 2008 not to be scheduled concurrently.
 - ❑ Servo Testing for DSS-24 is scheduled for DOY 63/1600-0000
 - ❑ Servo Testing for DSS-15 is scheduled for DOY 64/1600-0000
 - ❑ Servo Testing for DSS-14 is scheduled for DOY 65/1600-0000
 - ❑ Servo Testing for DSS-25 is scheduled for DOY 66/1600-0000
 - ❑ Servo Testing for DSS-26 is scheduled for DOY 67/1600-0000

- ❑ MDSCC Annual Antenna Inspections including Annual Servo Testing at DSS-63, -65, -54 and -55 in weeks 23 & 24 of 2008 not to be scheduled concurrently.
 - ❑ Servo Testing for DSS-54 is scheduled for DOY 131/1600-0000
 - ❑ Servo Testing for DSS-65 is scheduled for DOY 136/0130-0930
 - ❑ Servo Testing for DSS-63 is scheduled for DOY 137/2040-0440
 - ❑ Servo Testing for DSS-55 is scheduled for DOY 138/0735-1535
 - ❑ Antenna Inspection for DSS-63 is scheduled for DOY 154/0600-1400
 - ❑ Antenna Inspection for DSS-55 is scheduled for DOY 161/0600-1400
 - ❑ Antenna Inspection for DSS-54 is scheduled for DOY 162/0600-1400
 - ❑ Antenna Inspection for DSS-54 is scheduled for DOY 163/0520-1320

- ❑ HEF Transmitter Manifold Installation at DSS-15, -45 and -65 between July, 2008 and June 2009 not to be scheduled concurrently with DSS-15 being scheduled first.

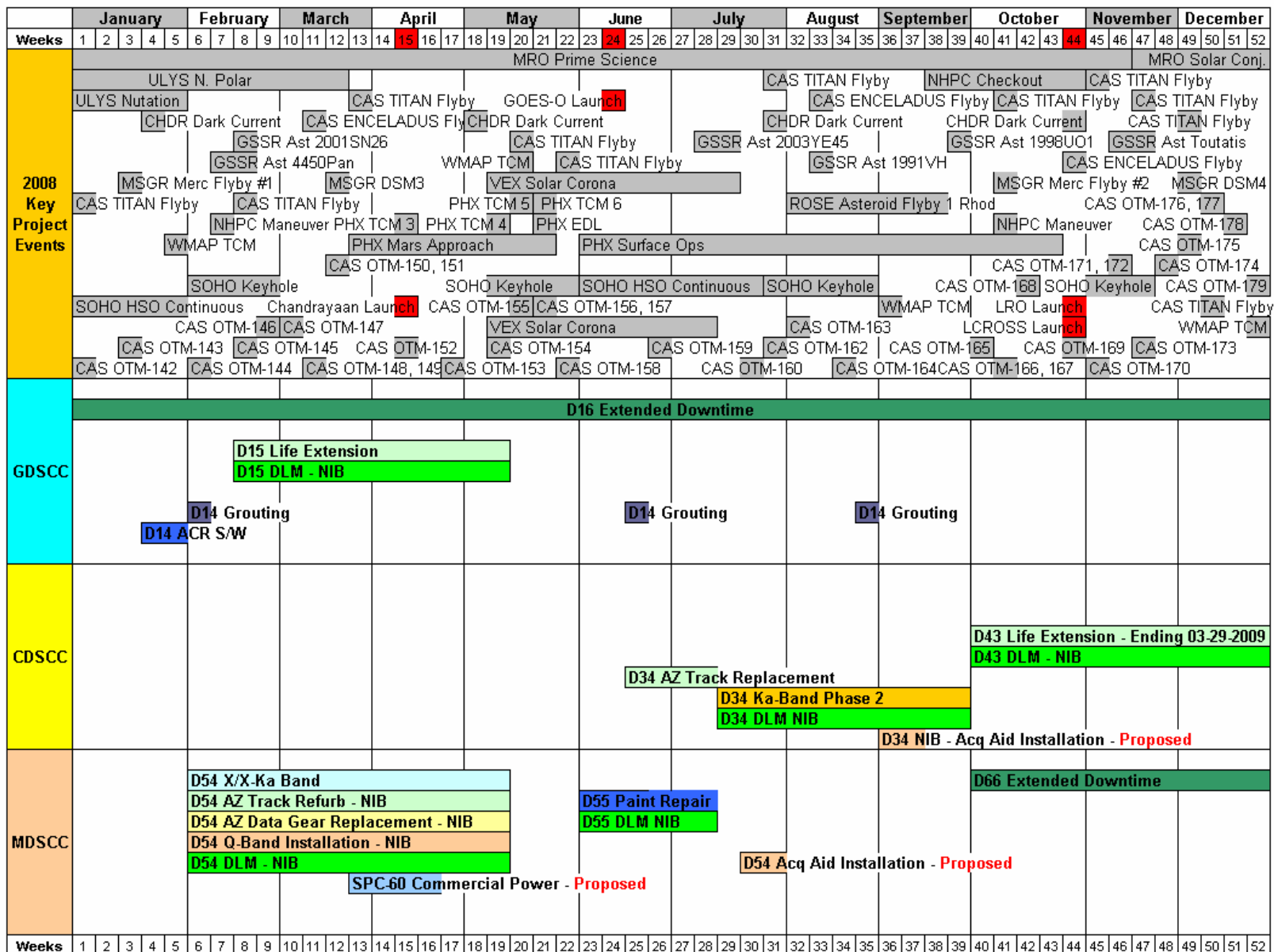
Antenna Downtime Status and Forecast

Changes to 2007 - 2008 Downtime Schedule

All conflicts have been resolved and supports have been completed or scheduled or cancelled.

- ❑ 13-hour complex-wide downtime for SPC-10 Electrical Maintenance is scheduled for DOY 341/2115 – 342/1015. This was cancelled due to GOES spacecraft emergency and will be rescheduled. There is a proposal out for week 8 of 2008.
- ❑ Downtime for DSS-43 for Rescue Platform Install is scheduled for DOY 336/2100 – 339/2100.
- ❑ Downtime for Grouting is scheduled for DOY 340/1600 – DOY 346/0000.
- ❑ ACR S/W install is in the schedule for DOY 25/0000 – DOY 34/0000 weeks 4 & 5 of 2008.
- ❑ Downtime for 4 day Grouting is scheduled for DOY 35 – 38 in week 6 of 2008.

Antenna Downtime Status and Forecast 2008



Antenna Downtime Status and Forecast 2010

	January				February				March				April				May				June				July				August				September				October				November				December							
Weeks	1	2	3	4	5	6	7	8	9	10	11	12	13	14	15	16	17	18	19	20	21	22	23	24	25	26	27	28	29	30	31	32	33	34	35	36	37	38	39	40	41	42	43	44	45	46	47	48	49	50	51	52
2010 Key Project Events	CAS Tour																	GSSR Ast 1998U01				GSSR Mercury												GSSR Ast 1998U01				GSSR Mercury														
	GSSR Mars								CHDR Dark Current				GSSR Mercury				GSSR Ast 1999 MN				CHDR Dark Current								GSSR Ast 2003 UV11				GSSR Ast 2002 VE68																			
					EGS Global VLBI				EGS EVN J-M5								GSSR Mercury				EGS Global VLBI								EGS Global VLBI				EGS EVN J-M5																			
									KEPL Qtrly. Roll												KEPL Qtrly. Roll								KEPL Qtrly. Roll																							
	MRO Relay																	MRO MSL Support																																		
	M010 THEMIS																																																			
	MRO X/Ka DDOR				MRO X/Ka DDOR				MRO X/Ka DDOR				MSL Approach				MSL Surface Ops																																			
	SOHO Keyhole								SOHO Keyh				MSL TCM				MSL TCM				MSL EDL				NHPC TCM				NHPC DDOR				NHPC TCM																			
	Wind TCM								Wind TCM								ROSE Asteroid Flyby				Wind TCM				NHPC Checkout				Wind TCM				ROSE DSM-2																			
	GDSCC																		D16 Extended Downtime																																	
D14 Life Extension - Beginning 09-28-2009																																																				
NIB - D14 DLM																	D25 Ka U/L				NIB - D25 DLM				D25 Ka U/L - Proposed Move				NIB - D25 DLM - Proposed Move																							
CDSCC																		D46 Extended Downtime																																		
MDSCC																		D66 Extended Downtime																																		
																		D54 Ka-Band Phase 2																																		

Revised: January 7, 2008

Antenna Downtime Status and Forecast

DSN Resource Implementation Planning Matrix by Subnet

Complex	Station	Subnet	S-Band		X-Band		Ka-Band		Ka Phase 2
			Down	Up	Down	Up	Down	Up	
10	DSS-16	26M	✓	✓	N/A	N/A	N/A	N/A	N/A
40	DSS-46	26M	✓	✓	N/A	N/A	N/A	N/A	N/A
60	DSS-66	26M	✓	✓	N/A	N/A	N/A	N/A	N/A
10	DSS-27	34HSB	✓	✓	N/A	N/A	N/A	N/A	N/A
10	DSS-24	34B1	✓	✓	✓	✓	N/A	N/A	09/21/09
40	DSS-34	34B1	✓	✓	✓	✓	✓	N/A	09/29/08
60	DSS-54	34B1	✓	✓	✓	✓	04/15/08	N/A	09/27/10
10	DSS-25	34B2	N/A	N/A	✓	✓	✓	08/01/10	N/A
10	DSS-26	34B2	N/A	N/A	✓	✓	✓	N/A	N/A
60	DSS-55	34B2	N/A	N/A	✓	✓	✓	N/A	N/A
10	DSS-15	34HEF	✓	N/A	✓	✓	N/A	N/A	N/A
40	DSS-45	34HEF	✓	TBD	✓	✓	N/A	N/A	N/A
60	DSS-65	34HEF	✓	TBD	✓	✓	N/A	N/A	N/A
10	DSS-14	70M	✓	✓	✓	✓	N/A	N/A	N/A
40	DSS-43	70M	✓	✓	✓	✓	N/A	N/A	N/A
60	DSS-63	70M	✓	✓	✓	✓	N/A	N/A	N/A

N/A = Capability Not Planned xx/xx/xx = Capability Date Recently Changed

As of: 12/04/07

✓✓✓ = Capability Recently Exists

✓ = Capability Exists