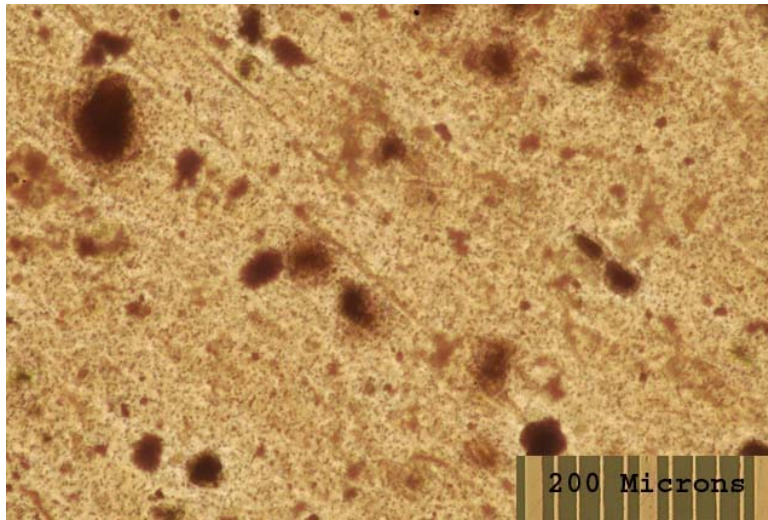
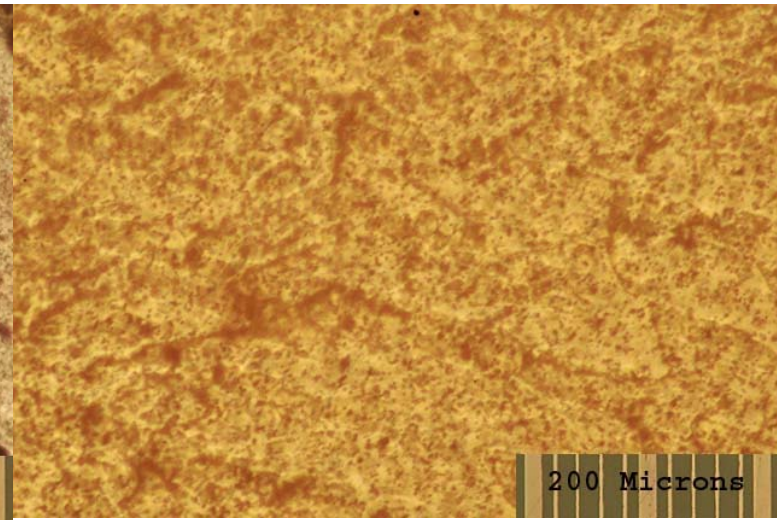
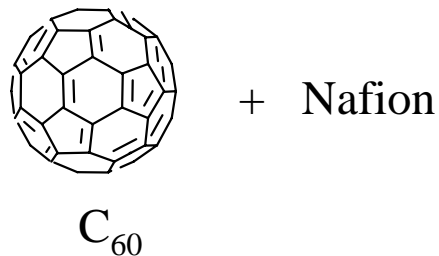


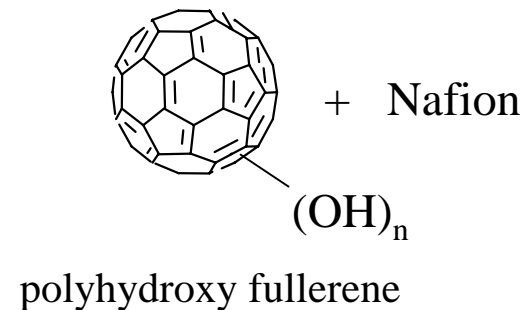
Morphology of Fullerene–Nafion Composite Recast Membranes



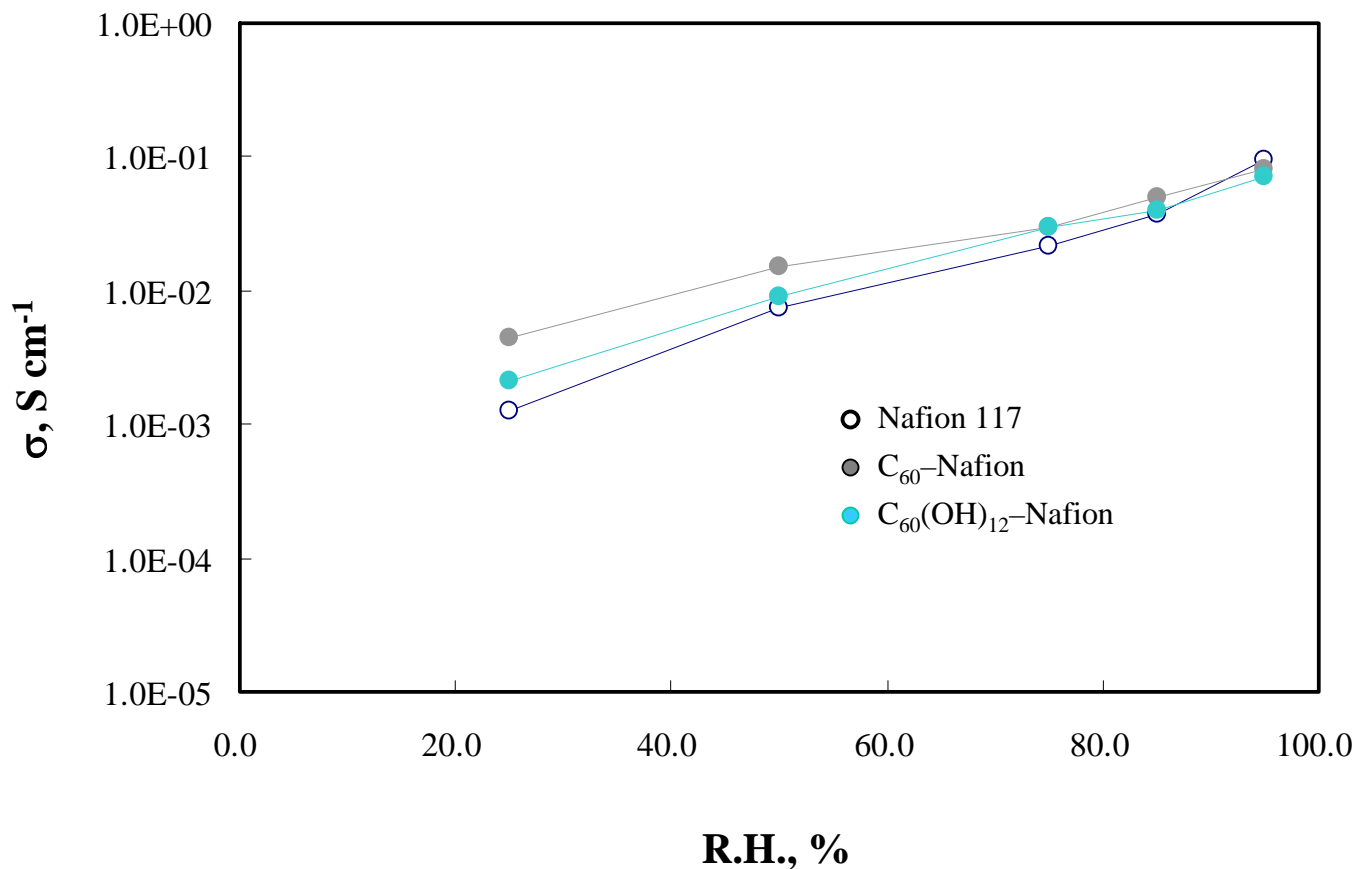
1 wt% C₆₀-Nafion Composite



1 wt% C₆₀(OH)_n-Nafion Composite



Fullerene-Nafion Composite Recast Membranes

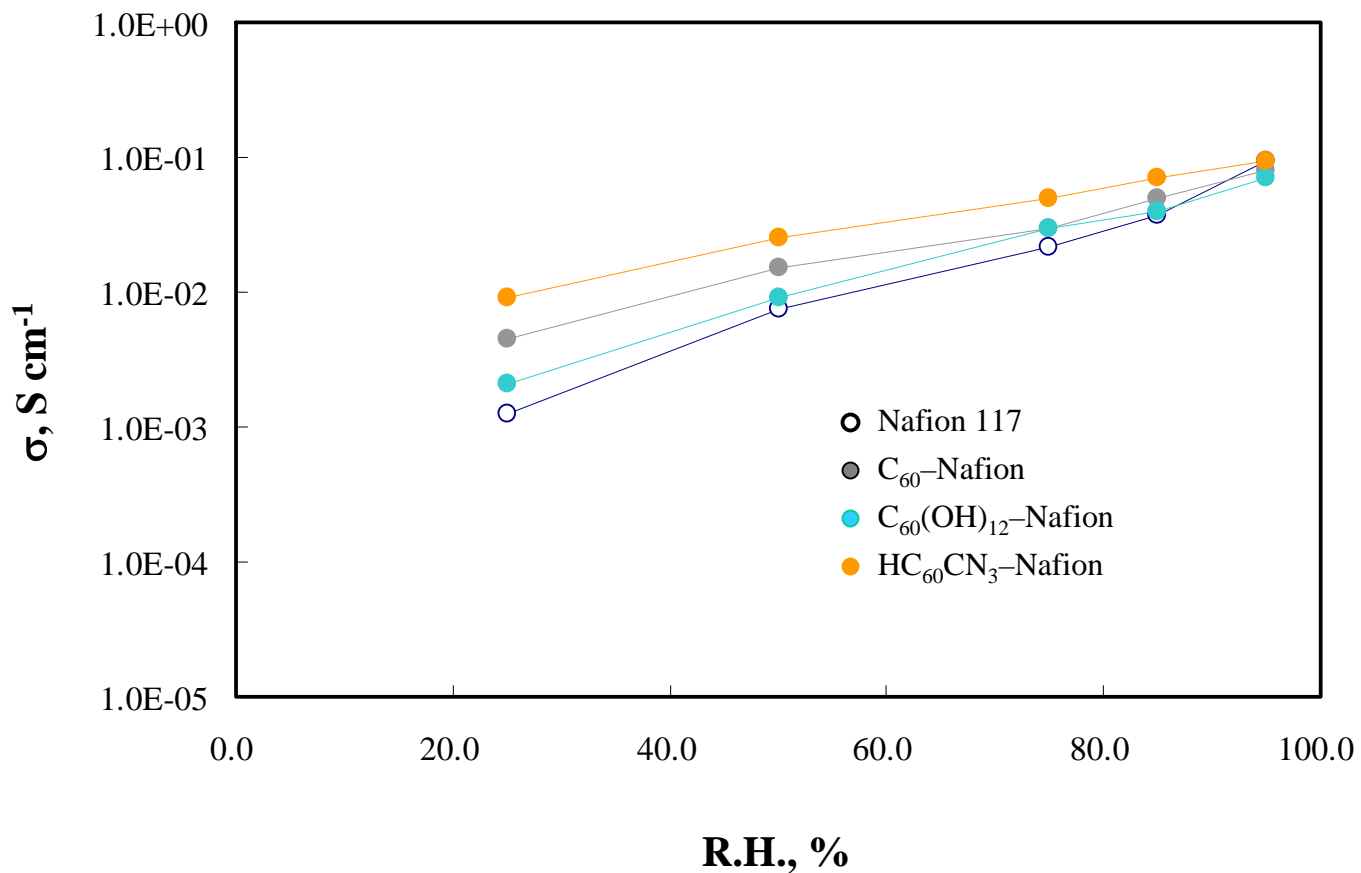


under N₂ gas flow

T = 30 °C

Proton Conductivity

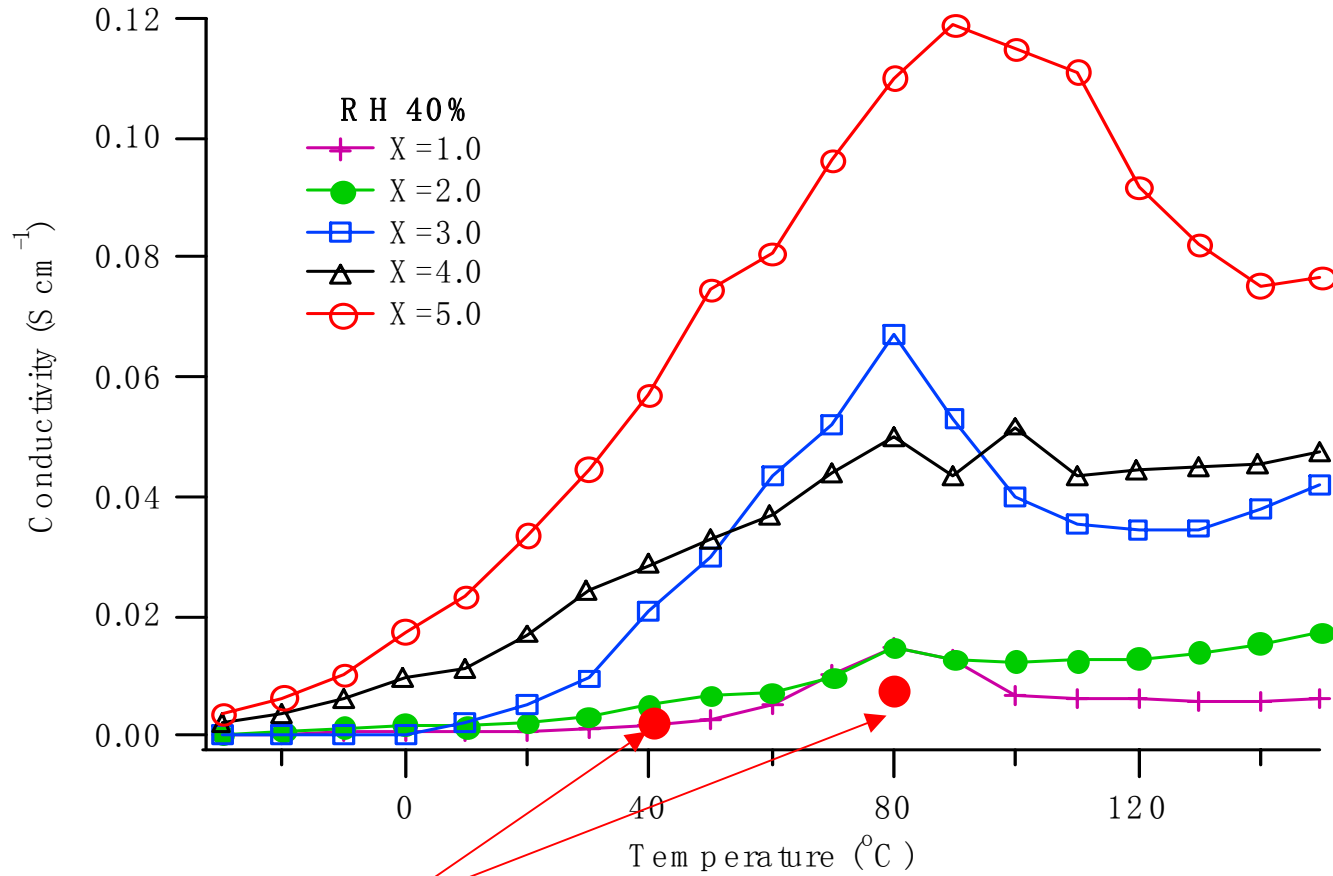
Fullerene–Nafion Recast Composites



Under N₂ gas flow

T = 30 °C

Performance of New Organic-Inorganic Hybrid Membrane



Nafion

Take Home Lessons

- The factors determining the performance of fullerene composite membranes:
 - the fullerene functionality
 - the host polymer
 - the dispersion of the fullerene
 - the location of the fullerene in the polymer
 -
 -
 -