



### Monticello RMP and Moab RMP

Welcome to BLM's Resource Management Plan (RMP) public scoping for the Wild and Scenic River eligibility process within the Moab and Monticello Field Offices. We invite your participation, comments, and input to the eligibility phase of river and stream evaluation.

The Wild and Scenic Rivers Act of 1968 is designed to preserve free-flowing rivers with special values in their natural condition for the use and enjoyment of the public, balancing the nation's water resource development policies with river conservation and recreation goals.

The Act states, "In all planning for the use and development of water and related land resources, consideration shall be given by all federal agencies involved to potential national wild, scenic and recreational river areas..." As part of the revision of the current Moab and Monticello Resource Management Plan each field office is conducting an inventory of rivers and streams within their respective resource areas.

In order to be eligible for inclusion into the National Wild and Scenic Rivers System, the Act specifies that rivers must:

- be "free-flowing",
- and exhibit one or more outstandingly remarkable value (ORV). These are scenic, recreation, fish, wildlife, geologic, historic, cultural, and ecological. These ORVs must be at least regionally significant.

In the review process, eligible rivers are given a "tentative classification". The Wild and Scenic Rivers Act provides three possible classifications:

- **Wild** – A *wild* river is free of impoundments, with shorelines or watersheds essentially primitive, and with unpolluted waters
- **Scenic** - A *scenic* river may have some development, and may be accessible in places by roads.
- **Recreational** - A *recreational* river may be accessible by paved road or railroad, may have extensive development along its shoreline, and may have undergone some impoundment or diversion in the past.

Each classification also prescribes the management activities that would be allowed to occur along a river. A final classification is determined if and when a river is designated by Congress.

The Monticello and Moab Field Offices have completed a preliminary review of 167 and 248 river and stream segments, respectively. BLM's preliminary findings show Monticello Field Office with 16 segments on 13 rivers/streams, and Moab Field Office with 44 segments on 18 rivers/streams, as shown on attached maps and Tables 1 and 2.

Before making a final determination of eligible rivers, the Monticello and Moab Field Offices are requesting any information you might have to offer on the free-flowing nature of the field offices' rivers, and comments on

the outstandingly remarkable values as listed in the attached tables, or suggestions for consideration of other river/segments.

Rivers segments determined to be eligible during this initial step of the study process will be analyzed in the Draft RMP/Environmental Impact Statement. The second phase, suitability, is a study of management alternatives. Suitability will consider such things as ownership, manageability, costs, and water needs.

Thank you for your participation in the eligibility process. If you have questions or would like additional information on these wild and scenic river inventories, please contact the respective office listed below. Comments are due by December 30, 2003.

### **Commonly Asked Questions about Wild and Scenic Rivers**

#### **Will my access to the river be limited?**

Recreation on the river, including activities such as fishing and boating, are some of the major uses Wild and Scenic designation seeks to protect; public access to the river for these and other uses will not be hindered.

#### **Will my ability to enjoy public lands along the river be limited?**

Recreational use of the public lands adjacent to a wild and scenic river will continue as before. Hunting, camping, and other land uses will continue to be regulated under existing state laws or rules of the managing agency (NPS, BLM, FS).

#### **Will my rights as a private landowner disappear with wild and scenic river designation?**

The Wild and Scenic River Act carries no authority to control use of privately owned land, even if private lands are included within the boundaries of the protected river. Landowners will be allowed to use their land just as they had before designation. If a proposed use of private land is in conflict with the management of the wild and scenic river, the managing agency will work with the landowner to mitigate any potential threat to the values of the river.

#### **Will current land uses be stopped along a newly designated wild and scenic river?**

Most current land uses, public and private, alongside the river will continue after designation; this includes agricultural uses such as farming and grazing. The goal of the Wild and Scenic Rivers Act is not to revert these areas to their original pristine and untouched condition, but rather to "protect and enhance" the existing values and uses of the river and surrounding lands. Only those land and water uses that threaten the values for which the river is protected will be examined for possible regulation.

#### **Will Wild and Scenic river designation automatically increase the number of tourists coming to the river area?**

In many cases, visitation has increased only slightly or not at all with designation. It is up to the local community to choose whether or not to promote the river as a tourist destination. Some communities seize the opportunity to develop tourism. Other communities have chosen not to promote their wild and scenic river, and have seen no significant increase in the number of tourists coming to their region.

#### **Is there opportunity for citizen input and comment in the study or management of a wild and scenic river?**

There is ample opportunity for public input at many stages of the evaluation process including this first phase, determination of eligibility of river/segments. The BLM field offices invite your comments and opinions at this time.

Following the final determination of those watercourses found to be eligible, the second phase, a suitability study, will welcome further comments and ideas from the public. This will occur in the format of the Draft Environmental Impact Statement document for the Moab and Monticello Field Offices, tentatively scheduled to be available for review in 2005.

**Sources:** Interagency Wild and Scenic Rivers Coordinating Council; Wild and Scenic Rivers Reference Guide, revised March 2000.  
[www.americanrivers@americanrivers.org/wildscenic/misconceptions.htm](http://www.americanrivers@americanrivers.org/wildscenic/misconceptions.htm)

BLM Moab Field Office  
Attn: Wild and Scenic Rivers  
82 East Dogwood  
Moab, UT 84532  
[www.moabrmp.com](http://www.moabrmp.com)

BLM Monticello Field Office  
Attn: Wild and Scenic Rivers  
435 North Main Street  
Monticello, UT 84535  
[www.monticellormp.com](http://www.monticellormp.com)

**Table 1 - BLM Monticello Field Office, Preliminary Determination - Eligible Wild and Scenic River(s)/Segments**

<b>River/Segment Name</b>	<b>Segment Description and Length in River Miles</b>	<b>Outstandingly Remarkable Values ( ORVs)</b>	<b>Tentative Classification</b>
Colorado River	State lands near River Mile 44 to Canyonlands NP near River Mile 31 <b>13 miles</b>	Fish, Recreation, Wildlife, Cultural, Ecological	Wild
White Canyon	Forest Boundary to Glen Canyon Nat'l Rec Area. Passes through Natural Bridges NM. <b>30 miles</b>	Scenic, Recreation	Scenic
Indian Creek	Forest boundary to Donnelly Canyon <b>5 miles</b>	Cultural	Recreational
Fable Valley	Source to mouth <b>11 miles</b>	Wildlife	Wild
Dark Canyon	Forest boundary to Glen Canyon NRS <b>13 miles</b>	Scenic, Recreation, Wildlife	Wild
San Juan River	W. Montezuma Creek to River Mile 9 <b>24 miles</b>	Fish, Recreation, Wildlife, Historic, Cultural	Recreational
San Juan River	River Mile 9 to River Mile 23 above Mexican Hat formation <b>14 miles</b>	Scenic, Fish, Recreation, Geology, Wildlife	Wild
San Juan River	River Mile 23 to River Mile 28 <b>5 miles</b>	Scenic, Fish, Recreation, Wildlife	Recreational
San Juan River	Mile 28 to Glen Canyon NRA River mile 45 <b>17 miles</b>	Scenic, Fish, Recreation, Geologic, Wildlife	Wild
Grand Gulch	Gulch and Tributaries inside Instant Study Area <b>52 miles</b>	Scenic, Recreation, Wildlife, Historic, Cultural	Wild
Slickhorn	Source to Glen Canyon NRA <b>8 miles</b>	Scenic, Recreation, Wildlife, Cultural	Wild
Lime Creek- East & West Forks	Sources East & West forks to confluence with main stream to mouth. <b>31 miles</b>	Recreation, Cultural	Scenic
Comb Wash	Source to mouth <b>24 miles</b>	Cultural	Recreational
Mule Canyon	North & south forks to east of County Rd 263 & State 95 <b>10 miles</b>	Recreation, Cultural	Recreational
Arch Canyon	Forest boundary to mouth <b>8 miles</b>	Fish, Recreation, Wildlife, Cultural, Ecological	Recreational
Fish, Owl, McLeod Creeks	Source to mouths <b>30 miles</b>	Scenic, Recreation, Wildlife, Cultural	Wild

**Table 2: BLM Moab Field Office – Preliminary Determination – Eligible Wild and Scenic River(s)/Segments**

River/Segment Name	Segment Description and Length in River Miles	Outstandingly Remarkable Value(s)	Tentative Classification
<b>Colorado River</b>	(1) Colorado/Utah Stateline to Westwater Canyon <b>1 mile</b> (2) Westwater Canyon to Rose Ranch <b>13 miles</b> (3) Rose Ranch to Cisco Wash <b>10 miles</b> (4) Cisco Wash to confluence with the Dolores River <b>2 miles</b> (5) Confluence with the Dolores River to private property near Potash Plant <b>36 miles</b> (6) Private Property near Potash Plant to Canyonlands National Park <b>9.5 miles</b>	Scenery, recreation, wildlife, fish, cultural, ecological Scenery, recreation, wildlife, fish, cultural, geology, ecological Recreation, wildlife, fish, cultural, geology, ecological Recreation, wildlife, fish, cultural, ecological Scenery, recreation, wildlife, fish, cultural, geology, ecological Scenery, recreation, wildlife, fish, cultural, geology, ecological	Scenic Wild  Scenic Recreational Recreational  Wild
<b>Cottonwood Wash (Upper)</b>	(1) Source near Cottonwood Point to Private land boundary including Bear, & Canyon next to Bear. <b>16.3 miles</b> (2) All of Bull, Horse, Upper/Lower Twin, Spruce, Tepee, & Cherry Canyons <b>24.5 miles</b>	Scenery, wildlife, ecological  Scenery, wildlife, ecological	Scenic  Wild
<b>Diamond Canyon &amp; tributaries</b>	(1) Source near Diamond Ridge to Halfway Canyon <b>21.3 miles</b> (2) Halfway Canyon to private ranch <b>11.4 miles</b>	Scenery, wildlife, ecological Wildlife, ecological	Scenic Recreational
<b>Nash Wash (Upper)</b> Excluding Bull Canyon	(1) Source of 3 left hand tributaries to Nash Wash, and the first 2 ½ miles from the source of Nash Wash <b>13 miles</b> (2) Two and one-half miles below source of Nash Wash to Cunningham Ranch <b>5.6 miles</b>	Scenery, wildlife, ecological  Scenery, wildlife, ecological	Wild  Scenic
<b>Onion Creek</b>	(1) Source to Onion Creek road <b>3 miles</b> (2) Beginning of Onion Creek road to Colorado River <b>7.6 miles</b>	Scenery, geology, ecological Scenery, recreation, geology	Wild Recreational
<b>Professor Creek (Mary Jane Canyon)</b>	Forest Service and State land boundary to Diversion near private land <b>6.6 miles</b>	Scenic, recreation	Wild
<b>Negro Bill Canyon</b>	(1) Source to ¼ mile from Colorado River <b>9 miles</b> (2) ¼ mile to Colorado River <b>.3 miles</b>	Scenery, recreation, ecological Scenery, recreation, ecological	Wild Recreational
<b>Mill Creek (Upper)</b> (Middle) (Lower)	(1) Norman private property to diversion <b>4 miles</b> (2) Hidden Valley to Power Dam <b>4.5 miles</b> (3) Power Dam to private land <b>.3 miles</b>	Scenery, recreation, fish, cultural, ecological Scenery, recreation, fish, cultural, ecological Fish, cultural, ecological	Recreational Scenic Recreational
<b>North Fork Mill Creek</b> <b>Rill Creek</b> <b>Burkholder Draw</b>	(1) Forest boundary near Wilson Mesa to Mill Creek <b>10.8 miles</b> (2) Source to North Fork of Mill Creek <b>4.5 miles</b> (3) Forest boundary to Rill Creek <b>4.4 miles</b>	Scenery, recreation, cultural, ecological  Recreation, ecological Scenery, recreation, ecological	Wild  Wild Wild
<b>Kane Springs (Upper)</b> (Lower)	(1) Muleshoe Canyon to Trough Springs <b>8.3 miles</b> (2) State land boundary to Colorado River <b>4.4 miles</b>	Scenery, geology, ecological Scenery, recreation, cultural, geology, ecological	Recreational Recreational
<b>Hunters Canyon (Upper)</b> (Lower)	(1) Last 3 mi. to Kane Springs Canyon excl. campground <b>3.3 miles</b> (2) Hunters Canyon Campground <b>.2 miles</b>	Scenery, ecological Scenery, ecological	Wild Recreational

<b>River/Segment Name</b>	<b>Segment Description and Length in River Miles</b>	<b>Outstandingly Remarkable Value(s)</b>	<b>Tentative Classification</b>
<b>Hatch Wash</b>	(1) Three Mile Canyon to Kane Springs <b>8.8 miles</b>	Scenery, recreation, geology, ecological	Wild
<b>West Coyote Creek</b>	(2) Moab/Monticello Field Office boundary to Three Mile <b>12.6 miles</b> First 1 ½ miles from Hatch Wash <b>1.5 miles</b>	Ecological Scenery	Recreational Wild
<b>Dolores River</b>	(1) Colorado-Utah Stateline to Fisher Creek <b>5.6 miles</b> (2) Fisher Creek to Bridge Canyon <b>5.9 miles</b> (3) Bridge Canyon to Colorado River <b>11.3 miles</b>	Scenery, recreation, wildlife, fish, geology, ecological Scenery, recreation, wildlife, fish, geology, ecological Recreation, wildlife, fish, geology, ecological	Scenic Wild Scenic
<b>Beaver Creek</b>	(1) F.S. boundary to one mile from the Dolores River <b>6.6 miles</b> (2) First mile from the Dolores River <b>1 mile</b>	Scenery, recreation, fish, geology, ecological Scenery, recreation, geology	Wild Scenic
<b>Fisher Creek &amp; Thompson Canyon</b>	(1) Source of Thompson & Private land boundary of Fisher to ¼ mile from Dolores River <b>12.8 miles</b> (2) First ¼ mile from Dolores River <b>.3 miles</b>	Scenery, ecological Scenery, ecological	Wild Scenic
<b>Granite Creek</b>	(1) Colorado-Utah Stateline to the historic ranch <b>1.4 miles</b> (2) Historic ranch to .3 miles to the Dolores River <b>8.3 miles</b> (3) The first .3 mile from the Dolores River <b>.3 miles</b>	Scenery, geology, ecological Geology, ecological Geology, ecological	Scenic Wild Scenic
<b>Green River Tributaries</b>			
<b>Rattlesnake Canyon &amp; Tributaries</b>	Source to Green River <b>52.25 miles</b>	Scenery, wildlife, geology, ecological	Wild
<b>Ten Mile Canyon &amp; tributaries</b>	Dripping Springs to the Green River. <b>17.8 miles</b>	Scenery, recreation, cultural, ecological	Recreational
<b>Spring Canyon</b>	(1) Source to a point 2 miles from the Green River <b>4.2 miles</b> (2) First 2 miles from the Green River <b>2 miles</b>	Scenery, recreation, wildlife, geology, ecological Scenery, recreation, wildlife, geology, ecological	Wild Recreational



# Potentially Eligible Segments for Wild and Scenic Rivers in the Moab Field Office

4350000

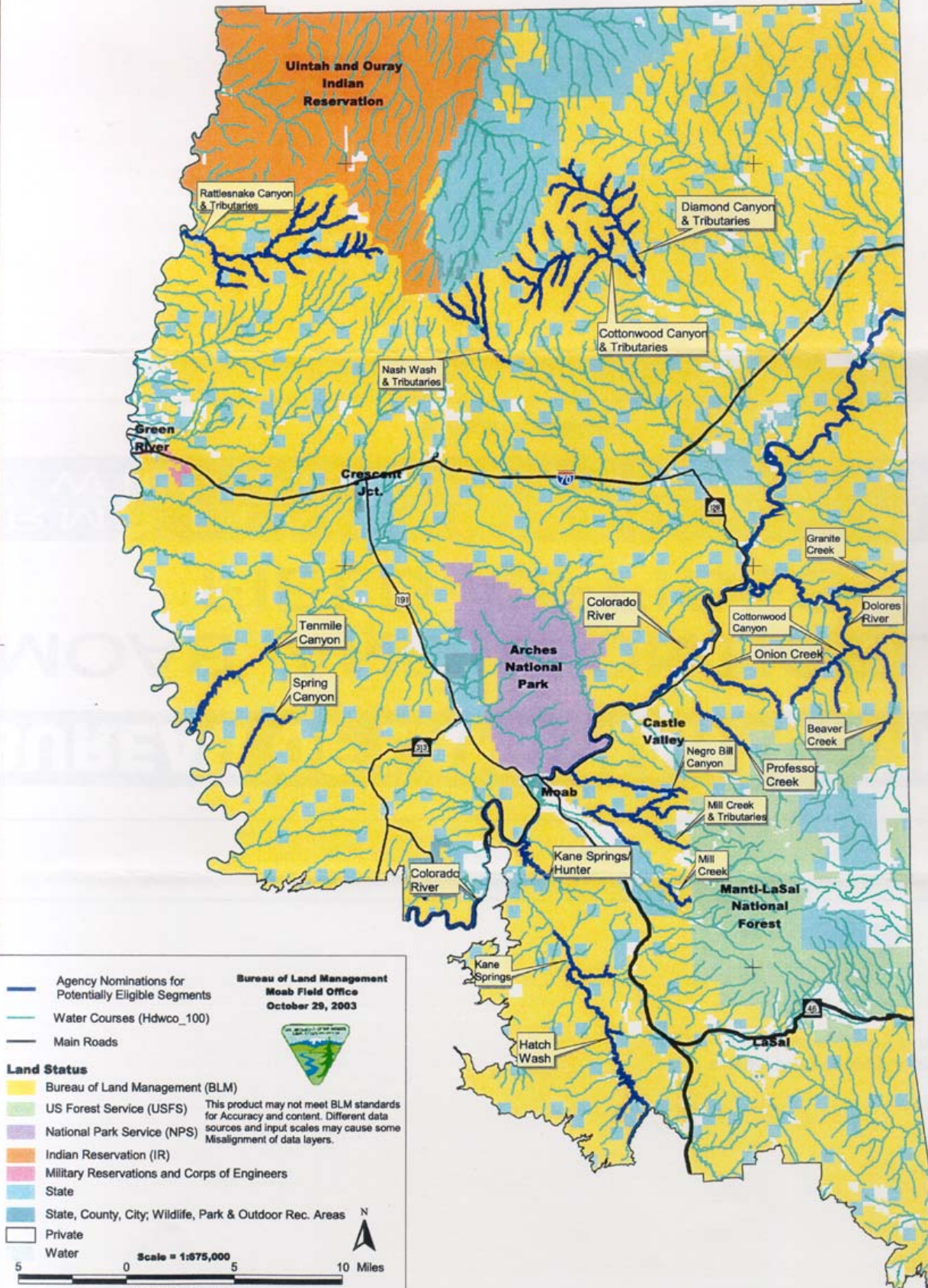
4300000

4250000


4350000

4300000

4250000



**Bureau of Land Management  
Moab Field Office  
October 29, 2003**



This product may not meet BLM standards for Accuracy and content. Different data sources and input scales may cause some Misalignment of data layers.

**Legend:**

- Agency Nominations for Potentially Eligible Segments (Yellow line)
- Water Courses (Hdwco\_100) (Blue line)
- Main Roads (Black line)

**Land Status**

- Bureau of Land Management (BLM) (Yellow)
- US Forest Service (USFS) (Green)
- National Park Service (NPS) (Purple)
- Indian Reservation (IR) (Orange)
- Military Reservations and Corps of Engineers (Pink)
- State (Light Blue)
- State, County, City, Wildlife, Park & Outdoor Rec. Areas (Dark Blue)
- Private (White)
- Water (Blue)

Scale = 1:675,000

Grid: 50,000 meter  
UTM Zone 12 NAD 27

600000

650000



450000

500000

550000

600000

650000

# Potentially Eligible Segments for Wild and Scenic Rivers in the Monticello Field Office

4250000

Agency Nominations for Potentially Eligible Sections

Water Courses (Hdwco\_100)

State Highways



Bureau of Land Management  
Monticello Field Office  
435 N. Main  
Monticello, UT 84535  
October 28, 2003

This product may not meet BLM standards for accuracy and content. Different data sources and input scales may cause some misalignment of data layers.

### Land Status

Bureau of Land Management (BLM)

US Forest Service (USFS)

USFS Wilderness Area

National Park Service (NPS)

Indian Reservation (IR)

State

Private



5 0 5 10 Miles

UTM Zone 12 NAD 27

4200000

4150000

4100000

450000

500000

550000

600000

650000

4250000

4200000

4150000

4100000

Colorado River

Indian Creek

Monticello

Fable Valley

White Canyon

Dark Canyon

Mule Canyon

Blanding

Arch Canyon

Fish, Owl, and McLeod Canyons

Comb Wash

Grand Gulch

Slickhorn Canyon

Lime Creek Canyon

San Juan River