

Baltimore Harbor Anchorages and Channels, Maryland and Virginia. Integrated Feasibility Report and Environmental Impact Statement. U.S. Army Corps of Engineers, Baltimore District. March 1997.
 (Samples used for comparison at red arrow)

SL 1

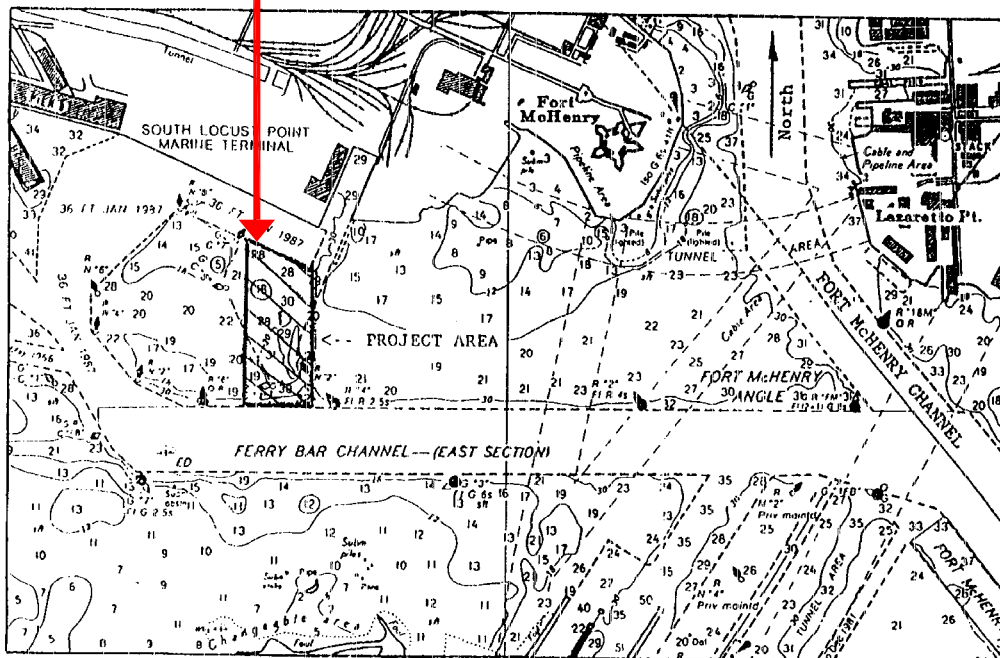


Figure 2. Location of project area near South Locust Point

G:\PROJECTS\32907\251-325 SURVEYS & INVESTIGATIONS\260_GEO TECHNICAL INVENV_ANALYTICAL_DATA\BACKGROUND LOCATIONS FIGURES\BACKGROUND LOCATIONS FIGURES FOR RR-01\SEPT06.DWG



AES SPARROWS POINT LNG, LLC
 SPARROWS POINT, MD

HISTORIC BACKGROUND
 SEDIMENT SAMPLING LOCATIONS

Prepared By:
 Haley & Aldrich

SCALE: NONE
 JANUARY 2007

FIGURE 2.4-3 Sheet 4 of 5