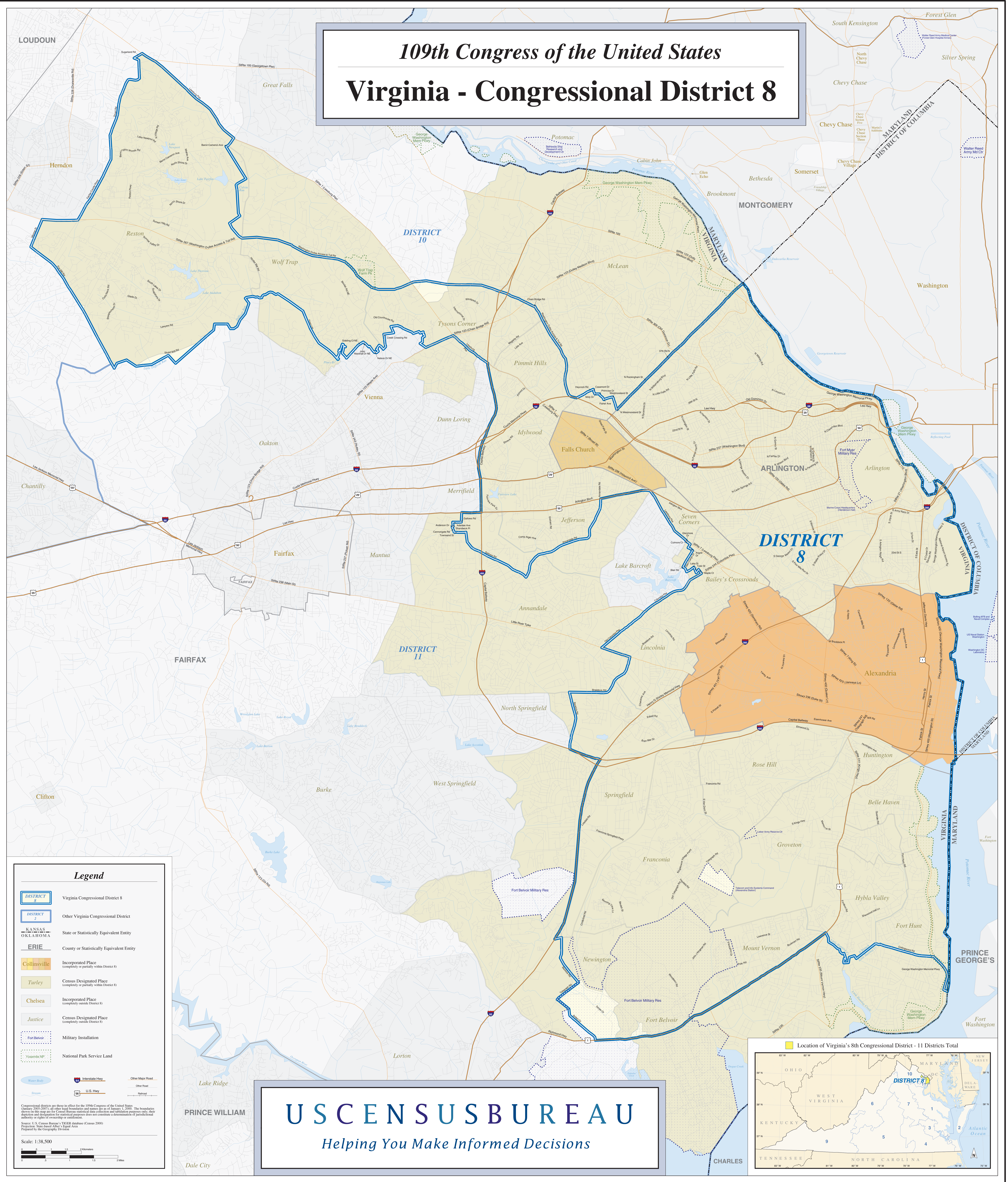


109th Congress of the United States

Virginia - Congressional District 8



Legend

- DISTRICT 8 Virginia Congressional District 8
- DISTRICT 2 Other Virginia Congressional District
- KANSAS OKLAHOMA State or Statistically Equivalent Entity
- ERIE County or Statistically Equivalent Entity
- Collinsville Incorporated Place (completely or partially within District 8)
- Turley Census Designated Place (completely or partially within District 8)
- Chelsea Incorporated Place (completely outside District 8)
- Justice Census Designated Place (completely outside District 8)
- Fort Belvoir Military Installation
- Yosemite NP National Park Service Land
- Water Body
- Interstate Hwy
- U.S. Hwy
- Other Major Road
- Other Road
- Railroad

Congressional districts are those in effect for the 109th Congress of the United States (January 2005-2007); all other legal boundaries and names are as of January 1, 2000. The boundaries shown on this map are for Census Bureau statistical data collection and tabulation purposes only. They do not constitute a determination of jurisdictional authority or rights of ownership or entitlement.

Source: U.S. Census Bureau's TIGER database (Census 2000) Products, State-based Urban-Urban Area Prepared by the Geography Division

Scale: 1:38,500

US CENSUS BUREAU
Helping You Make Informed Decisions

