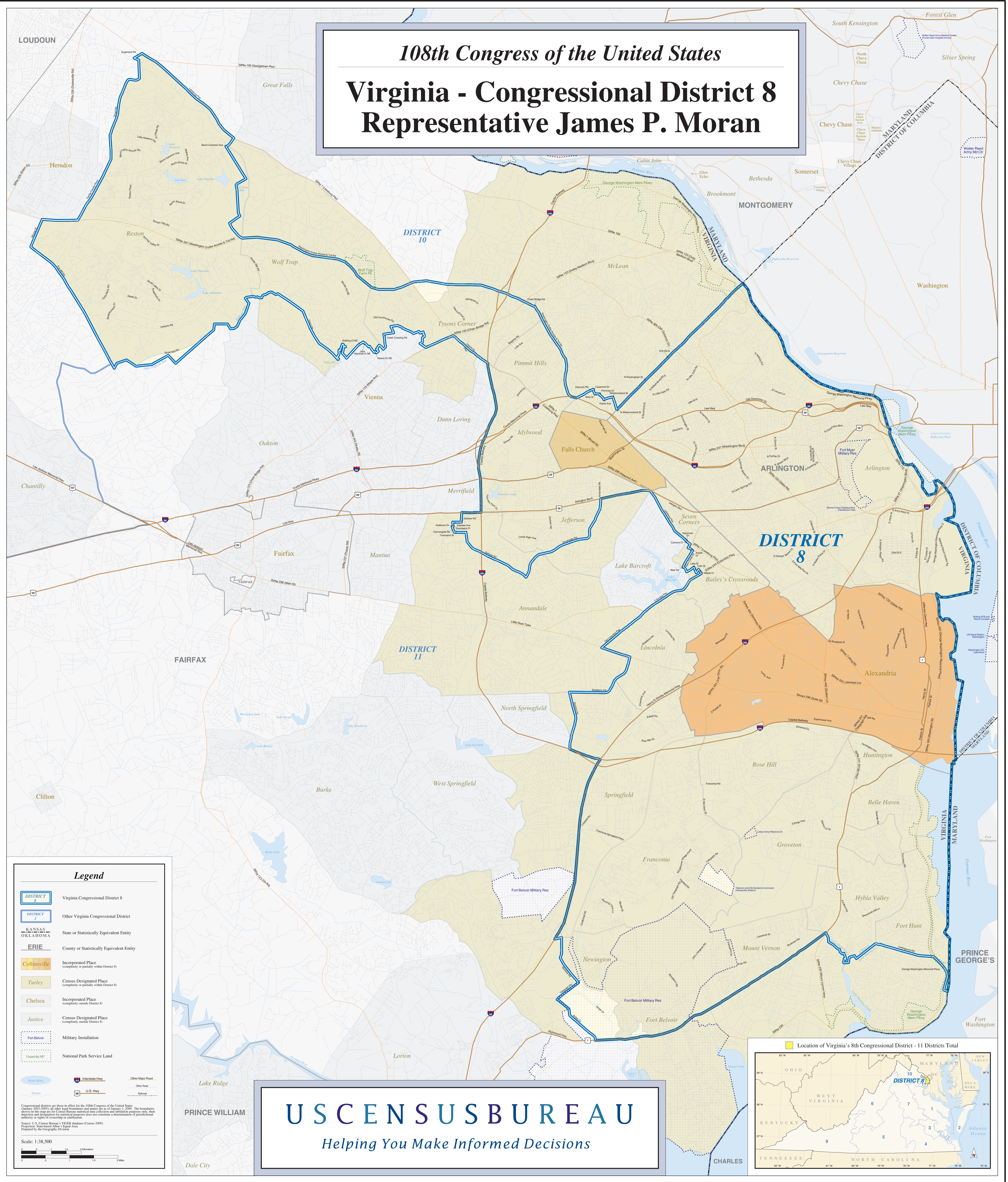


108th Congress of the United States

Virginia - Congressional District 8

Representative James P. Moran



Legend

- DISTRICT 8** (Blue outline): Virginia Congressional District 8
- DISTRICT 2** (Light blue outline): Other Virginia Congressional District
- KANSAS OKLAHOMA** (Light blue): State or Statistically Equivalent Entity
- ERIE** (Light blue): County or Statistically Equivalent Entity
- Collinsville** (Orange): Incorporated Place (completely or partially within District 8)
- Turley** (Light orange): Census Designated Place (completely or partially within District 8)
- Chelsea** (Light orange): Incorporated Place (completely outside District 8)
- Justice** (Light orange): Census Designated Place (completely outside District 8)
- Fort Belvoir** (Blue hatched): Military Installation
- Yosemite NP** (Green hatched): National Park Service Land
- Water Body** (Blue): Water Body
- Stream** (Blue line): Stream
- Interstate Hwy** (Red/Blue line): Interstate Highway
- U.S. Hwy** (Red line): U.S. Highway
- Other Major Road** (Orange line): Other Major Road
- Other Road** (Grey line): Other Road
- Railroad** (Black line): Railroad

Congressional districts are those in effect for the 108th Congress of the United States (January 2003-2009); all other legal boundaries and names are as of January 1, 2000. The boundaries shown on this map are for Census Bureau statistical data collection and tabulation purposes only. They do not constitute a determination of jurisdictional authority or rights of ownership or control.

Source: U.S. Census Bureau's TIGER database (Census 2000) Products, State-based Urban Legal Area Prepared by the Geography Division

Scale: 1:38,500

US CENSUS BUREAU
Helping You Make Informed Decisions

