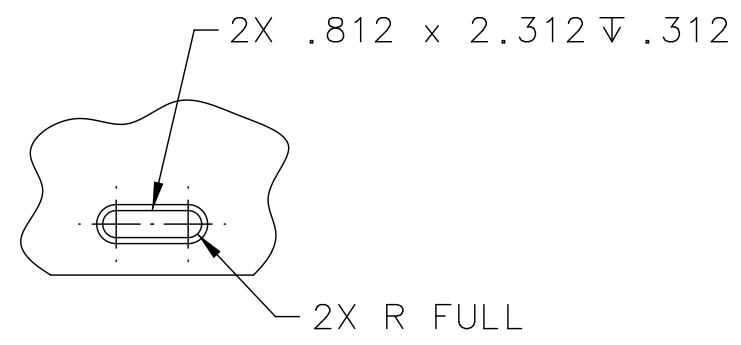
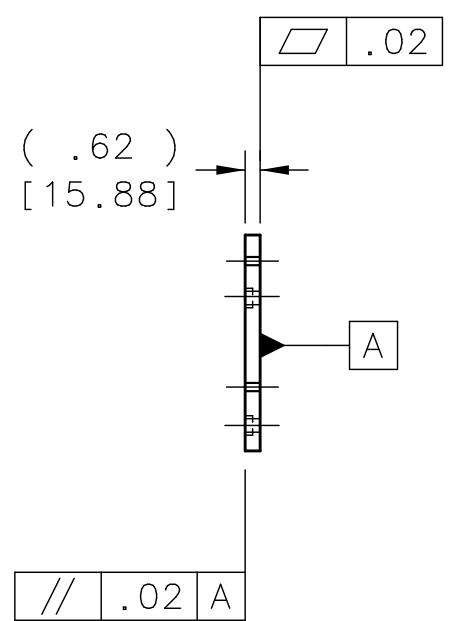
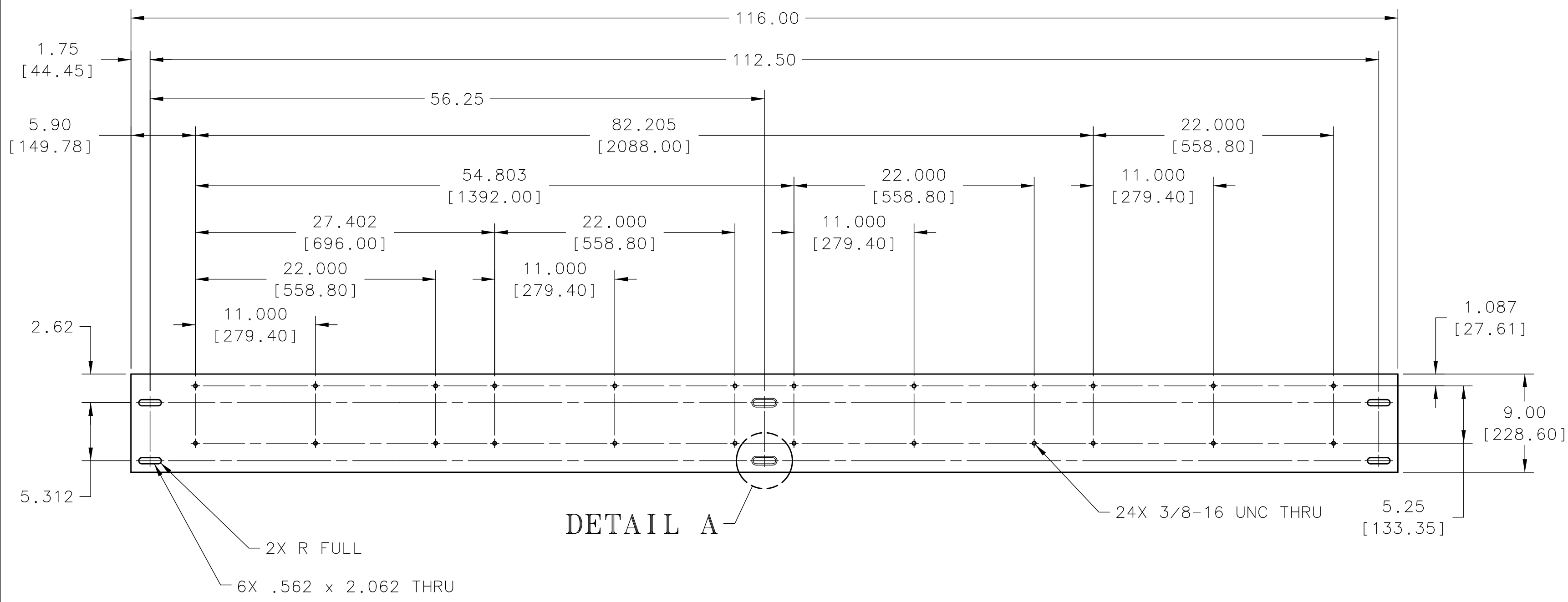
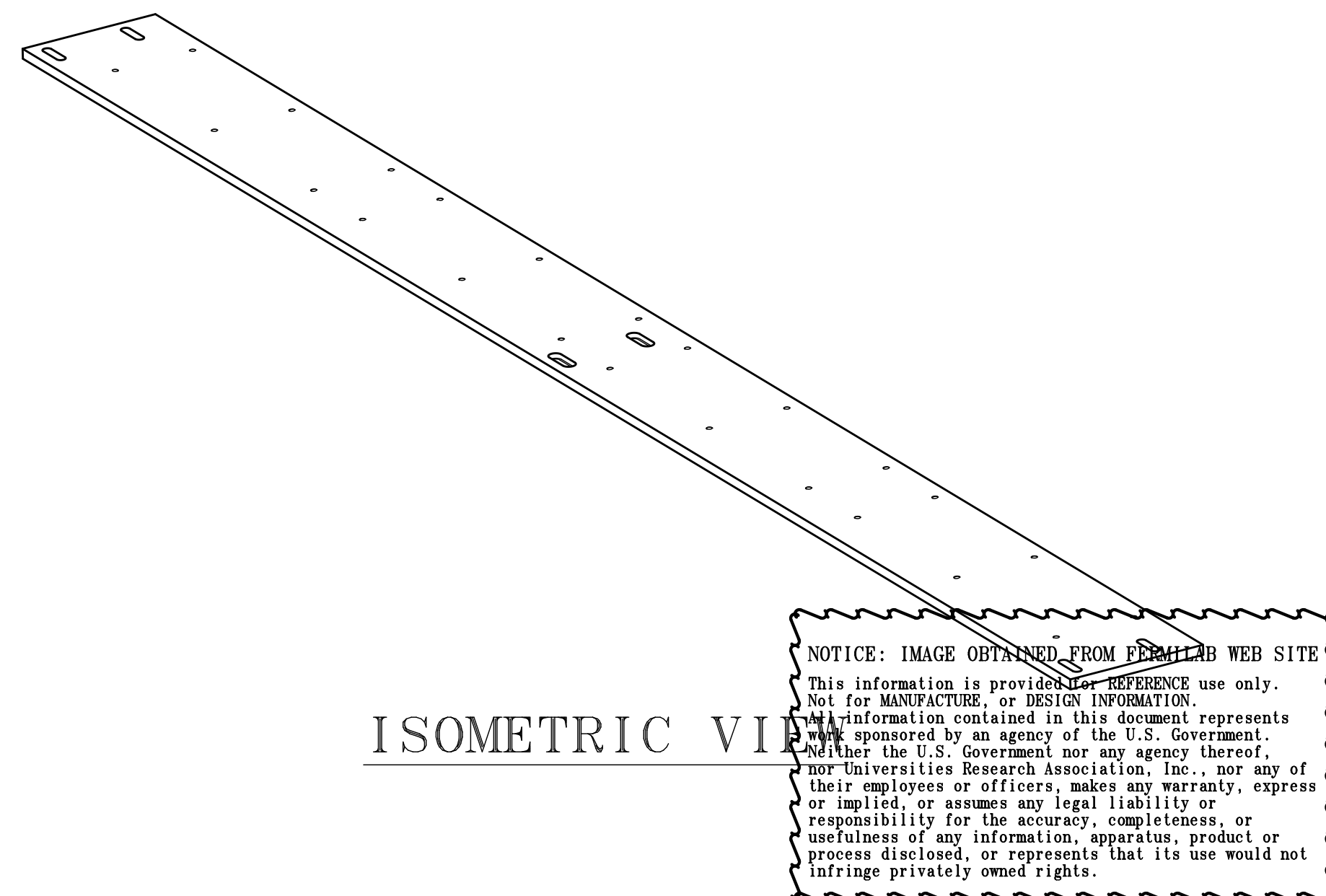


REV	DESCRIPTION	DRAWN	DATE
		APPROVED	DATE



DETAIL A
2 CENTER SLOTS
SCALE 1/4



NOTES:
1. APPROX WEIGHT: 183 LBS

NOTICE: IMAGE OBTAINED FROM FERMI LAB WEB SITE
This information is provided for REFERENCE use only.
Not for MANUFACTURE, or DESIGN INFORMATION.
All information contained in this document represents
work sponsored by an agency of the U.S. Government.
Neither the U.S. Government nor any agency thereof,
nor Universities Research Association, Inc., nor any of
their employees or officers, makes any warranty, express
or implied, or assumes any legal liability or
responsibility for the accuracy, completeness, or
usefulness of any information, apparatus, product or
process disclosed, or represents that its use would not
infringe privately owned rights.

UNLESS OTHERWISE SPECIFIED			ORIGINATOR	E. CHI	07-JUN-2006
.XX	.XXX	ANGLES	DRAWN	T. SPERRY	25-JUL-2006
\pm .02	\pm .005	\pm --	CHECKED	J. RAUCH	08-NOV-2006
1. BREAK ALL SHARP EDGES .015 MAX.			APPROVED	E. CHI	08-NOV-2006
2. DO NOT SCALE DRAWING.			USED ON		
3. DIMENSIONS BASED UPON ASME Y14.5M-1994			ME-444138		
4. MAX. ALL MACH. SURFACES 250 ∇			MATERIAL		
5. DRAWING UNITS: U.S. INCH			STEEL PLATE, 5/8 THK, 1018 OR EQUIV, COLD DRAWN		
FERMI NATIONAL ACCELERATOR LABORATORY UNITED STATES DEPARTMENT OF ENERGY					
SCIBOONE - MECHANICAL DETECTORS PLATE SUPPORT BASE VERT EC					
SCALE 1/8 & AS NOTED	DRAWING NUMBER 3954.330-MC-435948			SHEET 1 OF 1	REV
CREATED WITH : Ideas12NXSeries		GROUP: PPD/MECHANICAL DEPARTMENT			