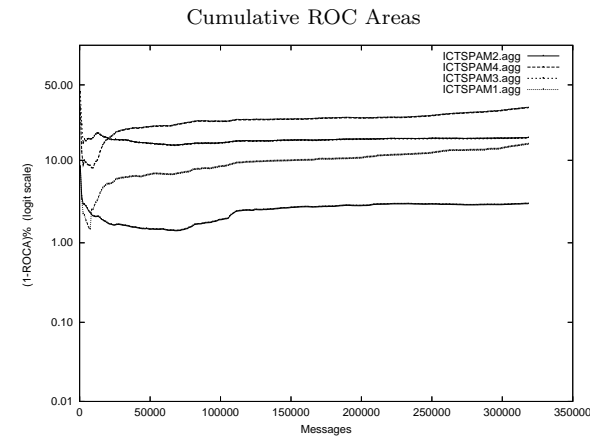
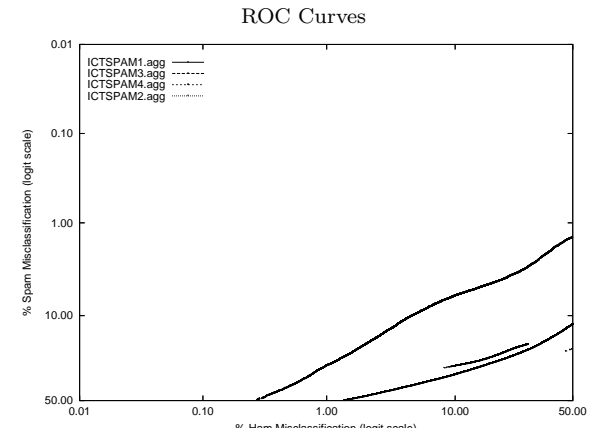


# ICT - Chinese Academy of Sciences (ICT) on Aggregate of full, mrx, sb, tm Corpus

Gold Std. Filter Classification	ICTSPAM1.agg		ICTSPAM2.agg		ICTSPAM3.agg		ICTSPAM4.agg	
	ham spam	ham spam	ham spam	ham spam	ham spam	ham spam	ham spam	ham spam
Ham Misc%	23.16 (22.98-23.34)		4.31 (4.22-4.40)		13.11 (12.96-13.25)		62.14 (61.93-62.35)	
Spam Misc%	15.20 (14.99-15.41)		9.80 (9.62-9.97)		27.33 (27.07-27.59)		16.02 (15.81-16.24)	
Logit av Misc%	18.86 (18.71-19.01)		6.54 (6.45-6.63)		19.24 (19.09-19.38)		35.88 (35.67-36.09)	
(1-ROCA)%	nan (nan - nan)		3.048 (2.988 - 3.110)		nan (nan - nan)		nan (nan - nan)	
Ham Misc%	Spam Misc%							
0.01	90.68 (83.61 - 94.88)		89.69 (77.12 - 95.73)		99.93 (99.89 - 99.95)		99.98 (99.96 - 99.99)	
0.02	81.01 (78.16 - 83.56)		79.45 (76.89 - 81.78)		99.86 (99.80 - 99.90)		99.97 (99.95 - 99.98)	
0.05	74.13 (72.38 - 75.81)		69.56 (67.35 - 71.68)		99.61 (99.51 - 99.69)		99.93 (99.91 - 99.95)	
0.10	67.60 (66.61 - 68.57)		60.29 (58.58 - 61.98)		99.17 (99.03 - 99.29)		99.84 (99.80 - 99.87)	
0.20	62.90 (62.12 - 63.67)		52.50 (51.81 - 53.18)		98.26 (98.06 - 98.45)		99.69 (99.64 - 99.73)	
0.50	56.87 (56.37 - 57.38)		41.00 (39.99 - 42.02)		95.77 (95.50 - 96.03)		99.18 (99.11 - 99.25)	
1.00	52.20 (51.76 - 52.63)		28.87 (28.24 - 29.50)		91.61 (91.22 - 91.99)		98.34 (98.23 - 98.45)	
2.00	47.41 (47.02 - 47.79)		19.34 (18.95 - 19.73)		83.31 (82.79 - 83.82)		96.69 (96.55 - 96.82)	
5.00	40.03 (39.69 - 40.37)		9.72 (9.51 - 9.94)		58.04 (57.15 - 58.93)		91.64 (91.42 - 91.84)	
10.00	33.79 (33.44 - 34.14)		6.26 (6.12 - 6.40)		29.04 (28.75 - 29.33)		83.15 (82.87 - 83.43)	
20.00	26.44 (26.12 - 26.77)		4.36 (4.24 - 4.48)		23.40 (23.14 - 23.66)		66.65 (66.24 - 67.06)	
50.00	12.28 (12.08 - 12.49)		1.46 (1.39 - 1.53)		14.17 (13.97 - 14.38)		20.87 (20.60 - 21.14)	
Spam Misc%	Ham Misc%							
0.01	100.00 (nan - nan)		97.90 (96.59 - 98.72)		99.96 (99.93 - 99.98)		99.96 (99.93 - 99.98)	
0.02	100.00 (nan - nan)		96.38 (94.08 - 97.80)		99.94 (99.90 - 99.96)		99.93 (99.89 - 99.96)	
0.05	100.00 (nan - nan)		91.43 (90.51 - 92.27)		99.82 (99.77 - 99.86)		99.82 (99.76 - 99.87)	
0.10	99.78 (99.40 - 99.92)		88.73 (88.18 - 89.26)		99.61 (99.54 - 99.68)		99.67 (99.60 - 99.73)	
0.20	98.35 (97.65 - 98.85)		84.41 (83.22 - 85.52)		99.30 (99.20 - 99.38)		99.37 (99.26 - 99.46)	
0.50	89.37 (88.30 - 90.36)		73.86 (72.90 - 74.78)		98.31 (98.17 - 98.44)		98.36 (98.18 - 98.51)	
1.00	84.16 (83.83 - 84.50)		62.23 (60.83 - 63.60)		96.50 (96.28 - 96.71)		96.80 (96.59 - 97.00)	
2.00	80.21 (79.96 - 80.45)		40.45 (39.57 - 41.34)		93.11 (92.81 - 93.39)		93.80 (93.51 - 94.08)	
5.00	70.07 (69.70 - 70.45)		15.60 (14.87 - 16.35)		82.45 (81.94 - 82.94)		84.30 (83.91 - 84.68)	
10.00	56.00 (55.50 - 56.50)		4.77 (4.61 - 4.93)		64.53 (63.86 - 65.20)		68.69 (68.46 - 68.92)	
20.00	32.95 (32.39 - 33.52)		1.90 (1.84 - 1.96)		29.65 (28.81 - 30.50)		52.69 (51.85 - 53.53)	
50.00	1.38 (1.30 - 1.47)		0.27 (0.25 - 0.29)		5.96 (5.85 - 6.07)		29.82 (29.56 - 30.08)	



## Learning Curves

