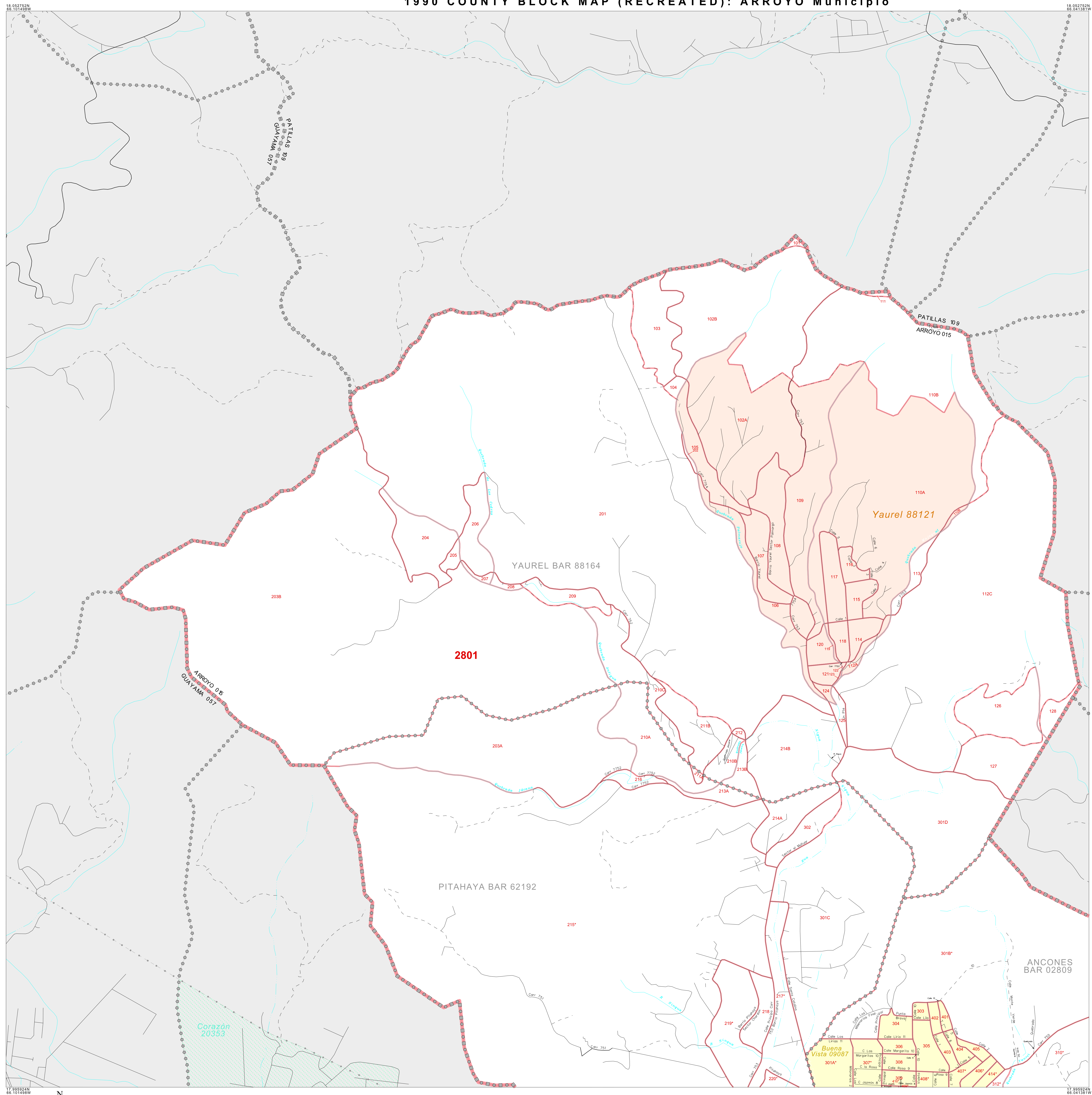


1990 COUNTY BLOCK MAP (RECREATED): ARROYO Municipio



LEGEND

SYMBOL	NAME STYLE
*****	INTERNATIONAL
-----	PUERTO RICO
■ ■ ■ ■ ■	BARRIO / BARRIO-PUEBLO
○ ○ ○ ○ ○	Subbarrio
■ ■ ■ ■ ■	Place within Subject Entity
■ ■ ■ ■ ■	Comunidad / Zona Urbana
■ ■ ■ ■ ■	Place outside of Subject Entity
■ ■ ■ ■ ■	Comunidad / Zona Urbana
—	Census Tract / BNA ¹
—	BLOCK ²

FEATURES

Highway	Pipe/Power Line	Stream/Shoreline
Secondary Road	Ridge/Physical Feature	Intermittent Stream
Leap Trail/Walkway/Ferry	Property/Fence Line	River
Roadroad	Nonvisible Boundary	

ABBREVIATION REFERENCE: BNA = Block Numbering Area
 Where international and municipio boundaries coincide, the map shows the boundary symbol for only the higher-ranking of these boundaries.
¹ In 1990, the crew-of-vessel population of ships at sea was allocated to census tracts with a "09" suffix. An anchor symbol appeared on the 1990 maps locating a crew-of-vessel tract. These maps show a very small area symbolized as a census tract with the census tract number shown near the area.
² A " " following a block number indicates that the block number is repeated elsewhere in the block.

17 595524N 86 101489W

18 052752N 86 101438W

Corazón 20353

ANCONES BAR 02809

Buena Vista 09087

219° 220° 218° 217° 216° 215° 214° 213° 212° 211° 210° 209° 208° 207° 206° 205° 204° 203A 203B 201 200 199 198 197 196 195 194 193 192 191 190 189 188 187 186 185 184 183 182 181 180 179 178 177 176 175 174 173 172 171 170 169 168 167 166 165 164 163 162 161 160 159 158 157 156 155 154 153 152 151 150 149 148 147 146 145 144 143 142 141 140 139 138 137 136 135 134 133 132 131 130 129 128 127 126 125 124 123 122 121 120 119 118 117 116 115 114 113 112 111 110 109 108 107 106 105 104 103 102B 102A 101 100

Patillas 109

Arroyo 015

Yaurel 88121

Yaurel Bar 88164

Pitahaya Bar 62192

Scale: 1:8500

Entity Type: Municipio
 Name: Arroyo Municipio (015)
 ST: Puerto Rico (72)

Key to Adjacent Sheets

1	2
3	4

SHEET 1 OF 4 PARENT SHEETS
 TOTAL SHEETS: 6 (Index 1; Parent 4; Inset 1)

17 595524N 86 101489W

18 052752N 86 101438W

1990 COUNTY BLOCK MAP (RECREATED)
 (PDRDLK) 19972015001000000000

All legal boundaries and names are as of January 1, 1990 as tabulated for the Public Law 94-171 and Summary Tape File products. The boundaries also reflect the feature network and coordinates as of the Census 2000 geographic base. Since 1990 the Census Bureau updated the base from the North American Datum of 1927 (NAD27) to the datum as of 1983 (NAD83) and made numerous updates to the base features from those depicted in 1990. The boundaries shown on this map are for the Census Bureau's statistical data collection and tabulation purposes only; their depiction and designation for statistical purposes does not constitute a determination of jurisdictional authority or rights or ownership or entitlement. Source: U.S. Census Bureau's TIGER database (Census 2000) Projection: State-based Albers Equal Area U.S. DEPARTMENT OF COMMERCE Economics and Statistics Administration U.S. Census Bureau