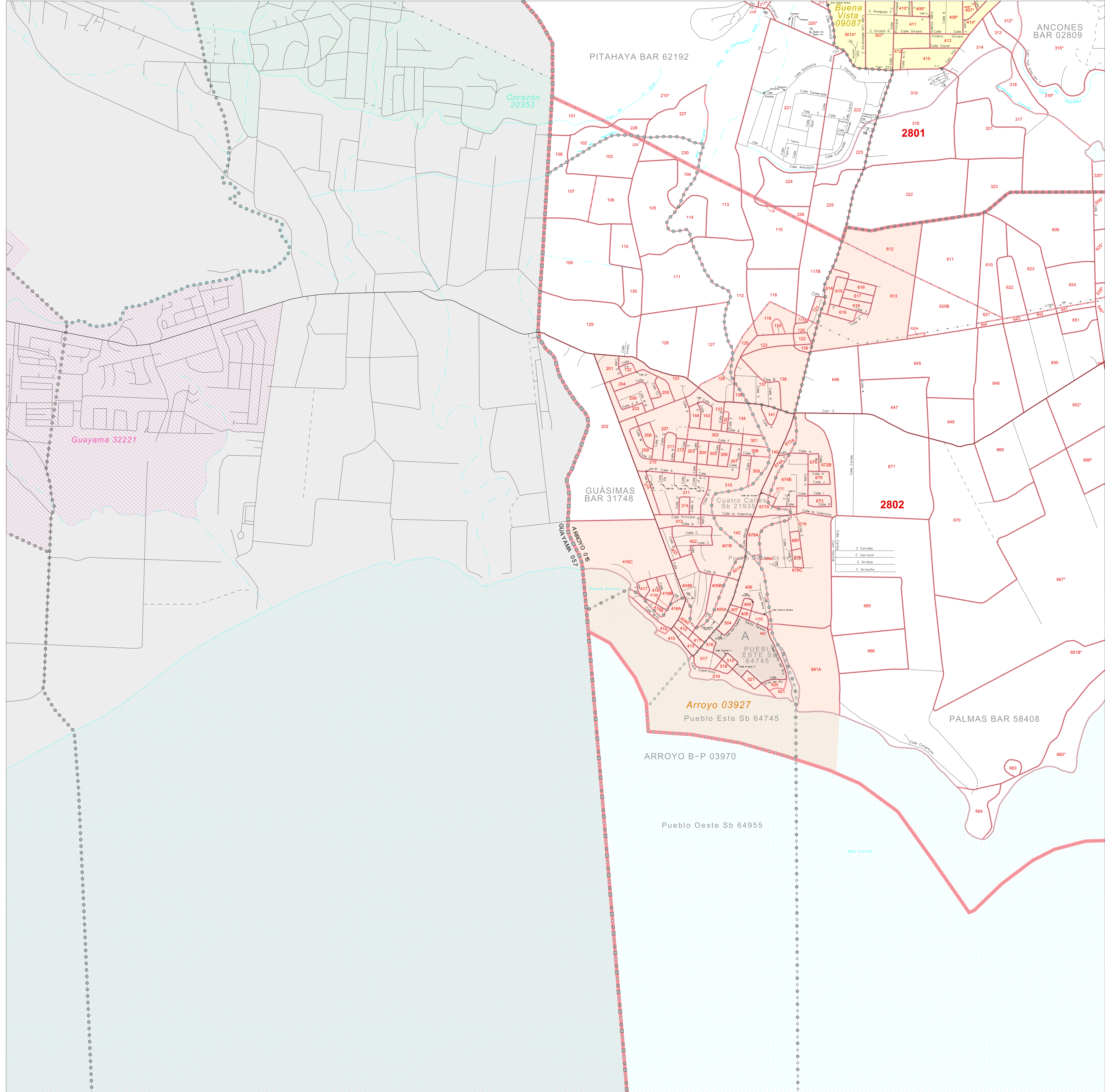


1990 COUNTY BLOCK MAP (RECREATED): ARROYO Municipio

17 985024N
86 101498W

17 985024N
86 041381W



LEGEND

SYMBOL	NAME STYLE
*****	INTERNATIONAL
-----	BARRIO / BARRIO-PUEBLO
o o o o o	Subbarrio
-----	Place within Subject Entity
-----	Comunidad / Zona Urbana
-----	Place outside of Subject Entity
-----	Comunidad / Zona Urbana
-----	Census Tract / BNA ¹
-----	BLOCK ²

FEATURES

Highway	Pipe/Power Line	Stream/Shoreline
Secondary Road	Ridge/Physical Feature	Intermittent Stream
Deep Trail/Walkway/Ferry	Property/Fence Line	River
Railroad	Nonvisible Boundary	

ABBREVIATION REFERENCE: BNA - Block Numbering Area
 Where international and municipio boundaries coincide, the map shows the boundary symbol for only the higher-ranking of these boundaries.
¹ In 1990, the crew-of-vessel population of ships at sea was allocated to census tracts with a '09' suffix. An anchor symbol appeared on the 1990 maps locating a crew-of-vessel tract. These maps show a very small area symbolized as a census tract with the census tract number shown near the area.
² A "A" following a block number indicates that the block number is repeated elsewhere in the block.

Key to Adjacent Sheets

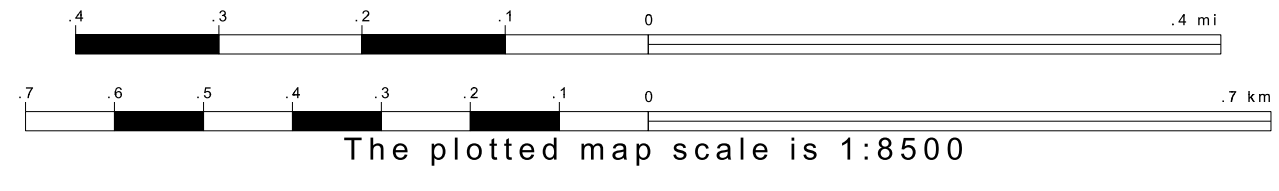
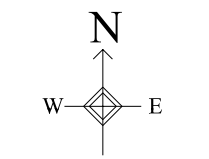
1	2
3	4

Sheet Location within Entity

SHEET 3 OF 4 PARENT SHEETS
 TOTAL SHEETS: 6 (Index 1; Parent 4; Inset 1)

17 985024N
86 101498W

17 985024N
86 041381W



All legal boundaries and names are as of January 1, 1990 as tabulated for the Public Law 94-171 and Summary Tape File products. The boundaries also reflect the feature network and coordinates as of the Census 2000 geographic base. Since 1990 the Census Bureau updated the base from the North American Datum of 1927 (NAD27) to the datum as of 1983 (NAD83) and made numerous updates to the base features from those depicted in 1990. The boundaries shown on this map are for the Census Bureau's statistical data collection and tabulation purposes only; their depiction and designation for statistical purposes does not constitute a determination of jurisdictional authority or rights or ownership or establishment. Source: U.S. Census Bureau's TIGER database (Census 2000) Projection: State-based Albers's Equal Area U.S. DEPARTMENT OF COMMERCE Economics and Statistics Administration U.S. Census Bureau

ENTITY TYPE: Municipio
 NAME: Arroyo Municipio (015)
 ST: Puerto Rico (72)

