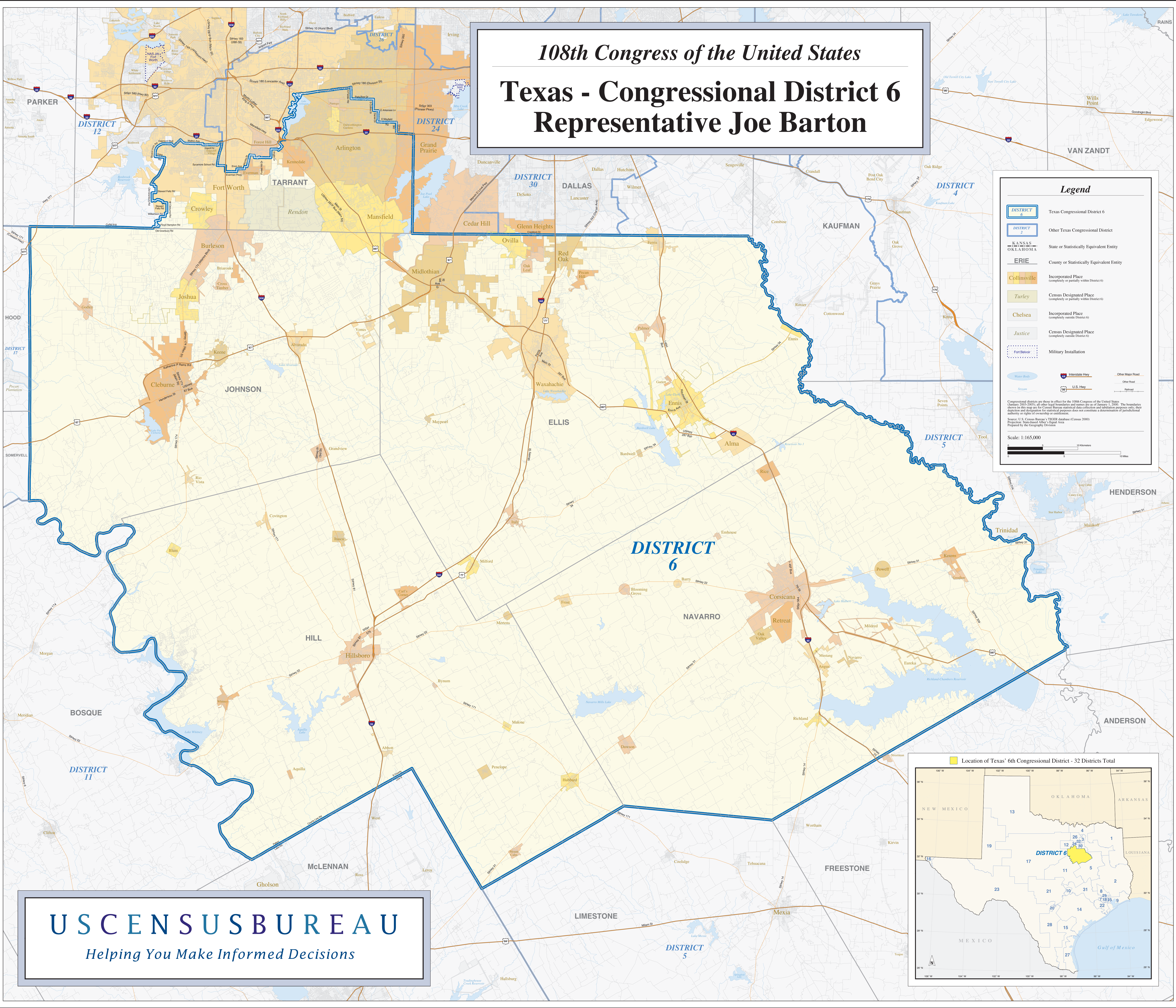


108th Congress of the United States

Texas - Congressional District 6

Representative Joe Barton



Legend

- DISTRICT 6 Texas Congressional District 6
- DISTRICT 2 Other Texas Congressional District
- KANSAS OKLAHOMA State or Statistically Equivalent Entity
- ERIE County or Statistically Equivalent Entity
- Collinsville Incorporated Place (completely or partially within District 6)
- Turley Census Designated Place (completely or partially within District 6)
- Chelsea Incorporated Place (completely outside District 6)
- Justice Census Designated Place (completely outside District 6)
- Military Installation
- Water Body Water Body
- Stream Stream
- Interstate Hwy Interstate Hwy
- U.S. Hwy U.S. Hwy
- Other Major Road Other Major Road
- Other Road Other Road

Congressional districts are those in effect for the 108th Congress of the United States (January 2003-2005); all other legal boundaries and names are as of January 1, 2000. The boundaries shown on this map are for Census Bureau statistical data collection and tabulation purposes only. Their depiction and description for statistical purposes does not constitute a determination of jurisdictional authority or rights of ownership or control.

Source: U.S. Census Bureau's TIGER Database (Census 2000) Prepared by State-based Atlas Digital Area Prepared by the Geography Division

Scale: 1:165,000

US CENSUS BUREAU
Helping You Make Informed Decisions

