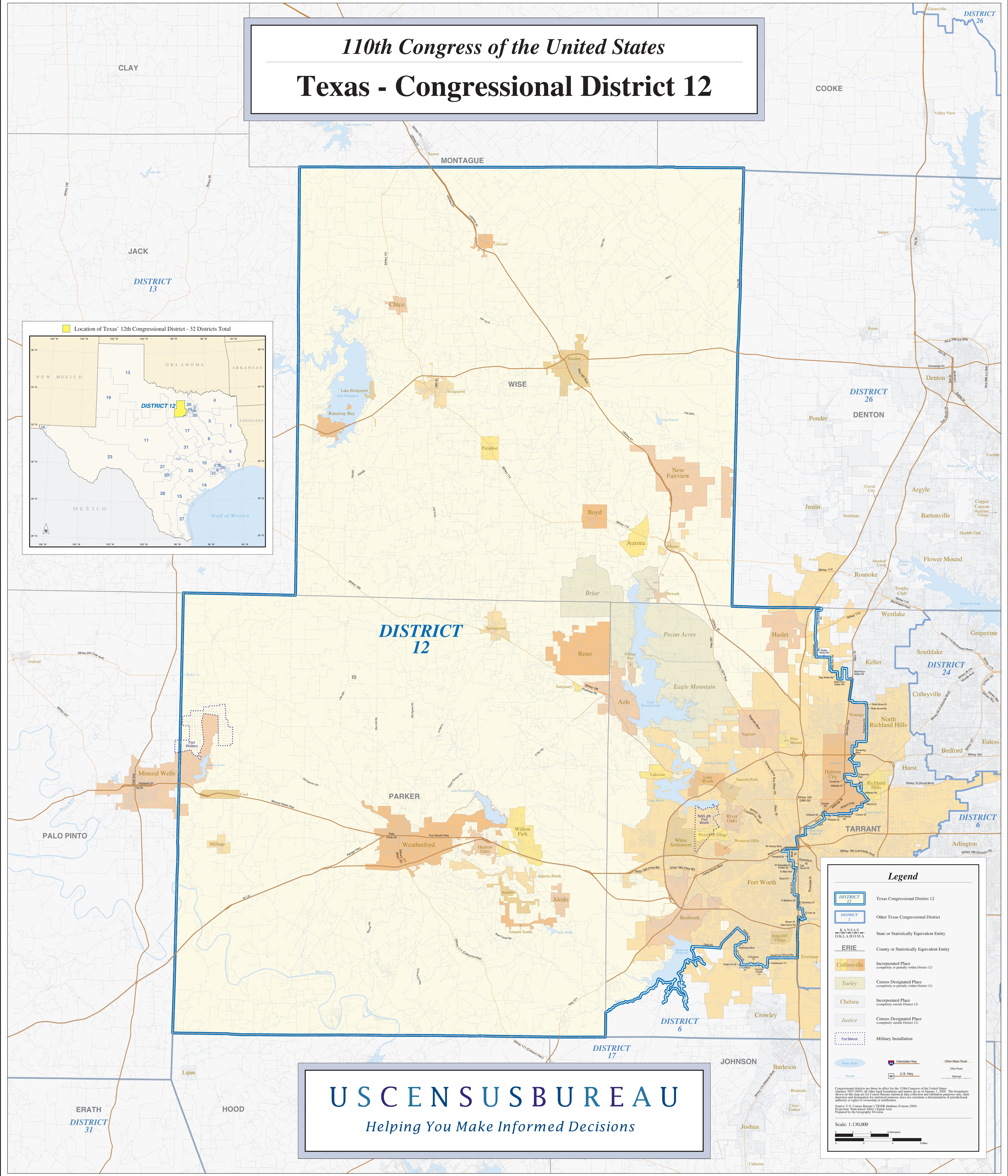
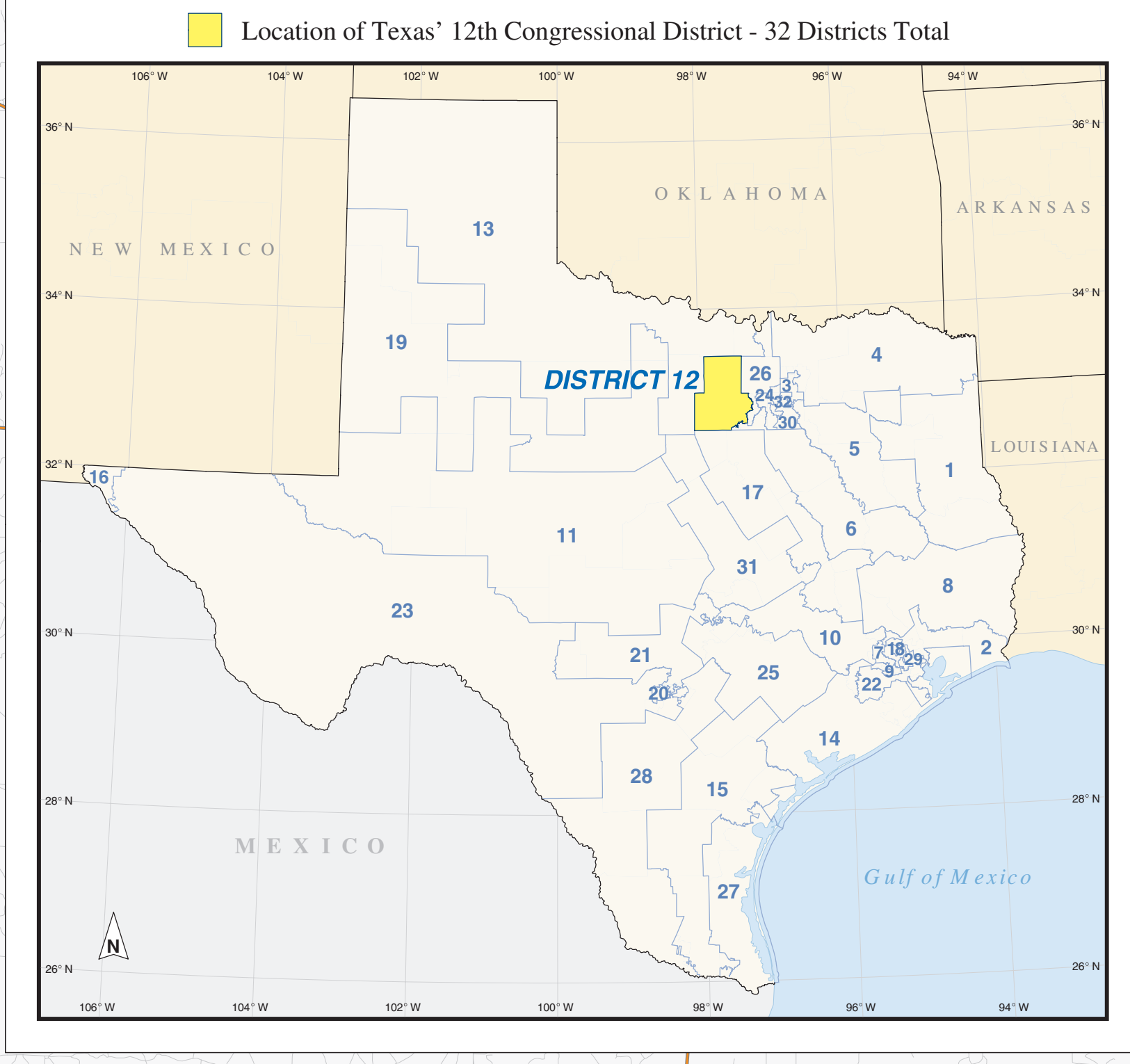


110th Congress of the United States

Texas - Congressional District 12



USCENSUSBUREAU
Helping You Make Informed Decisions

Legend

- DISTRICT 12 Texas Congressional District 12
- DISTRICT 2 Other Texas Congressional District
- KANSAS State or Statistically Equivalent Entity
- OKLAHOMA County or Statistically Equivalent Entity
- ERIE County or Statistically Equivalent Entity
- Collinsville Incorporated Place (completely or partially within District 12)
- Turley Census Designated Place (completely or partially within District 12)
- Chelsea Incorporated Place (completely outside District 12)
- Justice Census Designated Place (completely outside District 12)
- Fort Belvoir Military Installation
- Water Body Water Body
- Stream Stream
- Interstate Hwy Interstate Highway
- U.S. Hwy U.S. Highway
- Other Major Road Other Major Road
- Other Road Other Road
- Railroad Railroad

Congressional districts are those in effect for the 110th Congress of the United States (January 2007-2009); all other legal boundaries and names are as of January 1, 2000. The boundaries shown on this map are for Census Bureau statistical data collection and tabulating purposes only; their authority or rights of ownership or control are not shown.

Source: U.S. Census Bureau's TIGER database (Census 2000) Projection: Statewide Other: Equal Area Prepared by the Geography Division

Scale: 1:130,000