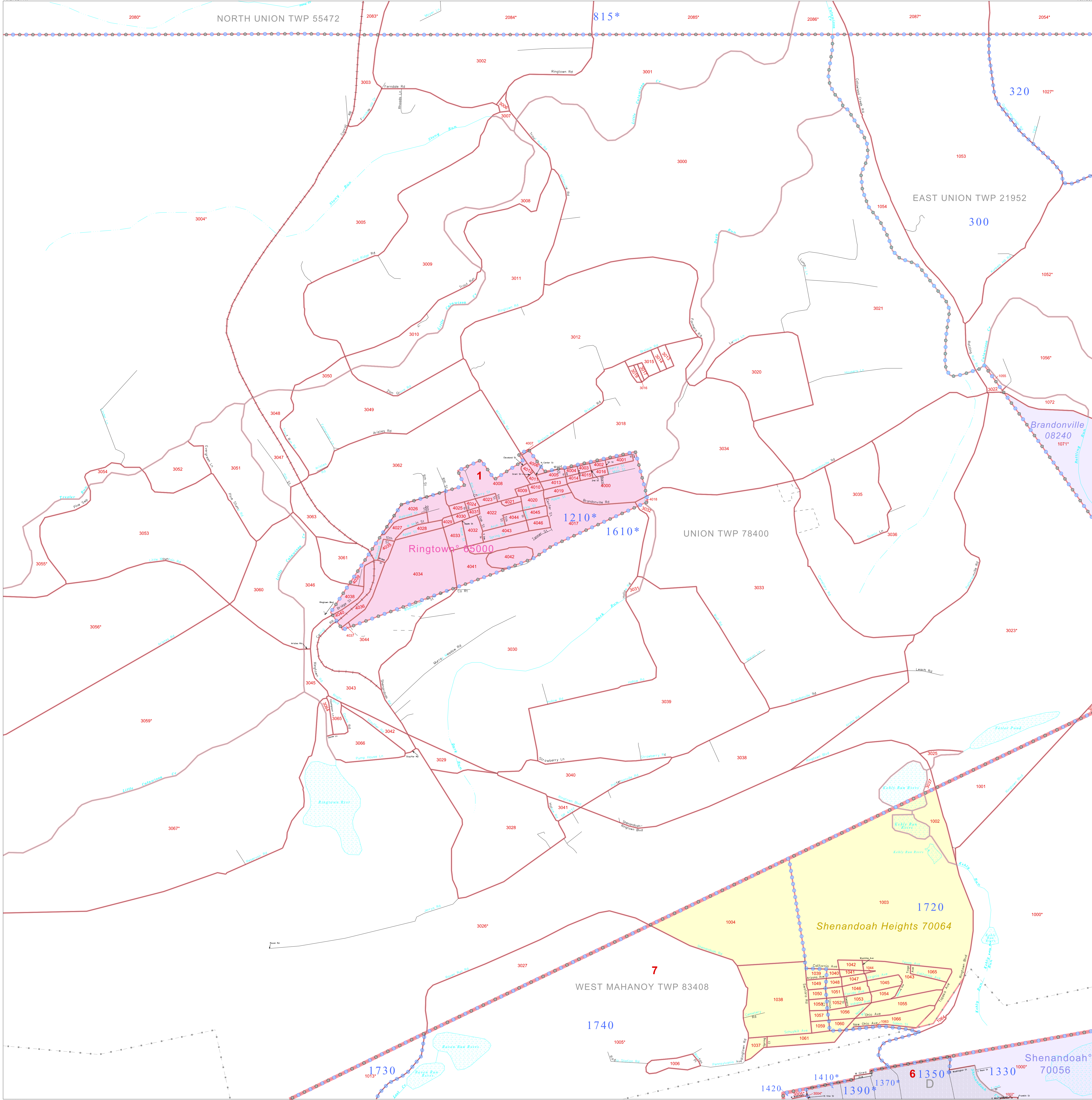


P. L. 94-171 COUNTY BLOCK MAP (CENSUS 2000)

40 898418N
76 273214W

40 888418N
76 186031W



GEOGRAPHIC AREAS LEGEND

SYMBOL	NAME STYLE
*****	INTERNATIONAL
///////	STATE
■■■■■	COUNTY
■■■■■	MINOR CIVIL DIV ¹
■■■■■	Incorporated Place ²
■■■■■	Census Designated Place ²
.....	Corporate Offset Boundary
.....	Voting District ³
■■■■■	Census Tract
■■■■■	BLOCK ³
■■■■■	Military
Inset	Inset
Out Area	Out Area

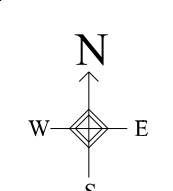
¹ A "*" following a place name indicates that the place is coterminous with a MCD. A "-" indicates that the place is also a false MCD. In both cases, the MCD name is shown only when it differs from the place name.

² A "*" following a VTD code indicates an actual voting district. Its absence indicates that the VTD is a pseudo voting district or no information is available as to its status.

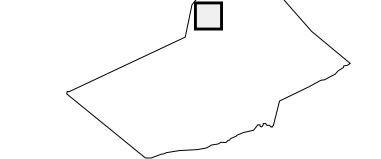
³ A "*" following a block number indicates that the block number is repeated elsewhere in the block.

40 822086N
76 273214W

40 822086N
76 186031W



Sheet Location within County



Key to Adjacent Sheets

1	2	3
6	7	8
13	14	15

ST: Pennsylvania (42)
COU: Schuylkill (107)
SHEET 7 OF 54 PARENT SHEETS



All legal boundaries and names are as of January 1, 2000. The boundaries shown on this map are for Census Bureau statistical data collection and tabulation purposes only; their depiction and designation for statistical purposes does not constitute a determination of jurisdictional authority or rights of ownership or entitlement. U.S. DEPARTMENT OF COMMERCE Economics and Statistics Administration U.S. Census Bureau