

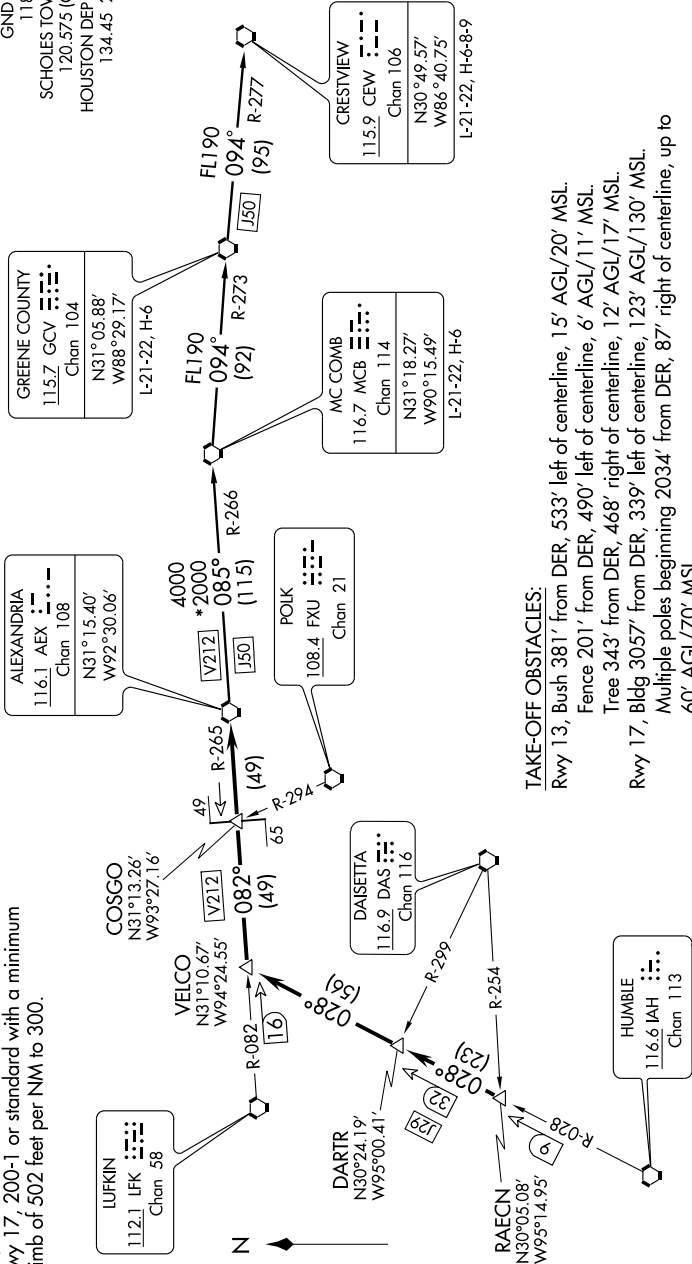
ALEXANDRIA FOUR DEPARTURE

SC-5, 12 MAR 2009 to 09 APR 2009

TAKE OFF MINIMUMS:

Rwys 13, 31, 35 standard.
Rwy 17, 200-1 or standard with a minimum
climb of 502 feet per NM to 300.

ASOS 119.275
CLNC DEL
135.35 (When lower closed)
GND CON
118.625
SCHOLES TOWER*
120.575 (CTAF)
HOUSTON DEP CON
134.45 284.0



TAKE-OFF OBSTACLES:

- Rwy 13, Bush 381' from DER, 533' left of centerline, 15' AGL/20' MSL.
Fence 201' from DER, 490' left of centerline, 6' AGL/11' MSL.
Tree 343' from DER, 468' right of centerline, 12' AGL/17' MSL.
- Rwy 17, Bldg 3057' from DER, 339' left of centerline, 123' AGL/130' MSL.
Multiple poles beginning 2034' from DER, 87' right of centerline, up to 60' AGL/70' MSL.
- Multiple transmission towers beginning 636' from DER, 551' right of centerline, up to 55' AGL/60' MSL.
- Tree 460' from DER, 316' right of centerline, 22' AGL/29' MSL.
- Rwy 31, Multiple cranes beginning 4341' from DER, 1017' left of centerline, up to 131' AGL/131' MSL.
- Rwy 35, Tree 730' from DER, 501' right of centerline, 27' AGL/32' MSL.

NOTE: Radar Required.
NOTE: Chart not to scale.

(NARRATIVE ON FOLLOWING PAGE)

ALEXANDRIA FOUR DEPARTURE

SC-5, 12 MAR 2009 to 09 APR 2009